

This catalog covers:
FC420V-□S50

GRID NO. This grid covers:
A-01 TITLE

PARTS CATALOG

4-STROKE ENGINE

FC420V

PRODUCT CODE	NOTE
FC420V-FS50	
FC420V-GS50	
FC420V-HS50	

PARTS CATALOG INTRODUCTION

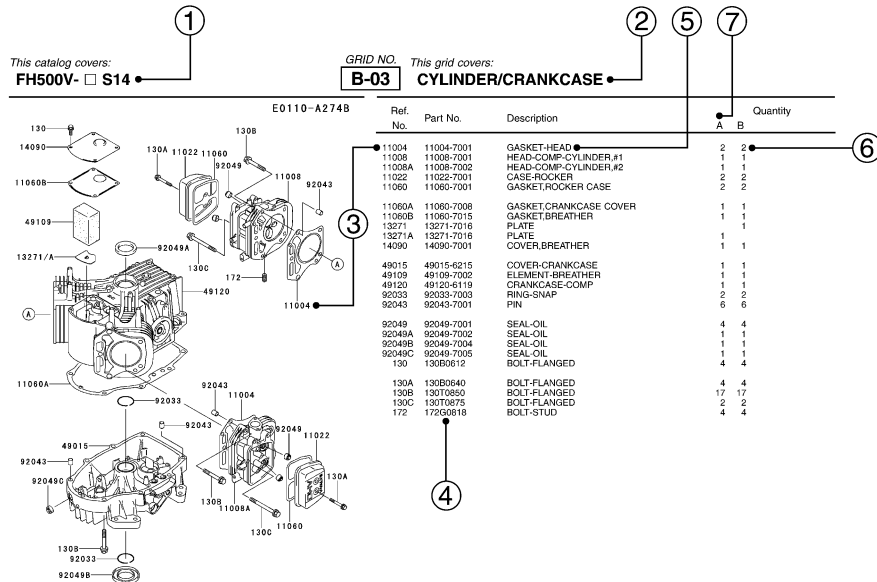
This parts catalog lists parts and sub-assemblies provided as service parts.

When it becomes necessary to replace parts, always use KAWASAKI GENUINE PARTS which have passed strict inspection which guarantees quality and performance.

1. HOW TO ORDER PARTS

- When ordering the parts, be sure to use the parts catalog corresponding to the product code. Check the product revision codes on the product and the catalog.
 Product Code (example) : FA130D-AA00
 Product Revision Code
- Specify the part code (all digits) exactly as listed in this catalog on your parts order.
- The parts not shown in the illustrations of this catalog are not sold separately; only the complete units or next higher assemblies illustrated are supplied as the service parts.

2. EXPLANATION OF PARTS CATALOG FORMAT



Ref. No. Part No. Description A B Quantity

Ref. No.	Part No.	Description	A	B	Quantity
11004	11004-7001	GASKET-HEAD	2	2	2
11008	11008-7001	HEAD-COMP-CYLINDER#1	1	1	1
11008A	11008-7002	HEAD-COMP-CYLINDER#2	1	1	1
11022	11022-7001	CASE-ROCKER	2	2	2
11060	11060-7001	GASKET,ROCKER CASE	2	2	2
11060A	11060-7008	GASKET,CRANKCASE COVER	1	1	1
11060B	11060-7015	GASKET,BREATHER	1	1	1
13271	13271-7016	PLATE	1	1	1
13271A	13271-7016	PLATE	1	1	1
14690	14690-7001	COVER,BREATHER	1	1	1
49015	49015-6215	COVER,CRANKCASE	1	1	1
49109	49109-7002	ELEMENT-BREATHER	1	1	1
49120	49120-6119	CRANKCASE-COMP	1	1	1
92033	92033-7003	RING-SNAP	2	2	2
92043	92043-7001	PIN	2	2	6
92049	92049-7001	SEAL-OIL	4	4	4
92049A	92049-7002	SEAL-OIL	1	1	1
92049B	92049-7004	SEAL-OIL	1	1	1
92049C	92049-7005	SEAL-OIL	1	1	1
130	130B0612	BOLT-FLANGED	4	4	4
130A	130B0640	BOLT-FLANGED	4	4	4
130B	130T0650	BOLT-FLANGED	17	17	17
130C	130T0875	BOLT-FLANGED	2	2	2
172	172G0818	BOLT-STUD	4	4	4

1) Product Code

This code describes the product code covered by this catalog. The product revision code, which is a part of the product code, is omitted.

2) Part Group Title

This title is the representative name for the group of parts illustrated on the page.

3) Reference Number

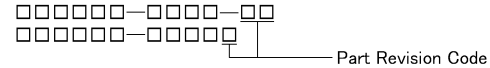
The reference numbers are shown on the illustration and the list as the link between them.

4) Part Number

This is the key of your parts ordering.

Three kinds of part number are used in this catalog.

a. Structure 1

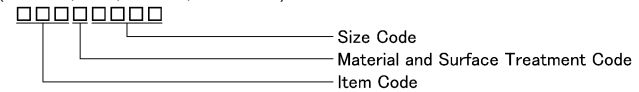


b. Structure 2



c. Standard Hardware Number

(for bolts, nuts, washer, or the like)



5) Description and Additional Information

The part name, the location, the size, and the serial number as additional information, etc. are described here. Use them to find out and check the part required.

When a part number is changed without change of the product revision code and the changed parts are not interchangeable, the serial number of the product is noted as follows;

- (FA130 - 100001) : Affected units are from beginning of the product of the product code up to and including this serial number.
- (FA130 - 100002 -) : Affected units are from this serial number and above.
- (FA130 - 100002 - FA130 - 110001) : Affected units are in this serial number range.

6) Quantity

The figure shows quantity of the part required at the indicated position on the illustration and for the specified product revision code.

The asterisk (*) on this column means the part can be used as the substitute on the product and is supplied until the stock is exhausted.

Note:Some small parts will be supplied by units.

Example: If six (6) bolts are ordered and the minimum quantity per unit is five (5), two (2), units of the bolt will be delivered.

7) Product Revision Code

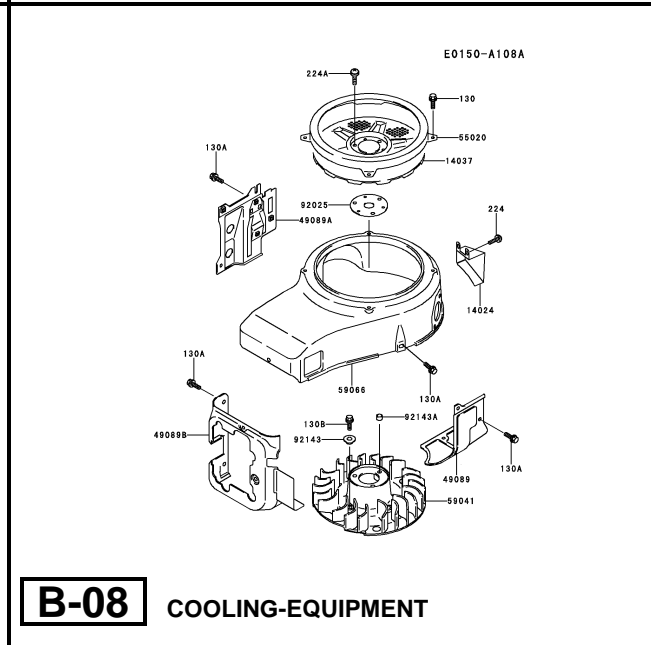
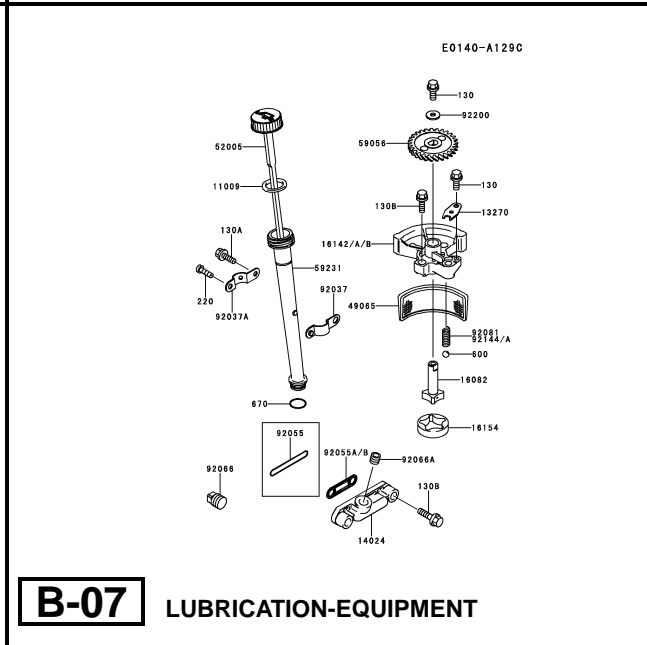
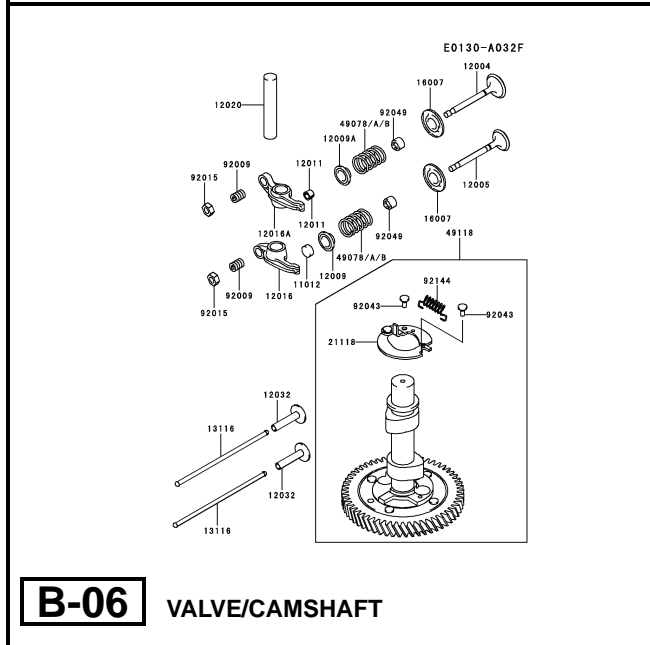
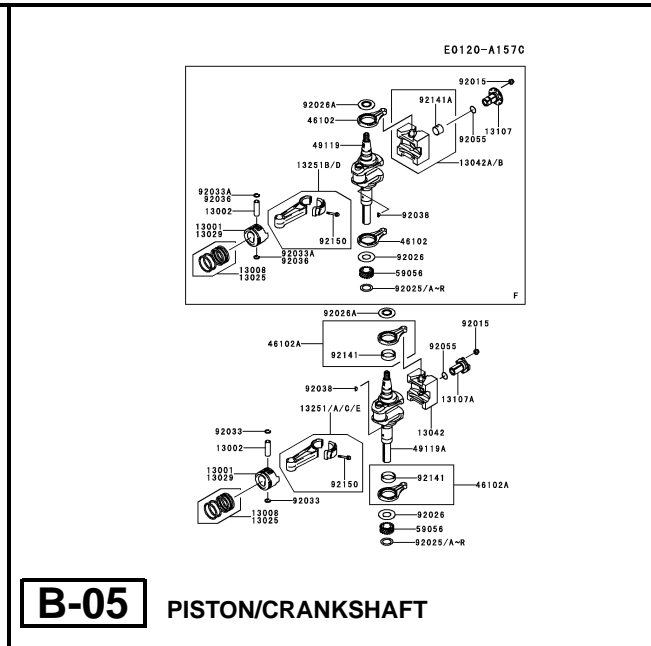
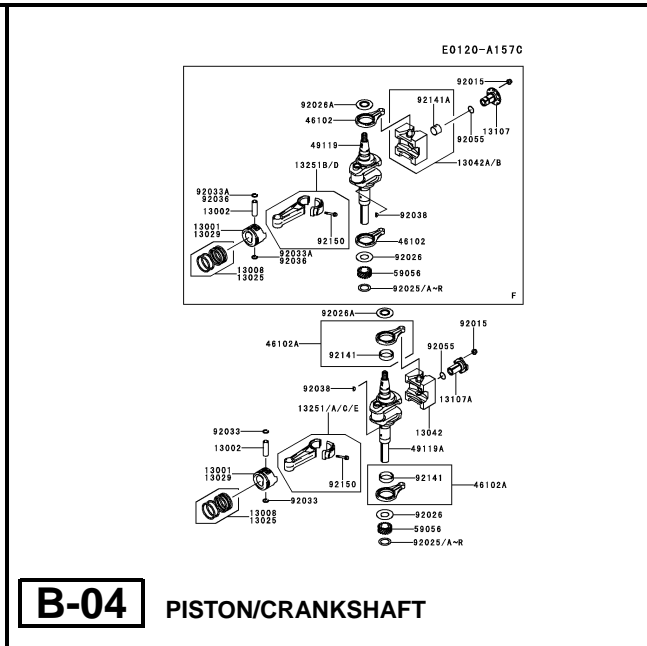
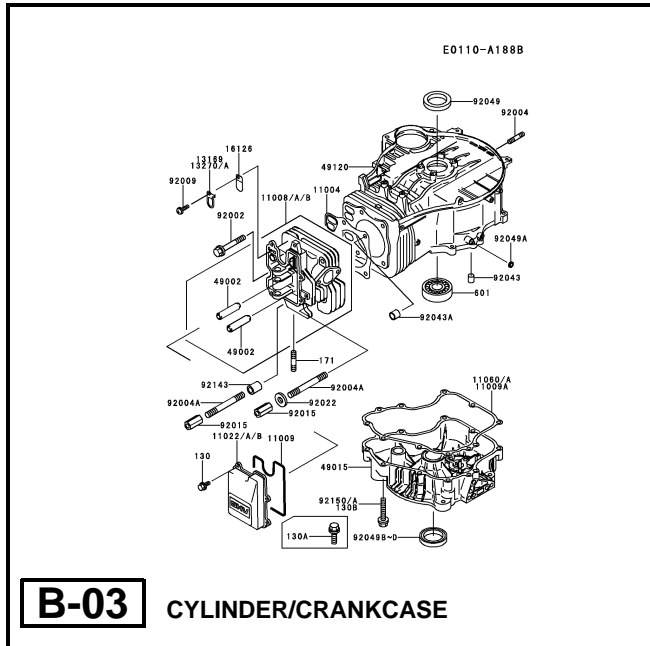
This Code indicates an important change which affects the service parts interchangeability.

3. ABBREVIATIONS

#.....Number	FR.....Front	RH.....Right Hand
&.....And	G.....Gram	RPM.....Revolutions Per Minute
(+).....Plus	HEX.....Hexagonal	RR.....Rear
(-).....Minus	ID=.....Inside Diameter	STD.....Standard
2ND.....Second	IN.....Inch	T.....Teeth
3RD.....Third	L=.....Length	T=.....Thickness
4TH.....Fourth	LH.....Left Hand	U/S.....Under Size
A.....Ampere	LWR.....Lower	UPP.....Upper
AR.....As Required	MM.....Millimeter	V.....Volt
ASSY.....Assembly	O/S.....Over Size	W.....Watt
CNT.....Center	OD=.....Outside Diameter	
COMP.....Complete	REF.....Reference	

This catalog covers:
FC420V- □ S50

GRID NO. This grid covers:
B-01 PICTORIAL INDEX



This catalog covers:

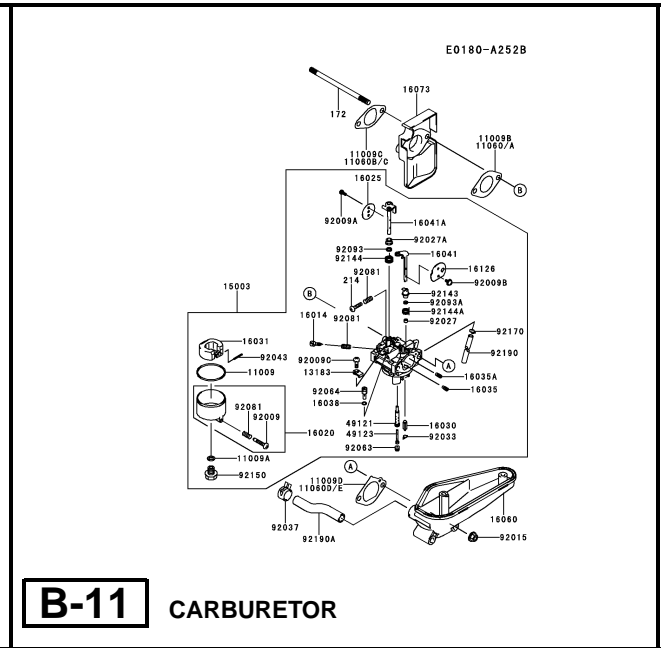
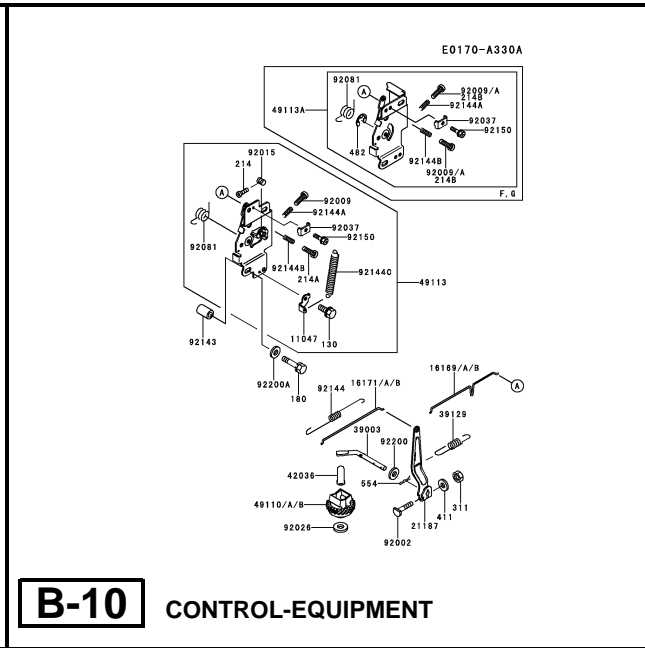
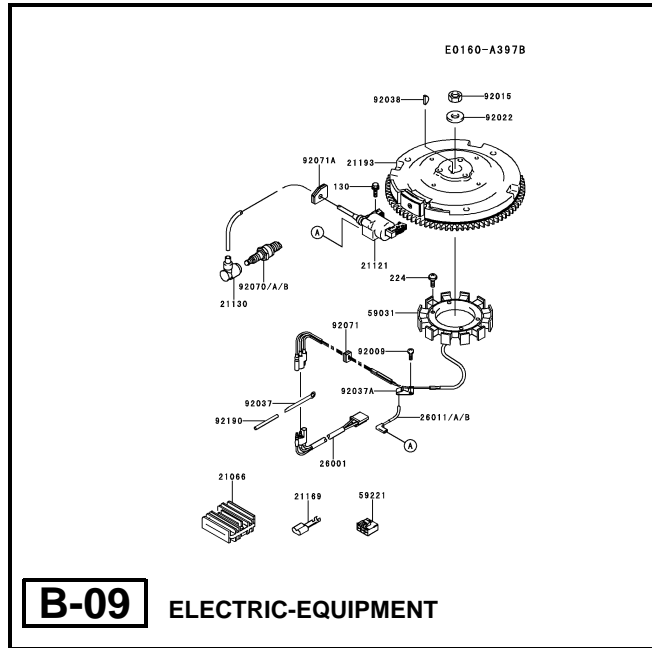
FC420V- □ S50

GRID NO.

B-02

This grid covers:

PICTORIAL INDEX



This catalog covers:

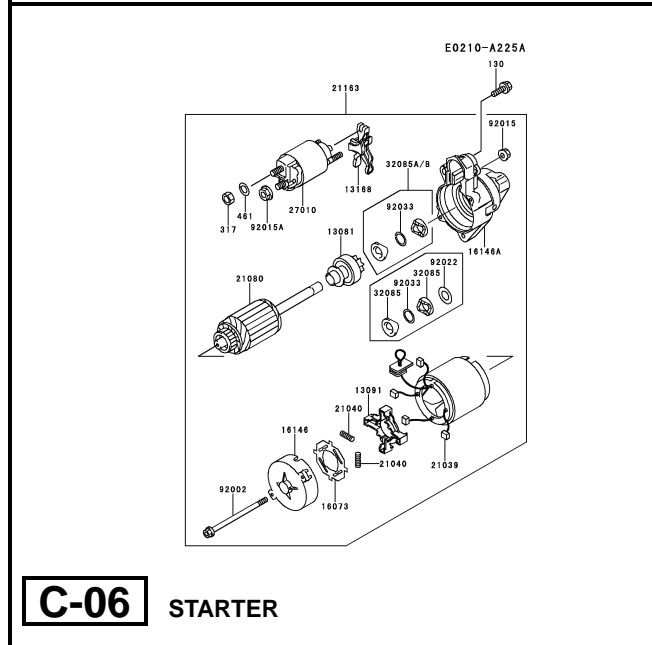
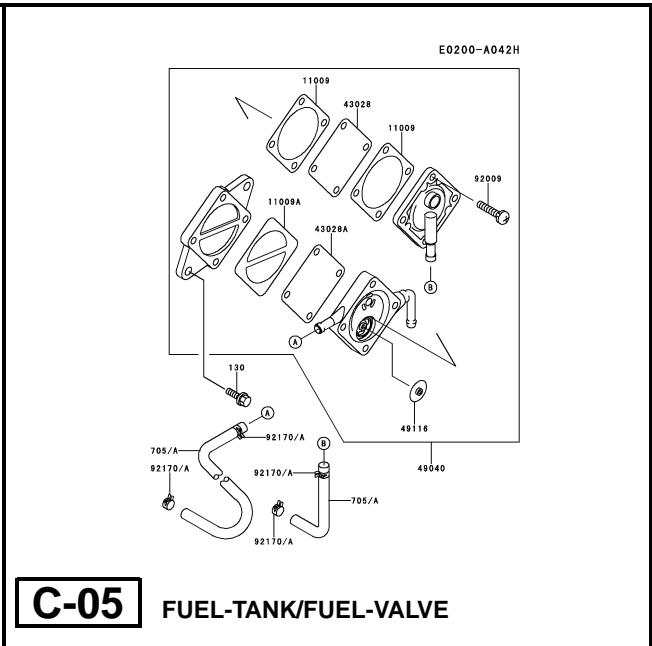
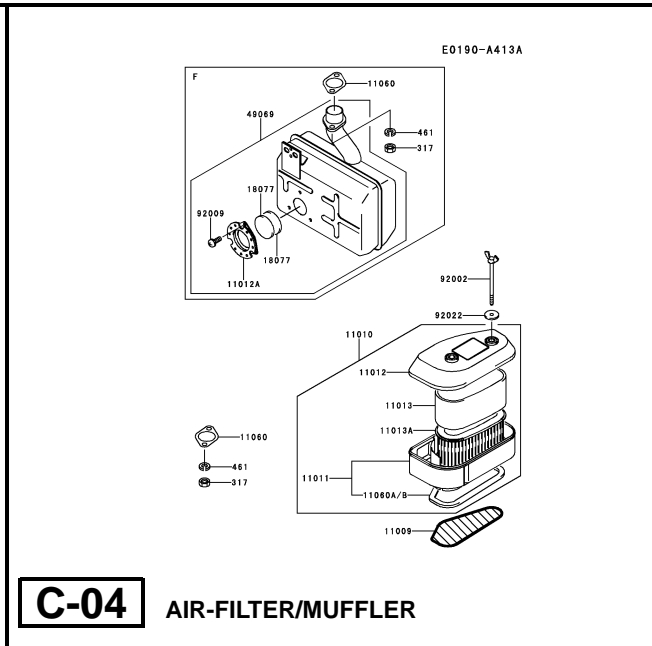
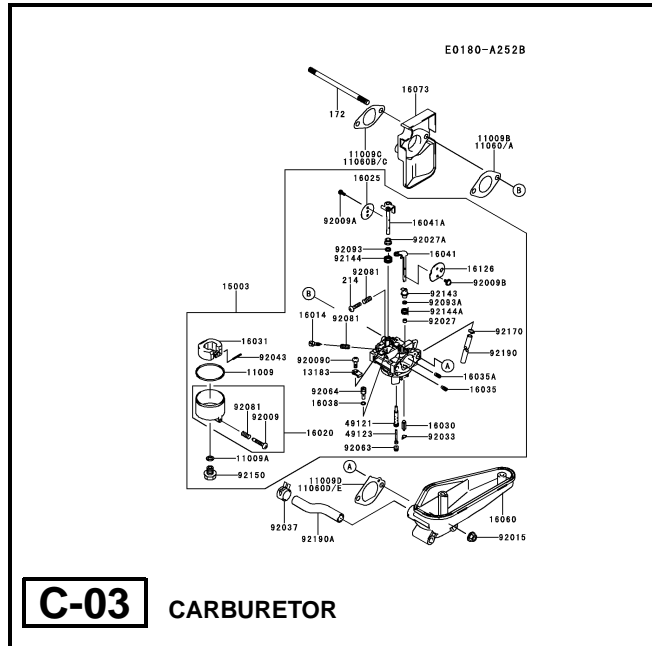
FC420V- □ S50

GRID NO.

C-01

This grid covers:

PICTORIAL INDEX



This catalog covers:



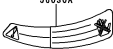

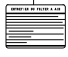


FC420V- **S50**

GRID NO.

D-01

This grid covers:

PICTORIAL INDEX

<p>F0290-A427B</p>  <p>56030</p>  <p>56038</p>  <p>56030A</p>  <p>56031A-C</p>  <p>56031</p>  <p>56070/A</p>  <p>56070B/C</p> <p>D-03 LABEL</p>		

This catalog covers:

FC420V- □ S50

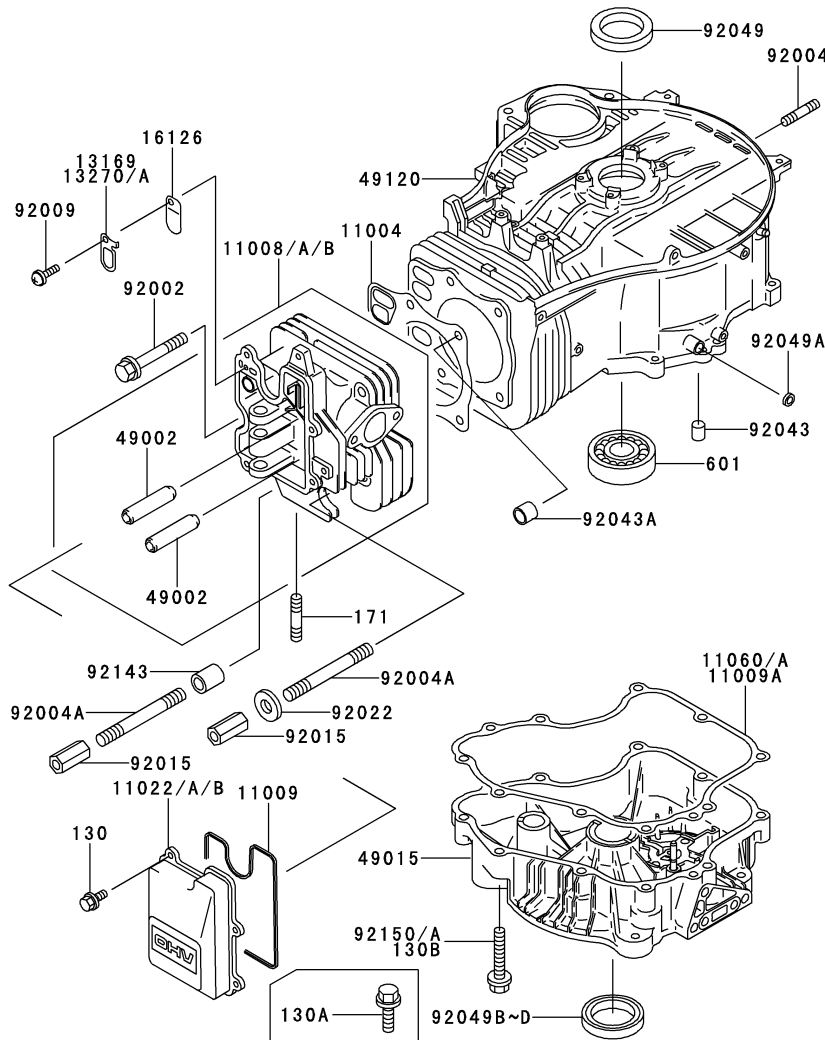
GRID NO.

B-03

This grid covers:

CYLINDER/CRANKCASE

E0110-A188B



Ref. No.	Part No.	Description	Quantity		
			F	G	H
11004	11004-2096	GASKET-HEAD	1	1	1
11008	11008-6016	HEAD-COMP-CYLINDER	*		
11008A	11008-6026	HEAD-COMP-CYLINDER		1	1
11008B	11008-6026	HEAD-COMP-CYLINDER	1		
11009	11009-2433	GASKET,ROCKER CASE	1	1	1
11009A	11009-2947	GASKET,CRANKCASE COVER	1		
11022	11022-2055	CASE-ROCKER	*		
		(FC420-B46537)			
11022A	11022-2070	CASE-ROCKER		1	1
11022B	11022-2070	CASE-ROCKER	1		
		(FC420-B46538 -)			
11060	11060-2293	GASKET,CRANKCASE COVER		1	1
11060A	11060-2293	GASKET,CRANKCASE COVER	1		
13169	13169-2436	PLATE	*		
		(FC420-B40164)			
13270	13270-2055	PLATE		1	1
13270A	13270-2055	PLATE	1		
		(FC420-B40165 -)			
16126	16126-2113	VALVE	1	1	1
49002	49002-2107	GUIDE-VALVE	2	2	2
49015	49015-6174	COVER-CRANKCASE	1	1	1
49120	49120-6106	CRANKCASE-COMP	1	1	1
92002	92002-2273	BOLT	2	2	2
92004	92004-2083	STUD,6X14	4	4	4
92004A	92004-2094	STUD	3	3	3
92009	92009-2308	SCREW	1	1	1
92015	92015-2166	NUT	3	3	3
92022	92022-2206	WASHER,10X20X2	2	2	2
92043	92043-1263	PIN	2	2	2
92043A	92043-1266	PIN	2	2	2
92049	92049-2096	SEAL-OIL	1	1	1
92049A	92049-2097	SEAL-OIL	1	1	1
92049B	92049-2104	SEAL-OIL	*		
		(FC420-B82707)			
92049C	92049-2227	SEAL-OIL		1	1
92049D	92049-2227	SEAL-OIL	1		
		(FC420-B82708 -)			
92143	92143-2005	COLLAR	1	1	1
92150	92150-2252	BOLT,8X45		9	9
92150A	92150-2252	BOLT,8X45	9		
130	130B0614	BOLT-FLANGED	4	4	4
130A	130G0825	BOLT-FLANGED	4		
130B	130T0845	BOLT-FLANGED	9		
171	171G0820	BOLT-STUD	2	2	2
601	601A6307	BEARING,BALL	1	1	1

This catalog covers:

FC420V- □ S50

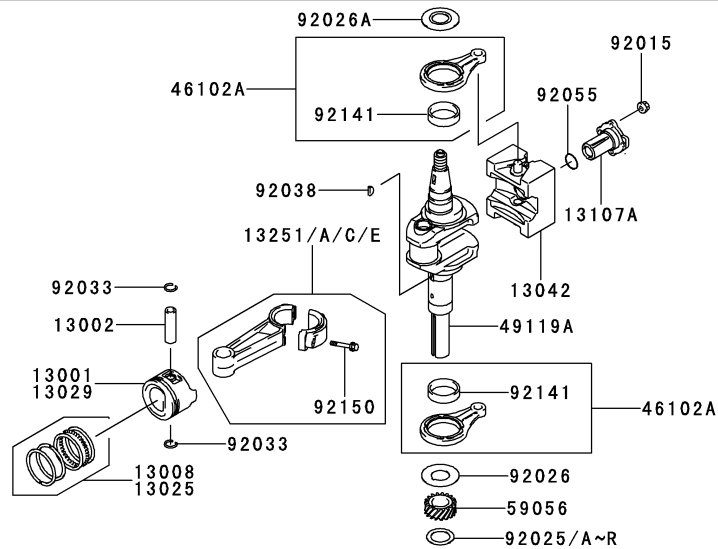
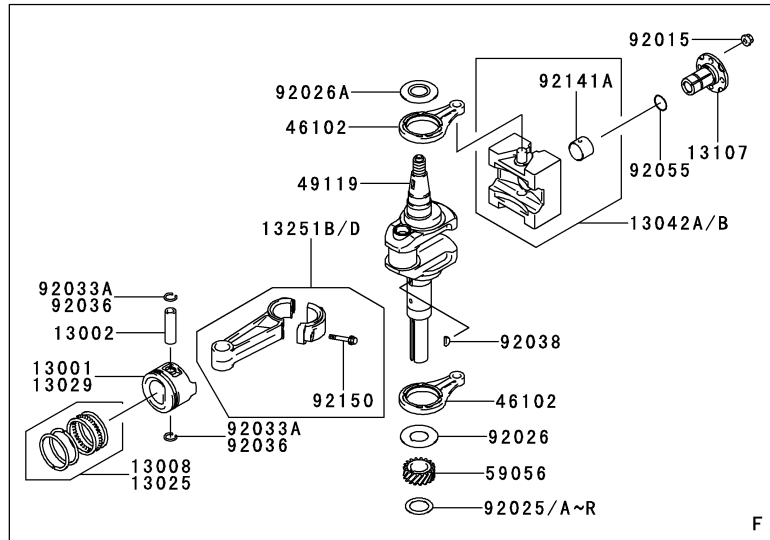
GRID NO.

B-04

This grid covers:

PISTON/CRANKSHAFT

E0120-A157C



Ref. No.	Part No.	Description	Quantity		
			F	G	H
13001	13001-2130	PISTON-ENGINE	1	1	1
13002	13002-2078	PIN-PISTON	1	1	1
13008	13008-6053	RING-SET-PISTON	1	1	1
13025	13025-6020	RING-SET-PISTON L,0.50	AR	AR	AR
13029	13029-2106	PISTON-ENGINE L,0.50	AR	AR	AR
13042	13042-2102	WEIGHT		1	1
13042A	13042-2107	WEIGHT	1		
13042B	13042-6010	WEIGHT	*		
13107	13107-2088	SHAFT	1		
13107A	13107-2232	SHAFT		1	1
13251	13251-2065	ROD-ASSY-CONNECTING			1
13251A	13251-2066	ROD-ASSY-CONNECTING,U/S=0.50			AR
13251B	13251-6039	ROD-ASSY-CONNECTING	1		
13251C	13251-6039	ROD-ASSY-CONNECTING		1	
13251D	13251-6041	ROD-ASSY-CONNECTING,U/S=0.50	AR		
13251E	13251-6041	ROD-ASSY-CONNECTING,U/S=0.50		AR	
46102	46102-2077	ROD	2		
46102A	46102-6007	ROD		2	2
49119	49119-2176	CRANKSHAFT-ASSY	1		
49119A	49119-2193	CRANKSHAFT-ASSY		1	1
59056	59056-2101	GEAR-HELICAL	1	1	1
92015	92015-1193	NUT	4	4	4
92025	92025-2210	SHIM,T=1.18	AR	AR	AR
92025A	92025-2211	SHIM,T=1.215	AR	AR	AR
92025B	92025-2212	SHIM,T=1.25	AR	AR	AR
92025C	92025-2213	SHIM,T=1.285	AR	AR	AR
92025D	92025-2214	SHIM,T=1.32	AR	AR	AR
92025E	92025-2215	SHIM,T=1.355	AR	AR	AR
92025F	92025-2216	SHIM,T=1.39	AR	AR	AR
92025G	92025-2217	SHIM,T=1.425	AR	AR	AR
92025H	92025-2218	SHIM,T=1.46	AR	AR	AR
92025I	92025-2219	SHIM,T=1.495	AR	AR	AR
92025J	92025-2220	SHIM,T=1.53	AR	AR	AR
92025K	92025-2221	SHIM,T=1.565	AR	AR	AR
92025L	92025-2222	SHIM,T=1.60	AR	AR	AR
92025M	92025-2223	SHIM,T=1.635	AR	AR	AR
92025N	92025-2224	SHIM,T=1.67	AR	AR	AR
92025O	92025-2225	SHIM,T=1.705	AR	AR	AR
92025P	92025-2226	SHIM,T=1.74	AR	AR	AR
92025Q	92025-2227	SHIM,T=1.775	AR	AR	AR

This catalog covers:

FC420V- □ S50

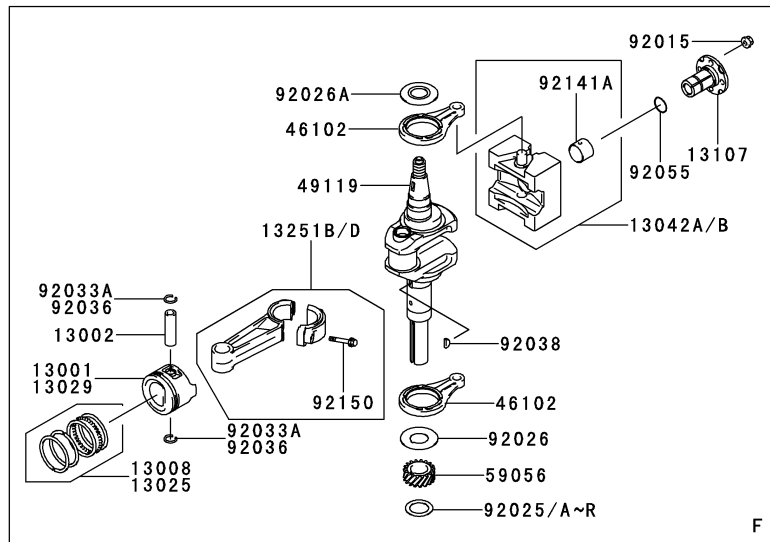
GRID NO.

B-05

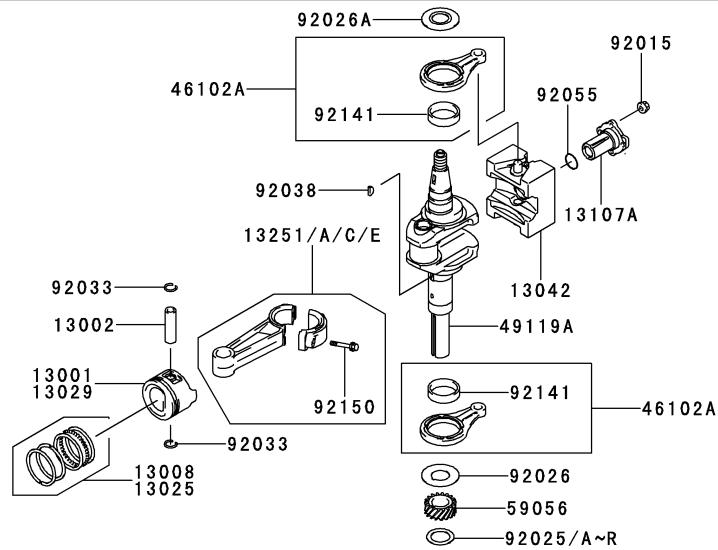
This grid covers:

PISTON/CRANKSHAFT

E0120-A157C



Ref. No.	Part No.	Description	Quantity		
			F	G	H
92025R	92025-2228	SHIM,T=1.81	AR	AR	AR
92026	92026-2156	SPACER	1	1	1
92026A	92026-2160	SPACER	1	1	1
92033	92033-2177	RING-SNAP		2	2
92033A	92033-2177	RING-SNAP	2		
92036	92036-008	RING-SNAP	*		
92038	92038-2094	KEY	1	1	1
92055	92055-2072	RING-O	1	1	1
92141	92141-2108	BEARING-PLANE		2	2
92141A	92141-2112	BEARING-PLANE	1		
92150	92150-2193	BOLT	2	2	2



This catalog covers:

FC420V- **S50**

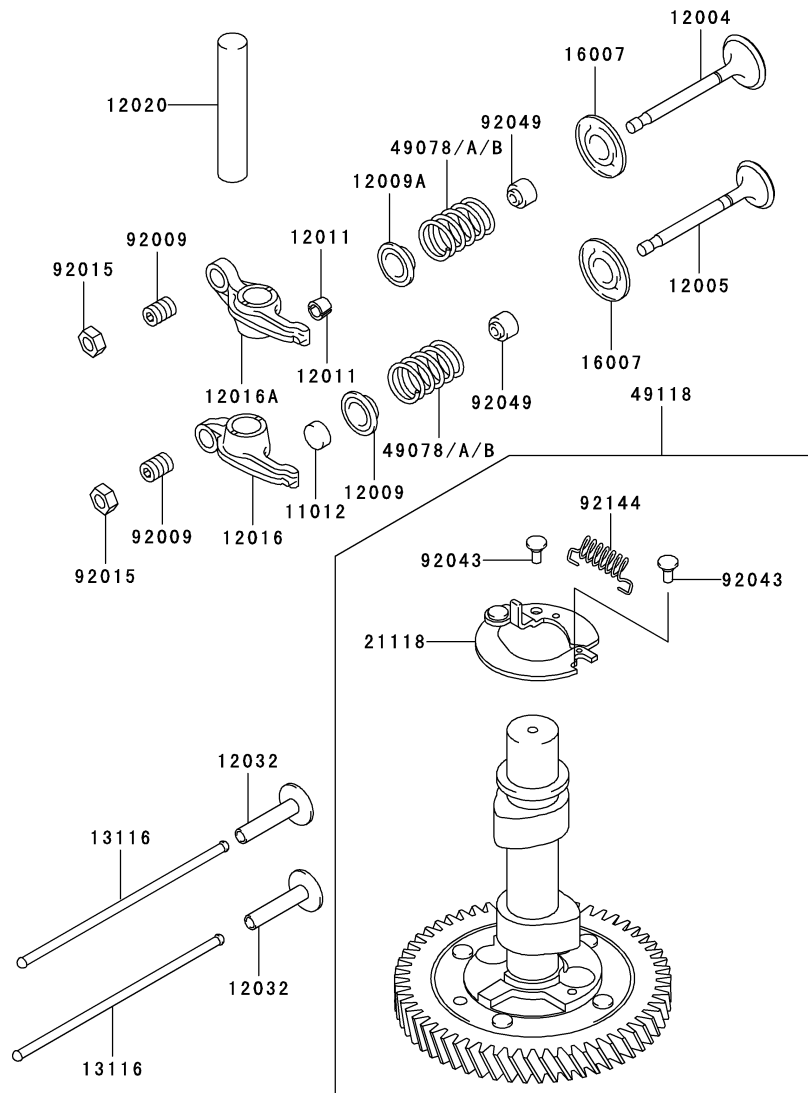
GRID NO.

B-06

This grid covers:

VALVE/CAMSHAFT

E0130-A032F



Ref. No.	Part No.	Description	Quantity		
			F	G	H
11012	11012-2189	CAP,VALVE	1	1	1
12004	12004-2097	VALVE-INTAKE	1	1	1
12005	12005-2086	VALVE-EXHAUST	1	1	1
12009	12009-2058	RETAINER-VALVE SPRING	1	1	1
12009A	12009-2060	RETAINER-VALVE SPRING	1	1	1
12011	12011-2052	COLLET	2	2	2
12016	12016-2054	ARM-ROCKER	1	1	1
12016A	12016-2055	ARM-ROCKER	1	1	1
12020	12020-2058	SHAFT-ROCKER	1	1	1
12032	12032-2068	TAPPET	2	2	2
13116	13116-2056	ROD-PUSH	2	2	2
16007	16007-2052	SEAT-SPRING	2	2	2
21118	21118-2083	DECOMPRESSOR	1	1	1
49078	49078-2068	SPRING-ENGINE VALVE	*		
49078A	49078-2076	SPRING-ENGINE VALVE		2	2
49078B	49078-2076	SPRING-ENGINE VALVE	2		
49118	49118-2132	CAMSHAFT-COMP	1	1	1
92009	92009-2182	SCREW	2	2	2
92015	92015-2139	NUT	2	2	2
92043	92043-2113	PIN	2	2	2
92049	92049-2223	SEAL-OIL	2	2	2
92144	92144-2323	SPRING	1	1	1

FC420-C12759)

FC420-C12760 -)

This catalog covers:

FC420V- □ S50

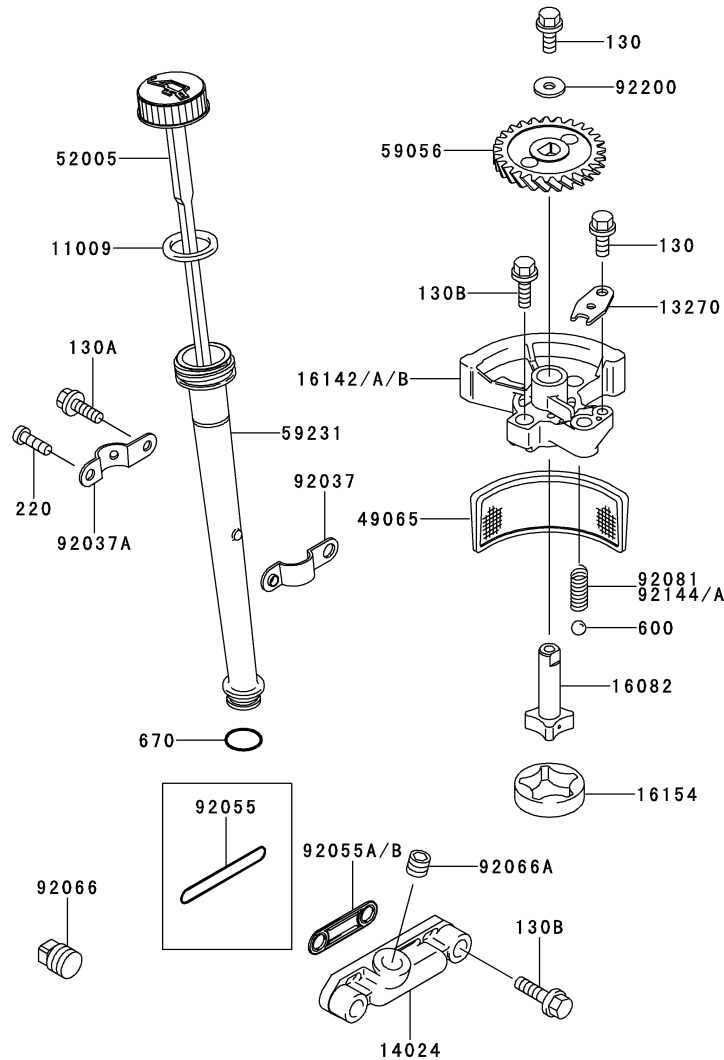
GRID NO.

B-07

This grid covers:

LUBRICATION-EQUIPMENT

E0140-A129C



Ref. No.	Part No.	Description	Quantity		
			F	G	H
11009	11009-2346	GASKET,OIL GAUGE	1	1	1
13270	13270-2054	PLATE	1	1	1
14024	14024-2076	COVER	1	1	1
16082	16082-2059	PUMP-ASSY-OIL	1	1	1
16142	16142-2053	COVER-PUMP	*		
	(-			
		FC420-B46537)			
16142A	16142-2068	COVER-PUMP		1	1
16142B	16142-2068	COVER-PUMP	1		
	(FC420-B46538 -			
		ROTOR-PUMP			
16154	16154-2052	ROTOR-PUMP	1	1	1
49065	49065-2073	FILTER-OIL	1	1	1
52005	52005-2105	GAUGE	1	1	1
59056	59056-2090	GEAR-HELICAL	1	1	1
59231	59231-2062	FILLER	1	1	1
92037	92037-2199	CLAMP	1	1	1
92037A	92037-2200	CLAMP	1	1	1
92055	92055-2079	RING-O	*		
92055A	92055-2188	RING-O		1	1
92055B	92055-2188	RING-O	1		
92066	92066-2097	PLUG	1	1	1
92066A	92066-2211	PLUG	1	1	1
92081	92081-2305	SPRING	*		
	(-			
		FC420-B72873)			
92144	92144-2391	SPRING		1	1
92144A	92144-2391	SPRING	1		
	(FC420-B72874 -			
		WASHER			
92200	92200-2035	WASHER	1	1	1
130	130B0610	BOLT-FLANGED	2	2	2
130A	130B0614	BOLT-FLANGED	1	1	1
130B	130B0830	BOLT-FLANGED	4	4	4
220	220B0608	SCREW-PAN-CROS	1	1	1
600	600A1000	BALL-STEEL	1	1	1
670	670D2016	O RING	1	1	1

This catalog covers:

FC420V- □ **S50**

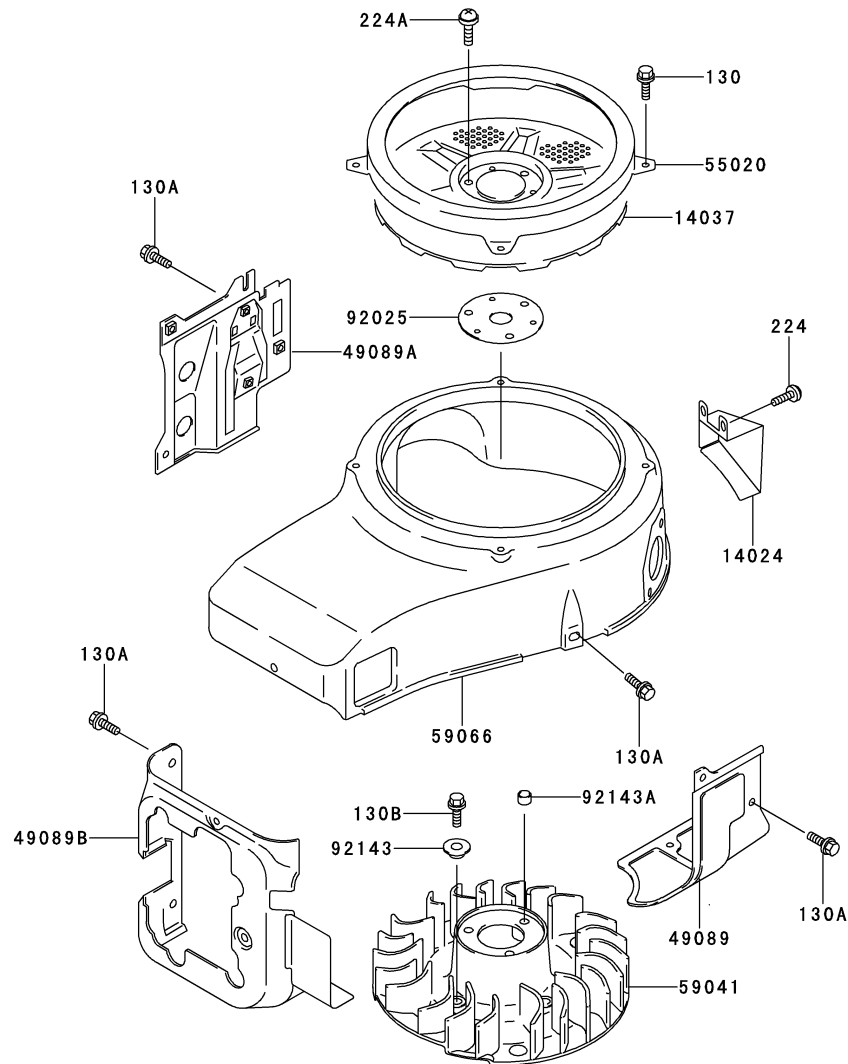
GRID NO.

B-08

This grid covers:

COOLING-EQUIPMENT

E0150-A108A



Ref. No.	Part No.	Description	Quantity		
			F	G	H
14024	14024-2294-9H	COVER	1	1	1
14037	14037-2104-9H	SCREEN	1	1	1
49089	49089-2232-9H	SHROUD-ENGINE	1	1	1
49089A	49089-2233-9H	SHROUD-ENGINE	1	1	1
49089B	49089-2266-9H	SHROUD-ENGINE	1	1	1
55020	55020-2079-9H	GUARD	1	1	1
59041	59041-2087	FAN	1	1	1
59066	59066-2564-9H	HOUSING-FAN	1	1	1
92025	92025-2003	SHIM, T=1.20	AR	AR	AR
92143	92143-2179	COLLAR	4	4	4
92143A	92143-2182	COLLAR, 6.2X7.8X5	3	3	3
130	130B0610	BOLT-FLANGED	4	4	4
130A	130G0612	BOLT-FLANGED	12	12	12
130B	130G0614	BOLT-FLANGED	4	4	4
224	224B0408	SCREW-PAN-WP-CROS	2	2	2
224A	224B0616	SCREW-PAN-WP-CROS	3	3	3

This catalog covers:

FC420V- □ S50

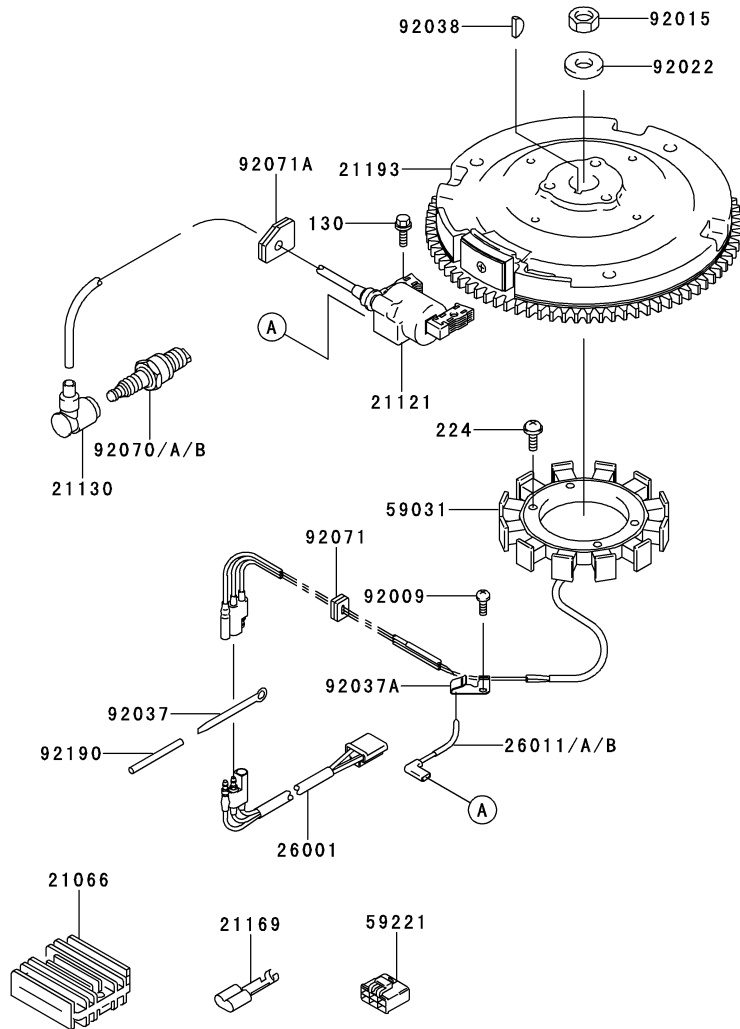
GRID NO.

B-09

This grid covers:

ELECTRIC-EQUIPMENT

E0160-A397B



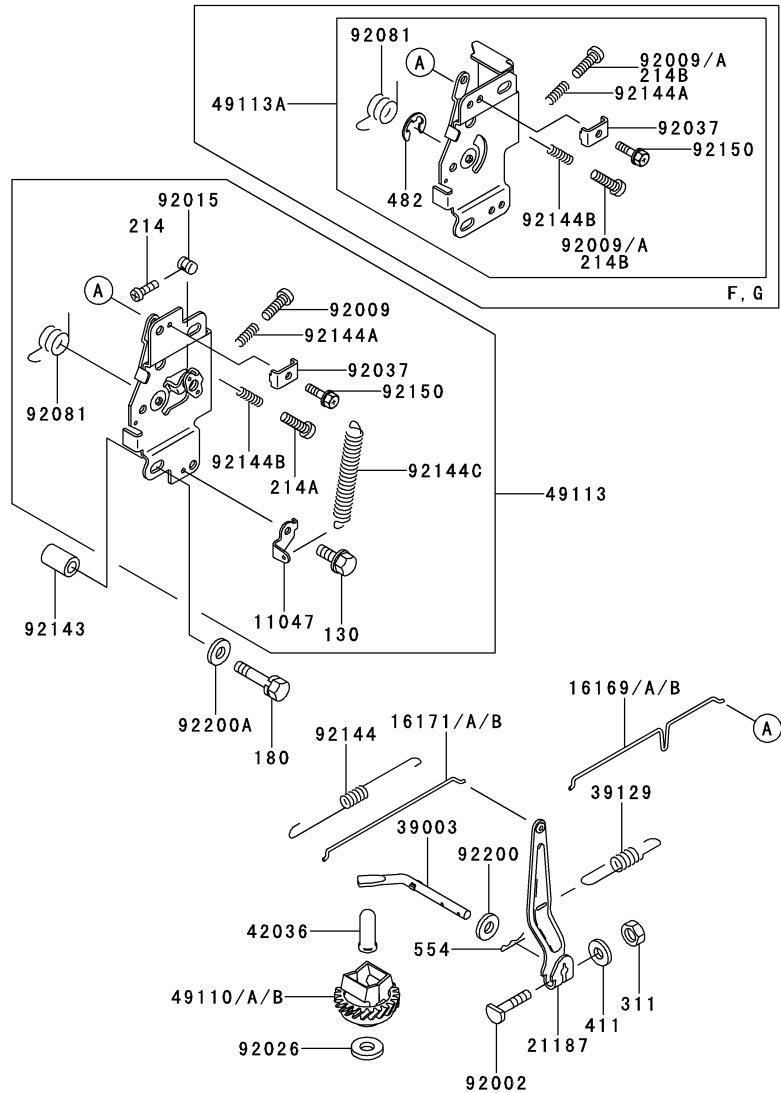
Ref. No.	Part No.	Description	Quantity		
			F	G	H
21066	21066-2004	REGULATOR-VOLTAGE	1	1	1
21121	21121-2086	COIL-IGNITION	1	1	1
21130	21130-2060	CAP-SPARK PLUG	1	1	1
21169	21169-2055	TERMINAL	6	6	6
21193	21193-2154	FLYWHEEL-ASSY	1	1	1
26001	26001-2150	HARNES	1	1	1
26011	26011-2313	WIRE-LEAD	*		
		(FC420-B52571)			
26011A	26011-2330	WIRE-LEAD,L=160		1	1
26011B	26011-2330	WIRE-LEAD,L=160	1		
		(FC420-B52572 -)			
59031	59031-2003	COIL-CHARGING	1	1	1
59221	59221-2099	CONNECTOR-CORD	1	1	1
92009	92009-2308	SCREW	1	1	1
92015	92015-2167	NUT	1	1	1
92022	92022-2229	WASHER	1	1	1
92037	92037-2063	CLAMP	1	1	1
92037A	92037-2177	CLAMP	1	1	1
92038	92038-2094	KEY	1	1	1
92070	92070-2075	PLUG-SPARK,RN11YC(CHAMP),SOLI	*		
92070A	92070-2088	PLUG-SPARK,BPR5ES(NGK),SOLID		1	1
92070B	92070-2088	PLUG-SPARK,BPR5ES(NGK),SOLID	1		
92071	92071-2099	GROMMET	1	1	1
92071A	92071-2112	GROMMET	1	1	1
92190	92190-2167	TUBE	1	1	1
130	130B0520	BOLT-FLANGED	2	2	2
224	224B0620	SCREW-PAN-WP-CROS	4	4	4

This catalog covers:
FC420V- □ S50

GRID NO. This grid covers:

B-10 CONTROL-EQUIPMENT

E0170-A330A

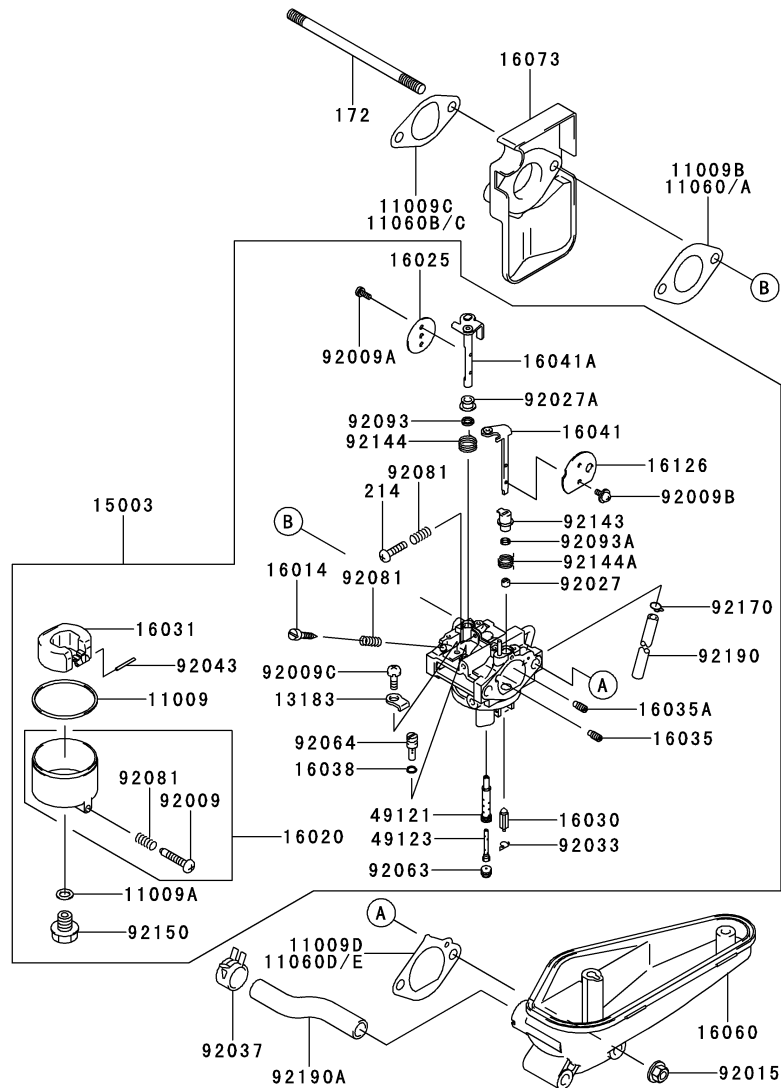


Ref. No.	Part No.	Description	Quantity		
			F	G	H
11047	11047-2028	BRACKET			1
16169	16169-2088	LINK-CHOKE	*		
16169A	16169-2130	LINK-CHOKE		1	1
16169B	16169-2130	LINK-CHOKE	1		
16171	16171-2056	LINK,GOVERNOR	*		
16171A	16171-2079	LINK,GOVERNOR		1	1
16171B	16171-2079	LINK,GOVERNOR	1		
21187	21187-2055	ARM-ASSY	1	1	1
39003	39003-2073	ARM-PIVOT	1	1	1
39129	39129-2011	SPRING-GOVERNOR	1	1	1
42036	42036-2060	SLEEVE	1	1	1
49110	49110-2067	GOVERNOR-ASSY	*		
49110A	49110-2084	GOVERNOR-ASSY		1	1
49110B	49110-2084	GOVERNOR-ASSY	1		
49113	49113-2098	PANEL-COMP-CONTROL			1
49113A	49113-2103	PANEL-COMP-CONTROL	1	1	
92002	92002-2269	BOLT	1	1	1
92009	92009-2113	SCREW		2	1
92009A	92009-2113	SCREW	2		
92015	92015-2120	NUT			1
92026	92200-2036	SPACER	1	1	1
92037	92037-2020	CLAMP	1	1	1
92081	92081-2316	SPRING	1	1	1
92143	92143-2006	COLLAR	2	2	2
92144	92144-2033	SPRING	1	1	1
92144A	92144-2220	SPRING	1	1	1
92144B	92144-2266	SPRING	1	1	1
92144C	92144-2281	SPRING			1
92150	92150-2182	BOLT,5X18	1	1	1
92200	92200-2029	WASHER,6.5X11.5X2.0	1	1	1
92200A	92200-2070	WASHER	2	2	2
130	130B0508	BOLT-FLANGED			1
180	180B0635	BOLT-UPSET-WS	2	2	2
214	214B0412	SCREW-PAN+-			1
214A	214B0420	SCREW-PAN+-			1
214B	214B0425	SCREW-PAN+-	*		
311	311B0600	NUT-HEX	1	1	1
411	411B0600	WASHER-PLAIN	1	1	1
482	482L0100	CIRCLIP-TYPE-E	1	1	
554	554A0600	PIN-SNAP	1	1	1

This catalog covers:
FC420V- □ S50

GRID NO. This grid covers:
B-11 CARBURETOR

E0180-A252B

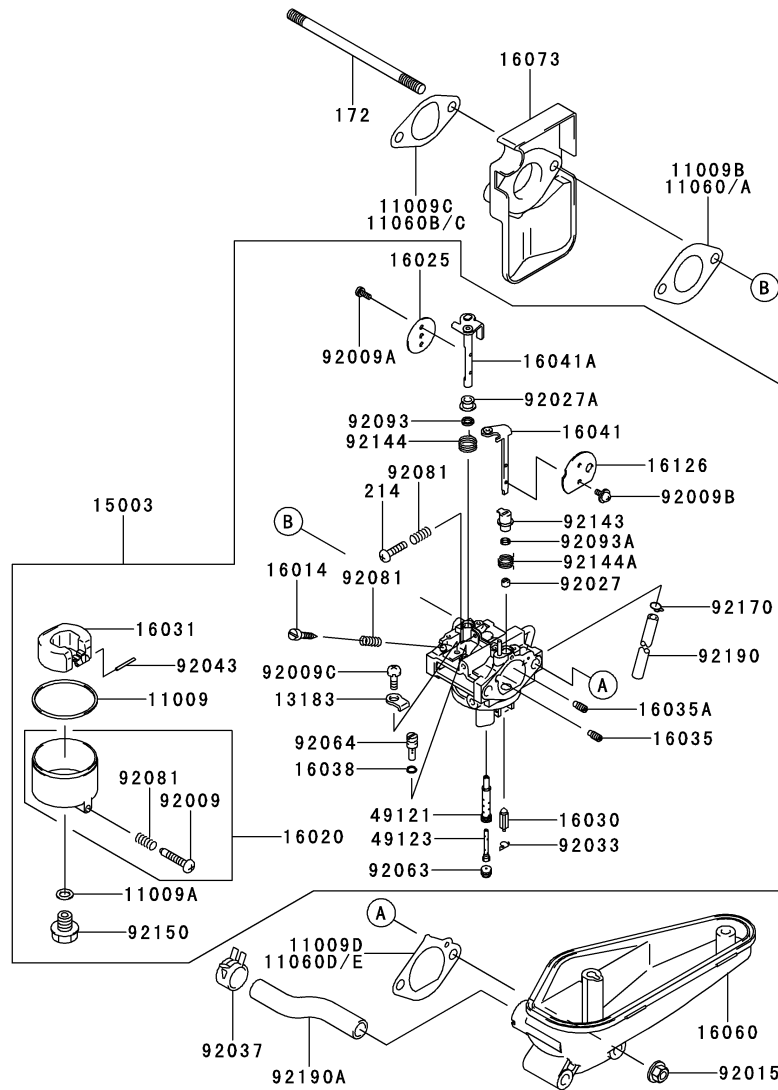


Ref. No.	Part No.	Description	Quantity		
			F	G	H
11009	11009-2024	GASKET	1	1	1
11009A	11009-2025	GASKET	1	1	1
11009B	11009-2944	GASKET,CARBURETOR	*		
	(-			
11009C	11009-2945	GASKET,INSULATOR	*		
	(-			
11009D	11009-2946	GASKET,INTAKE PIPE	*		
	(-			
		FC420-B45447)			
11060	11060-2339	GASKET,CARBURETOR		1	1
11060A	11060-2339	GASKET,CARBURETOR	1		
	(FC420-B45448 -			
)			
11060B	11060-2340	GASKET,INSULATOR		1	1
11060C	11060-2340	GASKET,INSULATOR	1		
	(FC420-B45448 -			
)			
11060D	11060-2341	GASKET,INTAKE PIPE		1	1
	(-			
		FC420-B45448 -			
)			
11060E	11060-2341	GASKET,INTAKE PIPE	1		
	(-			
		FC420-B45448 -			
)			
13183	13183-2252	PLATE	1	1	1
15003	15003-2130	CARBURETOR-ASSY.	1	1	1
16014	16014-2010	SCREW-PILOT AIR	1	1	1
16020	16020-2109	CHAMBER-FLOAT	1	1	1
16025	16025-2137	VALVE-THROTTLE,#90	1	1	1
16030	16030-2073	VALVE-FLOAT	1	1	1
16031	16031-2066	FLOAT	1	1	1
16035	16035-2056	JET-AIR,#1.8	1	1	1
16035A	16035-2058	JET-AIR,#1.1	1	1	1
16038	16038-024	GASKET	1	1	1
16041	16041-2163	SHAFT-CARBURETOR,CHOKE	1	1	1
16041A	16041-2215	SHAFT-CARBURETOR,THROTTLE	1	1	1
16060	16060-6001	PIPE-INTAKE	1	1	1
16073	16073-6001	INSULATOR	1	1	1
16126	16126-2151	VALVE,CHOKE	1	1	1
49121	49121-2152	NOZZLE-MAIN,#65A	1	1	1
49123	49123-2068	HOLDER-MAIN JET	1	1	1
92009	92009-2015	SCREW	1	1	1
92009A	92009-2080	SCREW	2	2	2
92009B	92009-2081	SCREW	2	2	2
92009C	92009-2244	SCREW	1	1	1
92015	92015-1193	NUT	2	2	2
92027	92027-2003	COLLAR	1	1	1

This catalog covers:
FC420V- □ S50

GRID NO. This grid covers:
C-03 CARBURETOR

E0180-A252B



Ref. No.	Part No.	Description	Quantity		
			F	G	H
92027A	92027-2025	COLLAR	1	1	1
92033	92033-2067	RING-SNAP	1	1	1
92037	92037-2012	CLAMP	1	1	1
92043	92043-2006	PIN	1	1	1
92063	92063-2206	JET-MAIN,#100	1	1	1
92064	92064-2079	JET-PILOT,#60	1	1	1
92081	92081-2009	SPRING	3	3	3
92093	92093-2002	SEAL	1	1	1
92093A	92093-2069	SEAL	1	1	1
92143	92143-2142	COLLAR	1	1	1
92144	92144-2037	SPRING	1	1	1
92144A	92144-2160	SPRING	1	1	1
92150	92150-2146	BOLT	1	1	1
92170	92170-2023	CLAMP	1	1	1
92190	92190-2011	TUBE,4.5X6.5X100	1	1	1
92190A	92190-2066	TUBE,11.6X16X116	1	1	1
172	172G06115	BOLT-STUD	2	2	2
214	214B0414	SCREW-PAN+-	1	1	1

This catalog covers:

FC420V- **S50**

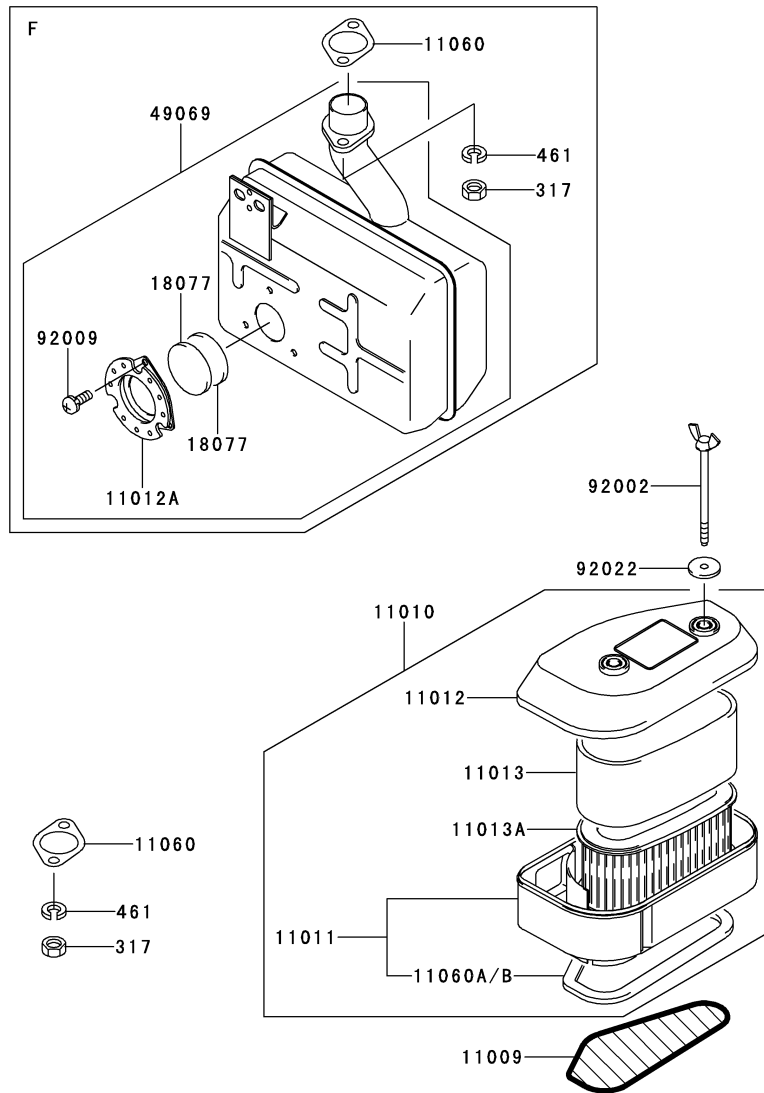
GRID NO.

C-04

This grid covers:

AIR-FILTER/MUFFLER

E0190-A413A



Ref. No.	Part No.	Description	Quantity		
			F	G	H
11009	11009-2505	GASKET,AIR FILTER	1	1	1
11010	11010-2421	FILTER-ASSY-AIR	1	1	1
11011	11011-2227	CASE-AIR FILTER	1	1	1
11012	11012-2223	CAP,AIR FILTER	1	1	1
11012A	11012-2383-9Y	CAP	1		
11013	11013-2109	ELEMENT-AIR FILTER	1	1	1
11013A	11013-2141	ELEMENT-AIR FILTER	1	1	1
11060	11060-2382	GASKET,MUFFLER	1	1	1
11060A	11060-2446	GASKET		1	1
11060B	11060-2446	GASKET	1		
18077	18077-2052	ARRESTER-SPARK	2		
49069	49069-2203-9Y	MUFFLER-ASSY	1		
92002	92002-2274	BOLT	2	2	2
92009	92009-2166	SCREW,5X8	7		
92022	92022-2220	WASHER	2	2	2
317	317R0800	NUT-HEX-SMALL	2	2	2
461	461F0800	WASHER-SPRING	2	2	2

This catalog covers:

FC420V- □ S50

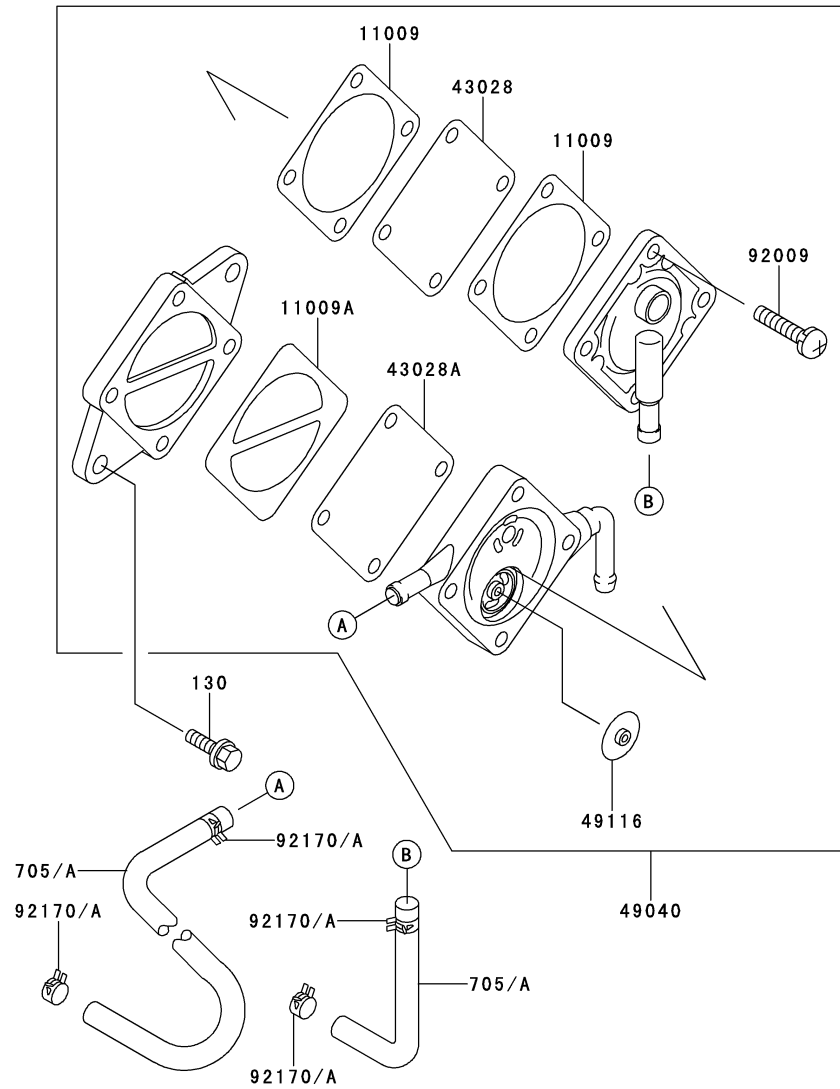
GRID NO.

C-05

This grid covers:

FUEL-TANK/FUEL-VALVE

E0200-A042H



Ref. No.	Part No.	Description	Quantity		
			F	G	H
11009	11009-2763	GASKET,FUEL PUMP	2	2	2
11009A	11009-2764	GASKET,FUEL PUMP	1	1	1
43028	43028-2068	DIAPHRAGM	1	1	1
43028A	43028-2069	DIAPHRAGM	1	1	1
49040	49040-2066	PUMP-FUEL	1	1	1
49116	49116-2055	VALVE-ASSY	2	2	2
92009	92009-2212	SCREW	4	4	4
92170	92170-2088	CLAMP	2	4	4
92170A	92170-2088	CLAMP	2		
	(FC420-C08195 -)	
130	130G0614	BOLT-FLANGED	2	2	2
705	705A061000	TUBE-BRAID	1	2	2
705A	705A061000	TUBE-BRAID	1		
	(FC420-C08195 -)	

This catalog covers:

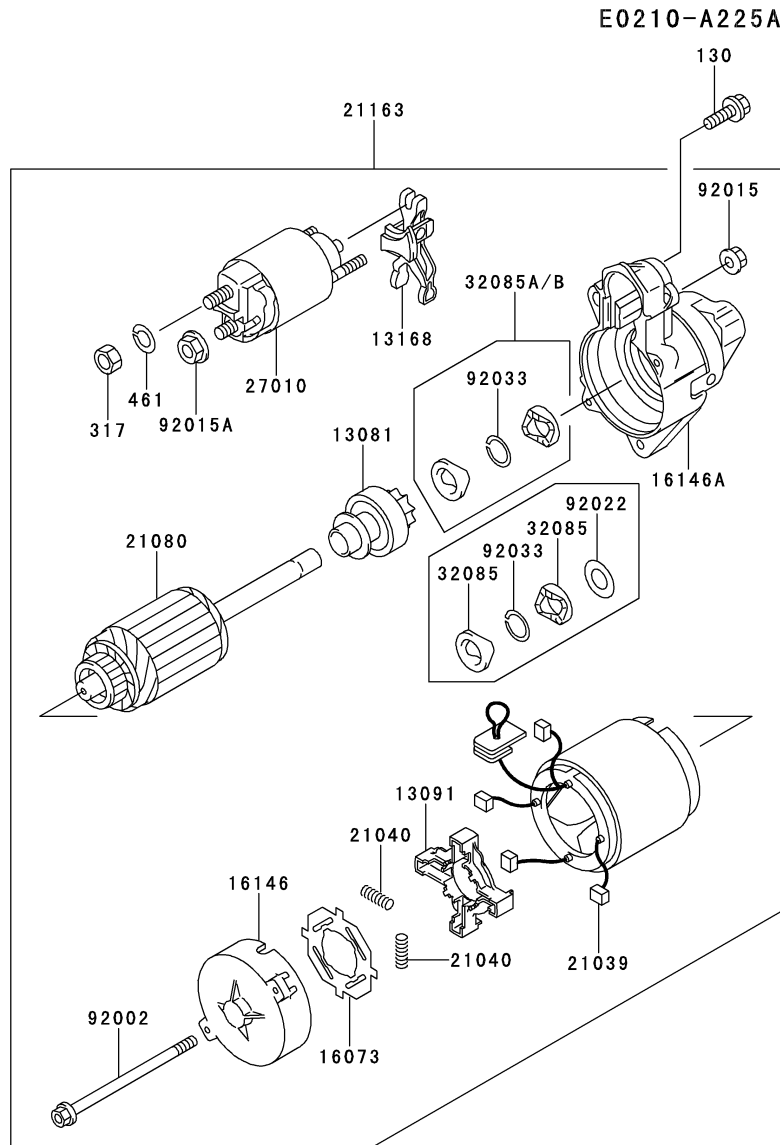
FC420V- **S50**

GRID NO.

C-06

This grid covers:

STARTER



Ref. No.	Part No.	Description	Quantity		
			F	G	H
13081	13081-2085	CLUTCH-ASSY	1	1	1
13091	13091-2068	HOLDER,BRUSH	1	1	1
13168	13168-2131	LEVER,SHIFT	1	1	1
16073	16073-2098	INSULATOR	1	1	1
16146	16146-2077	COVER-ASSY	1	1	1
16146A	16146-2106	COVER-ASSY	1	1	1
21039	21039-2059	BRUSH	4	4	4
21040	21040-2052	SPRING-BRUSH	4	4	4
21080	21080-2054	ARMATURE	1	1	1
21163	21163-2073	STARTER-ELECTRIC	1	1	1
27010	27010-2122	SWITCH	1	1	1
32085	32085-2066	STOPPER	*		
32085A	32085-2097	STOPPER		1	1
32085B	32085-2097	STOPPER	1		
92002	92002-2277	BOLT	2	2	2
92015	92015-2146	NUT	2	2	2
92015A	92015-2147	NUT	1	1	1
92022	92022-2218	WASHER	1		
92033	92033-2081	RING-SNAP	1	1	1
130	130B0835	BOLT-FLANGED	2	2	2
317	317B0800	NUT-HEX-SMALL	1	1	1
461	461F0800	WASHER-SPRING	1	1	1

This catalog covers:

FC420V- **S50**

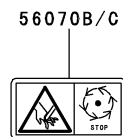
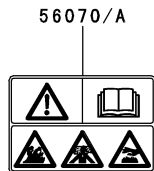
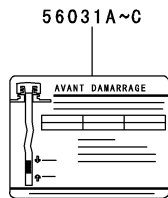
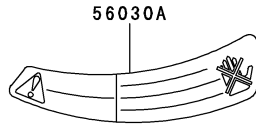
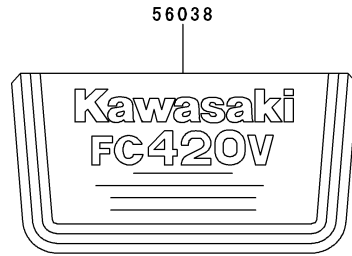
GRID NO.

D-03

This grid covers:

LABEL

F0290-A427B



Ref. No.	Part No.	Description	Quantity		
			F	G	H
56030	56030-2142	LABEL			
	(-			
	FC420-C15121)		*		
56030A	56030-2382	LABEL			
	(-			
	FC420-C15121)		*		
56031	56031-2389	LABEL-MANUAL	1	1	1
56031A	56031-2390	LABEL-MANUAL			
	(-			
	FC420-C15121)		*		
56031B	56031-2486	LABEL-MANUAL		1	1
56031C	56031-2486	LABEL-MANUAL	1		
	(FC420-C15122 -			
)				
56038	56038-2504	LABEL-BRAND	1	1	1
56070	56070-2021	LABEL-WARNING		1	1
56070A	56070-2021	LABEL-WARNING	1		
	(FC420-C15122 -			
)				
56070B	56070-2022	LABEL-WARNING		1	1
56070C	56070-2022	LABEL-WARNING	1		
	(FC420-C15122 -			
)				

This catalog covers:

FC420V- **S50**

GRID NO.

H-09

This grid covers:

PART NAME INDEX

AIR-FILTER/MUFFLER.....	C-04
CARBURETOR.....	B-11
CARBURETOR.....	C-03
CONTROL-EQUIPMENT.....	B-10
COOLING-EQUIPMENT.....	B-08
CYLINDER/CRANKCASE.....	B-03
ELECTRIC-EQUIPMENT.....	B-09
FUEL-TANK/FUEL-VALVE.....	C-05
LABEL.....	D-03
LUBRICATION-EQUIPMENT.....	B-07
PISTON/CRANKSHAFT.....	B-04
PISTON/CRANKSHAFT.....	B-05
STARTER.....	C-06
VALVE/CAMSHAFT.....	B-06

