

GENERAL PURPOSE ENGINE

GXV160H2

PARTS CATALOGUE

1

FOREWORD INDEX

1

ENGINE GROUP

2

PART NUMBER INDEX

3

PART NAME INDEX

4

Instruction for use of parts catalogue

- **This parts catalogue was prepared based on the latest information available as of July 07, 2004.**
- See the parts catalogue news for any revision that is made after July 07, 2004.
- **Always specify the part number when ordering a part.**
 - Check the model, type, serial numbers, color, maker, and the size as needed before ordering a part.
 - Note that the illustrations (part drawings) can differ from the actual parts in shape. They are given just to help you to refer to the parts.
- **When modifications or additions to this parts catalogue are made, a revised edition will be issued at an appropriate time, with successively progressing revision numbers on the cover. We recommend obtaining such revisions in order to keep your parts catalogue up-to-date at all times. To check whether a parts catalogue revision has been issued, please contact your Honda distributor.**

Initial version issue date July 07, 2004
Honda Motor Co., Ltd.

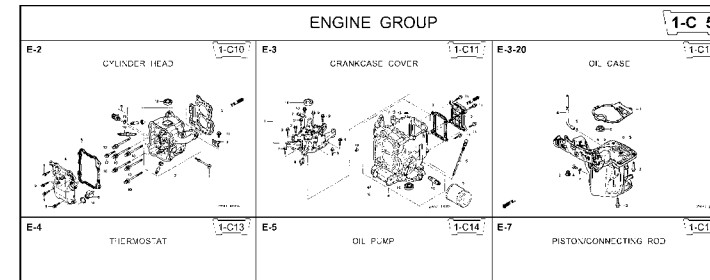
CONTENTS

	Page	Address No.	
● How to refer to the part information	2	B 2	1
● Part catalogue structure	3	B 3	
● When the parts were revised	4	B 4	
● Abbreviations used in the parts catalogue.....	4	B 4	
● How to check the part block and serial numbers.....	5	B 5	
● Models, parts catalogue codes and applicable serial numbers	6	B 6	
● Features of each type.....	7	B 7	
● Fuel hose, general purpose hoses and vinyl hose.....	8	B 8	
● Illustrated index	9	B 9	
● ENGINE GROUP.....	11	C 1	2
● PART NO. INDEX.....	31	E 1	3
● PART NAME INDEX.....	33	F 1	4



How to refer to the part information

A Reference with "Illustrated index"



B Reference with "Part number index"

PART NO. INDEX

Part Number	Address	Page	Ref.	Part Number	Address	Page
06000				15212-ZW9-000	1-C14	3C
06316-ZW9-000	1-G9	88	1	15220-ZW9-003	1-C14	3C
11000				15332-ZW9-000	1-E8	55
11300-ZW9-405	1-C11	27	1	15332-ZW9-A30	1-E11	58
11300-ZW9-406	1-C11	27	1	15400-PFB-004	1-C11	27
11340-ZW9-000	1-C11	27	2	15422-ZW9-000	1-C14	3C
11342-ZW9-000	1-C11	27	3	15473-881-000	1-C14	3C
11381-ZW9-003	1-C12	28	1	15474-ZW9-000	1-C14	3C
				15611-921-000	1-C10	2E
				15655-ZW9-000	1-C11	27
				16000		
12000				16010-ZV4-005	1-D4	3E
12000-ZW9-405ZA	1-C11	27	4	16011-ZV4-005	1-D4	3E
12155-ZV4-A00	1-C13	29	1	16013-ZW9-003	1-D4	3E
12166-ZW9-000	1-C10	26	1	16016-ZW9-003	1-D4	3E
12209-GB4-681	1-C16	32	1	16016-ZW9-721	1-D4	3E
12210-ZW9-405ZA	1-C10	26	2	16023-ZW9-003	1-D4	3E
12216-ZE2-300	1-E8	55	1	16024-ZV4-650	1-D4	3E
	1-E11	58	1	16028-ZV4-650	1-D4	3E

C Reference with "Part name index"

PART NAME INDEX

Part name	Address	Page	Ref.
[A]			
ABSORBER , FUEL	1-E15	62	5
ARMATURE COMP.	1-D11	43	7
ARM COMP. , LINK JOINT	1-G6	85	18
ARM COMP. , SHIFT LINK	1-G6	85	14
ARM COMP. , TILT	1-F15	79	20
ARM , FUEL PUMP ROCKER	1-C16	32	4
ARM , REVERSE LOCK	1-F15	79	18
ARM , SHIFT LINK	1-F11	74	7
ARM , STOPPER	1-D1	33	12
ARM , THROTTLE REMOTE	1-F11	74	6
ARM , VALVE ROCKER	1-C16	32	3
[B]			
BAG , TOOL , 160MM	1-G5	84	10
BAND	1-G6	86	37
BAND B1 , WIRE	1-F6	69	1
BAND , CORD	1-F3	67	18
BAND , TUBE CLIP , 11MM	1-E15	63	20
BAND , TUBE CLIP , 12.5MM	1-E15	63	19

Address No. 1-C10

E-2 CYLINDER HEAD

Block No.

Ref No.

Ref. No.	Part No.	Description	Reqd. QTY						Serial No.	Parts catalogue code
			BF 9901	BFP 9901	BF 1001	BFP 1001	BF 1051	BFP 1051		
1	12166-ZW9-000	STOPPER, ENGINE SIDE	2	2	2	2	2			
2	12210-ZW9-000ZA	HEAD COMP., CYLINDER	1	1	1	1	1			
3	12251-ZW9-003	GASKET, CYLINDER HEAD	1	1	1	1	1			
4	12310-ZW9-000	COVER COMP., HEAD	1	1	1	1	1			
5	12312-ZW9-000	PACKING, HEAD COVER	1	1	1	1	1			
6	15611-921-000	CAP, OIL (NO GAUGE)	1	1	1	1	1			
7	16617-ZW9-000	HOLDER, CABLE	1	1	1	1	1	SC,SG		
	16617-ZW9-010		1	1	1	1	1	1001801	LHC,LHD	
8	35673-ZW5-003	SENSOR ASSY., WATER	1	1	1	1	1			
9	90003-ZW9-000	BOLT, FLANGE, 6X22	4	4	4	4	4			
10	90007-ZW9-003	BOLT, FLANGE, 8X83	6	6	6	6	6			
11	90011-ZW9-000	BOLT, FLANGE, 6X14 (CT200)	1	1	1	1	1			
12	90020-ZW9-000	BOLT, FLANGE, 8X40	2	2	2	2	2			
13	91205-KJ9-003	OIL SEAL, 50X32X6	1	1	1	1	1			
14	91301-805-000	O-RING, 26X2.7	1	1	1	1	1			
15	91307-PK2-005	O-RING, 9.5X1.5 (HONDA KIKAKI)	1	1	1	1	1			
16	98059-55916	PLUG, SPARK (CR5EH-D)	2	2	2	2	2			
	98059-55926	PLUG, SPARK (U16FERD)	2	2	2	2	2			

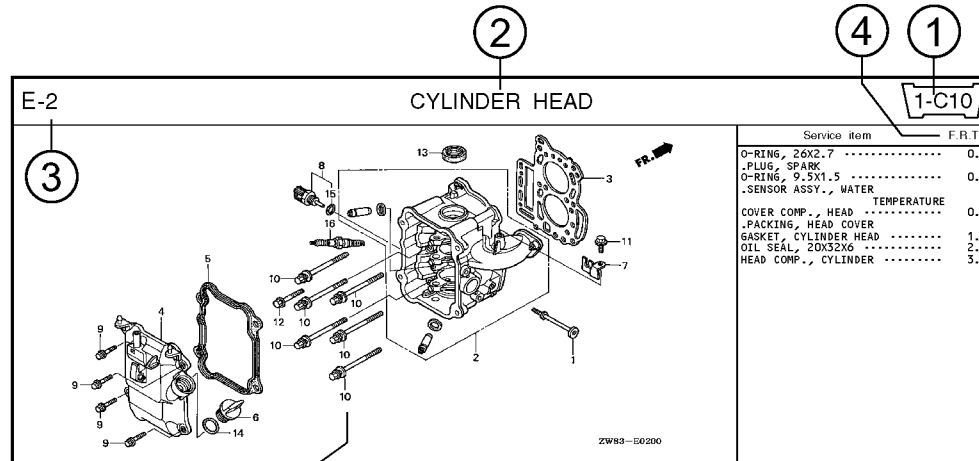
Service item F.R.T.

- O-RING, 26X2.7 0.1
- PLUG, SPARK 0.2
- O-RING, 9.5X1.5 0.2
- SENSOR ASSY., WATER TEMPERATURE 0.3
- COVER COMP., HEAD 0.3
- PACKING, HEAD COVER 1.8
- GASKET, CYLINDER HEAD 2.4
- OIL SEAL, 20X32X6 2.4
- HEAD COMP., CYLINDER 3.1

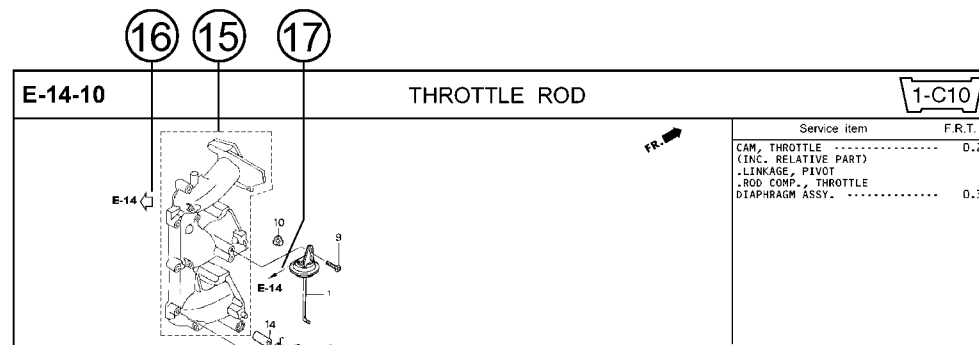
2000.09.20 E

Page No.

Part catalogue structure



Ref. No.	Part No.	Description	Reqd. QTY						Serial No.	Parts catalogue code
			BF 9/9D1	BFP 9/9D1	BF 10D1	BFP 10D1	BF 10B1	BFP 10B1		
1	12166-zw9-000	STOPPER, ENGINE SIDE	2	2	2	2	2	2		
2	12210-zw9-000ZA	HEAD COMP., CYLINDER *NHS* DARK GRAY	1	1	1	1	1	1		
3	12251-zw9-003	GASKET, CYLINDER HEAD	1	1	1	1	1	1		
4	12310-zw9-000	COVER COMP., HEAD	1	1	1	1	1	1		
5	12312-zw9-000	PACKING, HEAD COVER	1	1	1	1	1	1		
6	15611-921-000	CAP, OIL (NO GAUGE)	1	1	1	1	1	1		
7	16617-zw9-000	HOLDER, CABLE	1	1	1	1	1	1	SC,SG	
	16617-zw9-010		1	1	1	1	1	1	1001800 LHC,LHD	



① Address number

- Address No. is provided (in place of the page No.) to help you refer to the part with the part No. or part name.

② Block title ③ Block number

④ Service item/Flat rate time

⑤ Reference number

- Title number marked with the parenthesis or parentheses indicates that it continues from the previous page.

⑥ Part number ⑦ Honda color code

⑧ Description

⑨ Assemblies

- Sections framed with broken lines in the exploded view drawings are available as complete assemblies. (Their individual parts can also be obtained.)

⑩ Color description

⑪ Note

- Notes are shown with the parentheses in the part name column.

⑫ Required quantity

- Required QTY shown in the parenthesis or parentheses indicates the optional part.
- Required QTY marked with "N" Indicates the optional part that should be selected as needed.
- Required QTY indicates the number of the part used in the block.

⑬ Serial number

⑭ Type

- When the type column is blank, it indicates that the part is applicable to all types.
- As the type of the actual unit may differ from the "parts catalogue, type" please refer to "Models, types and applicable serial numbers" for confirmation.

⑮

- Parts enclosed within a dotted line are covered in a different block.

⑯

- A hollow arrow indicates the block No. for the parts enclosed within a dotted line .

⑰

- A solid arrow indicates the block No. the part in question is connected to.

When the parts were revised

Abbreviations used in the parts catalogue

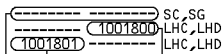
1



Be sure to check the serial number!!



Ref. No.	Part No.	Description	Reqd. QTY						Serial No.
			BF 99D1	BFP 9.9D1	BF 10D1	BFP 10D1	BF 10B1	BFP 10B1	
1	12166-ZW9-000	STOPPER, ENGINE SIDE	2	2	2	2	2	2	
2	12210-ZW9-000ZA	HEAD COMP., CYLINDER *NH8*..... DARK GRAY	1	1	1	1	1	1	
3	12251-ZW9-003	GASKET, CYLINDER HEAD	1	1	1	1	1	1	
4	12310-ZW9-000	COVER COMP., HEAD	1	1	1	1	1	1	
5	12312-ZW9-000	PACKING, HEAD COVER	1	1	1	1	1	1	
6	15611-921-000	CAP, OIL (NO GAUGE)	1	1	1	1	1	1	
7	16617-ZW9-000	HOLDER, CABLE (###).....	1	1	1	1	1	1	
	16617-ZW9-010	1	1	1	1	1	1	



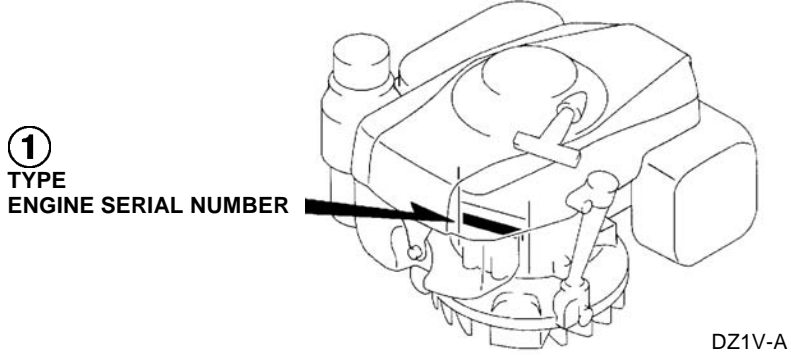
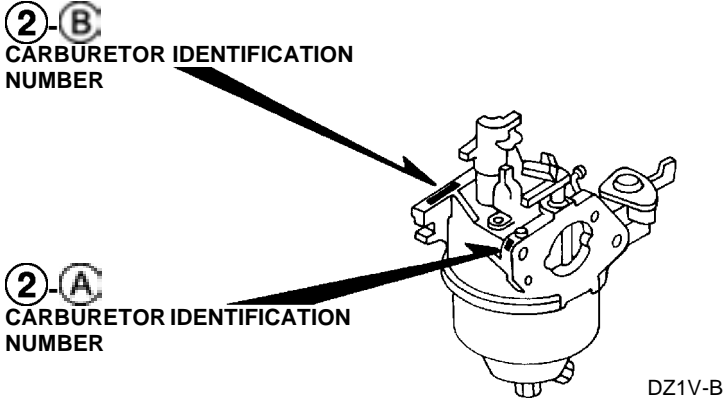
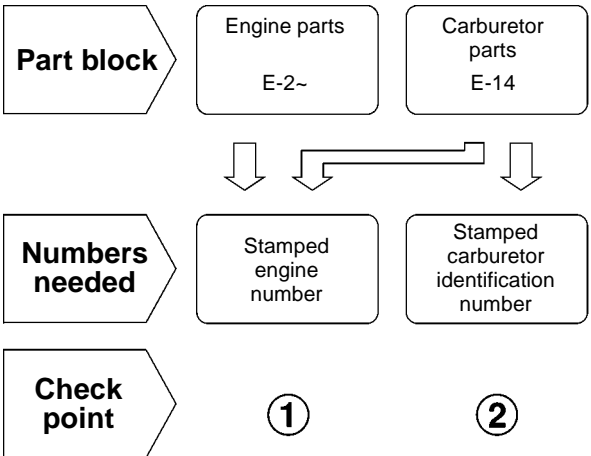
The number has been used from the initial model without revision. When shown at the left side, it is applicable to the models of No.1001801 and the subsequent numbers. When shown at the right side, it is applicable to the models up to No.1001800.

• The parts listed with "###" at the end of the parts name have limited supply period (parts not for sale).

• The following abbreviations are used in the parts name column.

- A Ampere
- A.C. Alternating current
- ASSY. Assembly
- AT. Automatic transmission
- C.D.I. Capacitive discharge ignition
- COMP. ... Complete
- D.C. Direct current
- EX. Exhaust
- G.F.C.I ... Ground fault circuit interruptor
- HEX. Hexagonal
- H.S.T. Hydrostatic transmission
- FR.Front
- IN.Inlet
- L (100L) .Link (100 Links)
- L.Left
- MMMillimeter
- MT.Manual Transmission
- P.T.O.Power take off
- R.Right
- RR.Rear
- STD.Standard
- T (22T) ...Tooth (22 Teeth)
- V Volt
- WWatt

How to check the part block and serial numbers



Models, parts catalogue codes and applicable serial numbers

- Models, parts catalogue codes and applicable serial Nos. given in this parts catalogue can be identified as follows.

Model	Type	Parts catalogue type	Applicable engine serial No.	Applicable carburetor identification No.
GXV160H2	A14	A14	GJAAH-1000001~	BE66J A
	C12	C12		
	N1	N1		
	N1F	N1F		
	N4	N4		
	N5	N5		
	N6	N6		
	N6S	N6S		
	SFC	SFC		
	SFL	SFL		
	SFL1	SFL1		
	SFY1	SFY1		
	T1AH	T1AH		

* Of carburetor identification numbers, only the portions underlined in the example below are used for registration.

BE 66J A KC ナ
Ⓐ Ⓑ

Features of each type

- See the following table for the features of each type.

Specifications		Model	GXV160H2												
		Type	A14	C12	N1	N1F	N4	N5	N6	N6S	SFC	SFL	SFL1	SFY1	T1AH
Crankshaft	22.2mm Ø Straight		●		●	●									
	25.4mm Ø Straight (Flat key-way)					●									
	25.4mm Ø Straight						●								
	22mm Ø Straight							●							
	20mm Ø Steped tread		●						●	●	●	●	●		
	17mm Ø Steped tread														●
Flywheel brake			●	●						●					

Fuel hose, general purpose hoses and vinyl hose

- The standard part fuel hose, general purpose hose and vinyl hose may be substituted by the coiled bulk part.
- When ordering the standard part fuel hose, general purpose hose and vinyl hose use the bulk part number written in the parts catalog in brackets () underneath the part name.
- When exchanging the hose, cut and use at the specified length as mentioned in the part name.
(For the method of cutting the bulk part, and method of filling out orders etc., please refer to the instructions issued with the bulk part.)

Bulk part number of fuel hose, general purpose hose and vinyl hose.

Example: 9 5 0 0 1 - 7 5 0 0 1 - 5 0 M

Bulk part number:

Refers to the bulk part.

Marking code (fuel hose and general purpose hose)

Change code (Vinyl hose)

Indicates number mark or change sequence, however, the code for the bulk part must be strictly 0 (zero).

Types of code:

- | | | | | | |
|-------------|--|----------------|--|--------------|---|
| • Fuel hose | 2: Red outside braid
(3 mm inside dia. only) | • General hose | 1: Ash gray
2: Ash gray
3: Black
5: Black | • Vinyl hose | 1: Clear
2: Black
3: Light red
6: Light red
7: Pale black |
| | 5: Black inside braid | | | | |
| | 3: Red (3 mm inside dia. only) | | | | |
| | 4: Ash gray with red stripe
(3 mm inside dia. only) | | | | |
| | 6: Black | | | | |

Lengths:

- 001: 1 m (standard)
003: 3 m
008: 8 m } Application or specification of some parts is not settled.

I.D code: (fuel hose and general purpose hose)

- | | | | | |
|------------|--------------------|--------------------|-----------------------------|-----------------------------|
| 30: 3.0 mm | 50: 5.0 mm | 70: 7.0 mm | 11: 11 mm | 12: 12 (outside dia. 17) mm |
| 35: 3.5 mm | 55: 5.3 mm, 5.5 mm | 75: 7.3 mm, 7.5 mm | 91: 12 (outside dia. 15) mm | 14: 14 mm |
| 45: 4.5 mm | 65: 6.5 mm | 80: 8.0 mm | 92: 12 (outside dia. 16) mm | 17: 17 mm |

ID./OD. code: (vinyl hose)

- | | | | | |
|-------------------------|--------------------------|---------------------------|---------------------------|---------------------------|
| 01: ID. 2.9, OD. 6.8 mm | 12: ID. 5.0, OD. 7.0 mm | 21: ID. 8.0, OD. 9.0 mm | 37: ID. 11.0, OD. 15.0 mm | 50: ID. 16.0, OD. 19.0 mm |
| 03: ID. 3.0, OD. 6.0 mm | 10: ID. 5.0, OD. 8.0 mm | 23: ID. 8.0, OD. 12.0 mm | 38: ID. 12.0, OD. 13.0 mm | 55: ID. 17.5, OD. 20.5 mm |
| 05: ID. 3.5, OD. 6.5 mm | 11: ID. 5.0, OD. 9.0 mm | 25: ID. 9.0, OD. 11.0 mm | 39: ID. 12.0, OD. 14.0 mm | 60: ID. 22.0, OD. 27.0 mm |
| 07: ID. 4.0, OD. 7.0 mm | 14: ID. 6.0, OD. 9.0 mm | 27: ID. 9.0, OD. 13.0 mm | 40: ID. 12.0, OD. 16.0 mm | |
| 08: ID. 4.5, OD. 6.5 mm | 17: ID. 7.0, OD. 9.0 mm | 33: ID. 10.0, OD. 14.0 mm | 43: ID. 13.0, OD. 15.0 mm | |
| 09: ID. 4.5, OD. 8.0 mm | 19: ID. 7.0, OD. 11.0 mm | 36: ID. 11.0, OD. 13.0 mm | 45: ID. 14.0, OD. 18.0 mm | |

Hose type:

- 1: Fuel hose
3: Vinyl hose
5: General hose

⊙ **CAUTION: It is DANGEROUS to confuse the fuel hose with the general purpose hose or vinyl hose.**

Never use a general purpose hose or vinyl hose in place of a fuel hose or vice versa. Always use the correct bulk part in the parts catalogue, according to the service manual or the instructions issued with the bulk part.

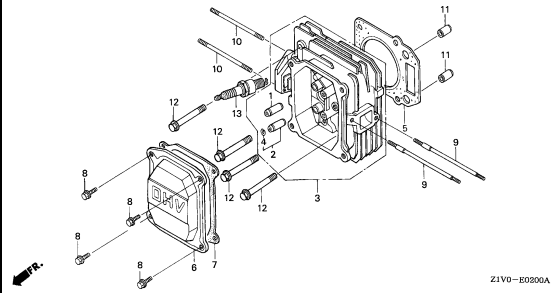
ENGINE GROUP

B 9

E-2

CYLINDER HEAD

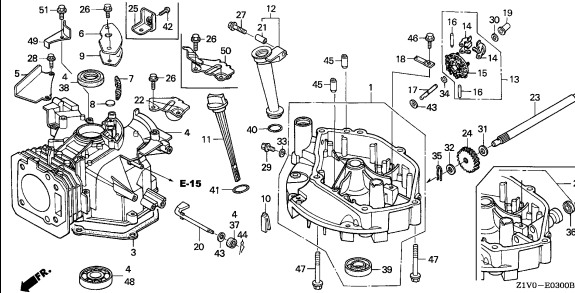
C 1



E-3

CYLINDER BARREL

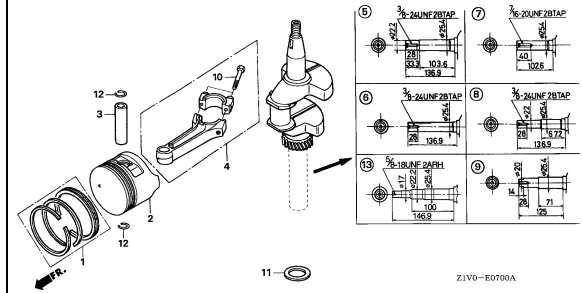
C 2



E-7

CRANKSHAFT/PISTON

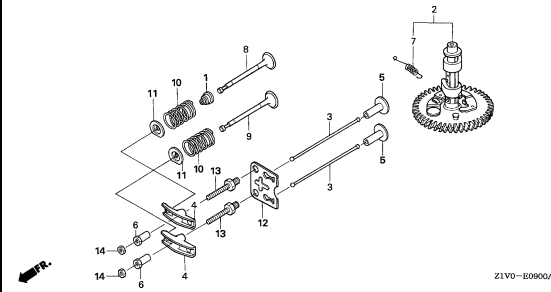
C 4



E-9

CAMSHAFT

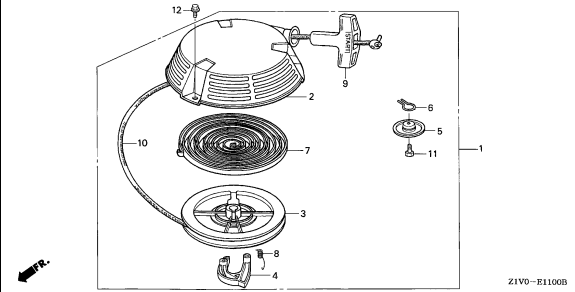
C 6



E-11

RECOIL STARTER

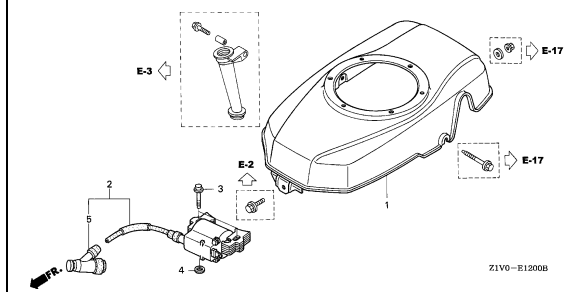
C 7



E-12

FAN COVER

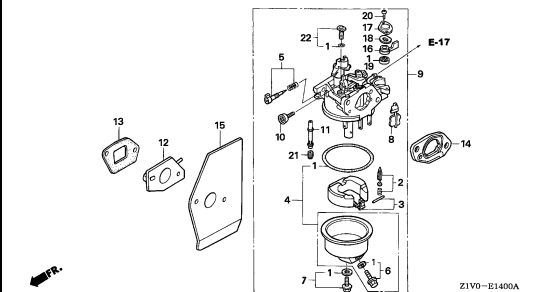
C 8



E-14

CARBURETOR

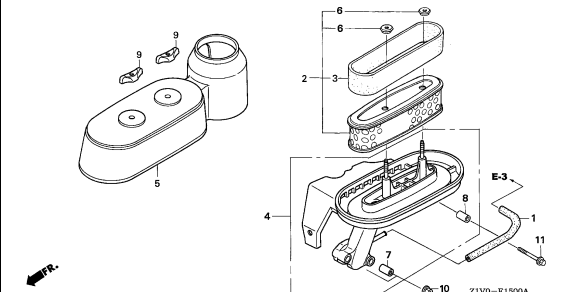
C 9



E-15

AIR CLEANER

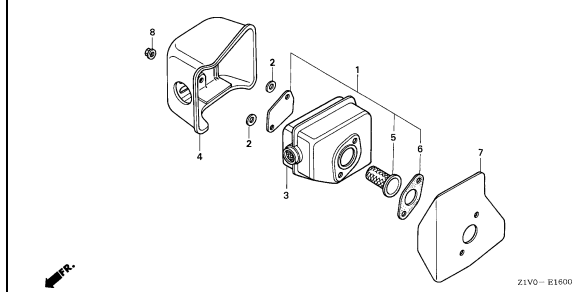
C10



E-16

MUFFLER

C11



2

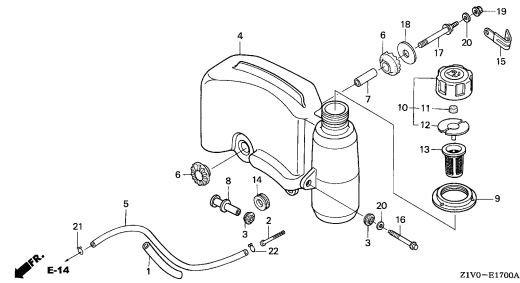
ENGINE GROUP

B10

E-17

FUEL TANK

C12

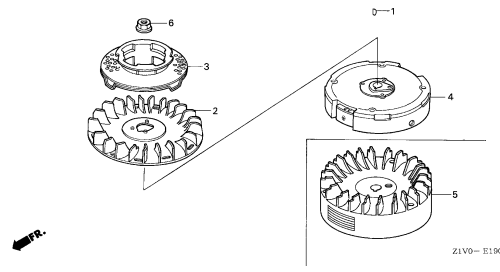


Z1V0-E1700A

E-19

FLYWHEEL(1)

C13

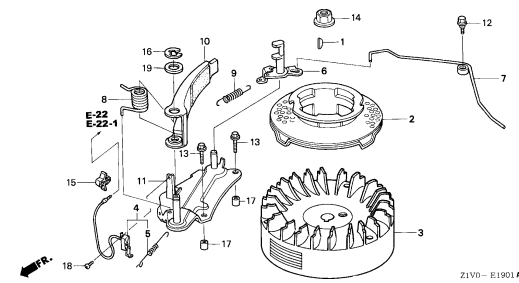


Z1V0-E1900

E-19-1

FLYWHEEL(2)

C14

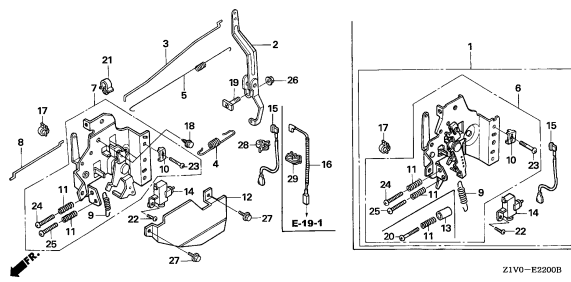


Z1V0-E1901A

E-22

CONTROL(1)

C15

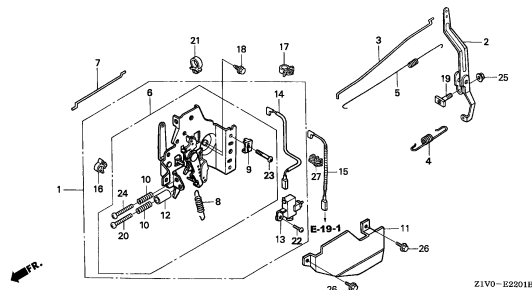


Z1V0-E2200B

E-22-1

CONTROL(2)

D 1

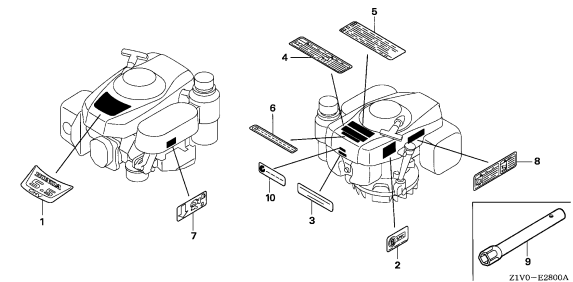


Z1V0-E2201B

E-28

LABEL/TOOL

D 3

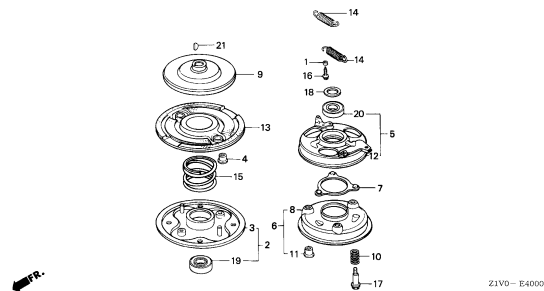


Z1V0-E2800A

E-40

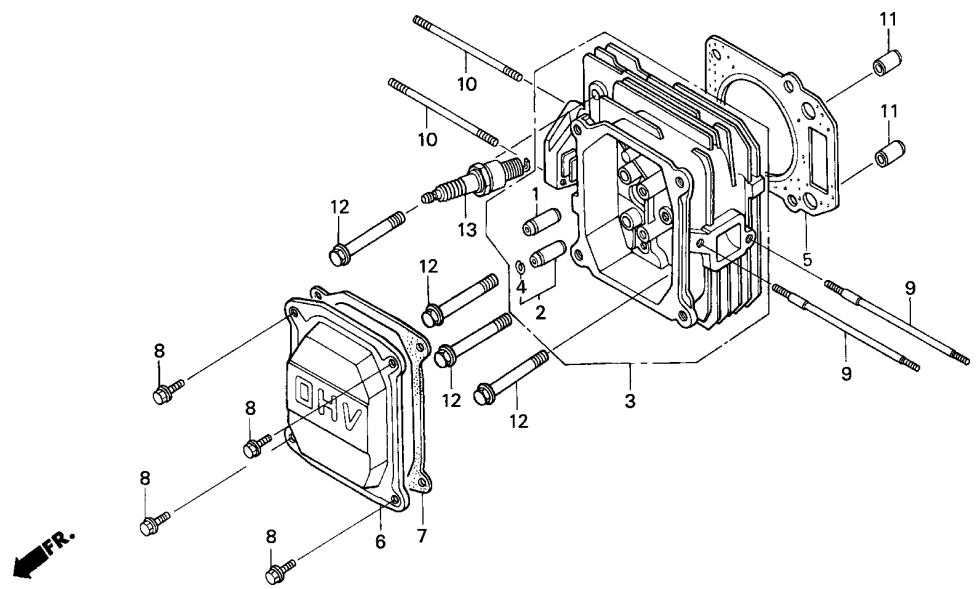
OTHER PARTS

D 4



Z1V0-E4000

2

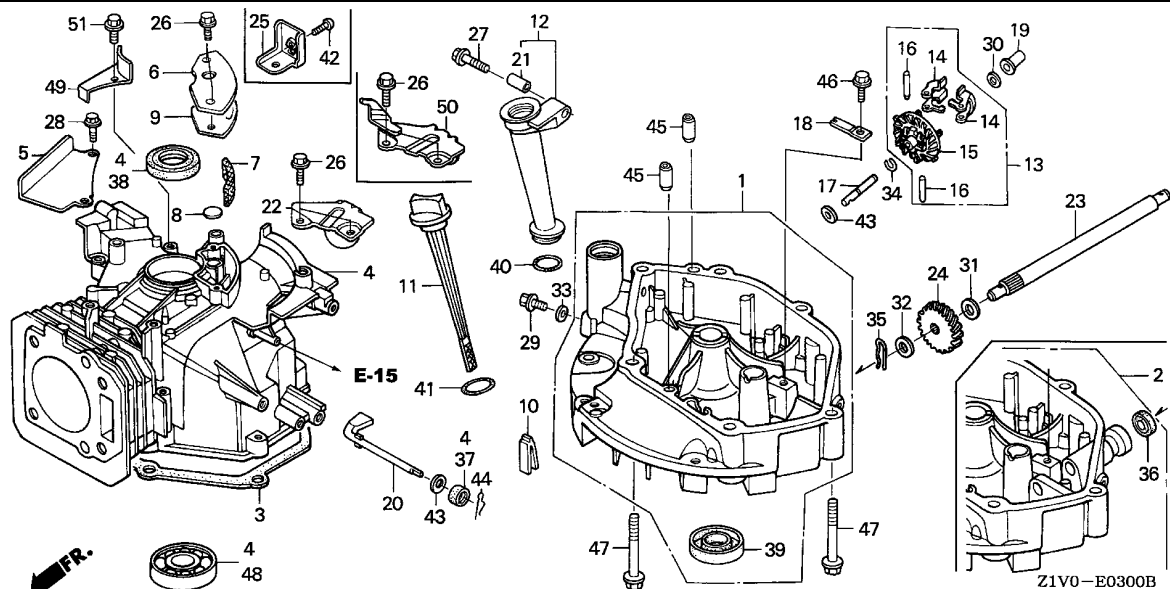


Z1V0-E0200A

Service item F.R.T.

Ref. No.	Part No.	Description	Reqd. QTY		Serial No.	Parts catalogue code
			GXV 160 H2			
1	12204-ZE1-306	GUIDE, IN. VALVE (O.S.)	1			
2	12205-ZE1-315	GUIDE, EX. VALVE (O.S.)	1			
3	12210-Z1V-000	HEAD COMP., CYLINDER	1			
4	12216-ZE5-300	CLIP, VALVE GUIDE	1			
5	12251-ZE7-000	GASKET, CYLINDER HEAD	1			
6	12311-ZG9-800	COVER, HEAD	1			
7	12391-ZE7-M10	PACKING, HEAD COVER	1			
8	90013-883-000	BOLT, FLANGE, 6X12(CT200)	4			
9	90043-ZE6-000	BOLT, STUD, 6X109	2			
10	90048-ZC3-000	BOLT, STUD, 6X85	2			
11	94301-10160	DOWEL PIN, 10X16	2			
12	95701-08050-00	BOLT, FLANGE, 8X50	4			
13	98079-54846	PLUG, SPARK (BPR4ES)(NGK)	(1)			
	98079-54855	PLUG, SPARK (W14EPR-U)(DENSO)	(1)			
	98079-55846	PLUG, SPARK (BPR5ES)(NGK)	1			
	98079-55855	PLUG, SPARK (W16EPR-U)(DENSO)	1			
	98079-56846	PLUG, SPARK (BPR6ES)(NGK)	(1)			
	98079-56855	PLUG, SPARK (W20EPR-U)(DENSO)	(1)			

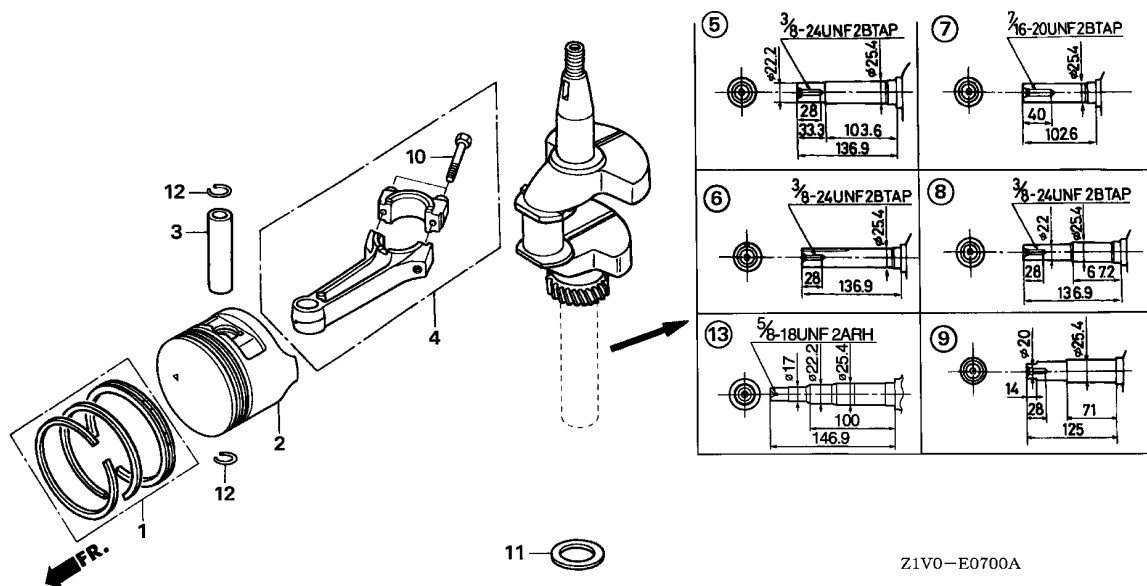




Service item F.R.T.

Ref. No.	Part No.	Description	Reqd. QTY		Serial No.	Parts catalogue code
			GXV 160 H2			
1	11300-Z1V-000	PAN ASSY., OIL	1		A14,C12,N1,N1F,N4,N5,N6,T1AH	
2	11300-Z1V-800	PAN ASSY., OIL	1		N6S,SFC,SFL,SFL1,SFY1	
3	11381-ZE7-M10	PACKING, OIL PAN	1			
4	12000-Z1V-000	BARREL ASSY., CYLINDER	1			
5	12125-Z1V-000	PLATE, GUIDE	1		N1,N1F,N4,N5,N6,N6S,SFL,SFL1,SFY1,T1AH	
6	12355-Z1V-000	COVER COMP., BREATHER	1			
7	12367-883-003	FILTER, BREATHER	1			
8	12372-ZE7-000	VALVE, BREATHER	1			
9	12373-ZE7-000	PACKING, BREATHER COVER	1			
10	15335-ZE7-000	RUBBER, OIL RETURN	1			
11	15620-ZE6-810	GAUGE COMP., OIL LEVEL	1			
12	15630-ZE6-810	EXTENSION, OIL FILLER	1			
13	16510-ZE6-000	GOVERNOR ASSY.	1			
14	16511-ZE1-000	WEIGHT, GOVERNOR	2			
15	16512-ZE6-000	HOLDER, GOVERNOR WEIGHT	1			
16	16513-ZE1-000	PIN, GOVERNOR WEIGHT	2			
17	16515-ZE6-010	SHAFT, GOVERNOR HOLDER	1			
18	16525-ZE6-010	PLATE, GOVERNOR SHAFT HOLDER	1			
19	16531-Z1T-000	SLIDER, GOVERNOR	1			
20	16541-ZE7-000	SHAFT, GOVERNOR ARM	1			
21	17240-ZE6-000	COLLAR, EXTENSION	1			
22	17517-ZE7-000	STAY COMP., TANK	1		A14,C12,N1,N1F,N4,N5,N6,N6S,SFC,SFL,SFL1,SFY1	
23	23411-ZE7-000	SHAFT, DRIVE	1		N6S,SFC,SFL,SFL1,SFY1	
24	23421-ZE6-000	GEAR, DRIVEN (18T)	1		N6S,SFC,SFL,SFL1,SFY1	
25	43143-Z1V-000	BASE COMP., HOLDER	1		A14,C12,SFC	

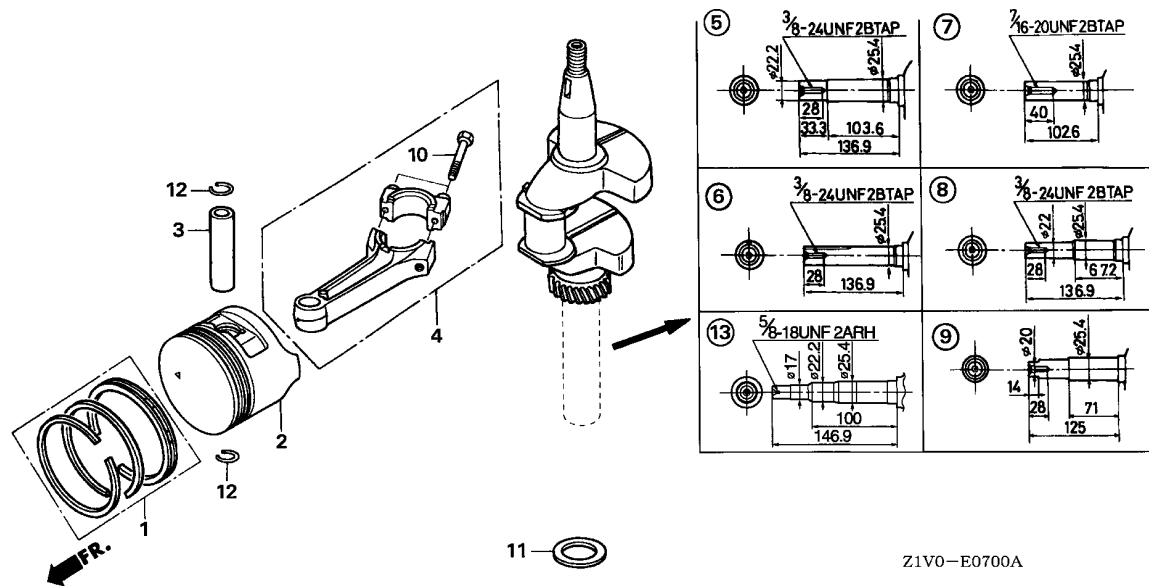
Ref. No.	Part No.	Description	Reqd. QTY		Serial No.	Parts catalogue code
			GXV 160 H2			
26	90014-952-000	BOLT, FLANGE, 6X14(CT200) ...	4			
27	90017-883-000	BOLT, FLANGE, 6X32	1			
28	90022-888-010	BOLT, FLANGE, 6X20(CT200) ...	2	-----	N1,N1F,N4,N5,N6,N6S,SFL,SFL1,SFY1,T1AH	
29	90131-ZE1-000	BOLT, DRAIN PLUG	1			
30	90451-ZE1-000	WASHER, THRUST, 6MM	1			
31	90452-166-600	WASHER, THRUST, 12MM	1	-----	N6S,SFC,SFL,SFL1,SFY1	
32	90452-187-000	WASHER, 10X21	1	-----	N6S,SFC,SFL,SFL1,SFY1	
33	90601-ZE1-000	WASHER, DRAIN PLUG, 10.2MM ..	1			
34	90602-ZE1-000	CLIP, GOVERNOR HOLDER	1			
35	90701-ZE6-000	PIN, LOCK, 2.0	1	-----	N6S,SFC,SFL,SFL1,SFY1	
36	91205-Z1V-003	OIL SEAL, 12X20X6.5	1	-----	N6S,SFC,SFL,SFL1,SFY1	
37	91231-Z1V-003	OIL SEAL, 6X11X4	1			
38	91251-Z1V-003	OIL SEAL, 25X38X7	1			
39	91252-Z1V-003	OIL SEAL, 25.4X40X7	1			
40	91301-Z1V-003	O-RING, 22.1X2.2	1			
41	91302-Z1V-003	O-RING, 25.5X3	1			
42	93500-05016-0A	SCREW, PAN, 5X16	1	-----	A14,C12,SFC	
43	94101-06800	WASHER, PLAIN, 6MM	2			
44	94251-08000	PIN, LOCK, 8MM	1			
45	94301-08140	DOWEL PIN, 8X14	2			
46	95701-06012-08	BOLT, FLANGE, 6X12	1			
47	95701-08050-00	BOLT, FLANGE, 8X50	6			
48	96100-62050-00	BEARING, RADIAL BALL, 6205 ..	1			
49	12126-Z1V-000	PLATE A, GUIDE	1	-----	T1AH	
50	17560-Z1V-000	STAY COMP., TANK	1	-----	T1AH	
51	90013-883-000	BOLT, FLANGE, 6X12(CT200) ...	1	-----	T1AH	



Z1V0-E0700A

Service item	F.R.T.

Ref. No.	Part No.	Description	Reqd. QTY		Serial No.	Parts catalogue code
			GXV	H2		
1	13010-ZL0-003	RING SET, PISTON (STD.) (TEIKOKU)	1			
	13010-ZL0-004	RING SET, PISTON (STD.) (NIPPON)	1			
	13011-ZL0-003	RING SET, PISTON (0.25) (TEIKOKU)	(1)			
	13011-ZL0-004	RING SET, PISTON (0.25) (NIPPON)	(1)			
	13012-ZL0-003	RING SET, PISTON (0.50) (TEIKOKU)	(1)			
	13012-ZL0-004	RING SET, PISTON (0.50) (NIPPON)	(1)			
	13013-ZL0-003	RING SET, PISTON (0.75) (TEIKOKU)	(1)			
	13013-ZL0-004	RING SET, PISTON (0.75) (NIPPON)	(1)			
2	13101-ZH8-010	PISTON (STD.)	1			
	13101-Z1T-000	PISTON (STD.)	1			
	13102-ZE7-020	PISTON (0.25)	(1)			
	13103-ZE7-020	PISTON (0.50)	(1)			
	13104-ZE7-020	PISTON (0.75)	(1)			
3	13111-Z1T-000	PIN, PISTON	1			
4	13200-Z1V-000	ROD ASSY., CONNECTING	1			
5	13310-ZE7-010	CRANKSHAFT COMP.	1		----- A14,N1,N1F	
6	13310-ZE7-641	CRANKSHAFT COMP.	1		----- N4	
7	13310-ZE7-661	CRANKSHAFT COMP.	1		----- N5	
8	13310-ZE7-681	CRANKSHAFT COMP.	1		----- N6	
9	13310-ZE7-711	CRANKSHAFT COMP.	1		----- C12,N6S,SFC,SFL,SFL1,SFY1	

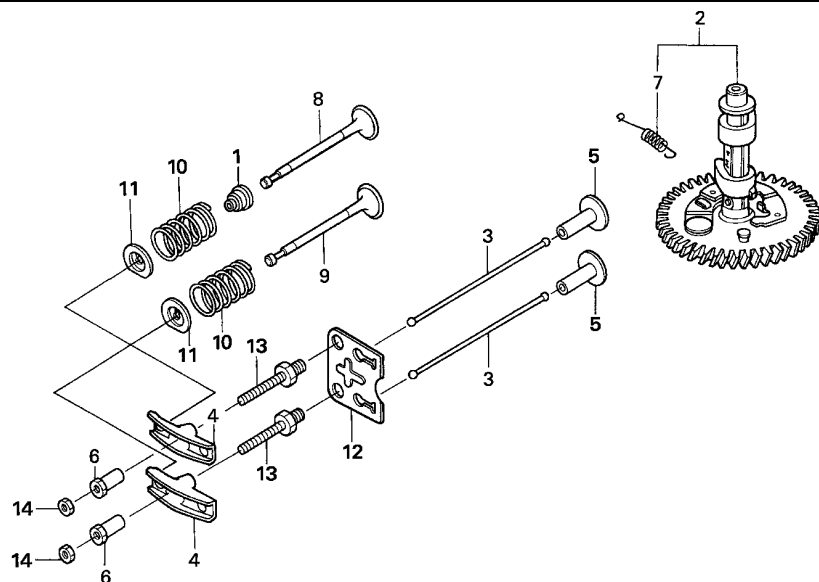


Ref. No.	Part No.	Description	Reqd. QTY		Serial No.	Parts catalogue code
			GXV	H2		
10	90001-ZE1-000	BOLT, CONNECTING ROD	2			
11	90401-ZE7-W00	WASHER, THRUST, 25.6MM	1			
12	90551-ZE1-000	CLIP, PISTON PIN, 18MM	2			
13	13310-ZE7-V20	CRANKSHAFT COMP.	1		----- T1AH	



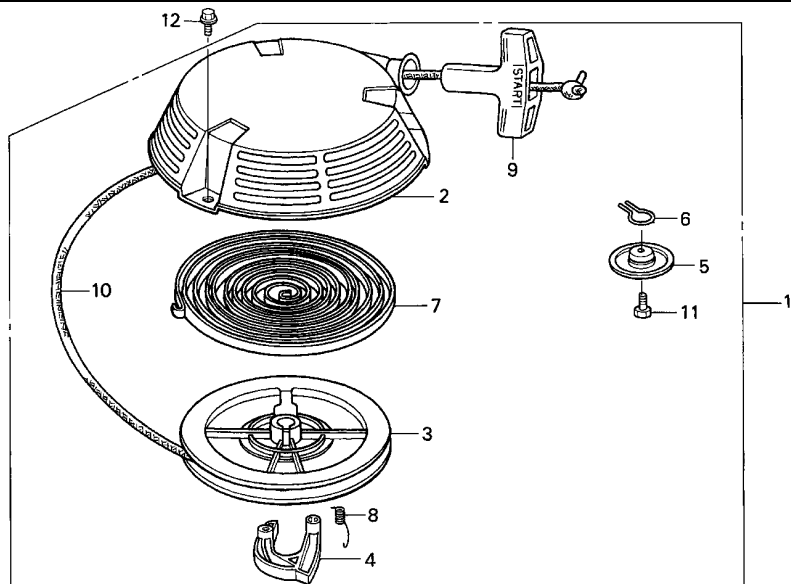
Service item

F.R.T.



Z1V0-E0900A

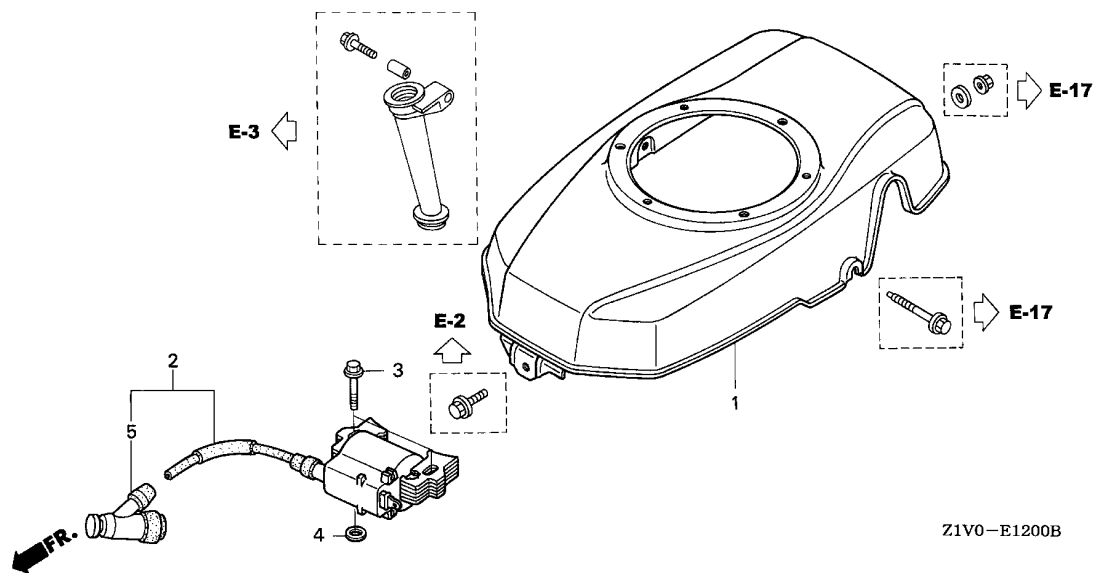
Ref. No.	Part No.	Description	Reqd. QTY		Serial No.	Parts catalogue code
			GXV 160 H2			
1	12209-ZE6-003	SEAL, VALVE STEM	1			
2	14100-ZE7-000	CAMSHAFT ASSY.	1		----- A14,C12,N1,N1F,N4,N5,N6,T1AH	
	14100-ZE7-770	1		----- N6S,SFC,SFL,SFL1,SFY1	
3	14410-ZE1-010	ROD, PUSH	2			
4	14431-ZE1-000	ARM, VALVE ROCKER	2			
5	14441-ZE1-010	LIFTER, VALVE	2			
6	14451-ZE1-013	PIVOT, ROCKER ARM	2			
7	14568-ZE1-000	SPRING, WEIGHT RETURN	1			
8	14711-ZF1-000	VALVE, IN.	1			
9	14721-ZE7-000	VALVE, EX.	1			
10	14751-ZE1-000	SPRING, VALVE	2			
11	14771-ZE1-000	RETAINER, IN. VALVE SPRING ..	2			
12	14791-ZE1-010	PLATE, PUSH ROD GUIDE	1			
13	90012-ZE0-010	BOLT, PIVOT, 8MM	2			
14	90206-ZE1-000	NUT, PIVOT ADJUSTING	2			



Service item F.R.T.

Ref. No.	Part No.	Description	Reqd. QTY		Serial No.	Parts catalogue code
			GXV	H2		
1	28400-ZE7-V11ZB	STARTER ASSY., RECOIL (LONG ROPE)				
		NH1.....BLACK	1	-----	N1F	
	28400-ZE7-V11ZC	*R280*.....POWER RED	1	-----	N1F	
	28400-ZE7-003ZB	STARTER ASSY., RECOIL				
		NH1.....BLACK	1	-----	A14,SFL1,T1AH	
	28400-ZE7-003ZC	*R280*.....POWER RED	1	-----	A14,C12,N1,N4,N5,N6,N6S,SFC,SFL,SFL1,SFY1	
2	28410-ZE7-003ZB	CASE COMP., RECOIL STARTER				
		NH1.....BLACK	1	-----	A14,N1F,SFL1,T1AH	
	28410-ZE7-003ZD	*R280*.....POWER RED	1	-----	A14,C12,N1,N1F,N4,N5,N6,N6S,SFC,SFL,SFL1,SFY1	
3	28420-ZE7-003	PULLEY, RECOIL STARTER	1	-----		
4	28422-896-010	RATCHET, STARTER	1	-----		
5	28431-896-000	PLATE, FRICTION	1	-----		
6	28441-896-000	SPRING, FRICTION	1	-----		
7	28442-896-700	SPRING, RECOIL STARTER	1	-----		
8	28443-896-000	SPRING, RETURN	1	-----		
9	28461-ZE1-003	KNOB, RECOIL STARTER	1	-----		
10	28462-ZA7-003	ROPE, RECOIL STARTER	1	-----	A14,C12,N1,N4,N5,N6,N6S,SFC,SFL,SFL1,SFY1,T1AH	
	28462-ZE7-V11	1	-----	N1F	
11	92101-06012-0H	BOLT, HEX., 6X12	1	-----		
12	95701-06008-00	BOLT, FLANGE, 6X8	3	-----		





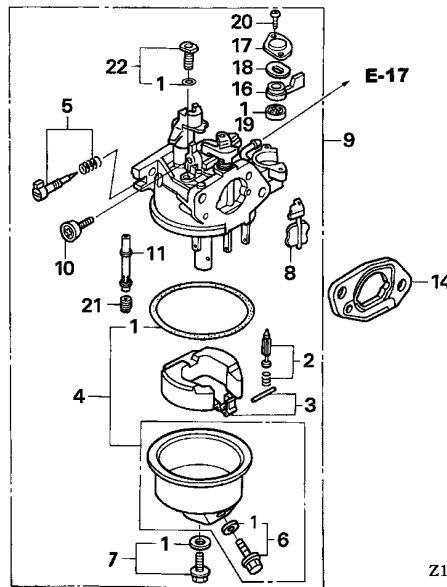
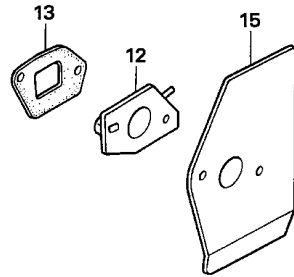
Service item F.R.T.

Ref. No.	Part No.	Description	Reqd. QTY		Serial No.	Parts catalogue code
			GXV	H2		
1	19610-Z1V-000ZA	COVER COMP., FAN	1			
		R280.....POWER RED	1		A14,C12,N1,N1F,N4,N5,N6,N6S,SFC,SFL,SFL1,SFY1	
	19610-Z1V-000ZB	*NH1*.....BLACK	1		A14,N1F,SFL1,T1AH	
2	30500-Z1V-003	COIL ASSY., IGNITION	1			
3	90015-883-000	BOLT, FLANGE, 6X28	2			
4	90581-Z1V-000	WASHER, PLAIN, 6MM	2			
5	30700-Z1V-003	CAP ASSY., NOISE SUPPRESSOR	1			

E-14

CARBURETOR

C 9



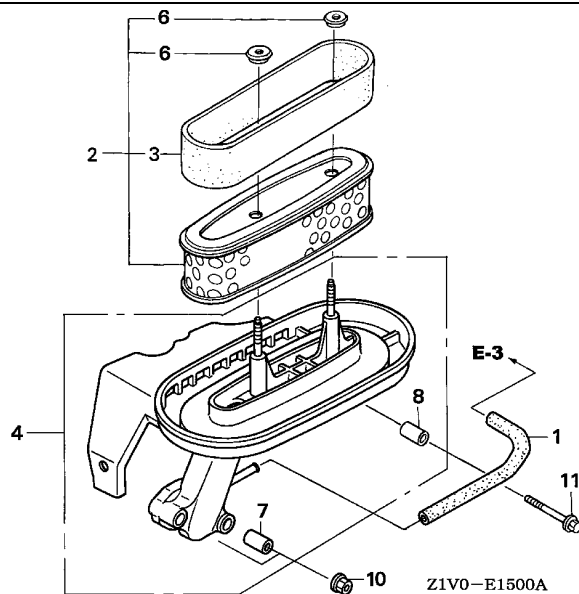
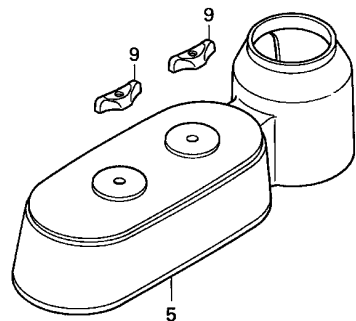
Z1V0-E1400A

Service item

F.R.T.

Ref. No.	Part No.	Description	Reqd. QTY		Serial No.	Parts catalogue code
			GXV 160 H2			
1	16010-ZE0-025	GASKET SET	1			
2	16011-ZE0-005	VALVE SET, FLOAT	1			
3	16013-ZE0-005	FLOAT SET	1			
4	16015-ZE0-831	CHAMBER SET, FLOAT	1			
5	16016-ZH7-W01	SCREW SET, PILOT	1			
6	16024-ZE1-811	SCREW SET, DRAIN	1			
7	16028-ZE0-005	SCREW SET	1			
8	16045-ZE7-005	CHOKE SET	1			
9	16100-Z1V-003	CARBURETOR ASSY. (BE66J A) ..	1			
10	16124-ZE0-005	SCREW, THROTTLE STOP	1			
11	16166-Z1V-003	NOZZLE, MAIN	1			
12	16211-ZE7-000	INSULATOR, CARBURETOR	1			
13	16212-ZE7-M10	PACKING, INSULATOR	1			
14	16220-ZE6-010	SPACER COMP., CARBURETOR	1			
15	16221-ZE7-M11	PACKING, CARBURETOR	1			
16	16953-ZE1-812	LEVER, COCK	1			
17	16954-ZE1-812	PLATE, LEVER SETTING	1			
18	16956-ZE1-811	SPRING, COCK LEVER	1			
19	16957-ZE1-812	PACKING, FUEL COCK	1			
20	93500-03006-1H	SCREW, PAN, 3X6	2			
21	99101-ZH8-0600	JET, MAIN, #60	(1)			
	99101-ZH8-0620	JET, MAIN, #62	(1)			
	99101-ZH8-0650	JET, MAIN, #65	1			
22	99204-ZE0-0350	JET SET, PILOT, #35	1			

2



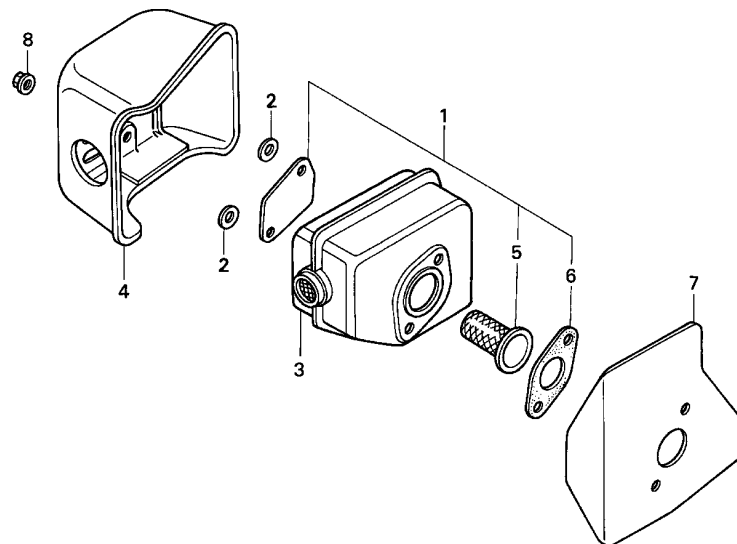
Service item

F.R.T.

FR.

2

Ref. No.	Part No.	Description	Reqd. QTY		Serial No.	Parts catalogue code
			GXV	H2		
1	15721-ZE7-000	TUBE, BREATHER	1			
2	17210-Z1V-003	ELEMENT, AIR CLEANER	1			
3	17218-888-003	FILTER, OUTER	1			
4	17220-Z1V-000	CASE COMP., AIR CLEANER	1			
5	17231-Z1V-000	COVER, AIR CLEANER	1			
6	17232-891-000	GROMMET, AIR CLEANER	2			
7	17238-ZE7-710	COLLAR, AIR CLEANER	2			
8	17239-ZE6-300	COLLAR B, AIR CLEANER	1			
9	90300-Z1V-000	NUT, AIR CLEANER	2			
10	94050-06000	NUT, FLANGE, 6MM	2			
11	95701-06035-00	BOLT, FLANGE, 6X35	1			

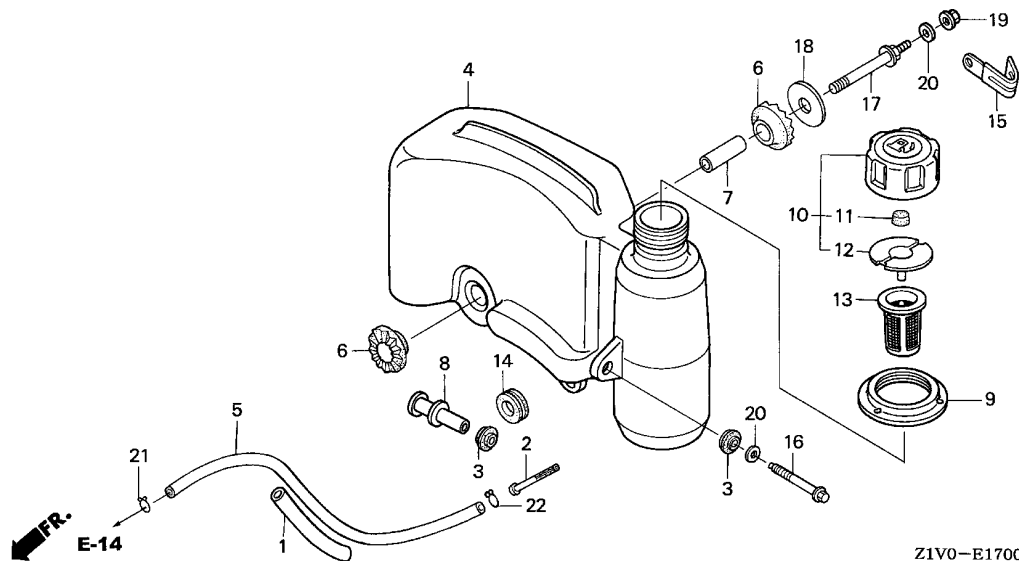


Z1V0- E1600

Service item F.R.T.

Ref. No.	Part No.	Description	Reqd. QTY		Serial No.	Parts catalogue code
			GXV	H2		
1	06180-ZE6-820	ARRESTER KIT, SPARK	(1)			
2	18292-ZE7-M10	PACKING, PROTECTOR	2		----- A14,C12,N1F,N4,SFC	
3	18310-Z1V-000	MUFFLER COMP.	1			
4	18320-Z1V-000	PROTECTOR COMP., MUFFLER	1			
5	18355-888-810	ARRESTER, SPARK	(1)			
6	18381-ZE6-820	GASKET, MUFFLER	(1)			
7	18381-Z1V-000	GASKET, MUFFLER	1			
8	90343-ZE6-000	NUT, SELF-LOCK, 6MM	2			





Z1V0-E1700A

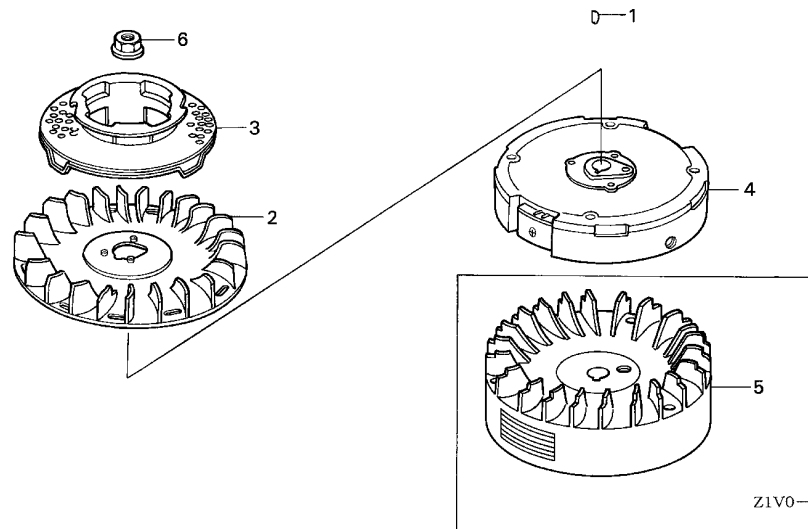
Service item

F.R.T.

Ref. No.	Part No.	Description	Reqd. QTY		Serial No.	Parts catalogue code
			GXV	H2		
1	16854-ZH8-000	RUBBER, SUPPORTER (107MM) ...	2			
2	16952-ZA8-800	STRAINER, FUEL	1			
3	17506-ZE7-000	RUBBER, TANK SETTING	2			
4	17510-Z1V-010	TANK COMP., FUEL	1			
5	17512-ZE7-000	TUBE, FUEL	1			
6	17516-896-700	RUBBER B, TANK MOUNTING	2			
7	17518-Z1V-000	COLLAR, TANK SET	1			
8	17519-Z1V-000	COLLAR COMP., TANK	1			
9	17532-Z1V-000	RUBBER, TANK MOUNTING	1			
10	17620-Z1V-000	CAP ASSY., FUEL TANK	1			
11	17622-888-010	SPONGE, FUEL CAP BREATHER ...	1			
12	17624-ZE7-000	PACKING, FUEL CAP	1			
13	17636-Z1V-010	GAUGE, FUEL LEVEL	1			
14	80103-MG2-000	CUSHION, RR. FENDER	1			
15	90010-GEO-710	CLIP, TUBE	1		----- C12,SFC	
16	90014-Z1V-000	BOLT, FLANGE, 6X47(CT200) ...	1			
17	90016-Z1V-000	BOLT, TANK STAY	1			
18	90455-896-700	WASHER, TANK MOUNTING	1			
19	94050-06000	NUT, FLANGE, 6MM	1			
20	94103-06000	WASHER, PLAIN, 6MM	2			
21	95002-02080	CLIP, TUBE (B8)	1			
22	95002-70000	CLIP, TUBE (C11)	1			

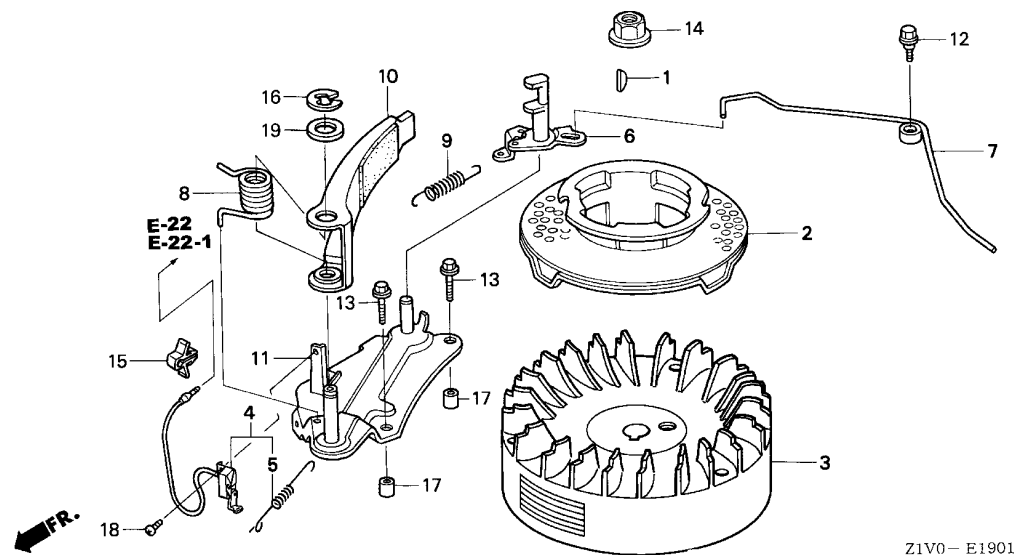
Service item

F.R.T.



Ref. No.	Part No.	Description	Reqd. QTY		Serial No.	Parts catalogue code
			GXV	H2		
1	13331-357-000	KEY, SPECIAL WOODRUFF, 25X18	1		-----	N1,N1F,N4,N5,N6,N6S,SFL,SFL1,SFY1,T1AH
2	19511-Z1T-000	FAN, COOLING	1		-----	N1F,N6S,SFL,SFL1,SFY1
3	28451-ZE7-003	PULLEY COMP., STARTER	1		-----	N1,N1F,N4,N5,N6,N6S,SFL,SFL1,SFY1,T1AH
4	31110-Z1V-003	FLYWHEEL COMP.	1		-----	N1F,N6S,SFL,SFL1,SFY1
5	31110-Z1V-810	FLYWHEEL COMP. (BRAKE)	1		-----	N1,N4,N5,N6,T1AH
6	90201-Z1T-000	NUT, SPECIAL, 14MM	1		-----	N1,N1F,N4,N5,N6,N6S,SFL,SFL1,SFY1,T1AH



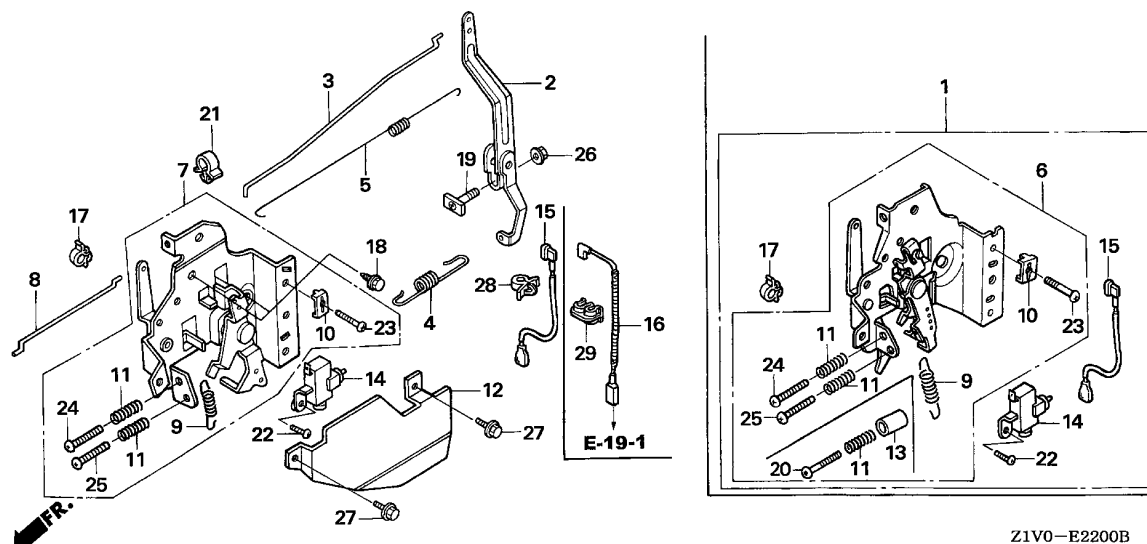


Z1V0-E1901A

Service item

F.R.T.

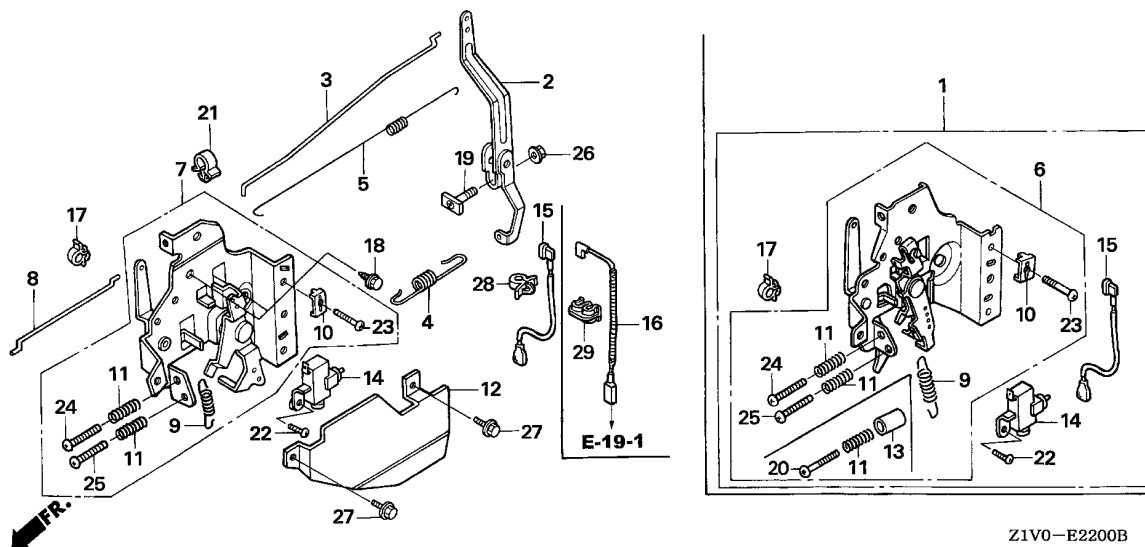
Ref. No.	Part No.	Description	Reqd. QTY		Serial No.	Parts catalogue code
			GXV	H2		
1	13331-357-000	KEY, SPECIAL WOODRUFF, 25X18	1	-----	-----	A14,C12,SFC
2	28451-ZE7-003	PULLEY COMP., STARTER	1	-----	-----	A14,C12,SFC
3	31110-Z1V-810	FLYWHEEL COMP. (BRAKE)	1	-----	-----	A14,C12,SFC
4	35120-Z1V-811	SWITCH ASSY., ENGINE STOP (BRAKE)	1	-----	-----	A14,C12,SFC
5	36121-ZE6-000	SPRING, SWITCH CONTROL	1	-----	-----	A14,C12,SFC
6	43140-ZE7-000	CAM COMP., BRAKE	1	-----	-----	A14,C12,SFC
7	43145-ZE7-003	ROD, THROTTLE RETURN	1	-----	-----	A14,C12,SFC
8	75112-ZE6-000	SPRING, BRAKE	1	-----	-----	A14,C12,SFC
9	75113-ZE6-000	SPRING, BRAKE RETURN	1	-----	-----	A14,C12,SFC
10	75120-ZE6-013	BRAKE COMP.	1	-----	-----	A14,C12,SFC
11	75130-ZE7-000	BASE COMP., BRAKE	1	-----	-----	A14,C12,SFC
12	90015-ZE6-000	BOLT, FLANGE, 6MM	1	-----	-----	A14,C12,SFC
13	90018-ZE1-000	BOLT, FLANGE, 6X23(CT200)	2	-----	-----	A14,C12,SFC
14	90201-Z1T-000	NUT, SPECIAL, 14MM	1	-----	-----	A14,C12,SFC
15	30701-883-000	CLIP, HIGH TENSION CORD (8MM)	1	-----	-----	A14,C12,SFC
16	90653-723-000	E-RING, 10MM	1	-----	-----	A14,C12,SFC
17	90702-ZE6-000	DOWEL PIN, 8X9	2	-----	-----	A14,C12,SFC
18	93500-04008-0A	SCREW, PAN, 4X8	1	-----	-----	A14,C12,SFC
19	94102-12800	WASHER, PLAIN, 12MM	1	-----	-----	A14,C12,SFC



Service item F.R.T.

Ref. No.	Part No.	Description	Reqd. QTY	Serial No.	Parts catalogue code
			GXV 160 H2		
1	16500-ZE7-W31	CONTROL ASSY.	1	-----	SFL,SFL1,SFY1
2	16551-ZE7-000	ARM, GOVERNOR	1	-----	C12,N1,N4,N5,N6,N6S,SFC,SFL,SFL1,SFY1,T1AH
3	16555-ZE7-000	ROD, GOVERNOR	1	-----	C12,N1,N4,N5,N6,N6S,SFC,SFL,SFL1,SFY1,T1AH
4	16561-ZE7-020	SPRING, GOVERNOR	1	-----	C12,N1,N4,N5,N6,N6S,SFC,SFL,SFL1,SFY1,T1AH
5	16562-ZE6-000	SPRING, THROTTLE RETURN	1	-----	C12,N1,N4,N5,N6,N6S,SFC,SFL,SFL1,SFY1,T1AH
6	16570-ZE7-W10 16570-ZE7-772	CONTROL COMP.	1	-----	SFC,SFL,SFL1,SFY1 N6,N6S
7	16570-ZE7-020	CONTROL ASSY.	1	-----	C12,N1,N4,N5,T1AH
8	16573-ZE7-000	ROD, CHOKE	1	-----	C12,N1,N4,N5,N6,N6S,SFC,SFL,SFL1,SFY1,T1AH
9	16576-ZE7-300	SPRING, LEVER	1	-----	C12,N1,N4,N5,N6,N6S,SFC,SFL,SFL1,SFY1,T1AH
10	16576-891-000	HOLDER, CABLE	1	-----	C12,N1,N4,N5,N6,N6S,SFC,SFL,SFL1,SFY1,T1AH
11	16584-883-300	SPRING, CONTROL ADJUSTING ...	2	-----	C12,N1,N4,N5,N6,N6S,SFC,SFL,SFL1,SFY1,T1AH
12	16585-ZE7-000	PROTECTOR, CONTROL	1	-----	C12,N1,N4,N5,N6,N6S,SFC,SFL,SFL1,SFY1,T1AH
13	16599-ZG1-M10	COLLAR, STOPPER	1	-----	SFC,SFL,SFL1,SFY1
14	36100-ZE7-013	SWITCH ASSY., ENGINE STOP ...	1	-----	N1,N4,N5,N6,N6S,SFL,SFL1,SFY1,T1AH
15	36101-ZE7-020	CORD, STOP SWITCH	1	-----	N1,N4,N5,N6,N6S,SFL,SFL1,SFY1,T1AH
16	32195-Z1V-810	CORD, STOP SWITCH (BRAKE) ...	1	-----	C12,SFC
17	36103-ZE1-000	HOLDER, STOP SWITCH CORD ...	1	-----	N1,N4,N5,N6,SFL,SFL1,SFY1,T1AH
18	90013-883-000	BOLT, FLANGE, 6X12(CT200) ...	2	-----	C12,N1,N4,N5,N6,N6S,SFC,SFL,SFL1,SFY1,T1AH
19	90015-ZE5-010	BOLT, GOVERNOR ARM	1	-----	C12,N1,N4,N5,N6,N6S,SFC,SFL,SFL1,SFY1,T1AH
20	90016-ZE7-W00	SCREW, RECESSED, 5X28	1	-----	SFC,SFL,SFL1,SFY1
21	90659-680-013	CLIP, WIRE HARNESS	1	-----	N1,N4,N5,N6,N6S,SFL,SFL1,SFY1,T1AH
22	93500-04008-0A	SCREW, PAN, 4X8	1	-----	N1,N4,N5,N6,N6S,SFL,SFL1,SFY1,T1AH
23	93500-05016-0A	SCREW, PAN, 5X16	1	-----	C12,N1,N4,N5,N6,N6S,SFC,SFL,SFL1,SFY1,T1AH
24	93500-05020-0A	SCREW, PAN, 5X20	1	-----	C12,N1,N4,N5,N6,N6S,SFC,SFL,SFL1,SFY1,T1AH





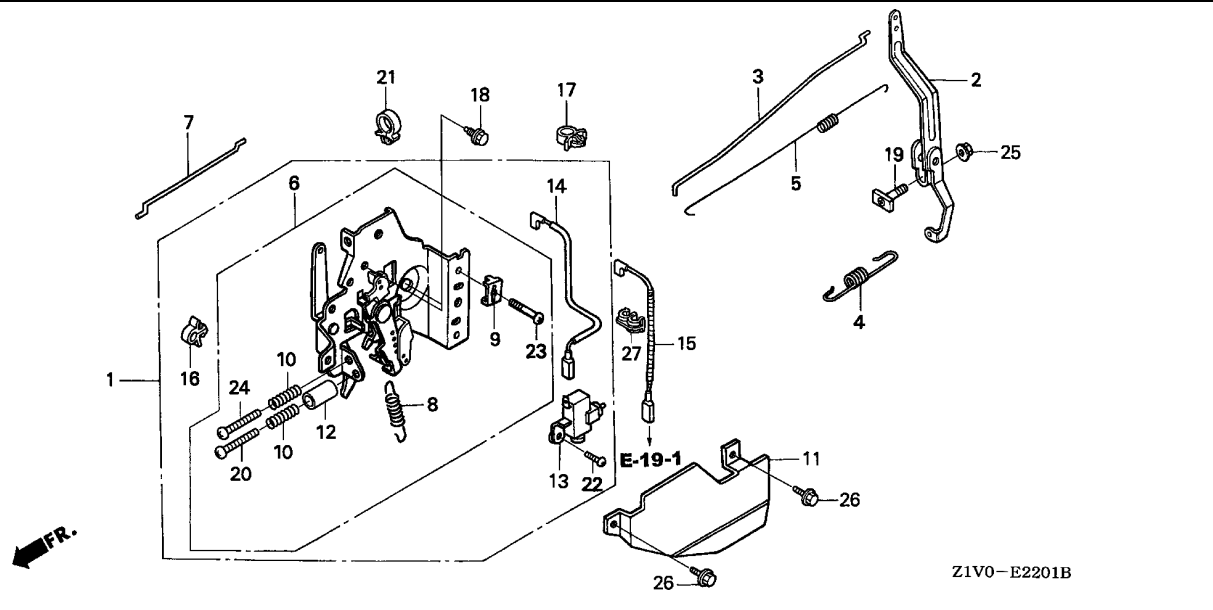
Z1V0-E2200B

Ref. No.	Part No.	Description	Reqd. QTY		Serial No.	Parts catalogue code
			GXV 160 H2			
25	93500-05028-0A	SCREW, PAN, 5X28	1		-----	C12,N1,N4,N5,N6,N6S,T1AH
26	94050-06000	NUT, FLANGE, 6MM	1		-----	C12,N1,N4,N5,N6,N6S,SFC,SFL,SFL1,SFY1,T1AH
27	95701-06010-00	BOLT, FLANGE, 6X10	2		-----	C12,N1,N4,N5,N6,N6S,SFC,SFL,SFL1,SFY1,T1AH
28	46392-SC2-003	CLAMP, BRAKE PIPE (GRAY)	1		-----	N1,N4,N5,N6,N6S,SFL,SFL1,SFY1,T1AH
29	90505-MCT-000	CLAMP, PIPE	1		-----	C12,SFC

E-22-1

CONTROL(2)

D 1

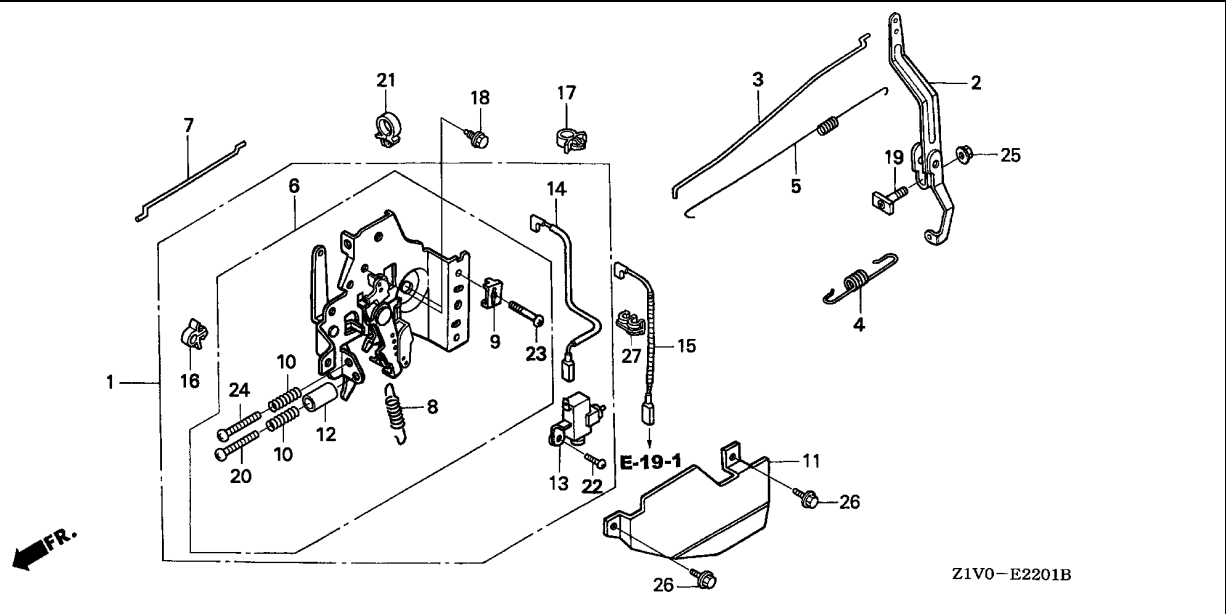


Service item F.R.T.

Z1V0-E2201B

Ref. No.	Part No.	Description	Reqd. QTY		Serial No.	Parts catalogue code
			GXV 160 H2			
1	16500-ZE7-W11	CONTROL ASSY. (EN) (STD.)	1	-----	-----	N1F
2	16551-ZE7-000	ARM, GOVERNOR	1	-----	-----	A14,N1F
3	16555-ZE7-000	ROD, GOVERNOR	1	-----	-----	A14,N1F
4	16561-ZE7-020	SPRING, GOVERNOR	1	-----	-----	A14,N1F
5	16562-ZE6-000	SPRING, THROTTLE RETURN	1	-----	-----	A14,N1F
6	16570-ZE7-W00	CONTROL COMP. (STD.)	1	-----	-----	A14,N1F
7	16573-ZE7-000	ROD, CHOKE	1	-----	-----	A14,N1F
8	16576-ZE7-300	SPRING, LEVER	1	-----	-----	A14,N1F
9	16576-891-000	HOLDER, CABLE	1	-----	-----	A14,N1F
10	16584-883-300	SPRING, CONTROL ADJUSTING	2	-----	-----	A14,N1F
11	16585-ZE7-000	PROTECTOR, CONTROL	1	-----	-----	A14,N1F
12	16599-ZG1-M10	COLLAR, STOPPER	1	-----	-----	A14,N1F
13	36100-ZE7-013	SWITCH ASSY., ENGINE STOP	1	-----	-----	N1F
14	36101-ZE7-020	CORD, STOP SWITCH	1	-----	-----	N1F
15	32195-Z1V-810	CORD, STOP SWITCH (BRAKE)	1	-----	-----	A14
16	36103-ZE1-000	HOLDER, STOP SWITCH CORD	1	-----	-----	N1F
17	46392-SC2-003	CLAMP, BRAKE PIPE (GRAY)	1	-----	-----	N1F
18	90013-883-000	BOLT, FLANGE, 6X12(CT200)	2	-----	-----	A14,N1F
19	90015-ZE5-010	BOLT, GOVERNOR ARM	1	-----	-----	A14,N1F
20	90016-ZE7-W00	SCREW, RECESSED, 5X28	1	-----	-----	A14,N1F
21	90659-680-013	CLIP, WIRE HARNESS	1	-----	-----	A14,N1F
22	93500-04008-0A	SCREW, PAN, 4X8	1	-----	-----	N1F
23	93500-05016-0A	SCREW, PAN, 5X16	1	-----	-----	A14,N1F
24	93500-05020-0A	SCREW, PAN, 5X20	1	-----	-----	A14,N1F
25	94050-06000	NUT, FLANGE, 6MM	1	-----	-----	A14,N1F

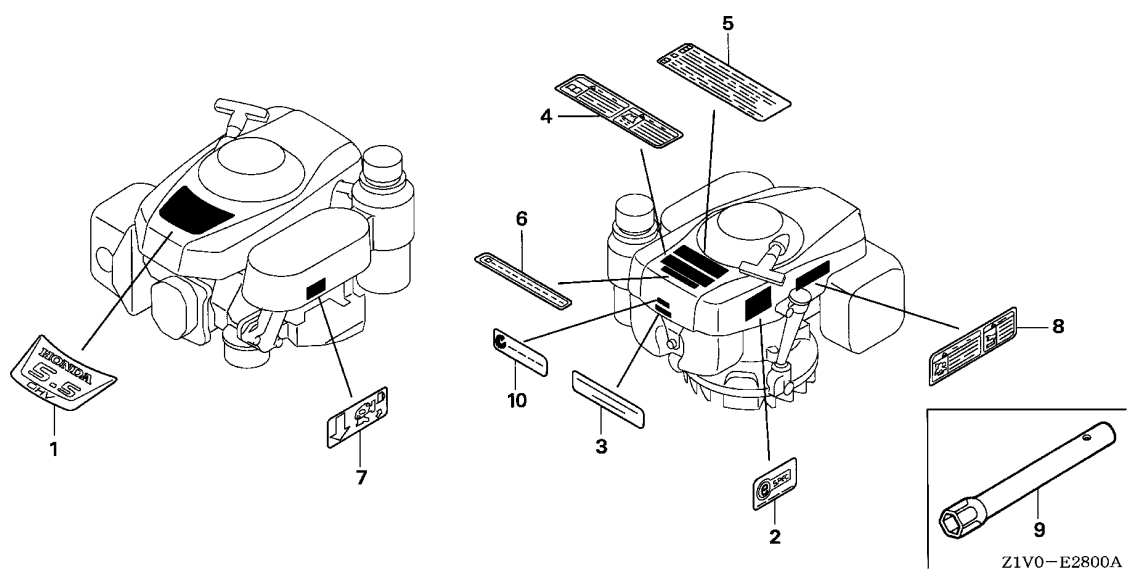
2



Z1V0-E2201B

2

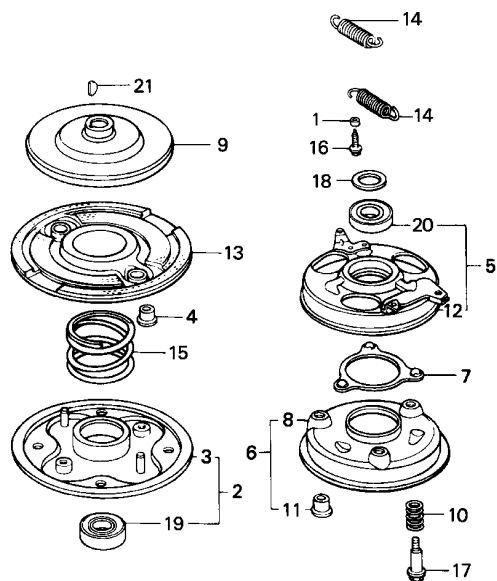
Ref. No.	Part No.	Description	Reqd. QTY		Serial No.	Parts catalogue code
			GXV 160 H2			
26	95701-06010-00	BOLT, FLANGE, 6X10	2	-----	-----	A14,N1F
27	90505-MCT-000	CLAMP, PIPE	1	-----	-----	A14



Service item	F.R.T.

Ref. No.	Part No.	Description	Reqd. QTY		Serial No.	Parts catalogue code
			GXV	H2		
1	87101-Z1V-000	MARK, EMBLEM	1			
2	87135-ZE2-020	LABEL, E-SPEC (15.5X27.5) ...	1			
3	87504-Z1V-000	MARK, MANUFACTURER	1			
4	87520-Z1V-000	MARK A, COMBINATION (JAPANESE)	1		N6S,SFL,SFL1,SFY1	
5	87522-Z1V-000	LABEL, CAUTION	1		A14,C12,N1,N1F,N4,N5,N6,SFC,T1AH	
6	87522-Z1V-800	LABEL, CAUTION (CHINESE)	1		C12,N4,SFC	
7	87524-Z1V-000	MARK, FUEL COCK CAUTION	1			
8	87526-Z1V-000	MARK B, COMBINATION (JAPANESE)	1		N6S,SFL,SFL1,SFY1	
9	99004-21002	WRENCH, BOX (P21)	1		N6S,SFC,SFL,SFL1,SFY1	
	99004-21003	1		A14,C12,N1,N1F,N4,N5,N6,T1AH	
10	87637-ZM3-800	MARK (C-TICK)	1		T1AH	





Z1V0-E4000

Service item F.R.T.

Ref. No.	Part No.	Description	Reqd. QTY		Serial No.	Parts catalogue code
			GXV 160 H2			
1	19512-883-000	COLLAR, FAN	2	-----	-----	SFL1,SFY1
2	72600-VA4-010	HOLDER ASSY., BLADE	1	-----	-----	SFL1,SFY1
3	72610-VA4-000	HOLDER COMP., BLADE	1	-----	-----	SFL1,SFY1
4	72613-VA4-000	BUSH, BLADE HOLDER	2	-----	-----	SFL1,SFY1
5	75090-VA4-030	PLATE ASSY., BALL CONTROL ...	1	-----	-----	SFL1,SFY1
6	75100-VA4-010	BRAKE COMP.	1	-----	-----	SFL1,SFY1
7	75110-VA4-000	RETAINER COMP., BALL	1	-----	-----	SFL1,SFY1
8	75120-VA4-010	DISK, BRAKE	1	-----	-----	SFL1,SFY1
9	75130-VA4-000	DISK, DRIVE	1	-----	-----	SFL1,SFY1
10	75132-VA4-000	SPRING, BRAKE HOLDER	3	-----	-----	SFL1,SFY1
11	75133-VA4-000	BUSH, BRAKE HOLDER	3	-----	-----	SFL1,SFY1
12	75140-VA4-020	PLATE COMP., BALL CONTROL ...	1	-----	-----	SFL1,SFY1
13	75150-VA3-J01	DISK COMP., DRIVEN	1	-----	-----	SFL1,SFY1
14	75182-VA3-J00	SPRING, CLUTCH RETURN (53.0MM)	2	-----	-----	SFL1,SFY1
15	75183-VA3-J00	SPRING, CLUTCH (36.6MM)	1	-----	-----	SFL1,SFY1
16	90014-952-000	BOLT, FLANGE, 6X14(CT200) ...	4	-----	-----	SFL1,SFY1
17	90021-VA4-000	BOLT, SPECIAL, 6MM	3	-----	-----	SFL1,SFY1
18	90501-952-010	WASHER, THRUST	1	-----	-----	SFL1,SFY1
19	91102-VA4-013	BEARING, RADIAL BALL, 6204 ..	1	-----	-----	SFL1,SFY1
20	91103-VA4-003	BEARING, RADIAL BALL, 60/22 ..	1	-----	-----	SFL1,SFY1
21	94401-16150	KEY, WOODRUFF, 16X15	1	-----	-----	SFL1,SFY1

PART NO. INDEX

E 2

Part Number	Address	Page	Ref.	Part Number	Address	Page	Ref.	Part Number	Address	Page	Ref.	Part Number	Address	Page	Ref.
90015-ZE5-010	D1	27	19	93500-05020-0A	C15	25	24								
90015-ZE6-000	C14	24	12		D1	27	24								
90016-Z1V-000	C12	22	17	93500-05028-0A	C16	26	25								
90016-ZE7-W00	C15	25	20												
	D1	27	20	94000											
90017-883-000	C3	13	27												
90018-ZE1-000	C14	24	13	94050-06000	C10	20	10								
90021-VA4-000	D4	30	17		C12	22	19								
90022-888-010	C3	13	28		C16	26	26								
90043-ZE6-000	C1	11	9		D1	27	25								
90048-ZC3-000	C1	11	10	94101-06800	C3	13	43								
90131-ZE1-000	C3	13	29	94102-12800	C14	24	19								
90201-Z1T-000	C13	23	6	94103-06000	C12	22	20								
	C14	24	14	94251-08000	C3	13	44								
90206-ZE1-000	C6	16	14	94301-08140	C3	13	45								
90300-Z1V-000	C10	20	9	94301-10160	C1	11	11								
90343-ZE6-000	C11	21	8	94401-16150	D4	30	21								
90401-ZE7-W00	C5	15	11												
90451-ZE1-000	C3	13	30	95000											
90452-166-600	C3	13	31												
90452-187-000	C3	13	32	95002-02080	C12	22	21								
90455-896-700	C12	22	18	95002-70000	C12	22	22								
90501-952-010	D4	30	18	95701-06008-00	C7	17	12								
90505-MCT-000	C16	26	29	95701-06010-00	C16	26	27								
	D2	28	27		D2	28	26								
90551-ZE1-000	C5	15	12	95701-06012-08	C3	13	46								
90581-Z1V-000	C8	18	4	95701-06035-00	C10	20	11								
90601-ZE1-000	C3	13	33	95701-08050-00	C1	11	12								
90602-ZE1-000	C3	13	34		C3	13	47								
90653-723-000	C14	24	16												
90659-680-013	C15	25	21	96000											
	D1	27	21												
90701-ZE6-000	C3	13	35	96100-62050-00	C3	13	48								
90702-ZE6-000	C14	24	17												
				98000											
91000				98079-54846	C1	11	13								
91102-VA4-013	D4	30	19	98079-54855	C1	11	13								
91103-VA4-003	D4	30	20	98079-55846	C1	11	13								
91205-Z1V-003	C3	13	36	98079-55855	C1	11	13								
91231-Z1V-003	C3	13	37	98079-56846	C1	11	13								
91251-Z1V-003	C3	13	38	98079-56855	C1	11	13								
91252-Z1V-003	C3	13	39												
91301-Z1V-003	C3	13	40	99000											
91302-Z1V-003	C3	13	41												
				99004-21002	D3	29	9								
92000				99004-21003	D3	29	9								
				99101-ZH8-0600	C9	19	21								
92101-06012-0H	C7	17	11	99101-ZH8-0620	C9	19	21								
				99101-ZH8-0650	C9	19	21								
93000				99204-ZE0-0350	C9	19	22								
93500-03006-1H	C9	19	20												
93500-04008-0A	C14	24	18												
	C15	25	22												
	D1	27	22												
93500-05016-0A	C3	13	42												
	C15	25	23												
	D1	27	23												

3

PART NAME INDEX

F 1

Part name	Address	Page	Ref.	Part name	Address	Page	Ref.	Part name	Address	Page	Ref.
[A]								[F]			
ARM, GOVERNOR	C15	25	2	CHAMBER SET, FLOAT	C9	19	4	FAN, COOLING	C13	23	2
	D1	27	2	CHOKER SET	C9	19	8	FILTER, BREATHER	C2	12	7
ARM, VALVE ROCKER	C6	16	4	CLAMP, BRAKE PIPE	C16	26	28	FILTER, OUTER	C10	20	3
ARRESTER KIT, SPARK	C11	21	1		D1	27	17	FLOAT SET	C9	19	3
ARRESTER, SPARK	C11	21	5	CLAMP, PIPE	C16	26	29	FLYWHEEL COMP.	C13	23	4
[B]											
BARREL ASSY., CYLINDER	C2	12	4		D2	28	27		C14	24	3
BASE COMP., BRAKE	C14	24	11	CLIP, GOVERNOR HOLDER	C3	13	34				
BASE COMP., HOLDER	C2	12	25	CLIP, HIGH TENSION CORD	C14	24	15				
BEARING, RADIAL BALL, 60/22 ..	D4	30	20	CLIP, PISTON PIN, 18MM	C5	15	12				
BEARING, RADIAL BALL, 6204 ..	D4	30	19	CLIP, TUBE	C12	22	15				
BEARING, RADIAL BALL, 6205 ..	C3	13	48								
BOLT, CONNECTING ROD	C5	15	10	CLIP, VALVE GUIDE	C1	11	4				
BOLT, DRAIN PLUG	C3	13	29	CLIP, WIRE HARNESS	C15	25	21	GASKET SET	C9	19	1
BOLT, FLANGE, 6MM	C14	24	12		D1	27	21	GASKET, CYLINDER HEAD	C1	11	5
BOLT, FLANGE, 6X10	C16	26	27	COIL ASSY., IGNITION	C8	18	2	GASKET, MUFFLER	C11	21	6
	D2	28	26	COLLAR B, AIR CLEANER	C10	20	8				
BOLT, FLANGE, 6X12	C1	11	8	COLLAR COMP., TANK	C12	22	8	GAUGE COMP., OIL LEVEL	C2	12	11
	C3	13	46	COLLAR, AIR CLEANER	C10	20	7	GAUGE, FUEL LEVEL	C12	22	13
				COLLAR, EXTENSION	C2	12	21	GEAR, DRIVEN	C2	12	24
				COLLAR, FAN	D4	30	1	GOVERNOR ASSY.	C2	12	13
				COLLAR, STOPPER	C15	25	13	GROMMET, AIR CLEANER	C10	20	6
					D1	27	12	GUIDE, EX. VALVE	C1	11	2
								GUIDE, IN. VALVE	C1	11	1
				COLLAR, TANK SET	C12	22	7	[G]			
				CONTROL ASSY.	C15	25	1				
BOLT, FLANGE, 6X14	C3	13	26		D1	27	1				
	D4	30	16	CONTROL COMP.	C15	25	6				
BOLT, FLANGE, 6X20	C3	13	28		D1	27	6				
BOLT, FLANGE, 6X23	C14	24	13	CORD, STOP SWITCH	C15	25	15				
BOLT, FLANGE, 6X28	C8	18	3								
BOLT, FLANGE, 6X32	C3	13	27		D1	27	14				
BOLT, FLANGE, 6X35	C10	20	11								
BOLT, FLANGE, 6X47	C12	22	16	COVER COMP., BREATHER	C2	12	6				
BOLT, FLANGE, 6X8	C7	17	12	COVER COMP., FAN	C8	18	1				
BOLT, FLANGE, 8X50	C1	11	12	COVER, AIR CLEANER	C10	20	5				
	C3	13	47	COVER, HEAD	C1	11	6				
BOLT, GOVERNOR ARM	C15	25	19	CRANKSHAFT COMP.	C4	14	5				
	D1	27	19								
BOLT, HEX., 6X12	C7	17	11								
BOLT, PIVOT, 8MM	C6	16	13								
BOLT, SPECIAL, 6MM	D4	30	17								
BOLT, STUD, 6X109	C1	11	9								
BOLT, STUD, 6X85	C1	11	10	CUSHION, RR. FENDER	C12	22	14				
BOLT, TANK STAY	C12	22	17								
BRAKE COMP.	C14	24	10	[D]							
	D4	30	6	DISK COMP., DRIVEN	D4	30	13				
BUSH, BLADE HOLDER	D4	30	4	DISK, BRAKE	D4	30	8	KEY, SPECIAL WOODRUFF, 25X18 ..	C13	23	1
BUSH, BRAKE HOLDER	D4	30	11	DISK, DRIVE	D4	30	9		C14	24	1
[C]				DOWEL PIN, 10X16	C1	11	11	KEY, WOODRUFF, 16X15	D4	30	21
CAMSHAFT ASSY.	C6	16	2	DOWEL PIN, 8X14	C3	13	45	KNOB, RECOIL STARTER	C7	17	9
CAM COMP., BRAKE	C14	24	6	DOWEL PIN, 8X9	C14	24	17	[K]			
CAP ASSY., FUEL TANK	C12	22	10	[E]							
CAP ASSY., NOISE SUPPRESSOR ..	C8	18	5	ELEMENT, AIR CLEANER	C10	20	2				
CARBURETOR ASSY.	C9	19	9	E-RING, 10MM	C14	24	16				
CASE COMP., AIR CLEANER	C10	20	4	EXTENSION, OIL FILLER	C2	12	12				
CASE COMP., RECOIL STARTER ...	C7	17	2	[L]							
								LABEL, CAUTION	D3	29	5
								LABEL, E-SPEC	D3	29	2
								LEVER, COCK	C9	19	16
								LIFTER, VALVE	C6	16	5

PART NAME INDEX

F 2

Part name	Address	Page	Ref.	Part name	Address	Page	Ref.	Part name	Address	Page	Ref.	
[M]				PROTECTOR COMP., MUFFLER	C11	21	4	SPRING, CONTROL ADJUSTING.....	D1	27	10	
MARK	D3	29	10	PROTECTOR, CONTROL	C15	25	12	SPRING, FRICTION.....	C7	17	6	
MARK A, COMBINATION	D3	29	4		D1	27	11	SPRING, GOVERNOR.....	C15	25	4	
MARK B, COMBINATION	D3	29	8	PULLEY COMP., STARTER	C13	23	3		D1	27	4	
MARK, EMBLEM	D3	29	1		C14	24	2	SPRING, LEVER.....	C15	25	9	
MARK, FUEL COCK CAUTION	D3	29	7	PULLEY, RECOIL STARTER	C7	17	3		D1	27	8	
MARK, MANUFACTURER	D3	29	3	[R]				SPRING, RECOIL STARTER.....	C7	17	7	
MUFFLER COMP.	C11	21	3	RATCHET, STARTER	C7	17	4	SPRING, RETURN	C7	17	8	
[N]				RETAINER COMP., BALL	D4	30	7	SPRING, SWITCH CONTROL	C14	24	5	
NOZZLE, MAIN	C9	19	11	RETAINER, IN. VALVE SPRING	C6	16	11	SPRING, THROTTLE RETURN.....	C15	25	5	
NUT, AIR CLEANER	C10	20	9	RING SET, PISTON	C4	14	1		D1	27	5	
NUT, FLANGE, 6MM	C10	20	10	ROD ASSY., CONNECTING	C4	14	4	SPRING, VALVE.....	C6	16	10	
	C12	22	19	ROD, CHOKE	C15	25	8	SPRING, WEIGHT RETURN.....	C6	16	7	
	C16	26	26		D1	27	7	STARTER ASSY., RECOIL.....	C7	17	1	
	D1	27	25	ROD, GOVERNOR	C15	25	3	STAY COMP., TANK.....	C2	12	22	
NUT, PIVOT ADJUSTING	C6	16	14		D1	27	3		C3	13	50	
NUT, SELF-LOCK, 6MM	C11	21	8	ROD, PUSH	C6	16	3	STRAINER, FUEL	C12	22	2	
NUT, SPECIAL, 14MM	C13	23	6	ROD, THROTTLE RETURN	C14	24	7	SWITCH ASSY., ENGINE STOP.....	C14	24	4	
	C14	24	14	ROPE, RECOIL STARTER	C7	17	10		C15	25	14	
[O]				RUBBER B, TANK MOUNTING	C12	22	6		D1	27	13	
OIL SEAL, 12X20X6.5	C3	13	36	RUBBER, OIL RETURN	C2	12	10	[T]				
OIL SEAL, 25X38X7	C3	13	38	RUBBER, SUPPORTER	C12	22	1	TANK COMP., FUEL.....	C12	22	4	
OIL SEAL, 25.4X40X7	C3	13	39	RUBBER, TANK MOUNTING	C12	22	9	TUBE, BREATHER	C10	20	1	
OIL SEAL, 6X11X4	C3	13	37	RUBBER, TANK SETTING	C12	22	3	TUBE, FUEL	C12	22	5	
O-RING, 22.1X2.2	C3	13	40	[S]								
O-RING, 25.5X3	C3	13	41	SCREW SET	C9	19	7	[V]				
[P]				SCREW SET, DRAIN	C9	19	6	VALVE SET, FLOAT.....	C9	19	2	
PACKING, BREATHER COVER	C2	12	9	SCREW SET, PILOT	C9	19	5	VALVE, BREATHER	C2	12	8	
PACKING, CARBURETOR	C9	19	15	SCREW, PAN, 3X6	C9	19	20	VALVE, EX.	C6	16	9	
PACKING, FUEL CAP	C12	22	12	SCREW, PAN, 4X8	C14	24	18	VALVE, IN.	C6	16	8	
PACKING, FUEL COCK	C9	19	19		C15	25	22	[W]				
PACKING, HEAD COVER	C1	11	7	SCREW, PAN, 5X16	C3	13	42	WASHER, 10X21.....	C3	13	32	
PACKING, INSULATOR	C9	19	13		C15	25	23	WASHER, DRAIN PLUG, 10.2MM	C3	13	33	
PACKING, OIL PAN	C2	12	3	SCREW, PAN, 5X20	D1	27	23	WASHER, PLAIN, 12MM	C14	24	19	
PACKING, PROTECTOR	C11	21	2		C15	25	24	WASHER, PLAIN, 6MM	C3	13	43	
PAN ASSY., OIL	C2	12	1	SCREW, PAN, 5X28	D1	27	24		C8	18	4	
			2	SCREW, RECESSED, 5X28	C16	26	25	WASHER, TANK MOUNTING.....	C12	22	20	
PIN, GOVERNOR WEIGHT	C2	12	16		C15	25	20	WASHER, THRUST	D4	30	18	
PIN, LOCK, 2.0	C3	13	35	SCREW, THROTTLE STOP	D1	27	20	WASHER, THRUST, 12MM	C3	13	31	
PIN, LOCK, 8MM	C3	13	44	SEAL, VALVE STEM	C9	19	10	WASHER, THRUST, 25.6MM	C5	15	11	
PIN, PISTON	C4	14	3	SHAFT, DRIVE	C2	12	23	WASHER, THRUST, 6MM	C3	13	30	
PISTON	C4	14	2	SHAFT, GOVERNOR ARM	C2	12	20	WEIGHT, GOVERNOR	C2	12	14	
PIVOT, ROCKER ARM	C6	16	6	SHAFT, GOVERNOR HOLDER	C2	12	17	WRENCH, BOX	D3	29	9	
PLATE ASSY., BALL CONTROL	D4	30	5	SLIDER, GOVERNOR	C2	12	19					
PLATE A, GUIDE	C3	13	49	SPACER COMP., CARBURETOR	C9	19	14					
PLATE COMP., BALL CONTROL	D4	30	12	SPONGE, FUEL CAP BREATHER	C12	22	11					
PLATE, FRICTION	C7	17	5	SPRING, BRAKE	C14	24	8					
PLATE, GOVERNOR SHAFT HOLDER	C2	12	18	SPRING, BRAKE HOLDER	D4	30	10					
PLATE, GUIDE	C2	12	5	SPRING, BRAKE RETURN	C14	24	9					
PLATE, LEVER SETTING	C9	19	17	SPRING, CLUTCH	D4	30	15					
PLATE, PUSH ROD GUIDE	C6	16	12	SPRING, CLUTCH RETURN	D4	30	14					
PLUG, SPARK	C1	11	13	SPRING, COCK LEVER	C9	19	18					
				SPRING, CONTROL ADJUSTING.....	C15	25	11					

1

FOREWORD INDEX

2

ENGINE GROUP

3

PART NUMBER INDEX

4

PART NAME INDEX

HONDA
The Power of Dreams

July 25, 2004



PARTS CATALOG NEWS

Honda Motor Co., Ltd. Service Division

PARTS CATALOG - CORRECTED

Printed in Japan

CODE NO.	14Z1V501
PARTS CATALOG NEWS	GXV160H2
NEWS NO.	001

Block No.	Ref. No.	Note	Part No.	Description	Reqd. QTY GXV 160 H2	Serial No.	Parts catalog code
E-3	49	T	12126-Z1V-000	PLATE A, GUIDE	1	-----	N1, N1F, N4, N5, N6, N6S, SFL, SFL1, SFY1
		D	12126-Z1V-800	1	-----	A14, C12, SFC
	50	T	17560-Z1V-000	STAY COMP., TANK	1	-----	A14, C12, N1, N1F, N4, N5, N6, N6S, SFC, SFL, SFL1, SFY1
		T	90013-883-000	BOLT, FLANGE, 6X12(CT200)	1	-----	A14, C12, N1, N1F, N4, N5, N6, N6S, SFC, SFL, SFL1, SFY1
E-17	15	T	90010-GE0-710	CLIP, TUBE	1	-----	A14
E-19-1	6	E	43140-ZE7-000	*PARTS NO. DELETION			
		D	43140-Z1V-000	CAM COMP., BRAKE	1	-----	A14, C12, SFC

NOTE A:PART NO. CHANGE D:NEWLY PROVIDED E:PART NO.DELETION K:REQUIRED NO. CORRECTION L:APPLICATION SERIAL NO. CORRECTION
T:APPLICATION CORRECTION Z:REMARKS CHANGE

September 06, 2004



PARTS CATALOG NEWS

Honda Motor Co., Ltd. Service Division

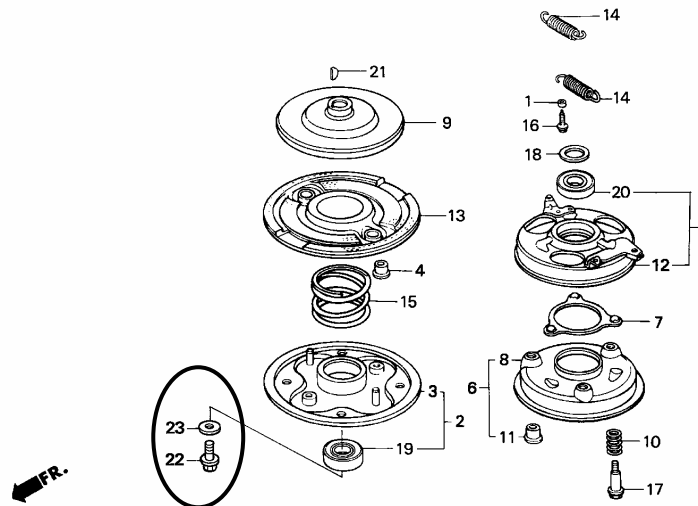
PARTS CATALOG - CORRECTED

Printed in Japan

CODE NO.	14Z1V501
PARTS CATALOG NEWS	GXV160H2
NEWS NO.	002

Block No.	Ref. No.	Note	Part No.	Description	Reqd. QTY GXV 160 H2	Serial No.	Parts catalog code
-----------	----------	------	----------	-------------	-------------------------------	------------	--------------------

E-40 BLADE HOLDER



Z1V0-E4000A

E-40	22	D	90105-960-003	BOLT, HEX., 10X25	1	-----	SFL1, SFY1
	23	D	90409-952-000	WASHER, 10MM	1	-----	SFL1, SFY1

NOTE A:PART NO. CHANGE D:NEWLY PROVIDED E:PART NO.DELETION K:REQUIRED NO. CORRECTION L:APPLICATION SERIAL NO. CORRECTION
T:APPLICATION CORRECTION Z:REMARKS CHANGE

October 03, 2004



PARTS CATALOG NEWS

Honda Motor Co., Ltd. Service Division

PARTS CATALOG - CORRECTED

Printed in Japan

CODE NO.	14Z1V501
PARTS CATALOG NEWS	GXV160H2
NEWS NO.	003

Block No.	Ref. No.	Note	Part No.	Description	Reqd. QTY GXV 160 H2	Serial No.	Parts catalog code
E-3	22	E	17517-ZE7-000	*PARTS NO. DELETION			
E-22	17	T	36103-ZE1-000	HOLDER, STOP SWITCH CORD	1	-----	SFL1, SFY, SFY1
E-22-1	16	T	36103-ZE1-000	HOLDER, STOP SWITCH CORD	1	-----	N1F

NOTE A:PART NO. CHANGE D:NEWLY PROVIDED E:PART NO.DELETION K:REQUIRED NO. CORRECTION L:APPLICATION SERIAL NO. CORRECTION
T:APPLICATION CORRECTION Z:REMARKS CHANGE

November 07, 2004



PARTS CATALOG NEWS

Honda Motor Co., Ltd. Service Division

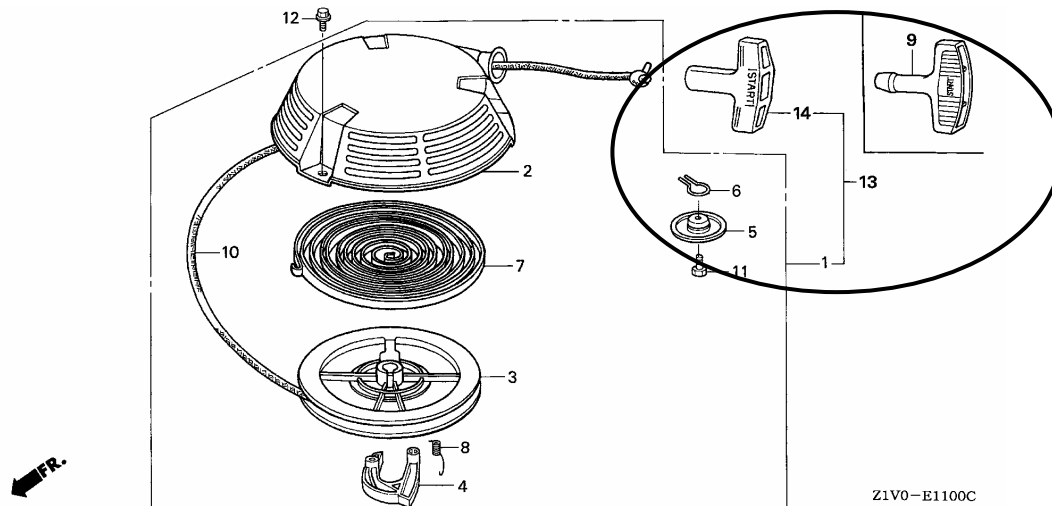
PARTS CATALOG - CORRECTED

Printed in Japan

CODE NO.	14Z1V501
PARTS CATALOG NEWS	GXV160H2
NEWS NO.	004

Block No.	Ref. No.	Note	Part No.	Description	Reqd. QTY	Serial No.	Parts catalog code
					GXV 160 H2		

E-11 RECOIL STARTER



E-11	1	E	28400-ZE7-V11ZB	*PARTS NO. DELETION
		E	28400-ZE7-V11ZC	*PARTS NO. DELETION

NOTE A:PART NO. CHANGE D:NEWLY PROVIDED E:PART NO.DELETION K:REQUIRED NO. CORRECTION L:APPLICATION SERIAL NO. CORRECTION
T:APPLICATION CORRECTION Z:REMARKS CHANGE

PARTS CATALOG NEWS

BOOKNo. : 14Z1V501

Block No.	Ref. No.	Note	Part No.	Description	Reqd. QTY		Serial No.	Parts catalog code
					GXV 160 H2			
		E	28400-ZE7-003ZB	*PARTS NO. DELETION				
		E	28400-ZE7-003ZC	*PARTS NO. DELETION				
		T	28400-Z1V-J51ZA	STARTER ASSY., RECOIL (LONG ROPE/HEPE) *R280* POWER RED	0	-----	-----	N15, N45, N55
		T	28400-Z1V-J51ZB	STARTER ASSY., RECOIL (LONG ROPE) *NH1* BLACK	0	-----	-----	N15, N45, N55
	9	E	28461-ZE1-003	*PARTS NO. DELETION				
	13	D	28400-ZE7-V11ZB	STARTER ASSY., RECOIL (LONG ROPE) *NH1* BLACK	1	-----	-----	N1F, N15, N45, N55
		D	28400-ZE7-V11ZC	*R280* POWER RED	1	-----	-----	N1F, N15, N45, N55
		D	28400-ZE7-003ZB	STARTER ASSY., RECOIL *NH1* BLACK	1	-----	-----	A14, SFL1, T1AH
		D	28400-ZE7-003ZC	*R280* POWER RED	1	-----	-----	A14, C12, C14, N1, N4, N5, N6, N6S, SFC, SFL, SFL1, SFY, SFY1
	14	D	28461-ZE1-003	KNOB, RECOIL STARTER	1	-----	-----	A14, C12, C14, N1, N1F, N15, N4, N45, N5, N55, N6, N6S, SFC, SFL, SFL1, SFY, SFY1, T1AH
E-19-1	5	E	36121-ZE6-000	*PARTS NO. DELETION				
		D	35129-Z1V-811	SPRING, SWITCH CONTROL	1	-----	-----	A1S, A1SA, A14, C12, C14, SFC

NOTE A:PART NO. CHANGE D:NEWLY PROVIDED E:PART NO.DELETION K:REQUIRED NO. CORRECTION L:APPLICATION SERIAL NO. CORRECTION
T:APPLICATION CORRECTION Z:REMARKS CHANGE

November 28, 2004



PARTS CATALOG NEWS

Honda Motor Co., Ltd. Service Division

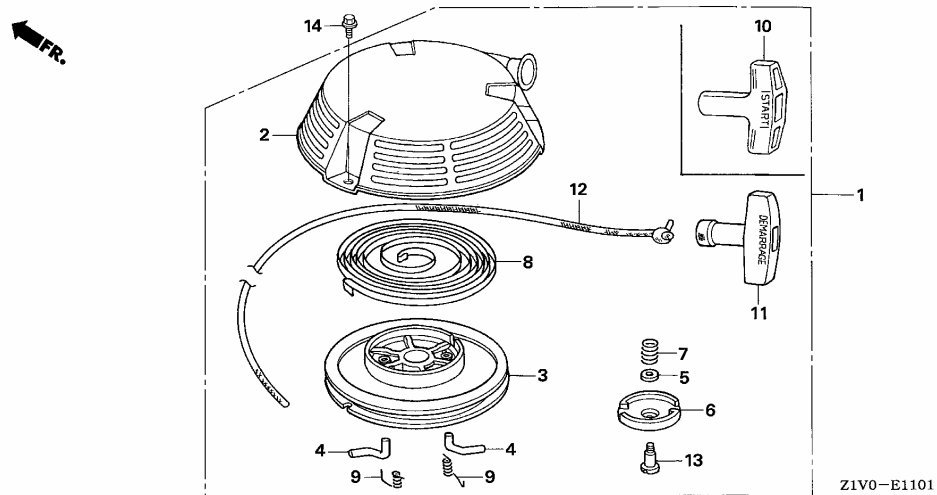
PARTS CATALOG - CORRECTED

Printed in Japan

CODE NO.	14Z1V501
PARTS CATALOG NEWS	GXV160H2
NEWS NO.	005

Block No.	Ref. No.	Note	Part No.	Description	Reqd. QTY GXV 160 H2	Serial No.	Parts catalog code
-----------	----------	------	----------	-------------	-------------------------------	------------	--------------------

E-11-1 RECOIL STARTER (2)



E-11-1	1	D	28400-Z1V-003ZA	STARTER ASSY., RECOIL *NH1*.....BLACK	1	-----	SFL1, T1AH
--------	---	---	-----------------	--	---	-------	------------

NOTE A:PART NO. CHANGE D:NEWLY PROVIDED E:PART NO.DELETION K:REQUIRED NO. CORRECTION L:APPLICATION SERIAL NO. CORRECTION
T:APPLICATION CORRECTION Z:REMARKS CHANGE

PARTS CATALOG NEWS

BOOKNo. : 14Z1V501

Block No.	Ref. No.	Note	Part No.	Description	Reqd. QTY	Serial No.	Parts catalog code
					GXV 160 H2		
		D	28400-Z1V-003ZB	*R280* POWER RED	1	-----	C12, C14, N1, N4, N5, N6, N6S, SFC, SFL, SFL1, SFY, SFY1
		D	28400-Z1V-801ZA	STARTER ASSY., RECOIL (LONG ROPE) *NH1* BLACK	1	-----	A1S, A1SA, A14, N1F, N15, N45, N5M, N55
		D	28400-Z1V-801ZB	*R280* POWER RED	1	-----	A1S, A1SA, A14, N1F, N15, N45, N5M, N55
	2	D	28410-Z1V-003ZA	CASE COMP., RECOIL STARTER *R280* POWER RED	1	-----	A1S, A1SA, A14, C12, C14, N1, N1F, N15, N4, N45, N5, N5M, N55, N6, N6S SFC, SFL, SFL1, SFY, SFY1
		D	28410-Z1V-003ZB	*NH1* BLACK	1	-----	A1S, A1SA, A14, N1F, N15, N45, N5M, N55, SFL1, T1AH
	3	D	28420-Z1V-003	REEL, RECOIL STARTER (BLACK)	1		
	4	D	28422-ZH8-801	RATCHET, STARTER	2		
	5	D	28431-ZH8-801	PLATE, FRICTION	1		
	6	D	28433-ZH8-801	GUIDE, RATCHET	1		
	7	D	28441-ZH8-801	SPRING, FRICTION	1		
	8	D	28442-ZH8-003	SPRING, RECOIL STARTER	1		
	9	D	28443-ZH8-801	SPRING, RETURN	2		
	10	D	28461-ZE1-003	KNOB, RECOIL STARTER (FOR LONG ROPE)	1	-----	A1S, A1SA, A14, N1F, N15, N45, N5M, N55
	11	D	28461-ZH8-003	GRIP, STARTER	1	-----	C12, C14, N1, N4, N5, N6, N6S, SFC, SFL, SFL1, SFY, SFY1, T1AH
	12	D	28462-ZH8-003	ROPE, RECOIL STARTER	1	-----	C12, C14, N1, N4, N5, N6, N6S, SFC, SFL, SFL1, SFY, SFY1, T1AH
		D	28462-Z1V-801	ROPE, RECOIL STARTER (LONG)	1	-----	A1S, A1SA, A14, N1F, N15, N45, N5M, N55
	13	D	90003-ZH8-801	SCREW, SETTING	1		
	14	D	95701-06008-00	BOLT, FLANGE, 6X8	3		

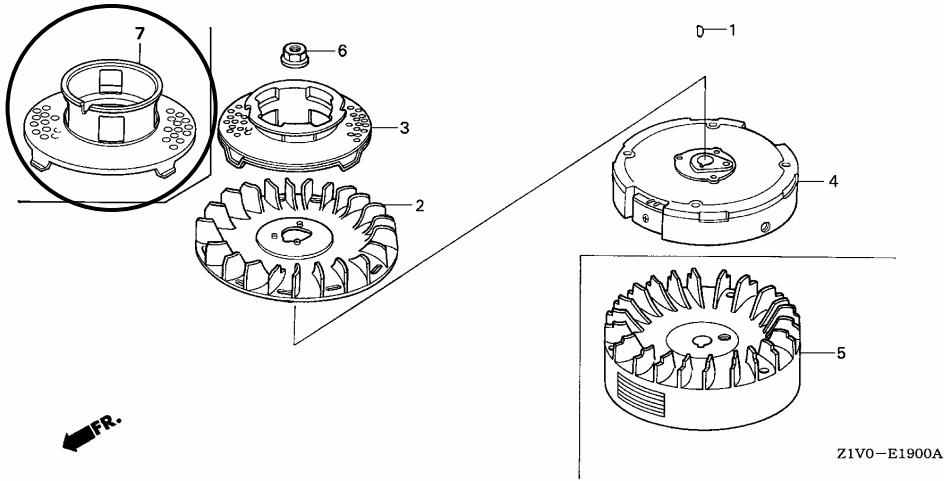
NOTE A:PART NO. CHANGE D:NEWLY PROVIDED E:PART NO.DELETION K:REQUIRED NO. CORRECTION L:APPLICATION SERIAL NO. CORRECTION
T:APPLICATION CORRECTION Z:REMARKS CHANGE

PARTS CATALOG NEWS

BOOKNo. : 14Z1V501

Block No.	Ref. No.	Note	Part No.	Description	Reqd. QTY	Serial No.	Parts catalog code
-----------	----------	------	----------	-------------	-----------	------------	--------------------

E-19 FLYWHEEL (1)



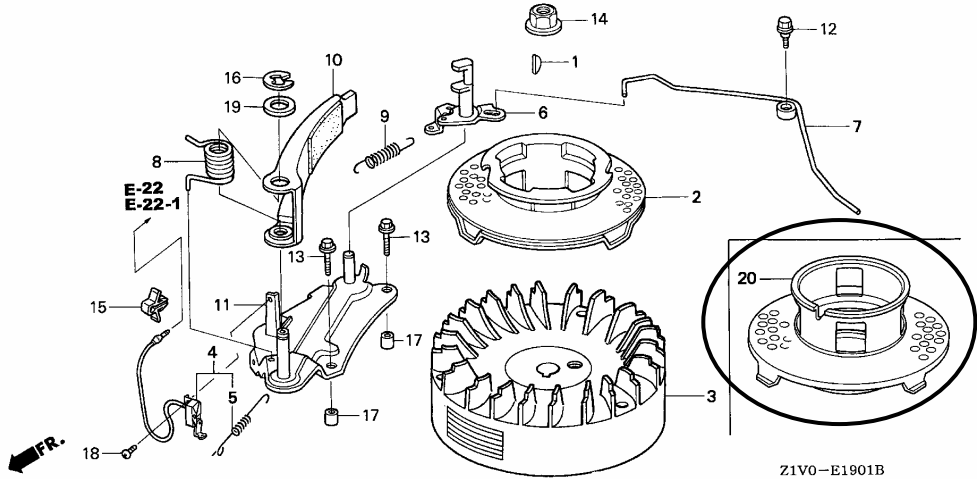
E-19	7	D	28450-Z1V-000	PULLEY COMP., STARTER	1	-----	N1, N1F, N15, N4, N45, N5, N5M, N55, N6, N6S, SFL, SFL1, SFY, SFY1, T1AH
------	---	---	---------------	-----------------------------	---	-------	--

NOTE A:PART NO. CHANGE D:NEWLY PROVIDED E:PART NO.DELETION K:REQUIRED NO. CORRECTION L:APPLICATION SERIAL NO. CORRECTION
 T:APPLICATION CORRECTION Z:REMARKS CHANGE

PARTS CATALOG NEWS

BOOKNo. : 14Z1V501

Block No.	Ref. No.	Note	Part No.	Description	Reqd. QTY	Serial No.	Parts catalog code
					GXV 160 H2		
E-19-1			FLYWHEEL (2)				



E-19-1	20	D	28450-Z1V-000	PULLEY COMP., STARTER	1	-----	A1S, A1SA, A14, C12, C14, SFC
--------	----	---	---------------	-----------------------------	---	-------	-------------------------------

NOTE A:PART NO. CHANGE D:NEWLY PROVIDED E:PART NO.DELETION K:REQUIRED NO. CORRECTION L:APPLICATION SERIAL NO. CORRECTION
T:APPLICATION CORRECTION Z:REMARKS CHANGE

December 19, 2004



PARTS CATALOG NEWS

Honda Motor Co., Ltd. Service Division

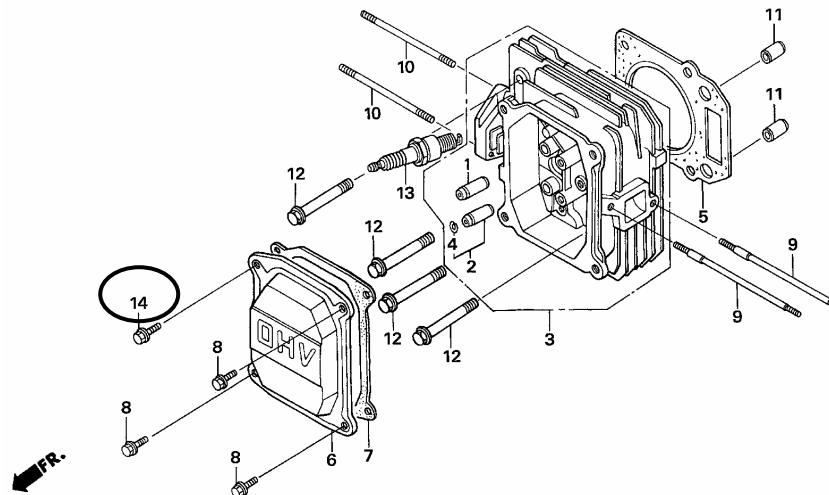
PARTS CATALOG - CORRECTED

Printed in Japan

CODE NO.	14Z1V501
PARTS CATALOG TITLE	GXV160H2
NEWS NO.	006

Block No.	Ref. No.	Note	Part No.	Description	Reqd. QTY GXV 160 H2	Serial No.	Parts catalog code
-----------	----------	------	----------	-------------	-------------------------------	------------	--------------------

E-2 CYLINDER HEAD



Z1V0-E0200C

E-2	8	K	90013-883-000	BOLT, FLANGE, 6X12 (CT200)	3	-----	A14, C12, N1, N1F, N4, N5, N6, N6S, SFC, SFL, SFL1, SFY1, T1AH
	14	T	90014-952-000	BOLT, FLANGE, 6X14 (CT200)	1	-----	A14, C12, N1, N1F, N4, N5, N6, N6S, SFC, SFL, SFL1, SFY1, T1AH

NOTE A:PART NO. CHANGE D:NEWLY PROVIDED E:PART NO.DELETION K:REQUIRED NO. CORRECTION L:APPLICATION SERIAL NO. CORRECTION
T:APPLICATION CORRECTION Z:REMARKS CHANGE

PARTS CATALOG NEWS

BOOKNo. : 14Z1V501

Block No.	Ref. No.	Note	Part No.	Description	Reqd. QTY	Serial No.	Parts catalog code
					GXV 160 H2		
E-3	4	T	12000-Z1V-000	BARREL ASSY., CYLINDER	0	-----	N1, N1F, N4, N5, N6, N6S, SFL, SFL1, SFY1, T1AH
		T	12000-Z2J-000	1	-----	N1, N1F, N4, N5, N6, N6S, SFL, SFL1, SFY1, T1AH
		D	12000-ZE7-405	(1)	-----	N1, N1F, N15, N4, N45, N5, N5M, N55, N6, N6S, SFL, SFL1, SFY, SFY1, T1AH
		D	12000-ZE7-406	(1)	-----	A1S, A1SA, A14, C12, C14, SFC

NOTE A:PART NO. CHANGE D:NEWLY PROVIDED E:PART NO.DELETION K:REQUIRED NO. CORRECTION L:APPLICATION SERIAL NO. CORRECTION
T:APPLICATION CORRECTION Z:REMARKS CHANGE

March 27, 2005



PARTS CATALOG NEWS

Honda Motor Co., Ltd. Service Division

PARTS CATALOG - CORRECTED

Printed in Japan

CODE NO.	14Z1V501
PARTS CATALOG TITLE	GXV160H2
NEWS NO.	007

Block No.	Ref. No.	Note	Part No.	Description	Reqd. QTY GXV 160 H2	Serial No.	Parts catalog code
E-28	9	T	99004-21002	WRENCH, BOX (P21)	0	-----	N6S, SFL
		T	99004-21003	0	-----	A14, N1F

NOTE A:PART NO. CHANGE D:NEWLY PROVIDED E:PART NO.DELETION K:REQUIRED NO. CORRECTION L:APPLICATION SERIAL NO. CORRECTION
T:APPLICATION CORRECTION Z:REMARKS CHANGE

April 24, 2005



PARTS CATALOG NEWS

Honda Motor Co., Ltd. Service Division

PARTS CATALOG - CORRECTED

Printed in Japan

CODE NO.	14Z1V501
PARTS CATALOG TITLE	GXV160H2
NEWS NO.	008

Block No.	Ref. No.	Note	Part No.	Description	Reqd. QTY GXV 160 H2	Serial No.	Parts catalog code
E-17	2	E	16952-ZA8-800	*PARTS NO. DELETION			
		T	16952-Z1V-000	STRAINER, FUEL	1	-----	A14, C12, N1, N1F, N4, N5, N6, N6S, SFC, SFL, SFL1, SFY1, T1AH

NOTE A:PART NO. CHANGE D:NEWLY PROVIDED E:PART NO.DELETION K:REQUIRED NO. CORRECTION L:APPLICATION SERIAL NO. CORRECTION T:APPLICATION CORRECTION Z:REMARKS CHANGE

July 17, 2005



PARTS CATALOG NEWS

Honda Motor Co., Ltd. Service Division

PARTS CATALOG - CORRECTED

Printed in Japan

CODE NO.	14Z1V501
PARTS CATALOG TITLE	GXV160H2
NEWS NO.	009

Block No.	Ref. No.	Note	Part No.	Description	Reqd. QTY	Serial No.	Parts catalog code
					GXV 160 H2		
E-11	1	L	28400-Z1V-J51ZA	STARTER ASSY., RECOIL (LONG ROPE)	1	----- 1098141	A1S, A1SA, N5M
				R280..... POWER RED			
	L	28400-Z1V-J51ZB	*NH1*..... BLACK	1	----- 1098141	A1S, A1SA, N5M	
			2	L	28410-ZE7-003ZB	CASE COMP., RECOIL STARTER	1
	NH1..... BLACK						
	L	28410-ZE7-003ZD	*R280*..... POWER RED	1	----- 1113862	SFL1, T1AH	
			3	L	28420-ZE7-003	PULLEY, RECOIL STARTER	1
	1	----- 1113862				C12, C14, N1, N4, N5, N6, N6S, SFC, SFL, SFL1, SFY, SFY1, T1AH	
	4	L	28422-896-010	RATCHET, STARTER	1	----- 1098141	A1S, A1SA, A14, N1F, N15, N45, N5M, N55
				1	----- 1113862	C12, C14, N1, N4, N5, N6, N6S, SFC, SFL, SFL1, SFY, SFY1, T1AH	
	5	L	28431-896-000	PLATE, FRICTION	1	----- 1098141	A1S, A1SA, A14, N1F, N15, N45, N5M, N55
				1	----- 1113862	C12, C14, N1, N4, N5, N6, N6S, SFC, SFL, SFL1, SFY, SFY1, T1AH	
6	L	28441-896-000	SPRING, FRICTION	1	----- 1098141	A1S, A1SA, A14, N1F, N15, N45, N5M, N55	

NOTE A:PART NO. CHANGE D:NEWLY PROVIDED E:PART NO.DELETION K:REQUIRED NO. CORRECTION L:APPLICATION SERIAL NO. CORRECTION
T:APPLICATION CORRECTION Z:REMARKS CHANGE

PARTS CATALOG NEWS

BOOKNo. : 14Z1V501

Block No.	Ref. No.	Note	Part No.	Description	Reqd. QTY	Serial No.	Parts catalog code
					GXV 160 H2		
					1	----- 1113862	C12, C14, N1, N4, N5, N6, N6S, SFC, SFL, SFL1, SFY, SFY1, T1AH
	7	L	28442-896-700	SPRING, RECOIL STARTER	1	----- 1098141	A1S, A1SA, A14, N1F, N15, N45, N5M, N55
					1	----- 1113862	C12, C14, N1, N4, N5, N6, N6S, SFC, SFL, SFL1, SFY, SFY1, T1AH
	8	L	28443-896-000	SPRING, RETURN	1	----- 1098141	A1S, A1SA, A14, N1F, N15, N45, N5M, N55
					1	----- 1113862	C12, C14, N1, N4, N5, N6, N6S, SFC, SFL, SFL1, SFY, SFY1, T1AH
	9	L	28461-ZE7-T00	GRIP, STARTER	1	----- 1098141	A1S, A1SA, N5M
	10	L	28462-ZA7-003	ROPE, RECOIL STARTER	1	----- 1098141	A14
					1	----- 1113862	C12, C14, N1, N4, N5, N6, N6S, SFC, SFL, SFL1, SFY, SFY1, T1AH
		L	28462-ZE7-V11	1	----- 1098141	A1S, A1SA, N1F, N15, N45, N5M, N55
	11	L	92101-06012-0H	BOLT, HEX., 6X12	1	----- 1098141	A1S, A1SA, A14, N1F, N15, N45, N5M, N55
					1	----- 1113862	C12, C14, N1, N4, N5, N6, N6S, SFC, SFL, SFL1, SFY, SFY1, T1AH
	12	L	95701-06008-00	BOLT, FLANGE, 6X8	3	----- 1098141	A1S, A1SA, A14, N1F, N15, N45, N5M, N55
					3	----- 1113862	C12, C14, N1, N4, N5, N6, N6S, SFC, SFL, SFL1, SFY, SFY1, T1AH
	13	L	28400-ZE7-V11ZB	STARTER ASSY., RECOIL (LONG ROPE) *NH1*..... BLACK	1	----- 1098141	N1F, N15, N45, N55
		L	28400-ZE7-V11ZC	*R280*..... POWER RED	1	----- 1098141	N1F, N15, N45, N55
		L	28400-ZE7-003ZB	STARTER ASSY., RECOIL *NH1*..... BLACK	1	----- 1098141	A14
					1	----- 1113862	SFL1, T1AH
		L	28400-ZE7-003ZC	*R280*..... POWER RED	1	----- 1098141	A14
					1	----- 1113862	C12, C14, N1, N4, N5, N6, N6S, SFC, SFL, SFL1, SFY, SFY1
	14	L	28461-ZE1-003	KNOB, RECOIL STARTER	1	----- 1098141	A14, N1F, N15, N45, N55
					1	----- 1113862	C12, C14, N1, N4, N5, N6, N6S, SFC, SFL, SFL1, SFY, SFY1, T1AH

NOTE A:PART NO. CHANGE D:NEWLY PROVIDED E:PART NO.DELETION K:REQUIRED NO. CORRECTION L:APPLICATION SERIAL NO. CORRECTION
T:APPLICATION CORRECTION Z:REMARKS CHANGE

PARTS CATALOG NEWS

BOOKNo. : 14Z1V501

Block No.	Ref. No.	Note	Part No.	Description	Reqd. QTY		Serial No.	Parts catalog code
					GXV 160 H2			
E-11-1	1	L	28400-Z1V-003ZA	STARTER ASSY., RECOIL	1		1113863 -----	SFL1, T1AH
				NH1.....BLACK				
	L	28400-Z1V-003ZB	*R280*.....POWER RED	1		1113863 -----	C12, C14, N1, N4, N5, N6, N6S, SFC, SFL, SFL1, SFY, SFY1	
	L	28400-Z1V-801ZA	STARTER ASSY., RECOIL (LONG ROPE)	1		1098142 -----	A1S, A1SA, A14, N1F, N15, N45, N5M, N55	
			NH1.....BLACK					
	L	28400-Z1V-801ZB	*R280*.....POWER RED	1		1098142 -----	A1S, A1SA, A14, N1F, N15, N45, N5M, N55	
	2	L	28410-Z1V-003ZA	CASE COMP., RECOIL STARTER	1		1098142 -----	A1S, A1SA, A14, N1F, N15, N45, N5M, N55
				R280.....POWER RED				
		L	28410-Z1V-003ZB	*NH1*.....BLACK	1		1098142 -----	A1S, A1SA, A14, N1F, N15, N45, N5M, N55
	3	L	28420-Z1V-003	REEL, RECOIL STARTER (BLACK)	1		1098142 -----	A1S, A1SA, A14, N1F, N15, N45, N5M, N55
	4	L	28422-ZH8-801	RATCHET, STARTER	2		1098142 -----	A1S, A1SA, A14, N1F, N15, N45, N5M, N55
	5	L	28431-ZH8-801	PLATE, FRICTION	1		1098142 -----	A1S, A1SA, A14, N1F, N15, N45, N5M, N55
6	L	28433-ZH8-801	GUIDE, RATCHET	1		1098142 -----	A1S, A1SA, A14, N1F, N15, N45, N5M, N55	
7	L	28441-ZH8-801	SPRING, FRICTION	1		1098142 -----	A1S, A1SA, A14, N1F, N15, N45, N5M, N55	
8	L	28442-ZH8-003	SPRING, RECOIL STARTER	1		1098142 -----	A1S, A1SA, A14, N1F, N15, N45, N5M, N55	
9	L	28443-ZH8-801	SPRING, RETURN	2		1098142 -----	A1S, A1SA, A14, N1F, N15, N45, N5M, N55	

NOTE A:PART NO. CHANGE D:NEWLY PROVIDED E:PART NO.DELETION K:REQUIRED NO. CORRECTION L:APPLICATION SERIAL NO. CORRECTION
T:APPLICATION CORRECTION Z:REMARKS CHANGE

PARTS CATALOG NEWS

BOOKNo. : 14Z1V501

Block No.	Ref. No.	Note	Part No.	Description	Reqd. QTY	Serial No.	Parts catalog code
					GXV 160 H2		
					2	1113863 -----	C12, C14, N1, N4, N5, N6, N6S, SFC, SFL, SFL1, SFY, SFY1, T1AH
	10	L	28461-ZE1-003	KNOB, RECOIL STARTER (FOR LONG ROPE)	1	1098142 -----	A1S, A1SA, A14, N1F, N15, N45, N5M, N55
	11	L	28461-ZH8-003	GRIP, STARTER	1	1113863 -----	C12, C14, N1, N4, N5, N6, N6S, SFC, SFL, SFL1, SFY, SFY1, T1AH
	12	L	28462-ZH8-003	ROPE, RECOIL STARTER	1	1113863 -----	C12, C14, N1, N4, N5, N6, N6S, SFC, SFL, SFL1, SFY, SFY1, T1AH
		L	28462-Z1V-801	ROPE, RECOIL STARTER (LONG) (2360MM)	1	1098142 -----	A1S, A1SA, A14, N1F, N15, N45, N5M, N55
	13	L	90003-ZH8-801	SCREW, SETTING	1	1098142 -----	A1S, A1SA, A14, N1F, N15, N45, N5M, N55
					1	1113863 -----	C12, C14, N1, N4, N5, N6, N6S, SFC, SFL, SFL1, SFY, SFY1, T1AH
	14	L	95701-06008-00	BOLT, FLANGE, 6X8	3	1098142 -----	A1S, A1SA, A14, N1F, N15, N45, N5M, N55
					3	1113863 -----	C12, C14, N1, N4, N5, N6, N6S, SFC, SFL, SFL1, SFY, SFY1, T1AH
E-19	3	L	28451-ZE7-003	PULLEY COMP., STARTER	1	----- 1098141	N1F, N15, N45, N5M, N55
					1	----- 1113862	N1, N4, N5, N6, N6S, SFL, SFL1, SFY, SFY1, T1AH
	7	L	28450-Z1V-000	PULLEY COMP., STARTER	1	1098142 -----	N1F, N15, N45, N5M, N55
					1	1113863 -----	N1, N4, N5, N6, N6S, SFL, SFL1, SFY, SFY1, T1AH
E-19-1	2	L	28451-ZE7-003	PULLEY COMP., STARTER	1	----- 1098141	A1S, A1SA, A14
					1	----- 1113862	C12, C14, SFC
	20	L	28450-Z1V-000	PULLEY COMP., STARTER	1	1098142 -----	A1S, A1SA, A14
					1	1113863 -----	C12, C14, SFC

NOTE A:PART NO. CHANGE D:NEWLY PROVIDED E:PART NO.DELETION K:REQUIRED NO. CORRECTION L:APPLICATION SERIAL NO. CORRECTION
T:APPLICATION CORRECTION Z:REMARKS CHANGE

October 16, 2005



PARTS CATALOG NEWS

Honda Motor Co., Ltd. Service Division

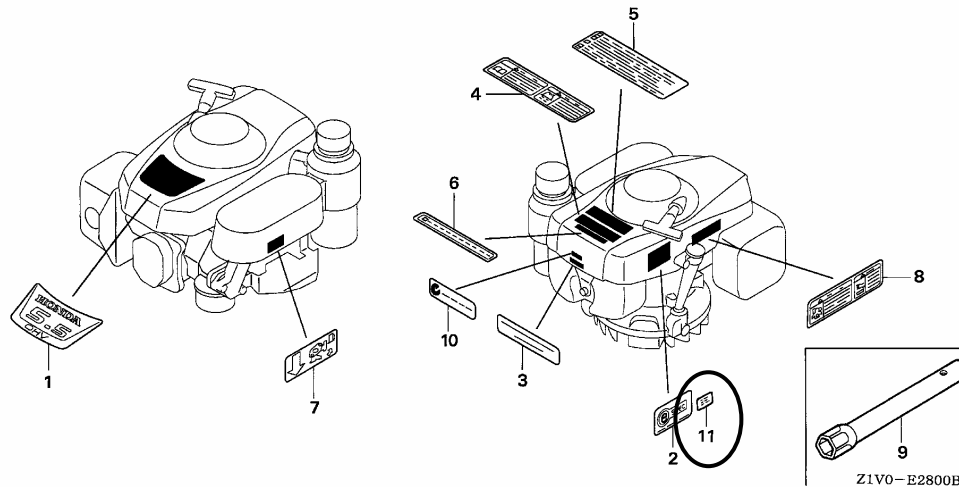
PARTS CATALOG - CORRECTED

Printed in Japan

CODE NO.	14Z1V501
PARTS CATALOG TITLE	GXV160H2
NEWS NO.	010

Block No.	Ref. No.	Note	Part No.	Description	Reqd. QTY GXV 160 H2	Serial No.	Parts catalog code
-----------	----------	------	----------	-------------	-------------------------------	------------	--------------------

E-28 LABEL/TOOL



E-28	11	D	87114-ZH7-000	LABEL, WARNING (NOT CERTIFIED FOR SALE)	1	1149398	----- N6
------	----	---	---------------	--	---	---------	----------

NOTE A:PART NO. CHANGE D:NEWLY PROVIDED E:PART NO.DELETION K:REQUIRED NO. CORRECTION L:APPLICATION SERIAL NO. CORRECTION
T:APPLICATION CORRECTION Z:REMARKS CHANGE



PARTS CATALOG NEWS

Honda Motor Co., Ltd. Service Division

PARTS CATALOG - CORRECTED

Printed in Japan

CODE NO.	14Z1V501
PARTS CATALOG TITLE	GXV160H2
NEWS NO.	011

Block No.	Ref. No.	Note	Part No.	Description	Reqd. QTY	Serial No.	Parts catalog code
					GXV 160 H2		
E-14	3	L	16013-ZE0-005	FLOAT SET	1	----- BE66J A	C12, C14, N5, N6, SFC
				(CARBURETOR NO.)	1	----- BE66M A	N6S
	D	16013-Z0S-B01	1	BE66N A -----	C12, C14, N5, N6, N6S, SFC	
			(CARBURETOR NO.)	1	BE66N A -----	C12, C14, N5, N6, N6S, SFC	
	8	L	16045-ZE7-005	CHOKE SET	1	----- BE66J A	C12, C14, N5, N6, SFC
				(CARBURETOR NO.)	1	----- BE66M A	N6S
	D	16044-ZE0-005	1	BE66N A -----	C12, C14, N5, N6, N6S, SFC	
			(CARBURETOR NO.)	1	BE66N A -----	C12, C14, N5, N6, N6S, SFC	
	11	L	16166-Z1V-003	NOZZLE, MAIN	1	----- BE66J A	C12, C14, N5, N6, N6S, SFC
				(CARBURETOR NO.)	1	BE66M A BE66M A	N6S
		T	16166-Z1V-J71	1	BE66M A BE66M A	N6S
	D	16166-Z1V-801	1	BE66N A -----	C12, C14, N5, N6, N6S, SFC	
(CARBURETOR NO.)			1	BE66N A -----	C12, C14, N5, N6, N6S, SFC		
21	L	99101-ZH8-0600	JET, MAIN, #60	(1)	----- BE66J A	C12, C14, N5, N6, N6S, SFC	
			(CARBURETOR NO.)	(1)	----- BE66J A	C12, C14, N5, N6, N6S, SFC	

NOTE A:PART NO. CHANGE D:NEWLY PROVIDED E:PART NO.DELETION K:REQUIRED NO. CORRECTION L:APPLICATION SERIAL NO. CORRECTION
T:APPLICATION CORRECTION Z:REMARKS CHANGE

PARTS CATALOG NEWS

BOOKNo. : 14Z1V501

Block No.	Ref. No.	Note	Part No.	Description	Reqd. QTY	Serial No.	Parts catalog code
					GXV 160 H2		
		K	99101-ZH8-0650	JET, MAIN, #65 (CARBURETOR NO.)	1	----- BE66J A	C12, C14, N5, N6, N6S, SFC
				(CARBURETOR NO.)	(1)	BE66M A -----	N6S
				(CARBURETOR NO.)	(1)	BE66N A -----	C12, C14, N5, N6, SFC
		D	99101-ZH8-0680	JET, MAIN, #68 (CARBURETOR NO.)	1	BE66M A -----	N6S
				(CARBURETOR NO.)	1	BE66N A -----	C12, C14, N5, N6, SFC

NOTE A:PART NO. CHANGE D:NEWLY PROVIDED E:PART NO.DELETION K:REQUIRED NO. CORRECTION L:APPLICATION SERIAL NO. CORRECTION
T:APPLICATION CORRECTION Z:REMARKS CHANGE

May 28, 2006



PARTS CATALOG NEWS

Honda Motor Co., Ltd. Service Division

PARTS CATALOG - CORRECTED

Printed in Japan

CODE NO.	14Z1V501
PARTS CATALOG NEWS	GXV160H2
NEWS NO.	012

Block No.	Ref. No.	Note	Part No.	Description	Reqd. QTY GXV 160 H2	Serial No.	Parts catalog code
E-3	1	E	11300-Z1V-000	*PARTS NO. DELETION			
		T	11300-Z1V-406	PAN ASSY., OIL	1	-----	A1S, A1SA, A14, C12, C14, N1, N1F, N15, N4, N45, N5, N55, N6, T1AH
	2	E	11300-Z1V-800	*PARTS NO. DELETION			
		D	11300-Z1V-407	PAN ASSY., OIL	1	-----	N6S, SFC, SFL, SFL1, SFY1

NOTE A:PART NO. CHANGE D:NEWLY PROVIDED E:PART NO.DELETION K:REQUIRED NO. CORRECTION L:APPLICATION SERIAL NO. CORRECTION
T:APPLICATION CORRECTION Z:REMARKS CHANGE

September 10, 2006



PARTS CATALOG NEWS

Honda Motor Co., Ltd. Service Division

PARTS CATALOG - CORRECTED

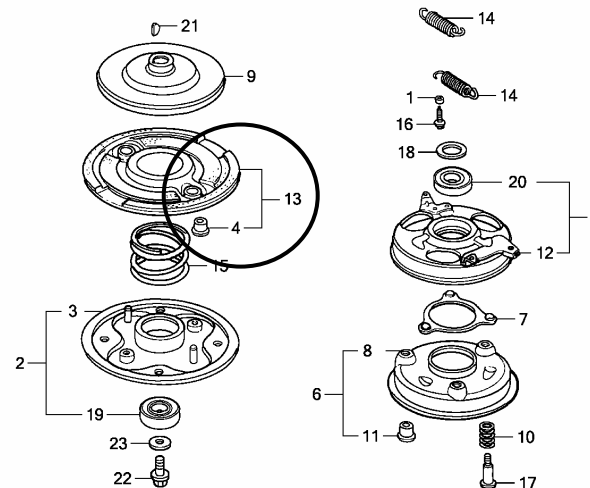
Printed in Japan

CODE NO.	14Z1V501
PARTS CATALOG NEWS	GXV160H2
NEWS NO.	013

Block No.	Ref. No.	Note	Part No.	Description	Reqd. QTY	Serial No.	Parts catalog code
					GXV 160 H2		

E-40 BLADE HOLDER

ILLUSTRATION CORRECTED



Z1V0E4000B

NOTE A:PART NO. CHANGE D:NEWLY PROVIDED E:PART NO.DELETION K:REQUIRED NO. CORRECTION L:APPLICATION SERIAL NO. CORRECTION
T:APPLICATION CORRECTION Z:REMARKS CHANGE

October 01, 2006



PARTS CATALOG NEWS

Honda Motor Co., Ltd. Service Division

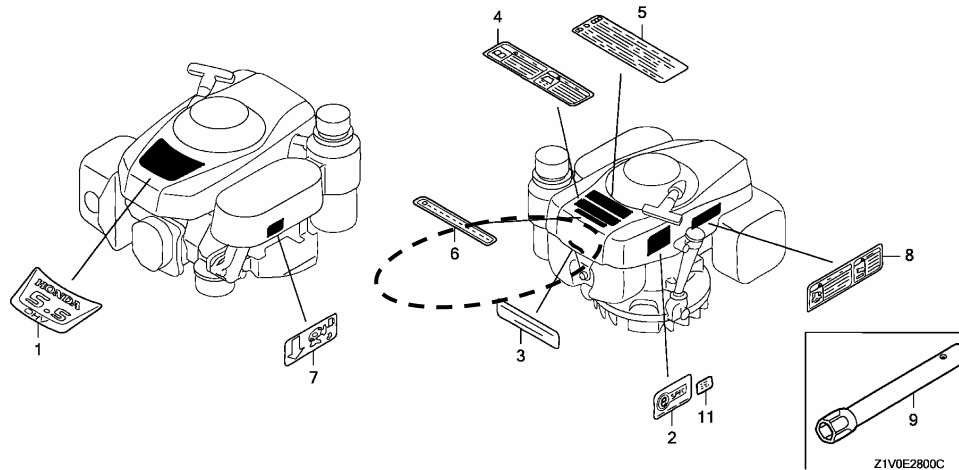
PARTS CATALOG - CORRECTED

Printed in Japan

CODE NO.	14Z1V501
PARTS CATALOG NEWS	GXV160H2
NEWS NO.	014

Block No.	Ref. No.	Note	Part No.	Description	Reqd. QTY GXV 160 H2	Serial No.	Parts catalog code
-----------	----------	------	----------	-------------	-------------------------------	------------	--------------------

E-28 LABEL/TOOL



E-28 10 E 87637-ZM3-800 *PARTS NO. DELETION

NOTE A:PART NO. CHANGE D:NEWLY PROVIDED E:PART NO.DELETION K:REQUIRED NO. CORRECTION L:APPLICATION SERIAL NO. CORRECTION
T:APPLICATION CORRECTION Z:REMARKS CHANGE

January 28, 2007



PARTS CATALOG NEWS

Honda Motor Co., Ltd. Service Division

PARTS CATALOG - CORRECTED

Printed in Japan

CODE NO.	14Z1V501
PARTS CATALOG NEWS	GXV160H2
NEWS NO.	015

Block No.	Ref. No.	Note	Part No.	Description	Reqd. QTY	Serial No.		Parts catalog code
					GXV 160 H2			
E-3	4	T	12000-Z1V-000	BARREL ASSY., CYLINDER	0	-----	-----	C12, C14, SFC
		T	12000-Z2J-000	0	-----	-----	N4C, N5, N6, N6S
		D	12000-Z1V-405	1	-----	-----	C12, C14, SFC
		D	12000-Z2J-405	1	-----	-----	N4C, N5, N6, N6S

NOTE A:PART NO. CHANGE D:NEWLY PROVIDED E:PART NO.DELETION K:REQUIRED NO. CORRECTION L:APPLICATION SERIAL NO. CORRECTION
T:APPLICATION CORRECTION Z:REMARKS CHANGE

April 01, 2007



PARTS CATALOG NEWS

Honda Motor Co., Ltd. Service Division

PARTS CATALOG - CORRECTED

Printed in Japan

CODE NO.	14Z1V501
PARTS CATALOG NEWS	GXV160H2
NEWS NO.	016

Block No.	Ref. No.	Note	Part No.	Description	Reqd. QTY	Serial No.	Parts catalog code
E-14	8	E	16044-ZE0-005	*PARTS NO. DELETION			
		D	16045-Z1V-G01	CHOKE SET	1	-----	N4C
				(CARBURETOR NO.)	1	BE66N A -----	C12, C14, N5, N6, N6S, SFC

NOTE A:PART NO. CHANGE D:NEWLY PROVIDED E:PART NO.DELETION K:REQUIRED NO. CORRECTION L:APPLICATION SERIAL NO. CORRECTION
 T:APPLICATION CORRECTION Z:REMARKS CHANGE

April 16, 2007



PARTS CATALOG NEWS

Honda Motor Co., Ltd. Service Division

PARTS CATALOG - CORRECTED

Printed in Japan

CODE NO.	14Z1V501
PARTS CATALOG NEWS	GXV160H2
NEWS NO.	017

Block No.	Ref. No.	Note	Part No.	Description	Reqd. QTY	Serial No.	Parts catalog code
					GXV 160 H2		
E-7	1	L	13010-ZL0-003	RING SET, PISTON (STD.) (TEIKOKU)	1	----- 1250645	C12, C14, N4C, N5, N6, N6S, SFC
		L	13010-ZL0-004	RING SET, PISTON (STD.) (NIPPON)	1	----- 1250645	C12, C14, N4C, N5, N6, N6S, SFC
		L	13011-ZL0-003	RING SET, PISTON (0.25) (TEIKOKU)	(1)	----- 1250645	C12, C14, N4C, N5, N6, N6S, SFC
		L	13011-ZL0-004	RING SET, PISTON (0.25) (NIPPON)	(1)	----- 1250645	C12, C14, N4C, N5, N6, N6S, SFC
		L	13012-ZL0-003	RING SET, PISTON (0.50) (TEIKOKU)	(1)	----- 1250645	C12, C14, N4C, N5, N6, N6S, SFC
		L	13012-ZL0-004	RING SET, PISTON (0.50) (NIPPON)	(1)	----- 1250645	C12, C14, N4C, N5, N6, N6S, SFC
		L	13013-ZL0-003	RING SET, PISTON (0.75) (TEIKOKU)	(1)	----- 1250645	C12, C14, N4C, N5, N6, N6S, SFC
		L	13013-ZL0-004	RING SET, PISTON (0.75) (NIPPON)	(1)	----- 1250645	C12, C14, N4C, N5, N6, N6S, SFC
		D	13010-Z4K-004	RING SET, PISTON (STD.) (TEIKOKU)	1	1250646 -----	C12, C14, N4C, N5, N6, N6S, SFC
		D	13010-Z4P-003	RING SET, PISTON (STD.) (RIKEN)	1	1250646 -----	C12, C14, N4C, N5, N6, N6S, SFC

NOTE A:PART NO. CHANGE D:NEWLY PROVIDED E:PART NO.DELETION K:REQUIRED NO. CORRECTION L:APPLICATION SERIAL NO. CORRECTION
T:APPLICATION CORRECTION Z:REMARKS CHANGE

PARTS CATALOG NEWS

BOOKNo. : 14Z1V501

Block No.	Ref. No.	Note	Part No.	Description	Reqd. QTY	Serial No.	Parts catalog code
					GXV 160 H2		
		D	13011-Z4K-004	RING SET, PISTON (0.25) (TEIKOKU)	(1)	1250646 -----	C12, C14, N4C, N5, N6, N6S, SFC
		D	13011-Z4P-003	RING SET, PISTON (0.25) (RIKEN)	(1)	1250646 -----	C12, C14, N4C, N5, N6, N6S, SFC
		D	13012-Z4K-004	RING SET, PISTON (0.50) (TEIKOKU)	(1)	1250646 -----	C12, C14, N4C, N5, N6, N6S, SFC
		D	13012-Z4P-003	RING SET, PISTON (0.50) (RIKEN)	(1)	1250646 -----	C12, C14, N4C, N5, N6, N6S, SFC
		D	13013-Z4K-004	RING SET, PISTON (0.75) (TEIKOKU)	(1)	1250646 -----	C12, C14, N4C, N5, N6, N6S, SFC
		D	13013-Z4P-003	RING SET, PISTON (0.75) (RIKEN)	(1)	1250646 -----	C12, C14, N4C, N5, N6, N6S, SFC
	2	L	13101-ZH8-010	PISTON (STD.)	1	----- 1250645	C12, C14, N4C, N5, N6, N6S, SFC
		L	13101-Z1T-000	PISTON (STD.) (JIALING-HONDA) .	1	----- 1250645	C12, C14, N4C, N5, N6, N6S, SFC
		L	13102-ZE7-020	PISTON (0.25)	(1)	----- 1250645	C12, C14, N4C, N5, N6, N6S, SFC
		L	13103-ZE7-020	PISTON (0.50)	(1)	----- 1250645	C12, C14, N4C, N5, N6, N6S, SFC
		L	13104-ZE7-020	PISTON (0.75)	(1)	----- 1250645	C12, C14, N4C, N5, N6, N6S, SFC
		D	13101-ZH8-020	PISTON (STD.)	1	1250646 -----	C12, C14, N4C, N5, N6, N6S, SFC
		D	13101-Z1T-010	PISTON (STD.) (JIALING-HONDA) .	1	1250646 -----	C12, C14, N4C, N5, N6, N6S, SFC
		D	13102-ZH8-020	PISTON (0.25)	(1)	1250646 -----	C12, C14, N4C, N5, N6, N6S, SFC
		D	13103-ZH8-020	PISTON (0.50)	(1)	1250646 -----	C12, C14, N4C, N5, N6, N6S, SFC
		D	13104-ZH8-020	PISTON (0.75)	(1)	1250646 -----	C12, C14, N4C, N5, N6, N6S, SFC
E-12	2	L	30500-Z1V-003	COIL ASSY., IGNITION	1	----- 1224256	C12, C14, N4C, N5, N6, N6S, SFC
		D	30500-Z1V-013	1	1224257 -----	C12, C14, N4C, N5, N6, N6S, SFC

NOTE A:PART NO. CHANGE D:NEWLY PROVIDED E:PART NO.DELETION K:REQUIRED NO. CORRECTION L:APPLICATION SERIAL NO. CORRECTION
T:APPLICATION CORRECTION Z:REMARKS CHANGE

April 29, 2007



PARTS CATALOG NEWS

Honda Motor Co., Ltd. Service Division

PARTS CATALOG - CORRECTED

Printed in Japan

CODE NO.	14Z1V501
PARTS CATALOG NEWS	GXV160H2
NEWS NO.	018

Block No.	Ref. No.	Note	Part No.	Description	Reqd. QTY	Serial No.	Parts catalog code
					GXV160H2		
E-2	8	L	90013-883-000	BOLT, FLANGE, 6X12(CT200)	3	----- 1206437	C12, C14, N4C, N5, N6, N6S, SFC
			90014-952-000	BOLT, FLANGE, 6X14(CT200)	3	1206438 -----	C12, C14, N4C, N5, N6, N6S, SFC
E-3	23	L	23411-ZE7-000	SHAFT, DRIVE	1	----- 1182612	N6S, SFC
			23411-ZE7-010	1	1182613 -----	N6S, SFC
E-22-1	11	T	16585-ZE7-000	PROTECTOR, CONTROL	1	1203638 -----	C14
			95701-06010-00	BOLT, FLANGE, 6X10	2	1203638 -----	C14
E-28	2	L	87135-ZE2-020	LABEL, E-SPEC (15.5X27.5)	1	----- 1170174	C12, C14, N1, N4, N5, N6, SFC, T1AH
			87522-Z1V-000	LABEL, CAUTION	1	1192411 -----	N4C
			87522-Z1V-800	LABEL, CAUTION (CHINESE)	1	1192411 -----	N4C
E-40	1	L	19512-883-000	COLLAR, FAN	2	----- 1134367	SFL1, SFY1
			72600-VA4-010	HOLDER ASSY., BLADE	1	----- 1134367	SFL1, SFY1
			72610-VA4-000	HOLDER COMP., BLADE	1	----- 1134367	SFL1, SFY1
			72613-VA4-000	BUSH, BLADE HOLDER	2	----- 1134367	SFL1, SFY1
			75090-VA4-030	PLATE ASSY., BALL CONTROL	1	----- 1134367	SFL1, SFY1

NOTE A:PART NO. CHANGE D:NEWLY PROVIDED E:PART NO.DELETION K:REQUIRED NO. CORRECTION L:APPLICATION SERIAL NO. CORRECTION
 T:APPLICATION CORRECTION Z:REMARKS CHANGE

PARTS CATALOG NEWS

BOOKNo. : 14Z1V501

Block No.	Ref. No.	Note	Part No.	Description	Reqd. QTY	Serial No.	Parts catalog code
					GXV 160 H2		
	6	L	75100-VA4-010	BRAKE COMP.	1	----- 1134367	SFL1, SFY1
	7	L	75110-VA4-000	RETAINER COMP., BALL	1	----- 1134367	SFL1, SFY1
	8	L	75120-VA4-010	DISK, BRAKE	1	----- 1134367	SFL1, SFY1
	9	L	75130-VA4-000	DISK, DRIVE	1	----- 1134367	SFL1, SFY1
	10	L	75132-VA4-000	SPRING, BRAKE HOLDER	3	----- 1134367	SFL1, SFY1
	11	L	75133-VA4-000	BUSH, BRAKE HOLDER	3	----- 1134367	SFL1, SFY1
	12	L	75140-VA4-020	PLATE COMP., BALL CONTROL	1	----- 1134367	SFL1, SFY1
	13	L	75150-VA3-J01	DISK COMP., DRIVEN	1	----- 1134367	SFL1, SFY1
	14	L	75182-VA3-J00	SPRING, CLUTCH RETURN (53.0MM)	2	----- 1134367	SFL1, SFY1
	15	L	75183-VA3-J00	SPRING, CLUTCH (36.6MM)	1	----- 1134367	SFL1, SFY1
	16	L	90014-952-000	BOLT, FLANGE, 6X14(CT200)	4	----- 1134367	SFL1, SFY1
	17	L	90021-VA4-000	BOLT, SPECIAL, 6MM	3	----- 1134367	SFL1, SFY1
	18	L	90501-952-010	WASHER, THRUST	1	----- 1134367	SFL1, SFY1
	19	L	91102-VA4-013	BEARING, RADIAL BALL, 6204 ...	1	----- 1134367	SFL1, SFY1
	20	L	91103-VA4-003	BEARING, RADIAL BALL, 60/22 ..	1	----- 1134367	SFL1, SFY1
	21	L	94401-16150	KEY, WOODRUFF, 16X15	1	----- 1134367	SFL1, SFY1
	22	L	90105-960-003	BOLT, HEX., 10X25	1	----- 1134367	SFL1, SFY1
	23	L	90409-952-000	WASHER, 10MM	1	----- 1134367	SFL1, SFY1

NOTE A:PART NO. CHANGE D:NEWLY PROVIDED E:PART NO.DELETION K:REQUIRED NO. CORRECTION L:APPLICATION SERIAL NO. CORRECTION
T:APPLICATION CORRECTION Z:REMARKS CHANGE

May 27, 2007



PARTS CATALOG NEWS

Honda Motor Co., Ltd. Service Division

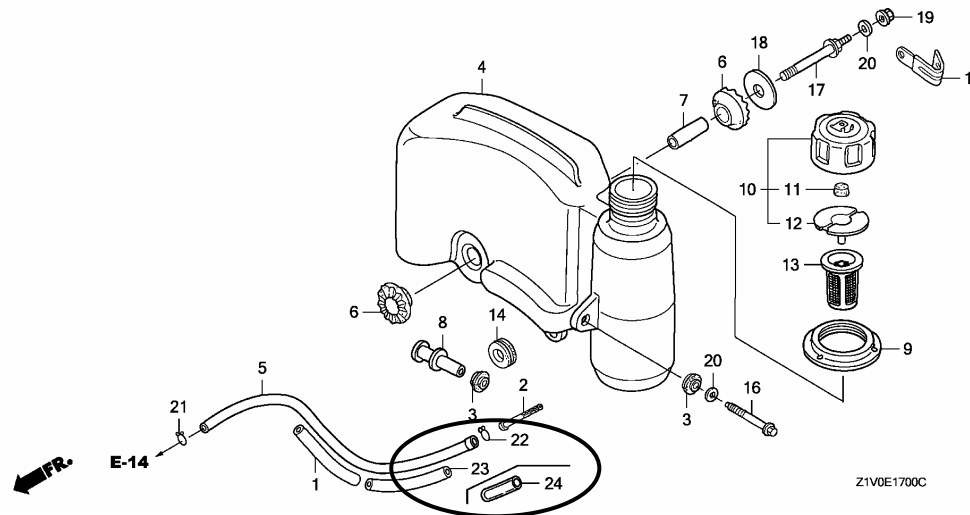
PARTS CATALOG - CORRECTED

Printed in Japan

CODE NO.	14Z1V501
PARTS CATALOG NEWS	GXV160H2
NEWS NO.	019

Block No.	Ref. No.	Note	Part No.	Description	Reqd. QTY GXV 160 H2	Serial No.	Parts catalog code
-----------	----------	------	----------	-------------	-------------------------------	------------	--------------------

E-17 FUEL TANK



E-17	1	K	16854-ZH8-000	RUBBER, SUPPORTER (107MM)	1		
	5	L	17512-ZE7-000	TUBE, FUEL	1	----- 1276790	C12, C14, N4C, N5, N6, N6S, SFC

NOTE A:PART NO. CHANGE D:NEWLY PROVIDED E:PART NO.DELETION K:REQUIRED NO. CORRECTION L:APPLICATION SERIAL NO. CORRECTION
T:APPLICATION CORRECTION Z:REMARKS CHANGE

PARTS CATALOG NEWS

BOOKNo. : 14Z1V501

Block No.	Ref. No.	Note	Part No.	Description	Reqd. QTY		Serial No.	Parts catalog code
					GXV 160 H2			
		D	17512-ZE7-010	1		1276791 -----	C12, C14, N4C, N5, N6, N6S, SFC
	23	D	16854-ZH8-000	RUBBER, SUPPORTER (107MM)	1		-----	A1S, A1SA, A14, N1, N1F, N15, N4, N45, N5M, N55, SFL, SFL1, SFY, SFY1 T1AH
					1		----- 1276790	C12, C14, N4C, N5, N6, N6S, SFC
	24	D	95003-25003-20	TUBE, VINYL, 9X11X30 (95003-25001-10M)	1		1276791 -----	C12, C14, N4C, N5, N6, N6S, SFC

NOTE A:PART NO. CHANGE D:NEWLY PROVIDED E:PART NO.DELETION K:REQUIRED NO. CORRECTION L:APPLICATION SERIAL NO. CORRECTION
T:APPLICATION CORRECTION Z:REMARKS CHANGE

June 10, 2007



PARTS CATALOG NEWS

Honda Motor Co., Ltd. Service Division

PARTS CATALOG - CORRECTED

Printed in Japan

CODE NO.	14Z1V501
PARTS CATALOG NEWS	GXV160H2
NEWS NO.	020

Block No.	Ref. No.	Note	Part No.	Description	Reqd. QTY GXV 160 H2	Serial No.	Parts catalog code
E-14	9	L	16100-Z1V-003	CARBURETOR ASSY. (BE66J A) ...	1	----- 1095195	C12, C14, N5, N6, SFC
		T	16100-Z1V-801	CARBURETOR ASSY. (BE66N A) ...	1	1095196 -----	C12, C14, N5, N6, SFC

NOTE A:PART NO. CHANGE D:NEWLY PROVIDED E:PART NO.DELETION K:REQUIRED NO. CORRECTION L:APPLICATION SERIAL NO. CORRECTION
T:APPLICATION CORRECTION Z:REMARKS CHANGE

August 12, 2007



PARTS CATALOG NEWS

Honda Motor Co., Ltd. Service Division

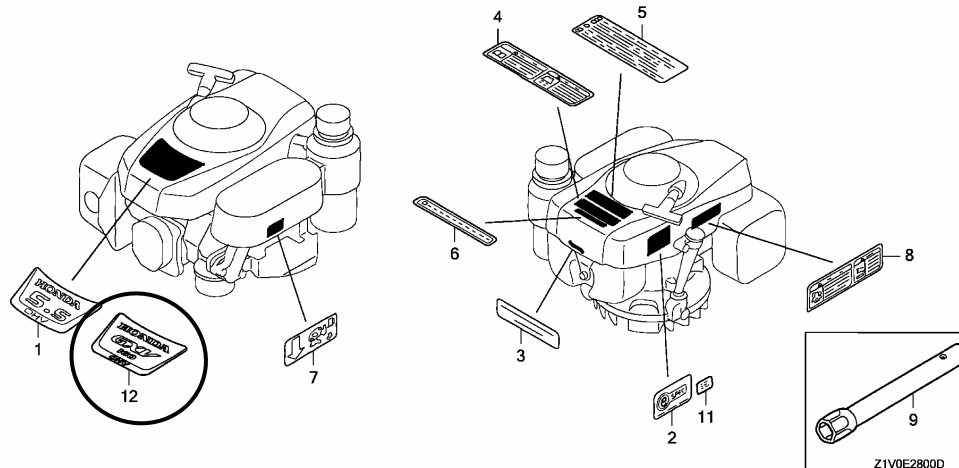
PARTS CATALOG - CORRECTED

Printed in Japan

CODE NO.	14Z1V501
PARTS CATALOG NEWS	GXV160H2
NEWS NO.	021

Block No.	Ref. No.	Note	Part No.	Description	Reqd. QTY GXV 160 H2	Serial No.	Parts catalog code
-----------	----------	------	----------	-------------	-------------------------------	------------	--------------------

E-28 LABEL/TOOL



E-28	1	L	87101-Z1V-000	MARK, EMBLEM (GXV160 5.5)	1	----- 1250645	C12, C14, N4C, N5, N6, SFC
	12	D	87101-Z1V-010	MARK, EMBLEM (GXV160)	1	1240646 -----	C12, C14, N4C, N5, N6, SFC

NOTE A:PART NO. CHANGE D:NEWLY PROVIDED E:PART NO.DELETION K:REQUIRED NO. CORRECTION L:APPLICATION SERIAL NO. CORRECTION
T:APPLICATION CORRECTION Z:REMARKS CHANGE



PARTS CATALOG NEWS

Honda Motor Co., Ltd. Service Division

PARTS CATALOG - CORRECTED

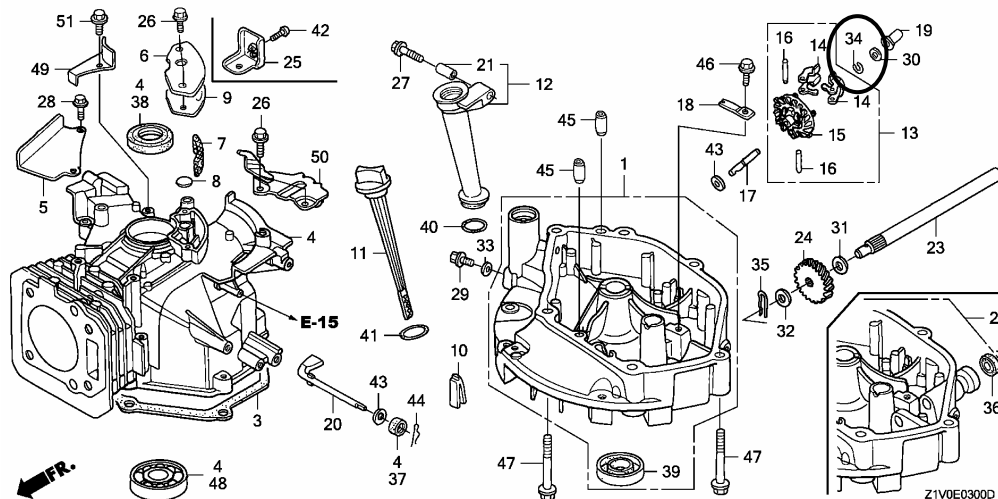
Printed in Japan

CODE NO.	14Z1V501
PARTS CATALOG NEWS	GXV160H2
NEWS NO.	022

Block No.	Ref. No.	Note	Part No.	Description	Reqd. QTY GXV 160 H2	Serial No.	Parts catalog code
-----------	----------	------	----------	-------------	-------------------------------	------------	--------------------

E-3 CYLINDER BARREL

ILLUSTRATION CORRECTED



NOTE A:PART NO. CHANGE D:NEWLY PROVIDED E:PART NO.DELETION K:REQUIRED NO. CORRECTION L:APPLICATION SERIAL NO. CORRECTION
T:APPLICATION CORRECTION Z:REMARKS CHANGE

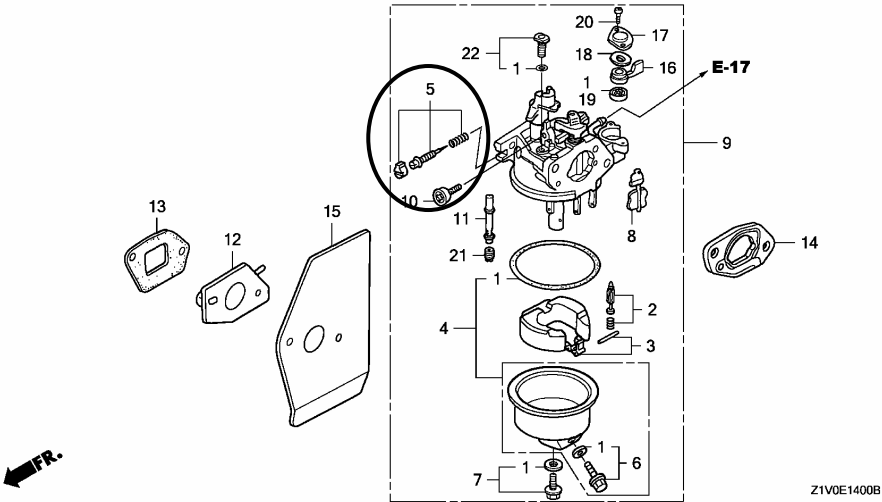
PARTS CATALOG NEWS

BOOKNo. : 14Z1V501

Block No.	Ref. No.	Note	Part No.	Description	Reqd. QTY GXV 160 H2	Serial No.	Parts catalog code
-----------	----------	------	----------	-------------	-------------------------------	------------	--------------------

E-14 CARBURETOR

ILLUSTRATION CORRECTED



Z1V0E1400B

NOTE A:PART NO. CHANGE D:NEWLY PROVIDED E:PART NO.DELETION K:REQUIRED NO. CORRECTION L:APPLICATION SERIAL NO. CORRECTION
T:APPLICATION CORRECTION Z:REMARKS CHANGE

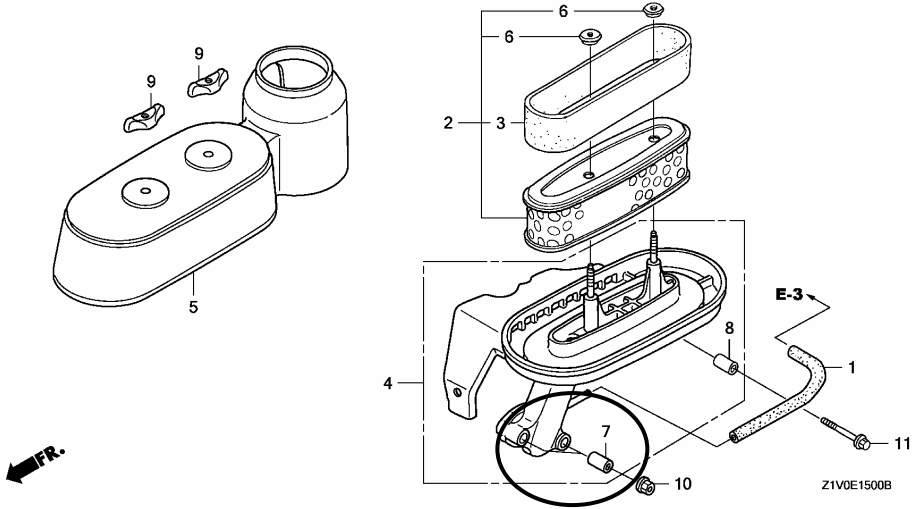
PARTS CATALOG NEWS

BOOKNo. : 14Z1V501

Block No.	Ref. No.	Note	Part No.	Description	Reqd. QTY GXV 160 H2	Serial No.	Parts catalog code
-----------	----------	------	----------	-------------	-------------------------------	------------	--------------------

E-15 AIR CLEANER

ILLUSTRATION CORRECTED



NOTE A:PART NO. CHANGE D:NEWLY PROVIDED E:PART NO.DELETION K:REQUIRED NO. CORRECTION L:APPLICATION SERIAL NO. CORRECTION
T:APPLICATION CORRECTION Z:REMARKS CHANGE

December 30, 2007



PARTS CATALOG NEWS

Honda Motor Co., Ltd. Service Division

PARTS CATALOG - CORRECTED

Printed in Japan

CODE NO.	14Z1V501
PARTS CATALOG NEWS	GXV160H2
NEWS NO.	023

Block No.	Ref. No.	Note	Part No.	Description	Reqd. QTY	Serial No.	Parts catalog code
E-14	21	T	99101-ZH8-0650	JET, MAIN, #65	GXV 160 H2 (1)	-----	N4C

NOTE A:PART NO. CHANGE D:NEWLY PROVIDED E:PART NO.DELETION K:REQUIRED NO. CORRECTION L:APPLICATION SERIAL NO. CORRECTION
T:APPLICATION CORRECTION Z:REMARKS CHANGE



PARTS CATALOG NEWS

Honda Motor Co., Ltd. Service Division

PARTS CATALOG - CORRECTED

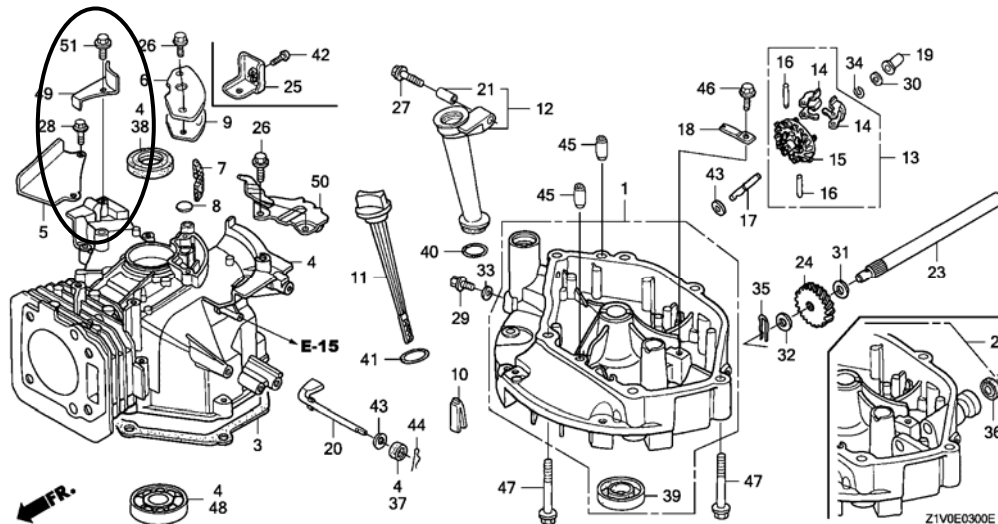
Printed in Japan

CODE NO.	14Z1V501
PARTS CATALOG NEWS	GXV160H2
NEWS NO.	024

Block No.	Ref. No.	Note	Part No.	Description	Reqd. QTY GXV 160 H2	Serial No.	Parts catalog code
-----------	----------	------	----------	-------------	-------------------------------	------------	--------------------

E-3 CYLINDER BARREL

ILLUSTRATION CORRECTED



NOTE A:PART NO. CHANGE D:NEWLY PROVIDED E:PART NO.DELETION K:REQUIRED NO. CORRECTION L:APPLICATION SERIAL NO. CORRECTION
T:APPLICATION CORRECTION Z:REMARKS CHANGE

March 09, 2008



PARTS CATALOG NEWS

Honda Motor Co., Ltd. Service Division

PARTS CATALOG - CORRECTED

Printed in Japan

CODE NO.	14Z1V501
PARTS CATALOG NEWS	GXV160H2
NEWS NO.	025

Block No.	Ref. No.	Note	Part No.	Description	Reqd. QTY	Serial No.	Parts catalog code
E-3	24	Z	23421-ZE6-000	GEAR, DRIVEN (22T)	1	-----	N6S, SFC, SFL, SFL1, SFY1

PARTS NAME CORRECTED

NOTE A:PART NO. CHANGE D:NEWLY PROVIDED E:PART NO.DELETION K:REQUIRED NO. CORRECTION L:APPLICATION SERIAL NO. CORRECTION
T:APPLICATION CORRECTION Z:REMARKS CHANGE



PARTS CATALOG NEWS

Honda Motor Co., Ltd. Service Division

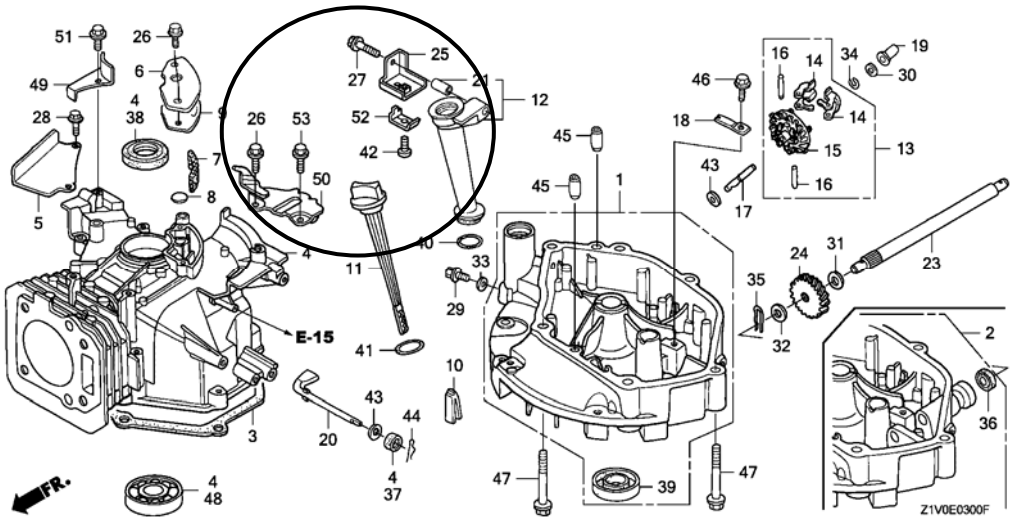
PARTS CATALOG - CORRECTED

Printed in Japan

CODE NO.	14Z1V501
PARTS CATALOG NEWS	GXV160H2
NEWS NO.	026

Block No.	Ref. No.	Note	Part No.	Description	Reqd. QTY	Serial No.	Parts catalog code
					GXV 160 H2		

E-3 CYLINDER BARREL



E-3	26	K	90014-952-000	BOLT, FLANGE, 6X14(CT200)	3		
	52	D	16576-891-000	HOLDER, CABLE	1	-----	A1S, A1SA, A14, C12, C14, SFC

NOTE A:PART NO. CHANGE D:NEWLY PROVIDED E:PART NO.DELETION K:REQUIRED NO. CORRECTION L:APPLICATION SERIAL NO. CORRECTION
T:APPLICATION CORRECTION Z:REMARKS CHANGE

PARTS CATALOG NEWS

BOOKNo. : 14Z1V501

Block No.	Ref. No.	Note	Part No.	Description	Reqd. QTY	Serial No.	Parts catalog code
	53	D	90014-952-000	BOLT, FLANGE, 6X14 (CT200)	1	-----	A1S, N1, N1F, N15, N4, N4C, N45, N5, N5M, N55, N6, N6S, N6W, SFL, SFL1 SFY, SFY1, T1AH

NOTE A:PART NO. CHANGE D:NEWLY PROVIDED E:PART NO.DELETION K:REQUIRED NO. CORRECTION L:APPLICATION SERIAL NO. CORRECTION
T:APPLICATION CORRECTION Z:REMARKS CHANGE

September 28, 2008



PARTS CATALOG NEWS

Honda Motor Co., Ltd. Service Division

PARTS CATALOG - CORRECTED

Printed in Japan

CODE NO.	14Z1V501
PARTS CATALOG NEWS	GXV160H2
NEWS NO.	028

Block No.	Ref. No.	Note	Part No.	Description	Reqd. QTY	Serial No.	Parts catalog code
					GXV 160 H2		
E-14	9	L	16100-Z1V-003	CARBURETOR ASSY. (BE66J A) ...	1	----- 1189960	N6S
		T	16100-Z1V-801	CARBURETOR ASSY. (BE66N A) ...	1	1189961 -----	N6S
E-16	2	T	18292-ZE7-M10	PACKING, PROTECTOR	2	1003408 -----	SFL, SFL1, SFY1
E-28	4	L	87520-Z1V-000	MARK A, COMBINATION (JAPANESE)	1	----- 1000080	SFL, SFL1, SFY1
		T	87522-Z1V-000	LABEL, CAUTION	1	1000081 -----	SFL, SFL1, SFY1
		L	87526-Z1V-000	MARK B, COMBINATION (JAPANESE)	1	----- 1000080	SFL, SFL1, SFY1
		T	87114-ZH7-000	LABEL, WARNING (NOT CERTIFIED FOR SALE)	1	1075235 -----	C12, C14, N5, N6S, SFC

NOTE A:PART NO. CHANGE D:NEWLY PROVIDED E:PART NO.DELETION K:REQUIRED NO. CORRECTION L:APPLICATION SERIAL NO. CORRECTION
T:APPLICATION CORRECTION Z:REMARKS CHANGE

June 22, 2008



PARTS CATALOG NEWS

Honda Motor Co., Ltd. Service Division

PARTS CATALOG - CORRECTED

Printed in Japan

CODE NO.	14Z1V501
PARTS CATALOG NEWS	GXV160H2
NEWS NO.	027

Block No.	Ref. No.	Note	Part No.	Description	Reqd. QTY	Serial No.	Parts catalog code
E-14	21	T	99101-ZH8-0600	JET, MAIN, #60	0	-----	N4C

NOTE A:PART NO. CHANGE D:NEWLY PROVIDED E:PART NO.DELETION K:REQUIRED NO. CORRECTION L:APPLICATION SERIAL NO. CORRECTION
T:APPLICATION CORRECTION Z:REMARKS CHANGE



PARTS CATALOG NEWS

Honda Motor Co., Ltd. Service Division

PARTS CATALOG - CORRECTED

Printed in Japan

CODE NO.	14Z1V501
PARTS CATALOG NEWS	GXV160H2
NEWS NO.	029

Block No.	Ref. No.	Note	Part No.	Description	Reqd. QTY GXV 160 H2	Serial No.	Parts catalog code
E-22	21	L	90659-680-013	CLIP, WIRE HARNESS	1	----- 1446686	N4C, N5, N6, N6S, N6W, SFC
		D	90659-Z1V-003	CLIP, HARNESS	1	1446687 -----	N4C, N5, N6, N6S, N6W, SFC
	28	L	46392-SC2-003	CLAMP, BRAKE PIPE (GRAY)	1	----- 1446521	N4C, N5, N6, N6S, N6W
		D	46392-Z1V-003	CLAMP, HARNESS	1	1446522 -----	N4C, N5, N6, N6S, N6W
E-22-1	21	L	90659-680-013	CLIP, WIRE HARNESS	1	----- 1446686	C14
		D	90659-Z1V-003	CLIP, HARNESS	1	1446687 -----	C14

NOTE A:PART NO. CHANGE D:NEWLY PROVIDED E:PART NO.DELETION K:REQUIRED NO. CORRECTION L:APPLICATION SERIAL NO. CORRECTION
T:APPLICATION CORRECTION Z:REMARKS CHANGE

November 24, 2008



PARTS CATALOG NEWS

Honda Motor Co., Ltd. Service Division

PARTS CATALOG - CORRECTED

Printed in Japan

CODE NO.	14Z1V501
PARTS CATALOG NEWS	GXV160H2
NEWS NO.	030

Block No.	Ref. No.	Note	Part No.	Description	Reqd. QTY	Serial No.	Parts catalog code
E-2	5	L	12251-ZE7-000	GASKET, CYLINDER HEAD	1	----- 1453288	C12, C14, N4C, N5, N6, N6S, N6W, SFC
		D	12251-Z1V-003	1	1453289 -----	C12, C14, N4C, N5, N6, N6S, N6W, SFC

NOTE A:PART NO. CHANGE D:NEWLY PROVIDED E:PART NO.DELETION K:REQUIRED NO. CORRECTION L:APPLICATION SERIAL NO. CORRECTION
T:APPLICATION CORRECTION Z:REMARKS CHANGE

May 24, 2009



PARTS CATALOG NEWS

Honda Motor Co., Ltd. Service Division

PARTS CATALOG - CORRECTED

Printed in Japan

CODE NO.	14Z1V501
PARTS CATALOG NEWS	GXV160H2
NEWS NO.	031

Block No.	Ref. No.	Note	Part No.	Description	Reqd. QTY	Serial No.	Parts catalog code
E-17	15	L	90010-GEO-710	CLIP, TUBE	1	----- 1494275	C12, C14, SFC
		D	90010-Z1V-800	1	1494276 -----	C12, C14, SFC

NOTE A:PART NO. CHANGE D:NEWLY PROVIDED E:PART NO.DELETION K:REQUIRED NO. CORRECTION L:APPLICATION SERIAL NO. CORRECTION
T:APPLICATION CORRECTION Z:REMARKS CHANGE

July 19, 2009



PARTS CATALOG NEWS

Honda Motor Co., Ltd. Service Division

PARTS CATALOG - CORRECTED

Printed in Japan

CODE NO.	14Z1V501
PARTS CATALOG NEWS	GXV160H2
NEWS NO.	032

Block No.	Ref. No.	Note	Part No.	Description	Reqd. QTY	Serial No.	Parts catalog code
					GXV 160 H2		
E-11-1	1	L	28400-Z1V-003ZB	STARTER ASSY., RECOIL *R280*..... POWER RED	1	----- 1510263	N4C, N6W
					1	1113863 1510263	C12, C14, N5, N6, N6S, SFC
		D	28400-Z1V-013ZB	*R280*..... POWER RED	1	1510264 -----	C12, C14, N4C, N5, N6, N6S, N6W, SFC
	11	L	28461-ZH8-003	GRIP, STARTER	1	----- 1510263	N4C, N6W
					1	1113863 1510263	C12, C14, N5, N6, N6S, SFC
	D	28461-ZH8-013	1	1510264 -----	C12, C14, N4C, N5, N6, N6S, N6W, SFC	

NOTE A:PART NO. CHANGE D:NEWLY PROVIDED E:PART NO.DELETION K:REQUIRED NO. CORRECTION L:APPLICATION SERIAL NO. CORRECTION
T:APPLICATION CORRECTION Z:REMARKS CHANGE

January 21, 2012



PARTS CATALOG NEWS

Honda Motor Co., Ltd.
Customer Service Technology Development Division

PARTS CATALOG - CORRECTED

Printed in Japan

CODE NO.	14Z1V501
PARTS CATALOG NEWS	GXV160H2
NEWS NO.	033

Block No.	Ref. No.	Note	Part No.	Description	Reqd. QTY	Serial No.	Parts catalog code
					GXV 160 H2		
E-19	5	L	31110-Z1V-810	FLYWHEEL COMP. (BRAKE).....	1	----- 1770423	N4C, N5, N6, N6W
		T	31110-Z1V-811	FLYWHEEL COMP.	1	1770424 -----	N4C, N5, N6, N6W
E-19-1	3	L	31110-Z1V-810	FLYWHEEL COMP. (BRAKE).....	1	----- 1770423	C12, C14, SFC
		T	31110-Z1V-811	FLYWHEEL COMP.	1	1770424 -----	C12, C14, SFC

NOTE A:PART NO. CHANGE D:NEWLY PROVIDED E:PART NO.DELETION K:REQUIRED NO. CORRECTION L:APPLICATION SERIAL NO. CORRECTION
T:APPLICATION CORRECTION Z:REMARKS CHANGE

August 17, 2012



PARTS CATALOG NEWS

Honda Motor Co., Ltd.
Customer Service Technology Development Division

PARTS CATALOG - CORRECTED

Printed in Japan

CODE NO.	14Z1V501
PARTS CATALOG NEWS	GXV160H2
NEWS NO.	034

Block No.	Ref. No.	Note	Part No.	Description	Reqd. QTY		Serial No.	Parts catalog code
E-2	5	D	12251-Z1V-701	GASKET, CYLINDER HEAD.	1			A1N5, C12, C14, N1F5, N4C, N4N5, N5, N6, N6W, SFC, SFE, SFE1 SFE4, SFJ, SFN1
	7	D	12312-Z1V-701	PACKING, HEAD COVER.	1			A1N5, C12, C14, N1F5, N4C, N4N5, N5, N6, N6W, SFC, SFE, SFE1 SFE4, SFJ, SFN1
E-3	3	D	11381-Z1V-701	PACKING, OIL PAN.	1			A1N5, C12, C14, N1F5, N4C, N4N5, N5, N6, N6W, SFC, SFE, SFE1 SFE4, SFJ, SFN1
E-7	1	D	13010-Z1T-701	RING SET, PISTON (STD.)	1			A1N5, C12, C14, N1F5, N4C, N4N5, N5, N6, N6W, SFC, SFE, SFE1 SFE4, SFJ, SFN1
		D	13011-Z1T-701	RING SET, PISTON (0.25)	(1)			A1N5, C12, C14, N1F5, N4C, N4N5, N5, N6, N6W, SFC, SFE, SFE1 SFE4, SFJ, SFN1
		D	13012-Z1T-701	RING SET, PISTON (0.50)	(1)			A1N5, C12, C14, N1F5, N4C, N4N5, N5, N6, N6W, SFC, SFE, SFE1 SFE4, SFJ, SFN1
		D	13013-Z1T-701	RING SET, PISTON (0.75)	(1)			A1N5, C12, C14, N1F5, N4C, N4N5, N5, N6, N6W, SFC, SFE, SFE1 SFE4, SFJ, SFN1
E-14	13	D	16212-Z1V-701	PACKING, INSULATOR.	1			A1N5, C12, C14, N1F5, N4C, N4N5, N5, N6, N6W, SFC, SFE, SFE1 SFE4, SFJ, SFN1
	15	D	16221-Z1V-701	PACKING, CARBURETOR.	1			A1N5, C12, C14, N1F5, N4C, N4N5, N5, N6, N6W, SFC, SFE, SFE1 SFE4, SFJ, SFN1

NOTE A:PART NO. CHANGE D:NEWLY PROVIDED E:PART NO. DELETION K:REQUIRED NO. CORRECTION L:APPLICATION SERIAL NO. CORRECTION
M:PART DESCRIPTION CORRECTION T:APPLICATION CORRECTION Z:REMARKS CHANGE

PARTS CATALOG NEWS

BOOKNo. : 14Z1V501

Block No.	Ref. No.	Note	Part No.	Description	Reqd. QTY	Serial No.		Parts catalog code
					GXV 160 H2			
E-16	6	D	18382-Z1V-701	GASKET, MUFFLER.....	1	-----	-----	SFJ

NOTE A:PART NO. CHANGE D:NEWLY PROVIDED E:PART NO.DELETION K:REQUIRED NO. CORRECTION L:APPLICATION SERIAL NO. CORRECTION
M:PART DESCRIPTION CORRECTION T:APPLICATION CORRECTION Z:REMARKS CHANGE