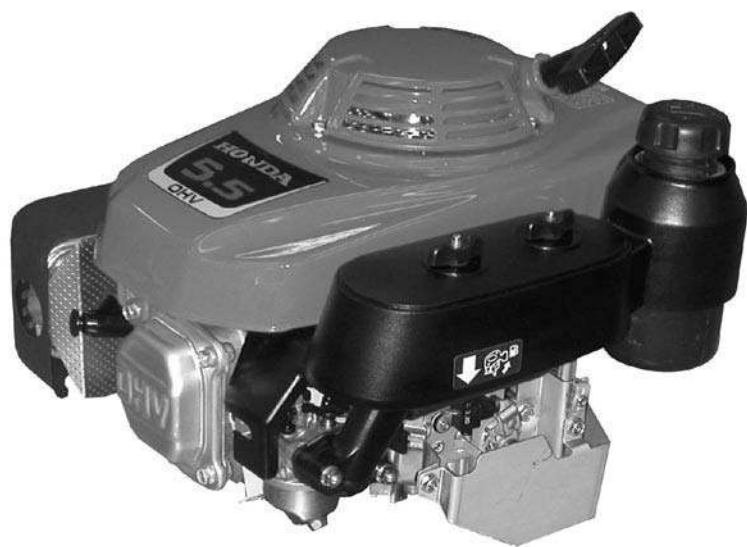


GENERAL PURPOSE ENGINE

GXV160H2

PARTS CATALOGUE

2



GXV160H2

FOREWORD INDEX

1

ENGINE GROUP

2

PART NUMBER INDEX

3

PART NAME INDEX

4

Instruction for use of parts catalogue

- **This parts catalogue was prepared based on the latest information available as of November 10, 2005.**
 - See the parts catalogue news for any revision that is made after November 10, 2005.
- **Always specify the part number when ordering a part.**
 - Check the model, type, serial numbers, color, maker, and the size as needed before ordering a part.
 - Note that the illustrations (part drawings) can differ from the actual parts in shape. They are given just to help you to refer to the parts.
- **When modifications or additions to this parts catalogue are made, a revised edition will be issued at an appropriate time, with successively progressing revision numbers on the cover. We recommend obtaining such revisions in order to keep your parts catalogue up-to-date at all times. To check whether a parts catalogue revision has been issued, please contact your Honda distributor.**

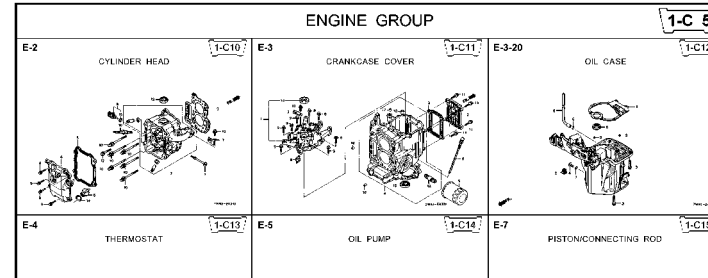
Initial version issue date August 10, 2003
Honda Motor Co., Ltd.

CONTENTS

	Page	Address No.	
● Instruction for use of parts catalogue	1	B 1	1
● How to refer to the part information	2	B 2	
● Part catalogue structure	3	B 3	
● When the parts were revised	4	B 4	
● Abbreviations used in the parts catalogue	4	B 4	
● How to check the part block and serial numbers	5	B 5	
● Models, parts catalogue codes and applicable serial numbers	6	B 6	
● Features of each type	7	B 7	
● Fuel hose, general purpose hoses and vinyl hose	9	B 9	
● FLAT RATE SERVICE TIME	10	B10	
● Illustrated index	15	B15	
● ENGINE GROUP	17	C 1	2
● PART NO. INDEX	42	E 1	3
● PART NAME INDEX	44	F 1	4

How to refer to the part information

A Reference with "Illustrated index"



B Reference with "Part number index"

PART NO. INDEX

Part Number	Address	Page	Rel.	Part Number	Address	Page
06000				15212-ZW9-000	1-C14	3C
06316-ZW9-000	1-69	88	1	15220-ZW9-003	1-C14	3C
11000				15332-ZW9-000	1-E8	5E
11300-ZW9-405	1-C11	27	1	15352-ZW9-A30	1-E11	5E
11300-ZW9-406	1-C11	27	1	15400-PFB-004	1-C11	27
11340-ZW9-000	1-C11	27	2	15422-ZW9-000	1-C14	3C
11342-ZW9-000	1-C11	27	3	15473-881-000	1-C14	3C
11381-ZW9-003	1-C12	28	1	15474-ZW9-000	1-C14	3C
				15611-921-000	1-C10	2E
				15655-ZW9-000	1-C11	27
12000				16000		
12000-ZW9-405ZA	1-C11	27	4	16010-ZV4-005	1-D4	3E
12155-ZV4-A00	1-C13	29	1	16011-ZV4-005	1-D4	3E
12166-ZW9-000	1-C10	26	1	16013-ZW9-003	1-D4	3E
12209-GB4-681	1-C16	32	1	16016-ZW9-003	1-D4	3E
12210-ZW9-405ZA	1-C10	26	2	16016-ZW9-721	1-D4	3E
12216-ZE2-300	1-E8	58	1	16023-ZW9-003	1-D4	3E
	1-E11	58	1	16024-ZV4-650	1-D4	3E
				16028-ZV4-650	1-D4	3E

C Reference with "Part name index"

PART NAME INDEX

Part name	Address	Page	Ref.
[A]			
ABSORBER , FUEL	1-E15	62	5
ARMATURE COMP.	1-D11	43	7
ARM COMP. , LINK JOINT	1-G6	85	18
ARM COMP. , SHIFT LINK	1-G6	85	14
ARM COMP. , TILT	1-F15	79	20
ARM , FUEL PUMP ROCKER	1-C16	32	4
ARM , REVERSE LOCK	1-F15	79	18
ARM , SHIFT LINK	1-F11	74	7
ARM , STOPPER	1-D1	33	12
ARM , THROTTLE REMOTE	1-F11	74	6
ARM , VALVE ROCKER	1-C16	32	3
[B]			
BAG , TOOL , 160MM	1-G5	84	10
BAND	1-G6	86	37
BAND B1 , WIRE	1-F6	69	1
BAND , CORD	1-F3	67	18
BAND , TUBE CLIP , 11MM	1-E15	63	20
BAND , TUBE CLIP , 12.5MM	1-E15	63	19

Address No. 1-C10

E-2 CYLINDER HEAD

Block No.

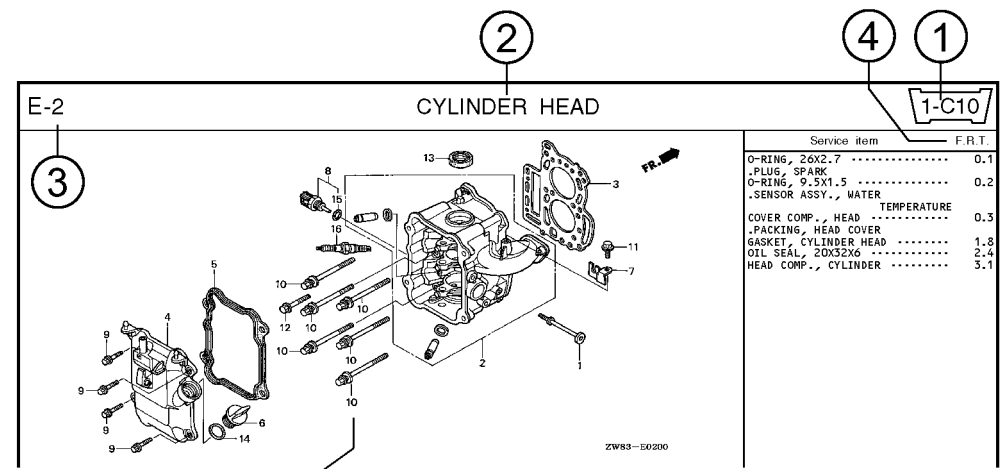
Ref No.

Ref. No.	Part No.	Description	Reqd. QTY						Serial No.	Parts catalogue code
			9.901	9.901	10D1	10D1	10B1	10B1		
1	12166-ZW9-000	STOPPER, ENGINE SIDE	2	2	2	2	2			
2	12210-ZW9-000ZA	HEAD COMP., CYLINDER	1	1	1	1	1			
3	12251-ZW9-003	GASKET, CYLINDER HEAD	1	1	1	1	1			
4	12310-ZW9-000	COVER COMP., HEAD	1	1	1	1	1			
5	12312-ZW9-000	PACKING, HEAD COVER	1	1	1	1	1			
6	15611-921-000	CAP, OIL (NO GAUGE)	1	1	1	1	1			
7	16617-ZW9-000	HOLDER, CABLE	1	1	1	1	1	SC, S6		
	16617-ZW9-010		1	1	1	1	1	1001800	LHC, LHD	
			1	1	1	1	1	1001801	LHC, LHD	
8	35673-ZW5-003	SENSOR ASSY., WATER	1	1	1	1	1			
9	90003-ZW9-000	BOLT, FLANGE, 6X22	4	4	4	4	4			
10	90007-ZW9-003	BOLT, FLANGE, 8X83	6	6	6	6	6			
11	90011-ZW9-000	BOLT, FLANGE, 6X14 (CT200)	1	1	1	1	1			
12	90200-ZW9-000	BOLT, FLANGE, 8X40	2	2	2	2	2			
13	91202-KJ9-003	OIL SEAL, 20X32X6	1	1	1	1	1			
14	91301-805-000	O-RING, 26X2.7	1	1	1	1	1			
15	91307-PK2-005	O-RING, 9.5X1.5 (HONDA KIKAKI)	1	1	1	1	1			
16	98059-55916	PLUG, SPARK (CR5EH-9)	2	2	2	2	2			
	98059-55926	PLUG, SPARK (U16FER9)	2	2	2	2	2			

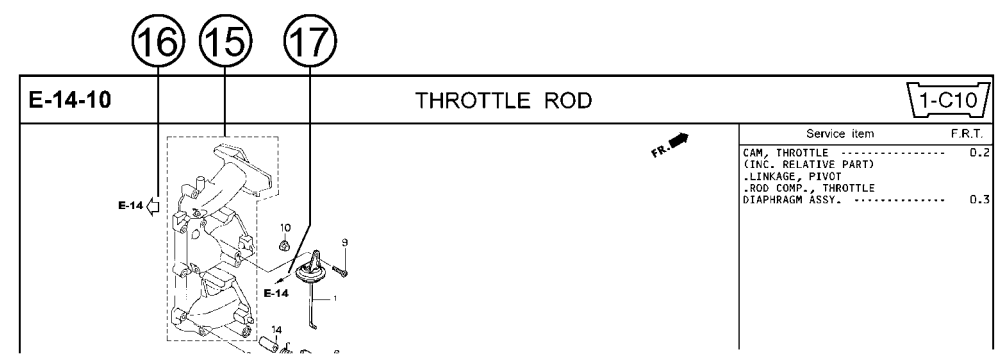
2000.09.20 E

Page No.

Part catalogue structure



Ref. No.	Part No.	Description	Reqd. QTY						Serial No.	Parts catalogue code
			BF 9/9D1	BFP 9/9D1	BF 10D1	BFP 10D1	BF 10B1	BFP 10B1		
1	12166-ZW9-000	STOPPER, ENGINE SIDE	2	2	2	2	2	2		
2	12210-ZW9-000ZA	HEAD COMP., CYLINDER *NH8*	1	1	1	1	1	1		
3	12251-ZW9-003	GASKET, CYLINDER HEAD	1	1	1	1	1	1		
4	12310-ZW9-000	COVER COMP., HEAD	1	1	1	1	1	1		
5	12312-ZW9-000	PACKING, HEAD COVER	1	1	1	1	1	1		
6	15611-921-000	CAP, OIL (NO GAUGE)	1	1	1	1	1	1		
7	16617-ZW9-000	HOLDER, CABLE	1	1	1	1	1	1	----- SC,S6	
	16617-ZW9-010		1	1	1	1	1	1	----- 1001800 LHC,LHD	



- ① **Address number**
 - Address No. is provided (in place of the page No.) to help you refer to the part with the part No. or part name.
- ② **Block title** ③ **Block number**
- ④ **Service item/Flat rate time**
- ⑤ **Reference number**
 - Title number marked with the parenthesis or parentheses indicates that it continues from the previous page.
- ⑥ **Part number** ⑦ **Honda color code**
- ⑧ **Description**
- ⑨ **Assemblies**
 - Sections framed with broken lines in the exploded view drawings are available as complete assemblies. (Their individual parts can also be obtained.)
- ⑩ **Color description**
- ⑪ **Note**
 - Notes are shown with the parentheses in the part name column.
- ⑫ **Required quantity**
 - Required QTY shown in the parenthesis or parentheses indicates the optional part.
 - Required QTY marked with "N" Indicates the optional part that should be selected as needed.
 - Required QTY indicates the number of the part used in the block.
- ⑬ **Serial number**
- ⑭ **Type**
 - When the type column is blank, it indicates that the part is applicable to all types.
 - As the type of the actual unit may differ from the "parts catalogue, type" please refer to "Models, types and applicable serial numbers" for confirmation.
- ⑮ **[Dotted box]**
 - Parts enclosed within a dotted line [] are covered in a different block.
- ⑯ **[Hollow arrow]**
 - A hollow arrow [] indicates the block No. for the parts enclosed within a dotted line [] .
- ⑰ **[Solid arrow]**
 - A solid arrow [] indicates the block No. the part in question is connected to.

When the parts were revised

Abbreviations used in the parts catalogue

1



Be sure to check the serial number!!



Ref. No.	Part No.	Description	Reqd. QTY						Serial No.
			BF 99D1	BFP 9.9D1	BF 10D1	BFP 10D1	BF 10B1	BFP 10B1	
1	12166-ZW9-000	STOPPER, ENGINE SIDE	2	2	2	2	2	2	
2	12210-ZW9-000ZA	HEAD COMP., CYLINDER *NH8*.....DARK GRAY	1	1	1	1	1	1	
3	12251-ZW9-003	GASKET, CYLINDER HEAD	1	1	1	1	1	1	
4	12310-ZW9-000	COVER COMP., HEAD	1	1	1	1	1	1	
5	12312-ZW9-000	PACKING, HEAD COVER	1	1	1	1	1	1	
6	15611-921-000	CAP, OIL (NO GAUGE)	1	1	1	1	1	1	
7	16617-ZW9-000	HOLDER, CABLE (###).....	1	1	1	1	1	1	
	16617-ZW9-010	1	1	1	1	1	1	

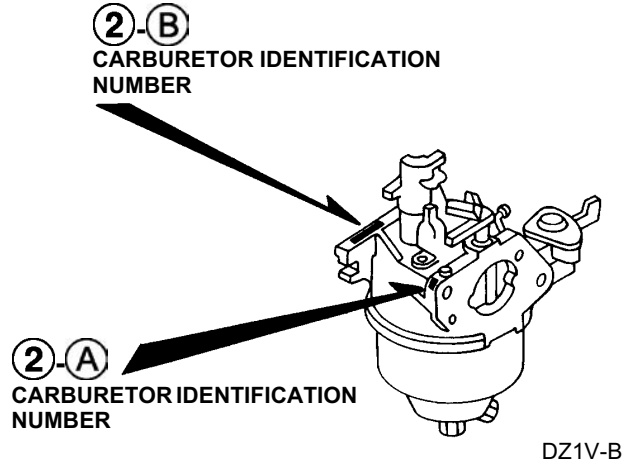
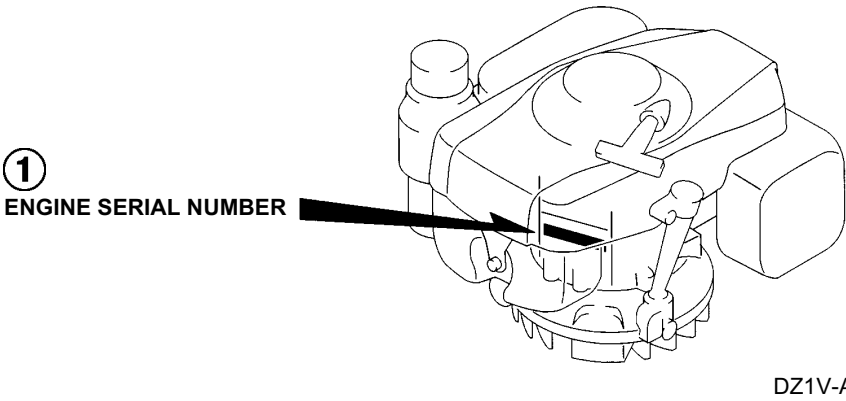
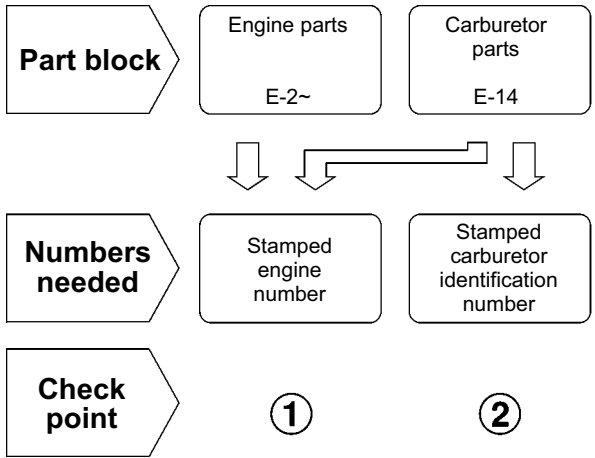
The number has been used from the initial model without revision. When shown at the left side, it is applicable to the models of No.1001801 and the subsequent numbers. When shown at the right side, it is applicable to the models up to No.1001800.

• The parts listed with "###" at the end of the parts name have limited supply period (parts not for sale).

• The following abbreviations are used in the parts name column.

- | | |
|--|-----------------------------|
| A Ampere | FR.Front |
| A.C. Alternating current | IN.Inlet |
| ASSY. Assembly | L (100L) .Link (100 Links) |
| AT. Automatic transmission | L.Left |
| C.D.I. Capacitive discharge ignition | MMMillimeter |
| COMP. ... Complete | MT.Manual Transmission |
| D.C. Direct current | P.T.O.Power take off |
| EX. Exhaust | R.Right |
| G.F.C.I ... Ground fault circuit interruptor | RR.Rear |
| HEX. Hexagonal | STD.Standard |
| H.S.T. Hydrostatic transmission | T (22T) ...Tooth (22 Teeth) |
| | VVolt |
| | WWatt |

How to check the part block and serial numbers



Models, parts catalogue codes and applicable serial numbers

- Models, parts catalogue codes and applicable serial Nos. given in this parts catalogue can be identified as follows.

Model	Type	Parts catalogue type	Applicable engine serial No.	Applicable carburetor identification No.	
GXV160H2	A1S	A1S	GJAAH-1000001~	BE66J A	
	A1SA	A1SA			
	A14	A14			
	C12	C12			
	C14	C14			
	N1	N1			
	N1F	N1F			
	N15	N15			
	N4	N4			
	N45	N45			
	N5	N5			
	N5M	N5M			BE66M A
	N55	N55			
	N6	N6			
	N6S	N6S			
	SFC	SFC		BE66J A	
	SFL	SFL			
	SFL1	SFL1			
	SFY	SFY			
	SFY1	SFY1			
T1AH	T1AH				

* Of carburetor identification numbers, only the portions underlined in the example below are used for registration.

BE 66J A KC ナ
 (A) (B)

Features of each type

- See the following table for the features of each type. (Items in brackets are optional)

Specifications		Model	GXV160H2														
		Type	A1S	A1SA	A14	C12	C14	N1	N1F	N15	N4	N45	N5	N5M	N55	N6	
Crankshaft	22mm Ø Straight															●	
	22.2mm Ø Straight	●	●	●		●	●	●	●								
	25.4mm Ø Straight (Flat key-way)										●	●					
	25.4mm Ø Straight											●		●			
	17mm Ø Stepped thread																
	20mm Ø Stepped thread				●												
	23mm Ø Tapered													●			
Flywheel brake		●	●	●	●	●											

Specifications		Model	GXV160H2						
		Type	N6S	SFC	SFL	SFL1	SFY	SFY1	T1AH
Crankshaft	22mm Ø Straight								
	22.2mm Ø Straight								
	25.4mm Ø Straight (Flat key-way)								
	25.4mm Ø Straight								
	17mm Ø Stepped thread								●
	20mm Ø Stepped thread	●	●	●	●	●	●		
	23mm Ø Tapered								
Flywheel brake			●						

Fuel hose, general purpose hoses and vinyl hose

- The standard part fuel hose, general purpose hose and vinyl hose may be substituted by the coiled bulk part.
- When ordering the standard part fuel hose, general purpose hose and vinyl hose use the bulk part number written in the parts catalog in brackets () underneath the part name.
- When exchanging the hose, cut and use at the specified length as mentioned in the part name.
(For the method of cutting the bulk part, and method of filling out orders etc., please refer to the instructions issued with the bulk part.)

Bulk part number of fuel hose, general purpose hose and vinyl hose.

Example: 9 5 0 0 1 - 7 5 0 0 1 - 5 0 M

Bulk part number:
Refers to the bulk part.

Marking code (fuel hose and general purpose hose)

Change code (Vinyl hose)

Indicates number mark or change sequence, however, the code for the bulk part must be strictly 0 (zero).

Types of code:

- | | | | | | |
|-------------|--|----------------|--|--------------|---|
| • Fuel hose | 2: Red outside braid
(3 mm inside dia. only) | • General hose | 1: Ash gray
2: Ash gray
3: Black
5: Black | • Vinyl hose | 1: Clear
2: Black
3: Light red
6: Light red
7: Pale black |
| | 5: Black inside braid | | | | |
| | 3: Red (3 mm inside dia. only) | | | | |
| | 4: Ash gray with red stripe
(3 mm inside dia. only) | | | | |
| | 6: Black | | | | |

Lengths:

- 001: 1 m (standard)
003: 3 m
008: 8 m } Application or specification of some parts is not settled.

I.D code: (fuel hose and general purpose hose)

- | | | | | |
|------------|--------------------|--------------------|-----------------------------|-----------------------------|
| 30: 3.0 mm | 50: 5.0 mm | 70: 7.0 mm | 11: 11 mm | 12: 12 (outside dia. 17) mm |
| 35: 3.5 mm | 55: 5.3 mm, 5.5 mm | 75: 7.3 mm, 7.5 mm | 91: 12 (outside dia. 15) mm | 14: 14 mm |
| 45: 4.5 mm | 65: 6.5 mm | 80: 8.0 mm | 92: 12 (outside dia. 16) mm | 17: 17 mm |

ID./OD. code: (vinyl hose)

- | | | | | |
|-------------------------|--------------------------|---------------------------|---------------------------|---------------------------|
| 01: ID. 2.9, OD. 6.8 mm | 12: ID. 5.0, OD. 7.0 mm | 21: ID. 8.0, OD. 9.0 mm | 37: ID. 11.0, OD. 15.0 mm | 50: ID. 16.0, OD. 19.0 mm |
| 03: ID. 3.0, OD. 6.0 mm | 10: ID. 5.0, OD. 8.0 mm | 23: ID. 8.0, OD. 12.0 mm | 38: ID. 12.0, OD. 13.0 mm | 55: ID. 17.5, OD. 20.5 mm |
| 05: ID. 3.5, OD. 6.5 mm | 11: ID. 5.0, OD. 9.0 mm | 25: ID. 9.0, OD. 11.0 mm | 39: ID. 12.0, OD. 14.0 mm | 60: ID. 22.0, OD. 27.0 mm |
| 07: ID. 4.0, OD. 7.0 mm | 14: ID. 6.0, OD. 9.0 mm | 27: ID. 9.0, OD. 13.0 mm | 40: ID. 12.0, OD. 16.0 mm | |
| 08: ID. 4.5, OD. 6.5 mm | 17: ID. 7.0, OD. 9.0 mm | 33: ID. 10.0, OD. 14.0 mm | 43: ID. 13.0, OD. 15.0 mm | |
| 09: ID. 4.5, OD. 8.0 mm | 19: ID. 7.0, OD. 11.0 mm | 36: ID. 11.0, OD. 13.0 mm | 45: ID. 14.0, OD. 18.0 mm | |

Hose type:

- 1: Fuel hose
3: Vinyl hose
5: General hose

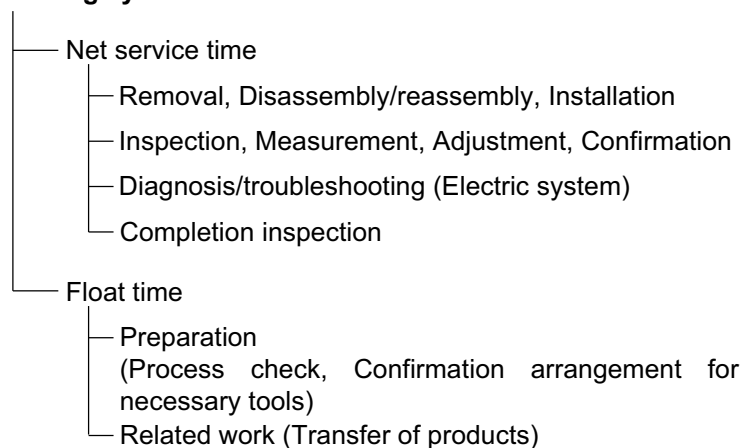
⊙ **CAUTION: It is DANGEROUS to confuse the fuel hose with the general purpose hose or vinyl hose.**

Never use a general purpose hose or vinyl hose in place of a fuel hose or vice versa. Always use the correct bulk part in the parts catalogue, according to the service manual or the instructions issued with the bulk part.

FLAT RATE SERVICE TIME

Flat rate service time (FRT) means the standard time required to service a product, which is listed in this manual to help the dealers control the actual working process and calculate the service charge by using it as a guide.

FRT setting system



* Float time is set by multiplying the net service time by a given coefficient.

Editorial style

The service items shown in the text are listed with the exchange work time for the repair sales parts as the subject. Other representative service items not using repair parts (removal/installation, adjustment, inspection/measuring, and other work) are listed collectively in the list in the preface, classified according to the work.

FRT setting standard

- Decimal system (in unit of 0.1) is adopted to set FRT as it is convenient to calculate the wage.
Example: (0.1) → 6 minutes, (0.2) → 12 minutes
[Labor cost per hour] x [FRT] = [Wage]
- FRT is set with a hand tool.
- Service items and FRT can be subject to change depending on development of tools and service equipment and improvement in service procedure.

Work procedure

- As the work procedure is set with the work time according to the method in the separate Service Manual, refer to this Manual as required.
- Work methods permitting servicing in the shortest time still permitting assurance of safe work and product warranty are used for the setting of service items not listed in the Service Manual.
- Work basically is to be performed by one person, and when two or more people are required, setting is done as the total time for the number of people.
- The set value for the technological level of the workers uses a person with three years of experience in the repair of Honda products as the standard.
- Special tools and service equipment used to set FRT are those specified or recommended in Service Manual.

Service item whose FRT is not presented

- Accessories and service parts that are not listed to use in this manual.
 - Locations with little aging deterioration or breakage during normal use.
 - Service work that can be finished by one touch.
 - Service work that is seldom done (i.e. extremely small causes of trouble and service frequency).
 - Products and parts whose location for installation differs according to its status of use and application.
- * When FRT is not presented, please calculate wages based on appropriate actual work time.

Operation not included of FRT

- Oil and coolant water draining, Waiting time for warming up operation and etc..
- Additional operation that involves removal/installation of standard exterior equipment.
- Indirect time spent for service by visiting the customer, trade-in, and delivery.
- Indirect time required for ordering and delivery of parts.
- Cost for grease, adhesive agent, etc. used for service work.

**Explanation of FRT by using an example
(The example may differ from the actual presented items)**

Ref. No.	L.O.N.	(Relative ref. Number) Description	F.R.T.
①	1111L1	(1, 3, 4, 7) VALVE, INTAKE4.1	②
②		• NOTE: OHV type	③
③	1111L1A	• Includes: Engine removal and installation One head (intake all) add1.4	④

- ① Reference No. of the illustration of part that shows location of the replacement work.
- ② FRT is an abbreviation of Flat Rate Time indicating the standard service time required for the replacement.
- ③ LON is an abbreviation of Labor Operation Number, and it is a classification of the service items by the work unit code.

The same operation code is used regardless of the models.

Standard operation is indicated with 6 digits code, and additional operation is indicated with 7 digits code.

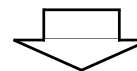
- ④ Indicating the intake valve replacement and FRT4.1.
- ⑤ Indicating FRT1.4 that will be added when additional operation (whole intake side of one cylinder head) is done in association with intake valve replacement.

- ⑥ Indicating work condition or application condition of the service item.
- ⑦ Indicating work contents that are included in the service item.
- ⑧ Indicating a reference No. whose operation and time are the same as FRT4.1 for the intake valve.

(The application range is limited to the service items without an LON setting within a same block.)

**How to refer to the service item by using the sample
(intake valve replacement)**

Open to the page of the block where the intake valve's spare part illustration is shown.



Look for the intake valve illustration, and refer to the service item and FRT that agree with the reference No.

Indication mark for the listing of service items that continues to the following page

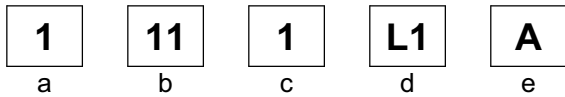
Ref. No.	L.O.N.	(Relative ref. Number) Description	F.R.T.
2	1111L1	VALVE, INTAKE	4.1
	.	.	.
	.	.	.

+
Mark indicated at the last line.

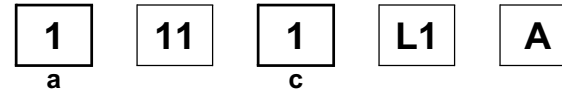
Indication of the block with no setting of FRT

Ref. No.	L.O.N.	(Relative ref. Number) Description	F.R.T.
NO INFORMATION			

• LON code system



- a) Category code..... Engine
- b) Location/function code Engine upper
- c) Operation code..... Replace
- d) Operation sequence number (Unit code can be shown with alphabet)
..... Intake valve
(No regular rule of code)
- e) Additional code One head (intake all)
(No regular rule of code)



a) Category codes and classification

Code	Category
1	Engine
2	Power drive
3	Fuel & Exhaust
4	Frame & Body
5	Steering
6	Electrical
7	Axle & Brake
8	Control system
9	-
0	Attachments

c) Operation codes and classification

Code	Operation category
1	Replace, Removal/Installation, Change
2	Overhaul
3	Adjust, Rotation
4	(Paint-related work: Top-coat)
5	Test, Inspect/diagnose, Measurement
6	(Overhaul-related work: Rebore)
7	(Overhaul-related work: Reseal)
8	(Resurface)
9	(Paint-related work: Refinish)
0	Repair, Cleaning, Air bleeding

Major service items without using spare parts

(1) Removal/Installation, (2) Adjustment, (3) Inspection/Measurement, (4) Overhaul, (5) Other work

E: Engine, T: Transmission, D: Drive system, B: Body and related parts

(1) Removal/Installation

Set with the parts configuration in the status of being removed from the product.

	LON	DESCRIPTION	FRT
E	1111L3	CYLINDER HEAD ASSEMBLY-REMOVAL/INSTALLATION	0.6

(2) Adjustment

	LON	DESCRIPTION	FRT
E	1113A1	VALVE CLEARANCE-ADJUSTMENT NOTE: For 1 product	0.4
	1163A0	CONTROL, THROTTLE/GOVERNOR-ADJUSTMENT	0.2
	3113A2	CARBURETOR IDLE-ADJUSTMENT	0.2

(3) Inspection, Measurement, Cleaning

	LON	DESCRIPTION	FRT
E	1105A0	ENGINE OIL-INSPECTION	0.1
	3120A0	AIR CLEANER-CLEANING INCLUDES: Air cleaner-inspection	0.2
	3130A0	SPARK ARRESTER-CLEANING	0.2
	6140A0	SPARK PLUG-ADJUSTMENT/CLEANING NOTE: For 1 product	0.2

(4) Overhaul

Work condition: The required Measurements, inspections, adjustments, and cleaning/washing of each part are performed, including the main body removal/installation work and the replacement of defective parts.

	LON	DESCRIPTION	FRT
E	3112A0	CARBURETOR-OVERHAUL INCLUDES: All necessary adjustment	0.6

(5) Other work

	LON	DESCRIPTION	FRT
E	1101E1	ENGINE OIL-CHANGE INCLUDES: Engine oil-inspection	0.1

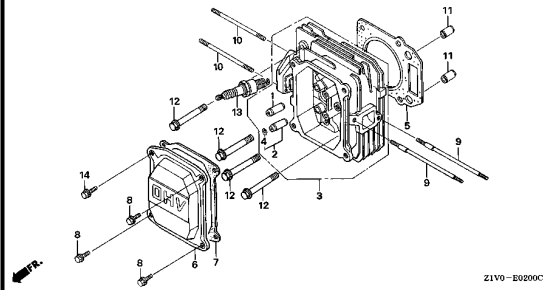
ENGINE GROUP

B15

E-2

CYLINDER HEAD

C 1

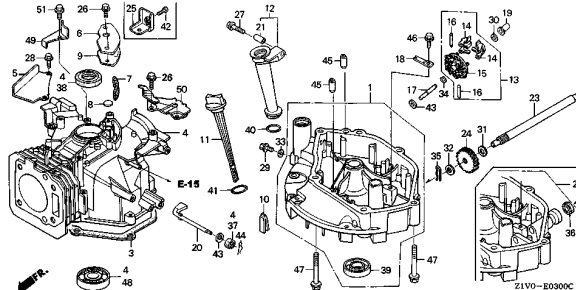


Z1V0-E0290C

E-3

CYLINDER BARREL

C 2

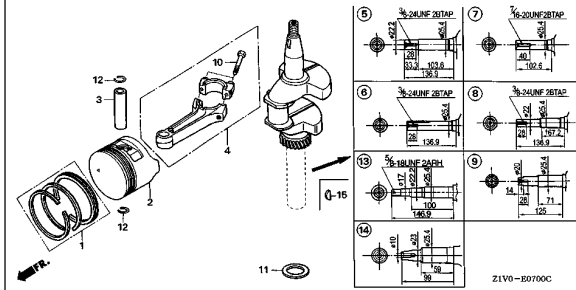


Z1V0-E0300C

E-7

CRANKSHAFT/PISTON

C 4

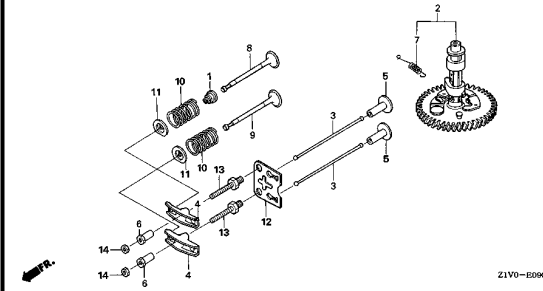


Z1V0-E0700C

E-9

CAMSHAFT

C 6

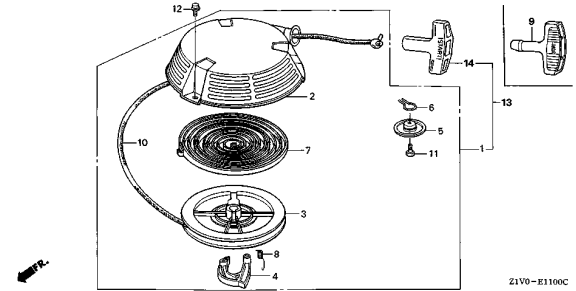


Z1V0-E0900A

E-11

RECOIL STARTER(1)

C 8

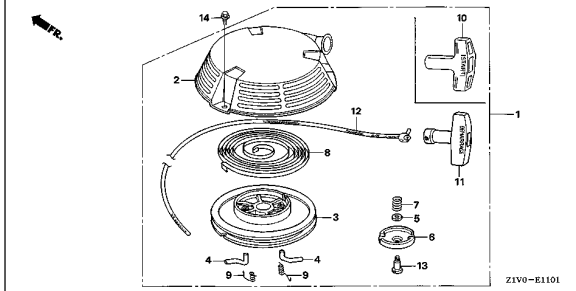


Z1V0-E1100C

E-11-1

RECOIL STARTER(2)

C10

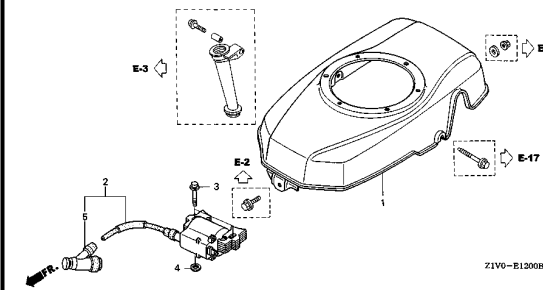


Z1V0-E1101

E-12

FAN COVER

C12

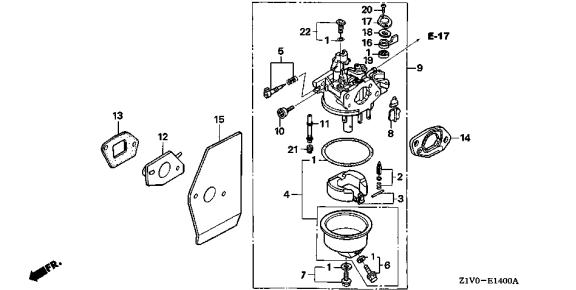


Z1V0-E1200B

E-14

CARBURETOR

C13

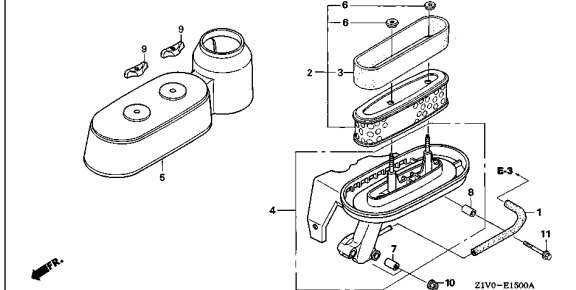


Z1V0-E1400A

E-15

AIR CLEANER

C15



Z1V0-E1500A

2

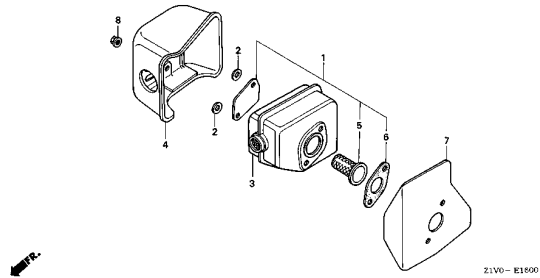
ENGINE GROUP

B16

E-16

MUFFLER

C16

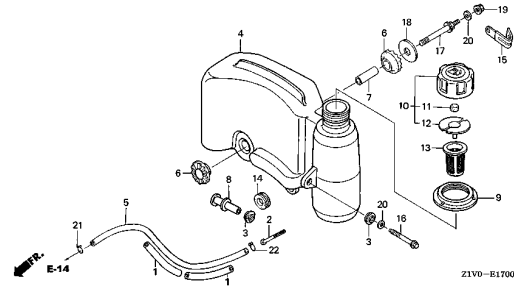


Z1V0-E1800

E-17

FUEL TANK

D 1

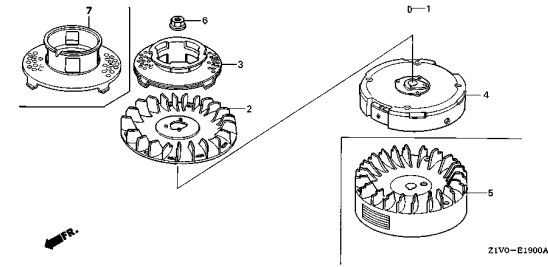


Z1V0-E1700B

E-19

FLYWHEEL(1)

D 2

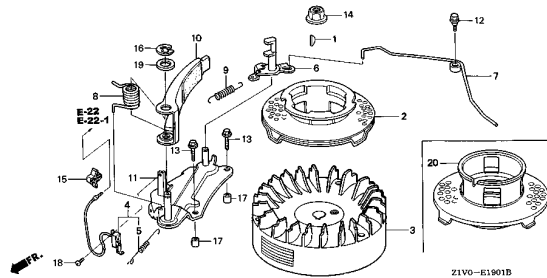


Z1V0-E1900A

E-19-1

FLYWHEEL(2)

D 3

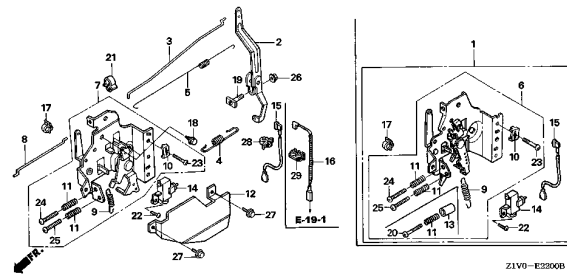


Z1V0-E1901B

E-22

CONTROL(1)

D 4

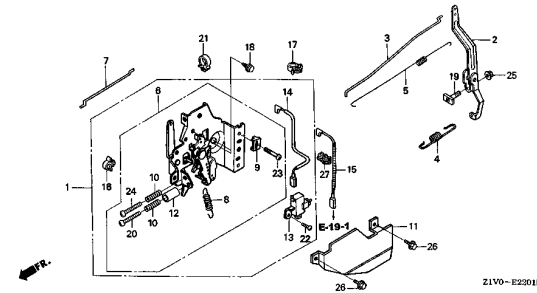


Z1V0-E2200B

E-22-1

CONTROL(2)

D 6

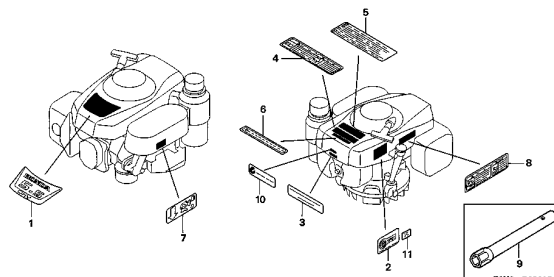


Z1V0-E2201B

E-28

LABEL/TOOL

D 8

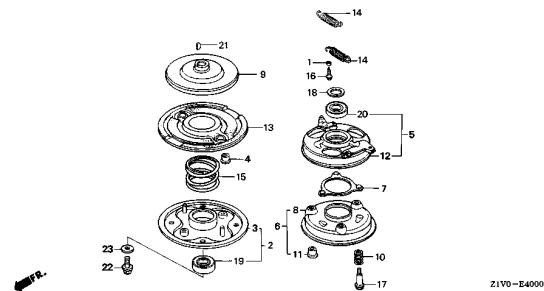


Z1V0-E2800B

E-40

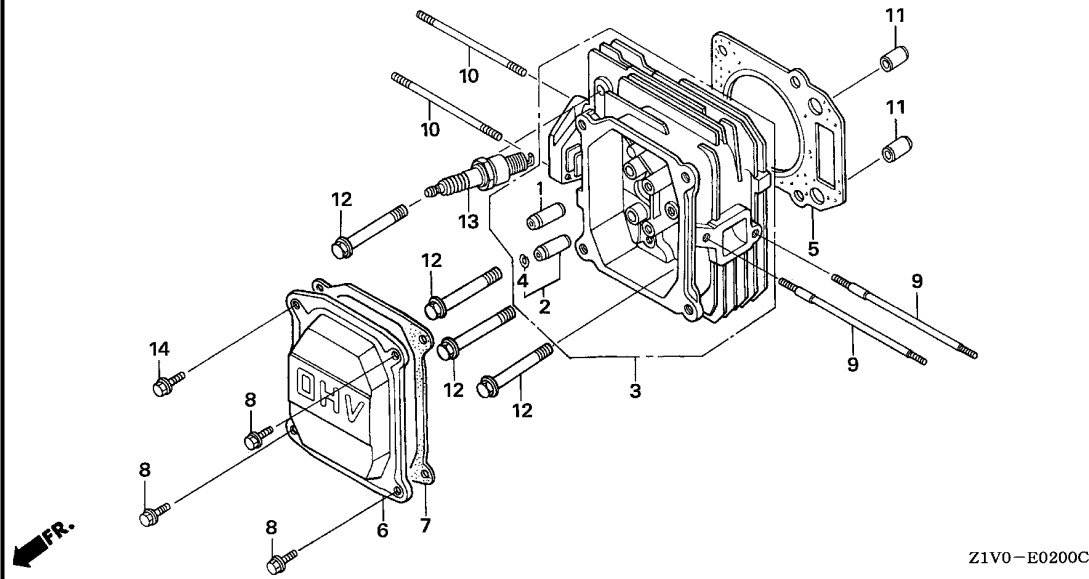
BLADE HOLDER

D 9



Z1V0-E4000A

2



Ref. No.	L.O.N.	(Relative ref. Number) Description	F.R.T.
1	1111E9	GUIDE, INTAKE VALVEINCLUDES: Valve clearance adjustment	0.8
	1111E9E	.Replace intake and exhaust all add	0.2
2	1111E8	GUIDE, EXHAUST VALVEINCLUDES: Valve clearance adjustment	0.8
	1111E8E	.Replace intake and exhaust all add	0.2
3	1111N3	HEAD, CYLINDERINCLUDES: Valve clearance adjustment and reface	1.0
5	1111N4	GASKET, CYLINDER HEAD	0.6
6	1111D5	COVER, CYLINDER HEAD AND/OR PACKING, HEAD COVER	0.1
13	6141C1	PLUG, SPARKINCLUDES: Spark plug check	0.1

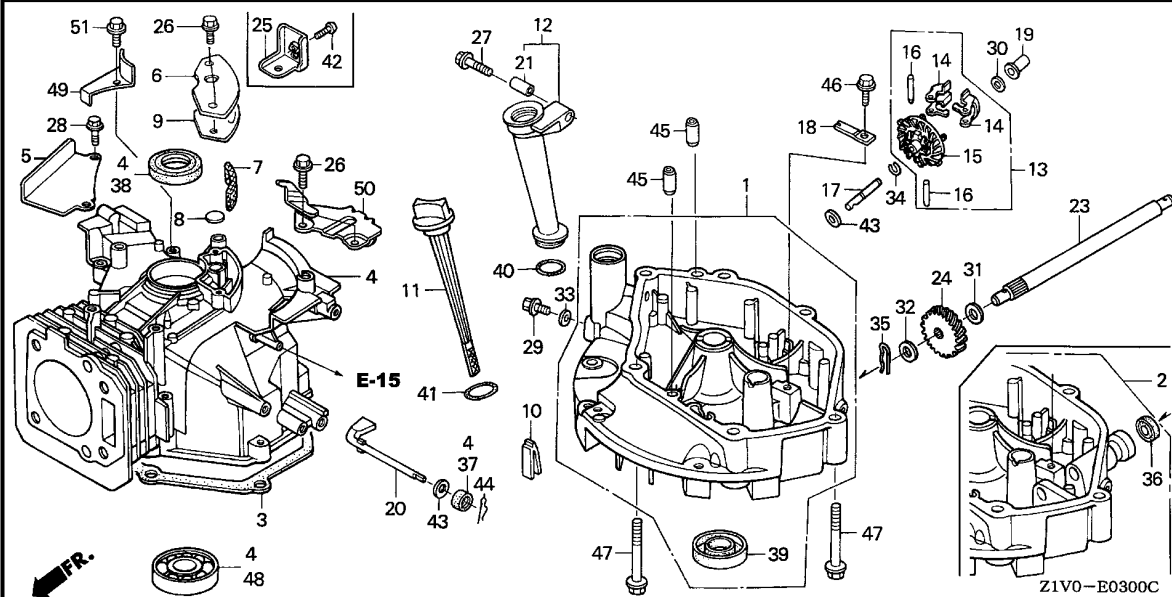
Ref. No.	Part No.	Description	Reqd. QTY	Serial No.	Parts catalogue code
			GXV 160 H2		
1	12204-ZE1-306	GUIDE, IN. VALVE (O.S.)	1		
2	12205-ZE1-315	GUIDE, EX. VALVE (O.S.)	1		
3	12210-Z1V-000	HEAD COMP., CYLINDER	1		
4	12216-ZE5-300	CLIP, VALVE GUIDE	1		
5	12251-ZE7-000	GASKET, CYLINDER HEAD	1		
6	12311-ZG9-800	COVER, HEAD	1		
7	12391-ZE7-M10	PACKING, HEAD COVER	1		
8	90013-883-000	BOLT, FLANGE, 6X12(CT200) ...	3		
9	90043-ZE6-000	BOLT, STUD, 6X109	2		
10	90048-ZC3-000	BOLT, STUD, 6X85	2		
11	94301-10160	DOWEL PIN, 10X16	2		
12	95701-08050-00	BOLT, FLANGE, 8X50	4		
13	98079-54846	PLUG, SPARK (BPR4ES)(NGK) ...	(1)		
	98079-54855	PLUG, SPARK (W14EPR-U)(DENSO)	(1)		
	98079-55846	PLUG, SPARK (BPR5ES)(NGK) ...	1		
	98079-55855	PLUG, SPARK (W16EPR-U)(DENSO)	1		
	98079-56846	PLUG, SPARK (BPR6ES)(NGK) ...	(1)		
	98079-56855	PLUG, SPARK (W20EPR-U)(DENSO)	(1)		
14	90014-952-000	BOLT, FLANGE, 6X14(CT200) ...	1		



E-3

CYLINDER BARREL

C 2

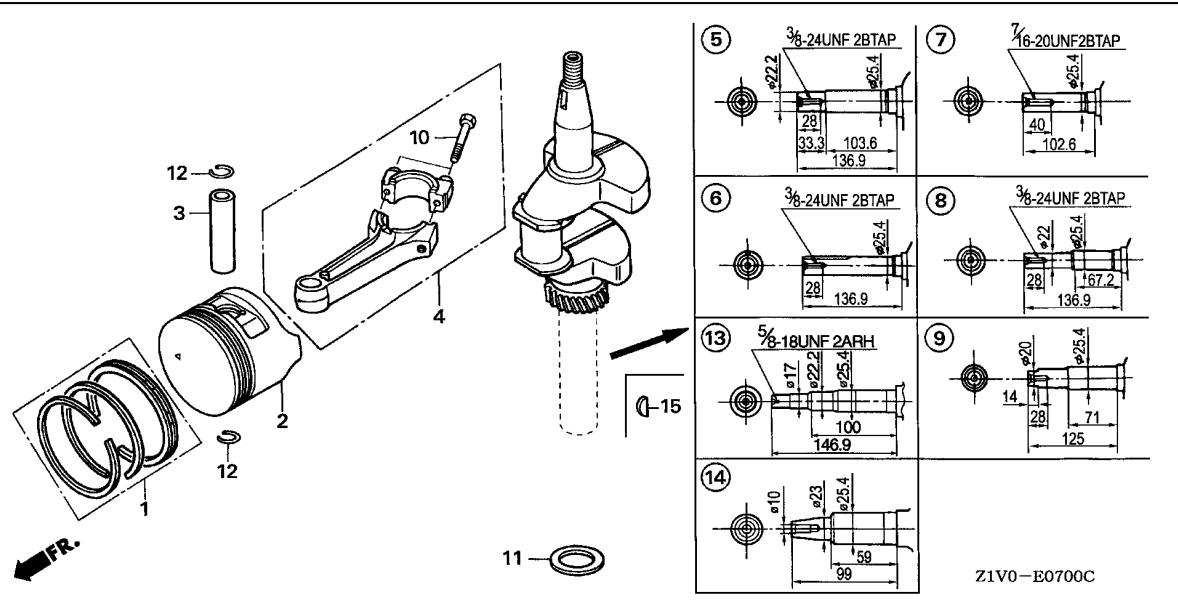


Ref. No.	L.O.N.	(Relative ref. Number) Description	F.R.T.
1		(2,3)	
1131A9		PAN, OIL AND/OR PACKING, OIL PAN	0.3
4		1101A0 BARREL, CYLINDER	1.5
7		(9)	
1111E5		FILTER, BREATHER	0.2
12		(40)	
1101B9		EXTENSION, OIL FILLER AND/OR PACKING, OIL FILLER EXTENSION (14)	0.1
15		1161A7 HOLDER, GOVERNOR WEIGHT	0.4
20		(37)	
1161B4		SHAFT, GOVERNOR ARM	0.3
23		(36)	
2131J5		SHAFT, DRIVE	0.3
24		2131D5 GEAR, DRIVEN	0.3
38		1101E6 OIL SEAL, CRANKSHAFT :UPPER ..	1.1
39		1101E7 OIL SEAL, CRANKSHAFT :LOWER ..	0.3
48		1101J7 BEARING, CRANKSHAFT :LOWER ...	1.2

Ref. No.	Part No.	Description	Reqd. QTY		Serial No.	Parts catalogue code
			GXV	H2		
1	11300-Z1V-000	PAN ASSY., OIL	1		A1S,A1SA,A14,C12,C14,N1,N1F,N15,N4,N45,N5,N55,N6,T1AH	
	11300-Z1V-U90	1		N5M	
	11300-Z1V-V50	1		SFY	
2	11300-Z1V-800	PAN ASSY., OIL	1		N6S,SFC,SFL,SFL1,SFY1	
3	11381-ZE7-M10	PACKING, OIL PAN	1			
4	12000-Z1V-000	BARREL ASSY., CYLINDER	1		A1S,A1SA,A14,C12,C14,SFC	
	12000-Z2J-000	1		N1,N1F,N15,N4,N45,N5,N5M,N55,N6,N6S,SFL,SFL1,SFY,SFY1,T1AH	
	12000-ZE7-405	(1)		N1,N1F,N15,N4,N45,N5,N5M,N55,N6,N6S,SFL,SFL1,SFY,SFY1,T1AH	
	12000-ZE7-406	(1)		A1S,A1SA,A14,C12,C14,SFC	
5	12125-Z1V-000	PLATE, GUIDE	1		N1,N1F,N15,N4,N45,N5,N5M,N55,N6,N6S,SFL,SFL1,SFY,SFY1,T1AH	
6	12355-Z1V-000	COVER COMP., BREATHER	1			
7	12367-883-003	FILTER, BREATHER	1			
8	12372-ZE7-000	VALVE, BREATHER	1			
9	12373-ZE7-000	PACKING, BREATHER COVER	1			
10	15335-ZE7-000	RUBBER, OIL RETURN	1			
11	15620-ZE6-810	GAUGE COMP., OIL LEVEL	1			
12	15630-ZE6-810	EXTENSION, OIL FILLER	1			
13	16510-ZE6-000	GOVERNOR ASSY.	1			
14	16511-ZE1-000	WEIGHT, GOVERNOR	2			
15	16512-ZE6-000	HOLDER, GOVERNOR WEIGHT	1			
16	16513-ZE1-000	PIN, GOVERNOR WEIGHT	2			
17	16515-ZE6-010	SHAFT, GOVERNOR HOLDER	1			
18	16525-ZE6-010	PLATE, GOVERNOR SHAFT HOLDER	1			
19	16531-Z1T-000	SLIDER, GOVERNOR	1			
20	16541-ZE7-000	SHAFT, GOVERNOR ARM	1			

2

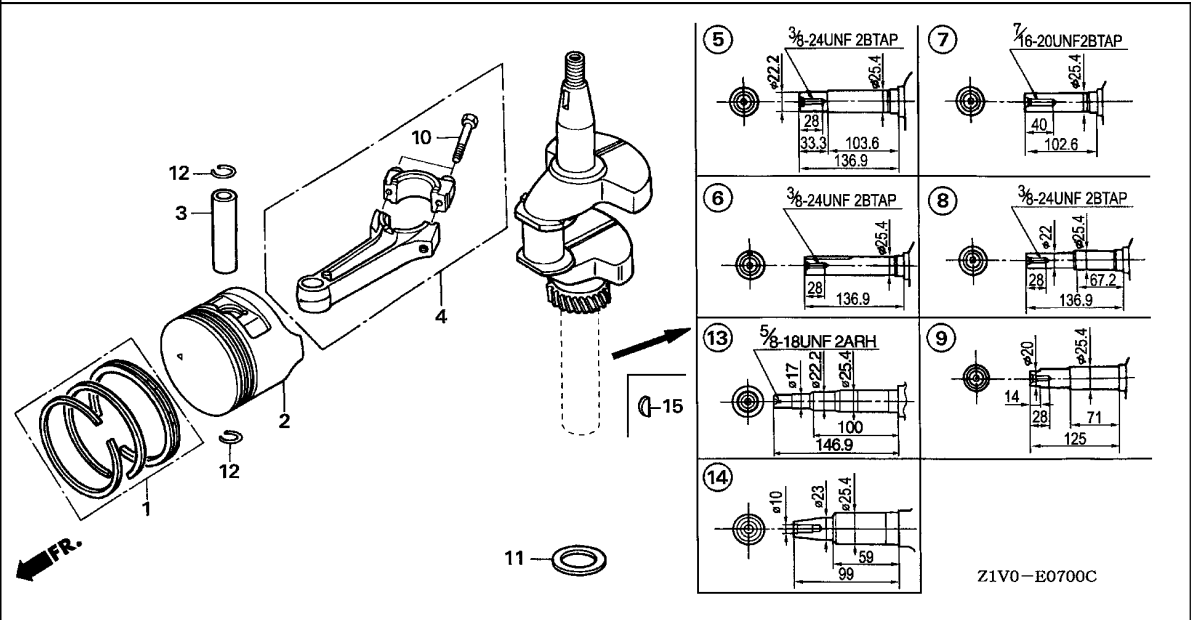
Ref. No.	Part No.	Description	Reqd. QTY		Serial No.	Parts catalogue code
			GXV 160 H2			
21	17240-ZE6-000	COLLAR, EXTENSION	1			
23	23411-ZE7-000	SHAFT, DRIVE	1	-----	-----	N6S,SFC,SFL,SFL1,SFY1
24	23421-ZE6-000	GEAR, DRIVEN (18T)	1	-----	-----	N6S,SFC,SFL,SFL1,SFY1
25	43143-Z1V-000	BASE COMP., HOLDER	1	-----	-----	A1S,A1SA,A14,C12,C14,SFC
26	90014-952-000	BOLT, FLANGE, 6X14(CT200) ...	4			
27	90017-883-000	BOLT, FLANGE, 6X32	1			
28	90022-888-010	BOLT, FLANGE, 6X20(CT200) ...	2	-----	-----	N1,N1F,N15,N4,N45,N5,N5M,N55,N6,N6S,SFL,SFL1,SFY,SFY1,T1AH
29	90131-ZE1-000	BOLT, DRAIN PLUG	1			
30	90451-ZE1-000	WASHER, THRUST, 6MM	1			
31	90452-166-600	WASHER, THRUST, 12MM	1	-----	-----	N6S,SFC,SFL,SFL1,SFY1
32	90452-187-000	WASHER, 10X21	1	-----	-----	N6S,SFC,SFL,SFL1,SFY1
33	90601-ZE1-000	WASHER, DRAIN PLUG, 10.2MM ..	1			
34	90602-ZE1-000	CLIP, GOVERNOR HOLDER	1			
35	90701-ZE6-000	PIN, LOCK, 2.0	1	-----	-----	N6S,SFC,SFL,SFL1,SFY1
36	91205-Z1V-003	OIL SEAL, 12X20X6.5	1	-----	-----	N6S,SFC,SFL,SFL1,SFY1
37	91231-Z1V-003	OIL SEAL, 6X11X4	1			
38	91251-Z1V-003	OIL SEAL, 25X38X7	1			
39	91252-Z1V-003	OIL SEAL, 25.4X40X7	1			
40	91301-Z1V-003	O-RING, 22.1X2.2	1			
41	91302-Z1V-003	O-RING, 25.5X3	1			
42	93500-05016-0A	SCREW, PAN, 5X16	1	-----	-----	A1S,A1SA,A14,C12,C14,SFC
43	94101-06800	WASHER, PLAIN, 6MM	2			
44	94251-08000	PIN, LOCK, 8MM	1			
45	94301-08140	DOWEL PIN, 8X14	2			
46	95701-06012-08	BOLT, FLANGE, 6X12	1			
47	95701-08050-00	BOLT, FLANGE, 8X50	6			
48	96100-62050-00	BEARING, RADIAL BALL, 6205 ..	1			
49	12126-Z1V-000	PLATE A, GUIDE	1	-----	-----	N1,N1F,N15,N4,N45,N5,N5M,N55,N6,N6S,SFL,SFL1,SFY,SFY1,T1AH
	12126-Z1V-800	1	-----	-----	A1S,A1SA,A14,C12,C14,SFC
50	17560-Z1V-000	STAY COMP., TANK	1			
51	90013-883-000	BOLT, FLANGE, 6X12(CT200) ...	1			



Ref. No.	L.O.N.	(Relative ref. Number) Description	F.R.T.
2		(1,3,4) PISTON AND/OR RING SET AND/OR BEARING AND/OR ROD	1.2
5		1101F0 (6,7,8,9,13,14) CRANKSHAFT	1.1

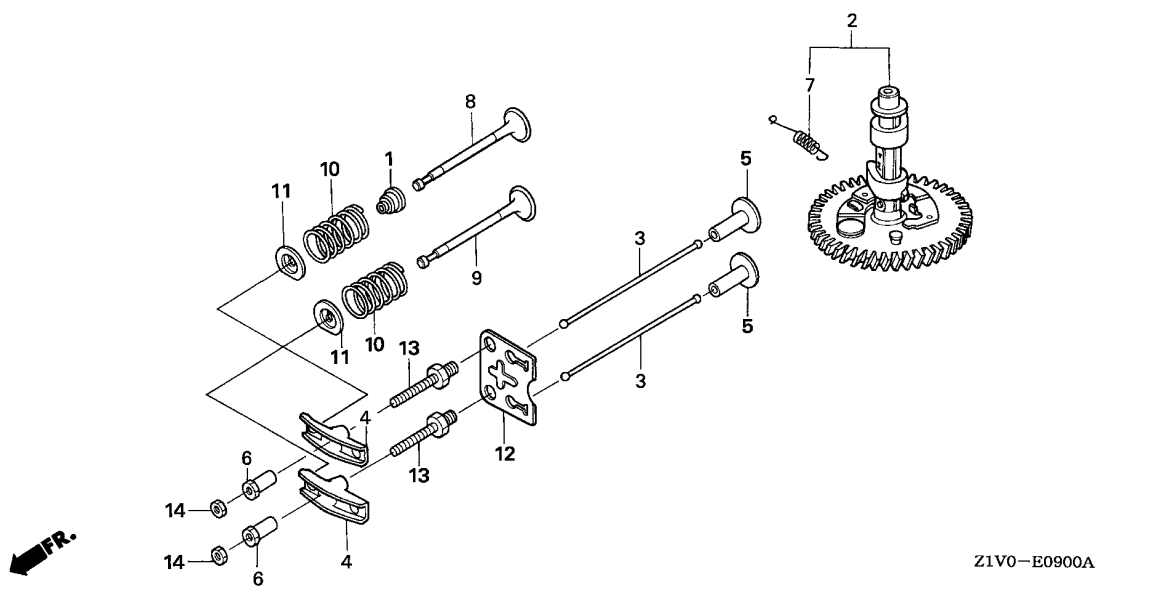
Ref. No.	Part No.	Description	Reqd. QTY	Serial No.	Parts catalogue code
			GXV 160 H2		
1	13010-ZL0-003	RING SET, PISTON (STD.) (TEIKOKU)	1		
	13010-ZL0-004	RING SET, PISTON (STD.) (NIPPON)	1		
	13011-ZL0-003	RING SET, PISTON (0.25) (TEIKOKU)	(1)		
	13011-ZL0-004	RING SET, PISTON (0.25) (NIPPON)	(1)		
	13012-ZL0-003	RING SET, PISTON (0.50) (TEIKOKU)	(1)		
	13012-ZL0-004	RING SET, PISTON (0.50) (NIPPON)	(1)		
	13013-ZL0-003	RING SET, PISTON (0.75) (TEIKOKU)	(1)		
	13013-ZL0-004	RING SET, PISTON (0.75) (NIPPON)	(1)		
2	13101-ZH8-010	PISTON (STD.)	1		
	13101-Z1T-000	PISTON (STD.) (JIALING-HONDA)	1		
	13102-ZE7-020	PISTON (0.25)	(1)		
	13103-ZE7-020	PISTON (0.50)	(1)		
	13104-ZE7-020	PISTON (0.75)	(1)		
3	13111-Z1T-000	PIN, PISTON	1		
4	13200-Z1V-000	ROD ASSY., CONNECTING	1		
5	13310-ZE7-010	CRANKSHAFT COMP.	1	----- A1S,A1SA,A14,C14,N1,N1F,N15	
6	13310-ZE7-641	CRANKSHAFT COMP.	1	----- N4,N45	
7	13310-ZE7-661	CRANKSHAFT COMP.	1	----- N5,N55	
8	13310-ZE7-681	CRANKSHAFT COMP.	1	----- N6	
9	13310-ZE7-771	CRANKSHAFT COMP.	1	----- C12,N6S,SFC,SFL,SFL1,SFY,SFY1	

2



Ref. No.	Part No.	Description	Reqd. QTY		Serial No.	Parts catalogue code
			GXV 160 H2			
10	90001-ZE1-000	BOLT, CONNECTING ROD	2			
11	90401-ZE7-W00	WASHER, THRUST, 25.6MM	1			
12	90551-ZE1-000	CLIP, PISTON PIN, 18MM	2			
13	13310-ZE7-V20	CRANKSHAFT COMP.	1	-----	-----	T1AH
14	13310-ZE7-U41	CRANKSHAFT COMP.	1	-----	-----	N5M
15	90741-ZV4-000	KEY, SPECIAL, 16X15	1	-----	-----	A1SA

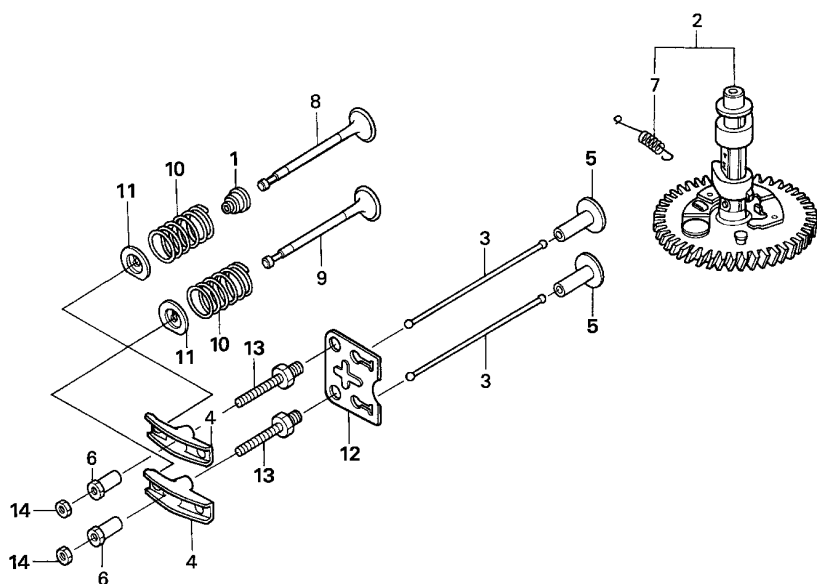




Ref. No.	L.O.N.	(Relative ref. Number) Description	F.R.T.
1	1111K2	SEAL, INTAKE VALVE STEMINCLUDES: Valve clearance adjustment	0.7
2	1111C2	CAMSHAFTINCLUDES: Valve clearance adjustment	0.6
3	1111L6	ROD, PUSH :INTAKEINCLUDES: Valve clearance adjustment	0.2
	1111L6A	.Replace exhaust push rod add	0.1
	1111L7	ROD, PUSH :EXHAUSTINCLUDES: Valve clearance adjustment	0.2
	1111L7A	.Replace intake push rod add	0.1
4	1111A2	ARM, ROCKER :INTAKEINCLUDES: Valve clearance adjustment	0.2
	1111A2A	.Replace exhaust rocker arm add	0.1
	1111A1	ARM, ROCKER :EXHAUSTINCLUDES: Valve clearance adjustment	0.2
	1111A1A	.Replace intake rocker arm add	0.1
5	1111L9	LIFTER, VALVE :INTAKENOTE: Same time for two units	0.6

Z1V0-E0900A

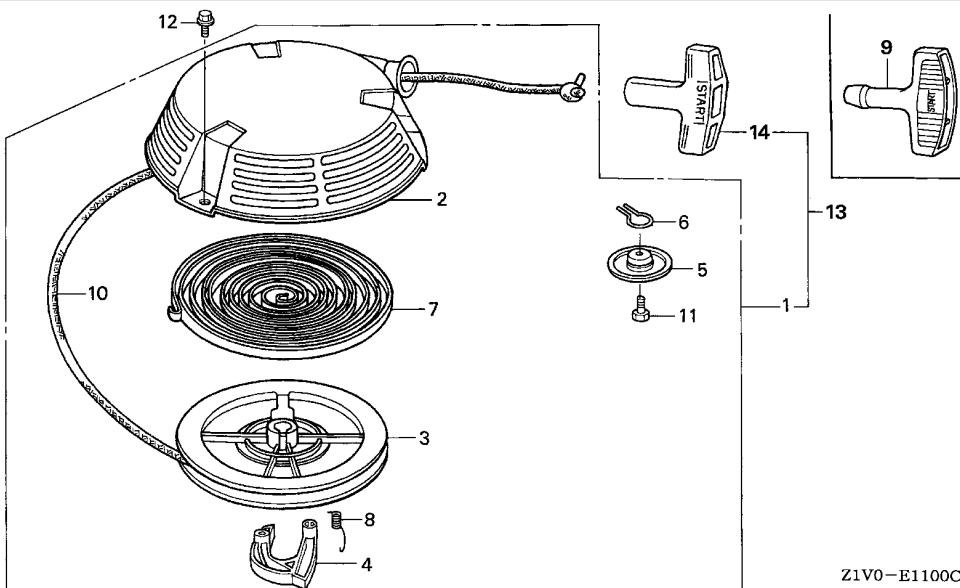
Ref. No.	Part No.	Description	Reqd. QTY		Serial No.	Parts catalogue code
			GXV 160 H2			
1	12209-ZE6-003	SEAL, VALVE STEM	1			
2	14100-ZE7-000	CAMSHAFT ASSY.	1		----- A1S,A1SA,A14,C12,C14,N1,N1F,N15,N4,N45,N5,N5M,N55,N6,T1AH	
	14100-ZE7-770	1		----- N6S,SFC,SFL,SFL1,SFY,SFY1	
3	14410-ZE1-010	ROD, PUSH	2			
4	14431-ZE1-000	ARM, VALVE ROCKER	2			
5	14441-ZE1-010	LIFTER, VALVE	2			
6	14451-ZE1-013	PIVOT, ROCKER ARM	2			
7	14568-ZE1-000	SPRING, WEIGHT RETURN	1			
8	14711-ZF1-000	VALVE, IN.	1			
9	14721-ZE7-000	VALVE, EX.	1			
10	14751-ZE1-000	SPRING, VALVE	2			
11	14771-ZE1-000	RETAINER, IN. VALVE SPRING ..	2			
12	14791-ZE1-010	PLATE, PUSH ROD GUIDE	1			
13	90012-ZE0-010	BOLT, PIVOT, 8MM	2			
14	90206-ZE1-000	NUT, PIVOT ADJUSTING	2			



Z1V0-E0900A

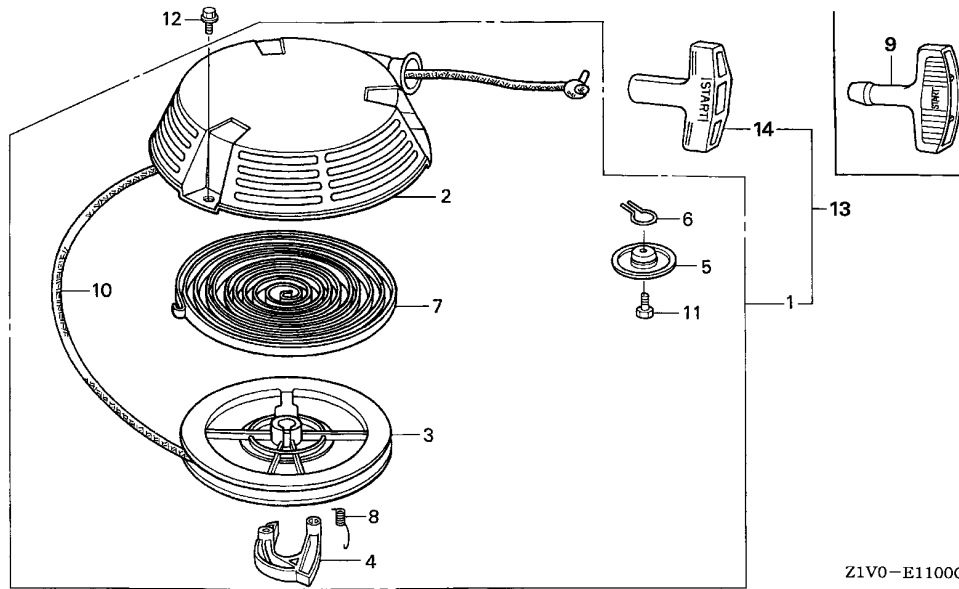
Ref. No.	L.O.N.	(Relative ref. Number) Description	F.R.T.
+ 5	1111M0	LIFTER, VALVE :EXHAUSTNOTE: Same time for two units	0.6
8	1111L1	VALVE, INTAKE	0.7
	1111L1E	.INCLUDES: Valve clearance adjustment and reface .Replace intake and exhaust all add	0.1
9	1111L0	VALVE, EXHAUST	0.7
	1111L0E	.INCLUDES: Valve clearance adjustment and reface .Replace intake and exhaust all add	0.1
10	1111P3	SPRING, VALVE :INTAKE	0.6
	1111P3A	.INCLUDES: Valve clearance adjustment .Replace intake and exhaust all add	0.1
	1111P4	SPRING, VALVE :EXHAUST	0.6
	1111P4A	.INCLUDES: Valve clearance adjustment .Replace intake and exhaust all add	0.1





Ref. No.	L.O.N.	(Relative ref. Number) Description	F.R.T.
1		(13)	
1	1121B9	STARTER, RECOIL	0.1
3	1121B1	REEL, RECOIL STARTER	0.3
4		(8)	
4	1121B0	RATCHET, STARTER AND/OR SPRING, RATCHET	0.2
7	1121B7	SPRING, RECOIL STARTER RETURN	0.3
10	1121B3	ROPE, RECOIL STARTER	0.3

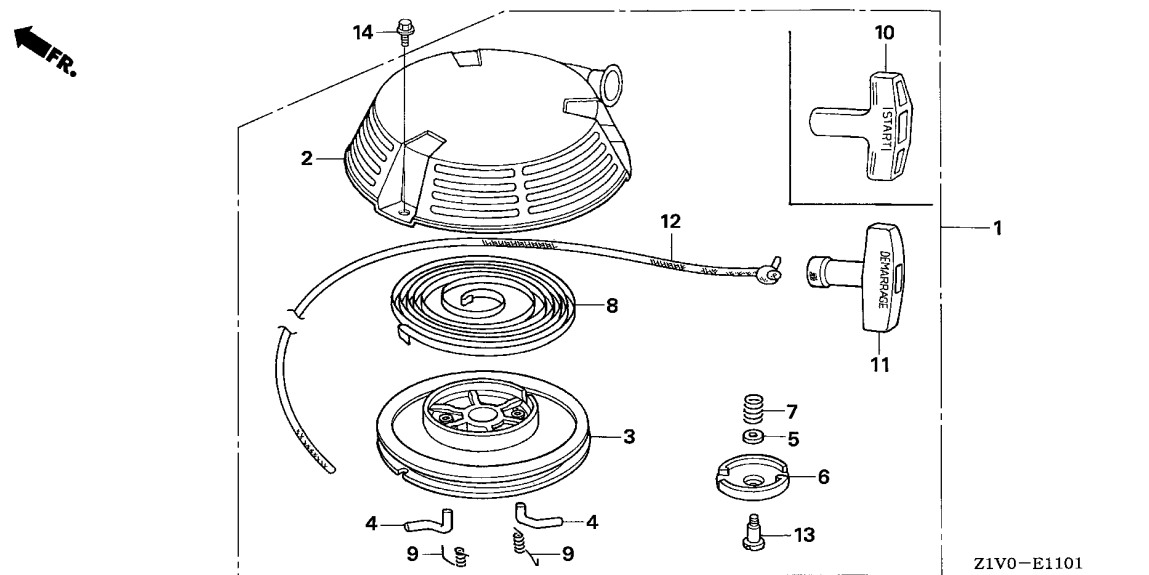
Ref. No.	Part No.	Description	Reqd. QTY	Serial No.	Parts catalogue code
1	28400-Z1V-J51ZA	STARTER ASSY., RECOIL (LONG ROPE)			
		R280.....POWER RED	1	-----	1098141 A1S,A1SA,N5M
	28400-Z1V-J51ZB	*NH1*.....BLACK	1	-----	1098141 A1S,A1SA,N5M
2	28410-ZE7-003ZB	CASE COMP., RECOIL STARTER			
		NH1.....BLACK	1	-----	1098141 A1S,A1SA,A14,N1F,N15,N45,N5M,N55
	28410-ZE7-003ZD	*R280*.....POWER RED	1	-----	1113862 SFL1,T1AH
3	28420-ZE7-003	PULLEY, RECOIL STARTER	1	-----	1098141 A1S,A1SA,A14,N1F,N15,N45,N5M,N55
4	28422-896-010	RATCHET, STARTER	1	-----	1113862 C12,C14,N1,N4,N5,N6,N6S,SFC,SFL,SFL1,SFY,SFY1,T1AH
5	28431-896-000	PLATE, FRICTION	1	-----	1098141 A1S,A1SA,A14,N1F,N15,N45,N5M,N55
			1	-----	1113862 C12,C14,N1,N4,N5,N6,N6S,SFC,SFL,SFL1,SFY,SFY1,T1AH
6	28441-896-000	SPRING, FRICTION	1	-----	1098141 A1S,A1SA,A14,N1F,N15,N45,N5M,N55
			1	-----	1113862 C12,C14,N1,N4,N5,N6,N6S,SFC,SFL,SFL1,SFY,SFY1,T1AH
7	28442-896-700	SPRING, RECOIL STARTER	1	-----	1098141 A1S,A1SA,A14,N1F,N15,N45,N5M,N55
			1	-----	1113862 C12,C14,N1,N4,N5,N6,N6S,SFC,SFL,SFL1,SFY,SFY1,T1AH
8	28443-896-000	SPRING, RETURN	1	-----	1098141 A1S,A1SA,A14,N1F,N15,N45,N5M,N55
			1	-----	1113862 C12,C14,N1,N4,N5,N6,N6S,SFC,SFL,SFL1,SFY,SFY1,T1AH
9	28461-ZE7-T00	GRIP, STARTER	1	-----	1098141 A1S,A1SA,N5M
10	28462-ZA7-003	ROPE, RECOIL STARTER	1	-----	1098141 A14
	28462-ZE7-V11	1	-----	1113862 C12,C14,N1,N4,N5,N6,N6S,SFC,SFL,SFL1,SFY,SFY1,T1AH
			1	-----	1098141 A1S,A1SA,N1F,N15,N45,N5M,N55
11	92101-06012-OH	BOLT, HEX., 6X12	1	-----	1098141 A1S,A1SA,A14,N1F,N15,N45,N5M,N55
			1	-----	1113862 C12,C14,N1,N4,N5,N6,N6S,SFC,SFL,SFL1,SFY,SFY1,T1AH



Z1V0-E1100C

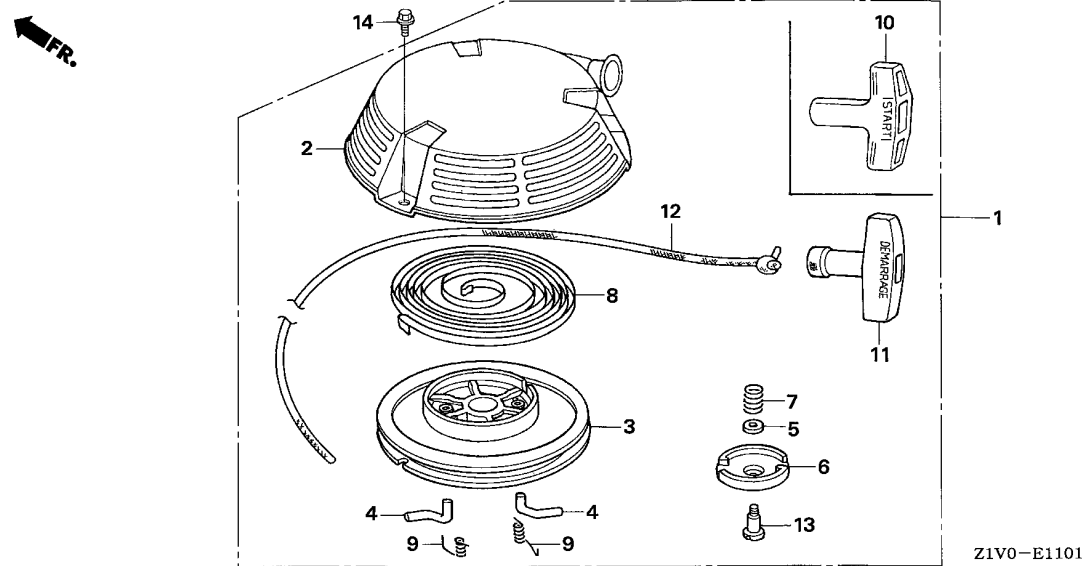
Ref. No.	Part No.	Description	Reqd. QTY		Serial No.	Parts catalogue code
			GXV 160 H2			
12	95701-06008-00	BOLT, FLANGE, 6X8	3	-----	1098141 A1S,A1SA,A14,N1F,N15,N45,N5M,N55	
13	28400-ZE7-V11ZB	STARTER ASSY., RECOIL (LONG ROPE)	3	-----	1113862 C12,C14,N1,N4,N5,N6,N6S,SFC,SFL,SFL1,SFY,SFY1,T1AH	
		NH1.....BLACK	1	-----	1098141 N1F,N15,N45,N55	
	28400-ZE7-V11ZC	*R280*.....POWER RED	1	-----	1098141 N1F,N15,N45,N55	
	28400-ZE7-003ZB	STARTER ASSY., RECOIL				
		NH1.....BLACK	1	-----	1098141 A14	
			1	-----	1113862 SFL1,T1AH	
	28400-ZE7-003ZC	*R280*.....POWER RED	1	-----	1098141 A14	
			1	-----	1113862 C12,C14,N1,N4,N5,N6,N6S,SFC,SFL,SFL1,SFY,SFY1	
14	28461-ZE1-003	KNOB, RECOIL STARTER	1	-----	1098141 A14,N1F,N15,N45,N55	
			1	-----	1113862 C12,C14,N1,N4,N5,N6,N6S,SFC,SFL,SFL1,SFY,SFY1,T1AH	





Ref. No.	L.O.N.	(Relative ref. Number) Description	F.R.T.
1	1121B9	STARTER, RECOIL	0.1
3	1121B1	REEL, RECOIL STARTER	0.3
4	1121B0	RATCHET, STARTER AND/OR SPRING, RATCHET	0.2
8	1121B7	SPRING, RECOIL STARTER RETURN	0.3
12	1121B3	ROPE, RECOIL STARTER	0.3

Ref. No.	Part No.	Description	Reqd. QTY		Serial No.	Parts catalogue code
			GXV 160 H2			
1	28400-Z1V-003ZA	STARTER ASSY., RECOIL	1			
	NH1BLACK	1	1113863	-----	SFL1,T1AH
	28400-Z1V-003ZB	*R280*.....POWER RED	1	1113863	-----	C12,C14,N1,N4,N5,N6,N6S,SFC,SFL,SFL1,SFY,SFY1
	28400-Z1V-801ZA	STARTER ASSY., RECOIL (LONG ROPE)	1			
	NH1BLACK	1	1098142	-----	A1S,A1SA,A14,N1F,N15,N45,N5M,N55
	28400-Z1V-801ZB	*R280*.....POWER RED	1	1098142	-----	A1S,A1SA,A14,N1F,N15,N45,N5M,N55
2	28410-Z1V-003ZA	CASE COMP., RECOIL STARTER	1			
	R280POWER RED	1	1098142	-----	A1S,A1SA,A14,N1F,N15,N45,N5M,N55
	28410-Z1V-003ZB	*NH1*.....BLACK	1	1113863	-----	SFL1,T1AH
	28410-Z1V-003ZC	*R280*.....POWER RED	1	1098142	-----	A1S,A1SA,A14,N1F,N15,N45,N5M,N55
3	28420-Z1V-003	REEL, RECOIL STARTER (BLACK)	1	1098142	-----	A1S,A1SA,A14,N1F,N15,N45,N5M,N55
			1	1113863	-----	C12,C14,N1,N4,N5,N6,N6S,SFC,SFL,SFL1,SFY,SFY1,T1AH
4	28422-ZH8-801	RATCHET, STARTER	2	1098142	-----	A1S,A1SA,A14,N1F,N15,N45,N5M,N55
			2	1113863	-----	C12,C14,N1,N4,N5,N6,N6S,SFC,SFL,SFL1,SFY,SFY1,T1AH
5	28431-ZH8-801	PLATE, FRICTION	1	1098142	-----	A1S,A1SA,A14,N1F,N15,N45,N5M,N55
			1	1113863	-----	C12,C14,N1,N4,N5,N6,N6S,SFC,SFL,SFL1,SFY,SFY1,T1AH
6	28433-ZH8-801	GUIDE, RATCHET	1	1098142	-----	A1S,A1SA,A14,N1F,N15,N45,N5M,N55
			1	1113863	-----	C12,C14,N1,N4,N5,N6,N6S,SFC,SFL,SFL1,SFY,SFY1,T1AH
7	28441-ZH8-801	SPRING, FRICTION	1	1098142	-----	A1S,A1SA,A14,N1F,N15,N45,N5M,N55
			1	1113863	-----	C12,C14,N1,N4,N5,N6,N6S,SFC,SFL,SFL1,SFY,SFY1,T1AH
8	28442-ZH8-003	SPRING, RECOIL STARTER	1	1098142	-----	A1S,A1SA,A14,N1F,N15,N45,N5M,N55
			1	1113863	-----	C12,C14,N1,N4,N5,N6,N6S,SFC,SFL,SFL1,SFY,SFY1,T1AH
9	28443-ZH8-801	SPRING, RETURN	2	1098142	-----	A1S,A1SA,A14,N1F,N15,N45,N5M,N55
			2	1113863	-----	C12,C14,N1,N4,N5,N6,N6S,SFC,SFL,SFL1,SFY,SFY1,T1AH
10	28461-ZE1-003	KNOB, RECOIL STARTER (FOR LONG ROPE)	1	1098142	-----	A1S,A1SA,A14,N1F,N15,N45,N5M,N55



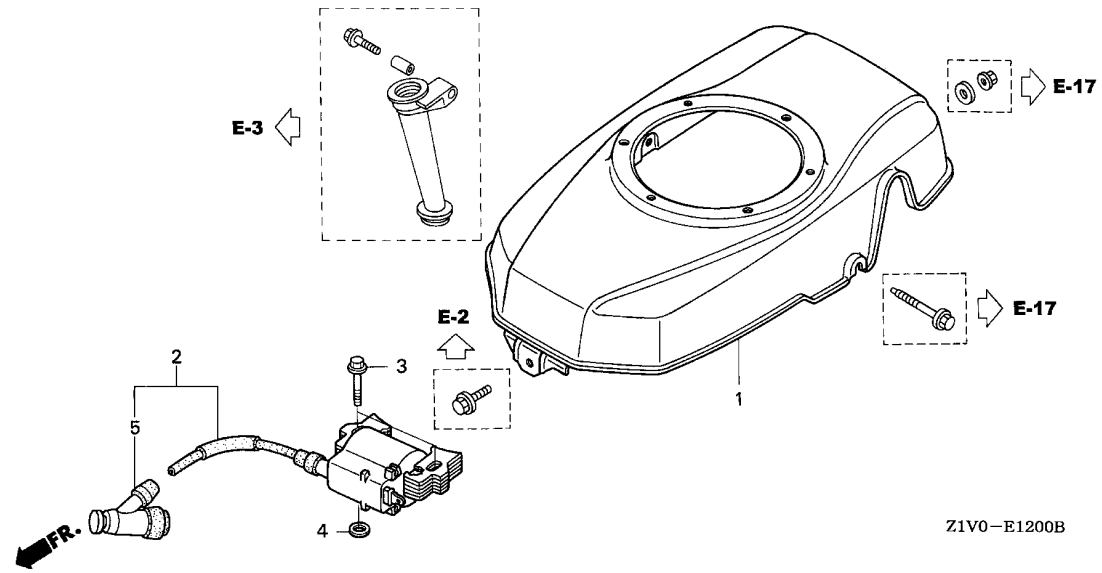
Ref. No.	Part No.	Description	Reqd. QTY		Serial No.	Parts catalogue code
			GXV 160 H2			
11	28461-ZH8-003	GRIP, STARTER	1	1113863	-----	C12,C14,N1,N4,N5,N6,N6S,SFC,SFL,SFL1,SFY,SFY1,T1AH
12	28462-ZH8-003	ROPE, RECOIL STARTER	1	1113863	-----	C12,C14,N1,N4,N5,N6,N6S,SFC,SFL,SFL1,SFY,SFY1,T1AH
	28462-Z1V-801	ROPE, RECOIL STARTER (LONG) (2360MM)	1	1098142	-----	A1S,A1SA,A14,N1F,N15,N45,N5M,N55
13	90003-ZH8-801	SCREW, SETTING	1	1098142	-----	A1S,A1SA,A14,N1F,N15,N45,N5M,N55
			1	1113863	-----	C12,C14,N1,N4,N5,N6,N6S,SFC,SFL,SFL1,SFY,SFY1,T1AH
14	95701-06008-00	BOLT, FLANGE, 6X8	3	1098142	-----	A1S,A1SA,A14,N1F,N15,N45,N5M,N55
			3	1113863	-----	C12,C14,N1,N4,N5,N6,N6S,SFC,SFL,SFL1,SFY,SFY1,T1AH



E-12

FAN COVER

C12



Ref. No.	L.O.N.	(Relative ref. Number) Description	F.R.T.
1	1141G8	COVER, ENGINE COOLING FAN	0.2
2	6141A5	COIL, IGNITION(ONE)	0.2
5	6141B8	TERMINAL, HIGH TENSION	0.1

Z1V0-E1200B

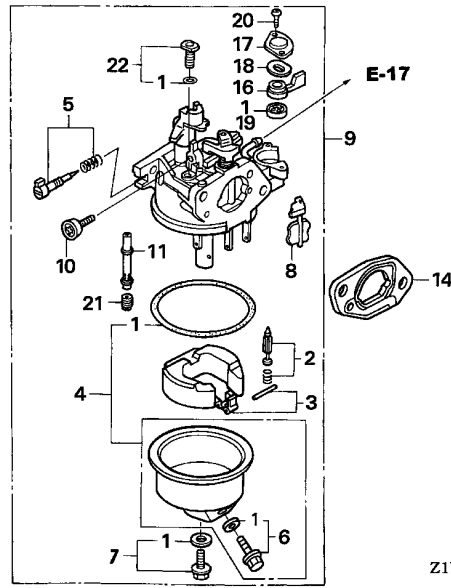
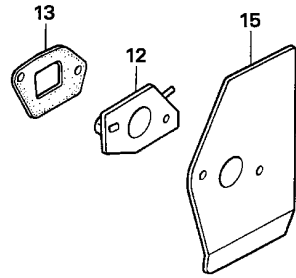
Ref. No.	Part No.	Description	Reqd. QTY		Serial No.	Parts catalogue code
			GXV 160 H2			
1	19610-Z1V-000ZA	COVER COMP., FAN *R280*.....POWER RED	1	-----	-----	A1S,A1SA,A14,C12,C14,N1,N1F,N15,N4,N45,N5,N5M,N55,N6,N6S,SFC,SFL,SFL1,SFY
	19610-Z1V-000ZB	*NH1*.....BLACK	1	-----	-----	A1S,A1SA,A14,N1F,N15,N45,N5M,N55,SFL1,T1AH
2	30500-Z1V-003	COIL ASSY., IGNITION	1			
3	90015-883-000	BOLT, FLANGE, 6X28	2			
4	90581-Z1V-000	WASHER, PLAIN, 6MM	2			
5	30700-Z1V-003	CAP ASSY., NOISE SUPPRESSOR .	1			

2

E-14

CARBURETOR

C13

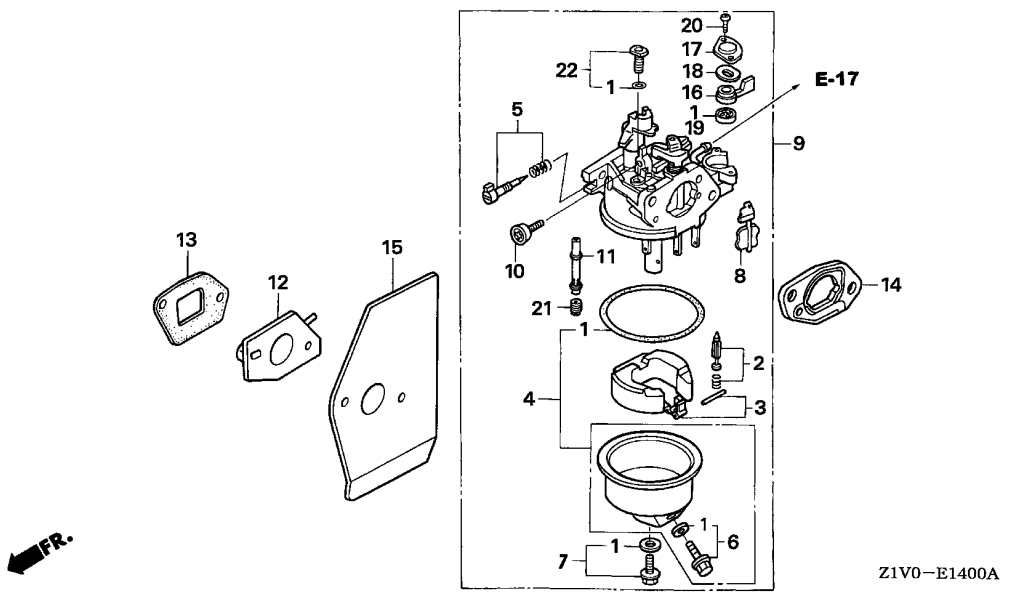


Z1V0-E1400A

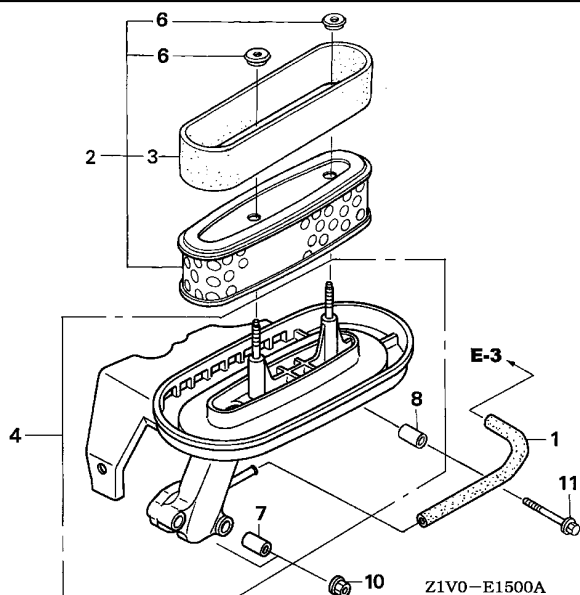
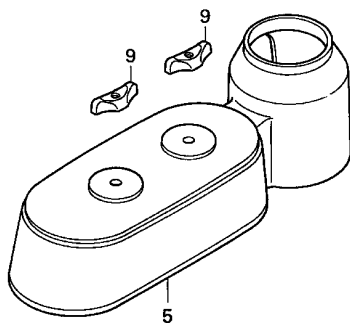
Ref. No.	L.O.N.	(Relative ref. Number) Description	F.R.T.
1	3111B1	GASKET SET, CARBURETOR (3)	0.3
2	3111E1	VALVE SET, FLOAT AND/OR FLOAT SET	0.3
5	3111D7	SCREW SET, PILOT	0.2
9	3111F3	CARBURETOR (13)	0.2
12	3111C0	INSULATOR, CARBURETOR AND/OR PACKING, INSULATOR	0.2
15	3111C8	PACKING, CARBURETOR (16,17,18)	0.2
19	3101C5	PACKING, FUEL COCK	0.2
21	3111C3	JET, MAIN	0.3

Ref. No.	Part No.	Description	Reqd. QTY	Serial No.	Parts catalogue code
			GXV 160 H2		
1	16010-ZE0-025	GASKET SET	1		
2	16011-ZE0-005	VALVE SET, FLOAT	1		
3	16013-ZE0-005	FLOAT SET	1		
4	16015-ZE0-831	CHAMBER SET, FLOAT	1		
5	16016-ZH7-W01	SCREW SET, PILOT	1		
6	16024-ZE1-811	SCREW SET, DRAIN	1		
7	16028-ZE0-005	SCREW SET	1		
8	16045-ZE7-005	CHOKE SET	1		
9	16100-Z1V-003	CARBURETOR ASSY. (BE66J A)	1	-----	A1S,A1SA,A14,C12,C14,N1,N1F,N15,N4,N45,N5,N55,N6,N6S,SFC,SFL,SFL1,SFY SFY1,T1AH
	16100-Z1V-J71	CARBURETOR ASSY. (BE66M A)	1	-----	N5M
10	16124-ZE0-005	SCREW, THROTTLE STOP	1		
11	16166-Z1V-003	NOZZLE, MAIN	1	-----	A1S,A1SA,A14,C12,C14,N1,N1F,N15,N4,N45,N5,N55,N6,N6S,SFC,SFL,SFL1,SFY SFY1,T1AH
	16166-Z1V-J71		1	-----	N5M
12	16211-ZE7-000	INSULATOR, CARBURETOR	1		
13	16212-ZE7-M10	PACKING, INSULATOR	1		
14	16220-ZE6-010	SPACER COMP., CARBURETOR	1		
15	16221-ZE7-M11	PACKING, CARBURETOR	1		
16	16953-ZE1-812	LEVER, COCK	1		
17	16954-ZE1-812	PLATE, LEVER SETTING	1		
18	16956-ZE1-811	SPRING, COCK LEVER	1		
19	16957-ZE1-812	PACKING, FUEL COCK	1		
20	93500-03006-1H	SCREW, PAN, 3X6	2		





Ref. No.	Part No.	Description	Reqd. QTY		Serial No.	Parts catalogue code
			GXV 160 H2			
21	99101-ZH8-0600	JET, MAIN, #60	(1)			A1S,A1SA,A14,C12,C14,N1,N1F,N15,N4,N45,N5,N55,N6,N6S,SFC,SFL,SFL1,SFY SFY1,T1AH
	99101-ZH8-0620	JET, MAIN, #62	(1)			
	99101-ZH8-0650	JET, MAIN, #65	1			A1S,A1SA,A14,C12,C14,N1,N1F,N15,N4,N45,N5,N55,N6,N6S,SFC,SFL,SFL1,SFY SFY1,T1AH
	99101-ZH8-0680	JET, MAIN, #68	1			N5M
22	99204-ZE0-0350	JET SET, PILOT, #35	1			N5M

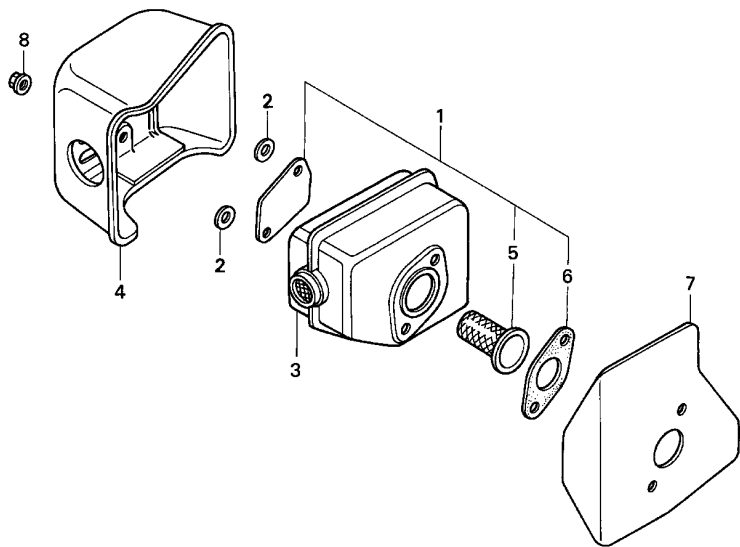


FR.

Ref. No.	L.O.N.	(Relative ref. Number) Description	F.R.T.
1	1111K5	TUBE, BREATHER	0.1
2	3121B8	ELEMENT, AIR CLEANER	0.1
3	3121C1	FILTER, OUTER	0.1
4	3121A5	CASE, AIR CLEANER	0.2
5	3121B1	COVER, AIR CLEANER	0.1

Ref. No.	Part No.	Description	Reqd. QTY		Serial No.	Parts catalogue code
			GXV 160 H2			
1	15721-ZE7-000	TUBE, BREATHER	1			
2	17210-Z1V-003	ELEMENT, AIR CLEANER	1			
3	17218-888-003	FILTER, OUTER	1			
4	17220-Z1V-000	CASE COMP., AIR CLEANER	1			
5	17231-Z1V-000	COVER, AIR CLEANER	1			
6	17232-891-000	GROMMET, AIR CLEANER	2			
7	17238-ZE7-710	COLLAR, AIR CLEANER	2			
8	17239-ZE6-300	COLLAR B, AIR CLEANER	1			
9	90300-Z1V-000	NUT, AIR CLEANER	2			
10	94050-06000	NUT, FLANGE, 6MM	2			
11	95701-06035-00	BOLT, FLANGE, 6X35	1			

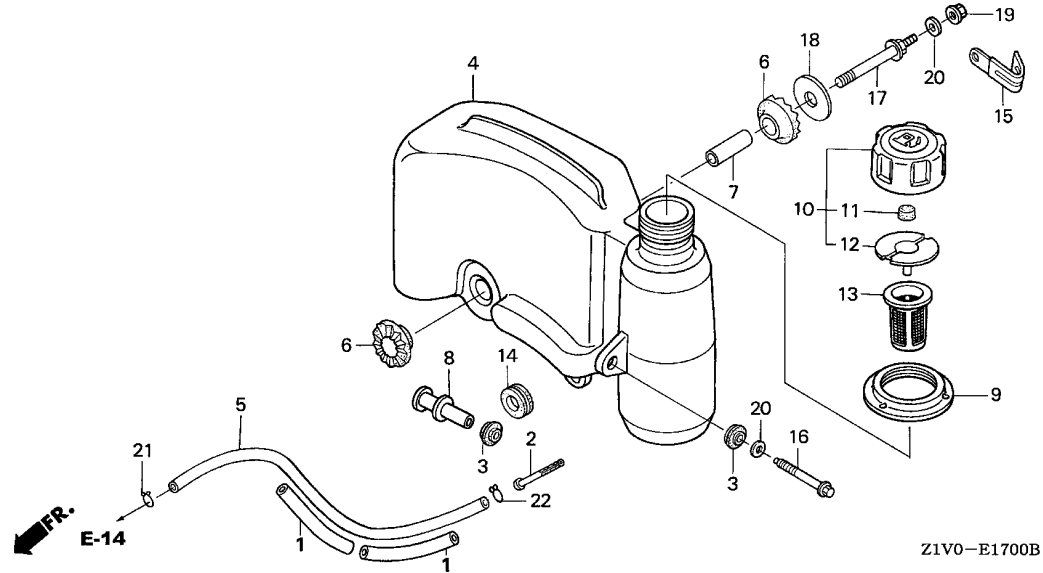




Z1V0-E1600

Ref. No.	L.O.N.	(Relative ref. Number) Description	F.R.T.
1	3131A0	ARRESTER KIT, SPARK	0.2
3	3131C5	MUFFLER, EXHAUST	0.2
4	3131D6	PROTECTOR, EXHAUST MUFFLER ...	0.1
5	3131A1	ARRESTER, SPARK	0.2
6	3131B4	GASKET, EXHAUST MUFFLER	0.2

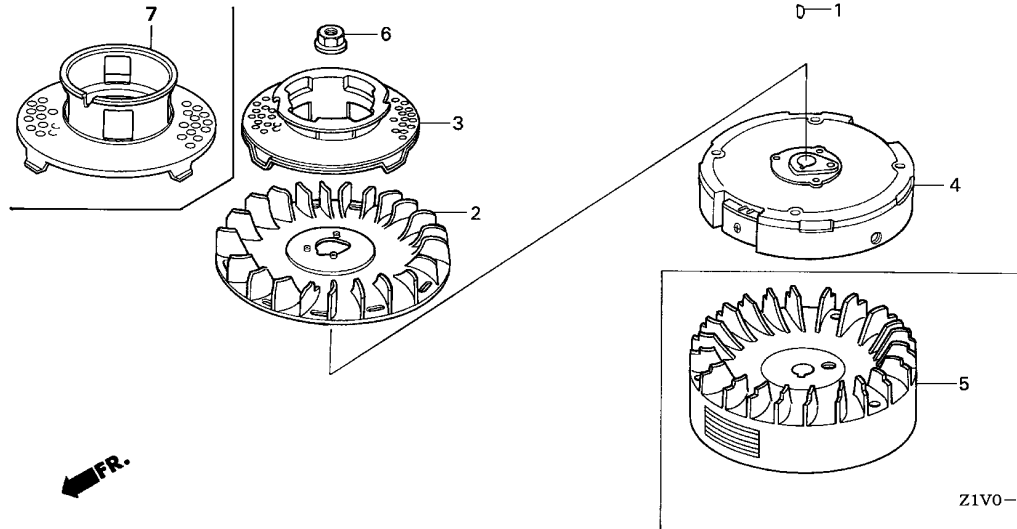
Ref. No.	Part No.	Description	Reqd. QTY		Serial No.	Parts catalogue code
			GXV 160 H2			
1	06180-ZE6-820	ARRESTER KIT, SPARK	(1)			
2	18292-ZE7-M10	PACKING, PROTECTOR	2	-----	A1S,A1SA,A14,C12,C14,N1F,N15,N4,N45,N5M,N55,SFC,SFY	
3	18310-Z1V-000	MUFFLER COMP.	1			
4	18320-Z1V-000	PROTECTOR COMP., MUFFLER	1			
5	18355-888-810	ARRESTER, SPARK	(1)			
6	18381-ZE6-820	GASKET, MUFFLER	(1)			
7	18381-Z1V-000	GASKET, MUFFLER	1			
8	90343-ZE6-000	NUT, SELF-LOCK, 6MM	2			



Ref. No.	L.O.N.	(Relative ref. Number) Description	F.R.T.
2	3101H8	STRAINER, FUEL	0.2
4	3101H7	TANK, FUEL	0.2
5	3101F6	TUBE, FUEL	0.1
6	3101M0	RUBBER B, TANK MOUNTING	0.2
12	3101L9	PACKING, FUEL CAP	0.1
13	3101M1	GAUGE, FUEL LEVEL	0.1

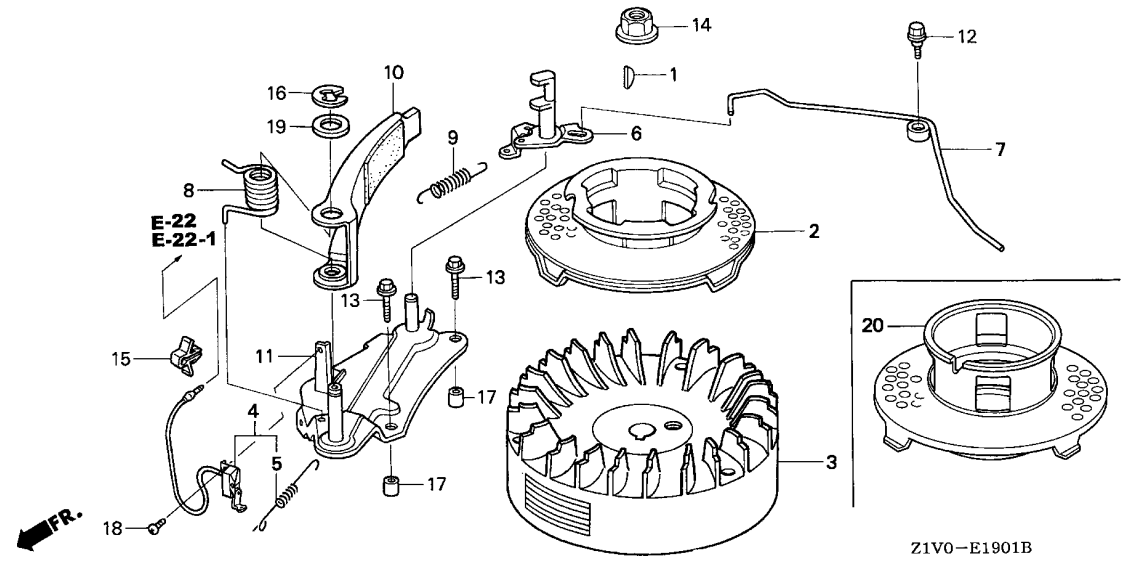
Z1V0-E1700B

Ref. No.	Part No.	Description	Reqd. QTY	Serial No.	Parts catalogue code
			GXV 160 H2		
1	16854-ZH8-000	RUBBER, SUPPORTER (107MM) ...	2		
2	16952-Z1V-000	STRAINER, FUEL	1		
3	17506-ZE7-000	RUBBER, TANK SETTING	2		
4	17510-Z1V-010	TANK COMP., FUEL	1		
5	17512-ZE7-000	TUBE, FUEL	1		
6	17516-896-700	RUBBER B, TANK MOUNTING	2		
7	17518-Z1V-000	COLLAR, TANK SET	1		
8	17519-Z1V-000	COLLAR COMP., TANK	1		
9	17532-Z1V-000	RUBBER, TANK MOUNTING	1		
10	17620-Z1V-000	CAP ASSY., FUEL TANK	1		
11	17622-888-010	SPONGE, FUEL CAP BREATHER ...	1		
12	17624-ZE7-000	PACKING, FUEL CAP	1		
13	17636-Z1V-010	GAUGE, FUEL LEVEL	1		
14	80103-MG2-000	CUSHION, RR. FENDER	1		
15	90010-GEO-710	CLIP, TUBE	1	----- A1S,A14,C12,C14,SFC	
16	90014-Z1V-000	BOLT, FLANGE, 6X47(CT200) ...	1		
17	90016-Z1V-000	BOLT, TANK STAY	1		
18	90455-896-700	WASHER, TANK MOUNTING	1		
19	94050-06000	NUT, FLANGE, 6MM	1		
20	94103-06000	WASHER, PLAIN, 6MM	2		
21	95002-02080	CLIP, TUBE (B8)	1		
22	95002-70000	CLIP, TUBE (C11)	1		



Ref. No.	L.O.N.	(Relative ref. Number) Description	F.R.T.
2	1141G7	FAN, ENGINE COOLING (7)	0.2
3	1121A9	PULLEY, RECOIL STARTER (5)	0.2
4	2161B5	FLYWHEEL	0.3

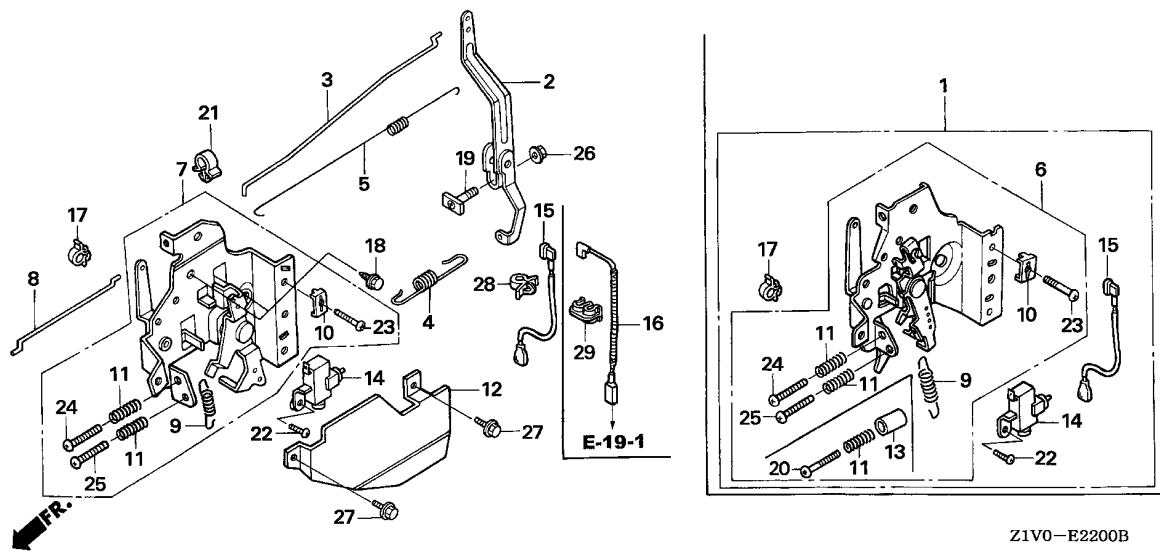
Ref. No.	Part No.	Description	Reqd. QTY		Serial No.	Parts catalogue code
			GXV 160 H2			
1	13331-357-000	KEY, SPECIAL WOODRUFF, 25X18	1		N1,N1F,N15,N4,N45,N5,N5M,N55,N6,N6S,SFL,SFL1,SFY,SFY1,T1AH	
2	19511-Z1T-000	FAN, COOLING	1		N1F,N5M,N6S,SFL,SFL1,SFY,SFY1	
3	28451-ZE7-003	PULLEY COMP., STARTER	1		1098141 N1F,N15,N45,N5M,N55	
4	31110-Z1V-003	FLYWHEEL COMP.	1		1113862 N1,N4,N5,N6,N6S,SFL,SFL1,SFY,SFY1,T1AH	
5	31110-Z1V-810	FLYWHEEL COMP. (BRAKE)	1		N1F,N5M,N6S,SFL,SFL1,SFY,SFY1	
6	90201-Z1T-000	NUT, SPECIAL, 14MM	1		N1,N15,N4,N45,N5,N5M,N55,N6,N6S,SFL,SFL1,SFY,SFY1,T1AH	
7	28450-Z1V-000	PULLEY COMP., STARTER	1		1098142 N1F,N15,N45,N5M,N55	
			1		1113863 N1,N4,N5,N6,N6S,SFL,SFL1,SFY,SFY1,T1AH	



Ref. No.	L.O.N.	(Relative ref. Number) Description	F.R.T.
2		(20)	
	1121A9	PULLEY, RECOIL STARTER	0.2
3	2161B5	FLYWHEEL	0.3
4	6151D9	SWITCH, ENGINE STOP	0.3
6	2161G3	CAM, FLYWHEEL BRAKE	0.4
8	2161G2	SPRING, FLYWHEEL BRAKE	0.4
9	2161G1	SPRING, FLYWHEEL BRAKE SHOE RETURN	0.4
10	216130	SHOE, FLYWHEEL BRAKE	0.4

Ref. No.	Part No.	Description	Reqd. QTY		Serial No.	Parts catalogue code
			GXV 160 H2			
1	13331-357-000	KEY, SPECIAL WOODRUFF, 25X18	1	-----	A1S,A1SA,A14,C12,C14,SFC	
2	28451-ZE7-003	PULLEY COMP., STARTER	1	-----	1098141 A1S,A1SA,A14 1113862 C12,C14,SFC	
3	31110-Z1V-810	FLYWHEEL COMP. (BRAKE)	1	-----	A1S,A1SA,A14,C12,C14,SFC	
4	35120-Z1V-811	SWITCH ASSY., ENGINE STOP (BRAKE)	1	-----	A1S,A1SA,A14,C12,C14,SFC	
5	35129-Z1V-811	SPRING, SWITCH CONTROL	1	-----	A1S,A1SA,A14,C12,C14,SFC	
6	43140-Z1V-000	CAM COMP., BRAKE	1	-----	A1S,A1SA,A14,C12,C14,SFC	
7	43145-ZE7-003	ROD, THROTTLE RETURN	1	-----	A1S,A1SA,A14,C12,C14,SFC	
8	75112-ZE6-000	SPRING, BRAKE	1	-----	A1S,A1SA,A14,C12,C14,SFC	
9	75113-ZE6-000	SPRING, BRAKE RETURN	1	-----	A1S,A1SA,A14,C12,C14,SFC	
10	75120-ZE6-013	BRAKE COMP.	1	-----	A1S,A1SA,A14,C12,C14,SFC	
11	75130-ZE7-000	BASE COMP., BRAKE	1	-----	A1S,A1SA,A14,C12,C14,SFC	
12	90015-ZE6-000	BOLT, FLANGE, 6MM	1	-----	A1S,A1SA,A14,C12,C14,SFC	
13	90018-ZE1-000	BOLT, FLANGE, 6X23(CT200) ...	2	-----	A1S,A1SA,A14,C12,C14,SFC	
14	90201-Z1T-000	NUT, SPECIAL, 14MM	1	-----	A1S,A1SA,A14,C12,C14,SFC	
15	30701-883-000	CLIP, HIGH TENSION CORD (8MM)	1	-----	A1S,A1SA,A14,C12,C14,SFC	
16	90653-723-000	E-RING, 10MM	1	-----	A1S,A1SA,A14,C12,C14,SFC	
17	90702-ZE6-000	DOWEL PIN, 8X9	2	-----	A1S,A1SA,A14,C12,C14,SFC	
18	93500-04008-0A	SCREW, PAN, 4X8	1	-----	A1S,A1SA,A14,C12,C14,SFC	
19	94102-12800	WASHER, PLAIN, 12MM	1	-----	A1S,A1SA,A14,C12,C14,SFC	
20	28450-Z1V-000	PULLEY COMP., STARTER	1	-----	1098142 A1S,A1SA,A14 1113863 C12,C14,SFC	

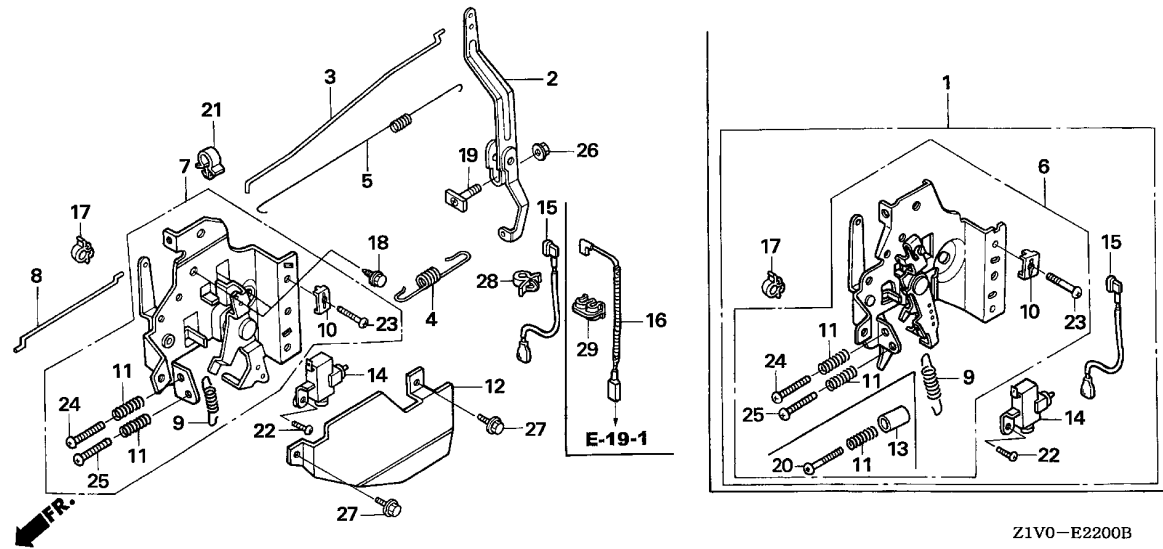




Ref. No.	L.O.N.	(Relative ref. Number) Description	F.R.T.
1	(7)		
1	1161A5	CONTROL, THROTTLE/GOVERNOR ...	0.3
2	1161A0	ARM, GOVERNOR	0.3
3	1161B1	ROD, GOVERNOR	0.3
4	1161C5	SPRING, GOVERNOR	0.2
5	1161C2	SPRING, THROTTLE RETURN	0.3
8	8101R5	ROD, GOVERNOR CHOKE CONTROL ..	0.2
9	1161C0	SPRING, LEVER	0.2
14	6151G0	SWITCH, ENGINE STOP(A)	0.2
15	(16)		
	6111B3	CORD, STOP SWITCH	0.2

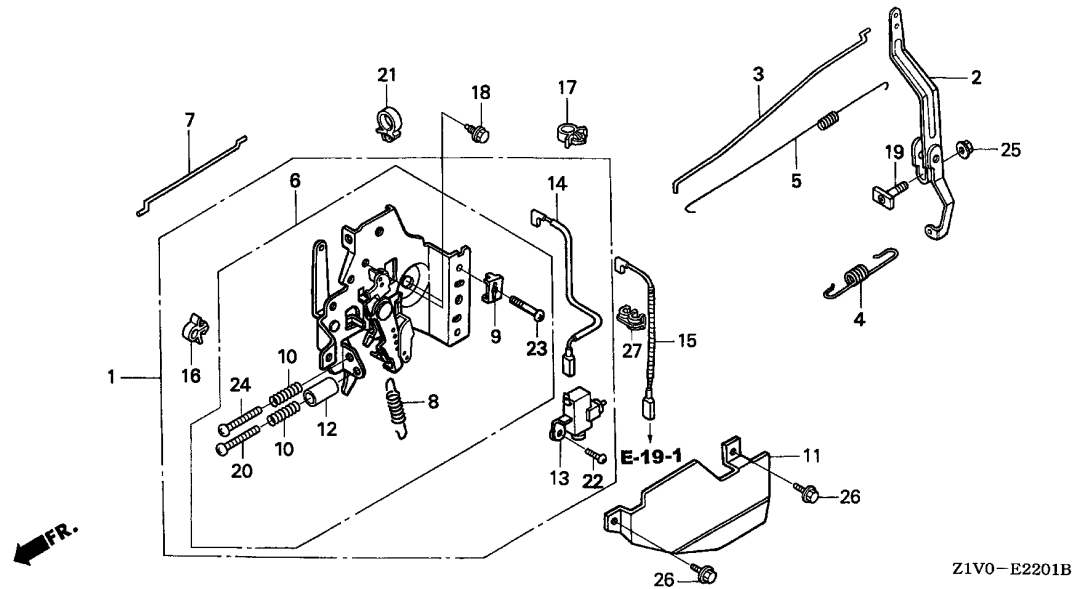
2

Ref. No.	Part No.	Description	Reqd. QTY		Serial No.	Parts catalogue code
			GXV 160 H2			
1	16500-ZE7-W31	CONTROL ASSY.	1		SFL,SFL1,SFY,SFY1	
2	16551-ZE7-000	ARM, GOVERNOR	1		C12,N1,N4,N5,N5M,N6,N6S,SFC,SFL,SFL1,SFY,SFY1,T1AH	
3	16555-ZE7-000	ROD, GOVERNOR	1		C12,N1,N4,N5,N5M,N6,N6S,SFC,SFL,SFL1,SFY,SFY1,T1AH	
4	16561-ZE7-020	SPRING, GOVERNOR	1		C12,N1,N4,N5,N6,N6S,SFC,SFL,SFL1,SFY,SFY1,T1AH	
	16561-ZE7-711	1		N5M	
5	16562-ZE6-000	SPRING, THROTTLE RETURN	1		C12,N1,N4,N5,N5M,N6,N6S,SFC,SFL,SFL1,SFY,SFY1,T1AH	
6	16570-ZE7-W10	CONTROL COMP.	1		SFC,SFL,SFL1,SFY,SFY1	
	16570-ZE7-772	1		N5M,N6,N6S	
7	16570-ZE7-020	CONTROL ASSY.	1		C12,N1,N4,N5,T1AH	
8	16573-ZE7-000	ROD, CHOKE	1		C12,N1,N4,N5,N5M,N6,N6S,SFC,SFL,SFL1,SFY,SFY1,T1AH	
9	16576-ZE7-300	SPRING, LEVER	1		C12,N1,N4,N5,N5M,N6,N6S,SFC,SFL,SFL1,SFY,SFY1,T1AH	
10	16576-891-000	HOLDER, CABLE	1		C12,N1,N4,N5,N5M,N6,N6S,SFC,SFL,SFL1,SFY,SFY1,T1AH	
11	16584-883-300	SPRING, CONTROL ADJUSTING ...	2		C12,N1,N4,N5,N5M,N6,N6S,SFC,SFL,SFL1,SFY,SFY1,T1AH	
12	16585-ZE7-000	PROTECTOR, CONTROL	1		C12,N1,N4,N5,N5M,N6,N6S,SFC,SFL,SFL1,SFY,SFY1,T1AH	
13	16599-ZG1-M10	COLLAR, STOPPER	1		SFC,SFL,SFL1,SFY,SFY1	
14	36100-ZE7-013	SWITCH ASSY., ENGINE STOP ...	1		N1,N4,N5,N5M,N6,N6S,SFL,SFL1,SFY,SFY1,T1AH	
15	36101-ZE7-020	CORD, STOP SWITCH	1		N1,N4,N5,N5M,N6,N6S,SFL,SFL1,SFY,SFY1,T1AH	
16	32195-Z1V-810	CORD, STOP SWITCH (BRAKE) ...	1		C12,SFC	
17	36103-ZE1-000	HOLDER, STOP SWITCH CORD ...	1		N1,N4,N5,N5M,N6,SFL,SFL1,SFY,SFY1,T1AH	
18	90013-883-000	BOLT, FLANGE, 6X12(CT200) ...	2		C12,N1,N4,N5,N5M,N6,N6S,SFC,SFL,SFL1,SFY,SFY1,T1AH	
19	90015-ZE5-010	BOLT, GOVERNOR ARM	1		C12,N1,N4,N5,N5M,N6,N6S,SFC,SFL,SFL1,SFY,SFY1,T1AH	
20	90016-ZE7-W00	SCREW, RECESSED, 5X28	1		SFC,SFL,SFL1,SFY,SFY1	
21	90659-680-013	CLIP, WIRE HARNESS	1		N1,N4,N5,N5M,N6,N6S,SFC,SFL,SFL1,SFY,SFY1,T1AH	
22	93500-04008-0A	SCREW, PAN, 4X8	1		N1,N4,N5,N5M,N6,N6S,SFL,SFL1,SFY,SFY1,T1AH	
23	93500-05016-0A	SCREW, PAN, 5X16	1		C12,N1,N4,N5,N5M,N6,N6S,SFC,SFL,SFL1,SFY,SFY1,T1AH	



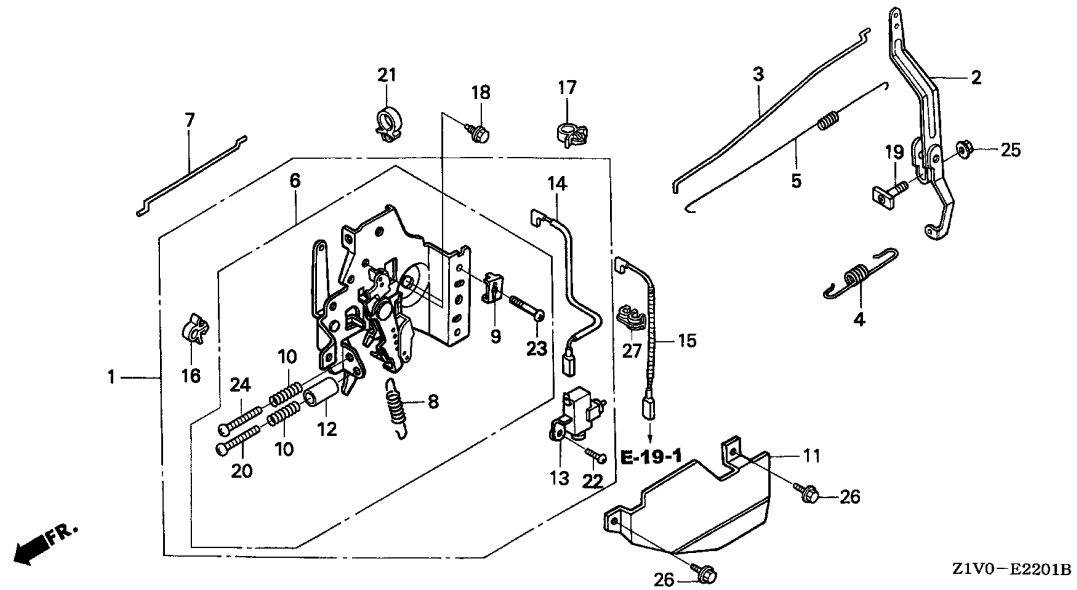
Ref. No.	Part No.	Description	Reqd. QTY		Serial No.	Parts catalogue code
			GXV	H2		
24	93500-05020-0A	SCREW, PAN, 5X20	1		-----	C12,N1,N4,N5,N5M,N6,N6S,SFC,SFL,SFL1,SFY,SFY1,T1AH
25	93500-05028-0A	SCREW, PAN, 5X28	1		-----	C12,N1,N4,N5,N5M,N6,N6S,T1AH
26	94050-06000	NUT, FLANGE, 6MM	1		-----	C12,N1,N4,N5,N5M,N6,N6S,SFC,SFL,SFL1,SFY,SFY1,T1AH
27	95701-06010-00	BOLT, FLANGE, 6X10	2		-----	C12,N1,N4,N5,N5M,N6,N6S,SFC,SFL,SFL1,SFY,SFY1,T1AH
28	46392-SC2-003	CLAMP, BRAKE PIPE (GRAY)	1		-----	N1,N4,N5,N5M,N6,N6S,SFL,SFL1,SFY,SFY1,T1AH
29	90505-MCT-000	CLAMP, PIPE	1		-----	C12,SFC



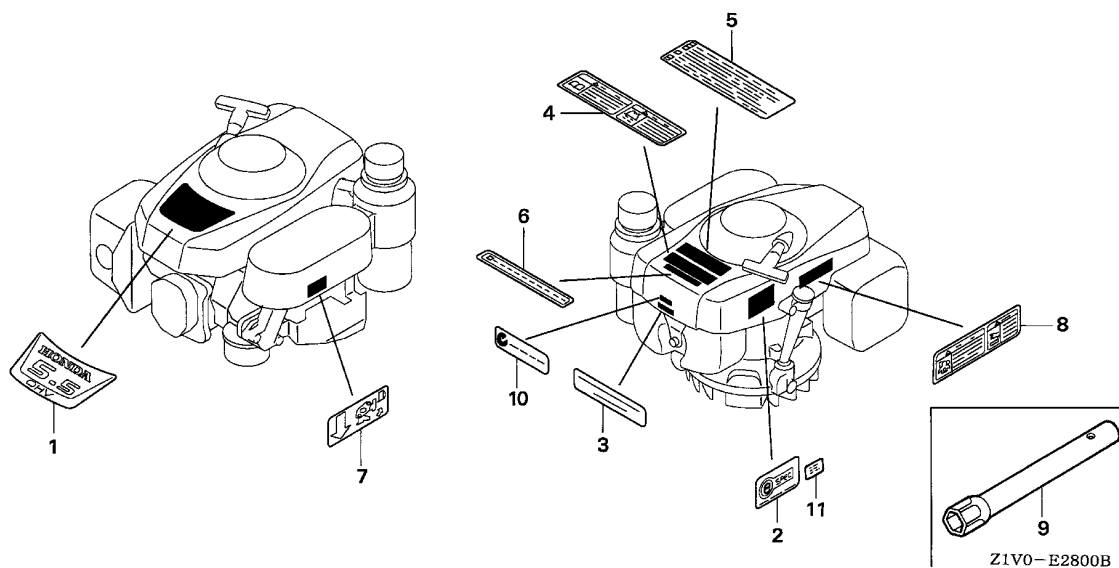


Ref. No.	L.O.N.	(Relative ref. Number) Description	F.R.T.
1	1161E1	CONTROL ASSEMBLY, THROTTLE/GOVERNOR	0.3
2	1161A0	ARM, GOVERNOR	0.3
3	1161B1	ROD, GOVERNOR	0.3
4	1161C5	SPRING, GOVERNOR	0.2
5	1161C2	SPRING, THROTTLE RETURN	0.3
6	1161D1	CONTROL, THROTTLE/GOVERNOR(A)	0.4
7	8101R5	ROD, GOVERNOR CHOKE CONTROL ..	0.2
8	1161C0	SPRING, LEVER	0.2
13	6151G0	SWITCH, ENGINE STOP(A)	0.2
14	6111B3	CORD, STOP SWITCH	0.2

Ref. No.	Part No.	Description	Reqd. QTY	Serial No.	Parts catalogue code
1	16500-ZE7-W11	CONTROL ASSY. (EN) (STD.)	1	-----	N1F,N15,N45,N55
2	16551-ZE7-000	ARM, GOVERNOR	1	-----	A1S,A1SA,A14,C14,N1F,N15,N45,N55
3	16555-ZE7-000	ROD, GOVERNOR	1	-----	A1S,A1SA,A14,C14,N1F,N15,N45,N55
4	16561-ZE7-020	SPRING, GOVERNOR	1	-----	A1S,A1SA,A14,C14,N1F,N15,N45,N55
5	16562-ZE6-000	SPRING, THROTTLE RETURN	1	-----	A1S,A1SA,A14,C14,N1F,N15,N45,N55
6	16570-ZE7-W00	CONTROL COMP. (STD.)	1	-----	A14,C14,N1F,N15,N45,N55
	16570-ZE7-W20	CONTROL COMP. (EN) (BRILL) ...	1	-----	A1S,A1SA
7	16573-ZE7-000	ROD, CHOKE	1	-----	A1S,A1SA,A14,C14,N1F,N15,N45,N55
8	16576-ZE7-300	SPRING, LEVER	1	-----	A1S,A1SA,A14,C14,N1F,N15,N45,N55
9	16576-891-000	HOLDER, CABLE	1	-----	A1S,A1SA,A14,C14,N1F,N15,N45,N55
10	16584-883-300	SPRING, CONTROL ADJUSTING ...	2	-----	A1S,A1SA,A14,C14,N1F,N15,N45,N55
11	16585-ZE7-000	PROTECTOR, CONTROL	1	-----	A1S,A1SA,A14,N1F,N15,N45,N55
12	16599-ZG1-M10	COLLAR, STOPPER	1	-----	A1S,A1SA,A14,C14,N1F,N15,N45,N55
13	36100-ZE7-013	SWITCH ASSY., ENGINE STOP ...	1	-----	N1F,N15,N45,N55
14	36101-ZE7-020	CORD, STOP SWITCH	1	-----	N1F,N15,N45,N55
15	32195-Z1V-810	CORD, STOP SWITCH (BRAKE) ...	1	-----	A1S,A1SA,A14,C14
16	36103-ZE1-000	HOLDER, STOP SWITCH CORD	1	-----	N1F,N15,N45,N55
17	46392-SC2-003	CLAMP, BRAKE PIPE (GRAY)	1	-----	N1F,N15,N45,N55
18	90013-883-000	BOLT, FLANGE, 6X12(CT200) ...	2	-----	A1S,A1SA,A14,C14,N1F,N15,N45,N55
19	90015-ZE5-010	BOLT, GOVERNOR ARM	1	-----	A1S,A1SA,A14,C14,N1F,N15,N45,N55
20	90016-ZE7-W00	SCREW, RECESSED, 5X28	1	-----	A1S,A1SA,A14,C14,N1F,N15,N45,N55
21	90659-680-013	CLIP, WIRE HARNESS	1	-----	A1S,A1SA,A14,C14,N1F,N15,N45,N55
22	93500-04008-0A	SCREW, PAN, 4X8	1	-----	N1F,N15,N45,N55
23	93500-05016-0A	SCREW, PAN, 5X16	1	-----	A1S,A1SA,A14,C14,N1F,N15,N45,N55
24	93500-05020-0A	SCREW, PAN, 5X20	1	-----	A1S,A1SA,A14,C14,N1F,N15,N45,N55



Ref. No.	Part No.	Description	Reqd. QTY		Serial No.	Parts catalogue code
			GXV 160 H2			
25	94050-06000	NUT, FLANGE, 6MM	1	-----	-----	A1S,A1SA,A14,C14,N1F,N15,N45,N55
26	95701-06010-00	BOLT, FLANGE, 6X10	2	-----	-----	A1S,A1SA,A14,N1F,N15,N45,N55
27	90505-MCT-000	CLAMP, PIPE	1	-----	-----	A1S,A1SA,A14,C14

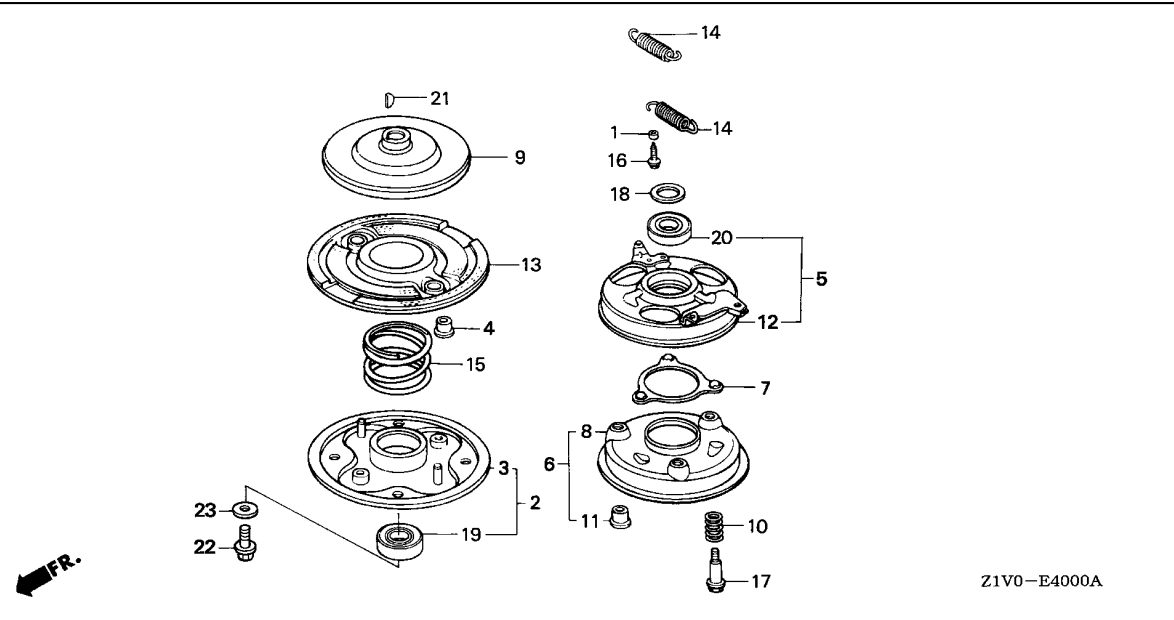


Ref. L.O.N. (Relative ref. Number) F.R.T.
No. Description

NO INFORMATION

2

Ref. No.	Part No.	Description	Reqd. QTY		Serial No.	Parts catalogue code
			GXV 160 H2			
1	87101-Z1V-000	MARK, EMBLEM	1			
2	87135-ZE2-020	LABEL, E-SPEC (15.5X27.5) ...	1	-----	-----	A14,C12,C14,N1,N1F,N4,N5,N6,N6S,SFC,SFL,SFL1,SFY1,T1AH
3	87504-Z1V-000	MARK, MANUFACTURER	1	-----	-----	N6S,SFL,SFL1,SFY1
4	87520-Z1V-000	MARK A, COMBINATION (JAPANESE)	1	-----	-----	A1S,A1SA,A14,C12,C14,N1,N1F,N15,N4,N45,N5,N5M,N55,N6,SFC,SFY,T1AH
5	87522-Z1V-000	LABEL, CAUTION	1	-----	-----	C12,C14,N4,SFC
6	87522-Z1V-800	LABEL, CAUTION (CHINESE)	1	-----	-----	SFC,SFL1,SFY,SFY1
7	87524-Z1V-000	MARK, FUEL COCK CAUTION	1	-----	-----	C12,C14,N1,N15,N4,N45,N5,N5M,N55,N6,T1AH
8	87526-Z1V-000	MARK B, COMBINATION (JAPANESE)	1	-----	-----	N4,N6,T1AH
9	99004-21002	WRENCH, BOX (P21)	1	-----	-----	
	99004-21003	1	-----	-----	
10	87637-ZM3-800	MARK (C-TICK)	1	-----	-----	
11	87114-ZH7-000	LABEL, WARNING (NOT CERTIFIED FOR SALE)	1	1149398	-----	N6



Z1V0-E4000A

Ref. L.O.N. (Relative ref. Number) F.R.T.
No. Description

NO INFORMATION

Ref. No.	Part No.	Description	Reqd. QTY		Serial No.	Parts catalogue code
			GXV 160 H2			
1	19512-883-000	COLLAR, FAN	2	-----	-----	SFL1,SFY1
2	72600-VA4-010	HOLDER ASSY., BLADE	1	-----	-----	SFL1,SFY1
3	72610-VA4-000	HOLDER COMP., BLADE	1	-----	-----	SFL1,SFY1
4	72613-VA4-000	BUSH, BLADE HOLDER	2	-----	-----	SFL1,SFY1
5	75090-VA4-030	PLATE ASSY., BALL CONTROL ...	1	-----	-----	SFL1,SFY1
6	75100-VA4-010	BRAKE COMP.	1	-----	-----	SFL1,SFY1
7	75110-VA4-000	RETAINER COMP., BALL	1	-----	-----	SFL1,SFY1
8	75120-VA4-010	DISK, BRAKE	1	-----	-----	SFL1,SFY1
9	75130-VA4-000	DISK, DRIVE	1	-----	-----	SFL1,SFY1
10	75132-VA4-000	SPRING, BRAKE HOLDER	3	-----	-----	SFL1,SFY1
11	75133-VA4-000	BUSH, BRAKE HOLDER	3	-----	-----	SFL1,SFY1
12	75140-VA4-020	PLATE COMP., BALL CONTROL ...	1	-----	-----	SFL1,SFY1
13	75150-VA3-J01	DISK COMP., DRIVEN	1	-----	-----	SFL1,SFY1
14	75182-VA3-J00	SPRING, CLUTCH RETURN (53.0MM)	2	-----	-----	SFL1,SFY1
15	75183-VA3-J00	SPRING, CLUTCH (36.6MM)	1	-----	-----	SFL1,SFY1
16	90014-952-000	BOLT, FLANGE, 6X14(CT200) ...	4	-----	-----	SFL1,SFY1
17	90021-VA4-000	BOLT, SPECIAL, 6MM	3	-----	-----	SFL1,SFY1
18	90501-952-010	WASHER, THRUST	1	-----	-----	SFL1,SFY1
19	91102-VA4-013	BEARING, RADIAL BALL, 6204 ..	1	-----	-----	SFL1,SFY1
20	91103-VA4-003	BEARING, RADIAL BALL, 60/22 ..	1	-----	-----	SFL1,SFY1
21	94401-16150	KEY, WOODRUFF, 16X15	1	-----	-----	SFL1,SFY1
22	90105-960-003	BOLT, HEX., 10X25	1	-----	-----	SFL1,SFY1
23	90409-952-000	WASHER, 10MM	1	-----	-----	SFL1,SFY1



PART NO. INDEX

E 2

Part Number	Address	Page	Ref.	Part Number	Address	Page	Ref.	Part Number	Address	Page	Ref.	Part Number	Address	Page	Ref.
80000					D7	39	27								
80103-MG2-000	D1	33	14	90551-ZE1-000	C5	21	12	95701-06010-00	C11	27	14				
				90581-Z1V-000	C12	28	4		D5	37	27				
				90601-ZE1-000	C3	19	33	95701-06012-08	D7	39	26				
87000				90602-ZE1-000	C3	19	34	95701-06035-00	C3	19	46				
87101-Z1V-000	D8	40	1	90653-723-000	D3	35	16	95701-08050-00	C15	31	11				
87114-ZH7-000	D8	40	11	90659-680-013	D4	36	21		C1	17	12				
87135-ZE2-020	D8	40	2		D6	38	21		C3	19	47				
87504-Z1V-000	D8	40	3	90701-ZE6-000	C3	19	35	96000							
87520-Z1V-000	D8	40	4	90702-ZE6-000	D3	35	17								
87522-Z1V-000	D8	40	5	90741-ZV4-000	C5	21	15	96100-62050-00	C3	19	48				
87522-Z1V-800	D8	40	6					98000							
87524-Z1V-000	D8	40	7	91000											
87526-Z1V-000	D8	40	8	91102-VA4-013	D9	41	19	98079-54846	C1	17	13				
87637-ZM3-800	D8	40	10	91103-VA4-003	D9	41	20	98079-54855	C1	17	13				
				91205-Z1V-003	C3	19	36	98079-55846	C1	17	13				
90000				91231-Z1V-003	C3	19	37	98079-55855	C1	17	13				
90001-ZE1-000	C5	21	10	91251-Z1V-003	C3	19	38	98079-56846	C1	17	13				
90003-ZH8-801	C11	27	13	91252-Z1V-003	C3	19	39	98079-56855	C1	17	13				
90010-GEO-710	D1	33	15	91301-Z1V-003	C3	19	40								
90012-ZE0-010	C6	22	13	91302-Z1V-003	C3	19	41	99000							
90013-883-000	C1	17	8					99004-21002	D8	40	9				
	C3	19	51	92000				99004-21003	D8	40	9				
	D4	36	18	92101-06012-0H	C8	24	11	99101-ZH8-0600	C14	30	21				
90014-952-000	D6	38	18					99101-ZH8-0620	C14	30	21				
	C1	17	14	93000				99101-ZH8-0650	C14	30	21				
	C3	19	26	93500-03006-1H	C13	29	20	99101-ZH8-0680	C14	30	21				
90014-Z1V-000	D1	33	16	93500-04008-0A	D3	35	18	99204-ZE0-0350	C14	30	22				
90015-883-000	C12	28	3		D4	36	22								
90015-ZE5-010	D4	36	19	93500-05016-0A	D6	38	22								
	D6	38	19		C3	19	42								
90015-ZE6-000	D3	35	12		D4	36	23								
90016-Z1V-000	D1	33	17	93500-05020-0A	D6	38	23								
90016-ZE7-W00	D4	36	20		D5	37	24								
	D6	38	20	93500-05028-0A	D6	38	24								
90017-883-000	C3	19	27		D5	37	25								
90018-ZE1-000	D3	35	13	94000											
90021-VA4-000	D9	41	17	94050-06000	C15	31	10								
90022-888-010	C3	19	28		D1	33	19								
90043-ZE6-000	C1	17	9		D5	37	26								
90048-ZC3-000	C1	17	10		D7	39	25								
90105-960-003	D9	41	22	94101-06800	C3	19	43								
90131-ZE1-000	C3	19	29	94102-12800	D3	35	19								
90201-Z1T-000	D2	34	6	94103-06000	D1	33	20								
	D3	35	14	94251-08000	C3	19	44								
90206-ZE1-000	C6	22	14	94301-08140	C3	19	45								
90300-Z1V-000	C15	31	9	94301-10160	C1	17	11								
90343-ZE6-000	C16	32	8	94401-16150	D9	41	21								
90401-ZE7-W00	C5	21	11												
90409-952-000	D9	41	23	95000											
90451-ZE1-000	C3	19	30												
90452-166-600	C3	19	31	95002-02080	D1	33	21								
90452-187-000	C3	19	32	95002-70000	D1	33	22								
90455-896-700	D1	33	18	95701-06008-00	C9	25	12								
90501-952-010	D9	41	18												
90505-MCT-000	D5	37	29												

3

PART NAME INDEX

Part name	Address	Page	Ref.	Part name	Address	Page	Ref.	Part name	Address	Page	Ref.
KNOB, RECOIL STARTER	C9	25	14	PIN, PISTON	C4	20	3	SCREW, PAN, 5X28	D5	37	25
	C10	26	10	PISTON	C4	20	2	SCREW, RECESSED, 5X28	D4	36	20
[L]				PIVOT, ROCKER ARM	C6	22	6		D6	38	20
LABEL, CAUTION	D8	40	5	PLATE ASSY., BALL CONTROL	D9	41	5	SCREW, SETTING	C11	27	13
				PLATE A, GUIDE	C3	19	49	SCREW, THROTTLE STOP	C13	29	10
LABEL, E-SPEC	D8	40	2	PLATE COMP., BALL CONTROL	D9	41	12	SEAL, VALVE STEM	C6	22	1
LABEL, WARNING	D8	40	11	PLATE, FRICTION	C8	24	5	SHAFT, DRIVE	C3	19	23
LEVER, COCK	C13	29	16		C10	26	5	SHAFT, GOVERNOR ARM	C2	18	20
LIFTER, VALVE	C6	22	5	PLATE, GOVERNOR SHAFT HOLDER ..	C2	18	18	SHAFT, GOVERNOR HOLDER	C2	18	17
[M]				PLATE, GUIDE	C2	18	5	SLIDER, GOVERNOR	C2	18	19
MARK	D8	40	10	PLATE, LEVER SETTING	C13	29	17	SPACER COMP., CARBURETOR	C13	29	14
MARK A, COMBINATION	D8	40	4	PLATE, PUSH ROD GUIDE	C6	22	12	SPONGE, FUEL CAP BREATHER	D1	33	11
MARK B, COMBINATION	D8	40	8	PLUG, SPARK	C1	17	13	SPRING, BRAKE	D3	35	8
MARK, EMBLEM	D8	40	1	PROTECTOR COMP., MUFFLER	C16	32	4	SPRING, BRAKE HOLDER	D9	41	10
MARK, FUEL COCK CAUTION	D8	40	7	PROTECTOR, CONTROL	D4	36	12	SPRING, BRAKE RETURN	D3	35	9
MARK, MANUFACTURER	D8	40	3		D6	38	11	SPRING, CLUTCH	D9	41	15
MUFFLER COMP.	C16	32	3	PULLEY COMP., STARTER	D2	34	3	SPRING, CLUTCH RETURN	D9	41	14
[N]					D3	35	2	SPRING, COCK LEVER	C13	29	18
NOZZLE, MAIN	C13	29	11	PULLEY, RECOIL STARTER	C8	24	3	SPRING, CONTROL ADJUSTING	D4	36	11
NUT, AIR CLEANER	C15	31	9						D6	38	10
NUT, FLANGE, 6MM	C15	31	10	[R]				SPRING, FRICTION	C8	24	6
	D1	33	19	RATCHET, STARTER	C8	24	4		C10	26	7
	D5	37	26		C10	26	4	SPRING, GOVERNOR	D4	36	4
	D7	39	25	REEL, RECOIL STARTER	C10	26	3		D6	38	4
NUT, PIVOT ADJUSTING	C6	22	14	RETAINER COMP., BALL	D9	41	7	SPRING, LEVER	D4	36	9
NUT, SELF-LOCK, 6MM	C16	32	8	RETAINER, IN. VALVE SPRING	C6	22	11		D6	38	8
NUT, SPECIAL, 14MM	D2	34	6	RING SET, PISTON	C4	20	1	SPRING, RECOIL STARTER	C8	24	7
	D3	35	14	ROD ASSY., CONNECTING	C4	20	4		C10	26	8
[O]				ROD, CHOKÉ	D4	36	8	SPRING, RETURN	C8	24	8
OIL SEAL, 12X20X6.5	C3	19	36		D6	38	7		C10	26	9
OIL SEAL, 25X38X7	C3	19	38	ROD, GOVERNOR	D4	36	3	SPRING, SWITCH CONTROL	D3	35	5
OIL SEAL, 25.4X40X7	C3	19	39		D6	38	3	SPRING, THROTTLE RETURN	D4	36	5
OIL SEAL, 6X11X4	C3	19	37	ROD, PUSH	C6	22	3		D6	38	5
O-RING, 22.1X2.2	C3	19	40	ROD, THROTTLE RETURN	D3	35	7	SPRING, VALVE	C6	22	10
O-RING, 25.5X3	C3	19	41	ROPE, RECOIL STARTER	C8	24	10	SPRING, WEIGHT RETURN	C6	22	7
[P]					C11	27	12	STARTER ASSY., RECOIL	C8	24	1
PACKING, BREATHER COVER	C2	18	9	RUBBER B, TANK MOUNTING	D1	33	6		C9	25	13
PACKING, CARBURETOR	C13	29	15	RUBBER, OIL RETURN	C2	18	10	STAY COMP., TANK	C10	26	1
PACKING, FUEL CAP	D1	33	12	RUBBER, SUPPORTER	D1	33	1	STRAINER, FUEL	D1	33	2
PACKING, FUEL COCK	C13	29	19	RUBBER, TANK MOUNTING	D1	33	9	SWITCH ASSY., ENGINE STOP	D3	35	4
PACKING, HEAD COVER	C1	17	7	RUBBER, TANK SETTING	D1	33	3		D4	36	14
PACKING, INSULATOR	C13	29	13	[S]					D6	38	13
PACKING, OIL PAN	C2	18	3	SCREW SET	C13	29	7	TANK COMP., FUEL	D1	33	4
PACKING, PROTECTOR	C16	32	2	SCREW SET, DRAIN	C13	29	6	TUBE, BREATHER	C15	31	1
PAN ASSY., OIL	C2	18	1	SCREW SET, PILOT	C13	29	5	TUBE, FUEL	D1	33	5
				SCREW, PAN, 3X6	C13	29	20	[T]			
PIN, GOVERNOR WEIGHT	C2	18	16	SCREW, PAN, 4X8	D3	35	18	[V]			
PIN, LOCK, 2.0	C3	19	35		D4	36	22	VALVE SET, FLOAT	C13	29	2
PIN, LOCK, 8MM	C3	19	44	SCREW, PAN, 5X16	C3	19	42	VALVE, BREATHER	C2	18	8
					D4	36	23	VALVE, EX.	C6	22	9
				SCREW, PAN, 5X20	D5	37	24	VALVE, IN.	C6	22	8
					D6	38	24				

PART NAME INDEX

F 3

Part name	Address	Page	Ref.	Part name	Address	Page	Ref.	Part name	Address	Page	Ref.
[W]											
WASHER, 10MM	D9	41	23								
WASHER, 10X21	C3	19	32								
WASHER, DRAIN PLUG, 10.2MM ...	C3	19	33								
WASHER, PLAIN, 12MM	D3	35	19								
WASHER, PLAIN, 6MM	C3	19	43								
	C12	28	4								
	D1	33	20								
WASHER, TANK MOUNTING	D1	33	18								
WASHER, THRUST	D9	41	18								
WASHER, THRUST, 12MM	C3	19	31								
WASHER, THRUST, 25.6MM	C5	21	11								
WASHER, THRUST, 6MM	C3	19	30								
WEIGHT, GOVERNOR	C2	18	14								
WRENCH, BOX	D8	40	9								

1

FOREWORD INDEX

2

ENGINE GROUP

3

PART NUMBER INDEX

4

PART NAME INDEX

HONDA
The Power of Dreams



PARTS CATALOGUE NEWS

Honda Motor Co., Ltd. Service Division

PARTS CATALOGUE - CORRECTED

Printed in Japan

CODE NO.	BOOKLET TYPE	13Z1V402
	MICRO-FICHE	13Z1V4EB/FB
PARTS CATALOGUE TITLE	GXV160H2	
NEWS NO.	001	

Block No.	Ref. No.	Note	Part No.	Description	Reqd. QTY	Serial No.	Parts catalogue code
					GXV 160 H2		
E-14	3		16013-ZE0-005	FLOAT SET	1	-----	A1S, A1SA, A14, N1, N1F, N15, N4, N45, N5M, N55, SFL, SFL1, SFY, SFY1 T1AH
				(CARBURETOR NO.)	1	-----	BE66J A C12, C14, N5, N6, SFC
				(CARBURETOR NO.)	1	-----	BE66M A N6S
	A		16013-ZOS-B01	1	BE66N A -----	C12, C14, N5, N6, N6S, SFC
				(CARBURETOR NO.)	1	-----	A1S, A1SA, A14, N1, N1F, N15, N4, N45, N5M, N55, SFL, SFL1, SFY, SFY1 T1AH
				(CARBURETOR NO.)	1	-----	BE66J A C12, C14, N5, N6, SFC
	8		16045-ZE7-005	CHOKE SET	1	-----	A1S, A1SA, A14, N1, N1F, N15, N4, N45, N5M, N55, SFL, SFL1, SFY, SFY1 T1AH
				(CARBURETOR NO.)	1	-----	BE66J A C12, C14, N5, N6, SFC
				(CARBURETOR NO.)	1	-----	BE66M A N6S
	A		16044-ZE0-005	1	BE66N A -----	C12, C14, N5, N6, N6S, SFC
				(CARBURETOR NO.)	1	-----	A1S, A1SA, A14, N1, N1F, N15, N4, N45, N55, SFL, SFL1, SFY, SFY1, T1AH
				(CARBURETOR NO.)	1	-----	BE66J A C12, C14, N5, N6, N6S, SFC
11	L	16166-Z1V-003	NOZZLE, MAIN	1	-----	A1S, A1SA, A14, N1, N1F, N15, N4, N45, N55, SFL, SFL1, SFY, SFY1, T1AH	
			(CARBURETOR NO.)	1	-----	BE66J A C12, C14, N5, N6, N6S, SFC	
			(CARBURETOR NO.)	1	-----	N5M	
T		16166-Z1V-J71	1	-----	N5M	

NOTE A:PART NO. CHANGE D:NEWLY PROVIDED E:PART NO. DELETION K:REQUIRED NO. CORRECTION L:APPLICATION SERIAL NO. CORRECTION
 T:APPLICATION CORRECTION Z:REMARKS CHANGE

PARTS CATALOGUE NEWS

BOOKNo. : 13Z1V402

Block No.	Ref. No.	Note	Part No.	Description	Reqd. QTY	Serial No.			Parts catalogue code
					GXV 160 H2				
				(CARBURETOR NO.)	1	BE66M A	BE66M A	N6S	
		A	16166-Z1V-801	1	BE66N A	-----	C12, C14, N5, N6, N6S, SFC	
	21	K	99101-ZH8-0600	JET, MAIN, #60	(1)	-----	-----	A1S, A1SA, A14, N1, N1F, N15, N4, N45, N55, SFL, SFL1, SFY, SFY1, T1AH	
				(CARBURETOR NO.)	(1)	-----	BE66J A	C12, C14, N5, N6, N6S, SFC	
			99101-ZH8-0650	JET, MAIN, #65	1	-----	-----	A1S, A1SA, A14, N1, N1F, N15, N4, N45, N55, SFL, SFL1, SFY, SFY1, T1AH	
				(CARBURETOR NO.)	1	-----	BE66J A	C12, C14, N5, N6, N6S, SFC	
				(CARBURETOR NO.)	(1)	-----	-----	N5M	
				(CARBURETOR NO.)	(1)	BE66M A	-----	N6S	
				(CARBURETOR NO.)	(1)	BE66N A	-----	C12, C14, N5, N6, SFC	
		A	99101-ZH8-0680	JET, MAIN, #68 (CARBURETOR NO.)	1	BE66M A	-----	N6S	
				(CARBURETOR NO.)	1	BE66N A	-----	C12, C14, N5, N6, SFC	

NOTE A:PART NO. CHANGE D:NEWLY PROVIDED E:PART NO.DELETION K:REQUIRED NO. CORRECTION L:APPLICATION SERIAL NO. CORRECTION
T:APPLICATION CORRECTION Z:REMARKS CHANGE



PARTS CATALOGUE NEWS

Honda Motor Co., Ltd. Service Division

Printed in Japan

February 19, 2006

CODE NO.	BOOKLET TYPE	13Z1V402
	MICRO- FICHE	13Z1V4EB/FB
PARTS CATALOGUE TITLE	GXV160H2	
NEWS NO.	002	

GXV160H2-N4C TYPE sales information

NOTE: This Parts Catalogue News explains only the parts of the different model that are produced to conform to addition of the GXV160H2-N4C type.

As for the parts not listed on this Parts Catalogue News, use the parts of the GXV160H2-N4 type.

BOOKNo. : 13Z1V402

• **Models, parts catalogue codes and applicable serial numbers**

Model	Type		Parts catalogue type	Applicable engine serial No.	Applicable carburetor identification No.
GXV160H2	N4	Base type	N4	GJAAH-1000001~ 9999999	BE66J A
	N4C	Additional type	N4C	GJAAH-1000001~	BE66N A

• **Features of each type**

		Base type	Additional type
Specifications	Model	GXV160H2	
	Type	N4	N4C
Crankshaft	22mm Ø Straight		
	22.2mm Ø Straight		
	25.4mm Ø Straight (Flat key-way)	●	●
	25.4mm Ø Straight		
	17mm Ø Stepped thread		
	20mm Ø Stepped thread		
	23mm Ø Tapered		
Flywheel brake			

NOTE A: PART NO. CHANGE D: NEWLY PROVIDED E: PART NO. DELETION K: REQUIRED NO. CORRECTION L: APPLICATION SERIAL NO. CORRECTION
T: APPLICATION CORRECTION Z: REMARKS CHANGE

PARTS CATALOGUE NEWS

BOOKNo. :13Z1V402

Block No.	Ref. No.	Part No.	Description	Reqd. QTY	Base Part No.	Parts catalogue code
				GXV 160 H2		
E-3	1	11300-Z1V-406	PAN ASSY., OIL	1	11300-Z1V-000	
	4		BARREL ASSY., CYLINDER	(0)	12000-ZE7-405	
E-14	3	16013-Z0S-B01	FLOAT SET	1	16013-ZE0-005	
	8	16044-ZE0-005	CHOKE SET	1	16045-ZE7-005	
	9	16100-Z1V-801	CARBURETOR ASSY. (BE66N A) ...	1	16100-Z1V-003	
	11	16166-Z1V-801	NOZZLE, MAIN	1	16166-Z1V-003	
	21	99101-ZH8-0680	JET, MAIN, #68	1	99101-ZH8-0650	
E-28	2		LABEL, E-SPEC (15.5X27.5)	0	87135-ZE2-020	
	5		LABEL, CAUTION	0	87522-Z1V-000	
	6		LABEL, CAUTION (CHINESE)	0	87522-Z1V-800	
	10		MARK (C-TICK)	0	87637-ZM3-800	
	11	87114-ZH7-000	LABEL, WARNING (NOT CERTIFIED FOR SALE)	1		

NOTE A:PART NO. CHANGE D:NEWLY PROVIDED E:PART NO.DELETION K:REQUIRED NO. CORRECTION L:APPLICATION SERIAL NO. CORRECTION
T:APPLICATION CORRECTION Z:REMARKS CHANGE



PARTS CATALOGUE NEWS

Honda Motor Co., Ltd. Service Division

PARTS CATALOGUE - CORRECTED

Printed in Japan

CODE NO.	BOOKLET TYPE	13Z1V402
	MICRO-FICHE	13Z1V4EB/FB
PARTS CATALOGUE NEWS	GXV160H2	
NEWS NO.	003	

Block No.	Ref. No.	Note	Part No.	Description	Reqd. QTY	Serial No.	Parts catalogue code
					GXV 160 H2		
E-3	1	E	11300-Z1V-000	*PARTS NO. DELETION			
		T	11300-Z1V-406	PAN ASSY., OIL	1	-----	A1S, A1SA, A14, C12, C14, N1, N1F, N15, N4, N4C, N45, N5, N55, N6, T1AH
	2	E	11300-Z1V-800	*PARTS NO. DELETION			
		D	11300-Z1V-407	PAN ASSY., OIL	1	-----	N6S, SFC, SFL, SFL1, SFY1

NOTE A:PART NO. CHANGE D:NEWLY PROVIDED E:PART NO.DELETION K:REQUIRED NO. CORRECTION L:APPLICATION SERIAL NO. CORRECTION T:APPLICATION CORRECTION Z:REMARKS CHANGE



PARTS CATALOGUE NEWS

Honda Motor Co., Ltd. Service Division

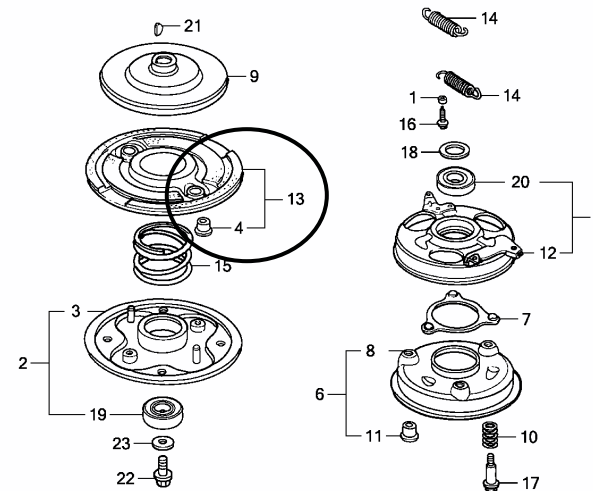
PARTS CATALOGUE - CORRECTED

Printed in Japan

CODE NO.	BOOKLET TYPE	13Z1V402
	MICRO-FICHE	13Z1V4EB/FB
PARTS CATALOGUE NEWS	GXV160H2	
NEWS NO.	004	

Block No.	Ref. No.	Note	Part No.	Description	Reqd. QTY	Serial No.	Parts catalogue code
E-40				BLADE HOLDER	GXV 160 H2		

ILLUSTRATION CORRECTED



Z1V0E4000B

NOTE A:PART NO. CHANGE D:NEWLY PROVIDED E:PART NO.DELETION K:REQUIRED NO. CORRECTION L:APPLICATION SERIAL NO. CORRECTION
T:APPLICATION CORRECTION Z:REMARKS CHANGE



PARTS CATALOGUE NEWS

Honda Motor Co., Ltd. Service Division

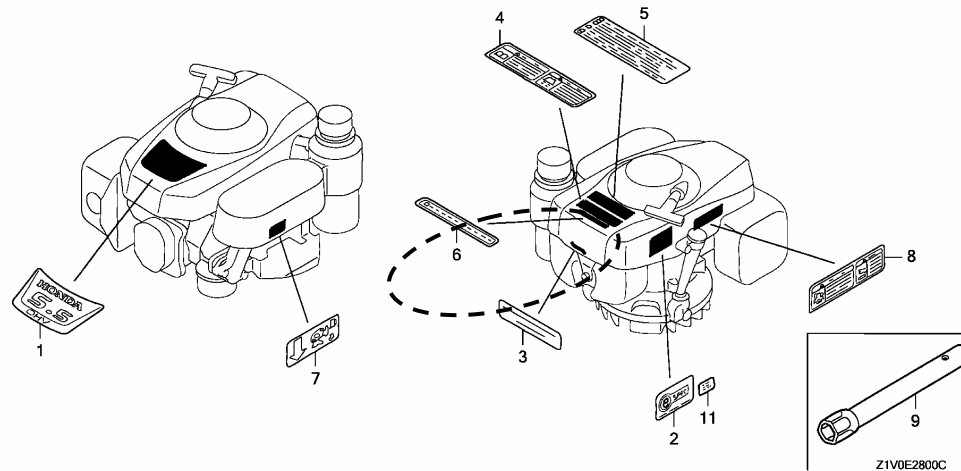
PARTS CATALOGUE - CORRECTED

Printed in Japan

CODE NO.	BOOKLET TYPE	13Z1V402
	MICRO-FICHE	13Z1V4EB/FB
PARTS CATALOGUE NEWS	GXV160H2	
NEWS NO.	005	

Block No.	Ref. No.	Note	Part No.	Description	Reqd. QTY	Serial No.	Parts catalogue code
E-28					GXV 160 H2		

E-28 LABEL/TOOL



E-28 10 E 87637-ZM3-800 *PARTS NO. DELETION

NOTE A:PART NO. CHANGE D:NEWLY PROVIDED E:PART NO.DELETION K:REQUIRED NO. CORRECTION L:APPLICATION SERIAL NO. CORRECTION
T:APPLICATION CORRECTION Z:REMARKS CHANGE



PARTS CATALOGUE NEWS

Honda Motor Co., Ltd. Service Division

PARTS CATALOGUE - CORRECTED

Printed in Japan

CODE NO.	BOOKLET TYPE	13Z1V402
	MICRO-FICHE	13Z1V4EB/FB
PARTS CATALOGUE NEWS	GXV160H2	
NEWS NO.	006	

Block No.	Ref. No.	Note	Part No.	Description	Reqd. QTY	Serial No.	Parts catalogue code
					GXV 160 H2		
E-3	4	T	12000-Z1V-000	BARREL ASSY., CYLINDER	1	-----	A1S, A1SA, A14
		T	12000-Z2J-000	1	-----	N1, N1F, N15, N4, N45, N5M, N55, SFL, SFL1, SFY, SFY1, T1AH
		D	12000-Z1V-405	1	-----	C12, C14, SFC
		D	12000-Z2J-405	1	-----	N4C, N5, N6, N6S

NOTE A:PART NO. CHANGE D:NEWLY PROVIDED E:PART NO.DELETION K:REQUIRED NO. CORRECTION L:APPLICATION SERIAL NO. CORRECTION
T:APPLICATION CORRECTION Z:REMARKS CHANGE



PARTS CATALOGUE NEWS

Honda Motor Co., Ltd. Service Division

PARTS CATALOGUE - CORRECTED

Printed in Japan

CODE NO.	BOOKLET TYPE	13Z1V402
	MICRO-FICHE	13Z1V4EB/FB
PARTS CATALOGUE NEWS	GXV160H2	
NEWS NO.	007	

Block No.	Ref. No.	Note	Part No.	Description	Reqd. QTY		Serial No.	Parts catalogue code
					GXV 160 H2			
E-14	8	E	16044-ZE0-005	*PARTS NO. DELETION				
		D	16045-Z1V-G01	CHOKE SET	1	-----	-----	N4C
				(CARBURETOR NO.)	1	BE66N A	-----	C12, C14, N5, N6, N6S, SFC

NOTE A:PART NO. CHANGE D:NEWLY PROVIDED E:PART NO.DELETION K:REQUIRED NO. CORRECTION L:APPLICATION SERIAL NO. CORRECTION
T:APPLICATION CORRECTION Z:REMARKS CHANGE



PARTS CATALOGUE NEWS

Honda Motor Co., Ltd. Service Division

PARTS CATALOGUE - CORRECTED

Printed in Japan

CODE NO.	BOOKLET TYPE	13Z1V402
	MICRO-FICHE	13Z1V4EB/FB
PARTS CATALOGUE NEWS	GXV160H2	
NEWS NO.	008	

Block No.	Ref. No.	Note	Part No.	Description	Reqd. QTY	Serial No.	Parts catalogue code
					GXV 160 H2		
E-7	1		13010-ZL0-003	RING SET, PISTON (STD.)	1	-----	A1S, A1SA, A14, N1, N1F, N15, N4, N45, N5M, N55, SFL, SFL1, SFY, SFY1 T1AH
				(TEIKOKU)	1	-----	1250645
			13010-ZL0-004	RING SET, PISTON (STD.)	1	-----	A1S, A1SA, A14, N1, N1F, N15, N4, N45, N5M, N55, SFL, SFL1, SFY, SFY1 T1AH
				(NIPPON)	1	-----	1250645
			13011-ZL0-003	RING SET, PISTON (0.25)	(1)	-----	A1S, A1SA, A14, N1, N1F, N15, N4, N45, N5M, N55, SFL, SFL1, SFY, SFY1 T1AH
				(TEIKOKU)	(1)	-----	1250645
			13011-ZL0-004	RING SET, PISTON (0.25)	(1)	-----	A1S, A1SA, A14, N1, N1F, N15, N4, N45, N5M, N55, SFL, SFL1, SFY, SFY1 T1AH
				(NIPPON)	(1)	-----	1250645

NOTE A:PART NO. CHANGE D:NEWLY PROVIDED E:PART NO.DELETION K:REQUIRED NO. CORRECTION L:APPLICATION SERIAL NO. CORRECTION
T:APPLICATION CORRECTION Z:REMARKS CHANGE

PARTS CATALOGUE NEWS

BOOKNo. : 13Z1V402

Block No.	Ref. No.	Note	Part No.	Description	Reqd. QTY	Serial No.		Parts catalogue code
					GXV 160 H2			
			13012-ZL0-003	RING SET, PISTON (0.50) (TEIKOKU)	(1)	-----	-----	A1S, A1SA, A14, N1, N1F, N15, N4, N45, N5M, N55, SFL, SFL1, SFY, SFY1 T1AH
					(1)	-----	1250645	C12, C14, N4C, N5, N6, N6S, SFC
			13012-ZL0-004	RING SET, PISTON (0.50) (NIPPON)	(1)	-----	-----	A1S, A1SA, A14, N1, N1F, N15, N4, N45, N5M, N55, SFL, SFL1, SFY, SFY1 T1AH
					(1)	-----	1250645	C12, C14, N4C, N5, N6, N6S, SFC
			13013-ZL0-003	RING SET, PISTON (0.75) (TEIKOKU)	(1)	-----	-----	A1S, A1SA, A14, N1, N1F, N15, N4, N45, N5M, N55, SFL, SFL1, SFY, SFY1 T1AH
					(1)	-----	1250645	C12, C14, N4C, N5, N6, N6S, SFC
			13013-ZL0-004	RING SET, PISTON (0.75) (NIPPON)	(1)	-----	-----	A1S, A1SA, A14, N1, N1F, N15, N4, N45, N5M, N55, SFL, SFL1, SFY, SFY1 T1AH
					(1)	-----	1250645	C12, C14, N4C, N5, N6, N6S, SFC
	A		13010-Z4K-004	RING SET, PISTON (STD.) (TEIKOKU)	1	1250646	-----	C12, C14, N4C, N5, N6, N6S, SFC
	A		13010-Z4P-003	RING SET, PISTON (STD.) (RIKEN)	1	1250646	-----	C12, C14, N4C, N5, N6, N6S, SFC
	A		13011-Z4K-004	RING SET, PISTON (0.25) (TEIKOKU)	(1)	1250646	-----	C12, C14, N4C, N5, N6, N6S, SFC
	A		13011-Z4P-003	RING SET, PISTON (0.25) (RIKEN)	(1)	1250646	-----	C12, C14, N4C, N5, N6, N6S, SFC
	A		13012-Z4K-004	RING SET, PISTON (0.50) (TEIKOKU)	(1)	1250646	-----	C12, C14, N4C, N5, N6, N6S, SFC
	A		13012-Z4P-003	RING SET, PISTON (0.50) (RIKEN)	(1)	1250646	-----	C12, C14, N4C, N5, N6, N6S, SFC
	A		13013-Z4K-004	RING SET, PISTON (0.75) (TEIKOKU)	(1)	1250646	-----	C12, C14, N4C, N5, N6, N6S, SFC
	A		13013-Z4P-003	RING SET, PISTON (0.75) (RIKEN)	(1)	1250646	-----	C12, C14, N4C, N5, N6, N6S, SFC
	2		13101-ZH8-010	PISTON (STD.)	1	-----	-----	A1S, A1SA, A14, N1, N1F, N15, N4, N45, N5M, N55, SFL, SFL1, SFY, SFY1 T1AH
					1	-----	1250645	C12, C14, N4C, N5, N6, N6S, SFC

NOTE A:PART NO. CHANGE D:NEWLY PROVIDED E:PART NO.DELETION K:REQUIRED NO. CORRECTION L:APPLICATION SERIAL NO. CORRECTION
T:APPLICATION CORRECTION Z:REMARKS CHANGE

PARTS CATALOGUE NEWS

BOOKNo. : 13Z1V402

Block No.	Ref. No.	Note	Part No.	Description	Reqd. QTY		Serial No.	Parts catalogue code
					GXV 160 H2			
			13101-Z1T-000	PISTON (STD.) (JIALING-HONDA)	1		-----	A1S, A1SA, A14, N1, N1F, N15, N4, N45, N5M, N55, SFL, SFL1, SFY, SFY1 T1AH
					1		-----	1250645 C12, C14, N4C, N5, N6, N6S, SFC
			13102-ZE7-020	PISTON (0.25)	(1)		-----	A1S, A1SA, A14, N1, N1F, N15, N4, N45, N5M, N55, SFL, SFL1, SFY, SFY1 T1AH
					(1)		-----	1250645 C12, C14, N4C, N5, N6, N6S, SFC
			13103-ZE7-020	PISTON (0.50)	(1)		-----	A1S, A1SA, A14, N1, N1F, N15, N4, N45, N5M, N55, SFL, SFL1, SFY, SFY1 T1AH
					(1)		-----	1250645 C12, C14, N4C, N5, N6, N6S, SFC
			13104-ZE7-020	PISTON (0.75)	(1)		-----	A1S, A1SA, A14, N1, N1F, N15, N4, N45, N5M, N55, SFL, SFL1, SFY, SFY1 T1AH
					(1)		-----	1250645 C12, C14, N4C, N5, N6, N6S, SFC
		A	13101-ZH8-020	PISTON (STD.)	1	1250646	-----	C12, C14, N4C, N5, N6, N6S, SFC
		A	13101-Z1T-010	PISTON (STD.) (JIALING-HONDA)	1	1250646	-----	C12, C14, N4C, N5, N6, N6S, SFC
		A	13102-ZH8-020	PISTON (0.25)	1	1250646	-----	C12, C14, N4C, N5, N6, N6S, SFC
		A	13103-ZH8-020	PISTON (0.50)	1	1250646	-----	C12, C14, N4C, N5, N6, N6S, SFC
		A	13104-ZH8-020	PISTON (0.75)	1	1250646	-----	C12, C14, N4C, N5, N6, N6S, SFC
E-12	2		30500-Z1V-003	COIL ASSY., IGNITION	1		-----	A1S, A1SA, A14, N1, N1F, N15, N4, N45, N5M, N55, SFL, SFL1, SFY, SFY1 T1AH
					1		-----	1224256 C12, C14, N4C, N5, N6, N6S, SFC
		A	30500-Z1V-013		1	1224257	-----	C12, C14, N4C, N5, N6, N6S, SFC

NOTE A:PART NO. CHANGE D:NEWLY PROVIDED E:PART NO. DELETION K:REQUIRED NO. CORRECTION L:APPLICATION SERIAL NO. CORRECTION
T:APPLICATION CORRECTION Z:REMARKS CHANGE



PARTS CATALOGUE NEWS

Honda Motor Co., Ltd. Service Division

PARTS CATALOGUE - CORRECTED

Printed in Japan

CODE NO.	BOOKLET TYPE	13Z1V402
	MICRO-FICHE	13Z1V4EB/FB
PARTS CATALOGUE NEWS	GXV160H2	
NEWS NO.	009	

Block No.	Ref. No.	Note	Part No.	Description	Reqd. QTY	Serial No.		Parts catalogue code
					GXV 160 H2			
E-2	8		90013-883-000	BOLT, FLANGE, 6X12(CT200)	3	-----	-----	A1S, A1SA, A14, N1, N1F, N15, N4, N45, N5M, N55, SFL, SFL1, SFY, SFY1 T1AH
					3	-----	1206437	C12, C14, N4C, N5, N6, N6S, SFC
					3	1206438	-----	C12, C14, N4C, N5, N6, N6S, SFC
E-3	23		23411-ZE7-000	SHAFT, DRIVE	1	-----	-----	SFL, SFL1, SFY1
					1	-----	1182612	N6S, SFC
					1	1182613	-----	N6S, SFC
E-22-1	11	T	16585-ZE7-000	PROTECTOR, CONTROL	1	-----	-----	A1S, A1SA, A14, N1F, N15, N45, N55
					1	1203638	-----	C14
					2	-----	-----	A1S, A1SA, A14, N1F, N15, N45, N55
E-28	2	L	87135-ZE2-020	LABEL, E-SPEC (15.5X27.5)	1	-----	-----	A14, N1F, N6S, SFL, SFL1, SFY1
					1	-----	1170174	C12, C14, N1, N4, N5, N6, SFC, T1AH

NOTE A:PART NO. CHANGE D:NEWLY PROVIDED E:PART NO.DELETION K:REQUIRED NO. CORRECTION L:APPLICATION SERIAL NO. CORRECTION
T:APPLICATION CORRECTION Z:REMARKS CHANGE

PARTS CATALOGUE NEWS

BOOKNo. : 13Z1V402

Block No.	Ref. No.	Note	Part No.	Description	Reqd. QTY		Serial No.	Parts catalogue code
					6XV 160 H2			
	5	T	87522-Z1V-000	LABEL, CAUTION	1		-----	A1S, A1SA, A14, C12, C14, N1, N1F, N15, N4, N45, N5, N5M, N55, N6, SFC SFY, T1AH
					1	1192411	-----	N4C
	6	T	87522-Z1V-800	LABEL, CAUTION (CHINESE)	1		-----	C12, C14, N4, SFC
					1	1192411	-----	N4C
E-40	1	L	19512-883-000	COLLAR, FAN	2		-----	1134367 SFL1, SFY1
	2	L	72600-VA4-010	HOLDER ASSY., BLADE	1		-----	1134367 SFL1, SFY1
	3	L	72610-VA4-000	HOLDER COMP., BLADE	1		-----	1134367 SFL1, SFY1
	4	L	72613-VA4-000	BUSH, BLADE HOLDER	2		-----	1134367 SFL1, SFY1
	5	L	75090-VA4-030	PLATE ASSY., BALL CONTROL	1		-----	1134367 SFL1, SFY1
	6	L	75100-VA4-010	BRAKE COMP.	1		-----	1134367 SFL1, SFY1
	7	L	75110-VA4-000	RETAINER COMP., BALL	1		-----	1134367 SFL1, SFY1
	8	L	75120-VA4-010	DISK, BRAKE	1		-----	1134367 SFL1, SFY1
	9	L	75130-VA4-000	DISK, DRIVE	1		-----	1134367 SFL1, SFY1
	10	L	75132-VA4-000	SPRING, BRAKE HOLDER	3		-----	1134367 SFL1, SFY1
	11	L	75133-VA4-000	BUSH, BRAKE HOLDER	3		-----	1134367 SFL1, SFY1
	12	L	75140-VA4-020	PLATE COMP., BALL CONTROL	1		-----	1134367 SFL1, SFY1
	13	L	75150-VA3-J01	DISK COMP., DRIVEN	1		-----	1134367 SFL1, SFY1
	14	L	75182-VA3-J00	SPRING, CLUTCH RETURN (53.0MM)	2		-----	1134367 SFL1, SFY1
	15	L	75183-VA3-J00	SPRING, CLUTCH (36.6MM)	1		-----	1134367 SFL1, SFY1
	16	L	90014-952-000	BOLT, FLANGE, 6X14(CT200)	4		-----	1134367 SFL1, SFY1
	17	L	90021-VA4-000	BOLT, SPECIAL, 6MM	3		-----	1134367 SFL1, SFY1
	18	L	90501-952-010	WASHER, THRUST	1		-----	1134367 SFL1, SFY1
	19	L	91102-VA4-013	BEARING, RADIAL BALL, 6204	1		-----	1134367 SFL1, SFY1
	20	L	91103-VA4-003	BEARING, RADIAL BALL, 60/22	1		-----	1134367 SFL1, SFY1

NOTE A:PART NO. CHANGE D:NEWLY PROVIDED E:PART NO.DELETION K:REQUIRED NO. CORRECTION L:APPLICATION SERIAL NO. CORRECTION
T:APPLICATION CORRECTION Z:REMARKS CHANGE

PARTS CATALOGUE NEWS

BOOKNo. : 13Z1V402

Block No.	Ref. No.	Note	Part No.	Description	Reqd. QTY GXV 160 H2	Serial No.	Parts catalogue code
	21	L	94401-16150	KEY, WOODRUFF, 16X15	1	----- 1134367	SFL1, SFY1
	22	L	90105-960-003	BOLT, HEX., 10X25	1	----- 1134367	SFL1, SFY1
	23	L	90409-952-000	WASHER, 10MM	1	----- 1134367	SFL1, SFY1

NOTE A:PART NO. CHANGE D:NEWLY PROVIDED E:PART NO.DELETION K:REQUIRED NO. CORRECTION L:APPLICATION SERIAL NO. CORRECTION
T:APPLICATION CORRECTION Z:REMARKS CHANGE



PARTS CATALOGUE NEWS

Honda Motor Co., Ltd. Service Division

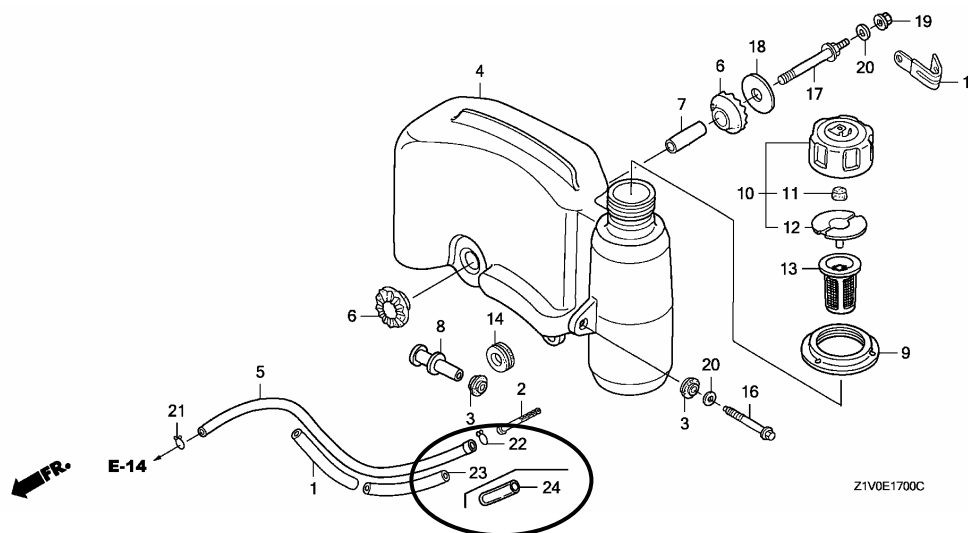
PARTS CATALOGUE - CORRECTED

Printed in Japan

CODE NO.	BOOKLET TYPE	13Z1V402
	MICRO-FICHE	13Z1V4EB/FB
PARTS CATALOGUE NEWS	GXV160H2	
NEWS NO.	010	

Block No.	Ref. No.	Note	Part No.	Description	Reqd. QTY	Serial No.	Parts catalogue code
E-17					GXV 160 H2		

E-17 FUEL TANK



E-17	1	K	16854-ZH8-000	RUBBER, SUPPORTER (107MM)	1		
------	---	---	---------------	--------------------------------	---	--	--

NOTE A:PART NO. CHANGE D:NEWLY PROVIDED E:PART NO.DELETION K:REQUIRED NO. CORRECTION L:APPLICATION SERIAL NO. CORRECTION
T:APPLICATION CORRECTION Z:REMARKS CHANGE

PARTS CATALOGUE NEWS

BOOKNo. : 13Z1V402

Block No.	Ref. No.	Note	Part No.	Description	Reqd. QTY	Serial No.		Parts catalogue code
					GXV 160 H2			
	5		17512-ZE7-000	TUBE, FUEL	1	-----	-----	A1S, A1SA, A14, N1, N1F, N15, N4, N45, N5M, N55, SFL, SFL1, SFY, SFY1 T1AH
					1	-----	1276790	C12, C14, N4C, N5, N6, N6S, SFC
	A		17512-ZE7-010	1	1276791	-----	C12, C14, N4C, N5, N6, N6S, SFC
	23	D	16854-ZH8-000	RUBBER, SUPPORTER (107MM)	1	-----	-----	A1S, A1SA, A14, N1, N1F, N15, N4, N45, N5M, N55, SFL, SFL1, SFY, SFY1 T1AH
					1	-----	1276790	C12, C14, N4C, N5, N6, N6S, SFC
	24	D	95003-25003-20	TUBE, VINYL, 9X11X30 (95003-25001-10M)	1	1276791	-----	C12, C14, N4C, N5, N6, N6S, SFC

NOTE A:PART NO. CHANGE D:NEWLY PROVIDED E:PART NO.DELETION K:REQUIRED NO. CORRECTION L:APPLICATION SERIAL NO. CORRECTION
T:APPLICATION CORRECTION Z:REMARKS CHANGE



PARTS CATALOGUE NEWS

Honda Motor Co., Ltd. Service Division

PARTS CATALOGUE - CORRECTED

Printed in Japan

CODE NO.	BOOKLET TYPE	13Z1V402
	MICRO- FICHE	13Z1V4EB/FB
PARTS CATALOGUE NEWS	GXV160H2	
NEWS NO.	011	

Block No.	Ref. No.	Note	Part No.	Description	Reqd. QTY	Serial No.	Parts catalogue code
					GXV 160 H2		
E-14	9	L	16100-Z1V-003	CARBURETOR ASSY. (BE66J A) ...	1	-----	A1S, A1SA, A14, N1, N1F, N15, N4, N45, N55, N6S, SFL, SFL1, SFY, SFY1 T1AH
					1	-----	1095195
	T	16100-Z1V-801	CARBURETOR ASSY. (BE66N A) ...	1	-----	-----	N4C
				1	1095196	-----	C12, C14, N5, N6, SFC

NOTE A:PART NO. CHANGE D:NEWLY PROVIDED E:PART NO.DELETION K:REQUIRED NO. CORRECTION L:APPLICATION SERIAL NO. CORRECTION
T:APPLICATION CORRECTION Z:REMARKS CHANGE



PARTS CATALOGUE NEWS

Honda Motor Co., Ltd. Service Division

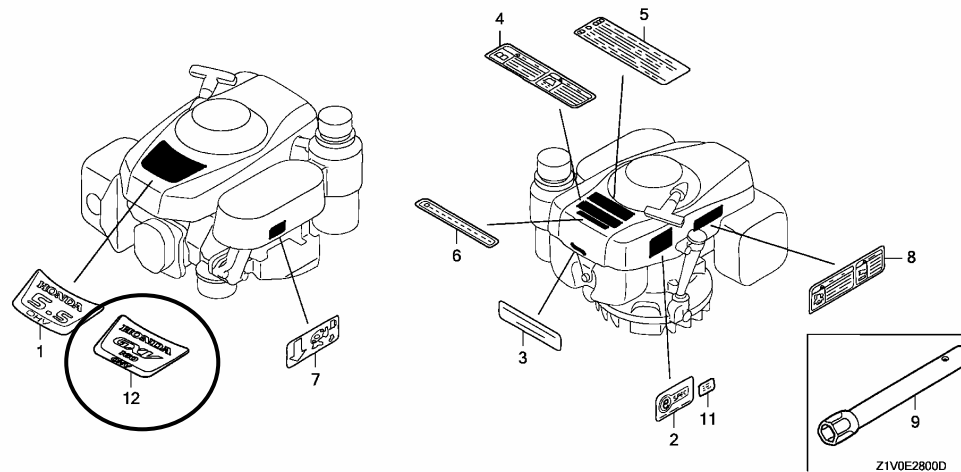
PARTS CATALOGUE - CORRECTED

Printed in Japan

CODE NO.	BOOKLET TYPE	13Z1V402
	MICRO-FICHE	13Z1V4EB/FB
PARTS CATALOGUE NEWS	GXV160H2	
NEWS NO.	012	

Block No.	Ref. No.	Note	Part No.	Description	Reqd. QTY	Serial No.	Parts catalogue code
E-28					GXV 160 H2		

E-28 LABEL/TOOL



NOTE A:PART NO. CHANGE D:NEWLY PROVIDED E:PART NO.DELETION K:REQUIRED NO. CORRECTION L:APPLICATION SERIAL NO. CORRECTION
T:APPLICATION CORRECTION Z:REMARKS CHANGE

PARTS CATALOGUE NEWS

BOOKNo. : 13Z1V402

Block No.	Ref. No.	Note	Part No.	Description	Reqd. QTY	Serial No.		Parts catalogue code
					GXV 160 H2			
E-28	1	L	87101-Z1V-000	MARK, EMBLEM (GXV160 5.5)	1	-----	-----	A1S, A1SA, A14, N1, N1F, N15, N4, N45, N5M, N55, N6S, SFL, SFL1, SFY SFY1, T1AH
					1	-----	1250645	C12, C14, N4C, N5, N6, SFC
	12	D	87101-Z1V-010	MARK, EMBLEM (GXV160)	1	1240646	-----	C12, C14, N4C, N5, N6, SFC

NOTE A:PART NO. CHANGE D:NEWLY PROVIDED E:PART NO.DELETION K:REQUIRED NO. CORRECTION L:APPLICATION SERIAL NO. CORRECTION
T:APPLICATION CORRECTION Z:REMARKS CHANGE



PARTS CATALOGUE NEWS

Honda Motor Co., Ltd. Service Division

PARTS CATALOGUE - CORRECTED

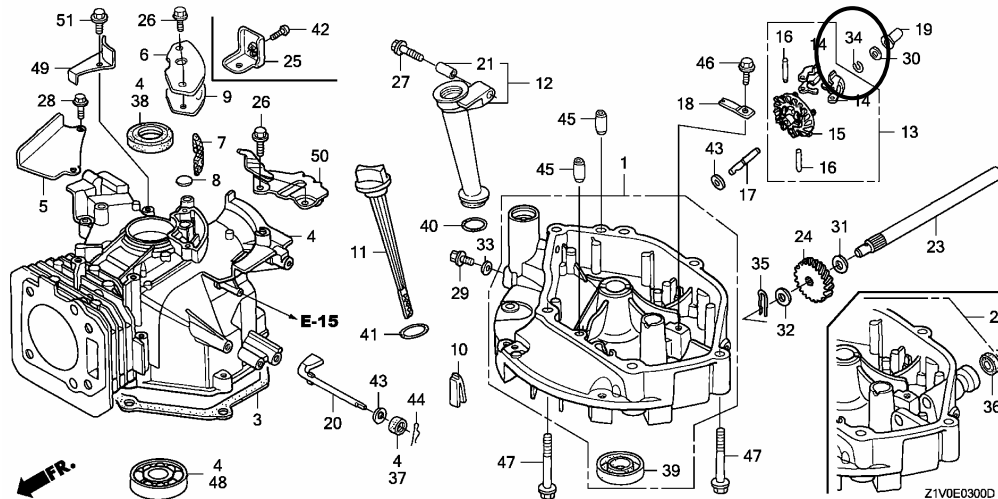
Printed in Japan

CODE NO.	BOOKLET TYPE	13Z1V402
	MICRO-FICHE	13Z1V4EB/FB
PARTS CATALOGUE NEWS	GXV160H2	
NEWS NO.	013	

Block No.	Ref. No.	Note	Part No.	Description	Reqd. QTY	Serial No.	Parts catalogue code
					GXV 160 H2		

E-3 CYLINDER BARREL

ILLUSTRATION CORRECTED



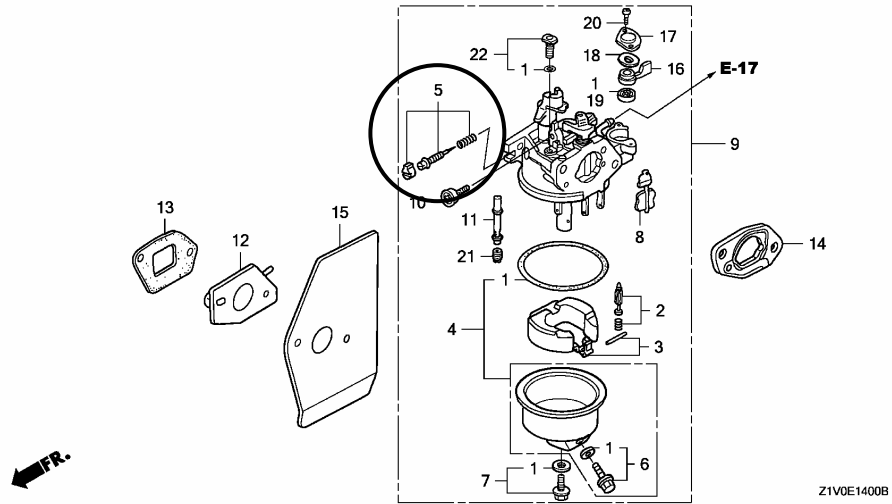
NOTE A:PART NO. CHANGE D:NEWLY PROVIDED E:PART NO.DELETION K:REQUIRED NO. CORRECTION L:APPLICATION SERIAL NO. CORRECTION
T:APPLICATION CORRECTION Z:REMARKS CHANGE

BOOKNo. : 13Z1V402

Block No.	Ref. No.	Note	Part No.	Description	Reqd. QTY GXV 160 H2	Serial No.	Parts catalogue code
-----------	----------	------	----------	-------------	-------------------------------	------------	----------------------

E-14 CARBURETOR

ILLUSTRATION CORRECTED



Z1V0E1400B

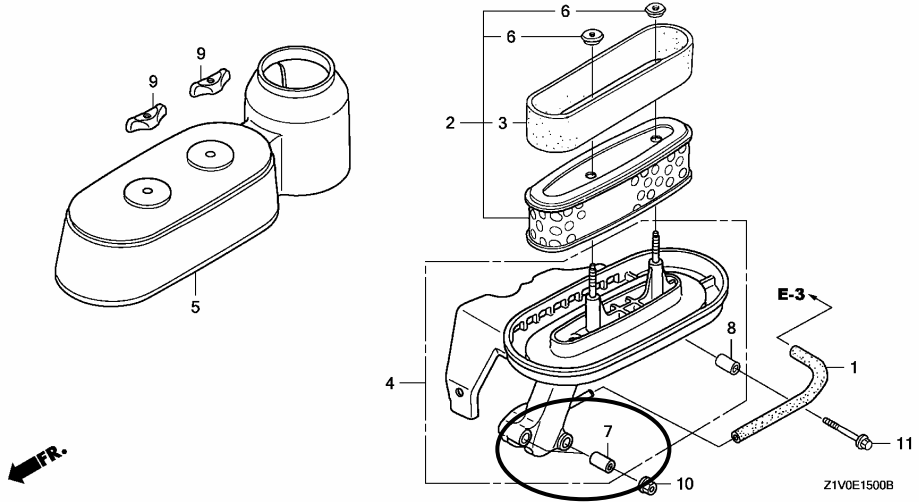
NOTE A:PART NO. CHANGE D:NEWLY PROVIDED E:PART NO.DELETION K:REQUIRED NO. CORRECTION L:APPLICATION SERIAL NO. CORRECTION
T:APPLICATION CORRECTION Z:REMARKS CHANGE

BOOKNo. : 13Z1V402

Block No.	Ref. No.	Note	Part No.	Description	Reqd. QTY GXV 160 H2	Serial No.	Parts catalogue code
-----------	----------	------	----------	-------------	-------------------------------	------------	----------------------

E-15 AIR CLEANER

ILLUSTRATION CORRECTED



NOTE A:PART NO. CHANGE D:NEWLY PROVIDED E:PART NO.DELETION K:REQUIRED NO. CORRECTION L:APPLICATION SERIAL NO. CORRECTION
T:APPLICATION CORRECTION Z:REMARKS CHANGE



PARTS CATALOGUE NEWS

Honda Motor Co., Ltd. Service Division

Printed in Japan

November 19, 2007

CODE NO.	BOOKLET TYPE	13Z1V402
	MICRO- FICHE	13Z1V4EB/FB
PARTS CATALOGUE NEWS	GXV160H2	
NEWS NO.	014	

GXV160H2-N6W type sales information

NOTE: This Parts Catalogue News explains only the parts of the different model that are produced to conform to addition of the GXV160H2-N6W type.

As for the parts not listed on this Parts Catalogue News, use the parts of the GXV160H2-N6 type.

• **Models, parts catalogue codes and applicable serial numbers**

Model	Type		Parts catalogue type	Applicable engine serial No.	Applicable carburetor identification No.
GXV160H2	N6	Base type	N6	GJAAH-1000001~	BE66J A, BE66N A
	N6W	Additional type	N6W		BE66N A

• **Features of each type**

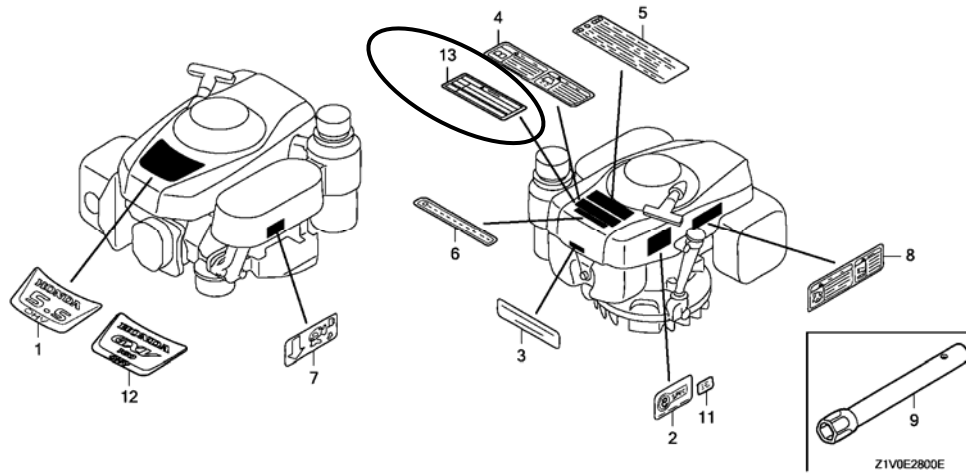
		Base type	Additional type
Specifications	Model	GXV160H2	
	Type	N6	N6W
Crankshaft	22mm Ø Straight	●	●
	22.2mm Ø Straight		
	25.4mm Ø Straight (Flat key-way)		
	25.4mm Ø Straight		
	17mm Ø Stepped thread		
	20mm Ø Stepped thread		
	23mm Ø Tapered		
Flywheel brake			

PARTS CATALOGUE NEWS

BOOKNo. : 13Z1V402

Block No.	Ref. No.	Part No.	Description	Reqd. QTY	Base Part No.	Parts catalogue code
				GXV 160 H2		
E-2	3	12200-ZE7-405	HEAD COMP., CYLINDER	1	12210-Z1V-000	
E-3	4		BARREL ASSY., CYLINDER	(0)	12000-ZE7-405	

E-28 LABEL/TOOL



E-28	5		LABEL, CAUTION	0	87522-Z1V-000	
	12	87101-Z1V-020	MARK, EMBLEM (GXV160)	1	87101-Z1V-010	
	13	87516-Z1V-800	MARK, OPERATOR CAUTION	1		



PARTS CATALOGUE NEWS

Honda Motor Co., Ltd. Service Division

PARTS CATALOGUE - CORRECTED

Printed in Japan

CODE NO.	BOOKLET TYPE	13Z1V402
	MICRO-FICHE	13Z1V4EB/FB
PARTS CATALOGUE NEWS	GXV160H2	
NEWS NO.	015	

Block No.	Ref. No.	Note	Part No.	Description	Reqd. QTY		Serial No.	Parts catalogue code
					GXV 160 H2			
E-14	21	T	99101-ZH8-0650	JET, MAIN, #65	(1)		N4C, N6W	
				(CARBURETOR NO.)	(1)	BE66M A	N6S	
				(CARBURETOR NO.)	(1)	BE66N A	C12, C14, N5, N6, SFC	

NOTE A:PART NO. CHANGE D:NEWLY PROVIDED E:PART NO.DELETION K:REQUIRED NO. CORRECTION L:APPLICATION SERIAL NO. CORRECTION
T:APPLICATION CORRECTION Z:REMARKS CHANGE



PARTS CATALOGUE NEWS

Honda Motor Co., Ltd. Service Division

PARTS CATALOGUE - CORRECTED

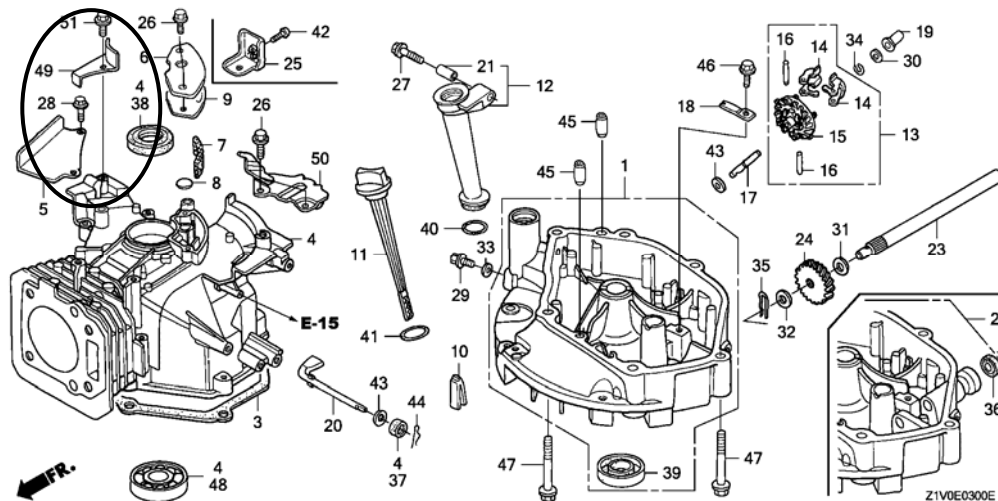
Printed in Japan

CODE NO.	BOOKLET TYPE	13Z1V402
	MICRO-FICHE	13Z1V4EB/FB
PARTS CATALOGUE NEWS	GXV160H2	
NEWS NO.	016	

Block No.	Ref. No.	Note	Part No.	Description	Reqd. QTY	Serial No.	Parts catalogue code
					GXV 160 H2		

E-3 CYLINDER BARREL

ILLUSTRATION CORRECTED



NOTE A:PART NO. CHANGE D:NEWLY PROVIDED E:PART NO.DELETION K:REQUIRED NO. CORRECTION L:APPLICATION SERIAL NO. CORRECTION
T:APPLICATION CORRECTION Z:REMARKS CHANGE



PARTS CATALOGUE NEWS

Honda Motor Co., Ltd. Service Division

PARTS CATALOGUE - CORRECTED

Printed in Japan

CODE NO.	BOOKLET TYPE	13Z1V402
	MICRO-FICHE	13Z1V4EB/FB
PARTS CATALOGUE NEWS	GXV160H2	
NEWS NO.	017	

Block No.	Ref. No.	Note	Part No.	Description	Reqd. QTY	Serial No.	Parts catalogue code
E-3	24	Z	23421-ZE6-000	GEAR, DRIVEN (22T)	1	-----	N6S, SFC, SFL, SFL1, SFY1

PARTS NAME CORRECTED

NOTE A:PART NO. CHANGE D:NEWLY PROVIDED E:PART NO.DELETION K:REQUIRED NO. CORRECTION L:APPLICATION SERIAL NO. CORRECTION T:APPLICATION CORRECTION Z:REMARKS CHANGE



PARTS CATALOGUE NEWS

Honda Motor Co., Ltd. Service Division

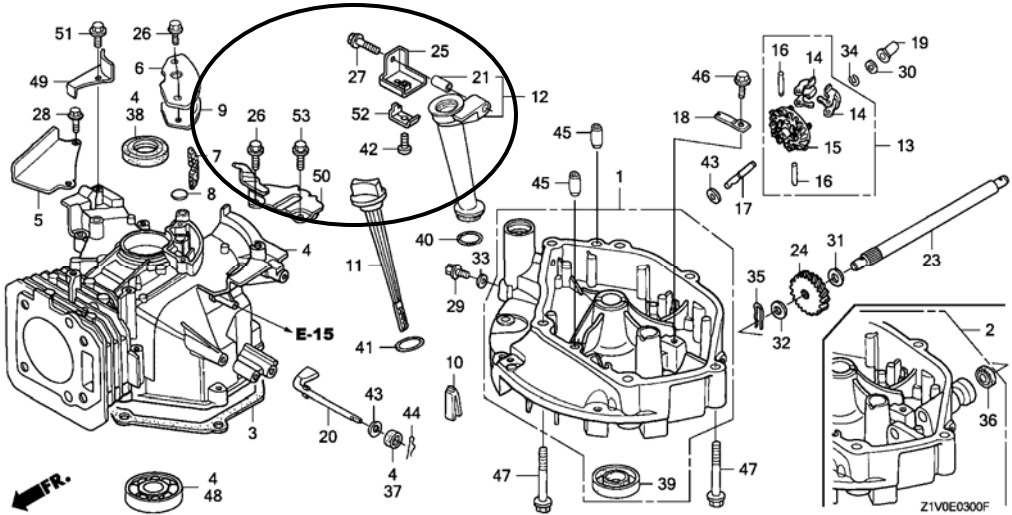
PARTS CATALOGUE - CORRECTED

Printed in Japan

CODE NO.	BOOKLET TYPE	13Z1V402
	MICRO-FICHE	13Z1V4EB/FB
PARTS CATALOGUE NEWS	GXV160H2	
NEWS NO.	018	

Block No.	Ref. No.	Note	Part No.	Description	Reqd. QTY	Serial No.	Parts catalogue code
					GXV 160 H2		

E-3 CYLINDER BARREL



E-3	26	K	90014-952-000	BOLT, FLANGE, 6X14(CT200)	3		
-----	----	---	---------------	-----------------------------------	---	--	--

NOTE A:PART NO. CHANGE D:NEWLY PROVIDED E:PART NO.DELETION K:REQUIRED NO. CORRECTION L:APPLICATION SERIAL NO. CORRECTION
T:APPLICATION CORRECTION Z:REMARKS CHANGE

PARTS CATALOGUE NEWS

BOOKNo. : 13Z1V402

Block No.	Ref. No.	Note	Part No.	Description	Reqd. QTY	Serial No.		Parts catalogue code
					GXV 160 H2			
	52	D	16576-891-000	HOLDER, CABLE	1	-----	-----	A1S, A1SA, A14, C12, C14, SFC
	53	D	90014-952-000	BOLT, FLANGE, 6X14 (CT200)	1	-----	-----	A1S, N1, N1F, N15, N4, N4C, N45, N5, N5M, N55, N6, N6S, N6W, SFL, SFL1 SFY, SFY1, T1AH

NOTE A:PART NO. CHANGE D:NEWLY PROVIDED E:PART NO.DELETION K:REQUIRED NO. CORRECTION L:APPLICATION SERIAL NO. CORRECTION
T:APPLICATION CORRECTION Z:REMARKS CHANGE

June 22, 2008



PARTS CATALOGUE NEWS

Honda Motor Co., Ltd. Service Division

PARTS CATALOGUE - CORRECTED

Printed in Japan

CODE NO.	BOOKLET TYPE	13Z1V402
	MICRO-FICHE	13Z1V4EB/FB
PARTS CATALOGUE NEWS	GXV160H2	
NEWS NO.	019	

Block No.	Ref. No.	Note	Part No.	Description	Reqd. QTY	Serial No.		Parts catalogue code
					GXV 160 H2			
E-14	21	T	99101-ZH8-0600	JET, MAIN, #60	(1)	-----	-----	A1S, A1SA, A14, N1, N1F, N15, N4, N45, N55, SFL, SFL1, SFY, SFY1, T1AH
				(CARBURETOR NO.)	(1)	-----	BE66J A	C12, C14, N5, N6, N6S, SFC

NOTE A:PART NO. CHANGE D:NEWLY PROVIDED E:PART NO.DELETION K:REQUIRED NO. CORRECTION L:APPLICATION SERIAL NO. CORRECTION
T:APPLICATION CORRECTION Z:REMARKS CHANGE

June 22, 2008



PARTS CATALOGUE NEWS

Honda Motor Co., Ltd. Service Division

PARTS CATALOGUE - CORRECTED

Printed in Japan

CODE NO.	BOOKLET TYPE	13Z1V402
	MICRO-FICHE	13Z1V4EB/FB
PARTS CATALOGUE NEWS	GXV160H2	
NEWS NO.	019	

Block No.	Ref. No.	Note	Part No.	Description	Reqd. QTY	Serial No.		Parts catalogue code
					GXV 160 H2			
E-14	21	T	99101-ZH8-0600	JET, MAIN, #60	(1)	-----	-----	A1S, A1SA, A14, N1, N1F, N15, N4, N45, N55, SFL, SFL1, SFY, SFY1, T1AH
				(CARBURETOR NO.)	(1)	-----	BE66J A	C12, C14, N5, N6, N6S, SFC

NOTE A:PART NO. CHANGE D:NEWLY PROVIDED E:PART NO.DELETION K:REQUIRED NO. CORRECTION L:APPLICATION SERIAL NO. CORRECTION
T:APPLICATION CORRECTION Z:REMARKS CHANGE



PARTS CATALOGUE NEWS

Honda Motor Co., Ltd. Service Division

PARTS CATALOGUE - CORRECTED

Printed in Japan

CODE NO.	BOOKLET TYPE	13Z1V402
	MICRO-FICHE	13Z1V4EB/FB
PARTS CATALOGUE NEWS	GXV160H2	
NEWS NO.	020	

Block No.	Ref. No.	Note	Part No.	Description	Reqd. QTY	Serial No.		Parts catalogue code
					GXV 160 H2			
E-14	9	L	16100-Z1V-003	CARBURETOR ASSY. (BE66J A) ...	1	-----	-----	A1S, A1SA, A14, N1, N1F, N15, N4, N45, N55, SFL, SFL1, SFY, SFY1, T1AH
					1	-----	1095195	C12, C14, N5, N6, SFC
					1	-----	1189960	N6S
		T	16100-Z1V-801	CARBURETOR ASSY. (BE66N A) ...	1	-----	-----	N4C, N6W
					1	1095196	-----	C12, C14, N5, N6, SFC
					1	1189961	-----	N6S
E-16	2	T	18292-ZE7-M10	PACKING, PROTECTOR	2	-----	-----	A1S, A1SA, A14, C12, C14, N1F, N15, N4, N4C, N45, N5M, N55, SFC, SFY
					2	1003408	-----	SFL, SFL1, SFY1
E-28	4	L	87520-Z1V-000	MARK A, COMBINATION (JAPANESE)	1	-----	-----	N6S
					1	-----	1000080	SFL, SFL1, SFY1
	5	T	87522-Z1V-000	LABEL, CAUTION	1	-----	-----	A1S, A1SA, A14, C12, C14, N1, N1F, N15, N4, N45, N5, N5M, N55, N6, SFC, SFY, T1AH
					1	1000081	-----	SFL, SFL1, SFY1
					1	1192411	-----	N4C

NOTE A:PART NO. CHANGE D:NEWLY PROVIDED E:PART NO.DELETION K:REQUIRED NO. CORRECTION L:APPLICATION SERIAL NO. CORRECTION
T:APPLICATION CORRECTION Z:REMARKS CHANGE

PARTS CATALOGUE NEWS

BOOKNo. : 13Z1V402

Block No.	Ref. No.	Note	Part No.	Description	Reqd. QTY	Serial No.		Parts catalogue code
					GXV 160 H2			
	8	L	87526-Z1V-000	MARK B, COMBINATION (JAPANESE)	1	-----	-----	N6S
					1	-----	1000080	SFL, SFL1, SFY1
	11	T	87114-ZH7-000	LABEL, WARNING (NOT CERTIFIED FOR SALE)	1	-----	-----	N4C, N6W
					1	1075235	-----	C12, C14, N5, N6S, SFC
					1	1149398	-----	N6

NOTE A:PART NO. CHANGE D:NEWLY PROVIDED E:PART NO.DELETION K:REQUIRED NO. CORRECTION L:APPLICATION SERIAL NO. CORRECTION
T:APPLICATION CORRECTION Z:REMARKS CHANGE



PARTS CATALOGUE NEWS

Honda Motor Co., Ltd. Service Division

PARTS CATALOGUE - CORRECTED

Printed in Japan

CODE NO.	BOOKLET TYPE	13Z1V402
	MICRO-FICHE	13Z1V4EB/FB
PARTS CATALOGUE NEWS	GXV160H2	
NEWS NO.	021	

Block No.	Ref. No.	Note	Part No.	Description	Reqd. QTY	Serial No.	Parts catalogue code
					GXV 160 H2		
E-22	21		90659-680-013	CLIP, WIRE HARNESS	1	-----	N1, N4, N5M, SFL, SFL1, SFY, SFY1, T1AH
					1	----- 1446686	N4C, N5, N6, N6S, N6W, SFC
	28	A	90659-Z1V-003	CLIP, HARNESS	1	1446687	N4C, N5, N6, N6S, N6W, SFC
			46392-SC2-003	CLAMP, BRAKE PIPE (GRAY)	1	-----	N1, N4, N5M, SFL, SFL1, SFY, SFY1, T1AH
					1	----- 1446521	N4C, N5, N6, N6S, N6W
		A	46392-Z1V-003	CLAMP, HARNESS	1	1446522	N4C, N5, N6, N6S, N6W
E-22-1	21		90659-680-013	CLIP, WIRE HARNESS	1	-----	A1S, A1SA, A14, N1F, N15, N45, N55
					1	----- 1446686	C14
	A	90659-Z1V-003	CLIP, HARNESS	1	1446687	C14	

NOTE A:PART NO. CHANGE D:NEWLY PROVIDED E:PART NO.DELETION K:REQUIRED NO. CORRECTION L:APPLICATION SERIAL NO. CORRECTION
T:APPLICATION CORRECTION Z:REMARKS CHANGE



PARTS CATALOGUE NEWS

Honda Motor Co., Ltd. Service Division

PARTS CATALOGUE - CORRECTED

Printed in Japan

CODE NO.	BOOKLET TYPE	13Z1V402
	MICRO-FICHE	13Z1V4EB/FB
PARTS CATALOGUE NEWS	GXV160H2	
NEWS NO.	022	

Block No.	Ref. No.	Note	Part No.	Description	Reqd. QTY	Serial No.	Parts catalogue code
E-2	5		12251-ZE7-000	GASKET, CYLINDER HEAD	1	-----	A1S, A1SA, A14, N1, N1F, N15, N4, N45, N5M, N55, SFL, SFL1, SFY, SFY1 T1AH
					1	-----	1453288 C12, C14, N4C, N5, N6, N6S, N6W, SFC
		A	12251-Z1V-003	1	1453289	C12, C14, N4C, N5, N6, N6S, N6W, SFC

NOTE A:PART NO. CHANGE D:NEWLY PROVIDED E:PART NO.DELETION K:REQUIRED NO. CORRECTION L:APPLICATION SERIAL NO. CORRECTION
T:APPLICATION CORRECTION Z:REMARKS CHANGE



PARTS CATALOGUE NEWS

Honda Motor Co., Ltd. Service Division

PARTS CATALOGUE - CORRECTED

Printed in Japan

CODE NO.	BOOKLET TYPE	13Z1V402
	MICRO-FICHE	13Z1V4EB/FB
PARTS CATALOGUE NEWS	GXV160H2	
NEWS NO.	023	

Block No.	Ref. No.	Note	Part No.	Description	Reqd. QTY	Serial No.		Parts catalogue code
					GXV 160 H2			
E-17	15		90010-GE0-710	CLIP, TUBE	1	-----	-----	A1S, A14
					1	-----	1494275	C12, C14, SFC
			A	90010-Z1V-800	1	1494276	-----

NOTE A:PART NO. CHANGE D:NEWLY PROVIDED E:PART NO.DELETION K:REQUIRED NO. CORRECTION L:APPLICATION SERIAL NO. CORRECTION
T:APPLICATION CORRECTION Z:REMARKS CHANGE



PARTS CATALOGUE NEWS

Honda Motor Co., Ltd. Service Division

PARTS CATALOGUE - CORRECTED

Printed in Japan

CODE NO.	BOOKLET TYPE	13Z1V402
	MICRO-FICHE	13Z1V4EB/FB
PARTS CATALOGUE NEWS	GXV160H2	
NEWS NO.	024	

Block No.	Ref. No.	Note	Part No.	Description	Reqd. QTY	Serial No.	Parts catalogue code
					GXV 160 H2		
E-11-1	1		28400-Z1V-003ZB	STARTER ASSY., RECOIL *R280*..... POWER RED	1	----- 1510263	N4C, N6W
					1	1113863 -----	N1, N4, SFL, SFL1, SFY, SFY1
					1	1113863 1510263	C12, C14, N5, N6, N6S, SFC
	A		28400-Z1V-013ZB	*R280*..... POWER RED	1	1510264 -----	C12, C14, N4C, N5, N6, N6S, N6W, SFC
					11	28461-ZH8-003	GRIP, STARTER
	1	1113863 -----	N1, N4, SFL, SFL1, SFY, SFY1, T1AH				
	1	1113863 1510263	C12, C14, N5, N6, N6S, SFC				
	A		28461-ZH8-013	1	1510264 -----	C12, C14, N4C, N5, N6, N6S, N6W, SFC

NOTE A:PART NO. CHANGE D:NEWLY PROVIDED E:PART NO.DELETION K:REQUIRED NO. CORRECTION L:APPLICATION SERIAL NO. CORRECTION
T:APPLICATION CORRECTION Z:REMARKS CHANGE