

# ***GENERAL PURPOSE ENGINE***

GXV390UT1  
GXV390RT1

**PARTS CATALOGUE**

**2**



GXV390UT1

---

FOREWORD INDEX

**1**

---

ENGINE GROUP

**2**

---

PART NUMBER INDEX

**3**

---

PART NAME INDEX

**4**

---



**Instruction for use of parts catalogue**

- **This parts catalogue was prepared based on the latest information available as of February 01, 2008.**
- See the parts catalogue news for any revision that is made after February 01, 2008.
- **Always specify the part number when ordering a part.**
- Check the model, type, serial numbers, color, maker, and the size as needed before ordering a part.
- Note that the illustrations (part drawings) can differ from the actual parts in shape. They are given just to help you to refer to the parts.
- **When modifications or additions to this parts catalogue are made, a revised edition will be issued at an appropriate time, with successively progressing revision numbers on the cover. We recommend obtaining such revisions in order to keep your parts catalogue up-to-date at all times. To check whether a parts catalogue revision has been issued, please contact your Honda distributor.**

Initial version issue date June 10, 2005  
**Honda Motor Co., Ltd.**

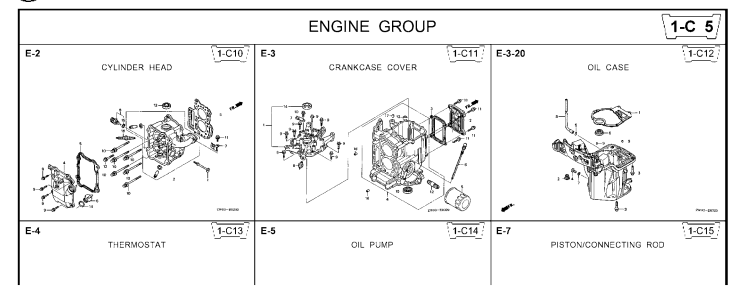
**CONTENTS**

	Page	Address No.	
● Instruction for use of parts catalogue .....	1	B 1	<b>1</b>
● How to refer to the part information .....	2	B 2	
● Part catalogue structure .....	3	B 3	
● When the parts were revised .....	4	B 4	
● Abbreviations used in the parts catalogue.....	4	B 4	
● How to check the part block and serial numbers .....	5	B 5	
● Models, parts catalogue codes and applicable serial numbers .....	6	B 6	
● Features of each type .....	7	B 7	
● Fuel hose, general purpose hoses and vinyl hose .....	8	B 8	
● FLAT RATE SERVICE TIME .....	9	B 9	
● Illustrated index .....	14	B14	
● ENGINE GROUP .....	16	C 1	<b>2</b>
● PART NO. INDEX.....	42	E 1	<b>3</b>
● PART NAME INDEX.....	44	F 1	<b>4</b>

How to refer to the part information

1

A Reference with "Illustrated index"



B Reference with "Part number index"

PART NO. INDEX

Part Number	Address	Page	Ref.	Part Number	Address	Page
06000				15212-ZW9-000	1-C14	3C
06316-ZW9-000	1-69	88	1	15220-ZW9-003	1-C14	3C
11000				15332-ZW9-000	1-E8	55
11300-ZW9-405	1-C11	27	1	15332-ZW9-A30	1-E11	5E
11300-ZW9-406	1-C11	27	1	15400-PF8-004	1-C11	27
11340-ZW9-000	1-C11	27	2	15422-ZW9-000	1-C14	3C
11342-ZW9-000	1-C11	27	3	15473-881-000	1-C14	3C
11381-ZW9-003	1-C12	28	1	15474-ZW9-000	1-C14	3C
				15611-921-000	1-C10	2E
				15655-ZW9-000	1-C11	27
				16000		
12000				16010-ZV4-005	1-D4	3E
12000-ZW9-405ZA	1-C11	27	4	16011-ZV4-005	1-D4	3E
12155-ZV4-A00	1-C13	29	1	16013-ZW9-003	1-D4	3E
12166-ZW9-000	1-C10	26	1	16016-ZW9-003	1-D4	3E
12209-GB4-681	1-C16	32	1	16016-ZW9-721	1-D4	3E
12210-ZW9-405ZA	1-C10	26	2	16023-ZW9-003	1-D4	3E
12216-ZE2-300	1-E8	55	1	16024-ZV4-650	1-D4	3E
	1-E11	58	1	16028-ZV4-650	1-D4	3E

C Reference with "Part name index"

PART NAME INDEX

Part name	Address	Page	Ref.
[ A ]			
ABSORBER , FUEL	1-E15	62	5
ARMATURE COMP.	1-D11	43	7
ARM COMP. , LINK JOINT	1-G6	85	18
ARM COMP. , SHIFT LINK	1-G6	85	14
ARM COMP. , TILT	1-F15	79	20
ARM , FUEL PUMP ROCKER	1-C16	32	4
ARM , REVERSE LOCK	1-F15	79	18
ARM , SHIFT LINK	1-F11	74	7
ARM , STOPPER	1-D1	33	12
ARM , THROTTLE REMOTE	1-F11	74	6
ARM , VALVE ROCKER	1-C16	32	3
[ B ]			
BAG , TOOL , 160MM	1-G5	84	10
BAND	1-G6	86	37
BAND B1 , WIRE	1-F6	69	1
BAND , CORD	1-F3	67	18
BAND , TUBE CLIP , 11MM	1-E15	63	20
BAND , TUBE CLIP , 12.5MM	1-E15	63	19

Address No. 1-C10

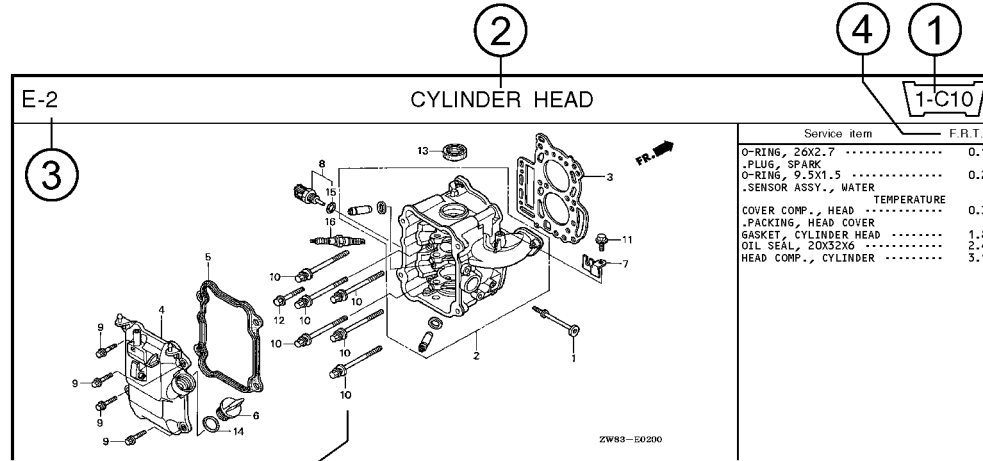
Block No. E-2 CYLINDER HEAD

Ref No.

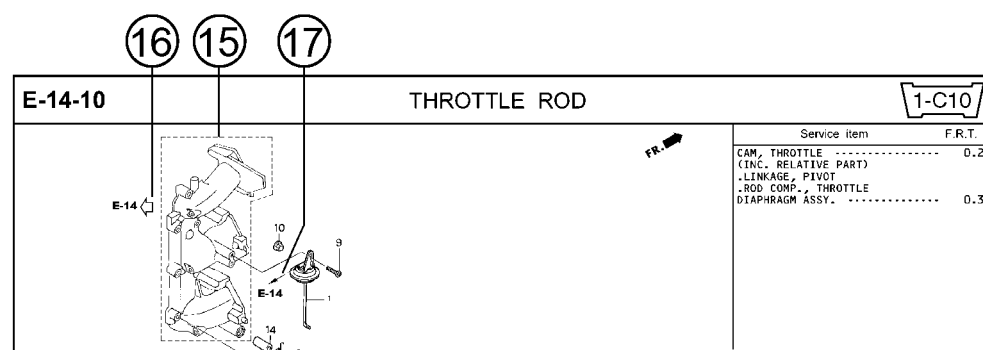
Ref. No.	Part No.	Description	Reqd. QTY						Serial No.	Parts catalogue code
			99D1	99D1	10D1	10D1	10B1	10B1		
1	12166-ZW9-000	STOPPER, ENGINE SIDE	2	2	2	2	2	2		
2	12210-ZW9-000ZA	HEAD COMP., CYLINDER	1	1	1	1	1	1		
3	12251-ZW9-003	GASKET, CYLINDER HEAD	1	1	1	1	1	1		
4	12310-ZW9-000	COVER COMP., HEAD	1	1	1	1	1	1		
5	12312-ZW9-000	PACKING, HEAD COVER	1	1	1	1	1	1		
6	15611-921-000	CAP, OIL	1	1	1	1	1	1		
7	16617-ZW9-000	HOLDER, CABLE	1	1	1	1	1	1	SC,SG	
	16617-ZW9-010		1	1	1	1	1	1	1001800	LHC,LHD
			1	1	1	1	1	1	1001801	LHC,LHD
8	35675-ZW5-003	SENSOR ASSY., WATER	1	1	1	1	1	1		
9	90003-ZW9-000	BOLT, FLANGE, 6X22	1	4	4	4	4	4		
10	90007-ZW9-003	BOLT, FLANGE, 8X83	6	6	6	6	6	6		
11	90011-ZW9-000	BOLT, FLANGE, 6X14(CT200)	1	1	1	1	1	1		
12	90020-ZW9-000	BOLT, FLANGE, 8X40	2	2	2	2	2	2		
13	91202-KJ9-003	OIL SEAL, 20X32X6	1	1	1	1	1	1		
14	91301-805-000	O-RING, 26X2.7	1	1	1	1	1	1		
15	91307-PK2-005	O-RING, 9.5X1.5(HONDA KIKAKI)	1	1	1	1	1	1		
16	98059-55916	PLUG, SPARK (CR5EH-9)	2	2	2	2	2	2		
	98059-55926	PLUG, SPARK (U16FER9)	2	2	2	2	2	2		

Page No. 2000.09.20 E

**Part catalogue structure**

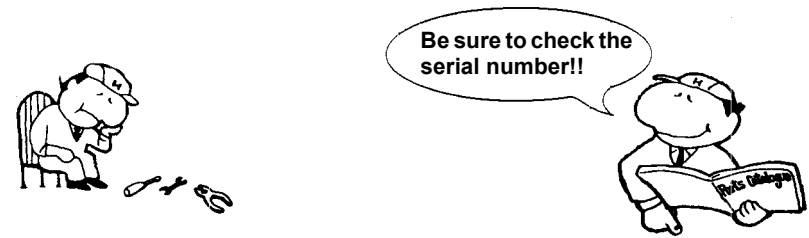


Ref. No.	Part No.	Description	Reqd. QTY						Serial No.	Parts catalogue code
			BF 9/9D1	BFP 9/9D1	BF 10D1	BFP 10D1	BF 10B1	BFP 10B1		
1	12166-ZW9-000	STOPPER, ENGINE SIDE	2	2	2	2	2	2		
2	12210-ZW9-000ZA	HEAD COMP., CYLINDER *NHS* ..... DARK GRAY	1	1	1	1	1	1		
3	12251-ZW9-003	GASKET, CYLINDER HEAD	1	1	1	1	1	1		
4	12310-ZW9-000	COVER COMP., HEAD	1	1	1	1	1	1		
5	12312-ZW9-000	PACKING, HEAD COVER	1	1	1	1	1	1		
6	15611-921-000	CAP, OIL (NO GAUGE)	1	1	1	1	1	1		
7	16617-ZW9-000	HOLDER, CABLE	1	1	1	1	1	1	SC,SG	
	16617-ZW9-010		1	1	1	1	1	1	1001800 LHC,LHD	



- ① **Address number**
  - Address No. is provided (in place of the page No.) to help you refer to the part with the part No. or part name.
- ② **Block title** ③ **Block number**
- ④ **Service item/Flat rate time**
- ⑤ **Reference number**
  - Title number marked with the parenthesis or parentheses indicates that it continues from the previous page.
- ⑥ **Part number** ⑦ **Honda color code**
- ⑧ **Description**
- ⑨ **Assemblies**
  - Sections framed with broken lines in the exploded view drawings are available as complete assemblies. (Their individual parts can also be obtained.)
- ⑩ **Color description**
- ⑪ **Note**
  - Notes are shown with the parentheses in the part name column.
- ⑫ **Required quantity**
  - Required QTY shown in the parenthesis or parentheses indicates the optional part.
  - Required QTY marked with "N" Indicates the optional part that should be selected as needed.
  - Required QTY indicates the number of the part used in the block.
- ⑬ **Serial number**
- ⑭ **Type**
  - When the type column is blank, it indicates that the part is applicable to all types.
  - As the type of the actual unit may differ from the "parts catalogue, type" please refer to "Models, types and applicable serial numbers" for confirmation.
- ⑮ **[Dotted line]**
  - Parts enclosed within a dotted line [ ] are covered in a different block.
- ⑯ **[Hollow arrow]**
  - A hollow arrow [ ] indicates the block No. for the parts enclosed within a dotted line [ ] .
- ⑰ **[Solid arrow]**
  - A solid arrow [ ] indicates the block No. the part in question is connected to.

**When the parts were revised**



Ref. No.	Part No.	Description	Reqd. QTY						Serial No.
			BF 99D1	BFP 9.9D1	BF 10D1	BFP 10D1	BF 10B1	BFP 10B1	
1	12166-ZW9-000	STOPPER, ENGINE SIDE .....	2	2	2	2	2	2	
2	12210-ZW9-000ZA	HEAD COMP., CYLINDER *NHS* ..... DARK GRAY	1	1	1	1	1	1	
3	12251-ZW9-003	GASKET, CYLINDER HEAD .....	1	1	1	1	1	1	
4	12310-ZW9-000	COVER COMP., HEAD .....	1	1	1	1	1	1	
5	12312-ZW9-000	PACKING, HEAD COVER .....	1	1	1	1	1	1	
6	15611-921-000	CAP, OIL (NO GAUGE) .....	1	1	1	1	1	1	
7	16617-ZW9-000	HOLDER, CABLE (###) .....	1	1	1	1	1	1	SC, SG LHC, LHD LHC, LHD
	16617-ZW9-010	.....	1	1	1	1	1	1	

The number has been used from the initial model without revision.

When shown at the left side, it is applicable to the models of No.1001801 and the subsequent numbers.

When shown at the right side, it is applicable to the models up to No.1001800.

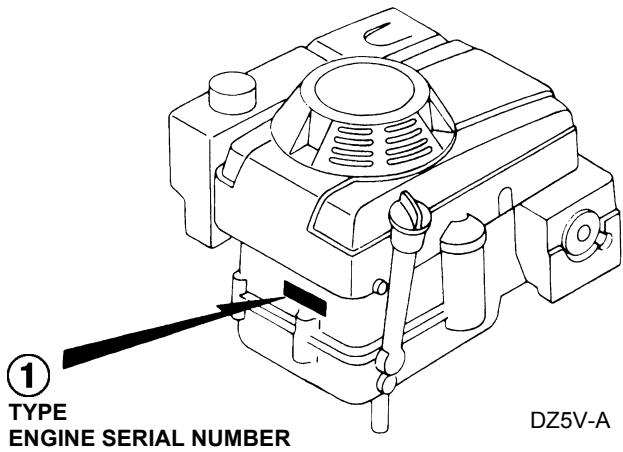
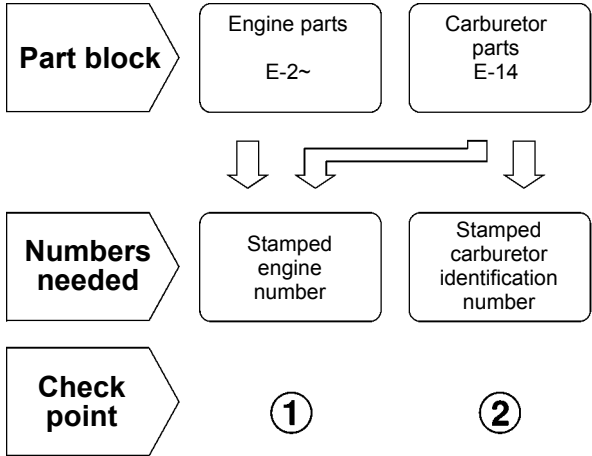
• The parts listed with "###" at the end of the parts name have limited supply period (parts not for sale).

**Abbreviations used in the parts catalogue**

• The following abbreviations are used in the parts name column.

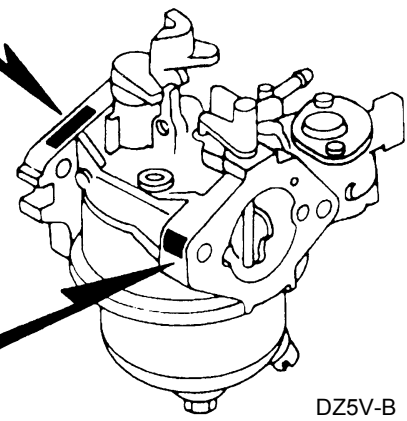
- A ..... Ampere
- A.C. .... Alternating current
- ASSY. .... Assembly
- AT. .... Automatic transmission
- C.D.I. .... Capacitive discharge ignition
- COMP. ... Complete
- D.C. .... Direct current
- EX. .... Exhaust
- G.F.C.I ... Ground fault circuit interruptor
- HEX. .... Hexagonal
- H.S.T. .... Hydrostatic transmission
- FR. ....Front
- IN. ....Inlet
- L (100L) .Link (100 Links)
- L. ....Left
- MM .....Millimeter
- MT. ....Manual Transmission
- P.T.O. ....Power take off
- R. ....Right
- RR. ....Rear
- STD. ....Standard
- T (22T) ...Tooth (22 Teeth)
- V .....Volt
- W .....Watt

How to check the part block and serial numbers



2-B  
CARBURETOR IDENTIFICATION  
NUMBER

2-A  
CARBURETOR IDENTIFICATION  
NUMBER





Models, parts catalogue codes and applicable serial numbers

• Models, parts catalogue codes and applicable serial Nos. given in this parts catalogue can be identified as follows.

Model	Type	Parts catalogue type	Applicable engine serial No.	Applicable carburetor identification No.	Model	Type	Parts catalogue type	Applicable engine serial No.	Applicable carburetor identification No.
GXV390UT1	DABG	DABG	GJADT-1000001~	BE86P A	GXV390RT1	DAEU	DAEU	GJADT-1000001~	BE86P B
	DAEU	DAEU				DAS	DAS		
	DAS	DAS				DAU	DAU		
	DAU	DAU				DA23	DA23		
	DA23	DA23				DA33	DA33		
	DA33	DA33				DCA	DCA		
	DCA	DCA				DETR	DETR		
	DETR	DETR		DFWT		DFWT			
	DET3	DET3				BE86R C			
	DE33	DE33			BE86P B				
	DFWT	DFWT			BE86R C				
	DNE4	DNE4							
	DN4	DN4							
	DXE2	DXE2			BE86P A				
DXE4	DXE4								
DX2	DX2								

\* Of carburetor identification numbers, only the portions underlined in the example below are used for registration.

BE 86P A KC ナ  
 (A) (B)

Features of each type

- See the following table for the features of each type. (Items in brackets are optional)

Specifications \ Model Type	GXV390UT1															
	DABG	DAEU	DAS	DAU	DA23	DA33	DCA	DETR	DET3	DE33	DFWT	DNE4	DN4	DXE2	DXE4	DX2
Recoil starter	•	•	•		•	•			•	•		•	•	•	•	•
Muffler	•	•	•	•	•	•		•	•	•		•	•	•	•	•
Fuel tank	•								•	•		•	•	•	•	•
Starter motor		•	•	•			•	•	•	•	•	•		•	•	

Specifications \ Model Type	GXV390RT1							
	DAEU	DAS	DAU	DA23	DA33	DCA	DETR	DFWT
Recoil starter	•	•		•	•			
Muffler	•	•	•	•	•		•	
Fuel tank								
Starter motor	•	•	•			•	•	•

## Fuel hose, general purpose hoses and vinyl hose

- The standard part fuel hose, general purpose hose and vinyl hose may be substituted by the coiled bulk part.
- When ordering the standard part fuel hose, general purpose hose and vinyl hose use the bulk part number written in the parts catalog in brackets ( ) underneath the part name.
- When exchanging the hose, cut and use at the specified length as mentioned in the part name.  
(For the method of cutting the bulk part, and method of filling out orders etc., please refer to the instructions issued with the bulk part.)

### Bulk part number of fuel hose, general purpose hose and vinyl hose.

Example: 9 5 0 0 1 - 7 5 0 0 1 - 5 0 M

**Bulk part number:**  
Refers to the bulk part.

**Marking code (fuel hose and general purpose hose)**

**Change code (Vinyl hose)**

Indicates number mark or change sequence, however, the code for the bulk part must be strictly 0 (zero).

**Types of code:**

- |             |  |                |  |              |   |
|-------------|--|----------------|--|--------------|---|
| • Fuel hose | 2: Red outside braid<br>(3 mm inside dia. only)        | • General hose | 1: Ash gray<br>2: Ash gray<br>3: Black<br>5: Black | • Vinyl hose | 1: Clear<br>2: Black<br>3: Light red<br>6: Light red<br>7: Pale black |
|             | 5: Black inside braid                                  |                |  |              |   |
|             | 3: Red (3 mm inside dia. only)                         |                |  |              |   |
|             | 4: Ash gray with red stripe<br>(3 mm inside dia. only) |                |  |              |   |
|             | 6: Black   |                |  |              |   |

**Lengths:**

- 001: 1 m (standard)  
003: 3 m  
008: 8 m } Application or specification of some parts is not settled.

**I.D code: (fuel hose and general purpose hose)**

- |            |                    |                    |                             |                             |
|------------|--------------------|--------------------|-----------------------------|-----------------------------|
| 30: 3.0 mm | 50: 5.0 mm         | 70: 7.0 mm         | 11: 11 mm                   | 12: 12 (outside dia. 17) mm |
| 35: 3.5 mm | 55: 5.3 mm, 5.5 mm | 75: 7.3 mm, 7.5 mm | 91: 12 (outside dia. 15) mm | 14: 14 mm                   |
| 45: 4.5 mm | 65: 6.5 mm         | 80: 8.0 mm         | 92: 12 (outside dia. 16) mm | 17: 17 mm                   |

**ID./OD. code: (vinyl hose)**

- |                         |                          |                           |                           |                           |
|-------------------------|--------------------------|---------------------------|---------------------------|---------------------------|
| 01: ID. 2.9, OD. 6.8 mm | 12: ID. 5.0, OD. 7.0 mm  | 21: ID. 8.0, OD. 9.0 mm   | 37: ID. 11.0, OD. 15.0 mm | 50: ID. 16.0, OD. 19.0 mm |
| 03: ID. 3.0, OD. 6.0 mm | 10: ID. 5.0, OD. 8.0 mm  | 23: ID. 8.0, OD. 12.0 mm  | 38: ID. 12.0, OD. 13.0 mm | 55: ID. 17.5, OD. 20.5 mm |
| 05: ID. 3.5, OD. 6.5 mm | 11: ID. 5.0, OD. 9.0 mm  | 25: ID. 9.0, OD. 11.0 mm  | 39: ID. 12.0, OD. 14.0 mm | 60: ID. 22.0, OD. 27.0 mm |
| 07: ID. 4.0, OD. 7.0 mm | 14: ID. 6.0, OD. 9.0 mm  | 27: ID. 9.0, OD. 13.0 mm  | 40: ID. 12.0, OD. 16.0 mm |                           |
| 08: ID. 4.5, OD. 6.5 mm | 17: ID. 7.0, OD. 9.0 mm  | 33: ID. 10.0, OD. 14.0 mm | 43: ID. 13.0, OD. 15.0 mm |                           |
| 09: ID. 4.5, OD. 8.0 mm | 19: ID. 7.0, OD. 11.0 mm | 36: ID. 11.0, OD. 13.0 mm | 45: ID. 14.0, OD. 18.0 mm |                           |

**Hose type:**

- 1: Fuel hose  
3: Vinyl hose  
5: General hose

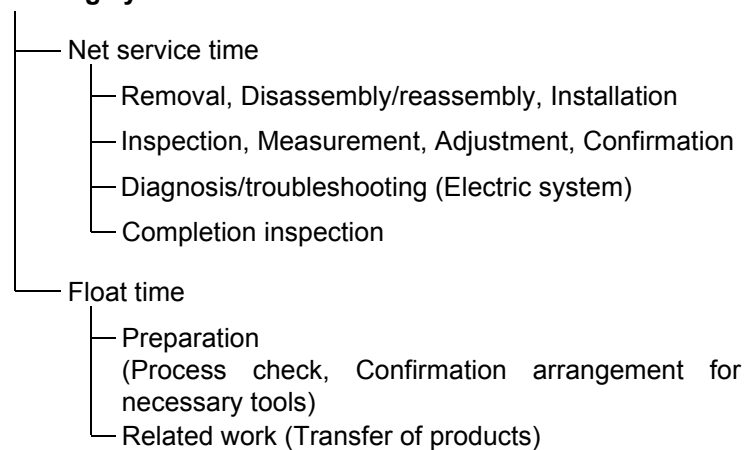
⊙ **CAUTION: It is DANGEROUS to confuse the fuel hose with the general purpose hose or vinyl hose.**

Never use a general purpose hose or vinyl hose in place of a fuel hose or vice versa. Always use the correct bulk part in the parts catalogue, according to the service manual or the instructions issued with the bulk part.

## FLAT RATE SERVICE TIME

Flat rate service time (FRT) means the standard time required to service a product, which is listed in this manual to help the dealers control the actual working process and calculate the service charge by using it as a guide.

### FRT setting system



\* Float time is set by multiplying the net service time by a given coefficient.

### Editorial style

The service items shown in the text are listed with the exchange work time for the repair sales parts as the subject. Other representative service items not using repair parts (removal/installation, adjustment, inspection/measuring, and other work) are listed collectively in the list in the preface, classified according to the work.

### FRT setting standard

- Decimal system (in unit of 0.1) is adopted to set FRT as it is convenient to calculate the wage.  
Example: (0.1) → 6 minutes, (0.2) → 12 minutes  
[Labor cost per hour] x [FRT] = [Wage]
- FRT is set with a hand tool.
- Service items and FRT can be subject to change depending on development of tools and service equipment and improvement in service procedure.

**Work procedure**

- As the work procedure is set with the work time according to the method in the separate Service Manual, refer to this Manual as required.
- Work methods permitting servicing in the shortest time still permitting assurance of safe work and product warranty are used for the setting of service items not listed in the Service Manual.
- Work basically is to be performed by one person, and when two or more people are required, setting is done as the total time for the number of people.
- The set value for the technological level of the workers uses a person with three years of experience in the repair of Honda products as the standard.
- Special tools and service equipment used to set FRT are those specified or recommended in Service Manual.

**Service item whose FRT is not presented**

- Accessories and service parts that are not listed to use in this manual.
  - Locations with little aging deterioration or breakage during normal use.
  - Service work that can be finished by one touch.
  - Service work that is seldom done (i.e. extremely small causes of trouble and service frequency).
  - Products and parts whose location for installation differs according to its status of use and application.
- \* When FRT is not presented, please calculate wages based on appropriate actual work time.

**Operation not included of FRT**

- Oil and coolant water draining, Waiting time for warming up operation and etc..
- Additional operation that involves removal/installation of standard exterior equipment.
- Indirect time spent for service by visiting the customer, trade-in, and delivery.
- Indirect time required for ordering and delivery of parts.
- Cost for grease, adhesive agent, etc. used for service work.

**Explanation of FRT by using an example  
(The example may differ from the actual presented items)**

Ref. No.	L.O.N.	(Relative ref. Number) Description	F.R.T.
①	1111L1	④ VALVE, INTAKE .....4.1	②
②		⑧ • NOTE: OHV type	⑦
③	1111L1A	⑤ • Includes: Engine removal and installation One head (intake all) add ..... 1.4	

- ① Reference No. of the illustration of part that shows location of the replacement work.
- ② FRT is an abbreviation of Flat Rate Time indicating the standard service time required for the replacement.
- ③ LON is an abbreviation of Labor Operation Number, and it is a classification of the service items by the work unit code.

The same operation code is used regardless of the models.

Standard operation is indicated with 6 digits code, and additional operation is indicated with 7 digits code.

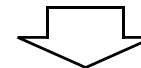
- ④ Indicating the intake valve replacement and FRT4.1.
- ⑤ Indicating FRT1.4 that will be added when additional operation (whole intake side of one cylinder head) is done in association with intake valve replacement.

- ⑥ Indicating work condition or application condition of the service item.
- ⑦ Indicating work contents that are included in the service item.
- ⑧ Indicating a reference No. whose operation and time are the same as FRT4.1 for the intake valve.

(The application range is limited to the service items without an LON setting within a same block.)

**How to refer to the service item by using the sample  
(intake valve replacement)**

Open to the page of the block where the intake valve's spare part illustration is shown.



Look for the intake valve illustration, and refer to the service item and FRT that agree with the reference No.

Indication mark for the listing of service items that continues to the following page

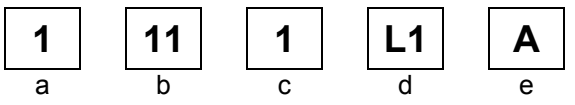
Ref. No.	L.O.N.	(Relative ref. Number) Description	F.R.T.
2	1111L1	VALVE, INTAKE .....	4.1
	.	.	.
	.	.	.

+  
Mark indicated at the last line.

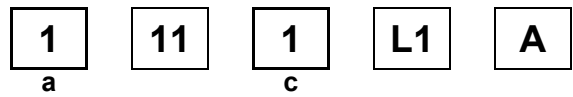
Indication of the block with no setting of FRT

Ref. No.	L.O.N.	(Relative ref. Number) Description	F.R.T.
<b>NO INFORMATION .....</b>			

• LON code system



- a) Category code..... Engine
- b) Location/function code..... Engine upper
- c) Operation code..... Replace
- d) Operation sequence number (Unit code can be shown with alphabet)  
..... Intake valve  
(No regular rule of code)
- e) Additional code ..... One head (intake all)  
(No regular rule of code)



a) Category codes and classification

Code	Category
1	Engine
2	Power drive
3	Fuel & Exhaust
4	Frame & Body
5	Steering
6	Electrical
7	Axle & Brake
8	Control system
9	-
0	Attachments

c) Operation codes and classification

Code	Operation category
1	Replace, Removal/Installation, Change
2	Overhaul
3	Adjust, Rotation
4	(Paint-related work: Top-coat)
5	Test, Inspect/diagnose, Measurement
6	(Overhaul-related work: Rebore)
7	(Overhaul-related work: Reseal)
8	(Resurface)
9	(Paint-related work: Refinish)
0	Repair, Cleaning, Air bleeding

Major service items without using spare parts

- (1) Removal/Installation, (2) Adjustment,  
(3) Inspection/Masurement, (4) Overhaul, (5) Other work

E: Engine, T: Transmission, D: Drive system,  
B: Body and related parts

### (1) Removal/Installation

Set with the parts configuration in the status of being removed from the product.

	LON	DESCRIPTION	FRT
E	1111L3	CYLINDER HEAD ASSEMBLY-REMOVAL/INSTALLATION	0.6

### (2) Adjustment

	LON	DESCRIPTION	FRT
E	1113A1	VALVE CLEARANCE-ADJUSTMENT NOTE: For 1 product	0.3
	1163A0	CONTROL, THROTTLE/GOVERNOR-ADJUSTMENT	0.2
	3113A2	CARBURETOR IDLE-ADJUSTMENT	0.2

### (3) Inspection, Measurement, Cleaning

	LON	DESCRIPTION	FRT
E	1105A0	ENGINE OIL-INSPECTION	0.1
	3120A0	AIR CLEANER-CLEANING INCLUDES: Air cleaner-inspection	0.2
	3130A0	SPARK ARRESTER-CLEANING INCLUDES: Spark arrester-inspection	0.3
	6140A0	SPARK PLUG-ADJUSTMENT/CLEANING NOTE: For 1 product	0.1

### (4) Overhaul

Work condition: The required Measurements, inspections, adjustments, and cleaning/washing of each part are performed, including the main body removal/installation work and the replacement of defective parts.

	LON	DESCRIPTION	FRT
E	3112A0	CARBURETOR-OVERHAUL INCLUDES: All necessary adjustment	0.6

### (5) Other work

	LON	DESCRIPTION	FRT
E	1101E1	ENGINE OIL-CHANGE INCLUDES: Engine oil-inspection	0.2



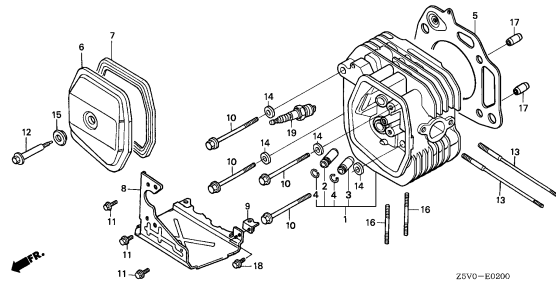
# ENGINE GROUP

**B14**

**E-2**

CYLINDER HEAD

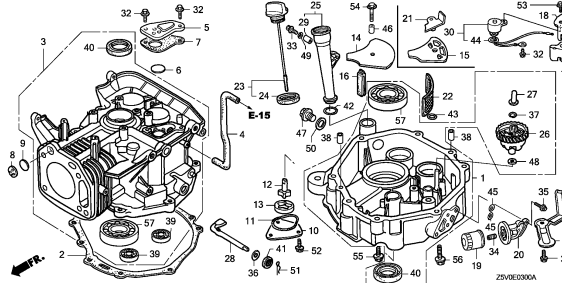
**C 1**



**E-3**

CYLINDER BARREL/OIL PAN

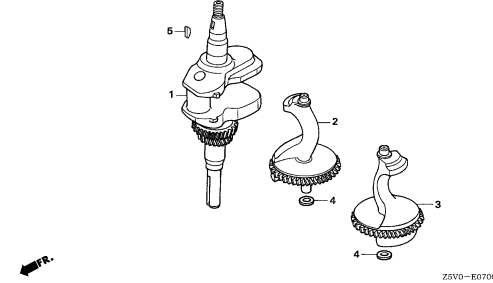
**C 2**



**E-7**

CRANKSHAFT

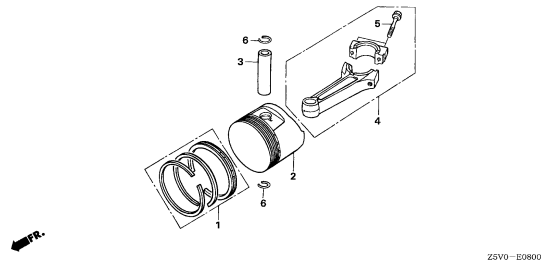
**C 5**



**E-8**

PISTON

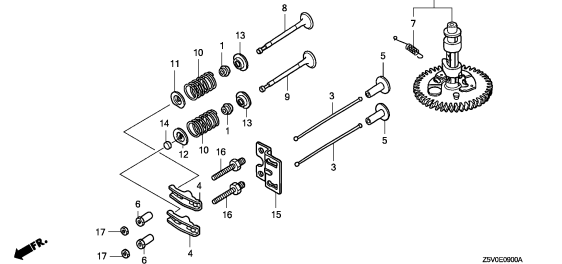
**C 6**



**E-9**

CAMSHAFT

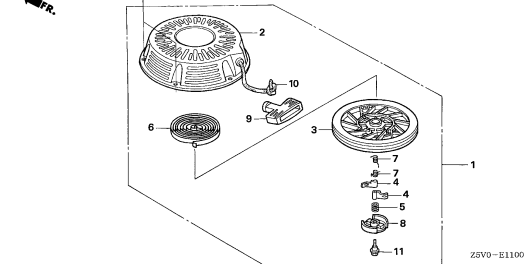
**C 8**



**E-11**

RECOIL STARTER

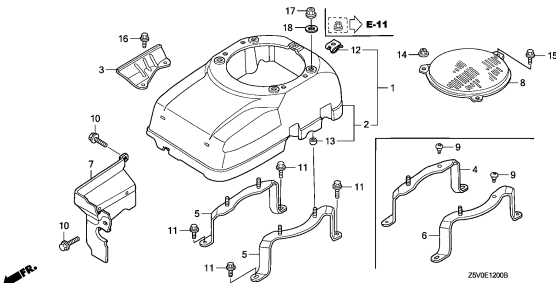
**C11**



**E-12**

FAN COVER

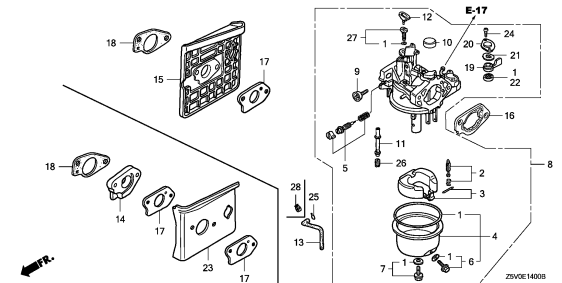
**C12**



**E-14**

CARBURETOR

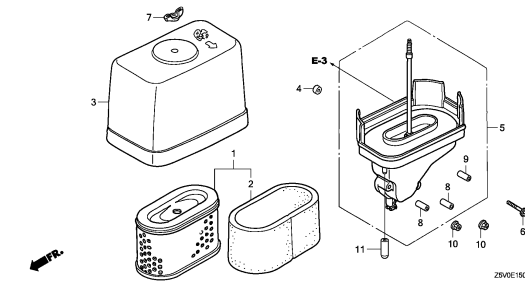
**C13**



**E-15**

AIR CLEANER

**C15**



**2**

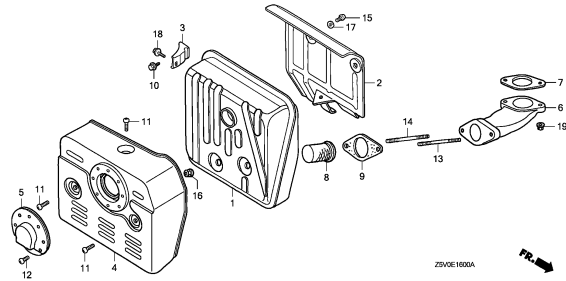
# ENGINE GROUP

**B15**

**E-16**

**MUFFLER**

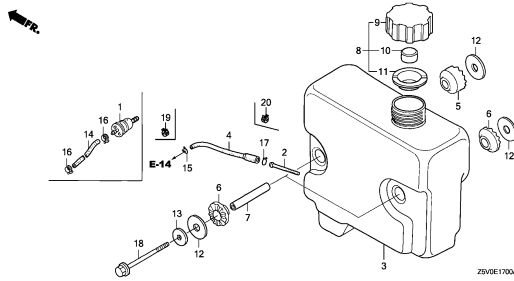
**C16**



**E-17**

**FUEL TANK**

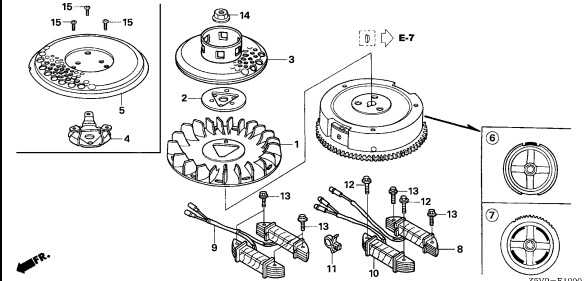
**D 1**



**E-19**

**FLYWHEEL**

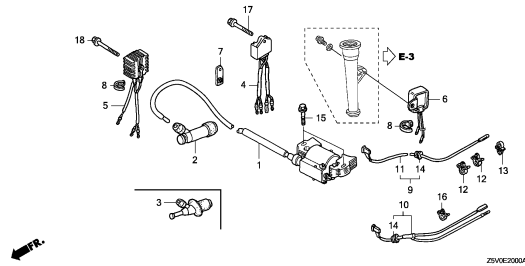
**D 3**



**E-20**

**IGNITION COIL**

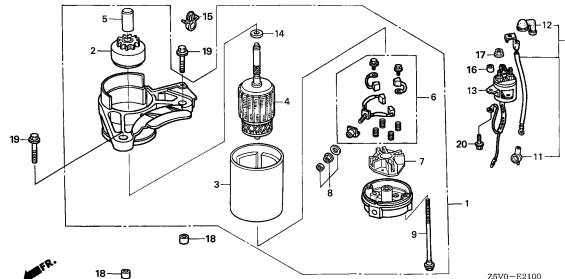
**D 4**



**E-21**

**STARTER MOTOR**

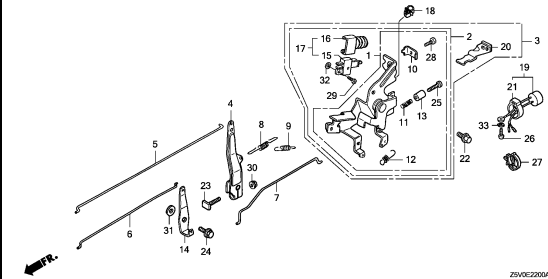
**D 5**



**E-22**

**CONTROL(1)**

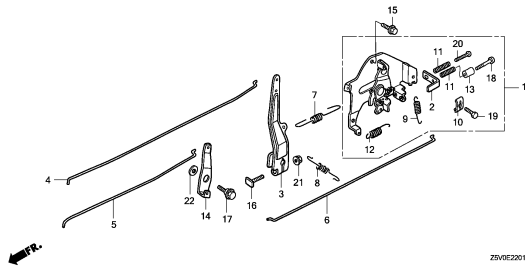
**D 6**



**E-22-1**

**CONTROL(2)**

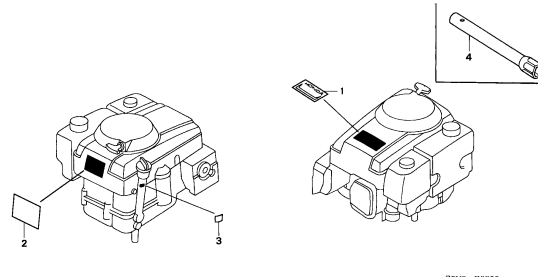
**D 8**



**E-28**

**LABEL**

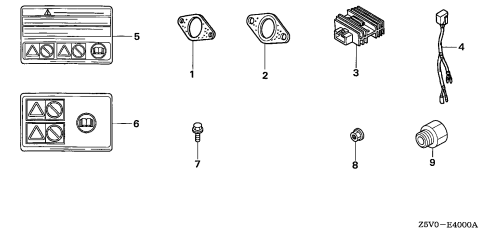
**D 9**



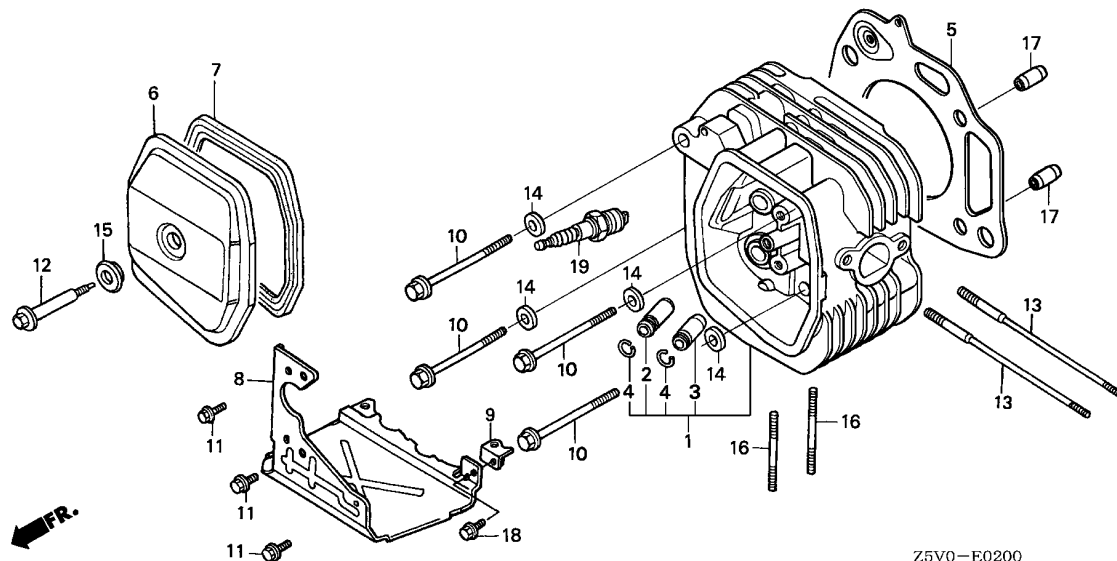
**E-40**

**OTHER PARTS**

**D10**



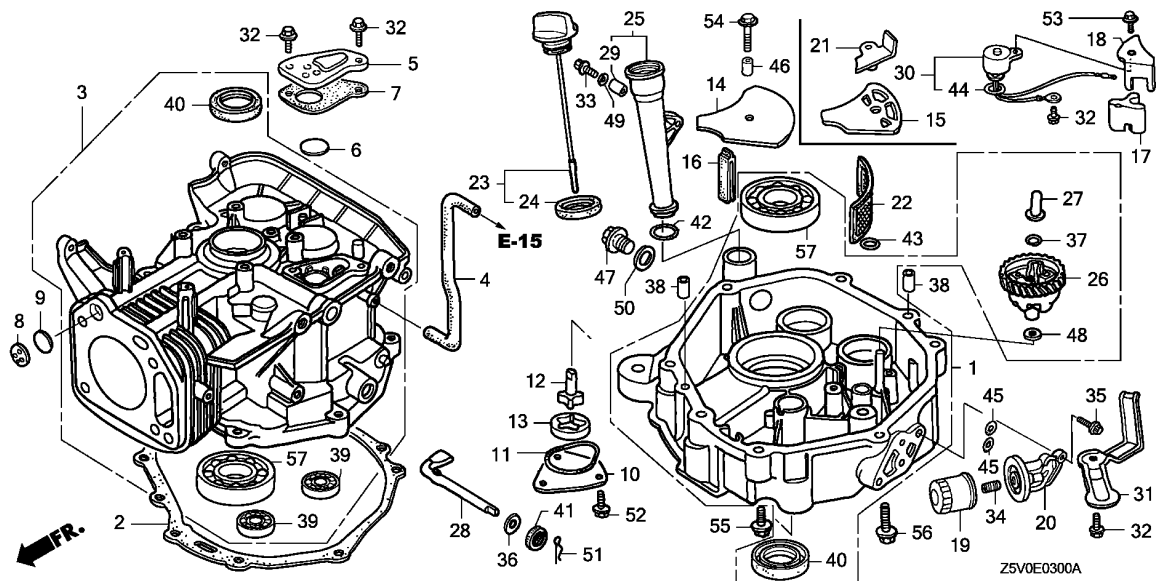
**2**



Z5V0-E0200

Ref. No.	L.O.N.	(Relative ref. Number) Description	F.R.T.
1	1111N3	HEAD, CYLINDER ..... .INCLUDES: Valve clearance adjustment and reface	1.0
2	1111E9	GUIDE, INTAKE VALVE ..... .INCLUDES: Valve clearance adjustment	0.8
	1111E9E	.Replace intake and exhaust all add .....	0.2
3	1111E8	GUIDE, EXHAUST VALVE ..... .INCLUDES: Valve clearance adjustment	0.8
	1111E8E	.Replace intake and exhaust all add .....	0.2
5	1111N4	GASKET, CYLINDER HEAD .....	0.6
6	1111D5	COVER, CYLINDER HEAD AND/OR PACKING, HEAD COVER .....	0.1
19	6141C1	PLUG, SPARK .....	0.1

Ref. No.	Part No.	Description	Reqd. QTY		Serial No.	Parts catalogue code
			GXV 390 UT1	GXV 390 RT1		
1	12200-Z1E-405	HEAD COMP., CYLINDER .....	1	1		
2	12204-ZE2-306	GUIDE, IN. VALVE (O.S.) .....	1	1		
3	12205-ZE2-305	GUIDE, EX. VALVE (O.S.) .....	1	1		
4	12216-ZE2-300	CLIP, VALVE GUIDE .....	2	2		
5	12251-ZF5-H03	GASKET, CYLINDER HEAD .....	1	1		
6	12310-ZE8-000	COVER, HEAD .....	1	1		
7	12391-ZE8-000	PACKING, HEAD COVER .....	1	1		
8	18345-ZF5-020	COVER, UNDER .....	1	1	-----	DABG,DAEU,DAS,DAU,DA23,DA33,DETR,DET3,DE33,DNE4,DN4,DXE2,DXE4,DX2
9	18347-ZE8-000	STAY COMP., UNDER COVER .....	1	1	-----	DABG,DAEU,DAS,DAU,DA23,DA33,DETR,DET3,DE33,DNE4,DN4,DXE2,DXE4,DX2
10	90003-Z1E-000	BOLT, FLANGE, 10X85 .....	4	4		
11	90013-883-000	BOLT, FLANGE, 6X12(CT200) ...	3	3	-----	DABG,DAEU,DAS,DAU,DA23,DA33,DETR,DET3,DE33,DNE4,DN4,DXE2,DXE4,DX2
12	90014-ZE8-000	BOLT, HEAD COVER .....	1	1		
13	90042-ZE8-000	BOLT, STUD, 8X131.5 .....	2	2	-----	DABG,DAEU,DAS,DAU,DA23,DA33,DETR,DET3,DE33,DNE4,DN4,DXE2,DXE4,DX2
	90042-ZE8-700	BOLT, STUD, 8X138.5 .....	2	2	-----	DCA,DFWT
14	90401-437-000	WASHER, PLAIN, 10MM .....	4	4		
15	90441-ZE2-010	WASHER COMP., HEAD COVER .....	1	1		
16	92900-08022-0B	BOLT, STUD, 8X22 .....	2	-	-----	1014215 DFWT
	92900-08032-0B	BOLT, STUD, 8X32 .....	2	-	-----	DABG,DAEU,DAS,DAU,DA23,DA33,DCA,DETR,DET3,DE33,DNE4,DN4,DXE2,DXE4,DX2
			2	-	-----	1014216 DFWT
			-	2		
17	94301-12200	DOWEL PIN, 12X20 .....	2	2		
18	95701-06012-00	BOLT, FLANGE, 6X12 .....	1	1	-----	DABG,DAEU,DAS,DAU,DA23,DA33,DETR,DET3,DE33,DNE4,DN4,DXE2,DXE4,DX2
19	98079-55876	PLUG, SPARK (BPR5ES) .....	1	1		



Ref. No.	L.O.N.	(Relative ref. Number) Description	F.R.T.
1	1131C1	PAN, OIL .....	0.3
2	1131C2	PACKING, OIL PAN .....	0.2
3	1101A0	BARREL, CYLINDER .....	1.7
4	1111K5	TUBE, BREATHER .....	0.1
5		(7)	
	1111D1	COVER, BREATHER AND/OR PACKING, BREATHER COVER .....	0.3
6	1111K9	VALVE, BREATHER .....	0.3
13		(10,11,12)	
	1131B3	ROTOR, OIL PUMP OUTER .....	0.1
19	110175	CARTRIDGE, OIL FILTER .....	0.1
20		(45)	
	1101A2	BASE, OIL FILTER .....	0.2
22		(14,15)	
	1101D2	SCREEN, OIL FILTER .....	0.3
25		(42)	
	1101B9	EXTENSION, OIL FILLER AND/OR PACKING, OIL FILLER EXTENSION .....	0.1
26	1161C4	GOVERNOR ASSEMBLY .....	0.4
27	1161B6	SLIDER, GOVERNOR .....	0.4
28	1161B4	SHAFT, GOVERNOR ARM .....	0.4
30		(44)	
	6151E8	SWITCH, OIL LEVEL .....	0.3
+39	1101F7	BEARING, BALANCER WEIGHT :LEFT .....	0.5

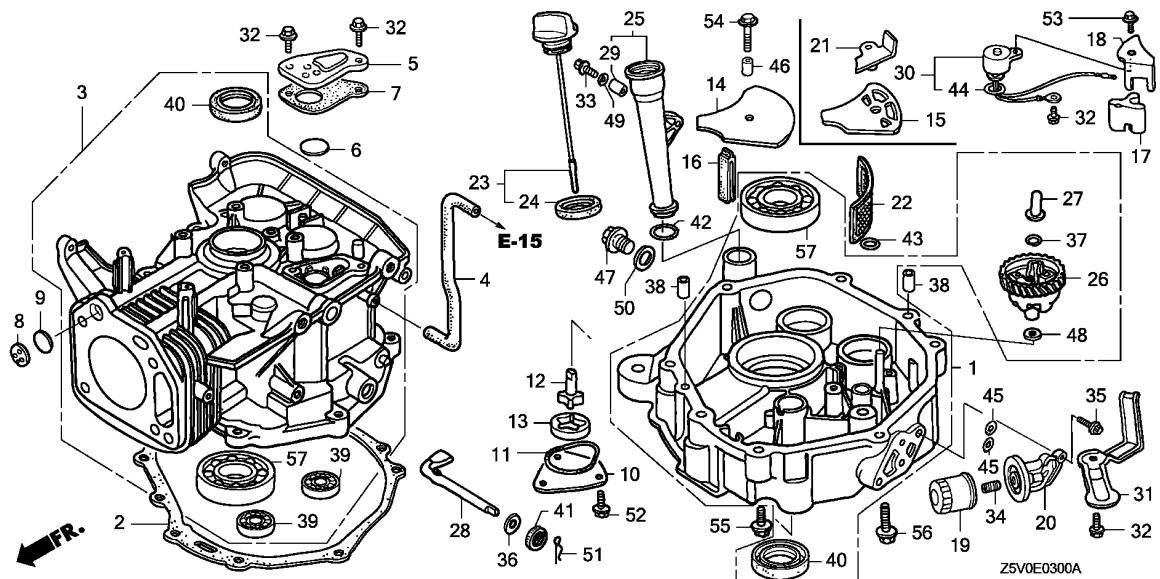
Ref. No.	Part No.	Description	Reqd. QTY		Serial No.	Parts catalogue code
			GXV 390 UT1	GXV 390 RT1		
1	11300-Z1E-405	PAN ASSY., OIL .....	1	1	----- DAS,DET3	
	11300-Z1E-406	.....	1	1	----- DA23	
	11300-Z1E-407	.....	1	1	----- DABG,DAEU,DAU,DETR,DE33,DFWT,DNE4,DN4,DXE4	
	11300-Z1E-408	.....	1	1	----- DA33,DCA,DXE2,DX2	
2	11381-ZE9-801	PACKING, OIL PAN .....	1	1		
3	12000-Z1E-405	BARREL ASSY., CYLINDER .....	1	1		
4	12315-ZF5-000	TUBE, BREATHER .....	1	1		
5	12370-ZF5-000	CAP, BREATHER CHAMBER .....	1	1		
6	12372-ZE2-300	VALVE, BREATHER .....	1	1		
7	12373-ZE8-000	PACKING, BREATHER CAP .....	1	1		
8	12375-ZE9-H00	PLATE, ONE-WAY VALVE .....	1	1	----- DA23,DA33,DCA,DXE2,DX2	
9	12376-ZE8-000	VALVE, ONE WAY .....	1	1	----- DA23,DA33,DCA,DXE2,DX2	
10	15130-ZE8-000	COVER, OIL PUMP .....	1	1		
11	15131-ZE9-003	O-RING, PUMP COVER .....	1	1		
12	15330-ZE8-000	ROTOR COMP., INNER .....	1	1		
13	15332-891-003	ROTOR, OIL PUMP OUTER .....	1	1		
14	15334-ZE8-010	PLATE, OIL FILTER .....	1	1	----- DABG,DAEU,DAS,DAU,DETR,DET3,DE33,DFWT,DNE4,DN4,DXE4	
15	15334-ZE8-811	PLATE, OIL FILTER .....	1	1	----- DA23,DA33,DCA,DXE2,DX2	
16	15335-ZE9-000	RUBBER, OIL RETURN .....	1	1		
17	15336-ZE8-000	STOPPER, OIL .....	1	1	----- DA23,DA33,DCA,DXE2,DX2	
18	15337-ZE8-000	PLATE, OIL STOPPER .....	1	1	----- DA23,DA33,DCA,DXE2,DX2	
19	15400-ZJ1-004	CARTRIDGE, OIL FILTER .....				
		(TOYO ROKI)				
20	15411-ZF5-W00	BASE, OIL FILTER .....	1	1	----- DAS,DA23,DET3	
			1	1	----- DAS,DA23,DET3	
21	15420-ZE8-000	PLATE COMP., SUCTION .....	1	1	----- DA23,DA33,DCA,DXE2,DX2	



E-3

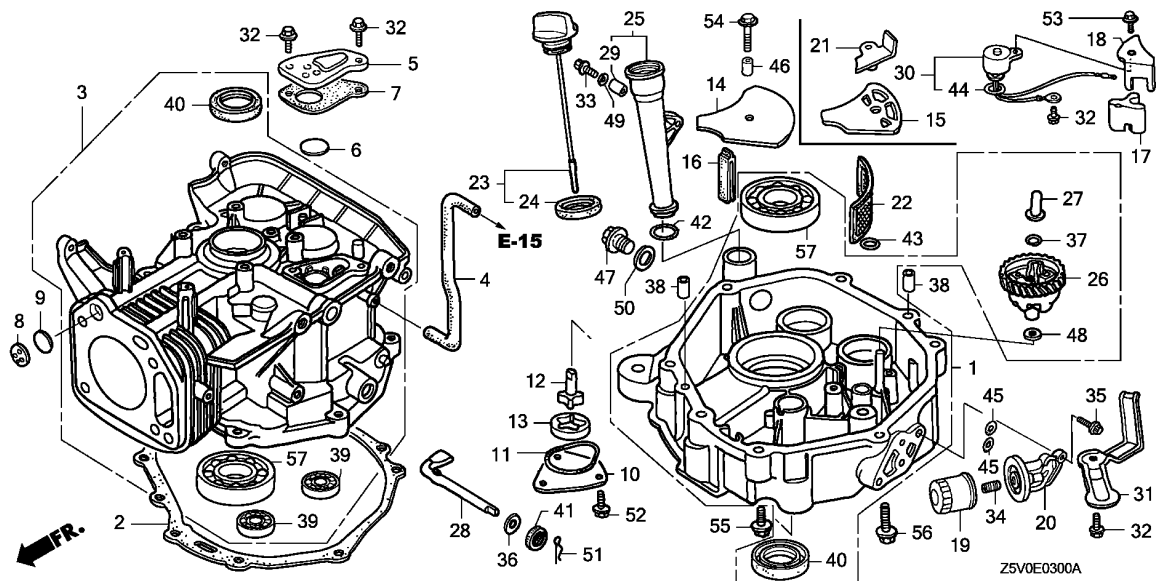
CYLINDER BARREL/OIL PAN

C 3



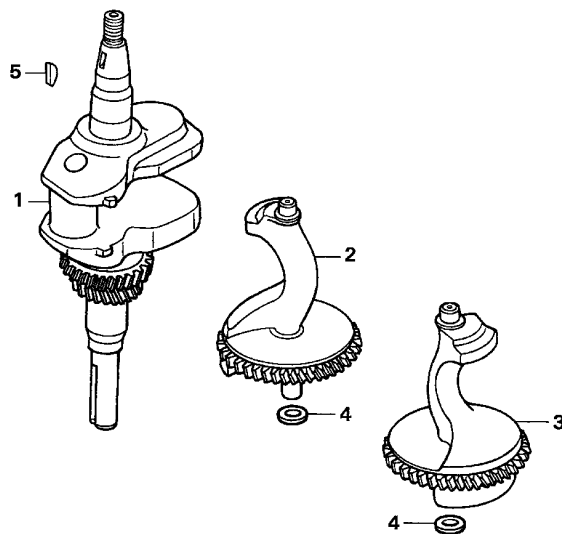
Ref. No.	L.O.N.	(Relative ref. Number) Description	F.R.T.
+39	1101F7A	.Replace right balancer weight bearing add .....	0.1
	1101F8	BEARING, BALANCER WEIGHT :RIGHT .....	0.5
	1101F8A	.Replace left balancer weight bearing add .....	0.1
40	1101E6	OIL SEAL, CRANKSHAFT :UPPER ..	1.1
	1101E7	OIL SEAL, CRANKSHAFT :LOWER ..	0.4
41	1101C4	OIL SEAL, GOVERNOR ARM SHAFT ..	0.4
50	1101D5	WASHER, DRAIN PLUG .....	0.1
57	1101J6	BEARING, CRANKSHAFT :UPPER ...	1.2
	1101J7	BEARING, CRANKSHAFT :LOWER ...	0.5

Ref. No.	Part No.	Description	Reqd. QTY		Serial No.	Parts catalogue code
			GXV 390 UT1	GXV 390 RT1		
22	15421-ZE9-003	SCREEN, OIL FILTER .....	1	1		
23	15600-ZF5-000	CAP ASSY., OIL FILLER .....	1	1		
24	15625-ZE8-000	PACKING, OIL FILLER CAP .....	1	1		
25	15630-ZE8-000	EXTENSION, OIL FILLER .....	1	1		
26	16510-ZE3-000	GOVERNOR ASSY. ....	1	1		
27	16531-Z0A-000	SLIDER, GOVERNOR .....	1	1		
28	16541-ZE8-010	SHAFT, GOVERNOR ARM .....	1	1		
29	17240-ZE6-000	COLLAR, EXTENSION .....	1	1		
30	35410-ZF5-013	SWITCH COMP., OIL LEVEL .....	1	1	-----	DA23,DA33,DCA,DXE2,DX2
31	35419-ZF5-000	PROTECTOR, SWITCH .....	1	1	-----	DA23,DA33,DCA,DXE2,DX2
32	90013-883-000	BOLT, FLANGE, 6X12(CT200) ...	2	2	-----	DABG,DAEU,DAS,DAU,DETR,DET3,DE33,DFWT,DNE4,DN4,DXE4
			4	4	-----	DA23,DA33,DCA,DXE2,DX2
33	90014-ZE6-000	BOLT, FLANGE, 6X35(CT200) ...	1	1		
34	90018-PN3-000	HOLDER, OIL FILTER .....	1	1	-----	DAS,DA23,DET3
35	90121-952-000	BOLT, FLANGE, 6X25(CT200) ...	2	2	-----	DAS,DA23,DET3
36	90406-VM6-000	WASHER, THRUST, 8.1MM .....	1	1		
37	90602-ZE1-000	CLIP, GOVERNOR HOLDER .....	1	1		
38	90701-HC4-000	DOWEL PIN, 8X12 .....	2	2		
39	91001-ZF5-003	BEARING, RADIAL BALL, 6202 ..	2	2		
40	91201-Z1C-003	OIL SEAL, 35X52X8 .....	2	2		
41	91203-952-771	OIL SEAL, 8X14X5 .....	1	1		
42	91301-ZE9-003	O-RING, 22.5X2.2 .....	1	1		
43	91302-ZE9-003	O-RING, 11.8X2.4 .....	1	1		
44	91302-ZL8-003	O-RING, 11.8X2.4 .....	1	1	-----	DA23,DA33,DCA,DXE2,DX2
45	91303-HA0-004	O-RING, 11X1.9(NOK) .....	2	2	-----	DAS,DA23,DET3



Ref. No.	Part No.	Description	Reqd. QTY		Serial No.	Parts catalogue code
			GXV 390 UT1	GXV 390 RT1		
46	91501-ZF5-000	COLLAR, OIL FILTER SETTING ..	1	1	-----	DABG,DAEU,DAS,DAU,DETR,DET3,DE33,DFWT,DNE4,DN4,DXE4
47	92800-20000	BOLT, DRAIN PLUG, 20MM .....	1	1	-----	
48	94101-06800	WASHER, PLAIN, 6MM .....	1	1	-----	
49	94103-06700	WASHER, PLAIN, 6MM .....	1	1	-----	DABG,DA23,DA33,DCA,DETR,DFWT,DNE4,DN4,DXE2,DXE4,DX2
50	94109-20000	WASHER, DRAIN PLUG, 20MM .....	1	1	-----	
51	94251-10000	PIN, LOCK, 10MM .....	1	1	-----	
52	95701-06012-00	BOLT, FLANGE, 6X12 .....	3	3	-----	
53	95701-06016-00	BOLT, FLANGE, 6X16 .....	1	1	-----	DA23,DA33,DCA,DXE2,DX2
54	95701-06025-00	BOLT, FLANGE, 6X25 .....	1	1	-----	
55	95701-08040-08	BOLT, FLANGE, 8X40 .....	6	6	-----	
56	95701-08060-08	BOLT, FLANGE, 8X60 .....	1	1	-----	
57	96100-62073-00	BEARING, RADIAL BALL, 6207 ..	2	2	-----	



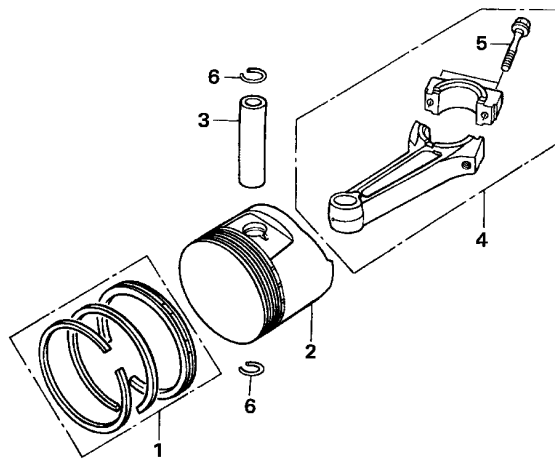


FR.

Z5V0-E0700

Ref. No.	L.O.N.	(Relative ref. Number) Description	F.R.T.
1	1101F0	CRANKSHAFT .....	1.1
2	1101K2	WEIGHT A, BALANCER .....	0.4
	1101K2A	.Replace one balancer weight add .....	0.1
3	1101K3	WEIGHT B, BALANCER .....	0.4
	1101K3A	.Replace one balancer weight add .....	0.1

Ref. No.	Part No.	Description	Reqd. QTY		Serial No.	Parts catalogue code
			GXV 390 UT1	GXV 390 RT1		
1	13310-ZF5-040	CRANKSHAFT COMP. ....	1	1		
2	13351-ZF5-030	WEIGHT A, BALANCER .....	1	1		
3	13356-ZF5-040	WEIGHT B, BALANCER .....	1	1		
4	90417-HA0-000	WASHER, THRUST, 15MM .....	2	2		
5	90741-ZE2-000	KEY, SPECIAL WOODRUFF, 25X18	1	1		



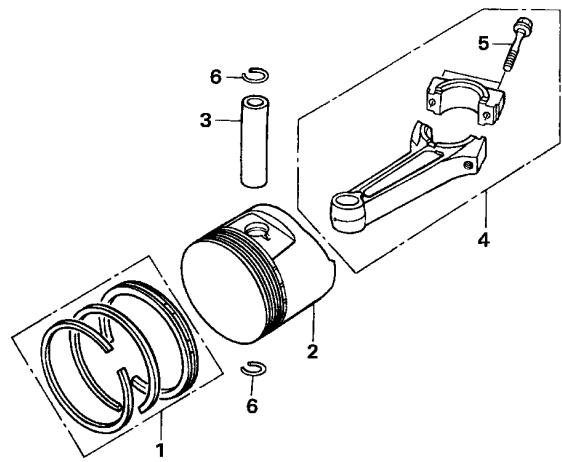
Z5V0-E0800

Ref. No.	L.O.N.	(Relative ref. Number) Description	F.R.T.
2	1111R1	(1,3,4) PISTON AND/OR RING SET AND/OR BEARING AND/OR ROD ..... .INCLUDES: Inspection/ Measurement/Cleaning	1.2

Ref. No.	Part No.	Description	Reqd. QTY		Serial No.	Parts catalogue code
			GXV 390 UT1	GXV 390 RT1		
1	13010-Z1C-800	RING SET, PISTON (STD.)(RIKEN)	1	-	-----	1019651
	13011-Z1C-800	RING SET, PISTON (0.25)(RIKEN)	(1)	-	-----	1019651
	13012-Z1C-800	RING SET, PISTON (0.50)(RIKEN)	(1)	-	-----	1019651
	13013-Z1C-800	RING SET, PISTON (0.75)(RIKEN)	(1)	-	-----	1019651
	13010-Z5R-004	RING SET, PISTON (STD.) (TEIKOKU)	1	-	1019652	
			-	1		
	13010-Z5T-003	RING SET, PISTON (STD.)(RIKEN)	1	-	1019652	
			-	1		
	13011-Z5R-004	RING SET, PISTON (0.25) (TEIKOKU)	(1)	-	1019652	
			-	(1)		
	13011-Z5T-003	RING SET, PISTON (0.25)(RIKEN)	(1)	-	1019652	
			-	(1)		
	13012-Z5R-004	RING SET, PISTON (0.50) (TEIKOKU)	(1)	-	1019652	
			-	(1)		
	13012-Z5T-003	RING SET, PISTON (0.50)(RIKEN)	(1)	-	1019652	
			-	(1)		
	13013-Z5R-004	RING SET, PISTON (0.75) (TEIKOKU)	(1)	-	1019652	
			-	(1)		
	13013-Z5T-003	RING SET, PISTON (0.75)(RIKEN)	(1)	-	1019652	
			-	(1)		
2	13101-ZF6-W00	PISTON (STD.) .....	1	-	-----	1019651
	13102-ZF6-W00	PISTON (0.25) .....	(1)	-	-----	1019651
	13103-ZF6-W00	PISTON (0.50) .....	(1)	-	-----	1019651
	13104-ZF6-W00	PISTON (0.75) .....	(1)	-	-----	1019651

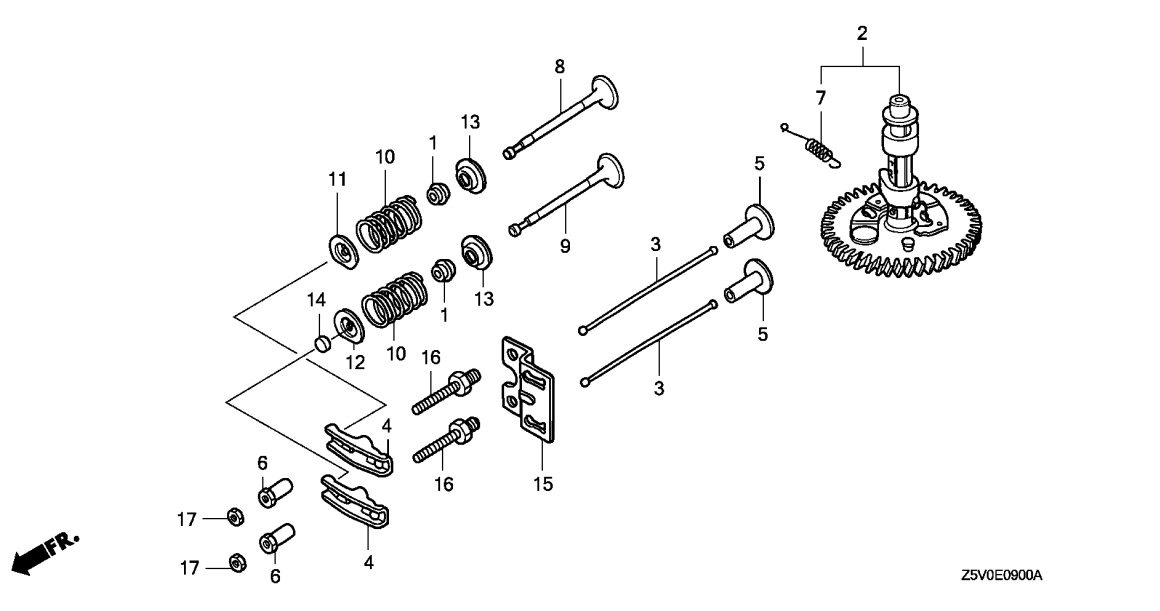






Z5V0-E0800

Ref. No.	Part No.	Description	Reqd. QTY		Serial No.	Parts catalogue code
			GXV 390 UT1	GXV 390 RT1		
(2)	13101-Z5T-000	PISTON (STD.)	1	-	1019652	
	13102-Z5T-000	PISTON (0.25)	(1)	-	1019652	
	13103-Z5T-000	PISTON (0.50)	(1)	-	1019652	
	13104-Z5T-000	PISTON (0.75)	(1)	-	1019652	
3	13111-ZF6-000	PIN, PISTON	1	1		
4	13200-Z1E-000	ROD ASSY., CONNECTING (STD.)	1	1		
	13200-Z1E-305	ROD ASSY., CONNECTING (0.25 UNDER SIZE)	(1)	(1)		
5	90001-ZE8-000	BOLT, CONNECTING ROD	2	2		
6	90601-ZE3-000	CLIP, PISTON PIN, 20MM	2	2		

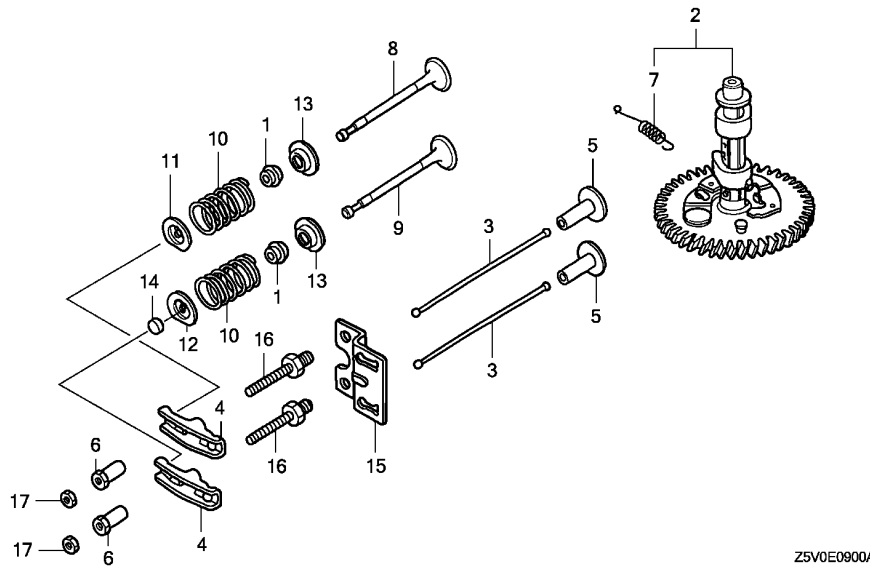


Ref. No.	L.O.N.	(Relative ref. Number) Description	F.R.T.
1	1111K2	SEAL, INTAKE VALVE STEM ..... .INCLUDES: Valve clearance adjustment	0.6
	1111K2E	.Replace intake and exhaust all add .....	0.1
	1111K1	SEAL, EXHAUST VALVE STEM ..... .INCLUDES: Valve clearance adjustment	0.6
	1111K1E	.Replace intake and exhaust all add .....	0.1
2	1111C2	CAMSHAFT .....	0.6
		.INCLUDES: Valve clearance adjustment	
3	1111L6	ROD, PUSH :INTAKE .....	0.2
		.INCLUDES: Valve clearance adjustment	
	1111L6A	.Replace exhaust push rod add	0.1
	1111L7	ROD, PUSH :EXHAUST .....	0.2
		.INCLUDES: Valve clearance adjustment	
	1111L7A	.Replace intake push rod add	0.1
4	1111A2	ARM, ROCKER :INTAKE .....	0.2
		.INCLUDES: Valve clearance adjustment	

Z5V0E0900A

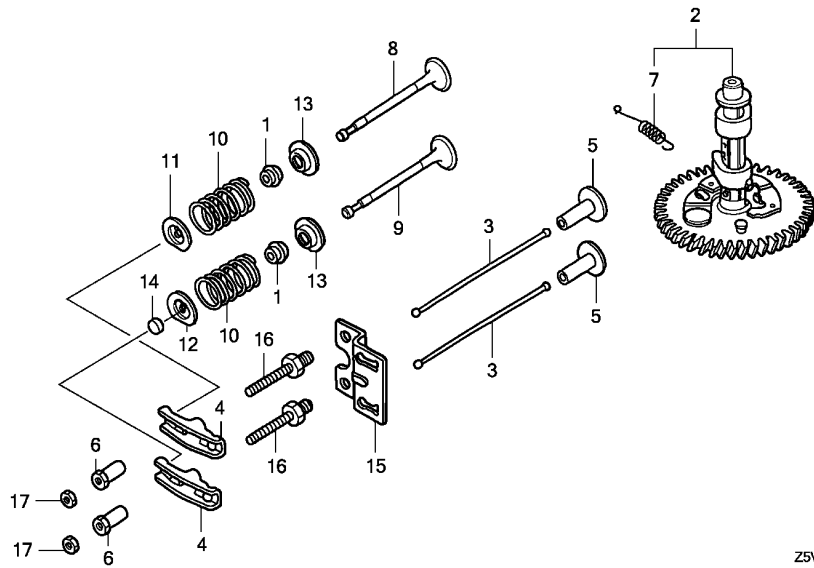
Ref. No.	Part No.	Description	Reqd. QTY		Serial No.	Parts catalogue code
			GXV 390 UT1	GXV 390 RT1		
1	12209-ZE8-003	SEAL, VALVE STEM .....	2	2		
2	14100-ZF5-L03	CAMSHAFT ASSY. ....	1	1	-----	----- DCA,DFWT
	14100-ZF5-020	.....	1	1	-----	----- DABG,DAEU,DAS,DAU,DA23,DA33,DETR,DET3,DE33,DNE4,DN4,DXE2,DXE4,DX2
3	14410-Z1C-000	ROD, PUSH .....	2	2		
4	14431-ZE2-010	ARM, VALVE ROCKER .....	2	2		
5	14441-ZE2-000	LIFTER, VALVE .....	2	2		
6	14451-ZE1-013	PIVOT, ROCKER ARM .....	2	2		
7	14568-ZE1-000	SPRING, WEIGHT RETURN .....	1	1		
8	14711-ZE3-000	VALVE, IN. ....	1	1		
9	14721-ZE3-000	VALVE, EX. ....	1	1		
10	14751-Z1C-000	SPRING, VALVE .....	2	2		
11	14771-ZE2-000	RETAINER, IN. VALVE SPRING ..	1	1		
12	14773-ZE2-000	RETAINER, EX. VALVE SPRING ..	1	1		
13	14775-ZE2-010	SEAT, VALVE SPRING .....	2	2		
14	14781-ZE2-000	ROTATOR, VALVE .....	1	1		
15	14791-ZE9-010	GUIDE, PUSH ROD .....	1	1		
16	90012-ZE0-010	BOLT, PIVOT, 8MM .....	2	2		
17	90206-ZE1-000	NUT, PIVOT ADJUSTING .....	2	2		





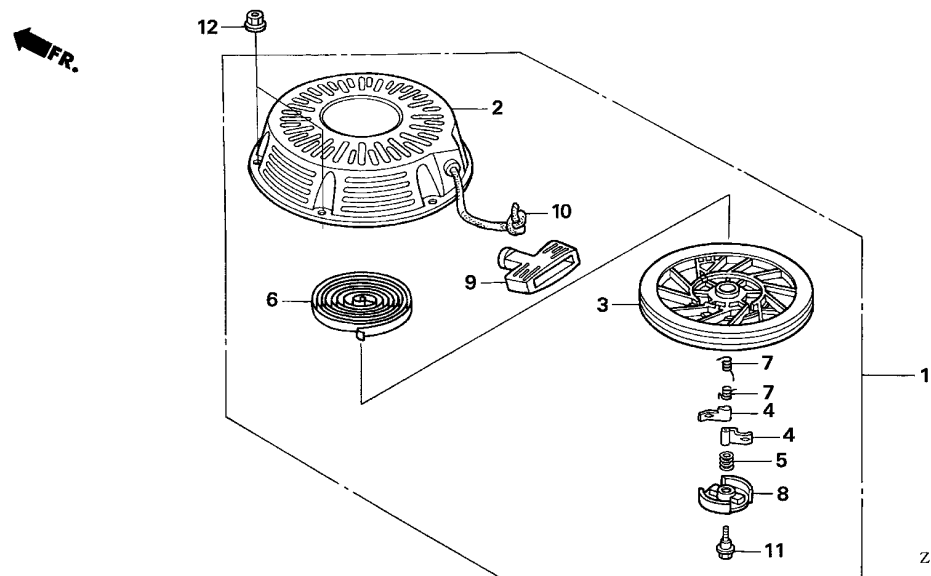
Ref. No.	L.O.N.	(Relative ref. Number) Description	F.R.T.
+ 4	1111A2A	.Replace exhaust rocker arm add .....	0.1
	1111A1	ARM, ROCKER :EXHAUST .....	0.2
		.INCLUDES: Valve clearance adjustment	
	1111A1A	.Replace intake rocker arm add .....	0.1
5	1111L9	LIFTER, VALVE :INTAKE .....	0.6
		.INCLUDES: Valve clearance adjustment	
		.NOTE: Same time for two units	
	1111M0	LIFTER, VALVE :EXHAUST .....	0.6
		.INCLUDES: Valve clearance adjustment	
		.NOTE: Same time for two units	
8	1111L1	VALVE, INTAKE .....	0.7
		.INCLUDES: Valve clearance adjustment and reface	
	1111L1E	.Replace intake and exhaust all add .....	0.1
9	1111L0	VALVE, EXHAUST .....	0.7
		.INCLUDES: Valve clearance adjustment and reface	
	1111L0E	.Replace intake and exhaust all add .....	0.1
+10	1111P3	SPRING, VALVE :INTAKE .....	0.6

Z5V0E0900A



Ref. No.	L.O.N.	(Relative ref. Number) Description	F.R.T.
+10		.INCLUDES: Engine removal and installation .INCLUDES: Valve clearance adjustment	
1111P3A		.Replace intake and exhaust all add .....	0.1
1111P4		SPRING, VALVE :EXHAUST ..... .INCLUDES: Engine removal and installation .INCLUDES: Valve clearance adjustment	0.6
1111P4A		.Replace intake and exhaust all add .....	0.1
14 1111J7		ROTATOR, VALVE ..... .INCLUDES: Valve clearance adjustment	0.2

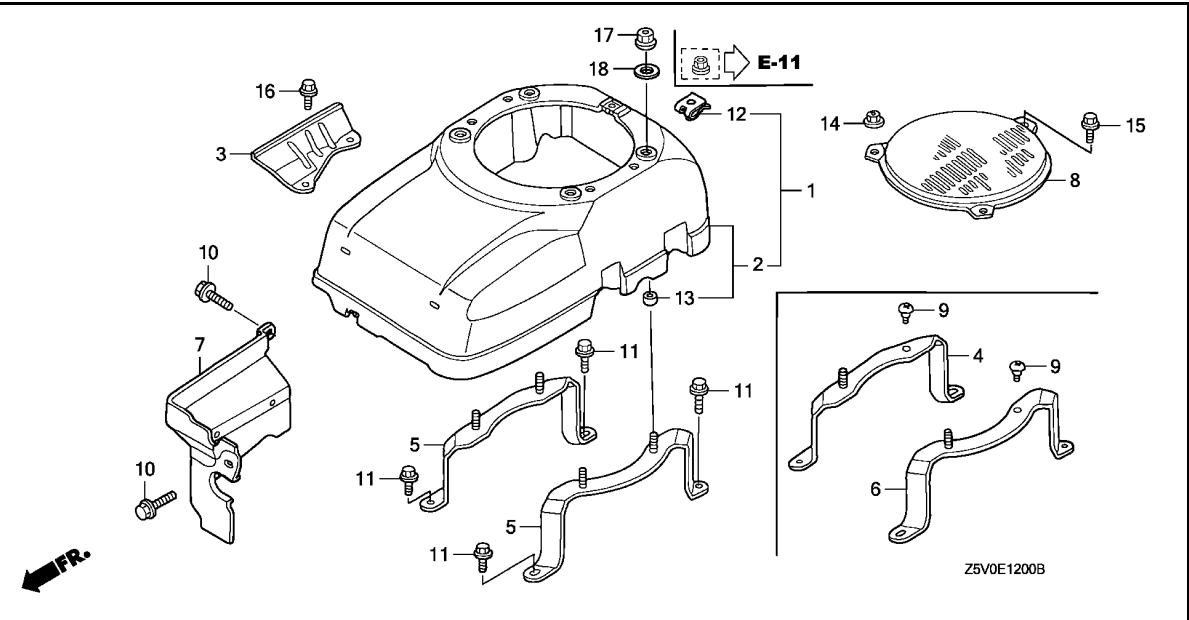




Ref. No.	L.O.N.	(Relative ref. Number) Description	F.R.T.
1	1121B9	STARTER, RECOIL .....	0.1
3	1121B1	REEL, RECOIL STARTER .....	0.3
4		(7)	
	1121B0	RATCHET, STARTER AND/OR SPRING, RATCHET .....	0.2
6	1121B7	SPRING, RECOIL STARTER RETURN .....	0.3
8		(5)	
	1121B2	RETAINER, SPRING .....	0.2
10	1121B3	ROPE, RECOIL STARTER .....	0.3

Z5V0-E1100

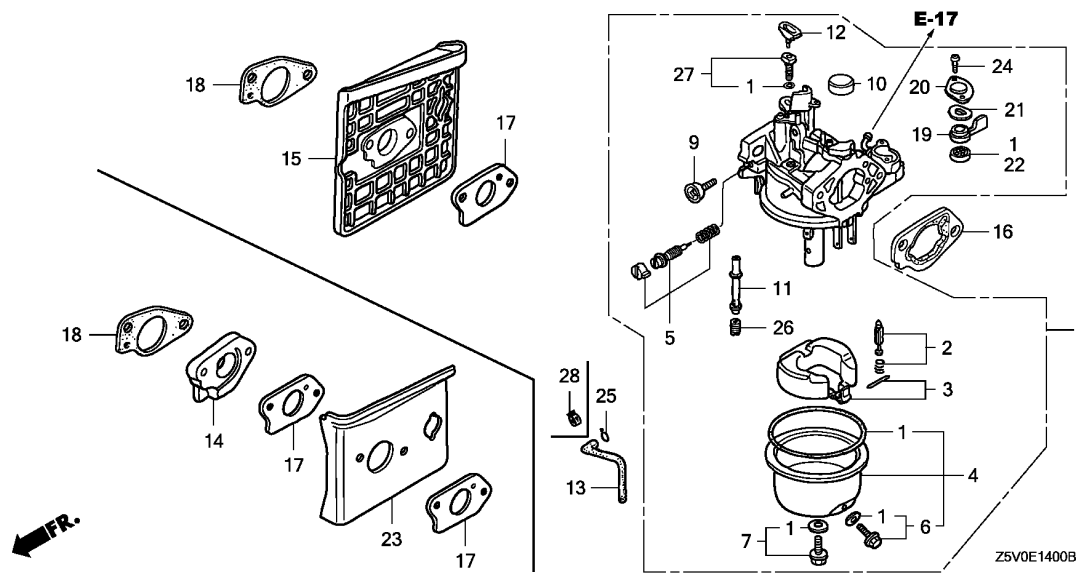
Ref. No.	Part No.	Description	Reqd. QTY		Serial No.	Parts catalogue code
			GXV 390 UT1	GXV 390 RT1		
1	28400-ZE3-W01ZP	STARTER ASSY., RECOIL	1	1	-----	DABG,DAEU,DAS,DA23,DA33,DET3,DE33,DNE4,DN4,DXE2,DXE4,DX2
2	28410-ZE3-W01ZP	CASE COMP., RECOIL STARTER	1	1	-----	DABG,DAEU,DAS,DA23,DA33,DET3,DE33,DNE4,DN4,DXE2,DXE4,DX2
		*R280*.....POWER RED	1	1	-----	DABG,DAEU,DAS,DA23,DA33,DET3,DE33,DNE4,DN4,DXE2,DXE4,DX2
3	28421-ZE3-W01	PULLEY, RECOIL STARTER .....	1	1	-----	DABG,DAEU,DAS,DA23,DA33,DET3,DE33,DNE4,DN4,DXE2,DXE4,DX2
4	28422-ZE2-W01	RATCHET, STARTER .....	2	2	-----	DABG,DAEU,DAS,DA23,DA33,DET3,DE33,DNE4,DN4,DXE2,DXE4,DX2
5	28441-ZE2-W01	SPRING, FRICTION .....	1	1	-----	DABG,DAEU,DAS,DA23,DA33,DET3,DE33,DNE4,DN4,DXE2,DXE4,DX2
6	28442-ZE2-W01	SPRING, STARTER RETURN .....	1	1	-----	DABG,DAEU,DAS,DA23,DA33,DET3,DE33,DNE4,DN4,DXE2,DXE4,DX2
7	28443-ZE2-W01	SPRING, RATCHET .....	2	2	-----	DABG,DAEU,DAS,DA23,DA33,DET3,DE33,DNE4,DN4,DXE2,DXE4,DX2
8	28444-ZE2-W01	RETAINER, SPRING .....	1	1	-----	DABG,DAEU,DAS,DA23,DA33,DET3,DE33,DNE4,DN4,DXE2,DXE4,DX2
9	28461-ZE2-W02	GRIP, STARTER .....	1	1	-----	DABG,DAEU,DAS,DA23,DA33,DET3,DE33,DNE4,DN4,DXE2,DXE4,DX2
10	28462-ZE3-W01	ROPE, RECOIL STARTER .....	1	1	-----	DABG,DAEU,DAS,DA23,DA33,DET3,DE33,DNE4,DN4,DXE2,DXE4,DX2
11	90004-ZE2-W01	SCREW, CENTER .....	1	1	-----	DABG,DAEU,DAS,DA23,DA33,DET3,DE33,DNE4,DN4,DXE2,DXE4,DX2
12	94050-06000	NUT, FLANGE, 6MM .....	4	4	-----	DABG,DAEU,DAS,DA23,DA33,DET3,DE33,DNE4,DN4,DXE2,DXE4,DX2



Ref. No.	L.O.N.	(Relative ref. Number) Description	F.R.T.
1	(2)		
1141G8		COVER, ENGINE COOLING FAN ....	0.2
5	(4,6)		
1141K9		BRACKET, FAN COVER :LEFT .....	0.3
1141L0		BRACKET, FAN COVER :RIGHT .....	0.3
7		SHROUD, ENGINE :FRONT .....	0.3

Ref. No.	Part No.	Description	Reqd. QTY		Serial No.	Parts catalogue code
			GXV 390 UT1	GXV 390 RT1		
1	19610-ZE9-V01ZB	COVER COMP., FAN				
		*NH1*.....BLACK	1	1	-----	DFWT
	19610-ZE9-V01ZC	*R280*.....POWER RED	1	1	-----	DCA
	19610-ZF5-V31ZC	*R280*.....POWER RED	1	1	-----	DAU
2	19610-ZF5-V11ZA	COVER COMP., FAN				
		*NH1*.....BLACK	1	1	-----	DETR
	19610-ZF5-V11ZC	*R280*.....POWER RED	1	1	-----	DAEU,DAS,DETR,DET3,DE33,DNE4,DXE2,DXE4
	19610-ZF5-V21ZC	*R280*.....POWER RED	1	1	-----	DABG,DA23,DA33,DN4,DX2
3	19612-ZF5-010	PLATE, SIDE .....	1	1	-----	DABG,DA23,DA33,DN4,DX2
4	19617-ZE9-V00	BRACKET, R. FAN COVER .....	1	1	-----	DAU,DCA,DFWT
5	19617-ZF5-V00	BRACKET, FAN COVER .....	2	2	-----	DABG,DAEU,DAS,DA23,DA33,DETR,DET3,DE33,DNE4,DN4,DXE2,DXE4,DX2
6	19627-ZE9-V00	BRACKET, L. FAN COVER .....	1	1	-----	DAU,DCA,DFWT
7	19631-Z1E-V00	SHROUD .....	1	1	-----	DCA,DFWT
8	28456-ZF5-V00ZA	COVER, SCREEN GRID				
		*NH1*.....BLACK	1	1	-----	DAU,DCA,DFWT
9	90006-ZF5-V00	SCREW, SPECIAL, 6X8 .....	2	2	-----	DAU,DCA,DFWT
10	90013-883-000	BOLT, FLANGE, 6X12(CT200) ...	2	2	-----	DCA,DFWT
11	90029-888-000	BOLT, FLANGE, 6X16(CT200) ...	4	4	-----	
12	90320-747-000	NUT, SPRING, 6MM .....	1	1	-----	DAU,DCA,DFWT
13	91501-ZF5-V00	COLLAR, FAN COVER .....	2	2	-----	DAU,DCA,DFWT
			4	4	-----	DABG,DAEU,DAS,DA23,DA33,DETR,DET3,DE33,DNE4,DN4,DXE2,DXE4,DX2
14	94050-06000	NUT, FLANGE, 6MM .....	2	2	-----	DAU,DCA,DFWT
15	95701-06010-00	BOLT, FLANGE, 6X10 .....	1	1	-----	DAU,DCA,DFWT
16	95701-08020-08	BOLT, FLANGE, 8X20 .....	2	2	-----	DABG,DA23,DA33,DN4,DX2
17	90201-ZM0-000	NUT, FLANGE, 6MM .....	4	4	-----	DETR
18	94103-06700	WASHER, PLAIN, 6MM .....	4	4	-----	DETR





Ref. No.	L.O.N.	(Relative ref. Number) Description	F.R.T.
1	3111B1	GASKET SET, CARBURETOR (3)	0.3
2	3111E1	VALVE SET, FLOAT AND/OR FLOAT SET	0.3
4	3111A3	CHAMBER SET, FLOAT AND/OR GASKET, FLOAT CHAMBER	0.2
5	3111D7	SCREW SET, PILOT	0.2
8	3111F3	CARBURETOR (14,18)	0.2
15	3111C0	INSULATOR, CARBURETOR AND/OR PACKING, INSULATOR	0.2
16	3111D9	SPACER, CARBURETOR	0.1
17	3111C8	PACKING, CARBURETOR	0.2
22	3101C5	PACKING, FUEL COCK	0.2
23	3111G8	GUIDE, CARBURETOR AIR	0.2
26	3111C3	JET, MAIN	0.3

Ref. No.	Part No.	Description	Reqd. QTY		Serial No.	Parts catalogue code
			GXV 390 UT1	GXV 390 RT1		
1	16010-ZE2-015	GASKET SET (EXCEPT 16173-001-004)	1	1		
2	16011-ZA0-931	VALVE SET, FLOAT	1	1		
3	16013-Z1C-003	FLOAT SET	1	1		
4	16015-ZE8-005	CHAMBER SET, FLOAT	1	1		
5	16016-ZH7-W01	SCREW SET, PILOT (CARBURETOR NO.)	1	-	BE86P A DABG,DAEU,DAS,DAU,DA23,DA33,DETR,DET3,DE33,DNE4,DN4,DXE2,DXE4,DX2	
	16016-Z1E-V21	SCREW SET (CARBURETOR NO.)	1	-	BE86R B DCA,DFWT	
			1	-	BE86P B DABG,DAEU,DAS,DAU,DA23,DA33,DETR,DET3,DE33,DNE4,DN4,DXE2,DXE4,DX2	
			-	1	BE86R C DCA,DFWT	
6	16024-ZE1-811	SCREW SET, DRAIN	1	1		
7	16028-ZE0-005	SCREW SET	1	1		
8	16100-Z1E-V21	CARBURETOR ASSY. (BE86P A)	1	-	1019651 DABG,DAEU,DAS,DAU,DA23,DA33,DETR,DET3,DE33,DNE4,DN4,DXE2,DXE4,DX2	
	16100-Z1E-V42	CARBURETOR ASSY. (BE86R B)	1	-	1020560 DCA,DFWT	
	16100-Z1E-V22	CARBURETOR ASSY. (BE86P B)	1	-	1019652 DABG,DAEU,DAS,DAU,DA23,DA33,DETR,DET3,DE33,DNE4,DN4,DXE2,DXE4,DX2	
			-	1	DAEU,DAS,DAU,DA23,DA33,DETR	
	16100-Z1E-V43	CARBURETOR ASSY. (BE86R C)	1	-	1020561 DCA,DFWT	
			-	1	DAEU,DAS,DAU,DA23,DA33,DETR	
9	16124-ZE0-005	SCREW, THROTTLE STOP	1	1		
10	16148-141-881	CAP, CHOKE DUST	1	1		
11	16166-ZF5-V20	NOZZLE, MAIN (CARBURETOR NO.)	1	-	BE86P A DABG,DAEU,DAS,DAU,DA23,DA33,DETR,DET3,DE33,DNE4,DN4,DXE2,DXE4,DX2	
			1	-	BE86R B DCA,DFWT	



Ref. No.	Part No.	Description	Reqd. QTY		Serial No.	Parts catalogue code
			GXV 390 UT1	GXV 390 RT1		
11)	16166-Z1E-V21	NOZZLE, MAIN (CARBURETOR NO.) //	1 -	- 1	BE86P B BE86R C	DABG,DAEU,DAS,DAU,DA23,DA33,DETR,DET3,DE33,DNE4,DN4,DXE2,DXE4,DX2 DCA,DFWT
12	16172-ZE3-W10	COLLAR, SETTING	1	1		
13	16199-ZE8-000 95001-45180-30	TUBE, AIR VENT (75MM) TUBE, FUEL, 4.5X180 (95001-45001-60M)	1	1		DABG,DAEU,DAS,DAU,DA23,DA33,DETR,DET3,DE33,DNE4,DN4,DXE2,DXE4,DX2
	91424-Z4K-801	TUBE, FUEL, 4.5X180(FKM)	1	-	1008241 1008242	DCA,DFWT DCA,DFWT
			-	1		DCA,DFWT
14	16211-ZF5-L00	INSULATOR, CARBURETOR	1	1		DCA,DFWT
15	16211-Z1E-000	INSULATOR, CARBURETOR	1	1		DABG,DAEU,DAS,DAU,DA23,DA33,DETR,DET3,DE33,DNE4,DN4,DXE2,DXE4,DX2
16	16220-ZA0-702	SPACER COMP., CARBURETOR	1	1		
17	16221-ZF6-800	PACKING, CARBURETOR	1	1		DABG,DAEU,DAS,DAU,DA23,DA33,DETR,DET3,DE33,DNE4,DN4,DXE2,DXE4,DX2
			2	2		DCA,DFWT
18	16223-ZE9-800	PACKING, INSULATOR	1	1		
19	16953-ZE1-712	LEVER, COCK	1	1		
20	16954-ZE1-812	PLATE, LEVER SETTING	1	1		
21	16956-ZE1-811	SPRING, COCK LEVER	1	1		
22	16957-ZE1-812	PACKING, FUEL COCK	1	1		
23	19651-ZF5-L00	GUIDE, AIR	1	1		DCA,DFWT
24	93500-03006-1H	SCREW, PAN, 3X6	2	2		
25	95002-02080	CLIP, TUBE (B8)	1	1		DABG,DAEU,DAS,DAU,DA23,DA33,DETR,DET3,DE33,DNE4,DN4,DXE2,DXE4,DX2
			1	-	1008241	DCA,DFWT
26	99101-ZH8-0880	JET, MAIN, #88 (CARBURETOR NO.) //	(1) (1)	- -	BE86P A BE86R B	DABG,DAEU,DAS,DAU,DA23,DA33,DETR,DET3,DE33,DNE4,DN4,DXE2,DXE4,DX2 DCA,DFWT
			-	(1)		
	99101-ZH8-0900	JET, MAIN, #90	(1)	(1)		
	99101-ZH8-0920	JET, MAIN, #92 (CARBURETOR NO.) // // //	1 1 (1)	- - -	BE86P A BE86R B BE86P B BE86R C	DABG,DAEU,DAS,DAU,DA23,DA33,DETR,DET3,DE33,DNE4,DN4,DXE2,DXE4,DX2 DCA,DFWT DABG,DAEU,DAS,DAU,DA23,DA33,DETR,DET3,DE33,DNE4,DN4,DXE2,DXE4,DX2 DCA,DFWT
	99101-ZH8-0950	JET, MAIN, #95 (CARBURETOR NO.) //	1 1 -	- - 1	BE86P B BE86R C	DABG,DAEU,DAS,DAU,DA23,DA33,DETR,DET3,DE33,DNE4,DN4,DXE2,DXE4,DX2 DCA,DFWT
27	99204-ZE2-0400	JET SET, PILOT, #40	1	1		
28	95002-40800-08	CLAMP, TUBE (D8)	1	-	1008242	DCA,DFWT
			-	1		DCA,DFWT

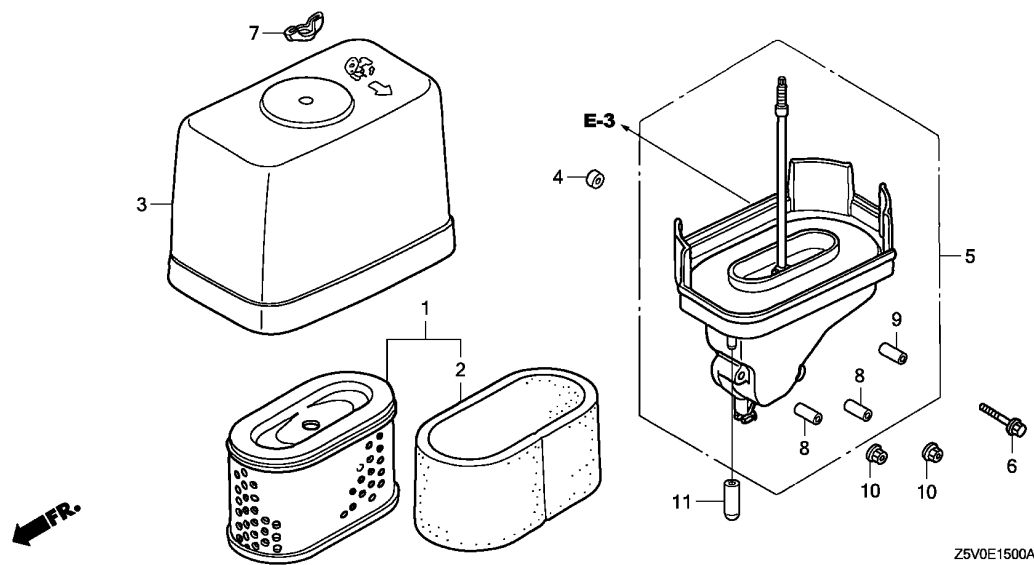




# E-15

# AIR CLEANER

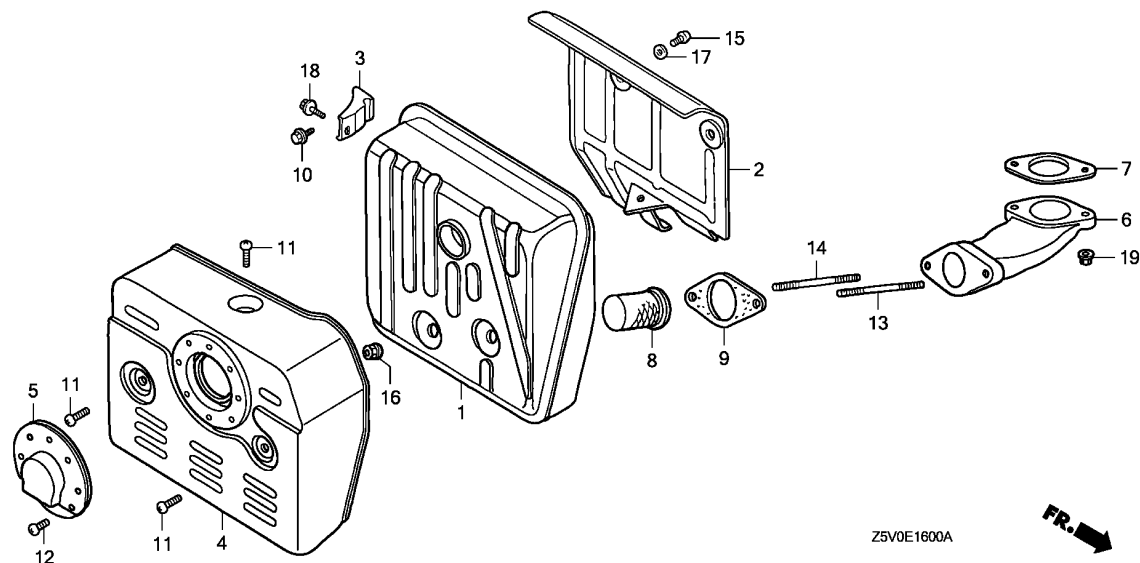
**C15**



Ref. No.	L.O.N.	(Relative ref. Number) Description	F.R.T.
1	3121B8	ELEMENT, AIR CLEANER .....	0.1
2	3121C1	FILTER, OUTER .....	0.1
5	3121B4	ELBOW, AIR CLEANER .....	0.1

Ref. No.	Part No.	Description	Reqd. QTY		Serial No.	Parts catalogue code
			GXV 390 UT1	GXV 390 RT1		
1	17211-ZF5-V01	ELEMENT, AIR CLEANER .....	1	-		
	17210-Z1E-801	ELEMENT COMP., AIR CLEANER ..	-	1		
2	17218-ZF5-V00	FILTER, OUTER .....	1	-		
3	17231-ZF5-V00	COVER, AIR CLEANER .....	1	1		
4	17239-ZE8-700	SPACER, AIR CLEANER ELBOW ...	1	1	----- DCA,DFWT	
5	17410-ZF5-V00	ELBOW COMP., AIR CLEANER ....	1	-		
	17410-Z5V-000	.....	-	1		
6	90014-ZE6-000	BOLT, FLANGE, 6X35(CT200) ...	1	1	----- DABG,DAEU,DAS,DAU,DA23,DA33,DETR,DET3,DE33,DNE4,DN4,DXE2,DXE4,DX2	
	90016-ZE8-000	BOLT, FLANGE, 6X45(CT200) ...	1	1	----- DCA,DFWT	
7	90325-044-000	NUT, TOOL BOX SETTING .....	1	1		
8	91502-ZF5-V00	COLLAR, AIR CLEANER .....	2	2		
9	91503-ZF5-V00	COLLAR, AIR CLEANER .....	1	1		
10	94050-06000	NUT, FLANGE, 6MM .....	2	2		
11	90634-ZL8-H00	CAP, SEALING .....	1	-	----- DAEU,DAS,DAU,DA23,DA33,DCA,DETR,DFWT	
			-	1		

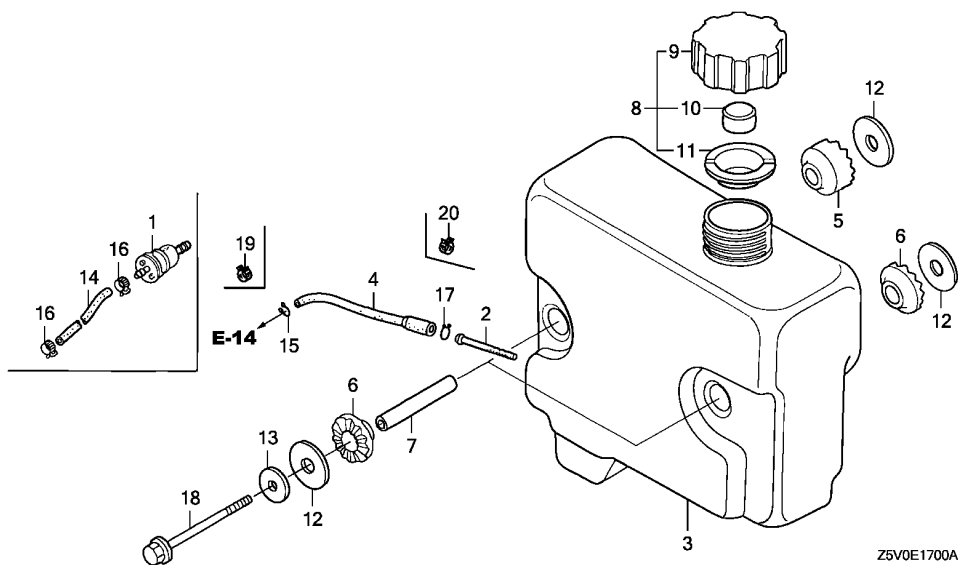
**2**



Ref. No.	L.O.N.	(Relative ref. Number) Description	F.R.T.
1	3131C5	MUFFLER, EXHAUST .....	0.3
4	3131D6	PROTECTOR, EXHAUST MUFFLER ...	0.1
6	3131C9	PIPE, EXHAUST .....	0.3
7		(9)	
	3131B5	GASKET, EXHAUST PIPE .....	0.2
8	3131A1	ARRESTER, SPARK .....	0.2

Ref. No.	Part No.	Description	Reqd. QTY		Serial No.	Parts catalogue code
			GXV 390 UT1	GXV 390 RT1		
1	18310-Z1E-000	MUFFLER COMP. ....	1	1	-----	DABG,DAEU,DAS,DAU,DA23,DA33,DETR,DET3,DE33,DNE4,DN4,DXE2,DXE4,DX2
2	18316-ZF5-V00	SEPARATOR, MUFFLER .....	1	1	-----	DABG,DAEU,DAS,DAU,DA23,DA33,DETR,DET3,DE33,DNE4,DN4,DXE2,DXE4,DX2
3	18318-ZE8-000	STAY COMP., MUFFLER .....	1	1	-----	DABG,DAEU,DAS,DAU,DA23,DA33,DETR,DET3,DE33,DNE4,DN4,DXE2,DXE4,DX2
4	18321-ZF5-000	PROTECTOR, MUFFLER .....	1	1	-----	DABG,DAEU,DAS,DAU,DA23,DA33,DETR,DET3,DE33,DNE4,DN4,DXE2,DXE4,DX2
5	18331-ZE2-810	CAP, MUFFLER .....	1	1	-----	DABG,DAEU,DAS,DAU,DA23,DA33,DETR,DET3,DE33,DXE2,DXE4,DX2
6	18331-ZF5-000 18331-Z1E-000	PIPE, EX. ....	1	1	----- 1014216	DABG,DAEU,DAS,DAU,DA23,DA33,DCA,DETR,DET3,DE33,DNE4,DN4,DXE2,DXE4,DX2 DFWT
7	18333-ZE3-800	GASKET, EX. PIPE .....	1	1	----- 1014216	DABG,DAEU,DAS,DAU,DA23,DA33,DCA,DETR,DET3,DE33,DNE4,DN4,DXE2,DXE4,DX2 DFWT
8	18333-Z1C-801 18335-ZE8-000	ARRESTER, SPARK .....	1	1	-----	DAEU,DAS,DAU,DA23,DA33,DCA,DETR DXE2,DXE4,DX2
9	18382-ZE9-800 18382-Z1F-801	GASKET, EX. PIPE .....	1	1	-----	DABG,DAEU,DAS,DAU,DA23,DA33,DETR,DET3,DE33,DNE4,DN4,DXE2,DXE4,DX2
10	90031-883-000	BOLT, FLANGE, 8X16 .....	1	1	-----	DAEU,DAS,DAU,DA23,DA33,DETR DABG,DAEU,DAS,DAU,DA23,DA33,DETR,DET3,DE33,DNE4,DN4,DXE2,DXE4,DX2
11	90050-ZE1-000	SCREW, TAPPING, 5X8 .....	3	3	-----	DABG,DAEU,DAS,DAU,DA23,DA33,DETR,DET3,DE33,DNE4,DN4,DXE2,DXE4,DX2
12	90055-ZE1-000	SCREW, TAPPING, 4X6 .....	3	3	-----	DABG,DAEU,DAS,DAU,DA23,DA33,DETR,DET3,DE33,DXE2,DXE4,DX2
13	92900-08060-1B	BOLT, STUD, 8X60 .....	1	1	-----	DABG,DAEU,DAS,DAU,DA23,DA33,DETR,DET3,DE33,DNE4,DN4,DXE2,DXE4,DX2
14	92900-08070-1B	BOLT, STUD, 8X70 .....	1	1	-----	DABG,DAEU,DAS,DAU,DA23,DA33,DETR,DET3,DE33,DNE4,DN4,DXE2,DXE4,DX2
15	93500-06006-0A	SCREW, PAN, 6X6 .....	3	3	-----	DABG,DAEU,DAS,DAU,DA23,DA33,DETR,DET3,DE33,DNE4,DN4,DXE2,DXE4,DX2
16	94050-08000	NUT, FLANGE, 8MM .....	2	2	-----	DABG,DAEU,DAS,DAU,DA23,DA33,DETR,DET3,DE33,DNE4,DN4,DXE2,DXE4,DX2
17	94101-06000	WASHER, PLAIN, 6MM .....	3	3	-----	DABG,DAEU,DAS,DAU,DA23,DA33,DETR,DET3,DE33,DNE4,DN4,DXE2,DXE4,DX2
18	95701-08014-00	BOLT, FLANGE, 8X14 .....	1	1	-----	DABG,DAEU,DAS,DAU,DA23,DA33,DETR,DET3,DE33,DNE4,DN4,DXE2,DXE4,DX2
19	94050-08000	NUT, FLANGE, 8MM .....	2	2	----- 1014216	DABG,DAEU,DAS,DAU,DA23,DA33,DCA,DETR,DET3,DE33,DNE4,DN4,DXE2,DXE4,DX2 DFWT

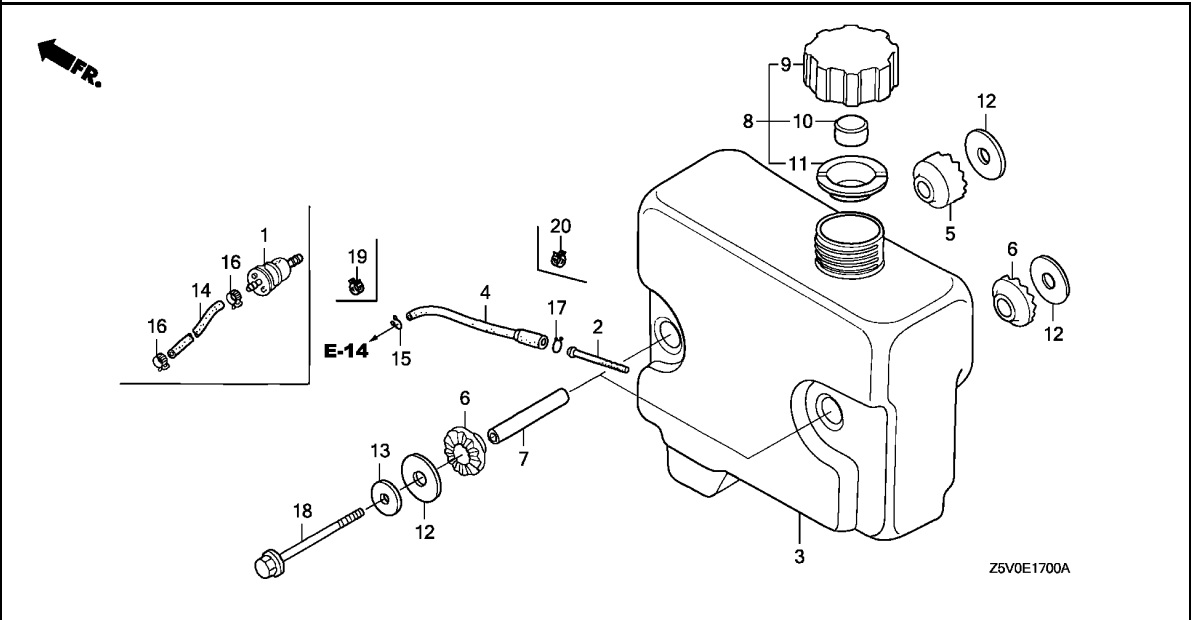




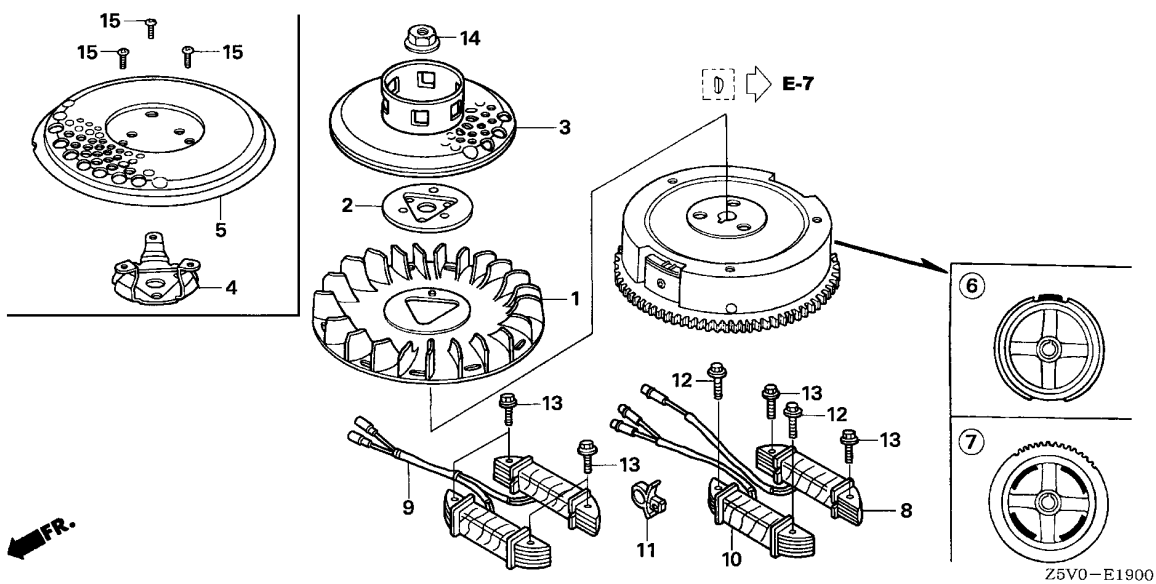
Ref. No.	L.O.N.	(Relative ref. Number) Description	F.R.T.
1	3101H8	STRAINER, FUEL .....	0.1
2	3101H6	JOINT, FUEL STRAINER .....	0.2
3	3101H7	TANK, FUEL .....	0.2
4	3101F1	TUBE, FUEL TANK .....	0.2
5		(6)	
	3101D1	RUBBER, TANK MOUNTING .....	0.2
14	3101B1	HOSE, FUEL .....	0.2

Z5V0E1700A

Ref. No.	Part No.	Description	Reqd. QTY		Serial No.	Parts catalogue code
			GXV 390 UT1	GXV 390 RT1		
1	16910-ZE8-015	STRAINER COMP., FUEL .....	1	1	-----	DAEU, DAS, DAU, DA23, DA33, DCA, DFWT
2	16952-ZE6-000	STRAINER, FUEL .....	1	-	-----	DABG, DET3, DE33, DNE4, DN4, DXE2, DXE4, DX2
3	17510-ZE9-000	TANK, FUEL .....	1	-	1019651	DABG, DET3, DE33, DNE4, DN4, DXE2, DXE4, DX2
	17511-Z5N-000	.....	1	-	1019652	DABG, DET3, DE33, DNE4, DN4, DXE2, DXE4, DX2
4	17512-ZE9-000	TUBE, FUEL .....	1	-	1003217	DABG, DET3, DE33, DNE4, DN4, DXE2, DXE4, DX2
	17512-Z5N-003	TUBE, FUEL (FKM) .....	1	-	1003218	DABG, DET3, DE33, DNE4, DN4, DXE2, DXE4, DX2
5	17516-ZE8-000	RUBBER B, TANK MOUNTING .....	1	-	-----	DABG, DET3, DE33, DNE4, DN4, DXE2, DXE4, DX2
6	17516-896-700	RUBBER B, TANK MOUNTING .....	3	-	-----	DABG, DET3, DE33, DNE4, DN4, DXE2, DXE4, DX2
7	17518-ZE8-000	COLLAR, TANK SETTING .....	2	-	-----	DABG, DET3, DE33, DNE4, DN4, DXE2, DXE4, DX2
8	17620-ZE7-000	CAP ASSY., FUEL TANK .....	1	-	-----	DABG, DET3, DE33, DNE4, DN4, DXE2, DXE4, DX2
9	17621-ZE6-000	BODY, FUEL CAP .....	1	-	-----	DABG, DET3, DE33, DNE4, DN4, DXE2, DXE4, DX2
10	17622-888-010	SPONGE, FUEL CAP BREATHER ...	1	-	-----	DABG, DET3, DE33, DNE4, DN4, DXE2, DXE4, DX2
11	17624-ZE7-000	PACKING, FUEL CAP .....	1	-	-----	DABG, DET3, DE33, DNE4, DN4, DXE2, DXE4, DX2
12	90455-896-700	WASHER, TANK MOUNTING .....	4	-	-----	DABG, DET3, DE33, DNE4, DN4, DXE2, DXE4, DX2
13	90471-SB0-000	WASHER, PLAIN, 8MM .....	2	-	-----	DABG, DET3, DE33, DNE4, DN4, DXE2, DXE4, DX2
14	95001-45230-50	HOSE, FUEL, 4.5X230 .....	1	-	-----	DAS
	(95001-45001-50M)	.....	1	-	-----	DAS
	95001-45360-20	HOSE, FUEL, 4.5X360 .....	1	-	-----	DAS
	(95001-45001-50M)	.....	1	-	1003505	DAEU, DAU, DA23, DA33, DCA, DFWT
	91434-Z5N-811	HOSE, FUEL, 4.5X360(FKM) ....	1	-	1003506	DAEU, DAU, DA23, DA33, DCA, DFWT
	91434-Z5P-801	HOSE, FUEL, 4.5X230(FKM) ....	-	1	-----	DAEU, DAU, DA23, DA33, DCA, DFWT
	95001-45150-40	TUBE, FUEL, 4.5X150 .....	-	1	-----	DAS
	(95001-45001-60M)	.....	1	-	1003721	DETR
	91424-Z4J-801	TUBE, FUEL, 4.5X150(FKM) ....	1	-	1003722	DETR
		.....	-	1	-----	DETR
15	95002-02080	CLIP, TUBE (B8) .....	1	-	1003217	DABG, DET3, DE33, DNE4, DN4, DXE2, DXE4, DX2



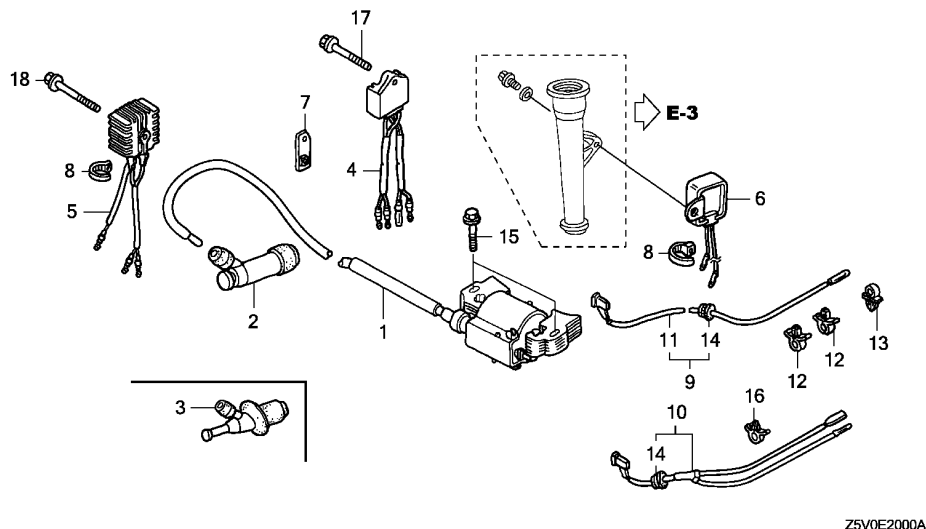
Ref. No.	Part No.	Description	Reqd. QTY		Serial No.	Parts catalogue code
			GXV 390 UT1	GXV 390 RT1		
16	95002-40850-08	CLAMP, TUBE (D8.5)	2	2	-----	DAEU,DAS,DAU,DA23,DA33,DCA,DFWT
	95002-40800-08	CLAMP, TUBE (D8)	2	2	-----	DETR
17	95002-70000	CLIP, TUBE (C11)	1	-	1003217	DABG,DET3,DE33,DNE4,DN4,DXE2,DXE4,DX2
18	95701-08095-00	BOLT, FLANGE, 8X95	2	-	-----	DABG,DET3,DE33,DNE4,DN4,DXE2,DXE4,DX2
19	95002-40800-08	CLAMP, TUBE (D8)	1	-	1003218	DABG,DET3,DE33,DNE4,DN4,DXE2,DXE4,DX2
20	95002-41050-08	CLAMP, TUBE (D10.5)	1	-	1003218	DABG,DET3,DE33,DNE4,DN4,DXE2,DXE4,DX2



Ref. No.	L.O.N.	(Relative ref. Number) Description	F.R.T.
1	1141G7	FAN, ENGINE COOLING .....	0.2
3	1121A9	PULLEY, RECOIL STARTER .....	0.2
5	6201A5	GRID, SCREEN .....	0.2
6		(7)	
	2161B5	FLYWHEEL .....	0.3
8	6141A6	COIL, LAMP .....	0.4
9		(10)	
	6131C3	COIL, CHARGE .....	0.4

2

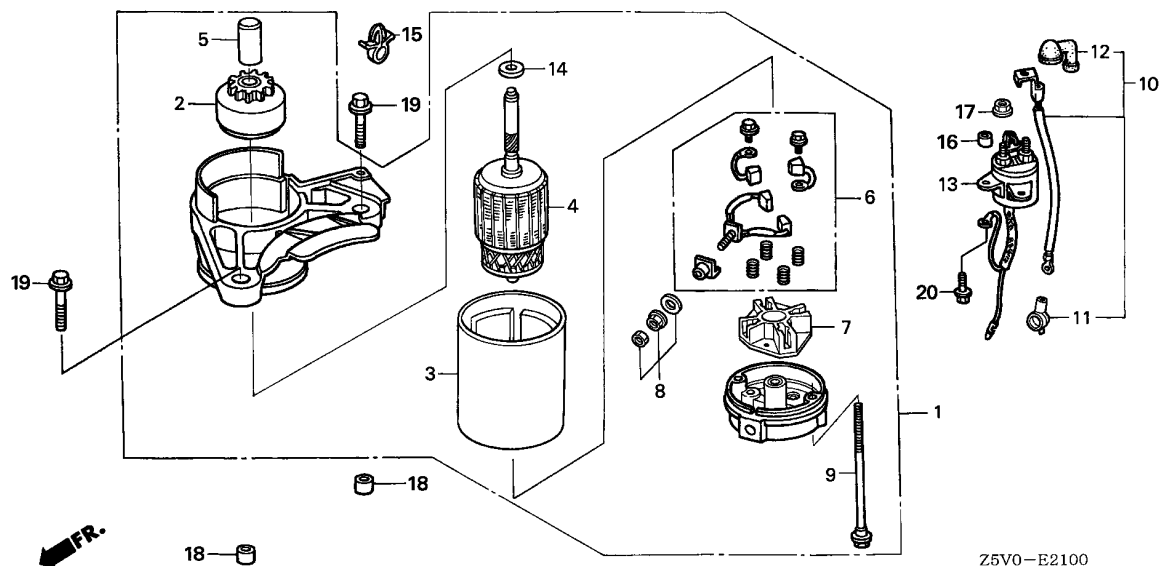
Ref. No.	Part No.	Description	Reqd. QTY		Serial No.	Parts catalogue code
			GXV 390 UT1	GXV 390 RT1		
1	19511-ZE9-010	FAN, COOLING .....	1	1		
2	19512-ZE2-000	PLATE, COOLING FAN SETTING ..	1	1		DCA,DFWT
3	28450-ZE9-004	PULLEY COMP., STARTER (SCREEN GRID)	1	1		DABG,DAEU,DAS,DA23,DA33,DET3,DE33,DNE4,DN4,DXE2,DXE4,DX2
4	28451-ZE9-801	HOLDER, SCREEN GRID .....	1	1		DAU,DETR
5	28452-ZE8-801	GRID, SCREEN .....	1	1		DAU,DETR
6	31100-ZE9-020	FLYWHEEL COMP. ....	1	1		DABG,DA23,DA33,DN4,DX2
7	31110-ZF5-L32	FLYWHEEL COMP. (SEL-4POLE) ..	1	1		DAEU,DAS,DAU,DCA,DETR,DET3,DE33,DFWT,DNE4,DXE2,DXE4
8	31510-ZF5-811	COIL ASSY., LAMP (12V70W) ...	1	-		DXE2,DXE4
9	31630-ZF5-V01	COIL ASSY., CHARGE (10A) ....	1	1		DCA,DETR,DFWT
10	31630-ZF5-003	COIL ASSY., CHARGE .....	1	1		DAEU,DAS,DAU,DET3,DE33
	31630-ZF5-801	COIL ASSY., CHARGE (1A) ....	1	-		DNE4,DXE2,DXE4
11	46391-VM0-003	CLIP, BRAKE PIPE (A) .....	1	1		DAEU,DAS,DAU,DET3,DE33,DNE4,DXE2,DXE4
12	90015-883-000	BOLT, FLANGE, 6X28 .....	2	2		DAEU,DAS,DAU,DET3,DE33,DNE4,DXE2,DXE4
13	90031-ZE1-000	BOLT, FLANGE, 6X32 .....	2	-		DXE2,DXE4
			4	4		DCA,DETR,DFWT
14	90201-ZE3-V00	NUT, SPECIAL, 16MM .....	1	-		
15	93500-05008-0A	SCREW, PAN, 5X8 .....	3	3		DAU,DETR



Ref. No.	L.O.N.	(Relative ref. Number) Description	F.R.T.
1	6141A5	COIL, IGNITION(ONE) .....	0.3
2		(3)	
	6141B8	TERMINAL, HIGH TENSION .....	0.1
4	6131B7	RECTIFIER, REGULATOR .....	0.2
5	6131B8	RECTIFIER, SILICON .....	0.2
9		(10)	
	6111B3	CORD, STOP SWITCH .....	0.2

Ref. No.	Part No.	Description	Reqd. QTY		Serial No.	Parts catalogue code
			GXV 390 UT1	GXV 390 RT1		
1	30500-Z1E-013	COIL ASSY., IGNITION .....	1	-		
	30500-Z1E-023	.....	-	1		
2	30700-ZF5-013	CAP ASSY., NOISE SUPPRESSOR .....	1	1	-----	DABG,DAEU,DAS,DAU,DA23,DA33,DETR,DET3,DE33,DNE4,DN4,DXE2,DXE4,DX2
3	30700-Z1F-811	CAP ASSY., NOISE SUPPRESSOR .....	1	1	-----	DCA,DFWT
4	31620-881-A02	RECTIFIER ASSY., REGULATOR ..	1	1	-----	DAEU
5	31700-ZE8-003	RECTIFIER ASSY., SILICON ....	1	1	-----	DAS,DAU,DET3,DE33
6	31700-ZF5-003	RECTIFIER COMP., SILICON ....	1	-	-----	DNE4,DXE2,DXE4
7	31717-ZF5-V00	BRACKET, RECTIFIER .....	1	1	-----	DAEU,DAS,DAU,DET3,DE33
8	32161-404-610	BAND B1, WIRE .....	1	1	-----	DAS,DAU,DET3,DE33,DNE4,DXE2,DXE4
9	36101-ZE8-000	CORD, STOP SWITCH .....	1	-	-----	DNE4,DN4,DXE4
10	36101-ZE8-810	CORD, STOP SWITCH .....	1	1	-----	DABG,DAEU,DAS,DAU,DA23,DA33,DETR,DET3,DE33,DXE2,DX2
11	36101-ZE9-L30	CORD, STOP SWITCH .....	1	1	-----	DCA,DFWT
12	46391-VM0-003	CLIP, BRAKE PIPE (A) .....	2	2	-----	DABG,DAEU,DAS,DAU,DA23,DA33,DETR,DET3,DE33,DNE4,DN4,DXE2,DXE4,DX2
13	51125-Z0L-003	HOLDER, WIRE (FASTEX) .....	1	1	-----	DABG,DA23,DA33,DXE2,DX2
14	80101-166-000	GROMMET, WIRE CORD .....	1	1	-----	DABG,DAEU,DAS,DAU,DA23,DA33,DETR,DET3,DE33,DNE4,DN4,DXE2,DXE4,DX2
15	90015-883-000	BOLT, FLANGE, 6X28 .....	2	2		
16	91504-SLO-003	CLIP, HOOD OPEN WIRE .....	1	1	-----	DCA,DFWT
17	95701-06025-00	BOLT, FLANGE, 6X25 .....	1	1	-----	DAEU
18	95701-06032-00	BOLT, FLANGE, 6X32 .....	1	1	-----	DAS,DAU,DET3,DE33

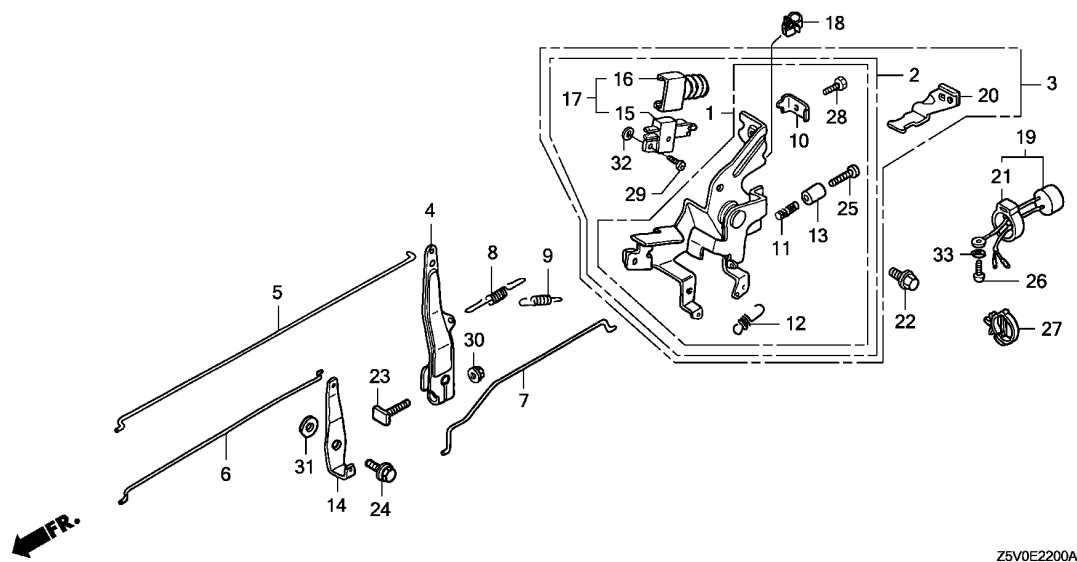




Z5V0-E2100

Ref. No.	L.O.N.	(Relative ref. Number) Description	F.R.T.
1	6121D5	MOTOR, STARTER .....	0.3
2	6121B0	CLUTCH, OVERRUNNING .....	0.4
3	6121D1	YOKE, STARTER .....	0.5
4	6121A0	ARMATURE, STARTER .....	0.5
6	6121A8	BRUSH SET, STARTER .....	0.5
10	6121D6	CORD, MAGNET SWITCH .....	0.1
13	6121C9	SWITCH, STARTER MAGNETIC .....	0.3

Ref. No.	Part No.	Description	Reqd. QTY		Serial No.	Parts catalogue code
			GXV 390 UT1	GXV 390 RT1		
1	31200-ZF5-L32	MOTOR ASSY., STARTER .....	1	1	-----	DAEU,DAS,DAU,DCA,DETR,DET3,DE33,DFWT,DNE4,DXE2,DXE4
2	31206-ZF5-L31	DRIVE ASSY. ....	1	1	-----	DAEU,DAS,DAU,DCA,DETR,DET3,DE33,DFWT,DNE4,DXE2,DXE4
3	31216-ZJ1-004	YOKE COMP. ....	1	1	-----	DAEU,DAS,DAU,DCA,DETR,DET3,DE33,DFWT,DNE4,DXE2,DXE4
4	31217-ZF5-L31	ARMATURE COMP. ....	1	1	-----	DAEU,DAS,DAU,DCA,DETR,DET3,DE33,DFWT,DNE4,DXE2,DXE4
5	31225-ZF5-L31	STOPPER SET, PINION .....	1	1	-----	DAEU,DAS,DAU,DCA,DETR,DET3,DE33,DFWT,DNE4,DXE2,DXE4
6	31226-ZF5-L31	BRUSH SET .....	1	1	-----	DAEU,DAS,DAU,DCA,DETR,DET3,DE33,DFWT,DNE4,DXE2,DXE4
7	31231-ZJ1-004	HOLDER COMP., BRUSH .....	1	1	-----	DAEU,DAS,DAU,DCA,DETR,DET3,DE33,DFWT,DNE4,DXE2,DXE4
8	31237-ZJ1-004	NUT SET, TERMINAL .....	1	1	-----	DAEU,DAS,DAU,DCA,DETR,DET3,DE33,DFWT,DNE4,DXE2,DXE4
9	31261-ZF5-L31	BOLT, THROUGH .....	2	2	-----	DAEU,DAS,DAU,DCA,DETR,DET3,DE33,DFWT,DNE4,DXE2,DXE4
10	32402-ZF5-V00	CORD, MAGNET SWITCH .....	1	1	-----	DAEU,DAS,DAU,DCA,DETR,DET3,DE33,DFWT,DNE4,DXE2,DXE4
11	32411-ZV4-811	COVER, STARTER TERMINAL .....	1	1	-----	DAEU,DAS,DAU,DCA,DETR,DET3,DE33,DFWT,DNE4,DXE2,DXE4
12	32412-ZV4-811	COVER, MAGNETIC SWITCH .....	1	1	-----	DAEU,DAS,DAU,DCA,DETR,DET3,DE33,DFWT,DNE4,DXE2,DXE4
13	35850-ZF5-V01	SWITCH ASSY., STARTER MAGNETIC .....	1	1	-----	DAEU,DAS,DAU,DCA,DETR,DET3,DE33,DFWT,DNE4,DXE2,DXE4
14	90407-ZF5-L31	WASHER, THRUST .....	1	1	-----	DAEU,DAS,DAU,DCA,DETR,DET3,DE33,DFWT,DNE4,DXE2,DXE4
15	90682-735-A01	CLIP, WIRE HARNESS .....	1	1	-----	DCA,DETR,DFWT
16	91504-ZF5-V00	COLLAR, DISTANCE .....	2	-	-----	DAEU,DAS,DAU,DCA,DETR,DET3,DE33,DFWT,DNE4,DXE2,DXE4
	91503-ZY1-300	COLLAR, 6.5X11X10 .....	-	2	-----	DAEU,DAS,DAU,DCA,DETR,DFWT
17	94070-06080	NUT-WASHER, 6MM .....	2	2	-----	DAEU,DAS,DAU,DCA,DETR,DET3,DE33,DFWT,DNE4,DXE2,DXE4
18	94301-10120	DOWEL PIN, 10X12 .....	2	2	-----	DAEU,DAS,DAU,DCA,DETR,DET3,DE33,DFWT,DNE4,DXE2,DXE4
19	95701-08035-00	BOLT, FLANGE, 8X35 .....	2	2	-----	DAEU,DAS,DAU,DCA,DETR,DET3,DE33,DFWT,DNE4,DXE2,DXE4
20	96001-06025-00	BOLT, FLANGE, 6X25 .....	2	2	-----	DAEU,DAS,DAU,DCA,DETR,DET3,DE33,DFWT,DNE4,DXE2,DXE4

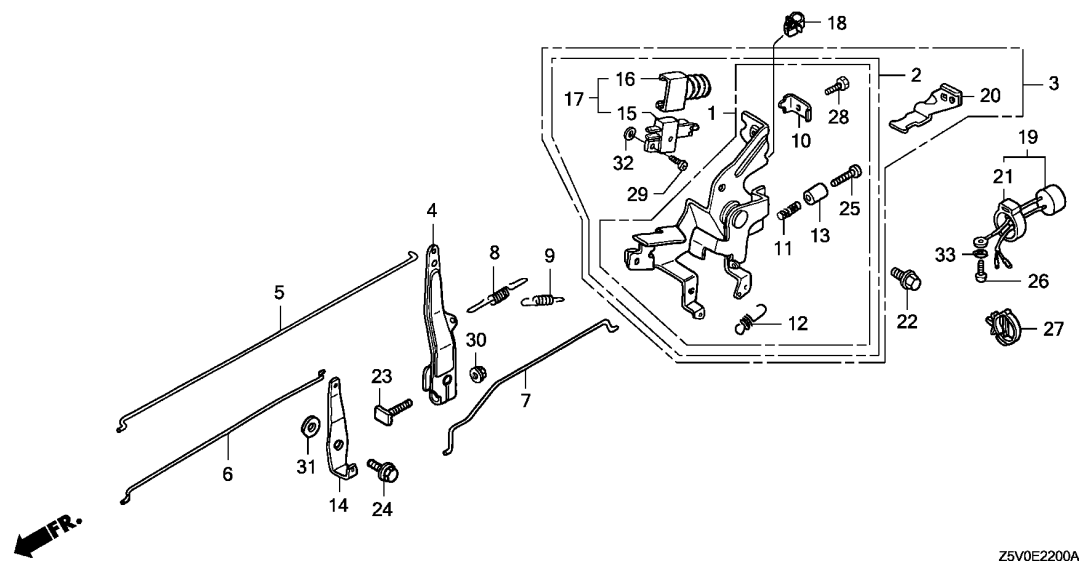


Ref. No.	L.O.N.	(Relative ref. Number) Description	F.R.T.
3		(2)	
3	1161A5	CONTROL, THROTTLE/GOVERNOR ...	0.2
4	1161A0	ARM, GOVERNOR .....	0.2
5	1161B1	ROD, GOVERNOR .....	0.2
6	8101J8	ROD, CARBURETOR CHOKE .....	0.1
7	1161B2	ROD, JOINT .....	0.1
8	1161C5	SPRING, GOVERNOR .....	0.1
17		(15)	
	6151D9	SWITCH, ENGINE STOP .....	0.2
19	6211C3	BUZZER, WARNING .....	0.2

Ref. No.	Part No.	Description	Reqd. QTY		Serial No.	Parts catalogue code
			GXV 390 UT1	GXV 390 RT1		
1	16500-ZF5-U11	CONTROL ASSY. (AYP) .....	1	1	-----	DAS,DETR
2	16500-ZF5-010	CONTROL ASSY. ....	1	1	-----	DABG,DAEU,DAU,DET3,DE33
	16500-ZF5-821	.....	1	-	-----	DNE4,DN4,DXE4
3	16500-ZF5-800	CONTROL ASSY. ....	1	1	-----	DA23,DA33,DXE2,DX2
4	16551-ZF5-000	ARM, GOVERNOR .....	1	1	-----	DABG,DAEU,DAS,DAU,DA23,DA33,DETR,DET3,DE33,DNE4,DN4,DXE2,DXE4,DX2
5	16555-ZE9-000	ROD, GOVERNOR .....	1	1	-----	DABG,DAEU,DAS,DAU,DA23,DA33,DETR,DET3,DE33,DNE4,DN4,DXE2,DXE4,DX2
6	16556-ZE9-000	ROD, CHOKE .....	1	1	-----	DABG,DAEU,DAS,DAU,DA23,DA33,DETR,DET3,DE33,DNE4,DN4,DXE2,DXE4,DX2
7	16557-ZE8-810	ROD, JOINT .....	1	1	-----	DABG,DAEU,DAS,DAU,DA23,DA33,DETR,DET3,DE33,DNE4,DN4,DXE2,DXE4,DX2
8	16561-ZF5-000	SPRING, GOVERNOR .....	1	1	-----	DABG,DAEU,DAS,DAU,DA23,DA33,DETR,DET3,DE33,DNE4,DN4,DXE2,DXE4,DX2
9	16563-ZE8-000	SPRING, GOVERNOR PRIMARY .....	1	1	-----	DABG,DAEU,DAS,DAU,DA23,DA33,DETR,DET3,DE33,DNE4,DN4,DXE2,DXE4,DX2
10	16576-891-000	HOLDER, CABLE .....	1	1	-----	DABG,DAEU,DAS,DAU,DA23,DA33,DETR,DET3,DE33,DNE4,DN4,DXE2,DXE4,DX2
11	16584-883-300	SPRING, CONTROL ADJUSTING ...	1	-	-----	DABG,DAEU,DAS,DAU,DA23,DA33,DETR,DET3,DE33,DNE4,DN4,DXE2,DXE4,DX2
12	16592-732-700	SPRING, CABLE RETURN .....	1	1	-----	DABG,DAEU,DAS,DAU,DA23,DA33,DETR,DET3,DE33,DNE4,DN4,DXE2,DXE4,DX2
13	16599-ZG1-M10	COLLAR, STOPPER .....	1	-	-----	DNE4,DN4,DXE4
14	16619-ZF5-000	LEVER, CHOKE JOINT .....	1	1	-----	DABG,DAEU,DAS,DAU,DA23,DA33,DETR,DET3,DE33,DNE4,DN4,DXE2,DXE4,DX2
15	35330-ZG1-751	SWITCH ASSY., ENGINE .....	1	1	-----	DABG,DAEU,DAU,DA23,DA33,DET3,DE33,DNE4,DN4,DXE2,DXE4,DX2
16	35336-750-003	COVER, SWITCH .....	1	1	-----	DABG,DAEU,DAU,DA23,DA33,DET3,DE33,DNE4,DN4,DXE2,DXE4,DX2
17	36100-ZE8-003	SWITCH ASSY., ENGINE STOP ...	1	1	-----	DABG,DAEU,DAU,DA23,DA33,DET3,DE33,DNE4,DN4,DXE2,DXE4,DX2
18	36103-ZE1-000	HOLDER, STOP SWITCH CORD ....	1	1	-----	DABG,DA23,DA33,DXE2,DX2
19	38400-ZE8-003	BUZZER ASSY. ....	1	1	-----	DA23,DA33,DXE2,DX2
20	38401-ZF5-800	STAY, BUZZER .....	1	1	-----	DA23,DA33,DXE2,DX2
21	38402-GC1-000	SUSPENSION, AUDIBLE PILOT ...	1	1	-----	DA23,DA33,DXE2,DX2
22	90013-883-000	BOLT, FLANGE, 6X12(CT200) ...	1	1	-----	DABG,DAEU,DAS,DAU,DA23,DA33,DETR,DET3,DE33,DNE4,DN4,DXE2,DXE4,DX2
23	90015-ZE5-010	BOLT, GOVERNOR ARM .....	1	1	-----	DABG,DAEU,DAS,DAU,DA23,DA33,DETR,DET3,DE33,DNE4,DN4,DXE2,DXE4,DX2
24	90015-ZE8-000	BOLT, FLANGE, 6MM .....	1	1	-----	DABG,DAEU,DAS,DAU,DA23,DA33,DETR,DET3,DE33,DNE4,DN4,DXE2,DXE4,DX2







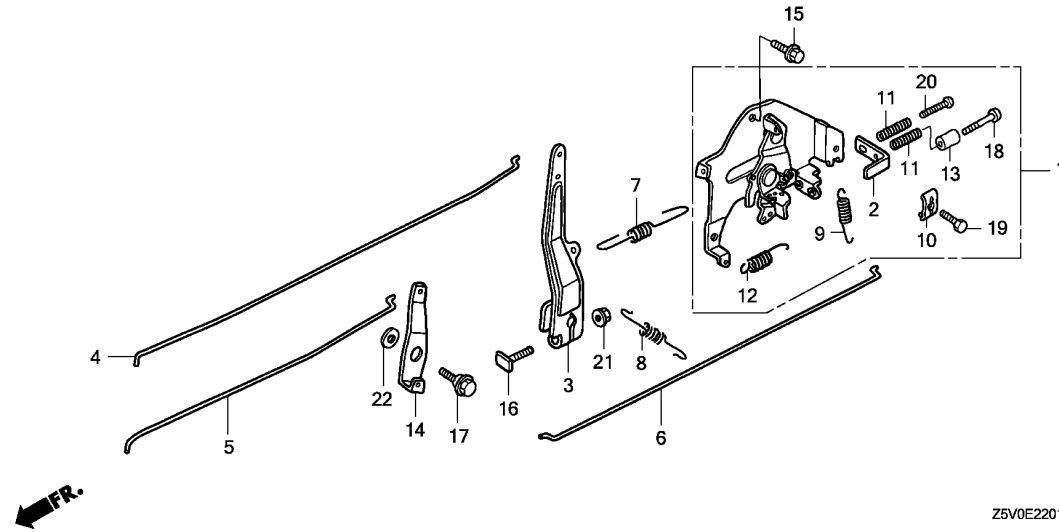
Z5V0E2200A

Ref. No.	Part No.	Description	Reqd. QTY		Serial No.	Parts catalogue code
			GXV 390 UT1	GXV 390 RT1		
25	90016-ZF5-W40	SCREW, RECESSED, 5X20	1	-	-----	DNE4, DN4, DXE4
	93500-05020-0A	SCREW, PAN, 5X20	1	1	-----	DABG, DAEU, DAS, DAU, DA23, DA33, DETR, DET3, DE33, DXE2, DX2
26	90050-ZE1-000	SCREW, TAPPING, 5X8	1	1	-----	DA23, DA33, DXE2, DX2
27	90684-ZA0-601	CLIP, HARNESS	1	1	-----	DA23, DA33, DXE2, DX2
28	92301-05014-1A	BOLT, RECESSED, 5X14	1	1	-----	DABG, DAEU, DAS, DAU, DETR, DET3, DE33, DNE4, DN4, DXE4
	92301-05016-0A	BOLT, RECESSED, 5X16	1	1	-----	DA23, DA33, DXE2, DX2
29	93500-04014-0A	SCREW, PAN, 4X14	1	1	-----	DABG, DAEU, DAU, DA23, DA33, DET3, DE33, DNE4, DN4, DXE2, DXE4, DX2
30	94050-06000	NUT, FLANGE, 6MM	1	1	-----	DABG, DAEU, DAS, DAU, DA23, DA33, DETR, DET3, DE33, DNE4, DN4, DXE2, DXE4, DX2
31	94101-06800	WASHER, PLAIN, 6MM	1	1	-----	DABG, DAEU, DAS, DAU, DA23, DA33, DETR, DET3, DE33, DNE4, DN4, DXE2, DXE4, DX2
32	94111-04000	WASHER, SPRING, 4MM	1	1	-----	DABG, DAEU, DAU, DA23, DA33, DET3, DE33, DNE4, DN4, DXE2, DXE4, DX2
33	94111-05000	WASHER, SPRING, 5MM	1	1	-----	DA23, DA33, DXE2, DX2

E-22-1

CONTROL(2)

D 8

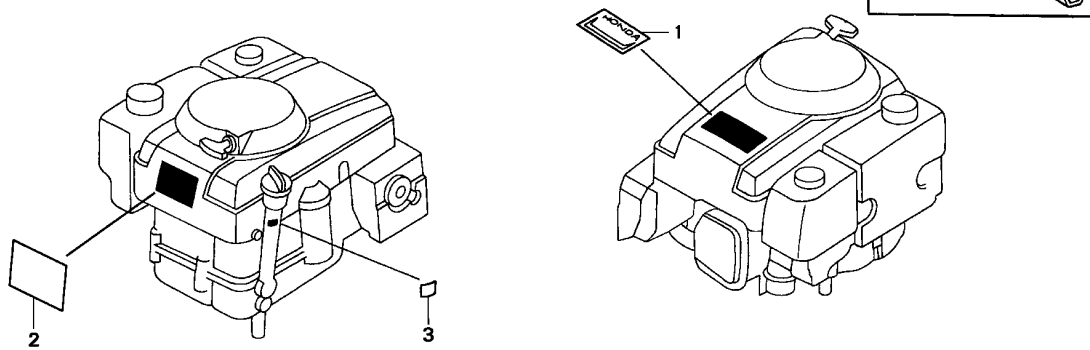


Z5V0E2201A

Ref. No.	L.O.N.	(Relative ref. Number) Description	F.R.T.
1	1161A5	CONTROL, THROTTLE/GOVERNOR ...	0.2
3	1161A0	ARM, GOVERNOR .....	0.2
4	1161B1	ROD, GOVERNOR .....	0.2
5	8101AF	ROD, CARBURETOR CHOKE(A) .....	0.2
6	1161F2	ROD, JOINT(A) .....	0.2
7	1161D4	SPRING, GOVERNOR(A) .....	0.2
8	1161B9	SPRING, GOVERNOR PRIMARY .....	0.1
9	1161C0	SPRING, LEVER .....	0.1
12	1161B7	SPRING, CABLE RETURN .....	0.1

Ref. No.	Part No.	Description	Reqd. QTY		Serial No.	Parts catalogue code
			GXV 390 UT1	GXV 390 RT1		
1	16500-ZF5-U20	CONTROL ASSY. ....	1	1	-----	DCA,DFWT
2	16539-ZF5-L40	PLATE, SCREW ADJUST GUARD ...	1	1	-----	DCA,DFWT
3	16551-ZF5-000	ARM, GOVERNOR .....	1	1	-----	DCA,DFWT
4	16555-ZE9-000	ROD, GOVERNOR .....	1	1	-----	DCA,DFWT
5	16556-ZE9-000	ROD, CHOKE .....	1	1	-----	DCA,DFWT
6	16557-ZE8-000	ROD, JOINT .....	1	1	-----	DCA,DFWT
7	16561-ZF5-000	SPRING, GOVERNOR .....	1	1	-----	DCA,DFWT
8	16563-ZE8-000	SPRING, GOVERNOR PRIMARY ...	1	1	-----	DCA,DFWT
9	16574-ZF5-L00	SPRING, LEVER .....	1	1	-----	DCA,DFWT
10	16576-891-000	HOLDER, CABLE .....	1	1	-----	DCA,DFWT
11	16584-883-300	SPRING, CONTROL ADJUSTING ...	2	2	-----	DCA,DFWT
12	16592-732-700	SPRING, CABLE RETURN .....	1	1	-----	DCA,DFWT
13	16599-ZG1-M10	COLLAR, STOPPER .....	1	1	-----	DCA,DFWT
14	16619-ZF5-000	LEVER, CHOKE JOINT .....	1	1	-----	DCA,DFWT
15	90013-883-000	BOLT, FLANGE, 6X12(CT200) ...	1	1	-----	DCA,DFWT
16	90015-ZE5-010	BOLT, GOVERNOR ARM .....	1	1	-----	DCA,DFWT
17	90015-ZE8-000	BOLT, FLANGE, 6MM .....	1	1	-----	DCA,DFWT
18	90016-ZG1-M10	SCREW, RECESSED, 5X35 .....	1	1	-----	DCA,DFWT
19	92301-05016-0A	BOLT, RECESSED, 5X16 .....	1	1	-----	DCA,DFWT
20	92301-05022-0A	BOLT, RECESSED, 5X22 .....	1	1	-----	DCA,DFWT
21	94050-06000	NUT, FLANGE, 6MM .....	1	1	-----	DCA,DFWT
22	94101-06800	WASHER, PLAIN, 6MM .....	1	1	-----	DCA,DFWT

2

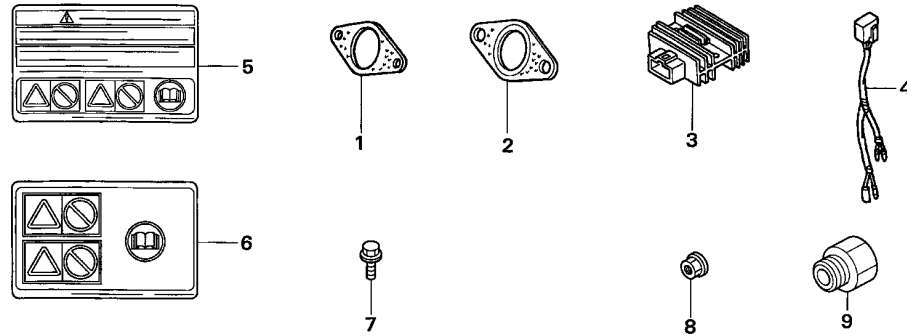


Z5V0-E2800

Ref. No.	L.O.N.	(Relative ref. Number) Description	F.R.T.
----------	--------	------------------------------------	--------

NO INFORMATION .....

Ref. No.	Part No.	Description	Reqd. QTY		Serial No.	Parts catalogue code
			GXV 390 UT1	GXV 390 RT1		
1	87101-ZF5-V01	EMBLEM, TOP COVER (13.0) ....	1	-	-----	DABG,DAEU,DAS,DAU,DA23,DA33,DCA,DET3,DE33,DFWT,DNE4,DN4,DXE2,DXE4,DX2
	87101-ZF5-V02	EMBLEM, TOP COVER (GXV390) ..	-	1	-----	DAEU,DAS,DAU,DA23,DA33,DCA,DFWT
2	87516-Z4H-000	MARK, OPERATOR CAUTION (ENGLISH)(MADE IN THAI)	1	-	-----	DAEU,DAS,DAU,DA23,DA33,DCA,DETR,DET3,DE33,DFWT,DNE4,DN4,DXE2,DXE4,DX2
			-	1	-----	
	87516-Z4H-810	MARK, OPERATOR CAUTION (PICTOGRAPH)(MADE IN THAI)	(1)	-	-----	DAEU,DAS,DAU,DA23,DA33,DCA,DETR,DET3,DE33,DFWT,DNE4,DN4,DXE2,DXE4,DX2
			-	(1)	-----	
3	87601-ZF5-T10	MARK, TYPE (DAS) .....	1	1	-----	DAS
	87601-ZF5-T20	MARK, TYPE (DABG) .....	1	-	-----	DABG
	87601-ZF5-U50	MARK, TYPE (DAEU) .....	1	1	-----	DAEU
	87601-ZF5-V50	MARK, TYPE (DX2) .....	1	-	-----	DX2
	87601-ZF5-V60	MARK, TYPE (DXE2) .....	1	-	-----	DXE2
	87601-ZF5-W00	MARK, TYPE (DA33) .....	1	1	-----	DA33
	87601-ZF5-W10	MARK, TYPE (DA23) .....	1	1	-----	DA23
	87601-ZF5-W20	MARK, TYPE (DE33) .....	1	-	-----	DE33
	87601-ZF5-W30	MARK, TYPE (DET3) .....	1	-	-----	DET3
	87601-ZF5-W40	MARK, TYPE (DN4) .....	1	-	-----	DN4
	87601-ZF5-W50	MARK, TYPE (DNE4) .....	1	-	-----	DNE4
	87601-ZF5-W60	MARK, TYPE (DXE4) .....	1	-	-----	DXE4
	87601-ZF5-800	MARK, TYPE (DCA) .....	1	1	-----	DCA
	87601-ZF5-880	MARK, TYPE (DAU) .....	1	1	-----	DAU
	87601-Z1E-U80	MARK, TYPE (DFWT) .....	1	1	-----	DFWT
	87601-Z1G-T30	MARK, TYPE (DETR) .....	1	1	-----	DETR
4	99004-21002	WRENCH, BOX (P21) .....	1	1	-----	DAEU,DAS,DAU,DA23,DA33,DCA,DET3,DE33,DXE2,DXE4,DX2



Z5V0-E4000A

Ref. L.O.N. (Relative ref. Number) F.R.T.  
No. Description

NO INFORMATION .....

Ref. No.	Part No.	Description	Reqd. QTY		Serial No.	Parts catalogue code
			GXV 390 UT1	GXV 390 RT1		
1	18333-ZE3-800	GASKET, EX. PIPE .....	1	-	1014215	DFWT
2	18382-ZE9-800	GASKET, EX. PIPE .....	1	1	-----	DCA
			1	-	1014216	DFWT
			-	1	-----	DFWT
3	31600-ZE2-861	RECTIFIER ASSY., REGULATOR (10A)	1	1	-----	DCA,DETR,DFWT
4	32110-ZB5-G30	HARNESS ASSY., SUB WIRE .....	1	1	-----	DCA
5	87516-Z4H-000	MARK, OPERATOR CAUTION (ENGLISH)(MADE IN THAI)	1	-	-----	DABG
	87516-Z4H-800	MARK, OPERATOR CAUTION (FRENCH)(MADE IN THAI)	1	1	-----	
6	87516-Z4H-810	MARK, OPERATOR CAUTION (PICTOGRAPH)(MADE IN THAI)	(1)	-	-----	DABG
7	90031-883-000	BOLT, FLANGE, 8X16 .....	1	1	-----	DFWT
8	94050-08000	NUT, FLANGE, 8MM .....	2	-	1014215	DFWT
9	15641-Z1G-T30	ADAPTER, OIL DRAIN EXTENSION	1	1	-----	DETR



## PART NO. INDEX

E 2

Part Number	Address	Page	Ref.	Part Number	Address	Page	Ref.	Part Number	Address	Page	Ref.	Part Number	Address	Page	Ref.	Part Number	Address	Page	Ref.
46391-VM0-003	D4	35	12	90016-ZG1-M10	D8	39	18	92800-20000	C4	19	47	95701-08014-00	C16	31	18				
				90018-PN3-000	C3	18	34	92900-08022-0B	C1	16	16	95701-08020-08	C12	27	16				
51000				90029-888-000	C12	27	11	92900-08032-0B	C1	16	16	95701-08035-00	D5	36	19				
				90031-883-000	C16	31	10	92900-08060-1B	C16	31	13	95701-08040-08	C4	19	55				
51125-Z0L-003	D4	35	13		D10	41	7	92900-08070-1B	C16	31	14	95701-08060-08	C4	19	56				
				90031-ZE1-000	D3	34	13					95701-08095-00	D2	33	18				
80000				90042-ZE8-000	C1	16	13	93000											
				90042-ZE8-700	C1	16	13					96000							
80101-166-000	D4	35	14	90050-ZE1-000	C16	31	11	93500-03006-1H	C14	29	24								
					D7	38	26	93500-04014-0A	D7	38	29	96001-06025-00	D5	36	20				
87000				90055-ZE1-000	C16	31	12	93500-05008-0A	D3	34	15	96100-62073-00	C4	19	57				
				90121-952-000	C3	18	35	93500-05020-0A	D7	38	25								
87101-ZF5-V01	D9	40	1	90201-ZE3-V00	D3	34	14	93500-06006-0A	C16	31	15	98000							
87101-ZF5-V02	D9	40	1	90201-ZM0-000	C12	27	17					98079-55876	C1	16	19				
87516-Z4H-000	D9	40	2	90206-ZE1-000	C8	23	17	94000											
	D10	41	5	90320-747-000	C12	27	12					99000							
87516-Z4H-800	D10	41	5	90325-044-000	C15	30	7	94050-06000	C11	26	12								
87516-Z4H-810	D9	40	2	90401-437-000	C1	16	14		C12	27	14								
	D10	41	6	90406-VM6-000	C3	18	36		C15	30	10	99004-21002	D9	40	4				
87601-Z1E-U80	D9	40	3	90407-ZF5-L31	D5	36	14		D7	38	30	99101-ZH8-0880	C14	29	26				
87601-Z16-T30	D9	40	3	90417-HA0-000	C5	20	4		D8	39	21	99101-ZH8-0900	C14	29	26				
87601-ZF5-800	D9	40	3	90441-ZE2-010	C1	16	15	94050-08000	C16	31	16	99101-ZH8-0920	C14	29	26				
87601-ZF5-880	D9	40	3	90455-896-700	D1	32	12					99101-ZH8-0950	C14	29	26				
87601-ZF5-T10	D9	40	3	90471-SB0-000	D1	32	13		D10	41	8	99204-ZE2-0400	C14	29	27				
87601-ZF5-T20	D9	40	3	90601-ZE3-000	C7	22	6	94070-06080	D5	36	17								
87601-ZF5-U50	D9	40	3	90602-ZE1-000	C3	18	37	94101-06000	C16	31	17								
87601-ZF5-V50	D9	40	3	90634-ZL8-H00	C15	30	11	94101-06800	C4	19	48								
87601-ZF5-V60	D9	40	3	90682-735-A01	D5	36	15		D7	38	31								
87601-ZF5-W00	D9	40	3	90684-ZA0-601	D7	38	27		D8	39	22								
87601-ZF5-W10	D9	40	3	90701-HC4-000	C3	18	38	94103-06700	C4	19	49								
87601-ZF5-W20	D9	40	3	90741-ZE2-000	C5	20	5		C12	27	18								
87601-ZF5-W30	D9	40	3					94109-20000	C4	19	50								
87601-ZF5-W40	D9	40	3	91000				94111-04000	D7	38	32								
87601-ZF5-W50	D9	40	3					94111-05000	D7	38	33								
87601-ZF5-W60	D9	40	3	91001-ZF5-003	C3	18	39	94251-10000	C4	19	51								
				91201-Z1C-003	C3	18	40	94301-10120	D5	36	18								
90000				91203-952-771	C3	18	41	94301-12200	C1	16	17								
				91301-ZE9-003	C3	18	42												
90001-ZE8-000	C7	22	5	91302-ZE9-003	C3	18	43	95000											
90003-Z1E-000	C1	16	10	91302-ZL8-003	C3	18	44												
90004-ZE2-W01	C11	26	11	91303-HA0-004	C3	18	45	95001-45150-40	D1	32	14								
90006-ZF5-V00	C12	27	9	91424-Z4J-801	D1	32	14	95001-45180-30	C14	29	13								
90012-ZE0-010	C8	23	16	91424-Z4K-801	C14	29	13	95001-45230-50	D1	32	14								
90013-883-000	C1	16	11	91434-Z5N-811	D1	32	14	95001-45360-20	D1	32	14								
	C3	18	32	91434-Z5P-801	D1	32	14	95002-02080	C14	29	25								
	C12	27	10	91501-ZF5-000	C4	19	46		D1	32	15								
	D6	37	22	91501-ZF5-V00	C12	27	13	95002-40800-08	C14	29	28								
	D8	39	15	91502-ZF5-V00	C15	30	8		D2	33	16								
90014-ZE6-000	C3	18	33	91503-ZF5-V00	C15	30	9												
	C15	30	6	91503-ZY1-300	D5	36	16	95002-40850-08	D2	33	16								
90014-ZE8-000	C1	16	12	91504-SL0-003	D4	35	16	95002-41050-08	D2	33	20								
90015-883-000	D3	34	12	91504-ZF5-V00	D5	36	16	95002-70000	D2	33	17								
	D4	35	15					95701-06010-00	C12	27	15								
90015-ZE5-010	D6	37	23	92000				95701-06012-00	C1	16	18								
	D8	39	16						C4	19	52								
90015-ZE8-000	D6	37	24	92301-05014-1A	D7	38	28	95701-06016-00	C4	19	53								
	D8	39	17	92301-05016-0A	D7	38	28	95701-06025-00	C4	19	54								
90016-ZE8-000	C15	30	6		D8	39	19		D4	35	17								
90016-ZF5-W40	D7	38	25	92301-05022-0A	D8	39	20	95701-06032-00	D4	35	18								

3

# PART NAME INDEX

F 1

Part name	Address	Page	Ref.	Part name	Address	Page	Ref.	Part name	Address	Page	Ref.
[ A ]											
ADAPTER, OIL DRAIN EXTENSION	D10	41	9	BOLT, STUD, 8X131.5	C1	16	13	CONTROL ASSY.	D6	37	1
ARMATURE COMP.	D5	36	4	BOLT, STUD, 8X138.5	C1	16	13				2
ARM, GOVERNOR	D6	37	4	BOLT, STUD, 8X22	C1	16	16				3
	D8	39	3	BOLT, STUD, 8X32	C1	16	16		D8	39	1
ARM, VALVE ROCKER	C8	23	4	BOLT, STUD, 8X60	C16	31	13	CORD, MAGNET SWITCH	D5	36	10
ARRESTER, SPARK	C16	31	8	BOLT, STUD, 8X70	C16	31	14	CORD, STOP SWITCH	D4	35	9
				BOLT, THROUGH	D5	36	9				10
				BRACKET, FAN COVER	C12	27	5				11
				BRACKET, L. FAN COVER	C12	27	6	COVER COMP., FAN	C12	27	1
				BRACKET, RECTIFIER	D4	35	7				2
				BRACKET, R. FAN COVER	C12	27	4	COVER, AIR CLEANER	C15	30	3
				BRUSH SET	D5	36	6	COVER, HEAD	C1	16	6
				BUZZER ASSY.	D6	37	19	COVER, MAGNETIC SWITCH			
								TERMINAL	D5	36	12
[ B ]				[ C ]							
BAND B1, WIRE	D4	35	8	CAMSHAFT ASSY.	C8	23	2	COVER, OIL PUMP	C2	17	10
BARREL ASSY., CYLINDER	C2	17	3	CAP ASSY., FUEL TANK	D1	32	8	COVER, SCREEN GRID	C12	27	8
BASE, OIL FILTER	C2	17	20	CAP ASSY., NOISE SUPPRESSOR	D4	35	2	COVER, STARTER TERMINAL	D5	36	11
BEARING, RADIAL BALL, 6202	C3	18	39					COVER, SWITCH	D6	37	16
BEARING, RADIAL BALL, 6207	C4	19	57	CAP ASSY., OIL FILLER	C3	18	23	COVER, UNDER	C1	16	8
BODY, FUEL CAP	D1	32	9	CAP, BREATHER CHAMBER	C2	17	5	CRANKSHAFT COMP.	C5	20	1
BOLT, CONNECTING ROD	C7	22	5	CAP, CHOKE DUST	C13	28	10				
BOLT, DRAIN PLUG, 20MM	C4	19	47	CAP, MUFFLER	C16	31	5				
BOLT, FLANGE, 10X85	C1	16	10	CAP, SEALING	C15	30	11	DOWEL PIN, 10X12	D5	36	18
BOLT, FLANGE, 6MM	D6	37	24	CARBURETOR ASSY.	C13	28	8	DOWEL PIN, 12X20	C1	16	17
	D8	39	17	CARTRIDGE, OIL FILTER	C2	17	19	DOWEL PIN, 8X12	C3	18	38
BOLT, FLANGE, 6X10	C12	27	15	CASE COMP., RECOIL STARTER	C11	26	2	DRIVE ASSY.	D5	36	2
BOLT, FLANGE, 6X12	C1	16	11	CHAMBER SET, FLOAT	C13	28	4				
				CLAMP, TUBE	C14	29	28				
	C3	18	32		D2	33	16				
	C4	19	52	CLIP, BRAKE PIPE	D3	34	11	ELBOW COMP., AIR CLEANER	C15	30	5
	C12	27	10		D4	35	12	ELEMENT COMP., AIR CLEANER	C15	30	1
	D6	37	22	CLIP, GOVERNOR HOLDER	C3	18	37	ELEMENT, AIR CLEANER	C15	30	1
BOLT, FLANGE, 6X16	C4	19	53	CLIP, HARNESS	D7	38	27	EMBLEM, TOP COVER	D9	40	1
				CLIP, HOOD OPEN WIRE	D4	35	16	EXTENSION, OIL FILLER	C3	18	25
BOLT, FLANGE, 6X25	C3	18	35	CLIP, PISTON PIN, 20MM	C7	22	6				
	C4	19	54	CLIP, TUBE	C14	29	25				
	D4	35	17		D1	32	15	FAN, COOLING	D3	34	1
	D5	36	20	CLIP, VALVE GUIDE	C1	16	4	FILTER, OUTER	C15	30	2
BOLT, FLANGE, 6X28	D3	34	12	CLIP, WIRE HARNESS	D5	36	15	FLOAT SET	C13	28	3
	D4	35	15	COIL ASSY., CHARGE	D3	34	9	FLYWHEEL COMP.	D3	34	6
BOLT, FLANGE, 6X32	D3	34	13								7
	D4	35	18	COIL ASSY., IGNITION	D4	35	1				
BOLT, FLANGE, 6X35	C3	18	33	COIL ASSY., LAMP	D3	34	8	GASKET SET	C13	28	1
	C15	30	6	COLLAR, 6.5X11X10	D5	36	16	GASKET, CYLINDER HEAD	C1	16	5
BOLT, FLANGE, 6X45	C15	30	6	COLLAR, AIR CLEANER	C15	30	8	GASKET, EX. PIPE	C16	31	7
BOLT, FLANGE, 8X14	C16	31	18								9
BOLT, FLANGE, 8X16	C16	31	10	COLLAR, DISTANCE	D5	36	16		D10	41	1
	D10	41	7	COLLAR, EXTENSION	C3	18	29	GOVERNOR ASSY.	C3	18	26
BOLT, FLANGE, 8X20	C12	27	16	COLLAR, FAN COVER	C12	27	13	GRID, SCREEN	D3	34	5
BOLT, FLANGE, 8X35	D5	36	19	COLLAR, OIL FILTER SETTING	C4	19	46	GRIP, STARTER	C11	26	9
BOLT, FLANGE, 8X40	C4	19	55	COLLAR, SETTING	C14	29	12	GROMMET, WIRE CORD	D4	35	14
BOLT, FLANGE, 8X60	C4	19	56	COLLAR, STOPPER	D6	37	13	GUIDE, AIR	C14	29	23
BOLT, FLANGE, 8X95	D2	33	18	COLLAR, TANK SETTING	D1	32	7	GUIDE, EX. VALVE	C1	16	3
BOLT, GOVERNOR ARM	D6	37	23					GUIDE, IN. VALVE	C1	16	2
	D8	39	16								
BOLT, HEAD COVER	C1	16	12								
BOLT, PIVOT, 8MM	C8	23	16								
BOLT, RECESSED, 5X14	D7	38	28								
BOLT, RECESSED, 5X16	D7	38	28								
	D8	39	19								
BOLT, RECESSED, 5X22	D8	39	20								

# PART NAME INDEX

F 2

Part name	Address	Page	Ref.	Part name	Address	Page	Ref.	Part name	Address	Page	Ref.
GUIDE, PUSH ROD .....	C8	23	15	NUT, FLANGE, 8MM .....	C16	31	19	RING SET, PISTON .....	C6	21	1
[ H ]				NUT, PIVOT ADJUSTING .....	D10	41	8	ROD ASSY., CONNECTING .....	C7	22	4
HARNES ASSY., SUB WIRE .....	D10	41	4	NUT, SPECIAL, 16MM .....	C8	23	17	ROD, CHOKE .....	D6	37	6
HEAD COMP., CYLINDER .....	C1	16	1	NUT, SPRING, 6MM .....	D3	34	14	ROD, GOVERNOR .....	D8	39	5
HOLDER COMP., BRUSH .....	D5	36	7	NUT, TOOL BOX SETTING .....	C12	27	12	ROD, JOINT .....	D6	37	7
HOLDER, CABLE .....	D6	37	10	[ O ]				ROD, JOINT .....	D8	39	4
HOLDER, OIL FILTER .....	D8	39	10	OIL SEAL, 35X52X8 .....	C3	18	40	ROD, PUSH .....	D6	37	7
HOLDER, SCREEN GRID .....	C3	18	34	OIL SEAL, 8X14X5 .....	C3	18	41	ROD, PUSH .....	D8	39	6
HOLDER, STOP SWITCH CORD .....	D3	34	4	O-RING, 11X1.9 .....	C3	18	45	ROPE, RECOIL STARTER .....	C11	26	10
HOLDER, WIRE .....	D6	37	18	O-RING, 11.8X2.4 .....	C3	18	43	ROTATOR, VALVE .....	C8	23	14
HOSE, FUEL, 4.5X230 .....	D4	35	13	O-RING, 22.5X2.2 .....	C3	18	42	ROTOR COMP., INNER .....	C2	17	12
HOSE, FUEL, 4.5X360 .....	D1	32	14	O-RING, PUMP COVER .....	C3	18	44	ROTOR, OIL PUMP OUTER .....	C2	17	13
[ I ]				[ P ]				RUBBER B, TANK MOUNTING .....	D1	32	5
INSULATOR, CARBURETOR .....	C14	29	14	PACKING, BREATHER CAP .....	C2	17	7	RUBBER, OIL RETURN .....	C2	17	16
[ J ]				PACKING, CARBURETOR .....	C2	17	7	[ S ]			
JET SET, PILOT, .....	C14	29	27	PACKING, FUEL CAP .....	C14	29	17	SCREEN, OIL FILTER .....	C3	18	22
JET, MAIN, .....	C14	29	26	PACKING, FUEL COCK .....	D1	32	11	SCREW SET .....	C13	28	5
[ K ]				PACKING, HEAD COVER .....	C14	29	22	SCREW SET, DRAIN .....	C13	28	6
KEY, SPECIAL WOODRUFF, 25X18 .	C5	20	5	PACKING, INSULATOR .....	C1	16	7	SCREW SET, PILOT .....	C13	28	5
[ L ]				PACKING, OIL FILLER CAP .....	C14	29	18	SCREW, CENTER .....	C11	26	11
LEVER, CHOKE JOINT .....	D6	37	14	PACKING, OIL PAN .....	C3	18	24	SCREW, PAN, 3X6 .....	C14	29	24
LEVER, COCK .....	D8	39	14	PACKING, OIL PAN .....	C2	17	2	SCREW, PAN, 4X14 .....	D7	38	29
LIFTER, VALVE .....	C14	29	19	PAN ASSY., OIL .....	C2	17	1	SCREW, PAN, 5X20 .....	D7	38	25
[ M ]				PIN, LOCK, 10MM .....	C4	19	51	SCREW, PAN, 5X8 .....	D3	34	15
MARK, OPERATOR CAUTION .....	D9	40	2	PIN, PISTON .....	C7	22	3	SCREW, PAN, 6X6 .....	C16	31	15
MARK, TYPE .....	D10	41	5	PIPE, EX. .....	C16	31	6	SCREW, RECESSED, 5X20 .....	D7	38	25
MOTOR ASSY., STARTER .....	D9	40	3	PISTON .....	C6	21	2	SCREW, RECESSED, 5X35 .....	D8	39	18
MUFFLER COMP. ....	D5	36	1	PIVOT, ROCKER ARM .....	C7	22	2	SCREW, SPECIAL, 6X8 .....	C12	27	9
[ N ]				PLATE COMP., SUCTION .....	C8	23	6	SCREW, TAPPING, 4X6 .....	C16	31	12
NOZZLE, MAIN .....	C13	28	11	PLATE, COOLING FAN SETTING .....	C2	17	21	SCREW, TAPPING, 5X8 .....	C16	31	11
NUT-WASHER, 6MM .....	C14	29	11	PLATE, LEVER SETTING .....	D3	34	2	SCREW, THROTTLE STOP .....	D7	38	26
NUT SET, TERMINAL .....	D5	36	8	PLATE, OIL FILTER .....	C14	29	20	SEAL, VALVE STEM .....	C13	28	9
NUT, FLANGE, 6MM .....	C11	26	12	PLATE, OIL STOPPER .....	C2	17	14	SEAT, VALVE SPRING .....	C8	23	1
NUT, FLANGE, 8MM .....	C12	27	14	PLATE, ONE-WAY VALVE .....	C2	17	8	SEPARATOR, MUFFLER .....	C16	31	2
	C15	30	10	PLATE, SCREW ADJUST GUARD .....	C2	17	8	SHAFT, GOVERNOR ARM .....	C3	18	28
	D7	38	30	PLATE, SIDE .....	D8	39	2	SHROUD .....	C12	27	7
	D8	39	21	PLUG, SPARK .....	C12	27	3	SLIDER, GOVERNOR .....	C3	18	27
	C16	31	16	PROTECTOR, MUFFLER .....	C1	16	19	SPACER COMP., CARBURETOR .....	C14	29	16
				PROTECTOR, SWITCH .....	C16	31	4	SPACER, AIR CLEANER ELBOW .....	C15	30	4
				PULLEY COMP., STARTER .....	C3	18	31	SPONGE, FUEL CAP BREATHER .....	D1	32	10
				PULLEY, RECOIL STARTER .....	D3	34	3	SPRING, CABLE RETURN .....	D6	37	12
				[ R ]	C11	26	3	SPRING, COCK LEVER .....	D8	39	12
				RATCHET, STARTER .....	C11	26	4	SPRING, CONTROL ADJUSTING .....	C14	29	21
				RECTIFIER ASSY., REGULATOR .....	D4	35	4	SPRING, CONTROL ADJUSTING .....	D6	37	11
				RECTIFIER ASSY., SILICON .....	D10	41	3	SPRING, CONTROL ADJUSTING .....	D8	39	11
				RECTIFIER COMP., SILICON .....	D4	35	5	SPRING, FRICTION .....	C11	26	5
				RETAINER, EX. VALVE SPRING .....	D4	35	6	SPRING, GOVERNOR .....	D6	37	8
				RETAINER, IN. VALVE SPRING .....	C8	23	12	SPRING, GOVERNOR .....	D8	39	7
				RETAINER, SPRING .....	C8	23	11	SPRING, GOVERNOR PRIMARY .....	D6	37	9
					C11	26	8	SPRING, LEVER .....	D8	39	8
								SPRING, LEVER .....	D8	39	9
								SPRING, RATCHET .....	C11	26	7
								SPRING, STARTER RETURN .....	C11	26	6



# PART NAME INDEX

F 3

Part name	Address	Page	Ref.	Part name	Address	Page	Ref.	Part name	Address	Page	Ref.
SPRING, VALVE .....	C8	23	10								
SPRING, WEIGHT RETURN .....	C8	23	7								
STARTER ASSY., RECOIL .....	C11	26	1								
STAY COMP., MUFFLER .....	C16	31	3								
STAY COMP., UNDER COVER .....	C1	16	9								
STAY, BUZZER .....	D6	37	20								
STOPPER SET, PINION .....	D5	36	5								
STOPPER, OIL .....	C2	17	17								
STRAINER COMP., FUEL .....	D1	32	1								
STRAINER, FUEL .....	D1	32	2								
SUSPENSION, AUDIBLE PILOT .....	D6	37	21								
SWITCH ASSY., ENGINE .....	D6	37	15								
SWITCH ASSY., ENGINE STOP .....	D6	37	17								
SWITCH ASSY., STARTER MAGNETIC .....	D5	36	13								
SWITCH COMP., OIL LEVEL .....	C3	18	30								
[ T ]											
TANK, FUEL .....	D1	32	3								
TUBE, AIR VENT .....	C14	29	13								
TUBE, BREATHER .....	C2	17	4								
TUBE, FUEL .....	D1	32	4								
TUBE, FUEL, 4.5X150 .....	D1	32	14								
TUBE, FUEL, 4.5X180 .....	C14	29	13								
[ V ]											
VALVE SET, FLOAT .....	C13	28	2								
VALVE, BREATHER .....	C2	17	6								
VALVE, EX. ....	C8	23	9								
VALVE, IN. ....	C8	23	8								
VALVE, ONE WAY .....	C2	17	9								
[ W ]											
WASHER COMP., HEAD COVER .....	C1	16	15								
WASHER, DRAIN PLUG, 20MM .....	C4	19	50								
WASHER, PLAIN, 10MM .....	C1	16	14								
WASHER, PLAIN, 6MM .....	C4	19	48								
			49								
	C12	27	18								
	C16	31	17								
	D7	38	31								
	D8	39	22								
WASHER, PLAIN, 8MM .....	D1	32	13								
WASHER, SPRING, 4MM .....	D7	38	32								
WASHER, SPRING, 5MM .....	D7	38	33								
WASHER, TANK MOUNTING .....	D1	32	12								
WASHER, THRUST .....	D5	36	14								
WASHER, THRUST, 15MM .....	C5	20	4								
WASHER, THRUST, 8.1MM .....	C3	18	36								
WEIGHT A, BALANCER .....	C5	20	2								
WEIGHT B, BALANCER .....	C5	20	3								
WRENCH, BOX .....	D9	40	4								
[ Y ]											
YOKE COMP. ....	D5	36	3								



---

**1**

**FOREWORD INDEX**

---

**2**

**ENGINE GROUP**

---

**3**

**PART NUMBER INDEX**

---

**4**

**PART NAME INDEX**

---



**HONDA**  
The Power of Dreams



# PARTS CATALOGUE NEWS

Honda Motor Co., Ltd. Service Division

## PARTS CATALOGUE - CORRECTED

Printed in Japan

CODE NO.	13Z5V602
PARTS CATALOGUE NEWS	GXV390UT1 GXV390RT1
NEWS NO.	001

Block No.	Ref. No.	Note	Part No.	Description	Reqd. QTY		Serial No.	Parts catalogue code			
					GXV 390 UT1	GXV 390 RT1					
E-14	13		91424-Z4K-801	TUBE, FUEL, 4.5X180(FKM) .....	1	-	1008242 1028035	DCA, DFWT			
					-	1	----- 1028035	DCA, DFWT			
		A	91424-Z4K-802	.....	1	1	1028036 -----	DCA, DFWT			
E-15	1	L	17211-ZF5-V01	ELEMENT, AIR CLEANER .....	1	-	----- 1012652				
		T	17210-Z1E-801	ELEMENT COMP., AIR CLEANER ...	1	-	1012653				
					-	1					
	2	L	17218-ZF5-V00	FILTER, OUTER .....	1	-	----- 1012652				
	5		17410-ZF5-V00	ELBOW COMP., AIR CLEANER .....	1	-	----- 1012652				
	A	17410-Z1E-801	.....	1	-	1012653 -----	DABG, DET3, DE33, DNE4, DN4, DXE2, DXE4, DX2				
					1	-	1012653 1021223	DAEU, DAS, DAU, DA23, DA33, DCA, DETR, DFWT			
	T	17410-Z5V-000	.....	1	-	1021224 -----	DAEU, DAS, DAU, DA23, DA33, DCA, DETR, DFWT				
				-	1						
E-16	7	L	18333-ZE3-800	GASKET, EX. PIPE .....	1	-	----- 1018626	DABG, DAEU, DAS, DAU, DA23, DA33, DCA, DETR, DET3, DE33, DNE4, DN4, DXE2, DXE4, DX2			
								1	-	1014216 -----	DFWT
								-	1	-----	DFWT

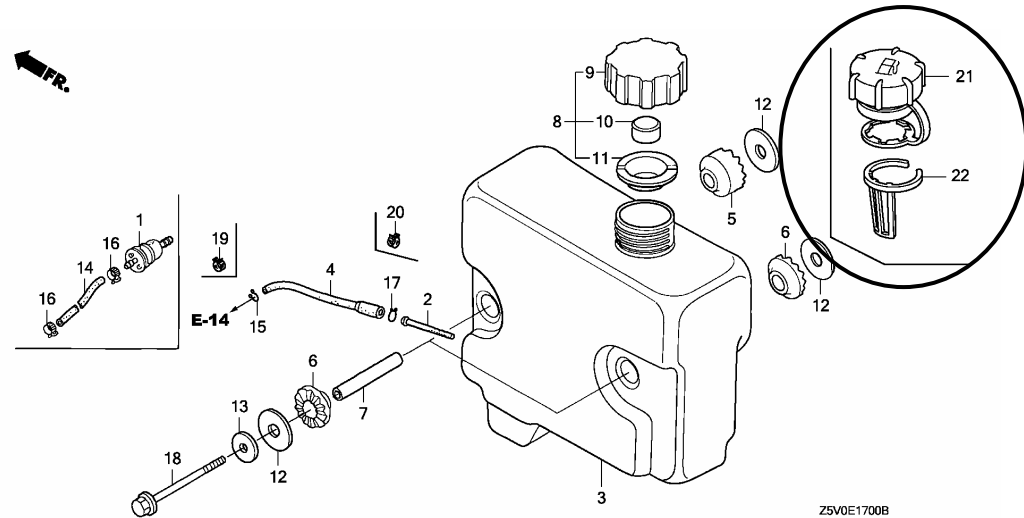
NOTE A:PART NO. CHANGE D:NEWLY PROVIDED E:PART NO. DELETION K:REQUIRED NO. CORRECTION L:APPLICATION SERIAL NO. CORRECTION  
T:APPLICATION CORRECTION Z:REMARKS CHANGE

PARTS CATALOGUE NEWS

BOOKNo. : 13Z5V602

Block No.	Ref. No.	Note	Part No.	Description	Reqd. QTY		Serial No.	Parts catalogue code
					GXV 390 UT1	GXV 390 RT1		
		T	18333-Z1C-801	.....	1	-	1018627	DABG, DAEU, DAS, DAU, DA23, DA33, DCA, DETR, DET3, DE33, DNE4, DN4 DXE2, DXE4, DX2
					-	1	-----	DAEU, DAS, DAU, DA23, DA33, DCA, DETR
	9	L	18382-ZE9-800	GASKET, EX. PIPE .....	1	-	1018626	DABG, DAEU, DAS, DAU, DA23, DA33, DETR, DET3, DE33, DNE4, DN4, DXE2 DXE4, DX2
		T	18382-Z1F-801	.....	1	-	1018627	DABG, DAEU, DAS, DAU, DA23, DA33, DETR, DET3, DE33, DNE4, DN4, DXE2 DXE4, DX2
					-	1	-----	DAEU, DAS, DAU, DA23, DA33, DETR

E-17 FUEL TANK



E-17	4		17512-Z5N-003	TUBE, FUEL (FKM) .....	1	-	1003218 1027715	DABG, DET3, DE33, DNE4, DN4, DXE2, DXE4, DX2
		A	17512-Z5N-013	.....	1	-	1027716	DABG, DET3, DE33, DNE4, DN4, DXE2, DXE4, DX2
	8	L	17620-ZE7-000	CAP ASSY., FUEL TANK .....	1	-	1019651	DABG, DET3, DE33, DNE4, DN4, DXE2, DXE4, DX2
	9	L	17621-ZE6-000	BODY, FUEL CAP .....	1	-	1019651	DABG, DET3, DE33, DNE4, DN4, DXE2, DXE4, DX2
	10	L	17622-888-010	SPONGE, FUEL CAP BREATHER .....	1	-	1019651	DABG, DET3, DE33, DNE4, DN4, DXE2, DXE4, DX2

NOTE A:PART NO. CHANGE D:NEWLY PROVIDED E:PART NO. DELETION K:REQUIRED NO. CORRECTION L:APPLICATION SERIAL NO. CORRECTION  
T:APPLICATION CORRECTION Z:REMARKS CHANGE

PARTS CATALOGUE NEWS

BOOKNo. : 13Z5V602

Block No.	Ref. No.	Note	Part No.	Description	Reqd. QTY		Serial No.	Parts catalogue code
					GXY 390 UT1	GXY 390 RT1		
	14	L	95001-45230-50	HOSE, FUEL, 4. 5X230 (95001-45001-50M)	1	-	----- 1019763	DAS
			91434-Z5N-811	HOSE, FUEL, 4. 5X360 (FKM) . . . . .	1	-	1003506 1028259	DAEU, DAU, DA23, DA33, DCA, DFWT
					-	1	----- 1028259	DAEU, DAU, DA23, DA33, DCA, DFWT
		T	91434-Z5P-801	HOSE, FUEL, 4. 5X230 (FKM) . . . . .	1	-	1019764 1027739	DAS
					-	1	----- 1027739	DAS
		A	91434-Z5N-812	HOSE, FUEL, 4. 5X360 (FKM) . . . . .	1	1	1028260 -----	DAEU, DAU, DA23, DA33, DCA, DFWT
		A	91434-Z5P-802	HOSE, FUEL, 4. 5X230 (FKM) . . . . .	1	1	1027740 -----	DAS
	21	D	17620-Z0J-800	CAP ASSY., FUEL TANK . . . . .	1	-	1019652 -----	DABG, DET3, DE33, DNE4, DN4, DXE2, DXE4, DX2
	22	D	17636-Z5N-000	GAUGE, FUEL LEVEL . . . . .	1	-	1019652 -----	DABG, DET3, DE33, DNE4, DN4, DXE2, DXE4, DX2
E-20	1	L	30500-Z1E-013	COIL ASSY., IGNITION . . . . .	1	-	----- 1010660	
		T	30500-Z1E-023	.....	1	-	1010661	
					-	1		

NOTE A:PART NO. CHANGE D:NEWLY PROVIDED E:PART NO. DELETION K:REQUIRED NO. CORRECTION L:APPLICATION SERIAL NO. CORRECTION  
T:APPLICATION CORRECTION Z:REMARKS CHANGE



December 21, 2008



# PARTS CATALOGUE NEWS

Honda Motor Co., Ltd. Service Division

## PARTS CATALOGUE - CORRECTED

Printed in Japan

CODE NO.	13Z5V602
PARTS CATALOGUE NEWS	GXV390UT1 GXV390RT1
NEWS NO.	002

Block No.	Ref. No.	Note	Part No.	Description	Reqd. QTY		Serial No.	Parts catalogue code
					GXV 390 UT1	GXV 390 RT1		
E-17	11	L	17624-ZE7-000	PACKING, FUEL CAP .....	1	-	----- 1019651	DABG, DET3, DE33, DNE4, DN4, DXE2, DXE4, DX2

NOTE A:PART NO. CHANGE D:NEWLY PROVIDED E:PART NO.DELETION K:REQUIRED NO. CORRECTION L:APPLICATION SERIAL NO. CORRECTION  
T:APPLICATION CORRECTION Z:REMARKS CHANGE



# PARTS CATALOGUE NEWS

Honda Motor Co., Ltd. Service Division

Printed in Japan

CODE NO.	13Z5V602
PARTS CATALOGUE NEWS	GXV390UT1 GXV390RT1
NEWS NO.	003

## GXV390RT1-DCGP TYPE sales parts information

NOTE: This Parts Catalogue News explains only the parts of the different model that are produced to conform to addition of the GXV390RT1-DCGP type.

As for the parts not listed on this Parts Catalogue News, use the parts of the GXV390RT1-DCA type.

### • Models, parts catalogue codes and applicable serial numbers

Model	Type		Parts catalogue type	Applicable engine serial No.	Applicable carburetor identification No.
GXV390RT1	DCA	Base type	DCA	GJADT-1000001~	BE86R C
	DCGP	Additional type	DCGP		

• Features of each type		Base type	Additional type
Specifications	Model	GXV390RT1	
	Type	DCA	DCGP
Recoil starter			
Muffler			
Fuel tank			
Starter motor			

Block No.	Ref. No.	Part No.	Description	Reqd. QTY		Base Part No.	Parts catalogue code
				GXV 390 UT1	GXV 390 RT1		
E-3	8		PLATE, ONE-WAY VALVE .....	-	0	12375-ZE9-H00	
	9		VALVE, ONE WAY .....	-	0	12376-ZE8-000	
	14	15334-ZE8-010	PLATE, OIL FILTER .....	-	1		
	15		PLATE, OIL FILTER .....	-	0	15334-ZE8-811	
	17		STOPPER, OIL .....	-	0	15336-ZE8-000	
	18		PLATE, OIL STOPPER .....	-	0	15337-ZE8-000	
	21		PLATE COMP., SUCTION .....	-	0	15420-ZE8-000	
	30		SWITCH COMP., OIL LEVEL .....	-	0	35410-ZF5-013	
	31		PROTECTOR, SWITCH .....	-	0	35419-ZF5-000	
	32	90013-883-000	BOLT, FLANGE, 6X12(CT200) ....	-	2	90013-883-000	
	44		O-RING, 11.8X2.4 .....	-	0	91302-ZL8-003	
	46	91501-ZF5-000	COLLAR, OIL FILTER SETTING ...	-	1		
	53		BOLT, FLANGE, 6X16 .....	-	0	95701-06016-00	

## PARTS CATALOGUE NEWS

BOOKNo. : 13Z5V602

Block No.	Ref. No.	Part No.	Description	Reqd. QTY		Base Part No.	Parts catalogue code
				GXV 390 UT1	GXV 390 RT1		
E-12	1	19610-ZE9-V01ZB	COVER COMP., FAN *NH1*.....BLACK	-	1	19610-ZE9-V01ZC	
E-22	1	16500-ZF5-U11	CONTROL ASSY. (AYP) .....	-	1		
	4	16551-ZF5-000	ARM, GOVERNOR .....	-	1		
	5	16555-ZE9-000	ROD, GOVERNOR .....	-	1		
	6	16556-ZE9-000	ROD, CHOKE .....	-	1		
	7	16557-ZE8-810	ROD, JOINT .....	-	1		
	8	16561-ZF5-000	SPRING, GOVERNOR .....	-	1		
	9	16563-ZE8-000	SPRING, GOVERNOR PRIMARY .....	-	1		
	10	16576-891-000	HOLDER, CABLE .....	-	1		
	11	16584-883-300	SPRING, CONTROL ADJUSTING .....	-	1		
	12	16592-732-700	SPRING, CABLE RETURN .....	-	1		
	14	16619-ZF5-000	LEVER, CHOKE JOINT .....	-	1		
	22	90013-883-000	BOLT, FLANGE, 6X12 (CT200) .....	-	1		
	23	90015-ZE5-010	BOLT, GOVERNOR ARM .....	-	1		
	24	90015-ZE8-000	BOLT, FLANGE, 6MM .....	-	1		
	25	93500-05020-0A	SCREW, PAN, 5X20 .....	-	1		
	28	92301-05014-1A	BOLT, RECESSED, 5X14 .....	-	1		
	30	94050-06000	NUT, FLANGE, 6MM .....	-	1		
	31	94101-06800	WASHER, PLAIN, 6MM .....	-	1		
E-22-1	1		CONTROL ASSY. ....	-	0	16500-ZF5-U20	
	2		PLATE, SCREW ADJUST GUARD .....	-	0	16539-ZF5-L40	
	3		ARM, GOVERNOR .....	-	0	16551-ZF5-000	
	4		ROD, GOVERNOR .....	-	0	16555-ZE9-000	
	5		ROD, CHOKE .....	-	0	16556-ZE9-000	

## PARTS CATALOGUE NEWS

BOOKNo. : 13Z5V602

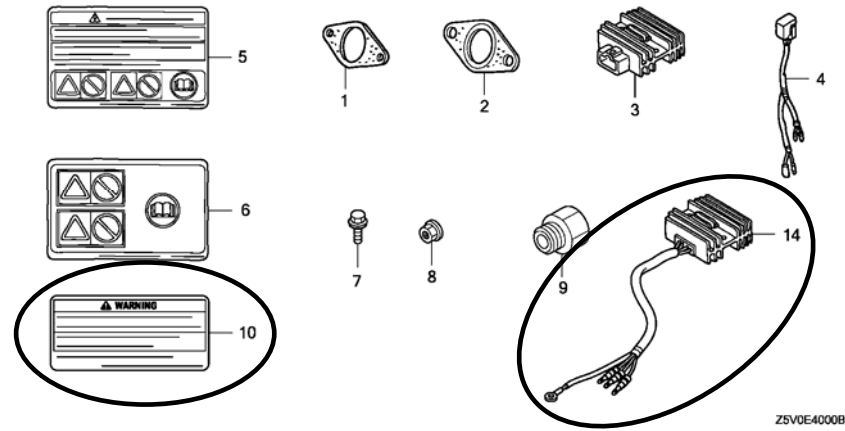
Block No.	Ref. No.	Part No.	Description	Reqd. QTY		Base Part No.	Parts catalogue code
				GXV 390 UT1	GXV 390 RT1		
	6		ROD, JOINT .....	-	0	16557-ZE8-000	
	7		SPRING, GOVERNOR .....	-	0	16561-ZF5-000	
	8		SPRING, GOVERNOR PRIMARY .....	-	0	16563-ZE8-000	
	9		SPRING, LEVER .....	-	0	16574-ZF5-L00	
	10		HOLDER, CABLE .....	-	0	16576-891-000	
	11		SPRING, CONTROL ADJUSTING .....	-	0	16584-883-300	
	12		SPRING, CABLE RETURN .....	-	0	16592-732-700	
	13		COLLAR, STOPPER .....	-	0	16599-ZG1-M10	
	14		LEVER, CHOKE JOINT .....	-	0	16619-ZF5-000	
	15		BOLT, FLANGE, 6X12 (CT200) .....	-	0	90013-883-000	
	16		BOLT, GOVERNOR ARM .....	-	0	90015-ZE5-010	
	17		BOLT, FLANGE, 6MM .....	-	0	90015-ZE8-000	
	18		SCREW, RECESSED, 5X35 .....	-	0	90016-ZG1-M10	
	19		BOLT, RECESSED, 5X16 .....	-	0	92301-05016-0A	
	20		BOLT, RECESSED, 5X22 .....	-	0	92301-05022-0A	
	21		NUT, FLANGE, 6MM .....	-	0	94050-06000	
	22		WASHER, PLAIN, 6MM .....	-	0	94101-06800	
E-28	2		MARK, OPERATOR CAUTION (PICTOGRAPH) (MADE IN THAI)	-	(0)	87516-Z4H-810	
		87519-Z4H-000	MARK, OPERATOR CAUTION (PICTOGRAPH)	-	1	87516-Z4H-000	
	3	87601-ZBK-000	MARK, TYPE (DCGP) .....	-	1	87601-ZF5-800	

PARTS CATALOGUE NEWS

BOOKNo. : 13Z5V602

Block No.	Ref. No.	Part No.	Description	Reqd. QTY		Base Part No.	Parts catalogue code
				GXV 390 UT1	GXV 390 RT1		

E-40 OTHER PARTS



E-40	3		RECTIFIER ASSY., REGULATOR (10A)	-	0	31600-ZE2-861
	4		HARNESS ASSY., SUB WIRE . . . . .	-	0	32110-ZB5-G30
	5		MARK, OPERATOR CAUTION (FRENCH) (MADE IN THAI)	-	0	87516-Z4H-800
	10	87516-Z4H-010	MARK, OPERATOR CAUTION (ENGLISH) (MADE IN THAI)	-	1	
		87516-Z4H-801	MARK, OPERATOR CAUTION (FRENCH) (MADE IN THAI)	-	1	
	14	31750-Z0A-821	RECTIFIER ASSY., REGULATOR ...	-	1	

September 20, 2009



# PARTS CATALOGUE NEWS

Honda Motor Co., Ltd. Service Division

## PARTS CATALOGUE - CORRECTED

Printed in Japan

CODE NO.	13Z5V602
PARTS CATALOGUE NEWS	GXV390UT1 GXV390RT1
NEWS NO.	004

Block No.	Ref. No.	Note	Part No.	Description	Reqd. QTY		Serial No.	Parts catalogue code
					GXV 390 UT1	GXV 390 RT1		
E-19	14	D	90201-ZE3-790	NUT, SPECIAL, 16MM .....	-	1		

NOTE A:PART NO. CHANGE D:NEWLY PROVIDED E:PART NO.DELETION K:REQUIRED NO. CORRECTION L:APPLICATION SERIAL NO. CORRECTION  
T:APPLICATION CORRECTION Z:REMARKS CHANGE

January 21, 2010



# PARTS CATALOGUE NEWS

Honda Motor Co., Ltd. Service Division

## PARTS CATALOGUE - CORRECTED

Printed in Japan

CODE NO.	13Z5V602
PARTS CATALOGUE NEWS	GXV390UT1 GXV390RT1
NEWS NO.	005

Block No.	Ref. No.	Note	Part No.	Description	Reqd. QTY		Serial No.	Parts catalogue code
					GXV 390 UT1	GXV 390 RT1		
E-22	11	T	16584-883-300	SPRING, CONTROL ADJUSTING . . . .	1	1	-----	DABG, DAEU, DAU, DCGP, DET3, DE33, DNE4, DN4, DXE2, DXE4, DX2
					1	-	-----	DAS, DA23, DA33, DETR

NOTE A:PART NO. CHANGE D:NEWLY PROVIDED E:PART NO.DELETION K:REQUIRED NO. CORRECTION L:APPLICATION SERIAL NO. CORRECTION  
T:APPLICATION CORRECTION Z:REMARKS CHANGE





# PARTS CATALOGUE NEWS

Honda Motor Co., Ltd. Service Division

Printed in Japan

CODE NO.	13Z5V602
PARTS CATALOGUE NEWS	GXV390UT1 GXV390RT1
NEWS NO.	006

## GXV390UT1-DN2, GXV390RT1-DAE4 TYPES sales parts information

NOTE: This Parts Catalogue News explains only the parts of the different model that are produced to conform to addition of the GXV390UT1-DN2, GXV390RT1-DAE4 types.

As for the parts not listed on this Parts Catalogue News, use the parts of the GXV390UT1-DN4, GXV390RT1-DAEU types.

### • Models, parts catalogue codes and applicable serial numbers

Model	Type		Parts catalogue type	Applicable engine serial No.	Applicable carburetor identification No.	
GXV390UT1	DN4	Base type	DN4	GJADT-1000001~	BE86P A / B	
	DN2	Additional type	DN2		BE86P B	
GXV390RT1	DAEU	Base type	DAEU			BE86P B
	DAE4	Additional type	DAE4			

PARTS CATALOGUE NEWS

BOOKNo. : 13Z5V602

• Features of each type		Base type	Additional type	Base type	Additional type
Specifications	Model	GXV390UT1		GXV390RT1	
	Type	DN4	DN2	DAEU	DAE4
Recoil starter		●	●	●	●
Muffler		●	●	●	●
Fuel tank		●	●		
Starter motor				●	●

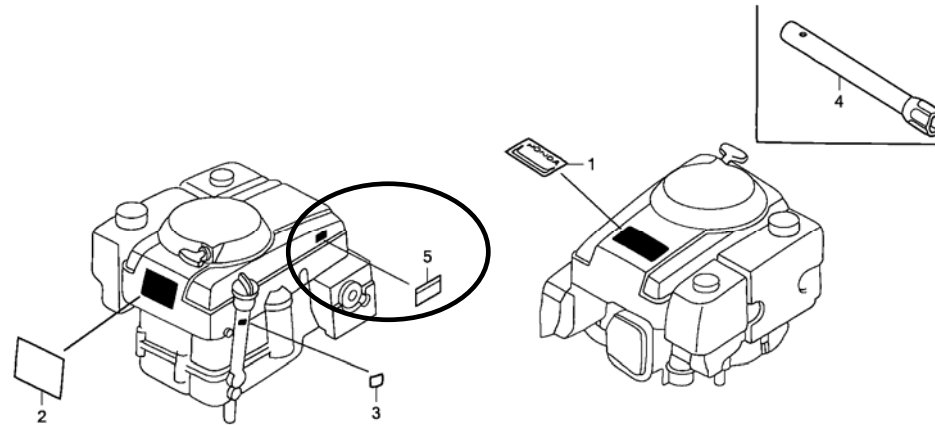
Block No.	Ref. No.	Part No.	Description	Reqd. QTY		Base Part No.	Parts catalogue code
				GXV 390 UT1	GXV 390 RT1		
E-11	1	28400-ZE3-W02ZP	STARTER ASSY., RECOIL *R280*..... POWER RED	1	1	28400-ZE3-W01ZP	
	9	28461-ZE2-W03	GRIP, STARTER .....	1	1	28461-ZE2-W02	
E-14	26	99101-ZH8-0880	JET, MAIN, #88 .....	(1)	-	99101-ZH8-0920	
E-16	4	18321-ZF5-010	PROTECTOR, MUFFLER .....	1	1	18321-ZF5-000	
E-19	14	90201-ZE3-790	NUT, SPECIAL, 16MM .....	1	-	90201-ZE3-V00	

PARTS CATALOGUE NEWS

BOOKNo. : 13Z5V602

Block No.	Ref. No.	Part No.	Description	Reqd. QTY		Base Part No.	Parts catalogue code
				GXV 390 UT1	GXV 390 RT1		

E-28 LABEL



Z5V0E2800A

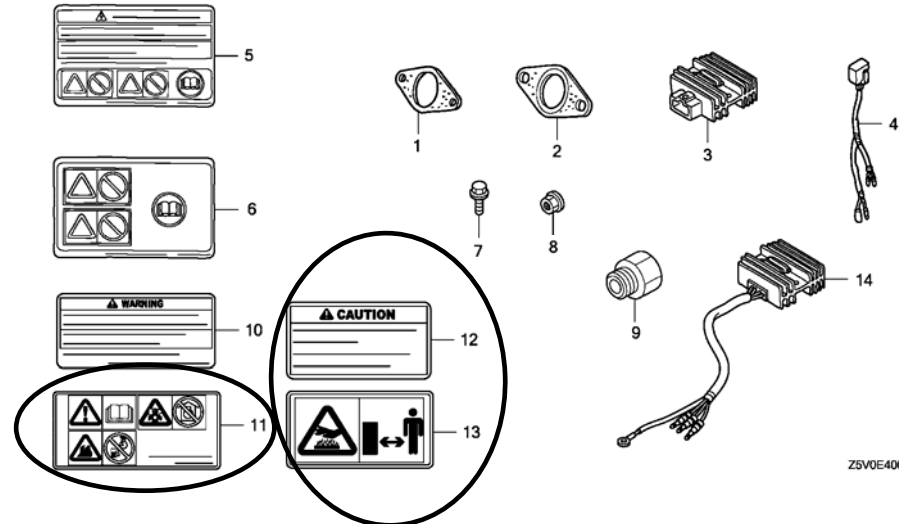
E-28	1	87101-ZF5-V02	EMBLEM, TOP COVER (GXV390) ...	1	-	87101-ZF5-V01
	2		MARK, OPERATOR CAUTION (PICTOGRAPH) (MADE IN THAI)	(0)	(0)	87516-Z4H-810
		87516-Z4H-010	MARK, OPERATOR CAUTION (ENGLISH) (MADE IN THAI)	1	-	87516-Z4H-000
		87519-Z4H-000	MARK, OPERATOR CAUTION (PICTOGRAPH)	-	1	87516-Z4H-000
	3	87601-ZBK-U60	MARK, TYPE (DAE4) .....	-	1	87601-ZF5-U50
		87601-ZF5-920	MARK, TYPE (DN2) .....	1	-	87601-ZF5-W40
	5	87539-Z0J-000	MARK, EX. CAUTION (ENGLISH) ..	1	-	

PARTS CATALOGUE NEWS

BOOKNo. : 13Z5V602

Block No.	Ref. No.	Part No.	Description	Reqd. QTY		Base Part No.	Parts catalogue code
				GXV 390 UT1	GXV 390 RT1		

E-40 OTHER PARTS



Z5V0E4000C

E-40	5		MARK, OPERATOR CAUTION (FRENCH) (MADE IN THAI)	0	0	87516-Z4H-800	
	10	87516-Z4H-010	MARK, OPERATOR CAUTION (ENGLISH) (MADE IN THAI)	-	1		
		87516-Z4H-801	MARK, OPERATOR CAUTION (FRENCH) (MADE IN THAI)	1	1		
	11	87519-Z4H-000	MARK, OPERATOR CAUTION (PICTOGRAPH)	1	-		
	12	87539-Z0J-000	MARK, EX. CAUTION (ENGLISH) ..	-	1		
		87539-Z0J-810	MARK, EX. CAUTION (FRENCH) ...	1	1		
	13	87539-Z0J-800	MARK, EX. CAUTION (PICTOGRAPH)	1	-		