

This catalog covers:  
**FE290D-□G80**

This fig. covers:  
**TITLE**

# PARTS CATALOG

## 4-STROKE ENGINE

### FE290D

PRODUCT CODE	NOTE
FE290D-BG80	MOWER (HR801F2700)
FE290D-CG80	



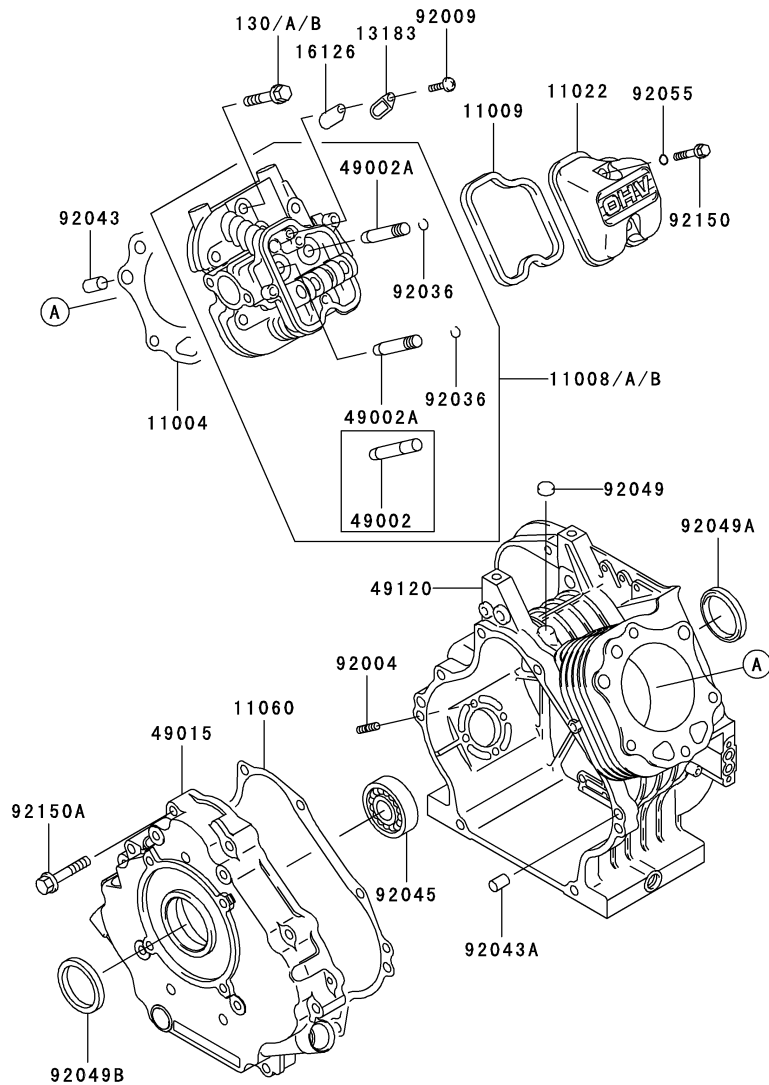
This catalog covers:

FE290D- □ G80

This fig. covers:

# 01 CYLINDER/CRANKCASE

E0110-A422B



Ref. No.	Part No.	Description	Quantity	
			B	C
11004	11004-2138	GASKET-HEAD	1	1
11008	11008-2128	HEAD-COMP-CYLINDER	*	
11008A	11008-2158	HEAD-COMP-CYLINDER		1
11008B	11008-2158	HEAD-COMP-CYLINDER	1	
11009	11009-2829	GASKET,ROCKER CASE	1	1
11022	11022-6001	CASE-ROCKER	1	1
11060	11060-2122	GASKET,CRANKCASE COVER	1	1
13183	13183-2299	PLATE	1	1
16126	16126-2107	VALVE	1	1
49002	49002-2090	GUIDE-VALVE	*	
49002A	49002-2101	GUIDE-VALVE	2	2
49015	49015-6147	COVER-CRANKCASE	1	1
49120	49120-2217	CRANKCASE-COMP	1	1
92004	92004-2083	STUD,6X14	4	4
92009	92009-2308	SCREW	1	1
92036	92036-023	RING-SNAP	2	2
92043	92043-1037	PIN	2	2
92043A	92043-1263	PIN	2	2
92045	92045-2168	BEARING-BALL,6306JRCM	1	1
92049	92049-2097	SEAL-OIL,VC6X10X2.5	1	1
92049A	92049-2199	SEAL-OIL	1	1
92049B	92049-2220	SEAL-OIL	1	1
92055	92055-1343	RING-O	2	2
92150	92150-2145	BOLT,6X35	2	2
92150A	92150-2252	BOLT,8X45	8	8
130	130CA0845	BOLT-FLANGED,8X45		6
130A	130T0845	BOLT-FLANGED,8X45	6	
130B	130T0845	BOLT-FLANGED,8X45		*

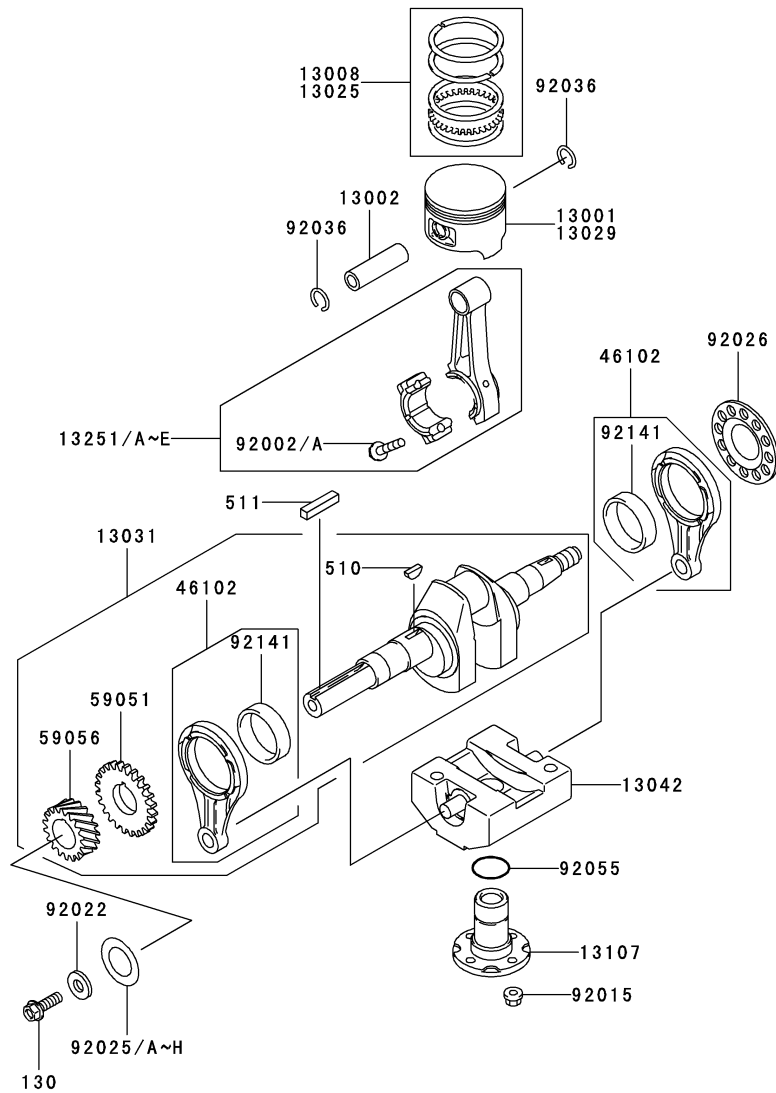
This catalog covers:

FE290D- □ G80

This fig. covers:

# 02 PISTON/CRANKSHAFT

E0120-A205B



Ref. No.	Part No.	Description	Quantity	
			B	C
13001	13001-2125	PISTON-ENGINE	1	1
13002	13002-2069	PIN-PISTON	1	1
13008	13008-6007	RING-SET-PISTON	1	1
13025	13025-2074	RING-SET-PISTON L,0.50	AR	AR
13029	13029-2101	PISTON-ENGINE L,0.50	AR	AR
13031	13031-2068	CRANKSHAFT-COMP	1	1
13042	13042-6009	WEIGHT	1	1
13107	13107-2088	SHAFT	1	1
13251	13251-2077	ROD-ASSY-CONNECTING		1
13251A	13251-2079	ROD-ASSY-CONNECTING,U/S=0.50		AR
13251B	13251-6034	ROD-ASSY-CONNECTING,U/S=0.50	AR	
13251C	13251-6034	ROD-ASSY-CONNECTING,U/S=0.50		*
13251D	13251-6056	ROD-ASSY-CONNECTING	1	
13251E	13251-6056	ROD-ASSY-CONNECTING		*
46102	46102-6004	ROD	2	2
59051	59051-2097	GEAR-SPUR	1	1
59056	59056-2993	GEAR-HELICAL	1	1
92002	92002-2053	BOLT		AR
92002A	92002-2053	BOLT	2	2
92015	92015-1193	NUT	4	4
92022	92022-2116	WASHER	1	1
92025	92025-2168	SHIM,T=1.13	AR	AR
92025A	92025-2169	SHIM,T=1.18	AR	AR
92025B	92025-2170	SHIM,T=1.23	AR	AR
92025C	92025-2171	SHIM,T=1.28	AR	AR
92025D	92025-2172	SHIM,T=1.33	AR	AR
92025E	92025-2173	SHIM,T=1.38	AR	AR
92025F	92025-2174	SHIM,T=1.43	AR	AR
92025G	92025-2175	SHIM,T=1.48	AR	AR
92025H	92025-2207	SHIM,T=1.53	AR	AR
92026	92026-2052	SPACER	1	1
92036	92036-008	RING-SNAP	2	2
92055	92055-2072	RING-O	1	1
92141	92141-2090	BEARING-PLANE	2	2
130	130BA0825	BOLT-FLANGED,8X25	1	1
510	510A5100	KEY-WOODRUFF	1	1
511	511A0735	KEY-SUNK	1	1

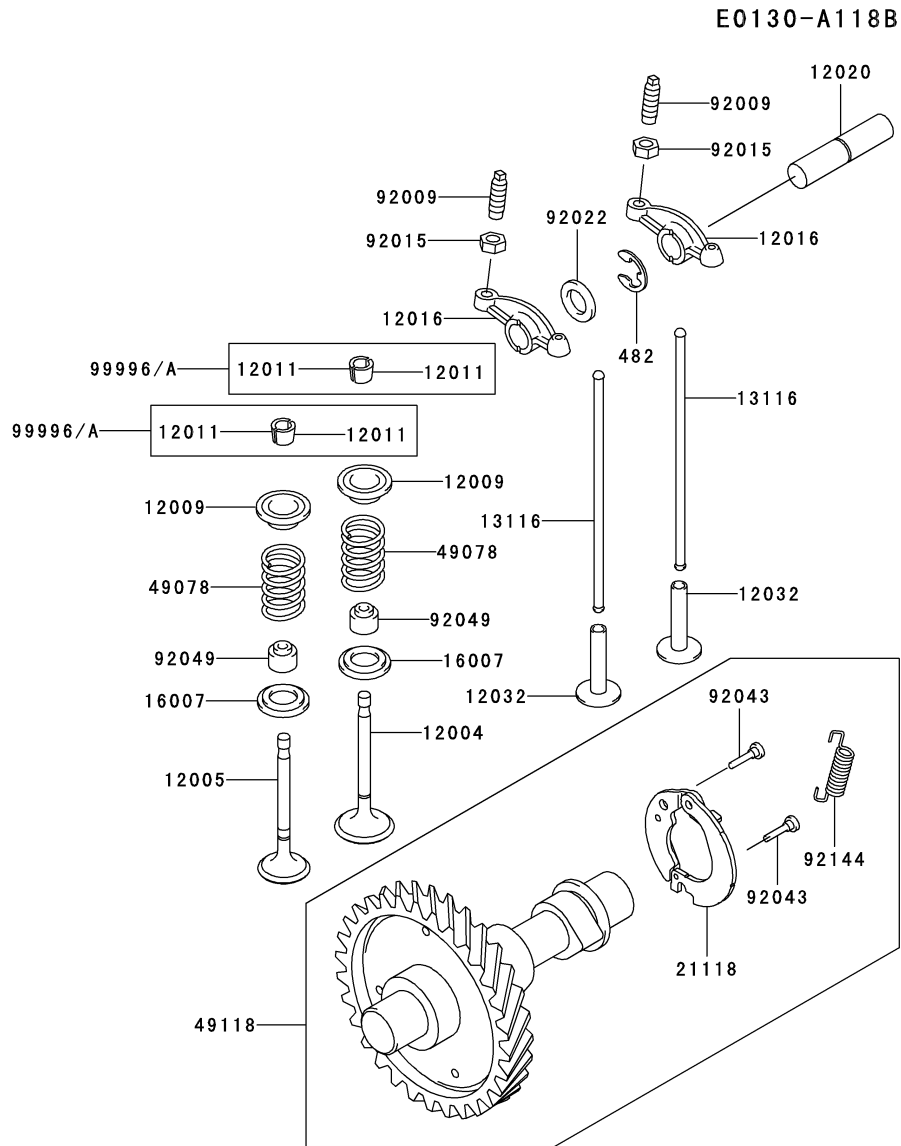
This catalog covers:

FE290D- □ G80

03

This fig. covers:

VALVE/CAMSHAFT



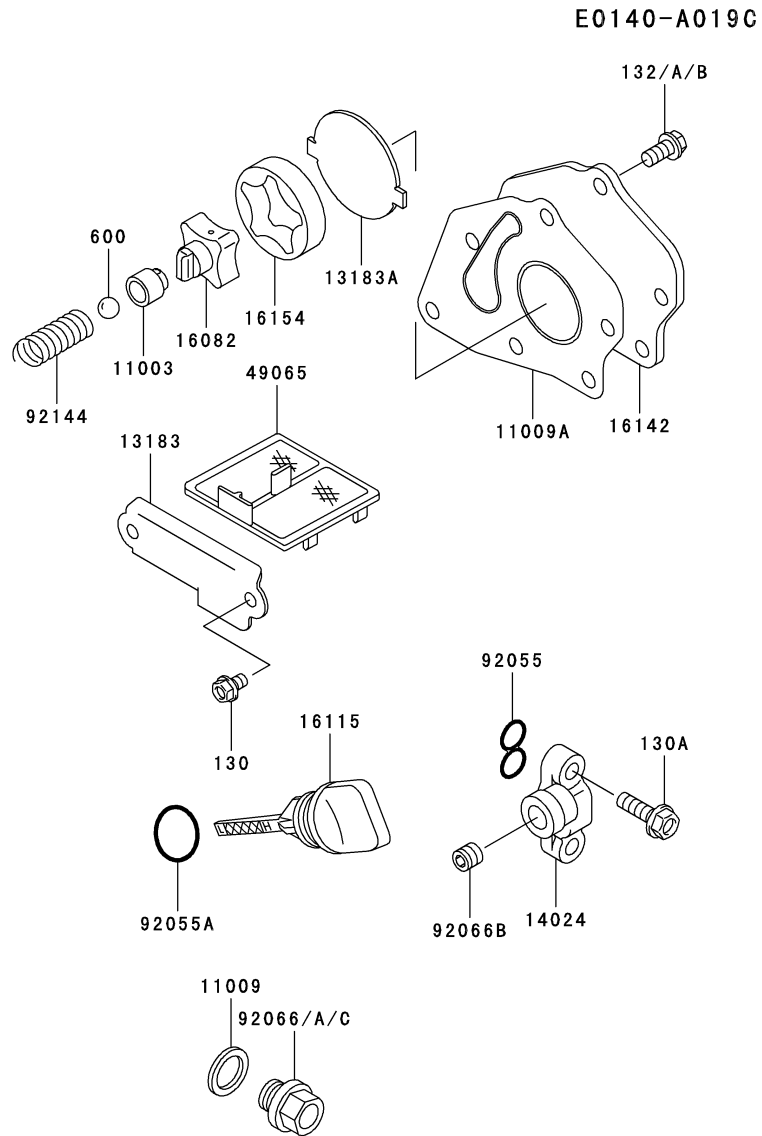
Ref. No.	Part No.	Description	Quantity	
			B	C
12004	12004-2084	VALVE-INTAKE	1	1
12005	12005-2077	VALVE-EXHAUST	1	1
12009	12009-2060	RETAINER-VALVE SPRING	2	2
12011	12011-2052	COLLET	4	4
12016	12016-2058	ARM-ROCKER	2	2
12020	12020-2060	SHAFT-ROCKER	1	1
12032	12032-2060	TAPPET	2	2
13116	13116-2054	ROD-PUSH	2	2
16007	16007-2052	SEAT-SPRING	2	2
21118	21118-2088	DECOMPRESSOR	1	1
49078	49078-2060	SPRING-ENGINE VALVE	2	2
49118	49118-2121	CAMSHAFT-COMP	1	1
92009	92009-1109	SCREW	2	2
92015	92015-1137	NUT	2	2
92022	92022-2397	WASHER,12.1X19X1.6	1	1
92043	92043-2113	PIN	2	2
92049	92049-2100	SEAL-OIL,VSB 7X12X5.5X9.7	2	2
92144	92144-2323	SPRING	1	1
99996	99996-2077	KIT,COLLET		2
99996A	99996-2077	KIT,COLLET	2	
482	482J0100	CIRCLIP-TYPE-E,10MM	1	1

This catalog covers:

FE290D- □ G80

This fig. covers:

**04 LUBRICATION-EQUIPMENT**



Ref. No.	Part No.	Description	Quantity	
			B	C
11003	11003-2089	SEAT-VALVE	1	1
11009	11009-2175	GASKET,14.2X19X2	2	2
11009A	11009-2828	GASKET,OIL PUMP	1	1
13183	13183-2295	PLATE,OIL FILTER	1	1
13183A	13183-2298	PLATE,OIL PUMP	1	1
14024	14024-2228	COVER	1	1
16082	16082-2062	PUMP-ASSY-OIL	1	1
16115	16115-2079	CAP-OIL FILLER	2	2
16142	16142-2062	COVER-PUMP	1	1
16154	16154-2054	ROTOR-PUMP,OUT	1	1
49065	49065-2068	FILTER-OIL	1	1
92055	92055-2063	RING-O	1	1
92055A	92055-2185	RING-O,20MM	2	2
92066	92066-2203	PLUG,DRAIN	2	*
92066A	92066-2203	PLUG,DRAIN		
92066B	92066-2211	PLUG	1	1
92066C	92066-2253	PLUG,14X12		2
92144	92144-2202	SPRING	1	1
130	130AA0508	BOLT-FLANGED,5X8	2	2
130A	130BA0620	BOLT-FLANGED,6X20	2	2
132	132BA0612	BOLT-FLANGED-SMALL,6X12		6
132A	132G0612	BOLT-FLANGED-SMALL,6X12	6	
132B	132G0612	BOLT-FLANGED-SMALL,6X12		*
600	600A1000	BALL-STEEL,5/16"	1	1

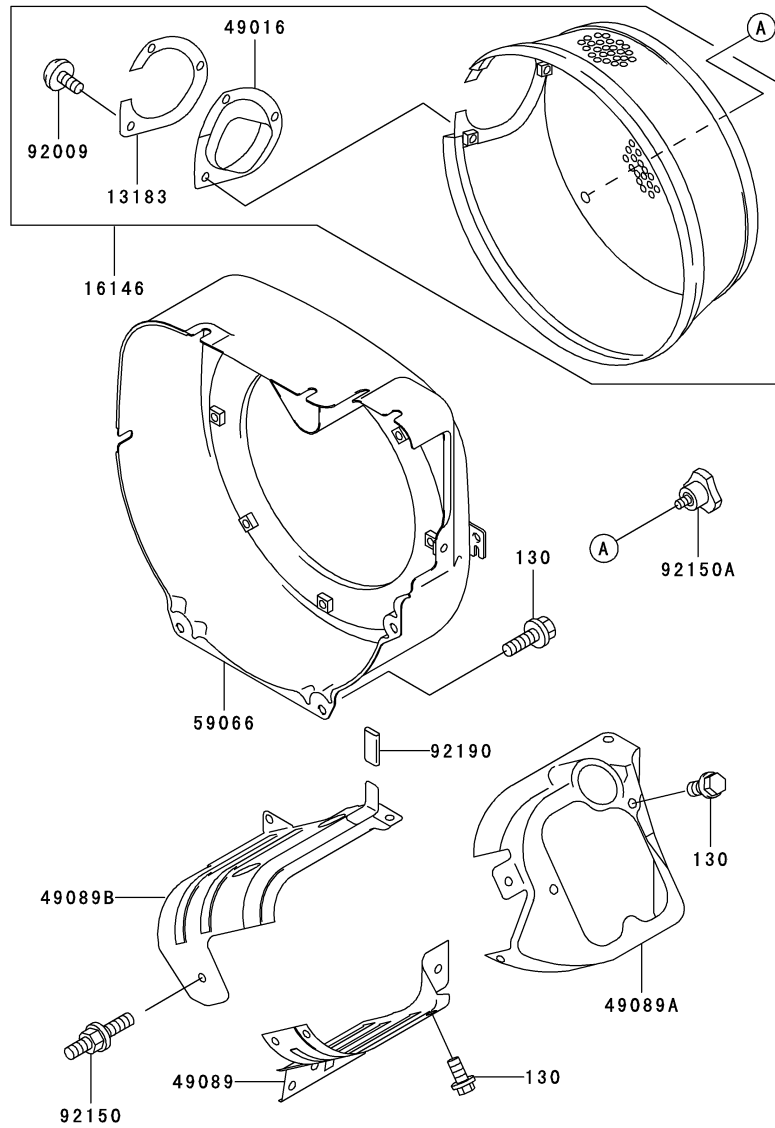
This catalog covers:

FE290D- □ G80

This fig. covers:

**05 COOLING-EQUIPMENT**

E0150-A388A



Ref. No.	Part No.	Description	Quantity	
			B	C
13183	13183-2483	PLATE	1	1
16146	16146-2193	COVER-ASSY	1	1
49016	49016-2082	COVER-SEAL	1	1
49089	49089-2309-9H	SHROUD-ENGINE	1	1
49089A	49089-2317-9H	SHROUD-ENGINE	1	1
49089B	49089-2318-9H	SHROUD-ENGINE	1	1
59066	59066-2538-9H	HOUSING-FAN	1	1
92009	92009-2243	SCREW,5X10	3	3
92150	92150-2197	BOLT	1	1
92150A	92150-2264	BOLT	4	4
92190	92190-2042	TUBE	1	1
130	130BA0612	BOLT-FLANGED,6X12	15	15

This catalog covers:

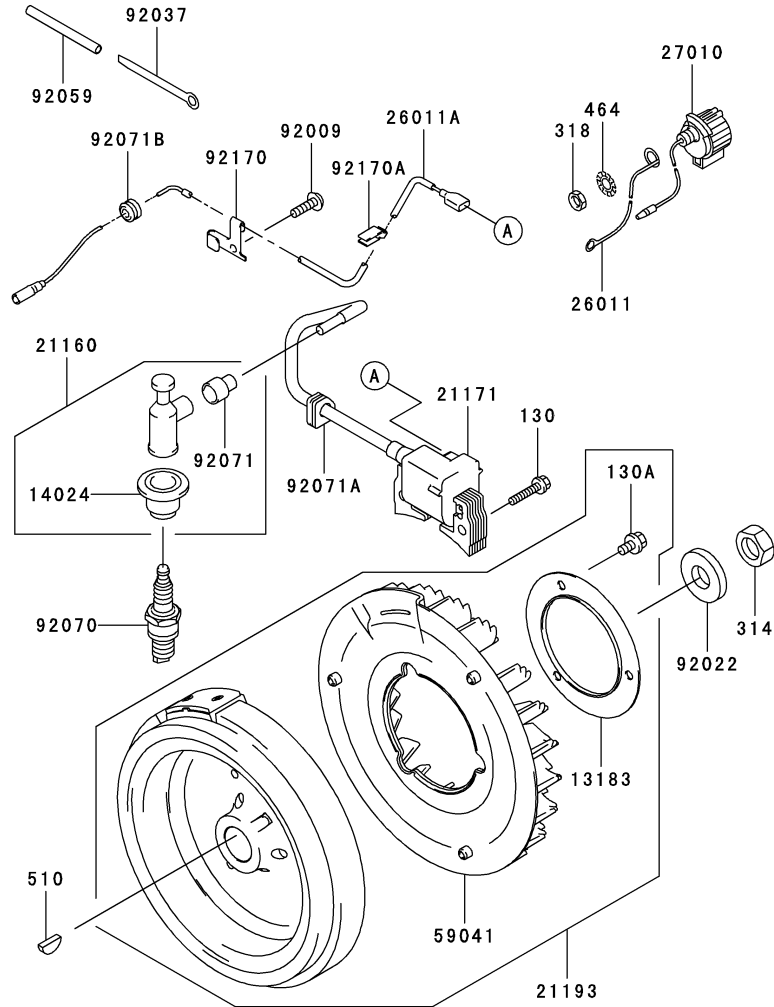
FE290D- □ G80

06

This fig. covers:

ELECTRIC-EQUIPMENT

E0160-A738A



Ref. No.	Part No.	Description	Quantity	
			B	C
13183	13183-2407	PLATE	1	1
14024	14024-2234	COVER	1	1
21160	21160-2051	CAP-ASSY-PLUG	1	1
21171	21171-2207	COIL-ASSY-IGNITION	1	1
21193	21193-2161	FLYWHEEL-ASSY	1	1
26011	26011-2266	WIRE-LEAD	1	1
26011A	26011-2359	WIRE-LEAD	1	1
27010	27010-2066	SWITCH	1	1
59041	59041-2082	FAN	1	1
92009	92009-2308	SCREW	1	1
92022	92022-2205	WASHER	1	1
92037	92037-2006	CLAMP	1	1
92059	92059-2011	TUBE,5X6X75	1	1
92070	92070-2077	PLUG-SPARK,BPR5ES(NGK),SOLID	1	1
92071	92071-2008	GROMMET	1	1
92071A	92071-2112	GROMMET	1	1
92071B	92071-2125	GROMMET	1	1
92170	92170-2016	CLAMP	1	1
92170A	92170-2017	CLAMP	1	1
130	130AA0525	BOLT-FLANGED,5X25	2	2
130A	130BA0610	BOLT-FLANGED,6X10	3	3
314	314G1600	NUT-HEX-FINE,16MM	1	1
318	318B0800	NUT-HEX-SMALL,8MM	1	1
464	464H0800	WASHER-TOOTHED,8MM	1	1
510	510A5100	KEY-WOODRUFF	1	1



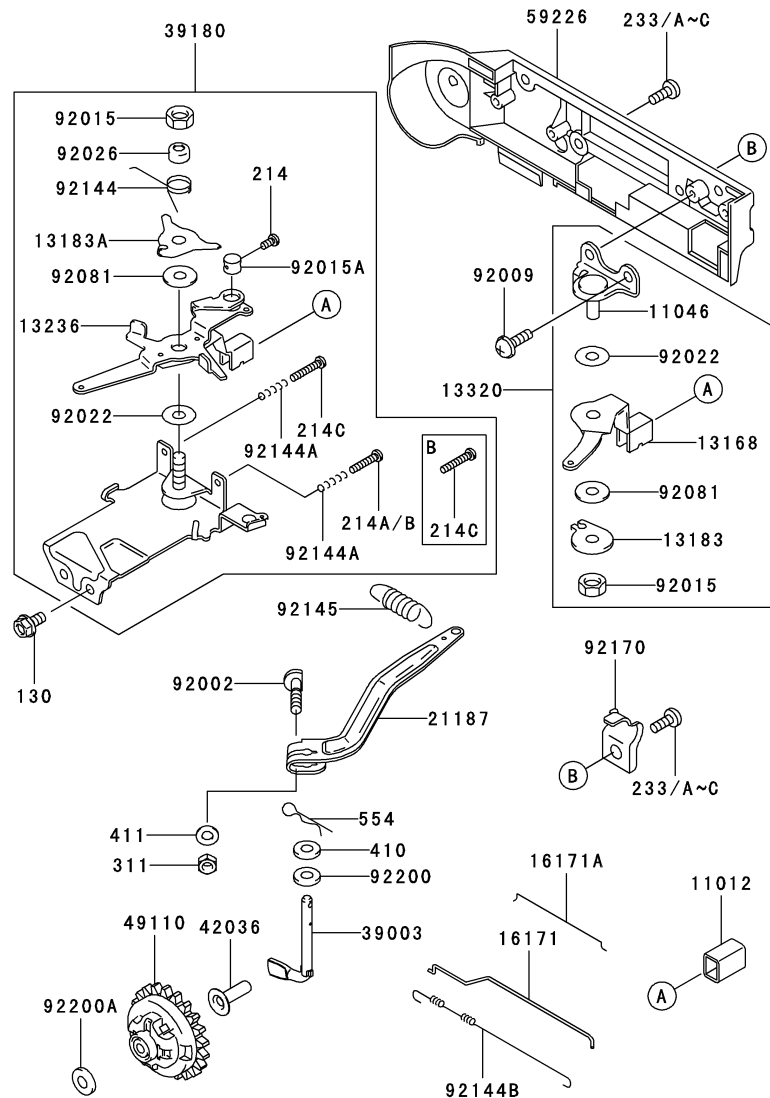
This catalog covers:

FE290D- □ G80

This fig. covers:

**07 CONTROL-EQUIPMENT**

E0170-A617A



Ref. No.	Part No.	Description	Quantity	
			B	C
11012	11012-2282	CAP	2	2
11046	11046-2143	BRACKET	1	1
13168	13168-2314	LEVER	1	1
13183	13183-2334	PLATE	1	1
13183A	13183-2343	PLATE	1	1
13236	13236-2116	LEVER-COMP	1	1
13320	13320-2021	LEVER-ASSY	1	1
16171	16171-2061	LINK, THROTTLE	1	1
16171A	16171-2062	LINK	1	1
21187	21187-2061	ARM-ASSY	1	1
39003	39003-2076	ARM-PIVOT	1	1
39180	39180-2643	PANEL-ASSY-CONTROL	1	1
42036	42036-2060	SLEEVE	1	1
49110	49110-2069	GOVERNOR-ASSY	1	1
59226	59226-2229	PANEL-CONTROL	1	1
92002	92002-2269	BOLT, 6X28	1	1
92009	92009-2203	SCREW	2	2
92015	92015-2051	NUT	2	2
92015A	92015-2120	NUT	1	1
92022	92022-2103	WASHER	2	2
92026	92026-2158	SPACER	1	1
92081	92081-2104	SPRING	2	2
92144	92144-2257	SPRING	1	1
92144A	92144-2266	SPRING	2	2
92144B	92144-2340	SPRING	1	1
92145	92145-2054	SPRING	1	1
92170	92170-2035	CLAMP	1	1
92200	92200-2029	WASHER, 6.5X11.5X2.0	1	1
92200A	92200-2036	WASHER, 6.2X20X0.5	1	1
130	130BA0612	BOLT-FLANGED, 6X12	2	2
214	214AA0408	SCREW-PAN+-, 4X8	1	1
214A	214AA0420	SCREW-PAN+-, 4X20		1
214B	214B0420	SCREW-PAN+-, 4X20		*
214C	214B0422	SCREW-PAN+-, 4X22	2	1
233	233AB0514	SCREW-PAN-WP+-, 5X14		4
233A	233C0514	SCREW-PAN-WP+-, 5X14		*
233B	233F0514	SCREW-PAN-WP+-, 5X14		*
233C	233F0514	SCREW-PAN-WP+-, 5X14	4	
311	311B0600	NUT-HEX, 6MM	1	1
410	410B0600	W-PLAIN-S, 6MM	1	1
411	411B0600	WASHER-PLAIN, 6MM	1	1
554	554A0600	PIN-SNAP, 1.2X21.2	1	1

This catalog covers:

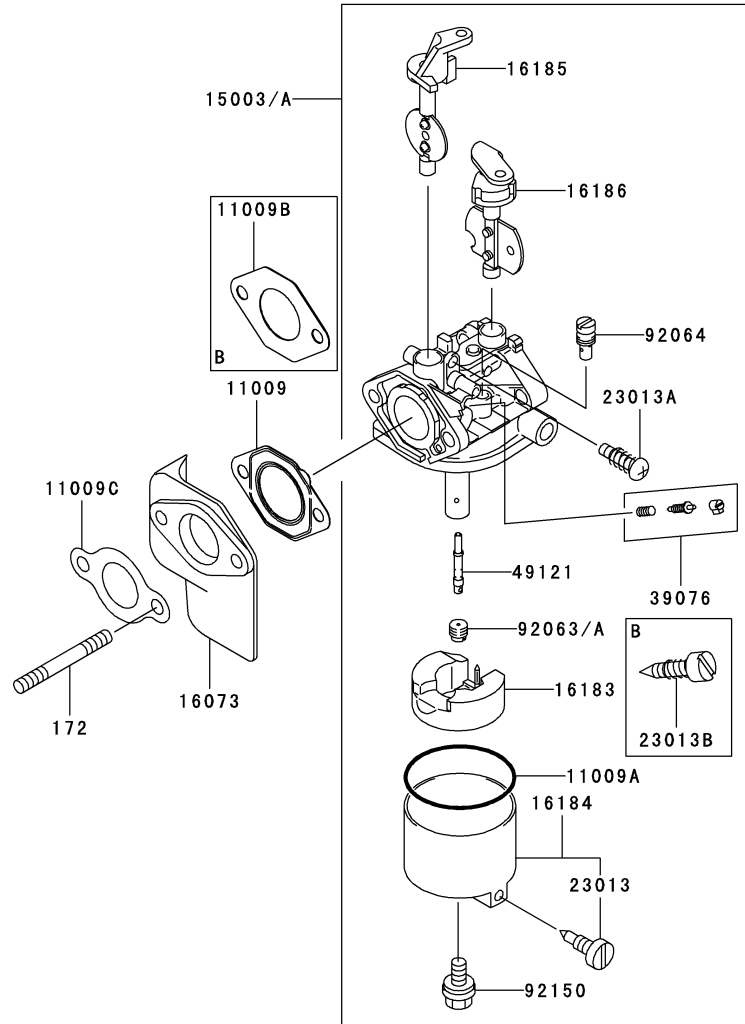
FE290D- □ G80

08

This fig. covers:

CARBURETOR

E0180-A728A



Ref. No.	Part No.	Description	Quantity	
			B	C
11009	11009-2827	GASKET,CARBURETOR		1
11009A	11009-2919	GASKET	1	1
11009B	11009-2928	GASKET,CARBURETOR	1	
11009C	11009-2939	GASKET,INSULATOR	1	1
15003	15003-2385	CARBURETOR-ASSY	1	
15003A	15003-2647	CARBURETOR-ASSY		1
16073	16073-2154	INSULATOR	1	1
16183	16183-2005	FLOAT-ASSY	1	1
16184	16184-2002	CHAMBER-ASSY-FLOAT	1	1
16185	16185-2008	VALVE-ASSY-THROTTLE	1	1
16186	16186-2018	VALVE-ASSY-CHOKE	1	1
23013	23013-2053	SCREW-ASSY	1	1
23013A	23013-2054	SCREW-ASSY	1	1
23013B	23013-2055	SCREW-ASSY	1	
39076	39076-2055	LIMITER		1
49121	49121-2193	NOZZLE-MAIN	1	1
92063	92063-2243	JET-MAIN,#90	1	
92063A	92063-2325	JET-MAIN,#90		1
92064	92064-2083	JET-PILOT,#45	1	1
92150	92150-2209	BOLT	1	1
172	172BA0675	BOLT-STUD,6X75	2	2

This catalog covers:

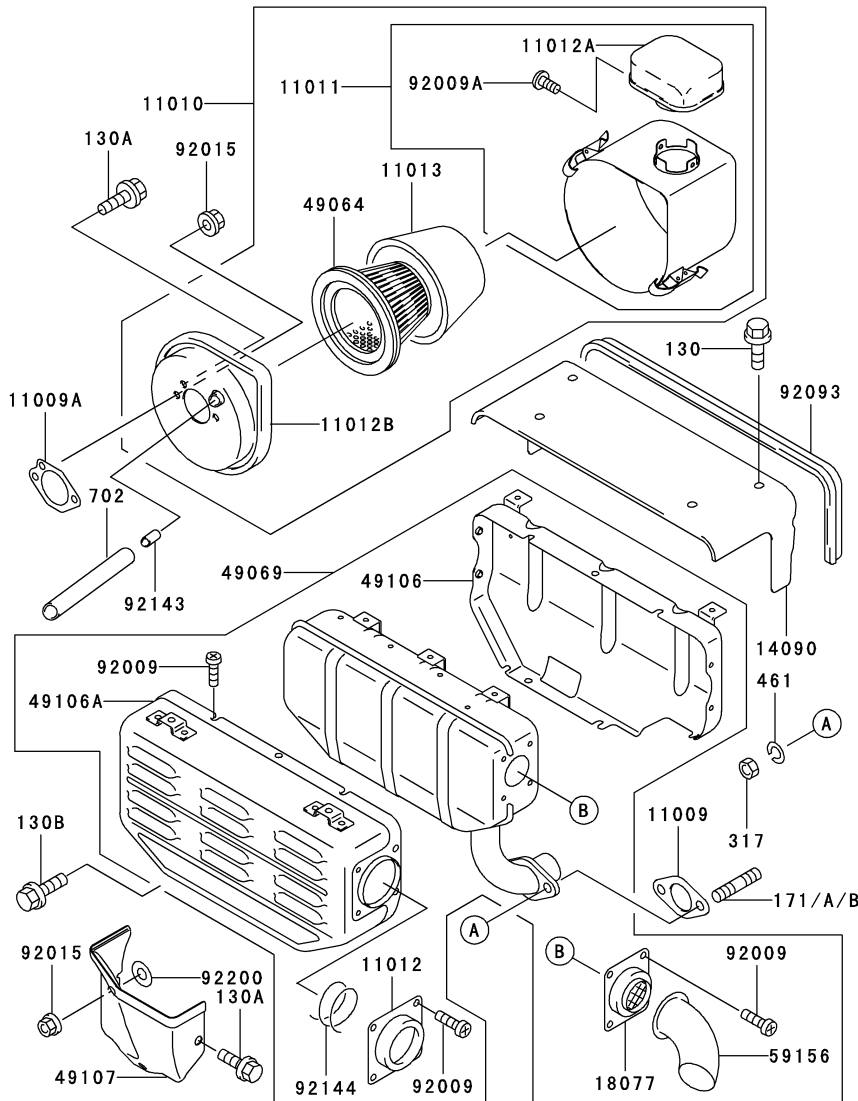
FE290D- □ G80

09

This fig. covers:

AIR-FILTER/MUFFLER

E0190-A486B



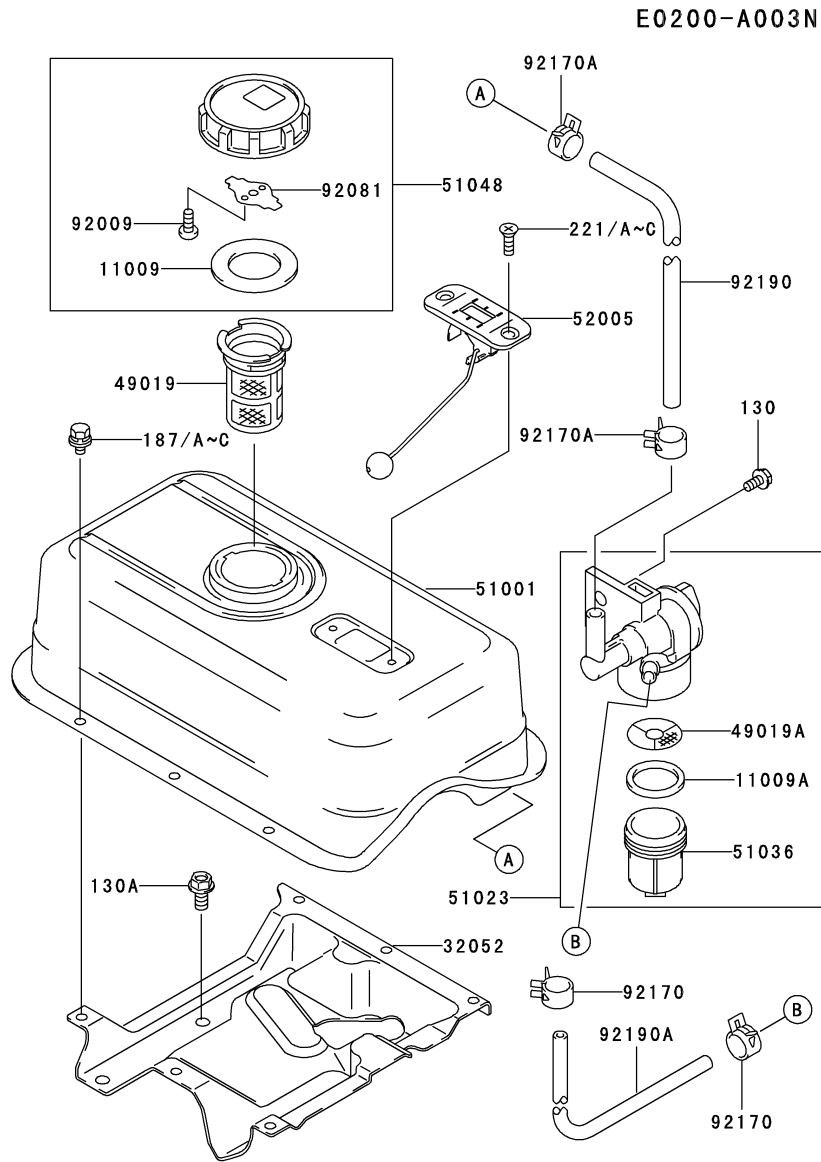
Ref. No.	Part No.	Description	Quantity	
			B	C
11009	11009-2487	GASKET,MUFFLER	1	1
11009A	11009-2925	GASKET,AIR FILTER	1	1
11010	11010-2474-9H	FILTER-ASSY-AIR	1	1
11011	11011-2247-9H	CASE-AIR FILTER	1	1
11012	11012-2322-9X	CAP	1	1
11012A	11012-2357	CAP,AIR FILTER	1	1
11012B	11012-2358	CAP,AIR FILTER	1	1
11013	11013-2159	ELEMENT-AIR FILTER	1	1
14090	14090-2019-9H	COVER	1	1
18077	18077-2094	ARRESTER-SPARK	1	1
49064	49064-2077	FILTER-AIR	1	1
49069	49069-2275	MUFFLER-ASSY	1	1
49106	49106-2514-9X	COVER-MUFFLER	1	1
49106A	49106-2549-9X	COVER-MUFFLER	1	1
49107	49107-2140-9H	COVER-EXHAUST PIPE	1	1
59156	59156-2230-9Y	PIPE-TAIL	1	1
92009	92009-2322	SCREW	15	15
92009A	92009-2388	SCREW	2	2
92015	92015-1193	NUT	3	3
92093	92093-2094	SEAL	1	1
92143	92143-2207	COLLAR,6.0X8.0X25	1	1
92144	92144-2262	SPRING	1	1
92200	92200-2070	WASHER	1	1
130	130AA0508	BOLT-FLANGED,5X8	4	4
130A	130BA0612	BOLT-FLANGED,6X12	3	3
130B	130BA0816	BOLT-FLANGED,8X16	1	1
171	171BA0820	BOLT-STUD,8X20		2
171A	171G0820	BOLT-STUD,8X20	2	
171B	171G0820	BOLT-STUD,8X20		*
317	317R0800	NUT-HEX-SMALL,8MM	2	2
461	461F0800	WASHER-SPRING,8MM	2	2
702	702A081000	TUBE-RUBBER	1	1

This catalog covers:

**FE290D- □ G80**

This fig. covers:

**10 FUEL-TANK/FUEL-VALVE**



Ref. No.	Part No.	Description	Quantity	
			B	C
11009	11009-2115	GASKET	1	1
11009A	11009-2876	GASKET,FUEL TAP	1	1
32052	32052-2199-9H	BRACKET-TANK	1	1
49019	49019-2051	FILTER-FUEL	1	1
49019A	49019-2095	FILTER-FUEL	1	1
51001	51001-2222-9H	TANK-COMP-FUEL	1	1
51023	51023-2148	TAP-ASSY	1	1
51036	51036-2071	CUP,FUEL TAP	1	1
51048	51048-2055	CAP-ASSY-TANK	1	1
52005	52005-2100	GAUGE	1	1
92009	92009-2021	SCREW	2	2
92081	92081-2036	SPRING	1	1
92170	92170-2042	CLAMP	2	2
92170A	92170-2082	CLAMP	2	2
92190	92190-2073	TUBE,7X12X205	1	1
92190A	92190-2118	TUBE,6X10X120	1	1
130	130BA0612	BOLT-FLANGED,6X12	1	1
130A	130BA0816	BOLT-FLANGED,8X16	4	4
187	187BB0612	BOLT-UPSET-WSP,6X12		6
187A	187J0612	BOLT-UPSET-WSP,6X12	*	
187B	187L0612	BOLT-UPSET-WSP,6X12		*
187C	187L0612	BOLT-UPSET-WSP,6X12	6	
221	221AB0512	SCREW-CSK-CROS,5X12	*	2
221A	221C0512	SCREW-CSK-CROS,5X12		*
221B	221F0512	SCREW-CSK-CROS,5X12		*
221C	221F0512	SCREW-CSK-CROS,5X12	2	

This catalog covers:

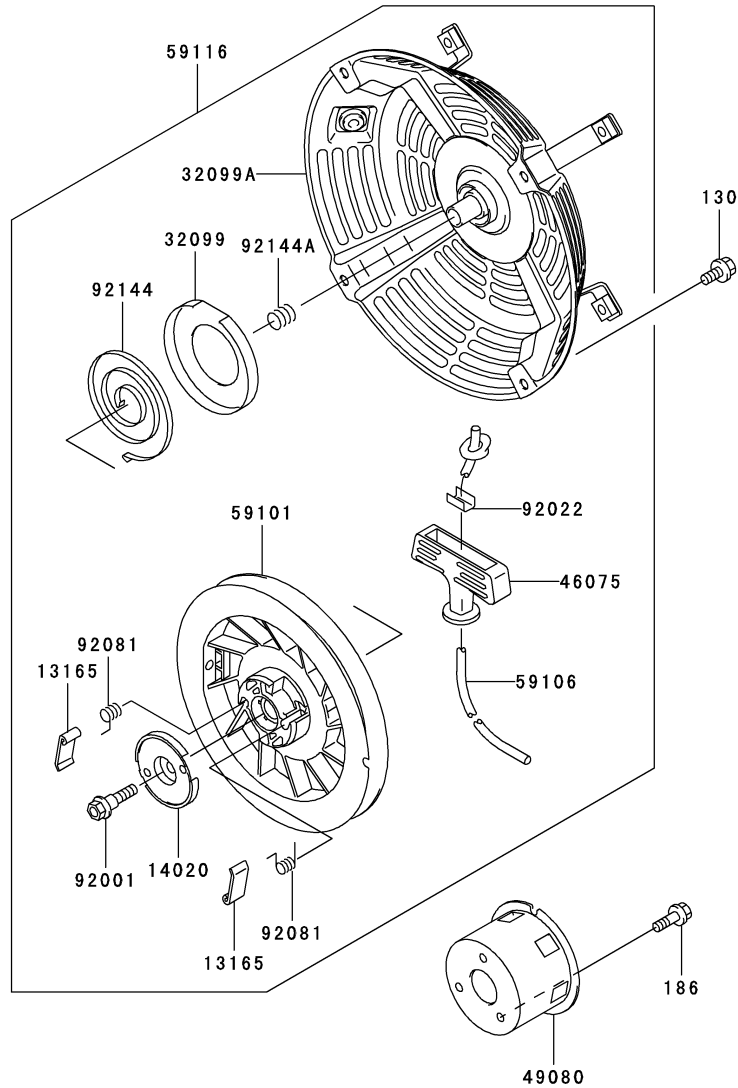
**FE290D-**  **G80**

**11**

This fig. covers:

**STARTER**

E0210-A238A



Ref. No.	Part No.	Description	Quantity	
			B	C
13165	13165-2073	PAWL,RECOIL STARTER	2	2
14020	14020-2094	RETAINER,RECOIL STARTER	1	1
32099	32099-2193	CASE,SPRING	1	1
32099A	32099-2355-YK	CASE,RECOIL STARTER	1	1
46075	46075-2092	GRIP,RECOIL STARTER	1	1
49080	49080-2154	PULLEY-STARTING	1	1
59101	59101-2092	REEL,RECOIL STARTER	1	1
59106	59106-2099	ROPE,4.5X1550	1	1
59116	59116-2344-YK	STARTER-ASSY-RECOIL	1	1
92001	92001-2027	BOLT	1	1
92022	92022-2248	WASHER	1	1
92081	92081-2021	SPRING	2	2
92144	92144-2055	SPRING,RECOIL	1	1
92144A	92144-2212	SPRING	1	1
130	130BA0612	BOLT-FLANGED,6X12	4	4
186	186AA0610	BOLT-UPSET-WP,6X10	3	3

This catalog covers:

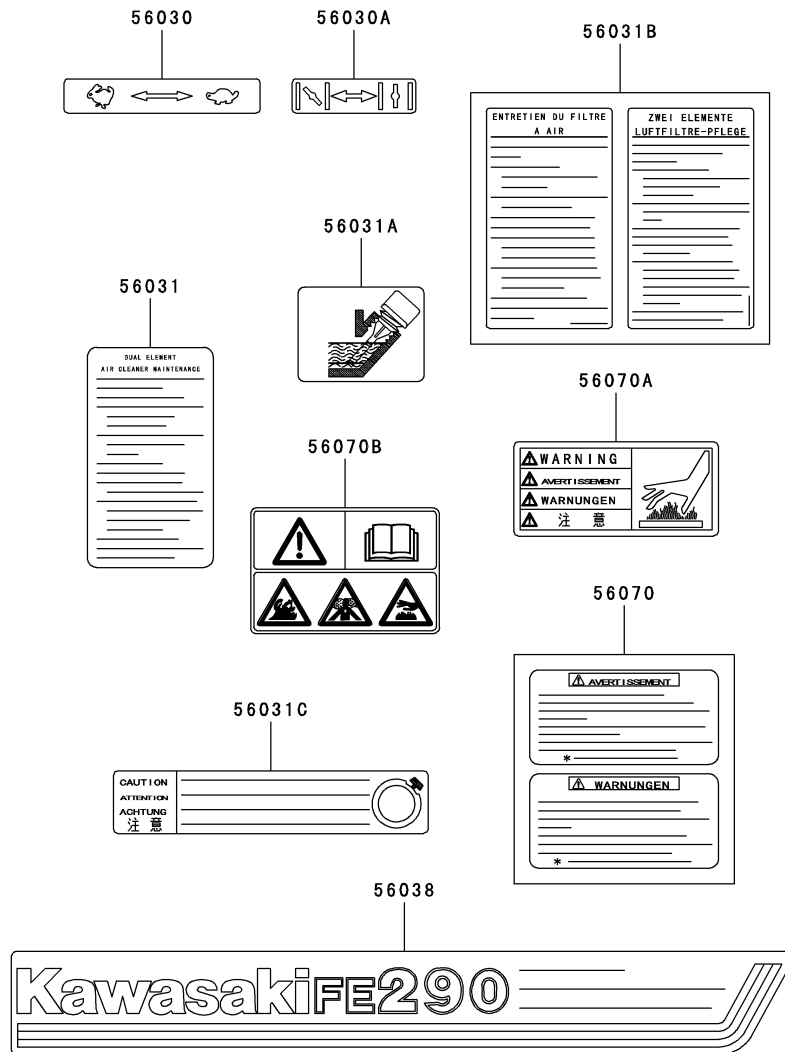
**FE290D-**  **G80**

**12**

This fig. covers:

**LABEL**

F0290-B046A



Ref. No.	Part No.	Description	Quantity	
			B	C
56030	56030-2385	LABEL,THROTTLE	1	1
56030A	56030-2386	LABEL,CHOKE	1	1
56031	56031-2387	LABEL-MANUAL	1	1
56031A	56031-2458	LABEL-MANUAL	1	1
56031B	56031-2461	LABEL-MANUAL	1	1
56031C	56031-2465	LABEL-MANUAL	1	1
56038	56038-2671	LABEL-BRAND	1	1
56070	56070-2003	LABEL-WARNING	1	1
56070A	56070-2010	LABEL-WARNING	1	1
56070B	56070-2021	LABEL-WARNING	1	1

This catalog covers:

**FE290D-** □ **G80**

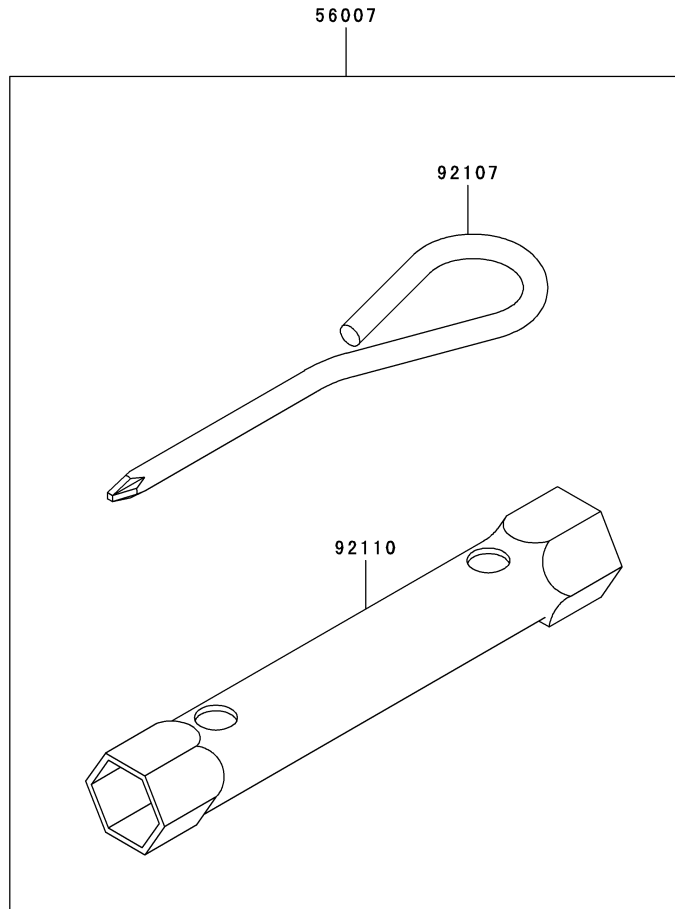
**13**

This fig. covers:

**TOOL**

F0300-A001A

Ref. No.	Part No.	Description	Quantity	
			B	C
56007	56007-2051	TOOLKIT	1	1
92107	92107-2057	TOOL-DRIVER	1	1
92110	92110-2051	TOOL-WRENCH,19X21	1	1



*This catalog covers:*

**FE290D-**  **G80**

*This fig. covers:*

---

## PART NAME INDEX

AIR-FILTER/MUFFLER.....	09
CARBURETOR.....	08
CONTROL-EQUIPMENT.....	07
COOLING-EQUIPMENT.....	05
CYLINDER/CRANKCASE .....	01
ELECTRIC-EQUIPMENT.....	06
FUEL-TANK/FUEL-VALVE.....	10
LABEL.....	12
LUBRICATION-EQUIPMENT.....	04
PISTON/CRANKSHAFT .....	02
STARTER.....	11
TOOL.....	13
VALVE/CAMSHAFT .....	03



This catalog covers:

**FE290D-**  **G80**

This fig. covers:

**NUMERICAL PARTS INDEX**

Part No.	Fig No.	Part No.	Fig No.	Part No.	Fig No.	Part No.	Fig No.	Part No.	Fig No.
11003-2089	04	13183-2295	04	221F0512	10	56030-2385	12	92043-2113	03
11004-2138	01	13183-2298	04	23013-2053	08	56030-2386	12	92045-2168	01
11008-2128	01	13183-2299	01	23013-2054	08	56031-2387	12	92049-2097	01
11008-2158	01	13183-2334	07	23013-2055	08	56031-2458	12	92049-2100	03
11008-2158	01	13183-2343	07	233AB0514	07	56031-2461	12	92049-2199	01
11009-2115	10	13183-2407	06	233C0514	07	56031-2465	12	92049-2220	01
11009-2175	04	13183-2483	05	233F0514	07	56038-2671	12	92055-1343	01
11009-2487	09	13236-2116	07	233F0514	07	56070-2003	12	92055-2063	04
11009-2827	08	13251-2077	02	26011-2266	06	56070-2010	12	92055-2072	02
11009-2828	04	13251-2079	02	26011-2359	06	56070-2021	12	92055-2185	04
11009-2829	01	13251-6034	02	27010-2066	06	59041-2082	06	92059-2011	06
11009-2876	10	13251-6034	02	311B0600	07	59051-2097	02	92063-2243	08
11009-2919	08	13251-6056	02	314G1600	06	59056-2993	02	92063-2325	08
11009-2925	09	13251-6056	02	317R0800	09	59066-2538-9H	05	92064-2083	08
11009-2928	08	132BA0612	04	318B0800	06	59101-2092	11	92066-2203	04
11009-2939	08	132G0612	04	32052-2199-9H	10	59106-2099	11	92066-2203	04
11010-2474-9H	09	132G0612	04	32099-2193	11	59116-2344-YK	11	92066-2211	04
11011-2247-9H	09	13320-2021	07	32099-2355-YK	11	59156-2230-9Y	09	92066-2253	04
11012-2282	07	14020-2094	11	39003-2076	07	59226-2229	07	92070-2077	06
11012-2322-9X	09	14024-2228	04	39076-2055	08	600A1000	04	92071-2008	06
11012-2357	09	14024-2234	06	39180-2643	07	702A081000	09	92071-2112	06
11012-2358	09	14090-2019-9H	09	410B0600	07	92001-2027	11	92071-2125	06
11013-2159	09	15003-2385	08	411B0600	07	92002-2053	02	92081-2021	11
11022-6001	01	15003-2647	08	42036-2060	07	92002-2053	02	92081-2036	10
11046-2143	07	16007-2052	03	46075-2092	11	92002-2269	07	92081-2104	07
11060-2122	01	16073-2154	08	46102-6004	02	92004-2083	01	92093-2094	09
12004-2084	03	16082-2062	04	461F0800	09	92009-1109	03	92107-2057	13
12005-2077	03	16115-2079	04	464H0800	06	92009-2021	10	92110-2051	13
12009-2060	03	16126-2107	01	482J0100	03	92009-2203	07	92141-2090	02
12011-2052	03	16142-2062	04	49002-2090	01	92009-2243	05	92143-2207	09
12016-2058	03	16146-2193	05	49002-2101	01	92009-2308	01	92144-2055	11
12020-2060	03	16154-2054	04	49015-6147	01	92009-2308	06	92144-2202	04
12032-2060	03	16171-2061	07	49016-2082	05	92009-2322	09	92144-2212	11
13001-2125	02	16171-2062	07	49019-2051	10	92009-2388	09	92144-2257	07
13002-2069	02	16183-2005	08	49019-2095	10	92015-1137	03	92144-2262	09
13008-6007	02	16184-2002	08	49064-2077	09	92015-1193	02	92144-2266	07
13025-2074	02	16185-2008	08	49065-2068	04	92015-1193	09	92144-2323	03
13029-2101	02	16186-2018	08	49069-2275	09	92015-2051	07	92144-2340	07
13031-2068	02	171BA0820	09	49078-2060	03	92015-2120	07	92145-2054	07
13042-6009	02	171G0820	09	49080-2154	11	92022-2103	07	92150-2145	01
130AA0508	04	171G0820	09	49089-2309-9H	05	92022-2116	02	92150-2197	05
130AA0508	09	172BA0675	08	49089-2317-9H	05	92022-2205	06	92150-2209	08
130AA0525	06	18077-2094	09	49089-2318-9H	05	92022-2248	11	92150-2252	01
130BA0610	06	186AA0610	11	49106-2514-9X	09	92022-2397	03	92150-2264	05
130BA0612	05	187BB0612	10	49106-2549-9X	09	92025-2168	02	92170-2016	06
130BA0612	07	187J0612	10	49107-2140-9H	09	92025-2169	02	92170-2017	06
130BA0612	09	187L0612	10	49110-2069	07	92025-2170	02	92170-2035	07
130BA0612	10	187L0612	10	49118-2121	03	92025-2171	02	92170-2042	10
130BA0612	11	21118-2088	03	49120-2217	01	92025-2172	02	92170-2082	10
130BA0620	04	21160-2051	06	49121-2193	08	92025-2173	02	92190-2042	05
130BA0816	09	21171-2207	06	51001-2222-9H	10	92025-2174	02	92190-2073	10
130BA0816	10	21187-2061	07	51023-2148	10	92025-2175	02	92190-2118	10
130BA0825	02	21193-2161	06	51036-2071	10	92025-2207	02	92200-2029	07
130CA0845	01	214AA0408	07	51048-2055	10	92026-2052	02	92200-2036	07
130T0845	01	214AA0420	07	510A5100	02	92026-2158	07	92200-2070	09
130T0845	01	214B0420	07	510A5100	06	92036-008	02	99996-2077	03
13107-2088	02	214B0422	07	511A0735	02	92036-023	01	99996-2077	03
13116-2054	03	221AB0512	10	52005-2100	10	92037-2006	06		
13165-2073	11	221C0512	10	554A0600	07	92043-1037	01		
13168-2314	07	221F0512	10	56007-2051	13	92043-1263	01		