

This catalog covers:  
**FH430V-□G80**

This fig. covers:  
**TITLE**

# PARTS CATALOG

## 4-STROKE ENGINE

### FH430V

PRODUCT CODE	NOTE
FH430V-AG80	MOWER (RM86)
FH430V-BG80	
FH430V-CG80	

# PARTS CATALOG INTRODUCTION

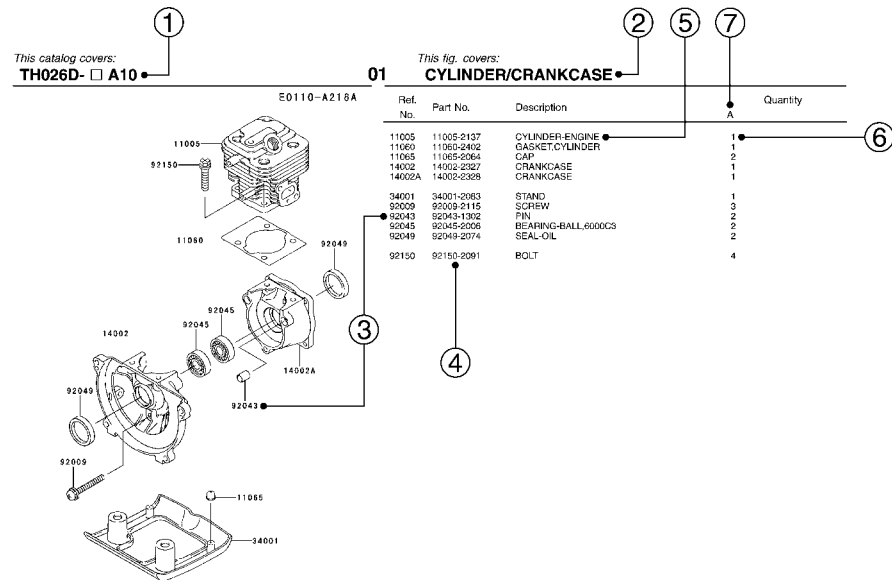
This parts catalog lists parts and sub-assemblies provided as service parts.

When it becomes necessary to replace parts, always use KAWASAKI GENUINE PARTS which have passed strict inspection which guarantees quality and performance.

## 1. HOW TO ORDER PARTS

- When ordering the parts, be sure to use the parts catalog corresponding to the product code. Check the product revision codes on the product and the catalog.  
 Product Code (example) : FA130D-AA00  
└──────────────────┘  
 Product Revision Code
- Specify the part code (all digits) exactly as listed in this catalog on your parts order.
- The parts not shown in the illustrations of this catalog are not sold separately; only the complete units or next higher assemblies illustrated are supplied as the service parts.

## 2. EXPLANATION OF PARTS CATALOG FORMAT



### 1) Product Code

This code describes the product code covered by this catalog. The product revision code, which is a part of the product code, is omitted.

### 2) Part Group Title

This title is the representative name for the group of parts illustrated on the page.

### 3) Reference Number

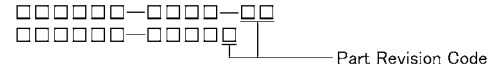
The reference numbers are shown on the illustration and the list as the link between them.

## 4) Part Number

This is the key of your parts ordering.

Three kinds of part number are used in this catalog.

### a. Structure 1

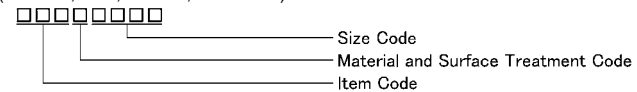


### b. Structure 2



### c. Standard Hardware Number

(for bolts, nuts, washer, or the like)



## 5) Description and Additional Information

The part name, the location, the size, and the serial number as additional information, etc. are described here. Use them to find out and check the part required.

When a part number is changed without change of the product revision code and the changed parts are not interchangeable, the serial number of the product is noted as follows;

- (                    - FA130 - 100001 ) : Affected units are from beginning of the product of the product code up to and including this serial number.
- ( FA130 - 100002   -                    ) : Affected units are from this serial number and above.
- ( FA130 - 100002   - FA130 - 110001 ) : Affected units are in this serial number range.

## 6) Quantity

The figure shows quantity of the part required at the indicated position on the illustration and for the specified product revision code.

The asterisk (\*) on this column means the part can be used as the substitute on the product and is supplied until the stock is exhausted.

Note:Some small parts will be supplied by units.

Example: If six (6) bolts are ordered and the minimum quantity per unit is five (5), two (2), units of the bolt will be delivered.

## 7) Product Revision Code

This Code indicates an important change which affects the service parts interchangeability.

## 3. ABBREVIATIONS

#.....Number	FR.....Front	RH.....Right Hand
&.....And	G.....Gram	RPM.....Revolutions Per Minute
(+).....Plus	HEX.....Hexagonal	RR.....Rear
(-).....Minus	ID=.....Inside Diameter	STD.....Standard
2ND.....Second	IN.....Inch	T.....Teeth
3RD.....Third	L=.....Length	T=.....Thickness
4TH.....Fourth	LH.....Left Hand	U/S.....Under Size
A.....Ampere	LWR.....Lower	UPP.....Upper
AR.....As Required	MM.....Millimeter	V.....Volt
ASSY.....Assembly	O/S.....Over Size	W.....Watt
CNT.....Center	OD=.....Outside Diameter	
COMP.....Complete	REF.....Reference	

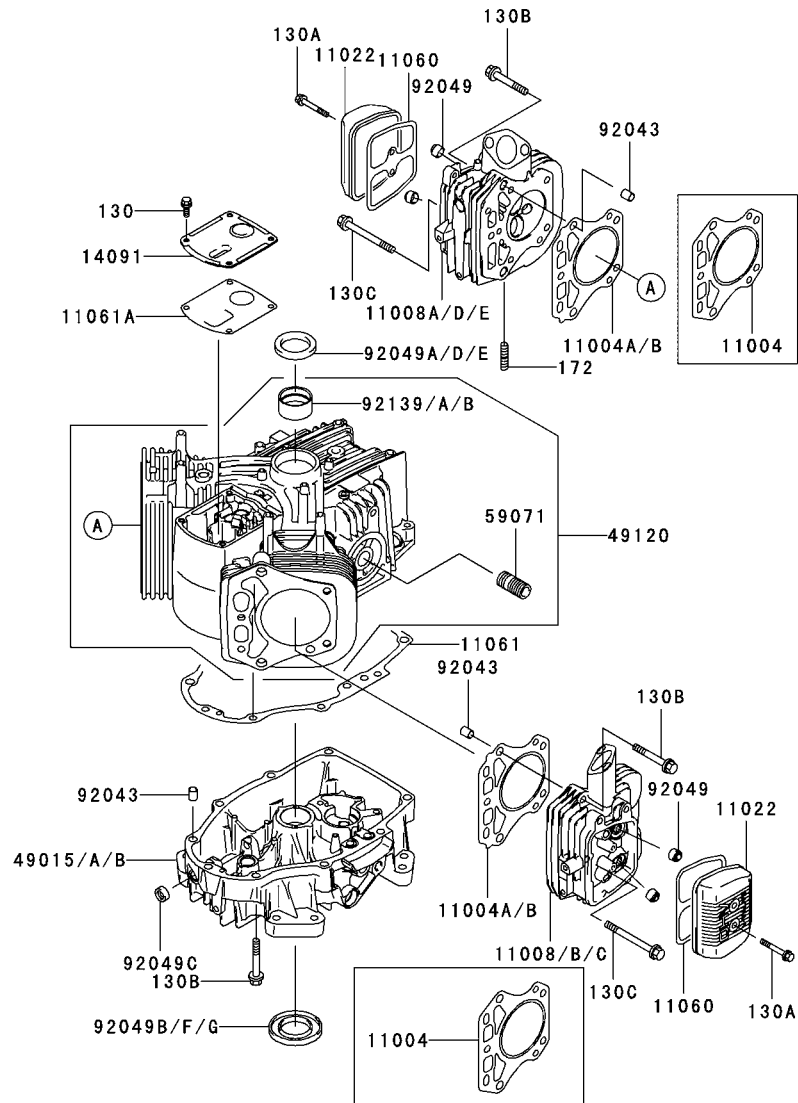
This catalog covers:

FH430V- □ G80

This fig. covers:

# 01 CYLINDER/CRANKCASE

E0110-A465C



Ref. No.	Part No.	Description	Quantity		
			A	B	C
11004	11004-7008	GASKET-HEAD	*		
11004A	11004-7018	GASKET-HEAD		2	2
11004B	11004-7018	GASKET-HEAD	2		
11008	11008-7011	HEAD-COMP-CYLINDER,#2	*		
11008A	11008-7017	HEAD-COMP-CYLINDER,#1	*		
11008B	11008-7021	HEAD-COMP-CYLINDER,#2		1	1
11008C	11008-7021	HEAD-COMP-CYLINDER,#2	1		
11008D	11008-7022	HEAD-COMP-CYLINDER,#1		1	1
11008E	11008-7022	HEAD-COMP-CYLINDER,#1	1		
11022	11022-7003	CASE-ROCKER	2	2	2
11060	11060-7001	GASKET,ROCKER CASE	2	2	2
11061	11061-7007	GASKET,COVER-CRANKCASE	1	1	1
11061A	11061-7008	GASKET,BREATHER	1	1	1
14091	14091-7007	COVER	1	1	1
49015	49015-7009	COVER-CRANKCASE	*		
49015A	49015-7032	COVER-CRANKCASE		1	1
49015B	49015-7032	COVER-CRANKCASE	1		
49120	49120-7015	CRANKCASE-COMP	1	1	1
59071	59071-2079	JOINT	1	1	1
92043	92043-7001	PIN	6	6	6
92049	92049-7001	SEAL-OIL,RVC2 6X11X10.2	4	4	4
92049A	92049-7002	SEAL-OIL,35-48-8 TC	*		
92049B	92049-7004	SEAL-OIL,35-62-8 TC	*		
92049C	92049-7005	SEAL-OIL,SO 8X14X5 HS	1	1	1
92049D	92049-7010	SEAL-OIL,SD 35X48X8 R HS		1	1
92049E	92049-7010	SEAL-OIL,SD 35X48X8 R HS	1		
92049F	92049-7011	SEAL-OIL,SD 35X62X8 L HS		1	1
92049G	92049-7011	SEAL-OIL,SD 35X62X8 L HS	1		
92139	92139-7002	BUSHING	*		
92139A	92139-7008	BUSHING		1	1
92139B	92139-7008	BUSHING	1		
130	130B0612	BOLT-FLANGED	4	4	4
130A	130B0640	BOLT-FLANGED	4	4	4
130B	130T0850	BOLT-FLANGED	17	17	17
130C	130T0875	BOLT-FLANGED	2	2	2
172	172G0818	BOLT-STUD	4	4	4

This catalog covers:

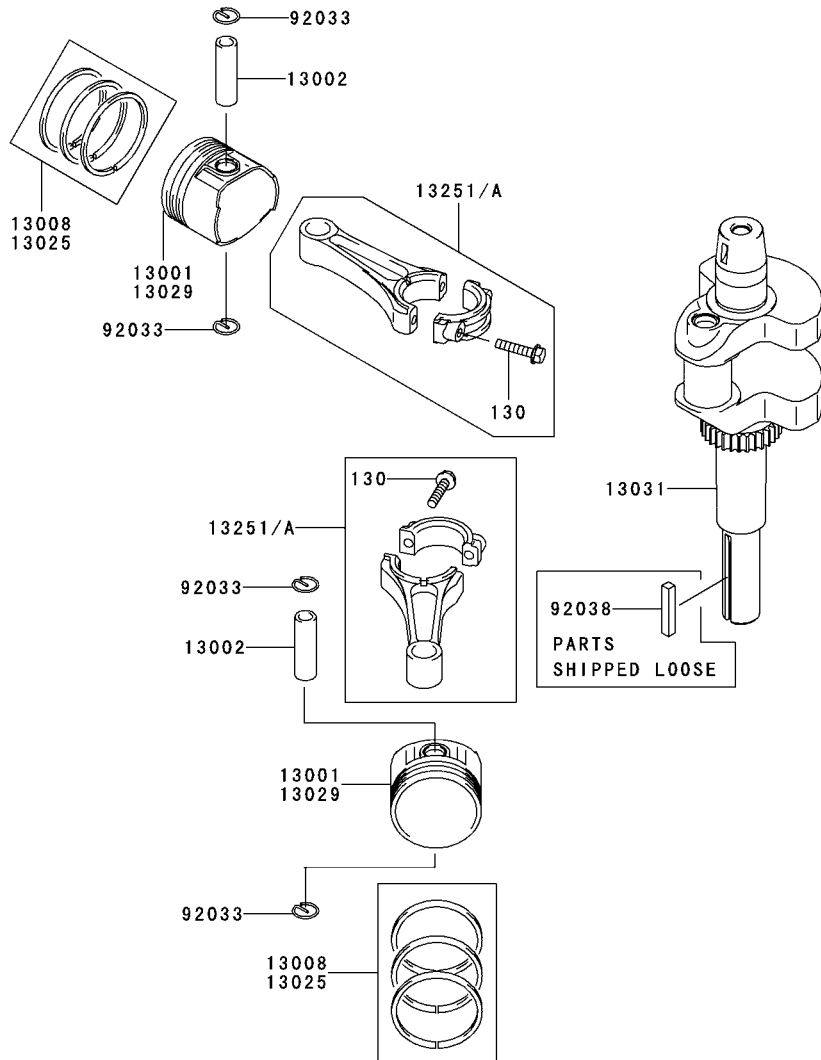
**FH430V- □ G80**

**02**

This fig. covers:

**PISTON/CRANKSHAFT**

E0120-A228A



Ref. No.	Part No.	Description	Quantity		
			A	B	C
13001	13001-7009	PISTON-ENGINE	2	2	2
13002	13002-7001	PIN-PISTON	2	2	2
13008	13008-7001	RING-SET-PISTON	2	2	2
13025	13025-7003	RING-SET-PISTON L,0.50	AR	AR	AR
13029	13029-7005	PISTON-ENGINE L,0.50	AR	AR	AR
13031	13031-7033	CRANKSHAFT-COMP	1	1	1
13251	13251-7007	ROD-ASSY-CONNECTING	2	2	2
13251A	13251-7008	ROD-ASSY-CONNECTING,U/S=0.50	2	2	2
92033	92033-7005	RING-SNAP	4	4	4
92038	92038-2101	KEY	1	1	1
130	130G0630	BOLT-FLANGED	4	4	4

This catalog covers:

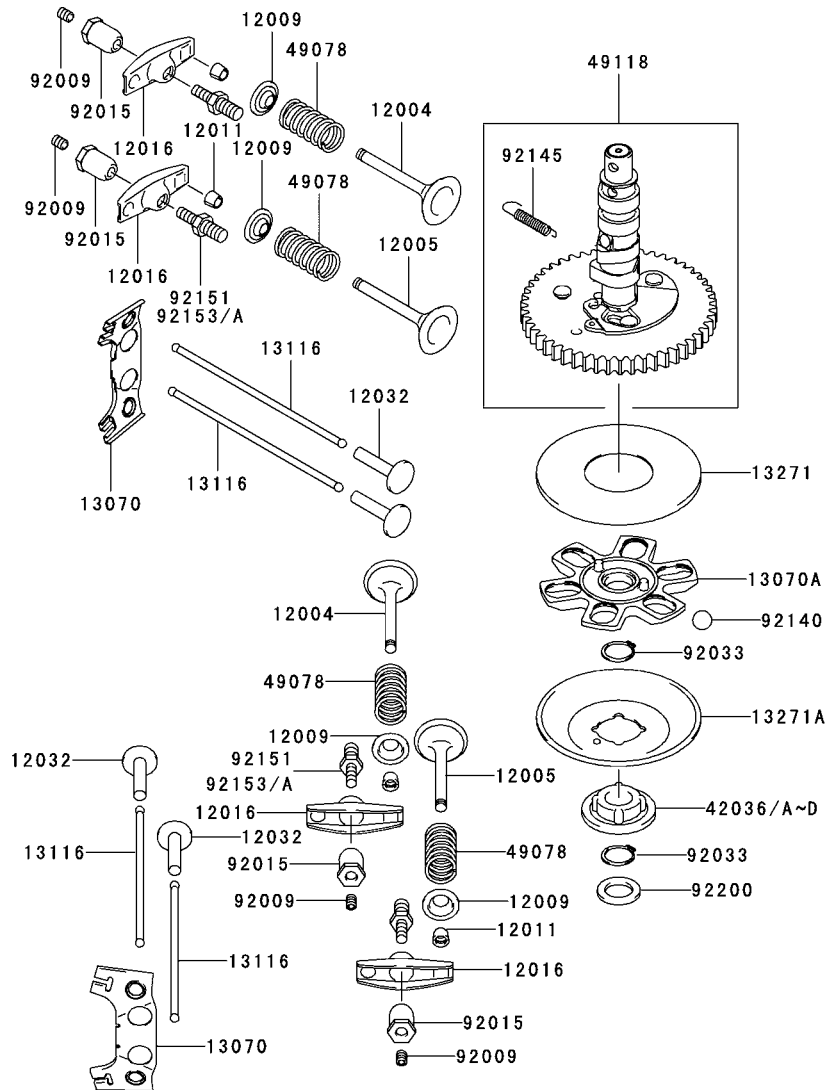
**FH430V- □ G80**

**03**

This fig. covers:

**VALVE/CAMSHAFT**

E0130-A110F



Ref. No.	Part No.	Description	Quantity		
			A	B	C
12004	12004-7003	VALVE-INTAKE	2	2	2
12005	12005-7003	VALVE-EXHAUST	2	2	2
12009	12009-7001	RETAINER-VALVE SPRING	4	4	4
12011	12011-2056	COLLET	8	8	8
12016	12016-7001	ARM-ROCKER	4	4	4
12032	12032-7001	TAPPET	4	4	4
13070	13070-7001	GUIDE	2	2	2
13070A	13070-7004	GUIDE	1	1	1
13116	13116-2057	ROD-PUSH	4	4	4
13271	13271-7007	PLATE	1	1	1
13271A	13271-7021	PLATE,GOVERNOR	1	1	1
42036	42036-7001	SLEEVE	*		
42036A	42036-7009	SLEEVE		*	
42036B	42036-7009	SLEEVE	*		
42036C	42036-7010	SLEEVE			1
42036D	42036-7010	SLEEVE	1	1	
49078	49078-7001	SPRING-ENGINE VALVE	4	4	4
49118	49118-7009	CAMSHAFT-COMP	1	1	1
92009	92009-2341	SCREW	4	4	4
92015	92015-2253	NUT	4	4	4
92033	92033-7001	RING-SNAP	2	2	2
92140	92140-7002	BALL	6	6	6
92145	92145-7001	SPRING	1	1	1
92151	92151-7019	BOLT	*		
92153	92153-7019	BOLT		4	4
92153A	92153-7019	BOLT	4		
92200	92200-7001	WASHER	1	1	1

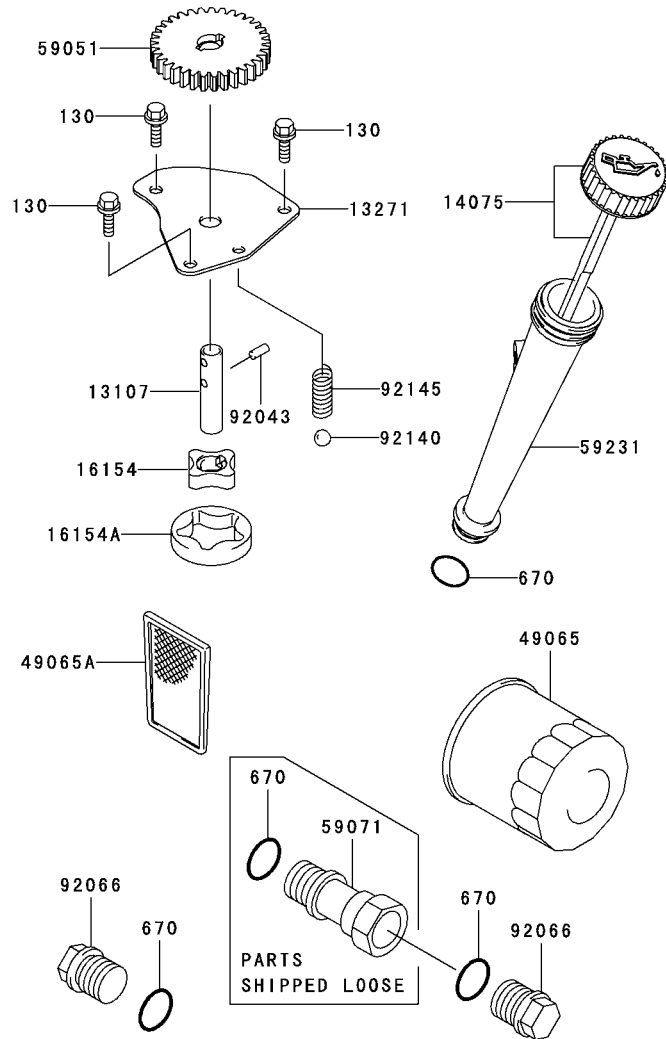
This catalog covers:

**FH430V- □ G80**

This fig. covers:

**04 LUBRICATION-EQUIPMENT**

E0140-A270A



Ref. No.	Part No.	Description	Quantity		
			A	B	C
13107	13107-7009	SHAFT	1	1	1
13271	13271-7017	PLATE	1	1	1
14075	14075-7009	CAP-ASSY	1	1	1
16154	16154-2053	ROTOR-PUMP,IN	1	1	1
16154A	16154-2054	ROTOR-PUMP,OUT	1	1	1
49065	49065-2078	FILTER-OIL	1	1	1
49065A	49065-7004	FILTER-OIL	1	1	1
59051	59051-7011	GEAR-SPUR	1	1	1
59071	59071-7003	JOINT	1	1	1
59231	59231-7003	FILLER	1	1	1
92043	92043-7003	PIN	2	2	2
92066	92066-7003	PLUG	2	2	2
92140	92140-7003	BALL	1	1	1
92145	92145-7002	SPRING	1	1	1
130	130B0612	BOLT-FLANGED	3	3	3
670	670D2016	O RING,16MM	4	4	4

This catalog covers:

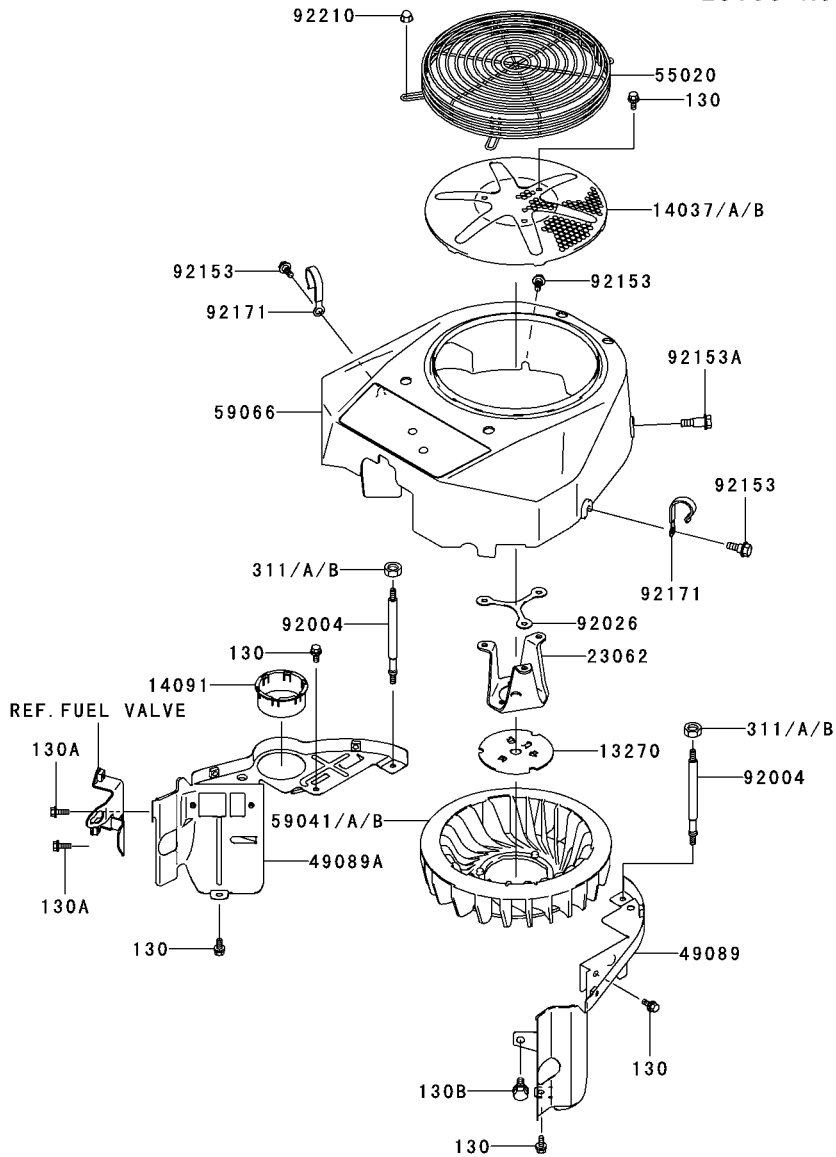
FH430V- □ G80

05

This fig. covers:

COOLING-EQUIPMENT

E0150-A535B



Ref. No.	Part No.	Description	Quantity		
			A	B	C
13270	13270-7007	PLATE	1	1	1
14037	14037-7010	SCREEN	*		
14037A	14037-7020-9H	SCREEN		1	1
14037B	14037-7020-9H	SCREEN	1		
14091	14091-7008	COVER	1	1	1
23062	23062-7010	BRACKET-COMP	1	1	1
49089	49089-7023	SHROUD-ENGINE,#2CYLINDER	1	1	1
49089A	49089-7026	SHROUD-ENGINE,#1CYLINDER	1	1	1
55020	55020-7004	GUARD	1	1	1
59041	59041-7001	FAN	*		
59041A	59041-7010	FAN		1	1
59041B	59041-7010	FAN	1		
59066	59066-7009	HOUSING-FAN	1	1	1
92004	92004-7007	STUD	2	2	2
92026	92026-7007	SPACER	1	1	1
92153	92153-7007	BOLT	3	3	3
92153A	92153-7008	BOLT	1	1	1
92171	92171-7005	CLAMP	2	2	2
92210	92210-0003	NUT	4	4	4
130	130B0612	BOLT-FLANGED	7	7	7
130A	130B0616	BOLT-FLANGED	2	2	2
130B	130B0816	BOLT-FLANGED	1	1	1
311	311C0600	NUT-HEX	*		
311A	311F0600	NUT-HEX		2	2
311B	311F0600	NUT-HEX	2		

This catalog covers:

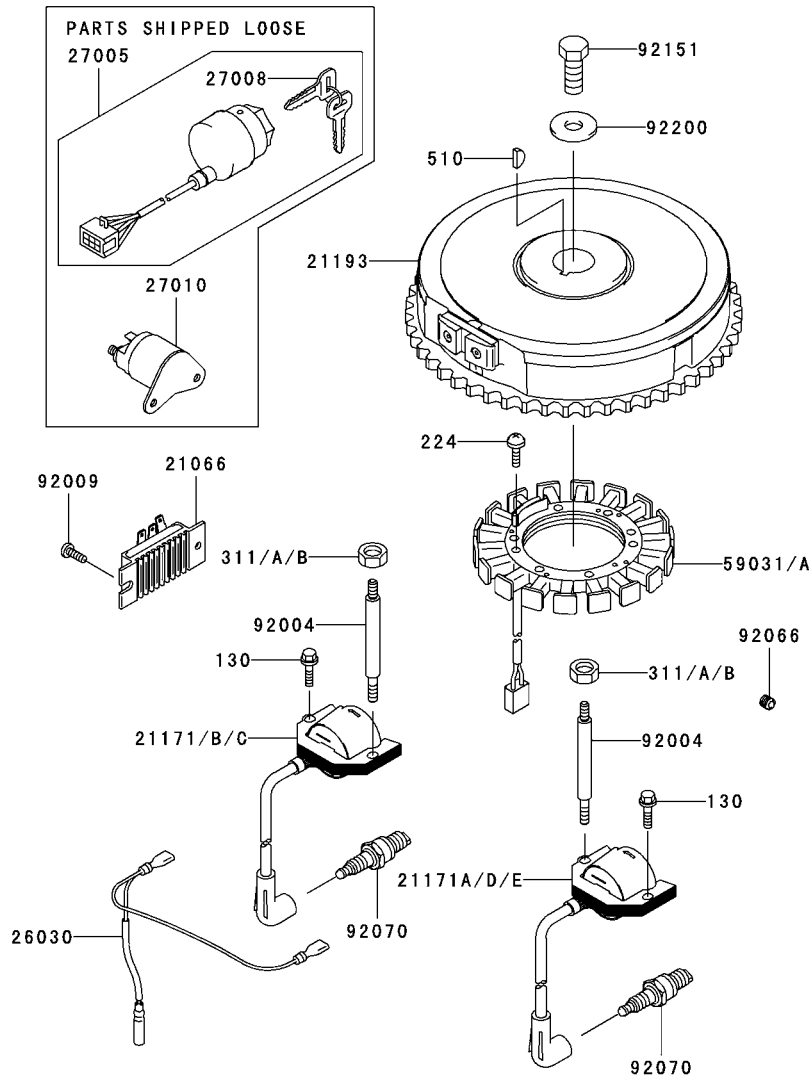
FH430V- □ G80

06

This fig. covers:

ELECTRIC-EQUIPMENT

E0160-A882B



Ref. No.	Part No.	Description	Quantity		
			A	B	C
21066	21066-7011	REGULATOR-VOLTAGE	1	1	1
21171	21171-7007	COIL-ASSY-IGNITION	*		
21171A	21171-7008	COIL-ASSY-IGNITION	*		
21171B	21171-7013	COIL-ASSY-IGNITION		1	1
21171C	21171-7013	COIL-ASSY-IGNITION	1		
21171D	21171-7014	COIL-ASSY-IGNITION		1	1
21171E	21171-7014	COIL-ASSY-IGNITION	1		
21193	21193-7016	FLYWHEEL-ASSY	1	1	1
26030	26030-7001	HARNESS	1	1	1
27005	27005-2056	SWITCH-ASSY-IGNITION	1	1	1
27008	27008-2055	KEY-LOCK	2	2	2
27010	27010-2154	SWITCH	1	1	1
59031	59031-7001	COIL-CHARGING	*	*	*
59031A	59031-7009	COIL-CHARGING	1	1	1
92004	92004-7008	STUD	2	2	2
92009	92009-2308	SCREW	2	2	2
92066	92066-7002	PLUG	1	1	1
92070	92070-7003	PLUG-SPARK,RCJ8Y,SOLID	2	2	2
92151	92151-2097	BOLT,12X30	1	1	1
92200	92200-7002	WASHER	1	1	1
130	130B0620	BOLT-FLANGED	2	2	2
224	224B0520	SCREW-PAN-WP-CROS	4	4	4
311	311C0600	NUT-HEX	*		
311A	311F0600	NUT-HEX		2	2
311B	311F0600	NUT-HEX	2		
510	510A5100	KEY-WOODRUFF	1	1	1



This catalog covers:

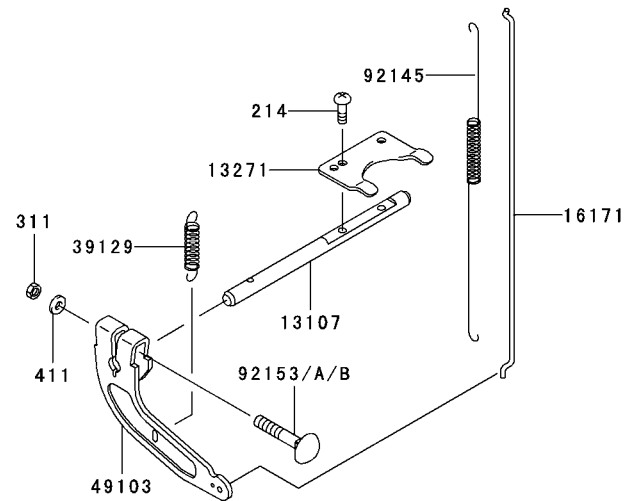
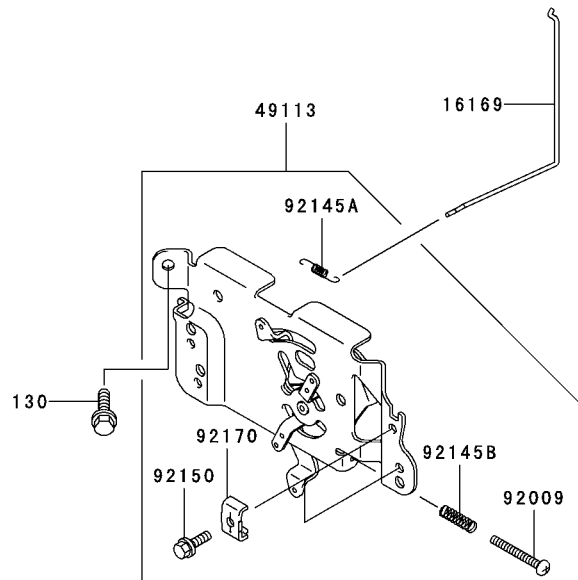
FH430V- □ G80

07

This fig. covers:

CONTROL-EQUIPMENT

E0170-A422C



Ref. No.	Part No.	Description	Quantity		
			A	B	C
13107	13107-7010	SHAFT	1	1	1
13271	13271-7018	PLATE	1	1	1
16169	16169-7012	LINK-CHOKE	1	1	1
16171	16171-7007	LINK	1	1	1
39129	39129-7003	SPRING-GOVERNOR	1	1	1
49103	49103-7004	ARM-GOVERNOR	1	1	1
49113	49113-7011	PANEL-COMP-CONTROL	1	1	1
92009	92009-7007	SCREW,4X35	1	1	1
92145	92145-7003	SPRING	1	1	1
92145A	92145-7004	SPRING	1	1	1
92145B	92145-7005	SPRING	1	1	1
92150	92150-2182	BOLT,5X18	2	2	2
92153	92153-7005	BOLT,6X35	*		
92153A	92153-7033	BOLT,6X35		1	1
92153B	92153-7033	BOLT,6X35	1		
92170	92170-7001	CLAMP	2	2	2
130	130B0612	BOLT-FLANGED	2	2	2
214	214B0408	SCREW-PAN+-	2	2	2
311	311B0600	NUT-HEX	1	1	1
411	411B0600	WASHER-PLAIN	1	1	1

This catalog covers:

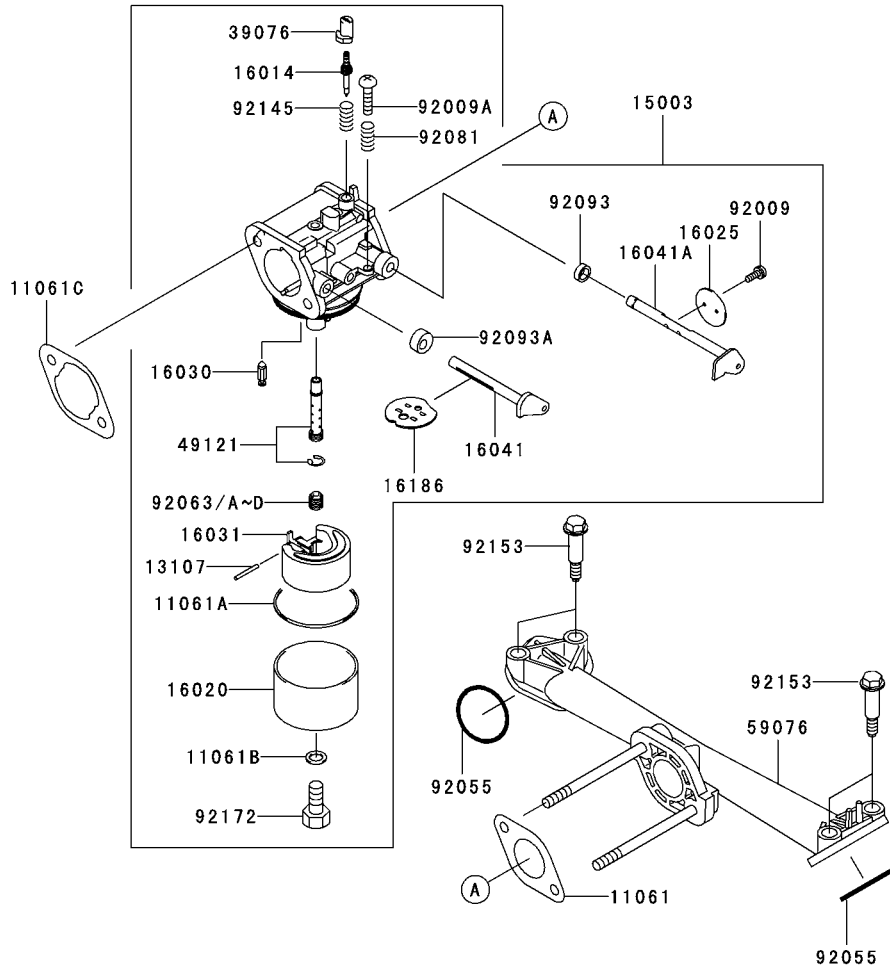
**FH430V- □ G80**

**08**

This fig. covers:

**CARBURETOR**

E0180-A631A



Ref. No.	Part No.	Description	Quantity		
			A	B	C
11061	11061-7004	GASKET,INSULATOR	1	1	1
11061A	11061-7009	GASKET,CHAMBER	1	1	1
11061B	11061-7010	GASKET,SCREW	1	1	1
11061C	11061-7018	GASKET,AIR CLEANER	1	1	1
13107	13107-7018	SHAFT	1	1	1
15003	15003-7061	CARBURETOR-ASSY	1	1	1
16014	16014-7002	SCREW-PILOT AIR	1	1	1
16020	16020-7003	CHAMBER-FLOAT	1	1	1
16025	16025-7006	VALVE-THROTTLE	1	1	1
16030	16030-7003	VALVE-FLOAT	1	1	1
16031	16031-7002	FLOAT	1	1	1
16041	16041-7016	SHAFT-CARBURETOR,CHOKE	1	1	1
16041A	16041-7018	SHAFT-CARBURETOR,THROTTLE	1	1	1
16186	16186-7002	VALVE-ASSY-CHOKE	1	1	1
39076	39076-7001	LIMITER	1	1	1
49121	49121-7001	NOZZLE-MAIN	1	1	1
59076	59076-7005	MANIFOLD-INTAKE	1	1	1
92009	92009-2083	SCREW	2	2	2
92009A	92009-2349	SCREW	1	1	1
92055	92055-7007	RING-O,ID=31	2	2	2
92063	92063-7026	JET-MAIN,#88	1	1	1
92063A	92063-7028	JET-MAIN,#85		AR	AR
92063B	92063-7028	JET-MAIN,#85	AR		
92063C	92063-7029	JET-MAIN,#82		AR	AR
92063D	92063-7029	JET-MAIN,#82	AR		
92081	92081-2234	SPRING	1	1	1
92093	92093-2100	SEAL	1	1	1
92093A	92093-7003	SEAL	1	1	1
92145	92145-7015	SPRING	1	1	1
92153	92153-7009	BOLT	4	4	4
92172	92172-7002	SCREW	1	1	1

This catalog covers:

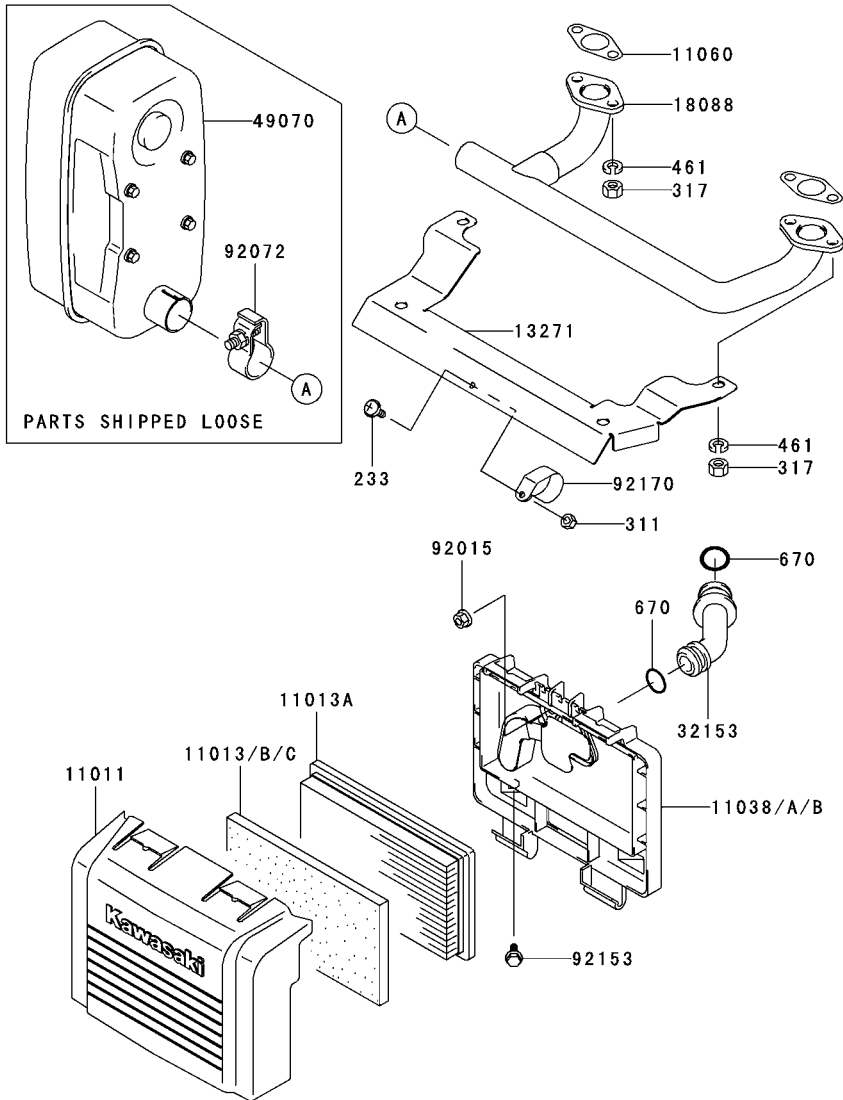
**FH430V-** □ **G80**

**09**

This fig. covers:

**AIR-FILTER/MUFFLER**

E0190-A643B



Ref. No.	Part No.	Description	Quantity		
			A	B	C
11011	11011-7012	CASE-AIR FILTER,UPPER	1	1	1
11013	11013-7016	ELEMENT-AIR FILTER	*		
11013A	11013-7017	ELEMENT-AIR FILTER	1	1	1
11013B	11013-7034	ELEMENT-AIR FILTER		1	1
11013C	11013-7034	ELEMENT-AIR FILTER	1		
11038	11038-7007	CASE-ASSY-AIR FILTER,LOWER	*		
11038A	11038-7010	CASE-ASSY-AIR FILTER,LOWER		1	1
11038B	11038-7010	CASE-ASSY-AIR FILTER,LOWER	1		
11060	11060-7021	GASKET,MUFFLER	2	2	2
13271	13271-7023	PLATE	1	1	1
18088	18088-7002	PIPE-EXHAUST	1	1	1
32153	32153-7008	PIPE,BREATHER	1	1	1
49070	49070-7008	MUFFLER-COMP	1	1	1
92015	92015-1193	NUT	2	2	2
92072	92072-7009	BAND	1	1	1
92153	92153-7007	BOLT	2	2	2
92170	92170-7002	CLAMP	1	1	1
233	233B0416	SCREW-PAN-WP+-	1	1	1
311	311B0400	NUT-HEX	1	1	1
317	317R0800	NUT-HEX-SMALL	4	4	4
461	461F0800	WASHER-SPRING	4	4	4
670	670B2010	O RING,10MM	2	2	2

This catalog covers:

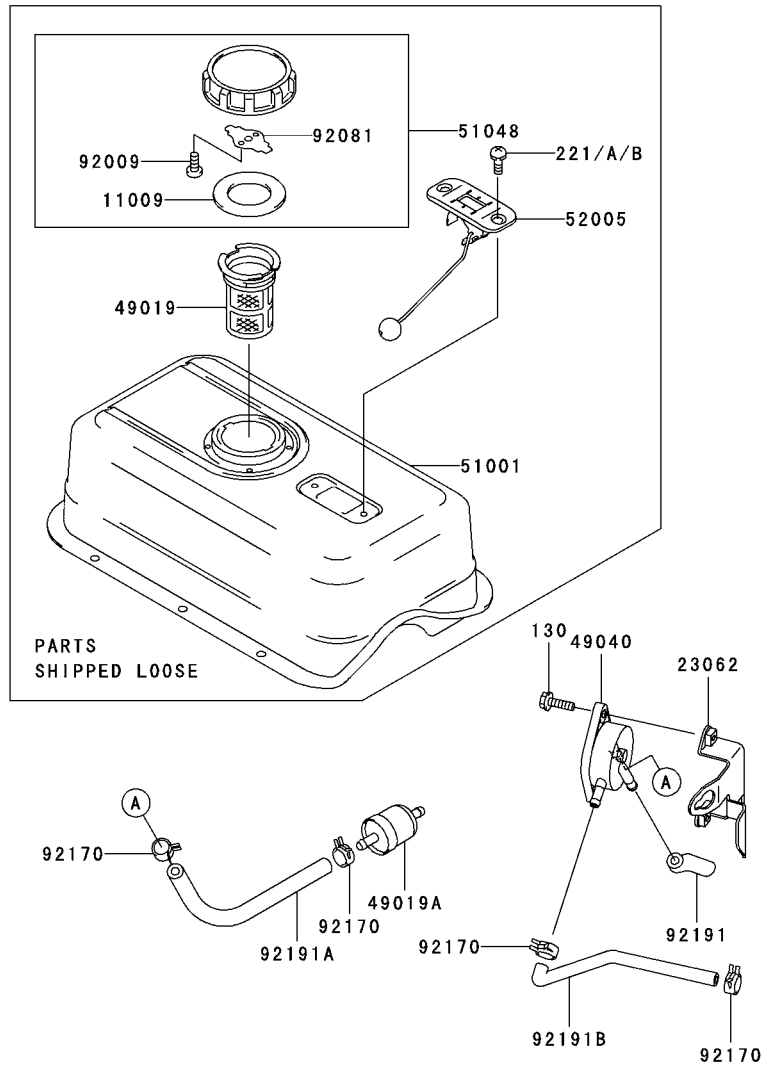
FH430V- □ G80

10

This fig. covers:

FUEL-TANK/FUEL-VALVE

E0200-A408B



Ref. No.	Part No.	Description	Quantity		
			A	B	C
11009	11009-2115	GASKET	1	1	1
23062	23062-7004-9H	BRACKET-COMP	1	1	1
49019	49019-2107	FILTER-FUEL	1	1	1
49019A	49019-7001	FILTER-FUEL	1	1	1
49040	49040-7001	PUMP-FUEL	1	1	1
51001	51001-2258-9H	TANK-COMP-FUEL	1	1	1
51048	51048-2052	CAP-ASSY-TANK	1	1	1
52005	52005-2100	GAUGE	1	1	1
92009	92009-2021	SCREW	2	2	2
92081	92081-2036	SPRING	1	1	1
92170	92170-2088	CLAMP	4	4	4
92191	92191-7002	TUBE	1	1	1
92191A	92191-7003	TUBE,6.35X12.7X160	1	1	1
92191B	92191-7004	TUBE	1	1	1
130	130B0620	BOLT-FLANGED	2	2	2
221	221C0512	SCREW-CSK-CROSS	*		
221A	221F0512	SCREW-CSK-CROSS		2	2
221B	221F0512	SCREW-CSK-CROSS	2		

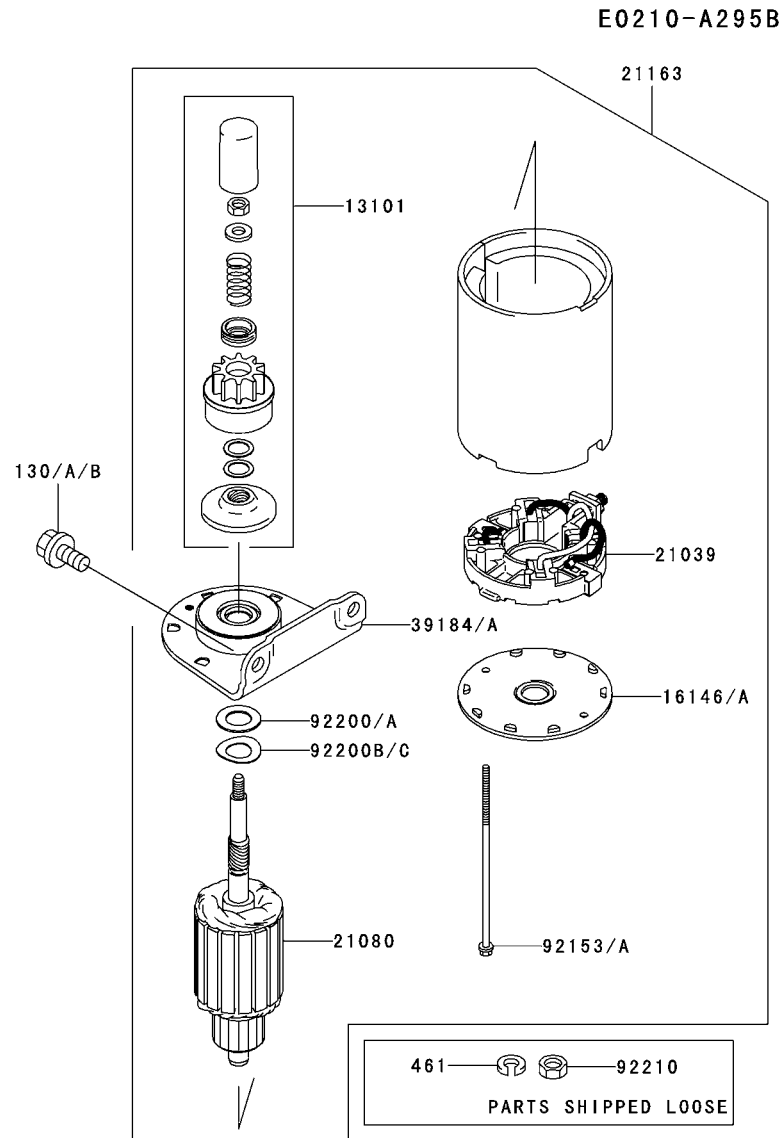
This catalog covers:

**FH430V- □ G80**

**11**

This fig. covers:

**STARTER**



Ref. No.	Part No.	Description	Quantity		
			A	B	C
13101	13101-7002	GEAR-ASSY	1	1	1
16146	16146-7013	COVER-ASSY		1	1
16146A	16146-7013	COVER-ASSY	1		
21039	21039-7002	BRUSH	1	1	1
21080	21080-7003	ARMATURE	1	1	1
21163	21163-7007	STARTER-ELECTRIC	1	1	1
39184	39184-7008	BRACKET-ASSY		1	1
39184A	39184-7008	BRACKET-ASSY	1		
92153	92153-7034	BOLT		2	2
92153A	92153-7034	BOLT	2		
92200	92200-7023	WASHER		1	1
92200A	92200-7023	WASHER	1		
92200B	92200-7024	WASHER		1	1
92200C	92200-7024	WASHER	1		
92210	92210-7013	NUT	1	1	1
130	130B0816	BOLT-FLANGED	*		
130A	130D0814	BOLT-FLANGED		2	2
130B	130D0814	BOLT-FLANGED	2		
461	461F0600	WASHER-SPRING	1	1	1

This catalog covers:

**FH430V- □ G80**

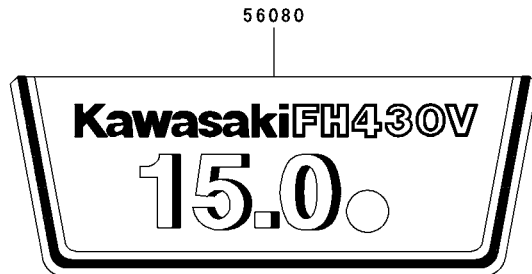
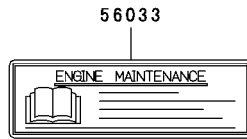
**12**

This fig. covers:

**LABEL**

F0290-A924A

Ref. No.	Part No.	Description	Quantity		
			A	B	C
56033	56033-7001	LABEL-MANUAL	1	1	1
56070	56070-7001	LABEL-WARNING	1	1	1
56080	56080-7016	LABEL-BRAND	1	1	1



This catalog covers:

**FH430V- □ G80**

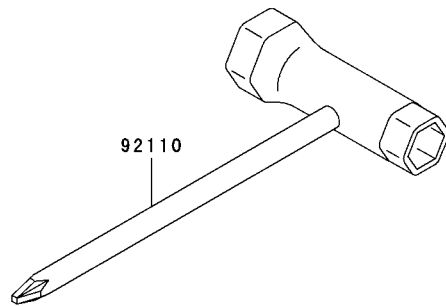
**13**

This fig. covers:

**TOOL**

F0300-A038A

Ref. No.	Part No.	Description	Quantity		
			A	B	C
92110	92110-2106	TOOL-WRENCH,13X19,+	1	1	1



*This catalog covers:*

**FH430V-**  **G80**

*This fig. covers:*

---

## PART NAME INDEX

AIR-FILTER/MUFFLER.....	09
CARBURETOR.....	08
CONTROL-EQUIPMENT.....	07
COOLING-EQUIPMENT.....	05
CYLINDER/CRANKCASE .....	01
ELECTRIC-EQUIPMENT.....	06
FUEL-TANK/FUEL-VALVE.....	10
LABEL.....	12
LUBRICATION-EQUIPMENT.....	04
PISTON/CRANKSHAFT .....	02
STARTER.....	11
TOOL.....	13
VALVE/CAMSHAFT .....	03



This catalog covers:

**FH430V- □ G80**

This fig. covers:

**NUMERICAL PARTS INDEX**

Part No.	Fig No.	Part No.	Fig No.	Part No.	Fig No.	Part No.	Fig No.	Part No.	Fig No.
11004-7008	01	13116-2057	03	311F0600	05	92009-2341	03	92170-7001	07
11004-7018	01	13251-7007	02	311F0600	06	92009-2349	08	92170-7002	09
11004-7018	01	13251-7008	02	311F0600	06	92009-7007	07	92171-7005	05
11008-7011	01	13270-7007	05	317R0800	09	92015-1193	09	92172-7002	08
11008-7017	01	13271-7007	03	32153-7008	09	92015-2253	03	92191-7002	10
11008-7021	01	13271-7017	04	39076-7001	08	92026-7007	05	92191-7003	10
11008-7021	01	13271-7018	07	39129-7003	07	92033-7001	03	92191-7004	10
11008-7022	01	13271-7021	03	39184-7008	11	92033-7005	02	92200-7001	03
11008-7022	01	13271-7023	09	39184-7008	11	92038-2101	02	92200-7002	06
11009-2115	10	14037-7010	05	411B0600	07	92043-7001	01	92200-7023	11
11011-7012	09	14037-7020-9H	05	42036-7001	03	92043-7003	04	92200-7024	11
11013-7016	09	14037-7020-9H	05	42036-7009	03	92049-7001	01	92200-7024	11
11013-7017	09	14075-7009	04	42036-7009	03	92049-7002	01	92200-7024	11
11013-7034	09	14091-7007	01	42036-7010	03	92049-7004	01	92210-0003	05
11013-7034	09	14091-7008	05	42036-7010	03	92049-7005	01	92210-7013	11
11022-7003	01	15003-7061	08	461F0600	11	92049-7010	01		
11038-7007	09	16014-7002	08	461F0800	09	92049-7010	01		
11038-7010	09	16020-7003	08	49015-7009	01	92049-7011	01		
11038-7010	09	16025-7006	08	49015-7032	01	92049-7011	01		
11060-7001	01	16030-7003	08	49015-7032	01	92055-7007	08		
11060-7021	09	16031-7002	08	49019-2107	10	92063-7026	08		
11061-7004	08	16041-7016	08	49019-7001	10	92063-7028	08		
11061-7007	01	16041-7018	08	49040-7001	10	92063-7028	08		
11061-7008	01	16146-7013	11	49065-2078	04	92063-7029	08		
11061-7009	08	16146-7013	11	49065-7004	04	92063-7029	08		
11061-7010	08	16154-2053	04	49070-7008	09	92066-7002	06		
11061-7018	08	16154-2054	04	49078-7001	03	92066-7003	04		
12004-7003	03	16169-7012	07	49089-7023	05	92070-7003	06		
12005-7003	03	16171-7007	07	49089-7026	05	92072-7009	09		
12009-7001	03	16186-7002	08	49103-7004	07	92081-2036	10		
12011-2056	03	172G0818	01	49113-7011	07	92081-2234	08		
12016-7001	03	18088-7002	09	49118-7009	03	92093-2100	08		
12032-7001	03	21039-7002	11	49120-7015	01	92093-7003	08		
13001-7009	02	21066-7011	06	49121-7001	08	92110-2106	13		
13002-7001	02	21080-7003	11	51001-2258-9H	10	92139-7002	01		
13008-7001	02	21163-7007	11	51048-2052	10	92139-7008	01		
13025-7003	02	21171-7007	06	510A5100	06	92139-7008	01		
13029-7005	02	21171-7008	06	52005-2100	10	92140-7002	03		
13031-7033	02	21171-7013	06	55020-7004	05	92140-7003	04		
13070-7001	03	21171-7013	06	56033-7001	12	92145-7001	03		
13070-7004	03	21171-7014	06	56070-7001	12	92145-7002	04		
130B0612	01	21171-7014	06	56080-7016	12	92145-7003	07		
130B0612	04	21193-7016	06	59031-7001	06	92145-7004	07		
130B0612	05	214B0408	07	59031-7009	06	92145-7005	07		
130B0612	07	221C0512	10	59041-7001	05	92145-7015	08		
130B0616	05	221F0512	10	59041-7010	05	92150-2182	07		
130B0620	06	221F0512	10	59041-7010	05	92151-2097	06		
130B0620	10	224B0520	06	59051-7011	04	92151-7019	03		
130B0640	01	23062-7004-9H	10	59066-7009	05	92153-7005	07		
130B0816	05	23062-7010	05	59071-2079	01	92153-7007	05		
130B0816	11	233B0416	09	59071-7003	04	92153-7007	09		
130D0814	11	26030-7001	06	59076-7005	08	92153-7008	05		
130D0814	11	27005-2056	06	59231-7003	04	92153-7009	08		
130G0630	02	27008-2055	06	670B2010	09	92153-7019	03		
130T0850	01	27010-2154	06	670D2016	04	92153-7019	03		
130T0875	01	311B0400	09	92004-7007	05	92153-7033	07		
13101-7002	11	311B0600	07	92004-7008	06	92153-7033	07		
13107-7009	04	311C0600	05	92009-2021	10	92153-7034	11		
13107-7010	07	311C0600	06	92009-2083	08	92153-7034	11		
13107-7018	08	311F0600	05	92009-2308	06	92170-2088	10		