

This catalog covers:  
**FH531V—□G80**

GRID NO.

**A-01**

This grid covers:

# PARTS CATALOG

4—STROKE ENGINE

**FH531V**

<b>PRODUCT CODE</b>	<b>NOTE</b>
FH531V-AG80	MOWER(RM95)

This catalog covers:

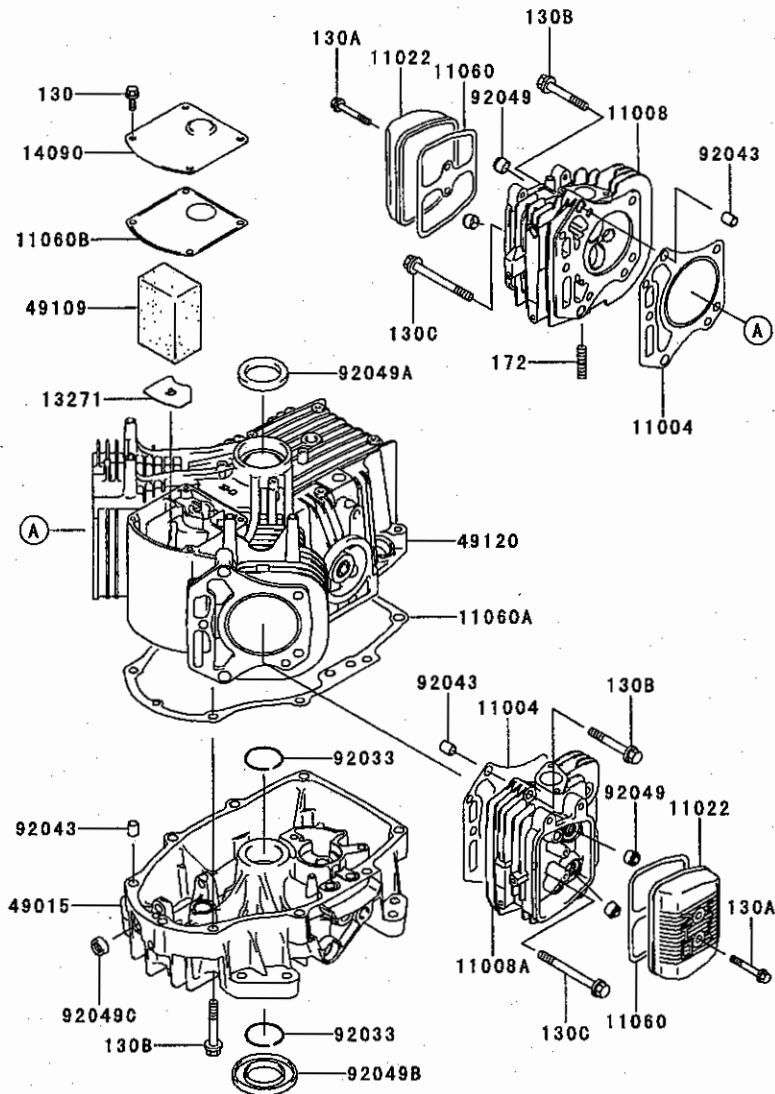
FH531V- □ G80

01

This fig. covers:

CYLINDER/CRANKCASE

E0110-A292A



Ref. No.	Part No.	Description	Quantity
11004	11004-7005	GASKET-HEAD	2
11008	11008-7005	HEAD-COMP-CYLINDER	1
11008A	11008-7006	HEAD-COMP-CYLINDER	1
11022	11022-7003	CASE-ROCKER	2
11060	11060-7001	GASKET,ROCKER CASE	2
11060A	11060-7008	GASKET,CRANKCASE COVER	1
11060B	11060-7015	GASKET,BREATHER	1
13271	13271-7016	PLATE	1
14090	14090-7001	COVER,BREATHER	1
49015	49015-6226	COVER-CRANKCASE	1
49109	49109-7002	ELEMENT-BREATHER	1
49120	49120-6119	CRANKCASE-COMP	1
92033	92033-7003	RING-SNAP	2
92043	92043-7001	PIN	6
92049	92049-7001	SEAL-OIL	4
92049A	92049-7002	SEAL-OIL	1
92049B	92049-7004	SEAL-OIL	1
92049C	92049-7005	SEAL-OIL	1
130	130B0612	BOLT-FLANGED	4
130A	130B0640	BOLT-FLANGED	4
130B	130T0850	BOLT-FLANGED	17
130C	130T0875	BOLT-FLANGED	2
172	172G0818	BOLT-STUD	4

This catalog covers:

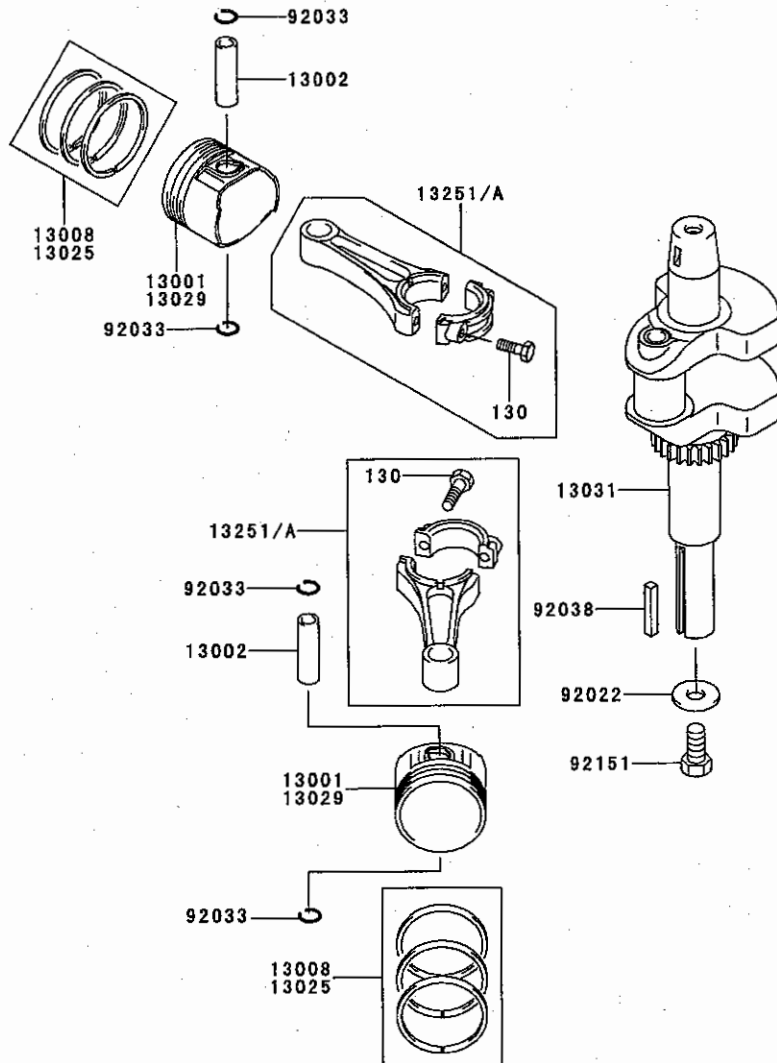
**FH531V- □ G80**

**02**

This fig. covers:

**PISTON/CRANKSHAFT**

E0120-A138C



Ref. No.	Part No.	Description	Quantity
13001	13001-7001	PISTON-ENGINE	2
13002	13002-7001	PIN-PISTON	2
13008	13008-6055	RING-SET-PISTON	2
13025	13025-7001	RING-SET-PISTON L,0.50	AR
13029	13029-7001	PISTON-ENGINE L,0.50	AR
13031	13031-7001	CRANKSHAFT-COMP	1
13251	13251-7001	ROD-ASSY-CONNECTING	2
13251A	13251-7003	ROD-ASSY-CONNECTING,U/S=0.50	AR
92022	92022-1982	WASHER,12.5X32X3.2	1
92033	92033-7002	RING-SNAP	4
92038	92038-2101	KEY	1
92151	92151-7010	BOLT,7/16-20UNF	1
130	130G0630	BOLT-FLANGED	4

This catalog covers:

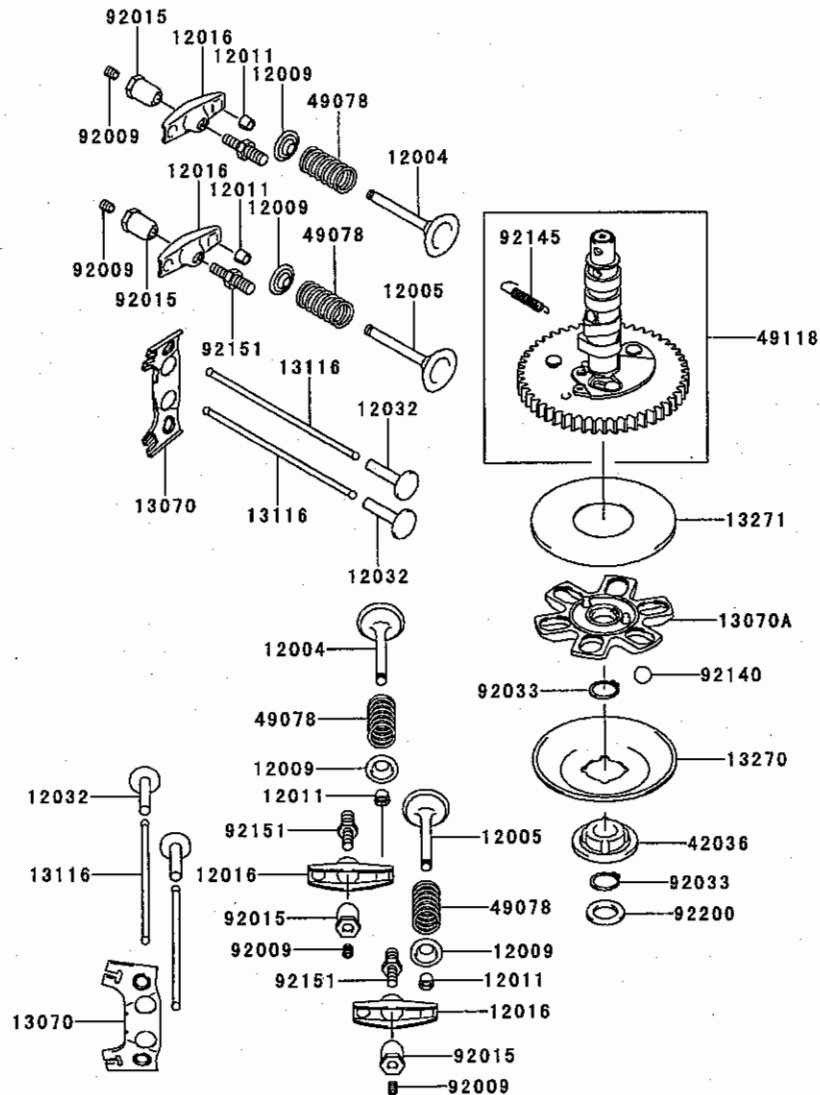
FH531V- □ G80

03

This fig. covers:

VALVE/CAMSHAFT

E0130-A090A



Ref. No.	Part No.	Description	Quantity
12004	12004-7003	VALVE-INTAKE	2
12005	12005-7003	VALVE-EXHAUST	2
12009	12009-7001	RETAINER-VALVE SPRING	4
12011	12011-2056	COLLET	8
12016	12016-7001	ARM-ROCKER	4
12032	12032-7001	TAPPET	4
13070	13070-7001	GUIDE	2
13070A	13070-7004	GUIDE	1
13116	13116-2057	ROD-PUSH	4
13270	13270-7002	PLATE	1
13271	13271-7007	PLATE	1
42036	42036-7001	SLEEVE	1
49078	49078-7001	SPRING-ENGINE VALVE	4
49118	49118-7004	CAMSHAFT-COMP	1
92009	92009-2341	SCREW	4
92015	92015-2253	NUT	4
92033	92033-7001	RING-SNAP	2
92140	92140-7002	BALL	6
92145	92145-7001	SPRING	1
92151	92151-7001	BOLT	4
92200	92200-7001	WASHER	1

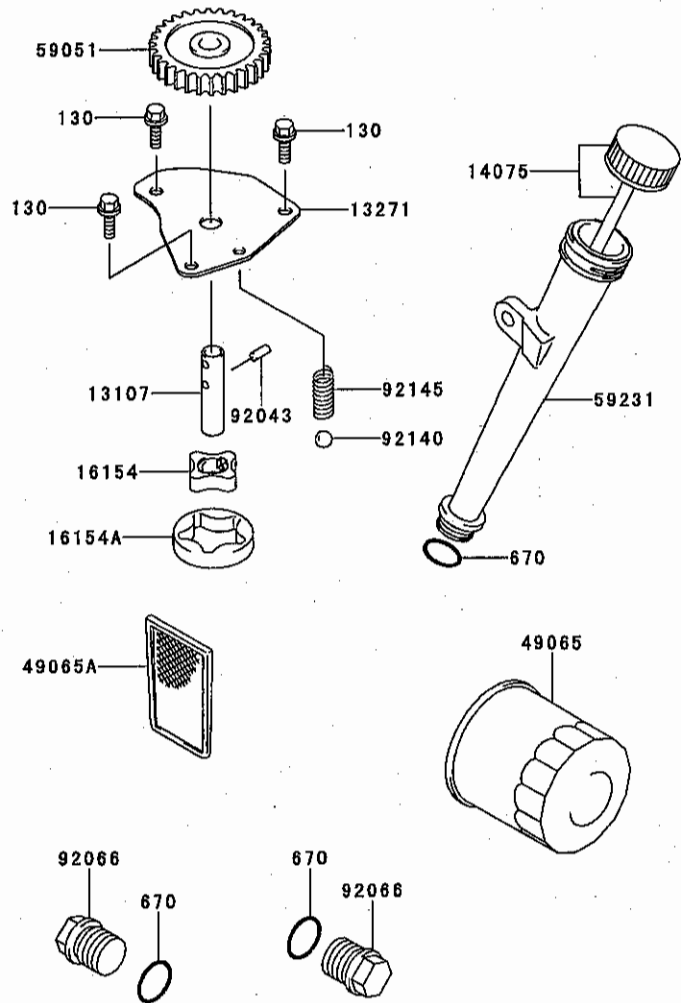
This catalog covers:

FH531V- □ G80

This fig. covers:

04 LUBRICATION-EQUIPMENT

E0140-A138A



Ref. No.	Part No.	Description	Quantity
13107	13107-7009	SHAFT	1
13271	13271-7017	PLATE	1
14075	14075-7001	CAP-ASSY	1
16154	16154-2053	ROTOR-PUMP,IN	1
16154A	16154-2054	ROTOR-PUMP,OUT	1
49065	49065-2078	FILTER-OIL	1
49065A	49065-7004	FILTER-OIL	1
59051	59051-7004	GEAR-SPUR	1
59231	59231-7001	FILLER	1
92043	92043-7003	PIN	1
92066	92066-7003	PLUG	2
92140	92140-7003	BALL	1
92145	92145-7002	SPRING	1
130	130B0612	BOLT-FLANGED	3
670	670D2016	O RING	3

This catalog covers:

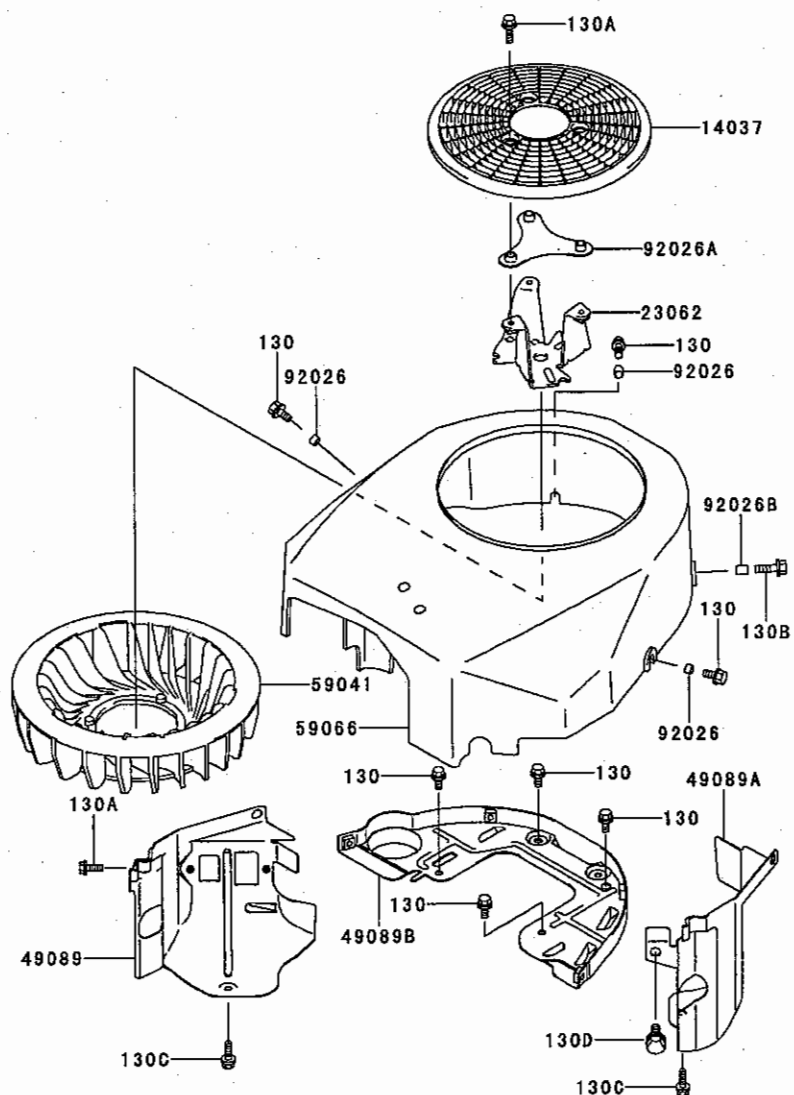
FH531V- □ G80

05

This fig. covers:

COOLING-EQUIPMENT

E0150-A249A



Ref. No.	Part No.	Description	Quantity
14037	14037-7001	SCREEN	1
23062	23062-7002	BRACKET-COMP	1
49089	49089-7001	SHROUD-ENGINE	1
49089A	49089-7002	SHROUD-ENGINE	1
49089B	49089-7003	SHROUD-ENGINE	1
59041	59041-7001	FAN	1
59066	59066-7001	HOUSING-FAN	1
92026	92026-7001	SPACER,6.2X7.9X5	3
92026A	92026-7002	SPACER	1
92026B	92026-7003	SPACER,6.5X7.9X10.5	1
130	130B0612	BOLT-FLANGED	7
130A	130B0616	BOLT-FLANGED	5
130B	130B0620	BOLT-FLANGED	1
130C	130B0625	BOLT-FLANGED	2
130D	130B0816	BOLT-FLANGED	1

This catalog covers:

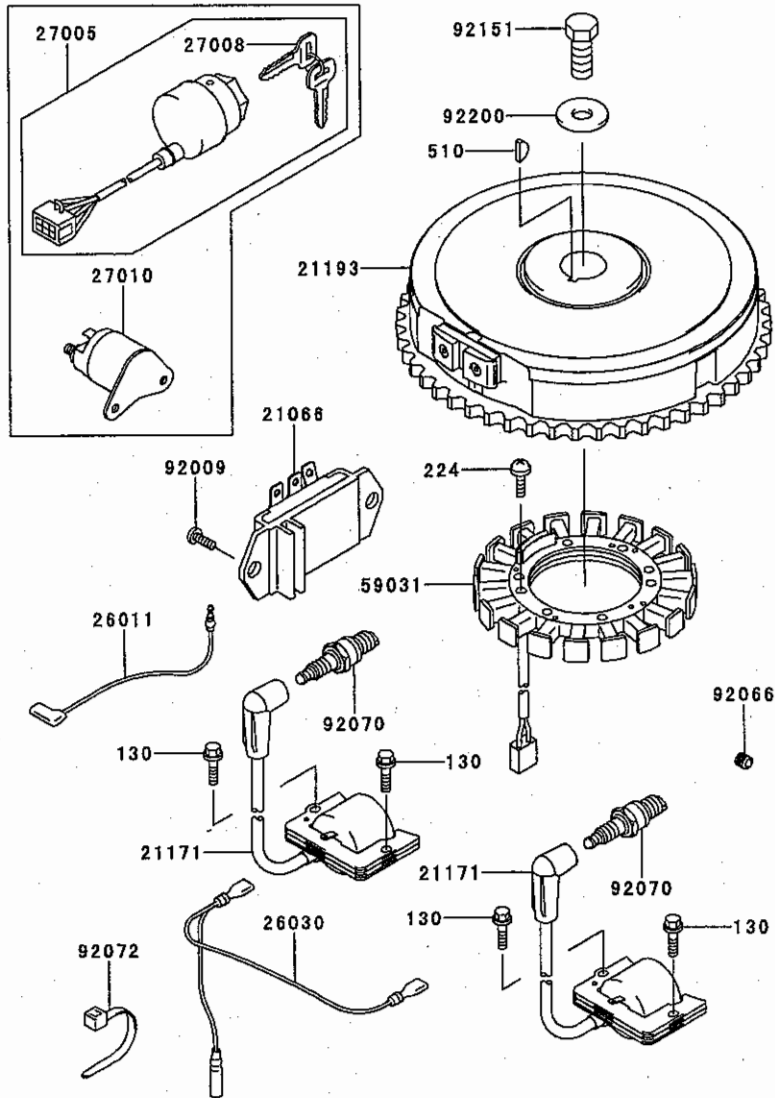
FH531V- □ G80

06

This fig. covers:

ELECTRIC-EQUIPMENT

E0160-A648A



Ref. No.	Part No.	Description	Quantity
21066	21066-7001	REGULATOR-VOLTAGE	1
21171	21171-7001	COIL-ASSY-IGNITION	2
21193	21193-7007	FLYWHEEL-ASSY	1
26011	26011-7001	WIRE-LEAD	1
26030	26030-7001	HARNES	1
27005	27005-2056	SWITCH-ASSY-IGNITION	1
27008	27008-2055	KEY-LOCK	2
27010	27010-2154	SWITCH	1
59031	59031-7001	COIL-CHARGING	1
92009	92009-2308	SCREW	2
92066	92066-7002	PLUG	1
92070	92070-7003	PLUG-SPARK,RCJ8Y,SOLID	2
92072	92072-7003	BAND	2
92151	92151-2097	BOLT,12X30	1
92200	92200-7002	WASHER	1
130	130B0620	BOLT-FLANGED	4
224	224B0520	SCREW-PAN-WP-CROS	4
510	510A5100	KEY-WOODRUFF	1

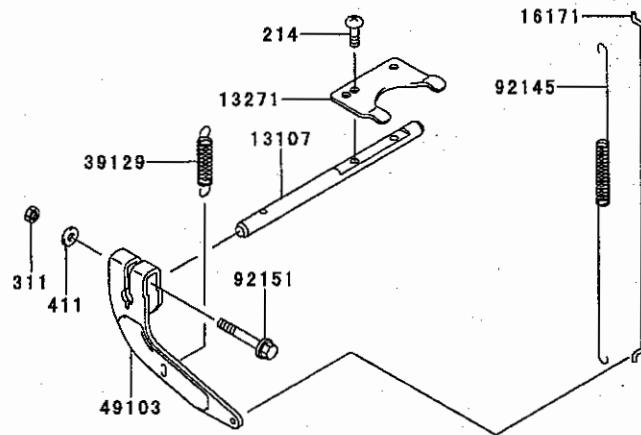
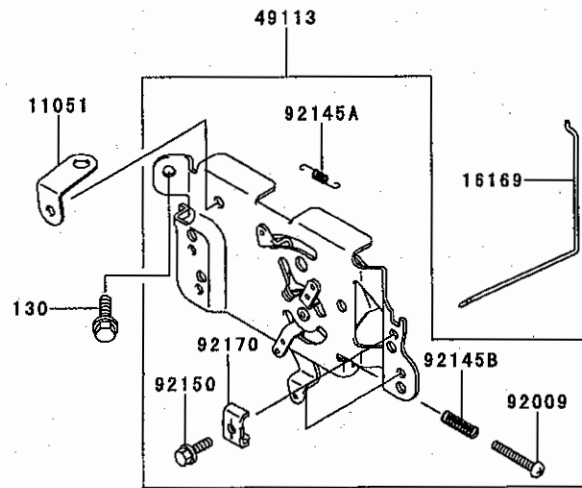
This catalog covers:

FH531V- □ G80

This fig. covers:

07 CONTROL-EQUIPMENT

E0170-A333A



Ref. No.	Part No.	Description	Quantity
11051	11051-7008	BRACKET	1
13107	13107-7010	SHAFT	1
13271	13271-7018	PLATE	1
16169	16169-7001	LINK-CHOKE	1
16171	16171-7001	LINK	1
39129	39129-7003	SPRING-GOVERNOR	1
49103	49103-7002	ARM-GOVERNOR	1
49113	49113-7011	PANEL-COMP-CONTROL	1
92009	92009-7002	SCREW,4X30	1
92145	92145-7003	SPRING	1
92145A	92145-7004	SPRING	1
92145B	92145-7005	SPRING	1
92150	92150-2182	BOLT,5X18	2
92151	92151-7006	BOLT,6X30	1
92170	92170-7001	CLAMP	2
130	130B0612	BOLT-FLANGED	2
214	214B0408	SCREW-PAN+	2
311	311B0600	NUT-HEX	1
411	411B0600	WASHER-PLAIN	1



This catalog covers:

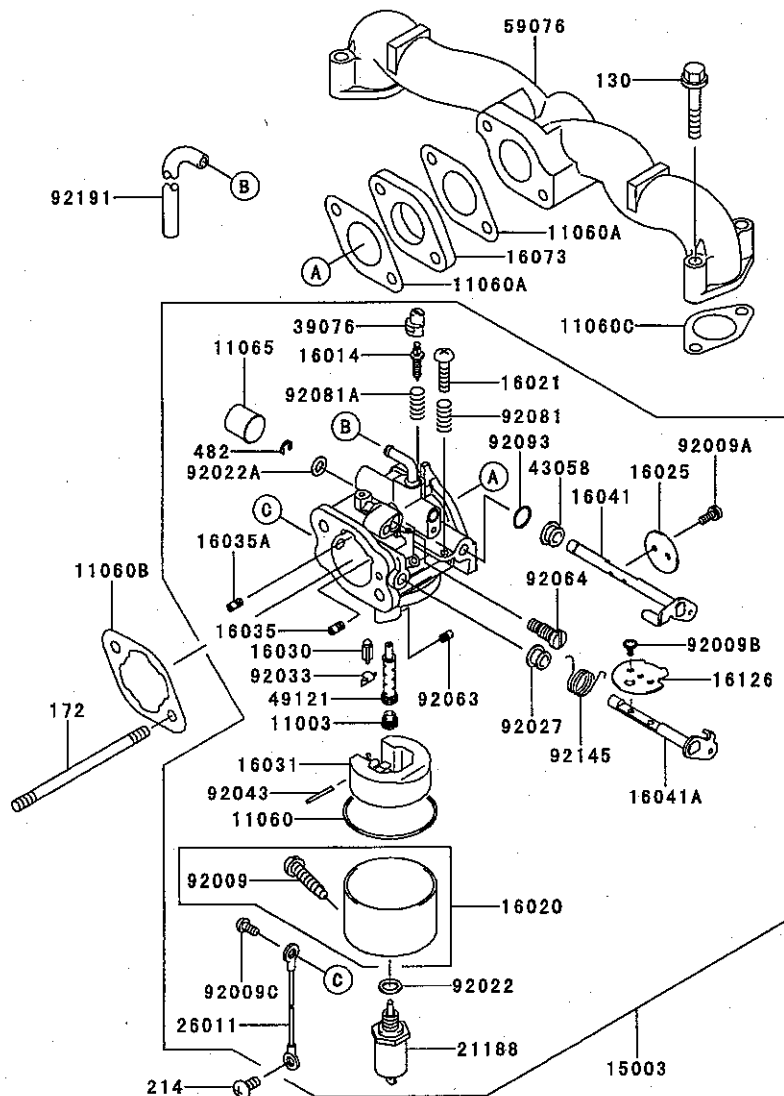
FH531V- □ G80

08

This fig. covers:

CARBURETOR

E0180-A417A



Ref. No.	Part No.	Description	Quantity
11003	11003-2105	SEAT-VALVE	1
11060	11060-2406	GASKET	1
11060A	11060-7003	GASKET,INSURATOR	2
11060B	11060-7004	GASKET,AIR FILTER	1
11060C	11060-7005	GASKET	2
11065	11065-2061	CAP	1
15003	15003-7034	CARBURETOR-ASSY	1
16014	16014-2080	SCREW-PILOT AIR	1
16020	16020-2141	CHAMBER-FLOAT	1
16021	16021-2060	SCREW-THROTTLE STOP	1
16025	16025-2195	VALVE-THROTTLE,#135	1
16030	16030-2067	VALVE-FLOAT	1
16031	16031-2066	FLOAT	1
16035	16035-2051	JET-AIR,#1.4	1
16035A	16035-2077	JET-AIR,#0.8	1
16041	16041-2253	SHAFT-CARBURETOR,THROTTLE	1
16041A	16041-7006	SHAFT-CARBURETOR	1
16073	16073-7001	INSULATOR	1
16126	16126-7008	VALVE	1
21188	21188-2011	SOLENOID	1
26011	26011-2281	WIRE-LEAD	1
39076	39076-2053	LIMITER	1
43058	43058-3716	RING	1
49121	49121-2227	NOZZLE-MAIN,#117A	1
59076	59076-7001	MANIFOLD-INTAKE	1
92009	92009-2015	SCREW	1
92009A	92009-2024	SCREW	2
92009B	92009-2081	SCREW	2
92009C	92009-2400	SCREW	1
92022	92022-2231	WASHER	1
92022A	92022-2239	WASHER	1
92027	92027-2025	COLLAR	1
92033	92033-2067	RING-SNAP	1
92043	92043-2226	PIN	1
92063	92063-2367	JET-MAIN,#116.3	1
92064	92064-2103	JET-PILOT,#43.8	1
92081	92081-2009	SPRING	1
92081A	92081-2256	SPRING	1
92093	92093-2002	SEAL	1
92145	92145-2061	SPRING	1
92191	92191-7016	TUBE,4.76X7.94X225	1
130	130B0635	BOLT-FLANGED	4
172	172G0685	BOLT-STUD	2
214	214B0510	SCREW-PAN+	1
482	482L4000	CIRCLIP-TYPE-E	1

This catalog covers:

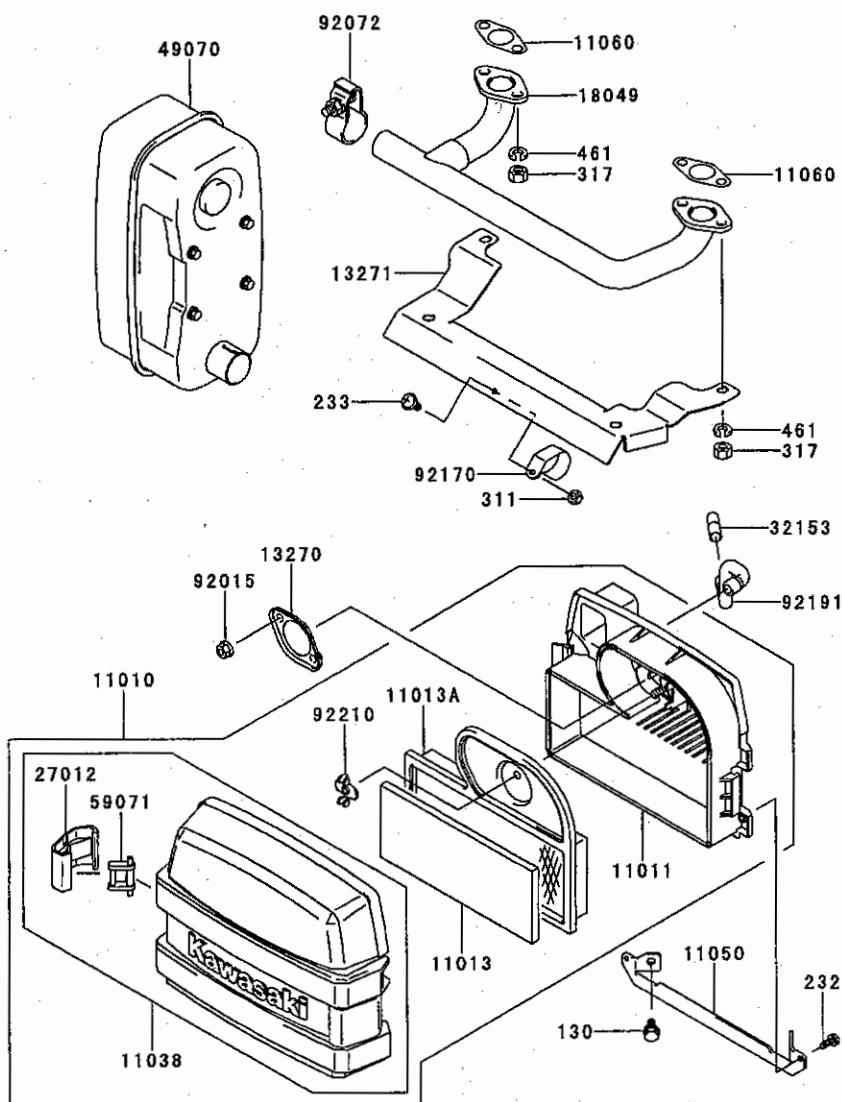
FH531V- □ G80

09

This fig. covers:

**AIR-FILTER/MUFFLER**

E0190-A415A



Ref. No.	Part No.	Description	Quantity
11010	11010-7001	FILTER-ASSY-AIR	1
11011	11011-7001	CASE-AIR FILTER	1
11013	11013-7001	ELEMENT-AIR FILTER	1
11013A	11013-7002	ELEMENT-AIR FILTER	1
11038	11038-7001	CASE-ASSY-AIR FILTER	1
11050	11050-7006	BRACKET	1
11060	11060-7021	GASKET,MUFFLER	2
13270	13270-7001	PLATE	1
13271	13271-7001	PLATE	1
18049	18049-7002	PIPE-EXHAUST	1
27012	27012-7001	HOOK,AIR FILTER	2
32153	32153-7001	PIPE	1
49070	49070-7008	MUFFLER-COMP	1
59071	59071-7001	JOINT	2
92015	92015-1193	NUT	2
92072	92072-7005	BAND	1
92170	92170-7002	CLAMP	1
92191	92191-7001	TUBE	1
92210	92210-7004	NUT	1
130	130B0612	BOLT-FLANGED	2
232	232B0514	SCREW-PAN-WS+	2
233	233B0416	SCREW-PAN-WP+	1
311	311B0400	NUT-HEX	1
317	317R0800	NUT-HEX-SMALL	4
461	461F0800	WASHER-SPRING	4

This catalog covers:

FH531V- □ G80

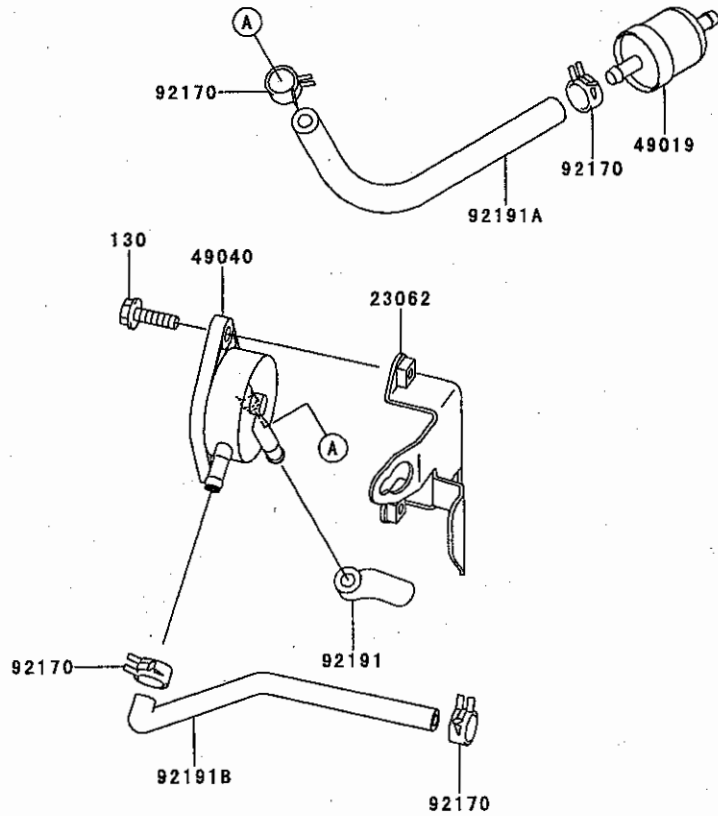
This fig. covers:

10

FUEL-TANK/FUEL-VALVE

E0200-A275A

Ref. No.	Part No.	Description	Quantity
23062	23062-7004-9H	BRACKET-COMP	1
49019	49019-7001	FILTER-FUEL	1
49040	49040-2075	PUMP-FUEL	1
92170	92170-2088	CLAMP	4
92191	92191-7002	TUBE	1
92191A	92191-7003	TUBE,6.35X12.7X160	1
92191B	92191-7004	TUBE	1
130	130B0620	BOLT-FLANGED	2



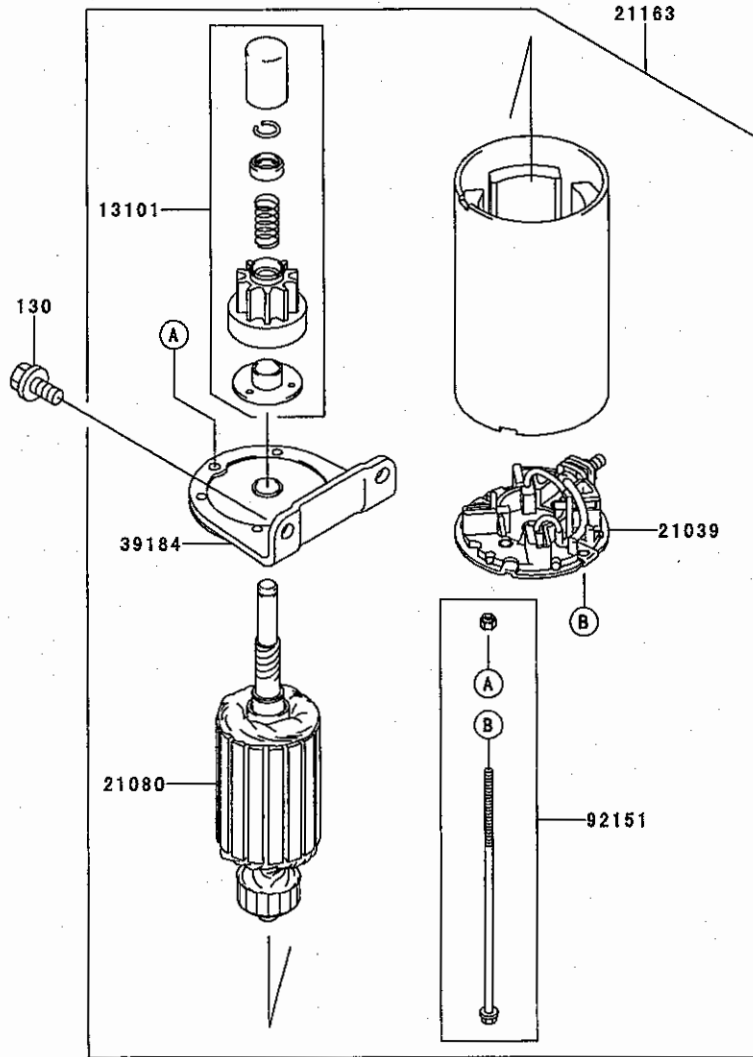
This catalog covers:

FH531V- □ G80

This fig. covers:

11 STARTER

E0210-A205A



Ref. No.	Part No.	Description	Quantity
13101	13101-7001	GEAR-ASSY	1
21039	21039-7001	BRUSH	1
21080	21080-7001	ARMATURE	1
21163	21163-7001	STARTER-ELECTRIC	1
39184	39184-7001	BRACKET-ASSY	1
92151	92151-7013	BOLT	1
130	130B0816	BOLT-FLANGED	2

This catalog covers:

**FH531V- □ G80**

**12**

This fig. covers:

**LABEL**

F0290-A735A

Ref. No.	Part No.	Description	Quantity
56080	56080-7002	LABEL-BRAND	1
56080A	56080-7005	LABEL-BRAND	1

