

This catalog covers:
FJ100D-□G81

This fig. covers:
TITLE

PARTS CATALOG

4-STROKE ENGINE

FJ100D

PRODUCT CODE	NOTE
FJ100D-AG81	POWER-CARRIER
FJ100D-BG81	

This catalog covers:

FJ100D-□G81

PARTS CATALOG INTRODUCTION

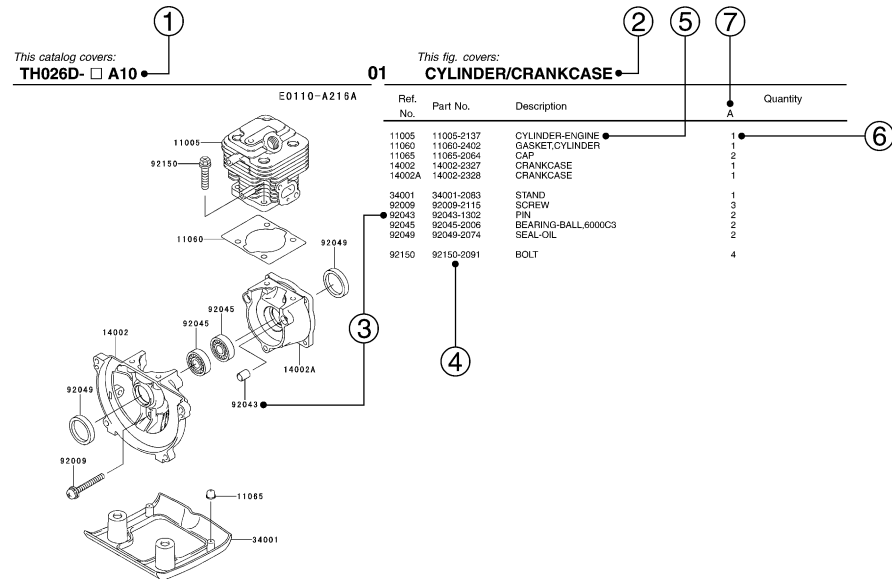
This parts catalog lists parts and sub-assemblies provided as service parts.

When it becomes necessary to replace parts, always use KAWASAKI GENUINE PARTS which have passed strict inspection which guarantees quality and performance.

1. HOW TO ORDER PARTS

- When ordering the parts, be sure to use the parts catalog corresponding to the product code. Check the product revision codes on the product and the catalog.
Product Code (example) : FA130D-**AA00**
Product Revision Code
- Specify the part code (all digits) exactly as listed in this catalog on your parts order.
- The parts not shown in the illustrations of this catalog are not sold separately; only the complete units or next higher assemblies illustrated are supplied as the service parts.

2. EXPLANATION OF PARTS CATALOG FORMAT



1) Product Code

This code describes the product code covered by this catalog. The product revision code, which is a part of the product code, is omitted.

2) Part Group Title

This title is the representative name for the group of parts illustrated on the page.

3) Reference Number

The reference numbers are shown on the illustration and the list as the link between them.

This fig. covers:

PARTS LIST INFORMATION

4) Part Number

This is the key of your parts ordering.

Three kinds of part number are used in this catalog.

- Structure 1
□□□□□□-□□□□□□-□□
□□□□□□-□□□□□□
Part Revision Code
- Structure 2
□□□□□□-□□□□□□-□□
Color Code for Painted Part
- Standard Hardware Number
(for bolts, nuts, washer, or the like)
□□□□□□□□
Size Code
Material and Surface Treatment Code
Item Code

5) Description and Additional Information

The part name, the location, the size, and the serial number as additional information, etc. are described here. Use them to find out and check the part required.

When a part number is changed without change of the product revision code and the changed parts are not interchangeable, the serial number of the product is noted as follows;

- (FA130 - 100001) : Affected units are from beginning of the product of the product code up to and including this serial number.
- (FA130 - 100002 -) : Affected units are from this serial number and above.
- (FA130 - 100002 - FA130 - 110001) : Affected units are in this serial number range.

6) Quantity

The figure shows quantity of the part required at the indicated position on the illustration and for the specified product revision code.

The asterisk (*) on this column means the part can be used as the substitute on the product and is supplied until the stock is exhausted.

Note: Some small parts will be supplied by units.

Example: If six (6) bolts are ordered and the minimum quantity per unit is five (5), two (2), units of the bolt will be delivered.

7) Product Revision Code

This Code indicates an important change which affects the service parts interchangeability.

3. ABBREVIATIONS

#	Number	FR.....	Front	RH	Right Hand
&.....	And	G	Gram	RPM ...	Revolutions Per Minute
(+).....	Plus	HEX.....	Hexagonal	RR	Rear
(-).....	Minus	ID=.....	Inside Diameter	STD.....	Standard
2ND.....	Second	IN.....	Inch	T.....	Teeth
3RD	Third	L=.....	Length	T=.....	Thickness
4TH.....	Fourth	LH.....	Left Hand	U/S.....	Under Size
A.....	Ampere	LWR	Lower	UPP	Upper
AR.....	As Required	MM.....	Millimeter	V.....	Volt
ASSY.....	Assembly	O/S.....	Over Size	W.....	Watt
CNT	Center	OD=.....	Outside Diameter		
COMP.....	Complete	REF.....	Reference		

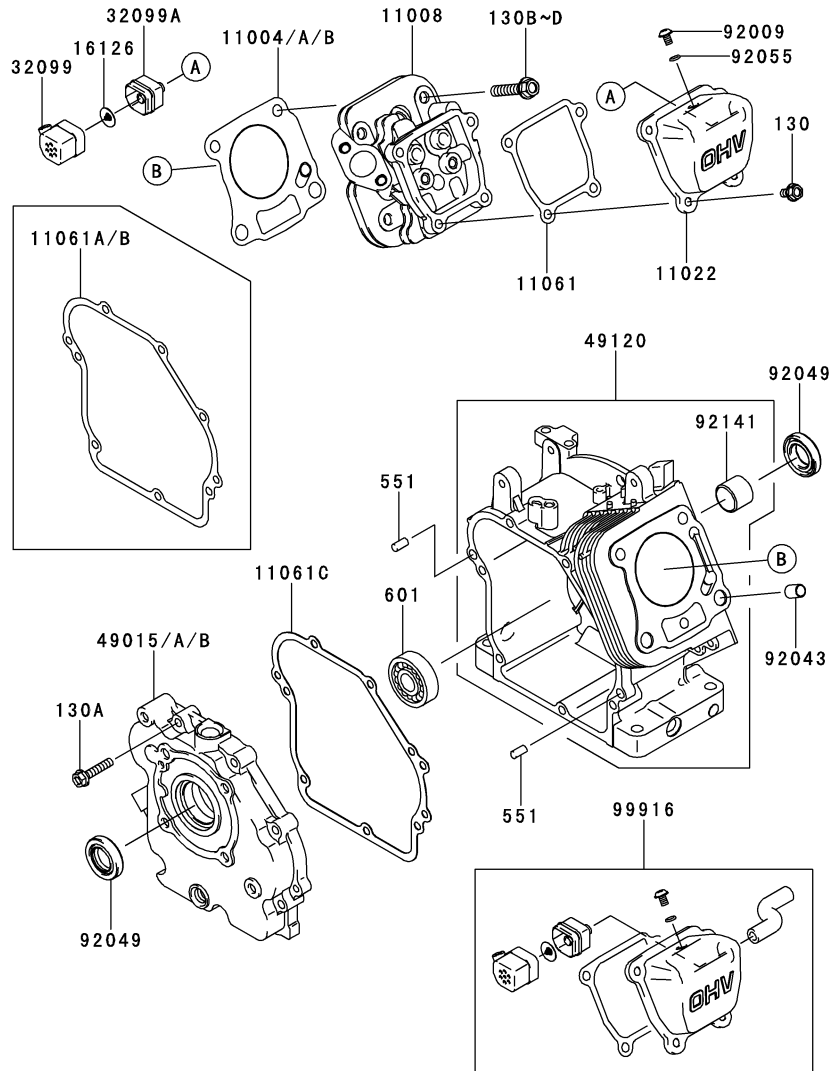
This catalog covers:

FJ100D- □ G81

This fig. covers:

01 CYLINDER/CRANKCASE

E0110-A888A



Ref. No.	Part No.	Description	Quantity	
			A	B
11004	11004-2143	GASKET-HEAD	1	
11004A	11004-2143	GASKET-HEAD		*
11004B	11004-2147	GASKET-HEAD		1
11008	11008-2165	HEAD-COMP-CYLINDER	1	1
11022	11022-2080	CASE-ROCKER	1	1
11061	11061-2100	GASKET,CASE-ROCKER	1	1
11061A	11061-2104	GASKET,COVER-CRANKCA	1	
11061B	11061-2104	GASKET,COVER-CRANKCA		*
11061C	11061-2217	GASKET,COVER-CRANKCASE		1
16126	16126-2051	VALVE	1	1
32099	32099-2402	CASE	1	1
32099A	32099-2403	CASE	1	1
49015	49015-6278	COVER-CRANKCASE	1	
49015A	49015-6278	COVER-CRANKCASE		*
49015B	49015-6302	COVER-CRANKCASE		1
49120	49120-6154	CRANKCASE-COMP	1	1
92009	92009-2322	SCREW	1	1
92043	92043-1037	PIN	2	2
92049	92049-2261	SEAL-OIL,ISD 20X35X8AE	2	2
92055	92055-1343	RING-O	1	1
92141	92141-2120	BEARING-PLANE	1	1
99916	99916-2175	KIT-KHI PARTS,CASE-ROCKER	AR	AR
130	130AA0612	BOLT-FLANGED,6X12	4	4
130A	130BA0630	BOLT-FLANGED,6X30	7	7
130B	130CA0840	BOLT-FLANGED,8X40		4
130C	130T0840	BOLT-FLANGED,8X40	4	
130D	130T0840	BOLT-FLANGED,8X40		*
551	551A0612	PIN-DOWEL,6X12	2	2
601	601A6004	BEARING-BALL	1	1

This catalog covers:

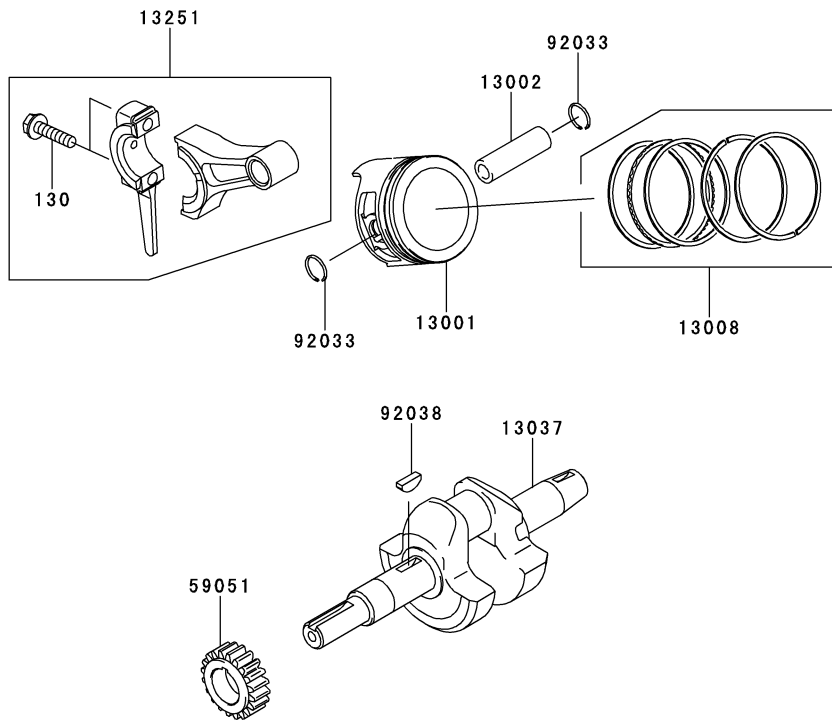
FJ100D- □ G81

This fig. covers:

02 PISTON/CRANKSHAFT

E0120-A261A

Ref. No.	Part No.	Description	Quantity	
			A	B
13001	13001-2155	PISTON-ENGINE	1	1
13002	13002-2083	PIN-PISTON	1	1
13008	13008-2061	RING-SET-PISTON	1	1
13037	13037-2581	CRANKSHAFT	1	1
13251	13251-2068	ROD-ASSY-CONNECTING	1	1
59051	59051-2375	GEAR-SPUR	1	1
92033	92033-2051	RING-SNAP	2	2
92038	92038-003	KEY	1	1
130	130BA0625	BOLT-FLANGED,6X25	2	2



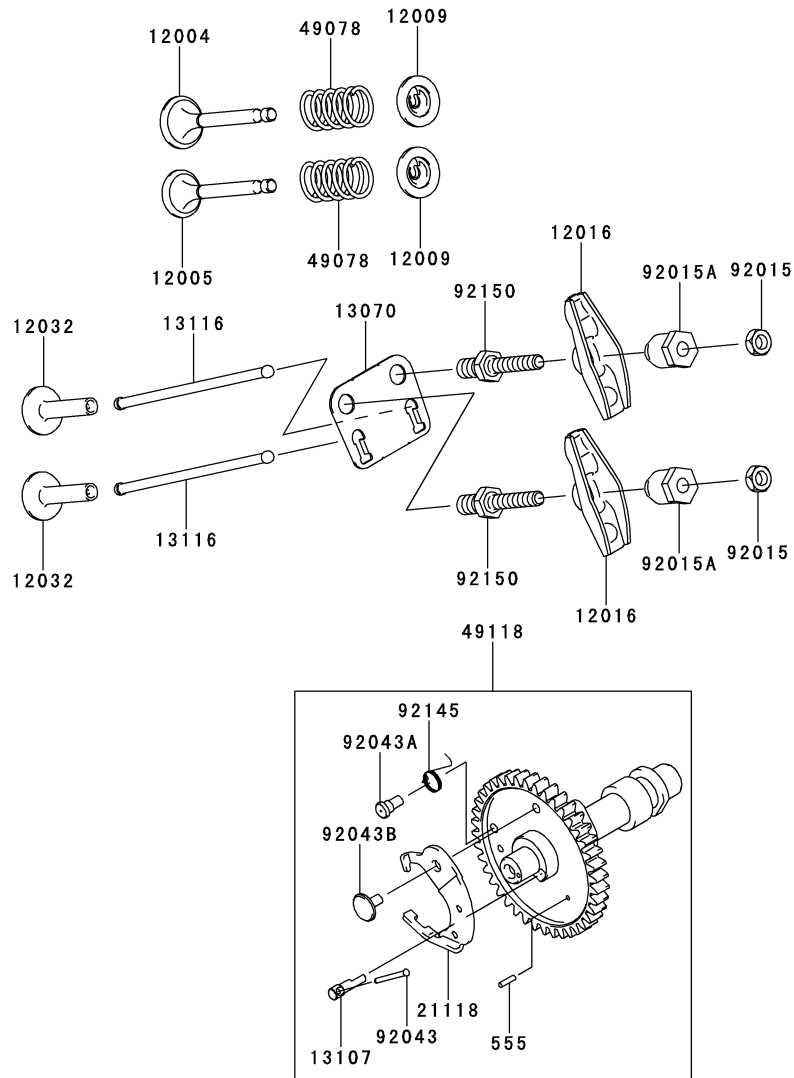
This catalog covers:

FJ100D- □ G81

This fig. covers:

03 VALVE/CAMSHAFT

E0130-A140A



Ref. No.	Part No.	Description	Quantity	
			A	B
12004	12004-2118	VALVE-INTAKE	1	1
12005	12005-2104	VALVE-EXHAUST	1	1
12009	12009-2062	RETAINER-VALVE SPRING	2	2
12016	12016-2059	ARM-ROCKER	2	2
12032	12032-2065	TAPPET	2	2
13070	13070-2111	GUIDE, ROD-PUSH	1	1
13107	13107-2301	SHAFT	1	1
13116	13116-2075	ROD-PUSH	2	2
21118	21118-2094	DECOMPRESSOR	1	1
49078	49078-2085	SPRING-ENGINE VALVE	2	2
49118	49118-2156	CAMSHAFT-COMP	1	1
92015	92015-2240	NUT	2	2
92015A	92015-2253	NUT	2	2
92043	92043-2089	PIN	1	1
92043A	92043-2240	PIN, SPRING	1	1
92043B	92043-2242	PIN, DECOMPRESSOR	1	1
92145	92145-2107	SPRING	1	1
92150	92150-2198	BOLT	2	2
555	555A0208	PIN-SPRING, 2X8	2	2

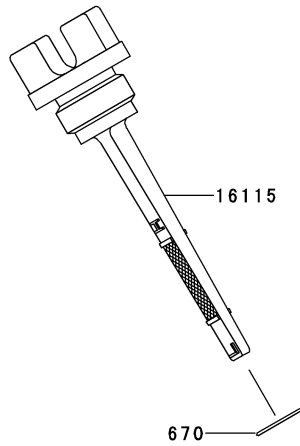
This catalog covers:

FJ100D- □ G81

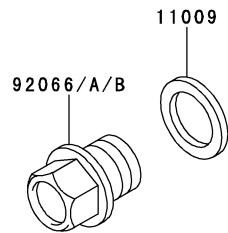
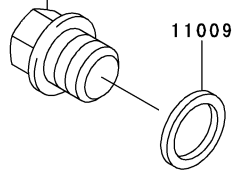
This fig. covers:

04 LUBRICATION-EQUIPMENT

E0140-A356B



92066/A/B



Ref. No.	Part No.	Description	Quantity	
			A	B
11009	11009-2175	GASKET	2	2
16115	16115-2128	CAP-OIL FILLER	1	1
92066	92066-2203	PLUG,DRAIN	2	
92066A	92066-2203	PLUG,DRAIN		*
92066B	92066-2253	PLUG,14X12		2
670	670B2015	O RING,15MM	1	1

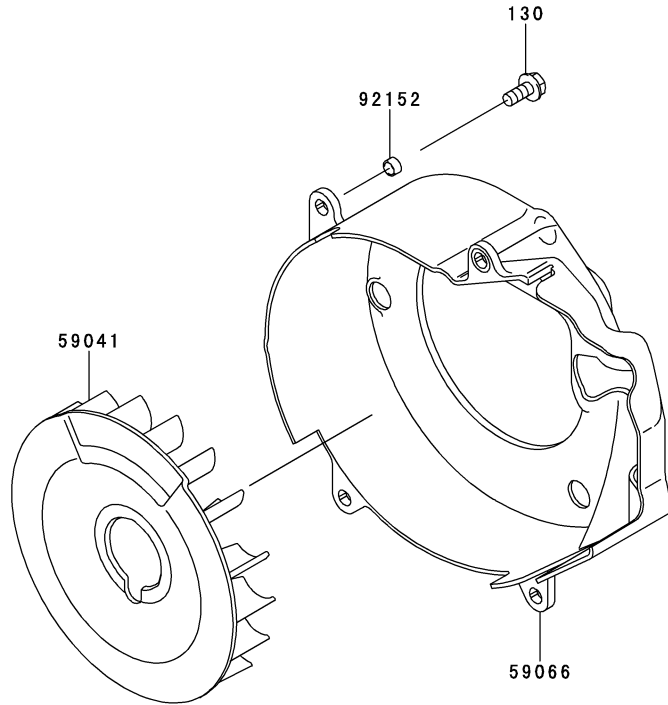
This catalog covers:

FJ100D- □ G81

This fig. covers:

05 COOLING-EQUIPMENT

E0150-A625A



Ref. No.	Part No.	Description	Quantity	
			A	B
59041	59041-2095	FAN	1	1
59066	59066-2790	HOUSING-FAN	1	1
92152	92152-2082	COLLAR	4	4
130	130BA0614	BOLT-FLANGED,6X14	4	4

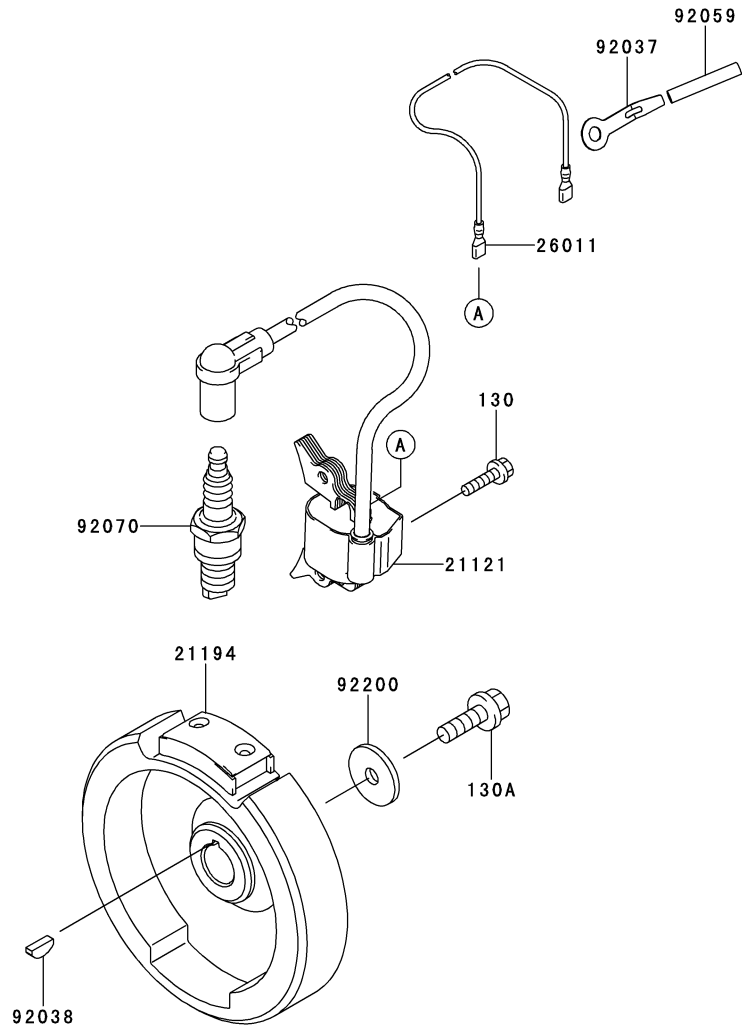
This catalog covers:

FJ100D- □ G81

This fig. covers:

06 ELECTRIC-EQUIPMENT

E0160-B077A



Ref. No.	Part No.	Description	Quantity	
			A	B
21121	21121-2101	COIL-IGNITION	1	1
21194	21194-2346	FLYWHEEL-COMP	1	1
26011	26011-2383	WIRE-LEAD	1	1
92037	92037-2165	CLAMP	1	1
92038	92038-003	KEY	1	1
92059	92059-2156	TUBE,5X6X35	1	1
92070	92070-2117	PLUG-SPARK,BR6HS(NGK),SOLID	1	1
92200	92200-2142	WASHER	1	1
130	130AA0520	BOLT-FLANGED,5X20	2	2
130A	130CA0825	BOLT-FLANGED,8X25	1	1

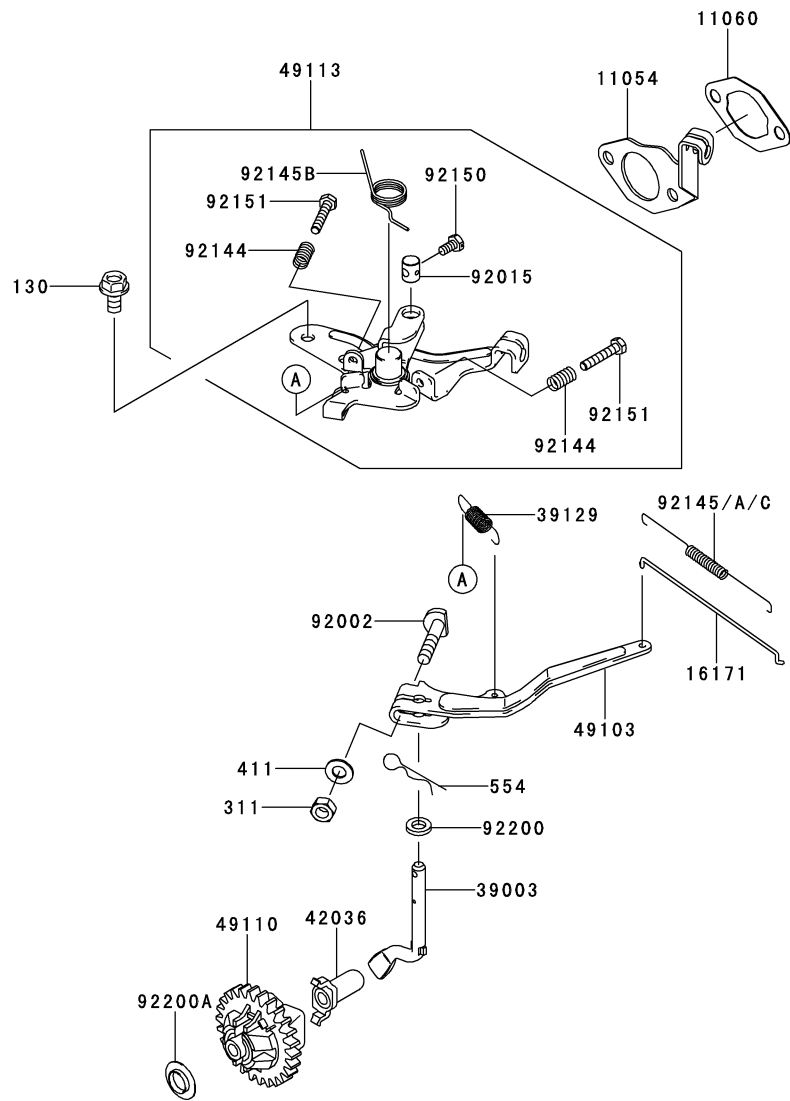
This catalog covers:

FJ100D- □ G81

This fig. covers:

07 CONTROL-EQUIPMENT

E0170-A540B



Ref. No.	Part No.	Description	Quantity	
			A	B
11054	11054-2051	BRACKET	1	1
11060	11060-2049	GASKET,AIR FILTER	1	1
16171	16171-2099	LINK	1	1
39003	39003-2094	ARM-PIVOT	1	1
39129	39129-2114	SPRING-GOVERNOR	1	1
42036	42036-2051	SLEEVE	1	1
49103	49103-2166	ARM-GOVERNOR	1	1
49110	49110-2101	GOVERNOR-ASSY	1	1
49113	49113-2192	PANEL-COMP-CONTROL	1	1
92002	92002-2269	BOLT,6X28	1	1
92015	92015-2120	NUT	1	1
92144	92144-2266	SPRING	2	2
92145	92145-2139	SPRING	1	
92145A	92145-2139	SPRING		*
92145B	92145-2140	SPRING	1	1
92145C	92145-2163	SPRING		1
92150	92150-2288	BOLT	1	1
92151	92151-2147	BOLT,4X22	2	2
92200	92200-2029	WASHER,6.5X11.5X2.0	1	1
92200A	92200-2158	WASHER	1	1
130	130AA0612	BOLT-FLANGED,6X12	2	2
311	311AA0600	NUT-HEX,6MM	1	1
411	411AA0600	WASHER-PLAIN,6MM	1	1
554	554DA0600	PIN-SNAP,1.2X21.2	1	1

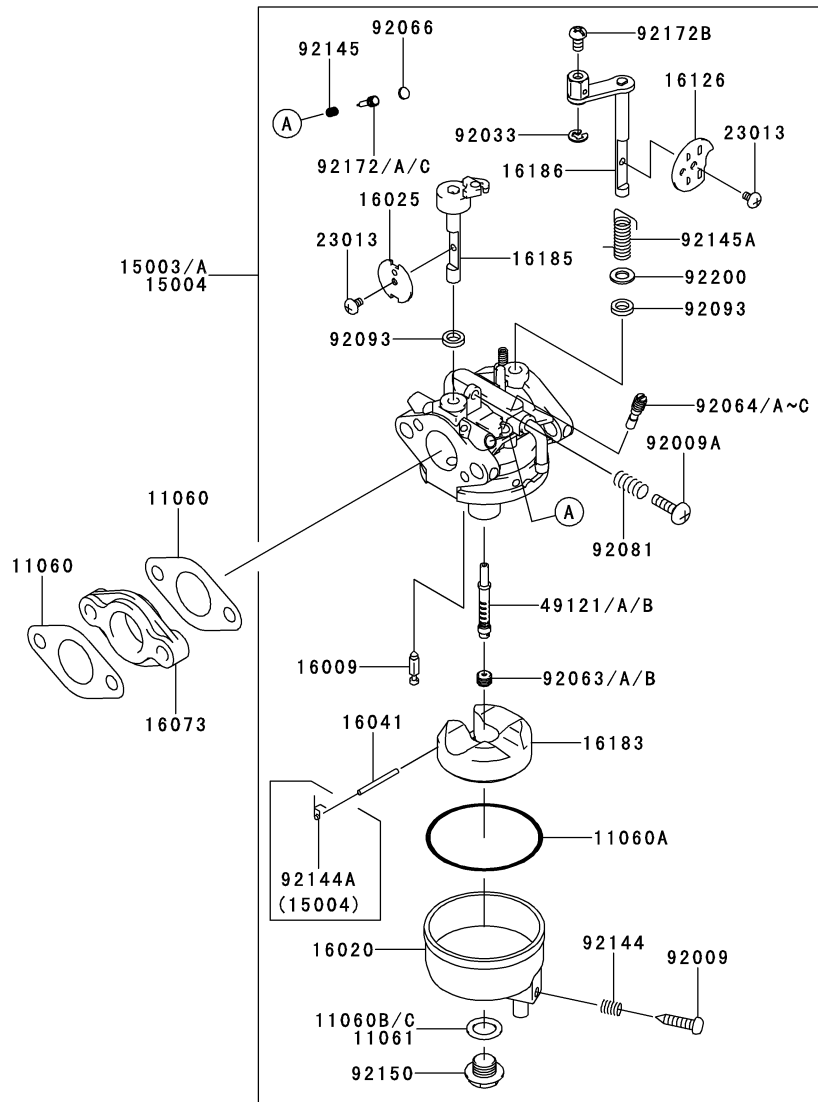
This catalog covers:

FJ100D- □ G81

This fig. covers:

08 CARBURETOR

E0180-B052A



Ref. No.	Part No.	Description	Quantity	
			A	B
11060	11060-2051	GASKET,CARBURETOR	2	2
11060A	11060-2190	GASKET	1	1
11060B	11060-2191	GASKET	1	*
11060C	11060-2191	GASKET		*
11061	11061-2181	GASKET		1
15003	15003-2995	CARBURETOR-ASSY	1	
15003A	15003-2995	CARBURETOR-ASSY		*
	(FJ100-028053)		
15004	15004-2016	CARBURETOR-ASSY		1
	(FJ100-028054 -		
16009	16009-2136	NEEDLE-JET	1	1
16020	16020-2150	CHAMBER-FLOAT	1	1
16025	16025-2166	VALVE-THROTTLE	1	1
16041	16041-2224	SHAFT-CARBURETOR,FLOAT	1	1
16073	16073-2225	INSULATOR	1	1
16126	16126-2236	VALVE,CHOKE	1	1
16183	16183-2002	FLOAT-ASSY	1	1
16185	16185-2044	VALVE-ASSY-THROTTLE	1	1
16186	16186-2046	VALVE-ASSY-CHOKE	1	1
23013	23013-2058	SCREW-ASSY	2	2
49121	49121-2256	NOZZLE-MAIN	1	*
49121A	49121-2256	NOZZLE-MAIN		*
	(FJ100-028053)		
49121B	49121-2262	NOZZLE-MAIN		1
	(FJ100-028054 -		
92009	92009-2348	SCREW	1	1
92009A	92009-2349	SCREW	1	1
92033	92033-2082	RING-SNAP	1	1
92063	92063-2431	JET-MAIN,#54	1	
92063A	92063-2431	JET-MAIN,#54		*
	(FJ100-028053)		
92063B	92063-2442	JET-MAIN,#60		1
	(FJ100-028054 -		
92064	92064-2134	JET-PILOT,#46		1
92064A	92064-2146	JET-PILOT,#52	1	
92064B	92064-2146	JET-PILOT,#52		*
	(FJ100-028053)		
92064C	92064-2147	JET-PILOT,#46		*
	(FJ100-028054 -		
92066	92066-0714	PLUG	1	1

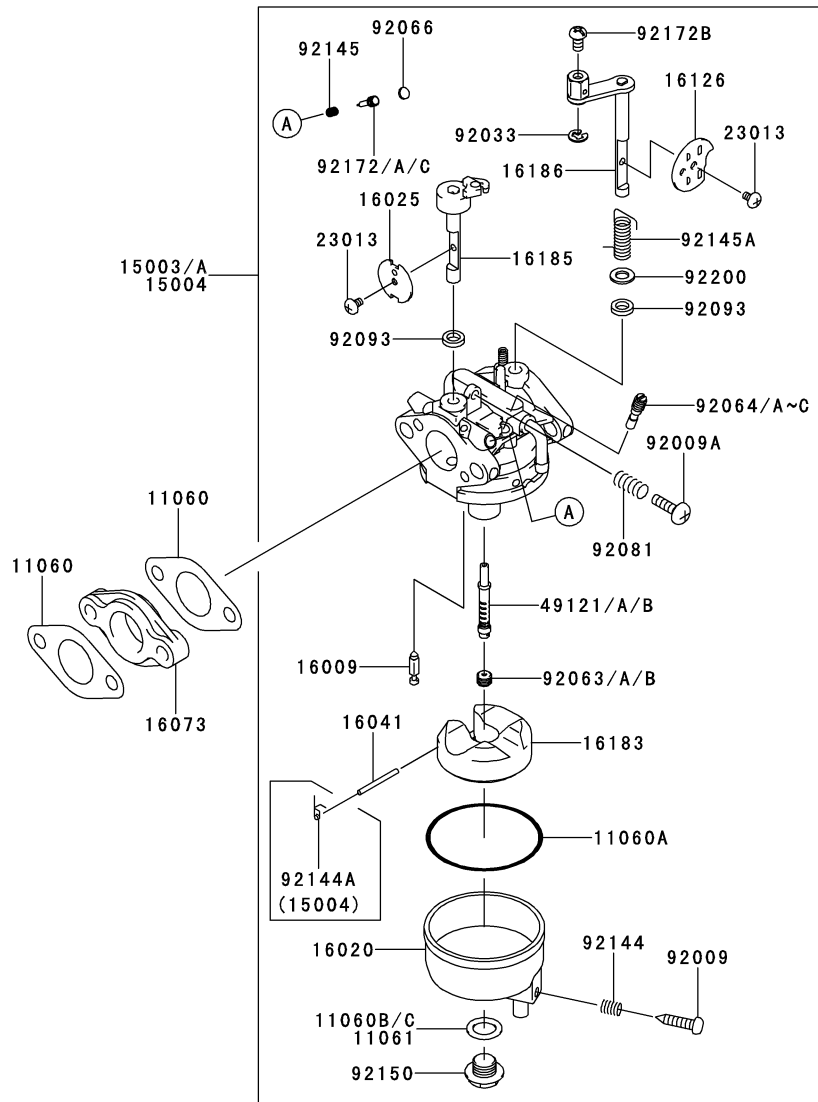
This catalog covers:

FJ100D- □ G81

This fig. covers:

08 CARBURETOR

E0180-B052A



Ref. No.	Part No.	Description	Quantity	
			A	B
92081	92081-2234	SPRING	1	1
92093	92093-2100	SEAL	2	2
92144	92144-2333	SPRING	1	1
92144A	92144-2335	SPRING		1
92145	92145-2122	SPRING	1	1
92145A	92145-2154	SPRING	1	1
92150	92150-2263	BOLT	1	1
92172	92172-2075	SCREW	1	
92172A	92172-2075	SCREW		*
92172B	92172-2092	SCREW	1	1
92172C	92172-2099	SCREW		1
92200	92200-2160	FJ100-028054 - WASHER	1	1

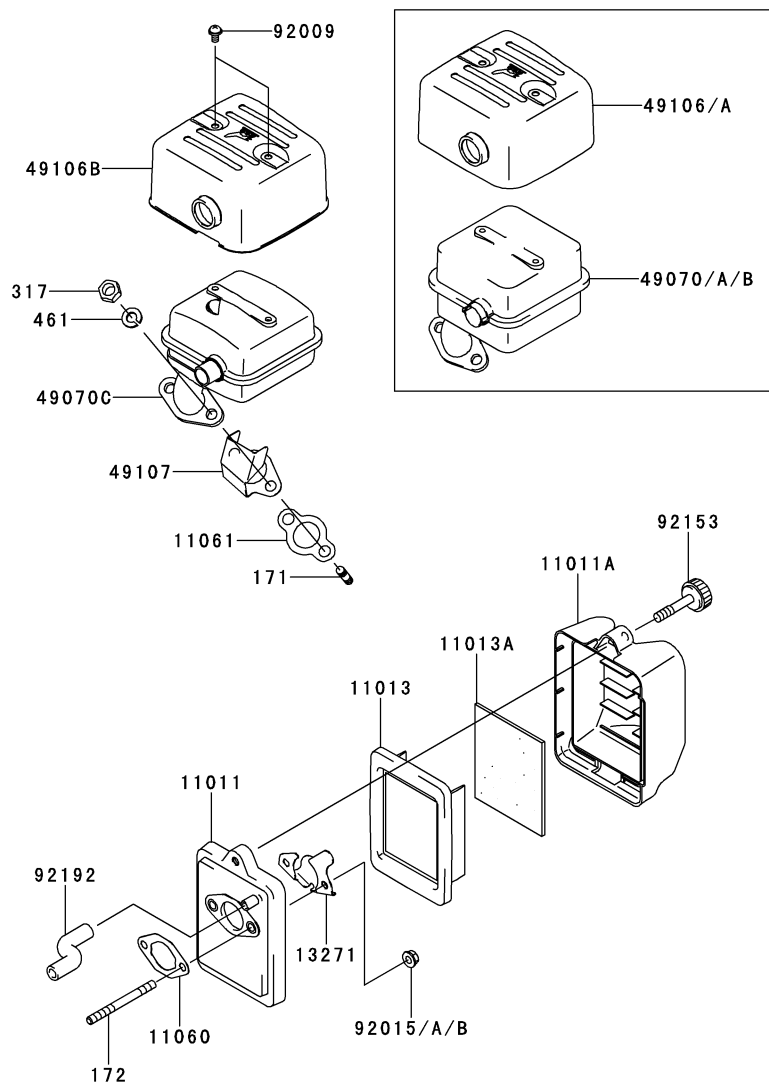
This catalog covers:

FJ100D- □ G81

This fig. covers:

09 AIR-FILTER/MUFFLER

E0190-B274B



Ref. No.	Part No.	Description	Quantity	
			A	B
11011	11011-2350	CASE-AIR FILTER	1	1
11011A	11011-2351	CASE-AIR FILTER	1	1
11013	11013-2214	ELEMENT-AIR FILTER	1	1
11013A	11013-2215	ELEMENT-AIR FILTER	1	1
11060	11060-2049	GASKET,AIR FILTER	1	1
11061	11061-2102	GASKET,MUFFLER	1	1
13271	13271-2239	PLATE	1	1
49070	49070-2746	MUFFLER-COMP	1	
49070A	49070-2746	MUFFLER-COMP		*
49070B	49070-2796	MUFFLER-COMP		*
49070C	49070-2798	MUFFLER-COMP		1
49106	49106-2667	COVER-MUFFLER	1	
49106A	49106-2667	COVER-MUFFLER		*
49106B	49106-2672	COVER-MUFFLER		1
49107	49107-2160	COVER-EXHAUST PIPE	1	1
92009	92009-2322	SCREW	2	2
92015	92015-1193	NUT	2	
92015A	92015-1193	NUT		*
92015B	92015-1367	NUT		2
92153	92153-2106	BOLT,6X30	1	1
92192	92192-2082	TUBE,7X12X77	1	1
171	171BA0816	BOLT-STUD,8X16	2	2
172	172BA0675	BOLT-STUD,6X75	2	2
317	317R0800	NUT-HEX-SMALL,8MM	2	2
461	461DA0800	WASHER-SPRING,8MM	2	2

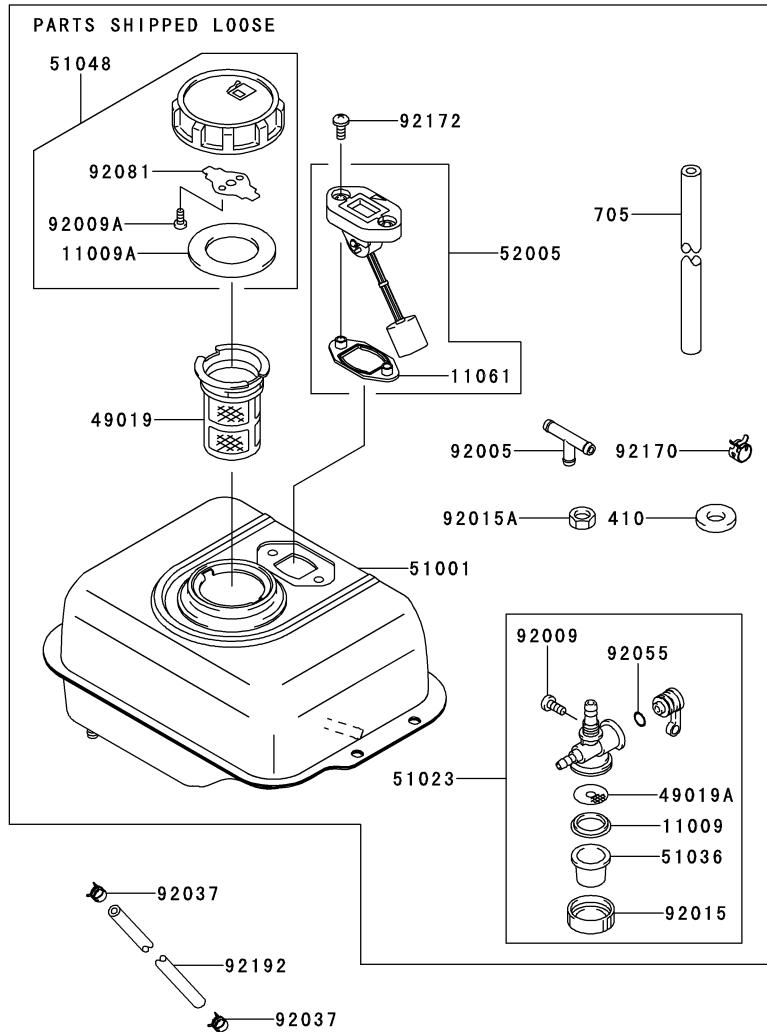
This catalog covers:

FJ100D- □ G81

This fig. covers:

10 FUEL-TANK/FUEL-VALVE

E0200-A491A



Ref. No.	Part No.	Description	Quantity	
			A	B
11009	11009-2021	GASKET	1	1
11009A	11009-2115	GASKET	1	1
11061	11061-2077	GASKET	1	1
49019	49019-2051	FILTER-FUEL	1	1
49019A	49019-2095	FILTER-FUEL	1	1
51001	51001-2322-9H	TANK-COMP-FUEL	1	1
51023	51023-2131	TAP-ASSY	1	1
51036	51036-2063	CUP,FUEL TAP	1	1
51048	51048-2055	CAP-ASSY-TANK	1	1
52005	52005-2139	GAUGE	1	1
92005	92005-1143	FITTING	1	1
92009	92009-2004	SCREW	1	1
92009A	92009-2021	SCREW	2	2
92015	92015-2007	NUT	1	1
92015A	92015-2317	NUT	1	1
92037	92037-2116	CLAMP	2	2
92055	92055-2002	RING-O	1	1
92081	92081-2036	SPRING	1	1
92170	92170-2082	CLAMP	6	6
92172	92172-2064	SCREW,5X12	2	2
92192	92192-2105	TUBE,4X8X300	1	1
410	410AA1000	WASHER-PLAIN-SMALL,10MM	1	1
705	705A061000	TUBE-BRAID	1	1

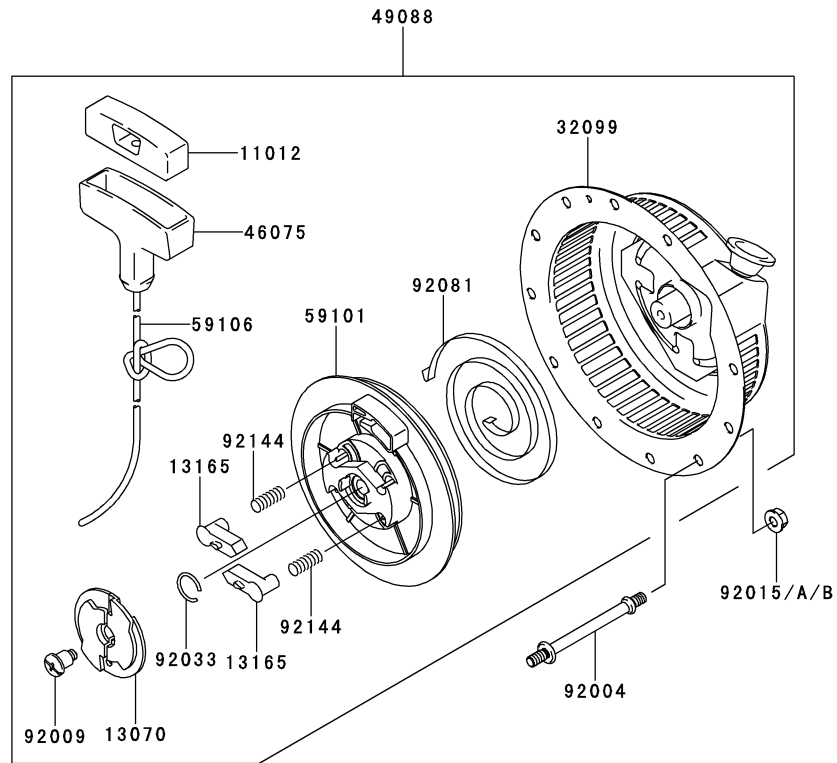
This catalog covers:

FJ100D- □ G81

This fig. covers:

11 STARTER

E0210-A348B



Ref. No.	Part No.	Description	Quantity	
			A	B
11012	11012-2255	CAP,GRIP	1	1
13070	13070-2114	GUIDE	1	1
13165	13165-2082	PAWL,RECOIL STARTER	2	2
32099	32099-2405-9H	CASE	1	1
46075	46075-2091	GRIP,RECOIL STARTER	1	1
49080	49080-2197	PULLEY-STARTING	1	1
49088	49088-2550-9H	STARTER-RECOIL	1	1
59101	59101-2122	REEL	1	1
59106	59106-2177	ROPE,4X1200+350	1	1
92004	92004-2160	STUD,6X78.7	3	3
92009	92009-2311	SCREW	1	1
92015	92015-1193	NUT	3	
92015A	92015-1193	NUT		*
92015B	92015-1367	NUT		3
92033	92033-2160	RING-SNAP	1	1
92081	92081-2265	SPRING,RECOIL	1	1
92144	92144-2177	SPRING,RETURN	2	2

This catalog covers:

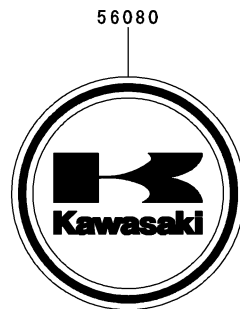
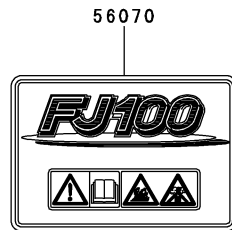
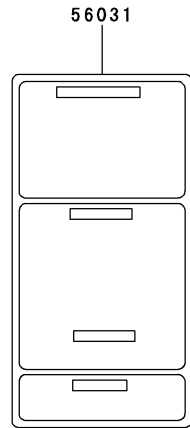
FJ100D- □ G81

This fig. covers:

12 LABEL

F0290-B263A

Ref. No.	Part No.	Description	Quantity	
			A	B
56031	56031-2488	LABEL-MANUAL	1	1
56070	56070-2071	LABEL-WARNING	1	1
56080	56080-2077	LABEL-BRAND	1	1



This catalog covers:

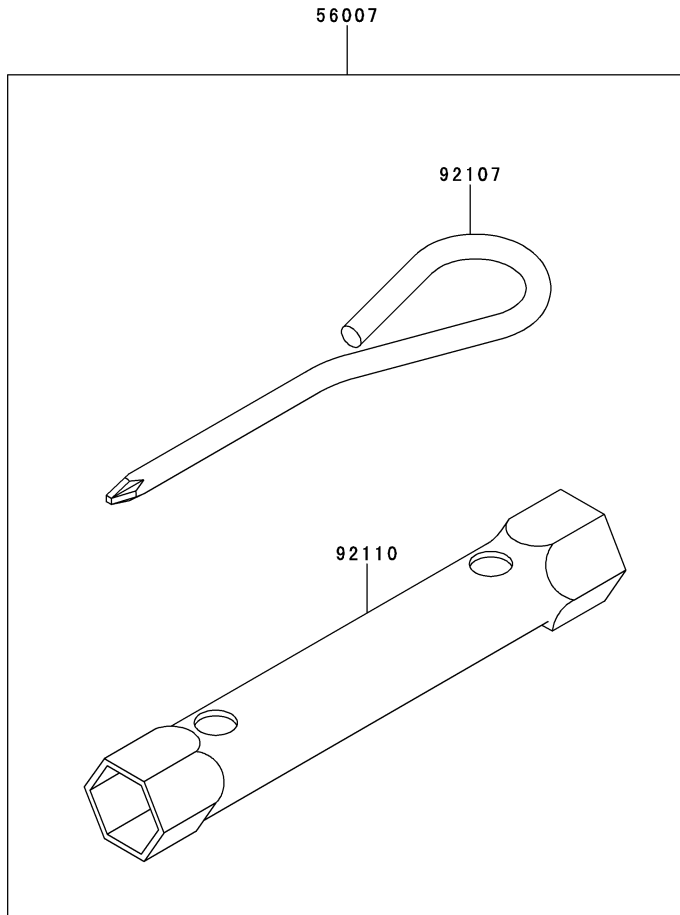
FJ100D- □ G81

This fig. covers:

13 TOOL

F0300-A001A

Ref. No.	Part No.	Description	Quantity	
			A	B
56007	56007-2051	TOOLKIT	1	1
92107	92107-2057	TOOL-DRIVER	1	1
92110	92110-2051	TOOL-WRENCH,19X21	1	1



This catalog covers:

FJ100D- □ G81

This fig. covers:

PART NAME INDEX

AIR-FILTER/MUFFLER	09
CARBURETOR	08
CARBURETOR	08
CONTROL-EQUIPMENT	07
COOLING-EQUIPMENT	05
CYLINDER/CRANKCASE	01
ELECTRIC-EQUIPMENT	06
FUEL-TANK/FUEL-VALVE	10
LABEL	12
LUBRICATION-EQUIPMENT	04
PISTON/CRANKSHAFT	02
STARTER	11
TOOL	13
VALVE/CAMSHAFT	03

This catalog covers:

FJ100D- □ G81

This fig. covers:

NUMERICAL PARTS INDEX

Part No.	Fig No.	Part No.	Fig No.	Part No.	Fig No.	Part No.	Fig No.	Part No.	Fig No.
11004-2143	01	16073-2225	08	56031-2488	12	92081-2234	08		
11004-2143	01	16115-2128	04	56070-2071	12	92081-2265	11		
11004-2147	01	16126-2051	01	56080-2077	12	92093-2100	08		
11008-2165	01	16126-2236	08	59041-2095	05	92107-2057	13		
11009-2021	10	16171-2099	07	59051-2375	02	92110-2051	13		
11009-2115	10	16183-2002	08	59066-2790	05	92141-2120	01		
11009-2175	04	16185-2044	08	59101-2122	11	92144-2177	11		
11011-2350	09	16186-2046	08	59106-2177	11	92144-2266	07		
11011-2351	09	171BA0816	09	601A6004	01	92144-2333	08		
11012-2255	11	172BA0675	09	670B2015	04	92144-2335	08		
11013-2214	09	21118-2094	03	705A061000	10	92145-2107	03		
11013-2215	09	21121-2101	06	92002-2269	07	92145-2122	08		
11022-2080	01	21194-2346	06	92004-2160	11	92145-2139	07		
11054-2051	07	23013-2058	08	92005-1143	10	92145-2139	07		
11060-2049	07	26011-2383	06	92009-2004	10	92145-2140	07		
11060-2049	09	311AA0600	07	92009-2021	10	92145-2154	08		
11060-2051	08	317R0800	09	92009-2311	11	92145-2163	07		
11060-2190	08	32099-2402	01	92009-2322	01	92150-2198	03		
11060-2191	08	32099-2403	01	92009-2322	09	92150-2263	08		
11060-2191	08	32099-2405-9H	11	92009-2348	08	92150-2288	07		
11061-2077	10	39003-2094	07	92009-2349	08	92151-2147	07		
11061-2100	01	39129-2114	07	92015-1193	09	92152-2082	05		
11061-2102	09	410AA1000	10	92015-1193	09	92153-2106	09		
11061-2104	01	411AA0600	07	92015-1193	10	92170-2082	10		
11061-2104	01	42036-2051	07	92015-1193	11	92172-2064	10		
11061-2181	08	46075-2091	11	92015-1367	09	92172-2075	08		
11061-2217	01	461DA0800	09	92015-1367	11	92172-2075	08		
12004-2118	03	49015-6278	01	92015-2007	10	92172-2092	08		
12005-2104	03	49015-6278	01	92015-2120	07	92172-2099	08		
12009-2062	03	49015-6302	01	92015-2240	03	92192-2082	09		
12016-2059	03	49019-2051	10	92015-2253	03	92192-2105	10		
12032-2065	03	49019-2095	10	92015-2317	10	92200-2029	07		
13001-2155	02	49070-2746	09	92033-2051	02	92200-2142	06		
13002-2083	02	49070-2746	09	92033-2082	08	92200-2158	07		
13008-2061	02	49070-2796	09	92033-2160	11	92200-2160	08		
13037-2581	02	49070-2798	09	92037-2116	10	99916-2175	01		
13070-2111	03	49078-2085	03	92037-2165	06				
13070-2114	11	49080-2197	11	92038-003	02				
130AA0520	06	49088-2550-9H	11	92038-003	06				
130AA0612	01	49103-2166	07	92043-1037	01				
130AA0612	07	49106-2667	09	92043-2089	03				
130BA0614	05	49106-2667	09	92043-2240	03				
130BA0625	02	49106-2672	09	92043-2242	03				
130BA0630	01	49107-2160	09	92049-2261	01				
130CA0825	06	49110-2101	07	92055-1343	01				
130CA0840	01	49113-2192	07	92055-2002	10				
130T0840	01	49118-2156	03	92059-2156	06				
130T0840	01	49120-6154	01	92063-2431	08				
13107-2301	03	49121-2256	08	92063-2431	08				
13116-2075	03	49121-2256	08	92063-2442	08				
13165-2082	11	49121-2262	08	92064-2134	08				
13251-2068	02	51001-2322-9H	10	92064-2146	08				
13271-2239	09	51023-2131	10	92064-2146	08				
15003-2995	08	51036-2063	10	92064-2147	08				
15003-2995	08	51048-2055	10	92066-0714	08				
15004-2016	08	52005-2139	10	92066-2203	04				
16009-2136	08	551A0612	01	92066-2203	04				
16020-2150	08	554DA0600	07	92066-2253	04				
16025-2166	08	555A0208	03	92070-2117	06				
16041-2224	08	56007-2051	13	92081-2036	10				