

This catalog covers:
FJ100D-□G81

This fig. covers:
TITLE

PARTS CATALOG

4-STROKE ENGINE

FJ100D

PRODUCT CODE	NOTE
FJ100D-KG81	POWER-CARRIER

This catalog covers:

FJ100D-□G81

PARTS CATALOG INTRODUCTION

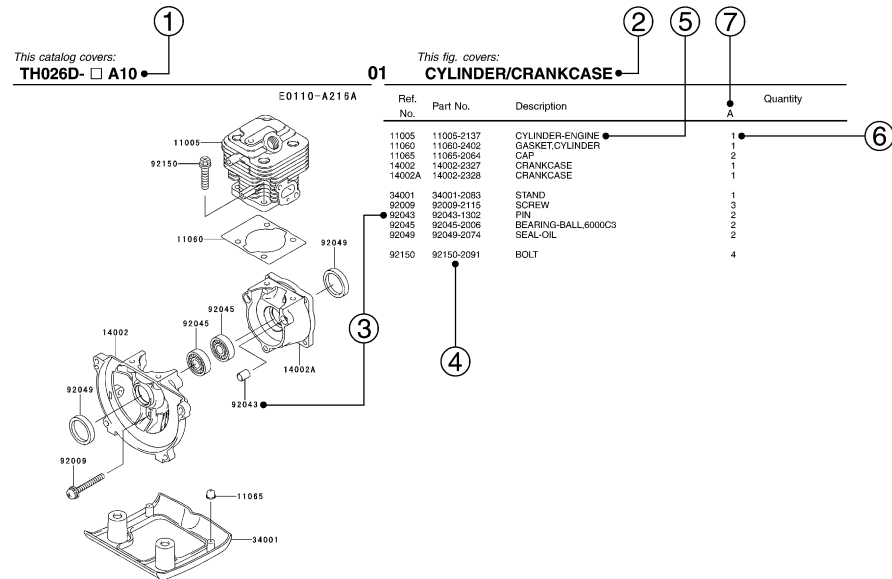
This parts catalog lists parts and sub-assemblies provided as service parts.

When it becomes necessary to replace parts, always use KAWASAKI GENUINE PARTS which have passed strict inspection which guarantees quality and performance.

1. HOW TO ORDER PARTS

- When ordering the parts, be sure to use the parts catalog corresponding to the product code. Check the product revision codes on the product and the catalog.
Product Code (example) : FA130D-**AA00**
└───┬─── Product Revision Code
- Specify the part code (all digits) exactly as listed in this catalog on your parts order.
- The parts not shown in the illustrations of this catalog are not sold separately; only the complete units or next higher assemblies illustrated are supplied as the service parts.

2. EXPLANATION OF PARTS CATALOG FORMAT



1) Product Code

This code describes the product code covered by this catalog. The product revision code, which is a part of the product code, is omitted.

2) Part Group Title

This title is the representative name for the group of parts illustrated on the page.

3) Reference Number

The reference numbers are shown on the illustration and the list as the link between them.

This fig. covers:

PARTS LIST INFORMATION

4) Part Number

This is the key of your parts ordering.

Three kinds of part number are used in this catalog.

- Structure 1
□□□□□□-□□□□□□-□□
□□□□□□-□□□□□□
└───┬─── Part Revision Code
- Structure 2
□□□□□□-□□□□□□-□□
└───┬─── Color Code for Painted Part
- Standard Hardware Number
 (for bolts, nuts, washer, or the like)
□□□□□□□□
└───┬───┬───┬───┬───┬───
Size Code
Material and Surface Treatment Code
Item Code

5) Description and Additional Information

The part name, the location, the size, and the serial number as additional information, etc. are described here. Use them to find out and check the part required.

When a part number is changed without change of the product revision code and the changed parts are not interchangeable, the serial number of the product is noted as follows;

- (- FA130 - 100001) : Affected units are from beginning of the product of the product code up to and including this serial number.
- (FA130 - 100002 -) : Affected units are from this serial number and above.
- (FA130 - 100002 - FA130 - 110001) : Affected units are in this serial number range.

6) Quantity

The figure shows quantity of the part required at the indicated position on the illustration and for the specified product revision code.

The asterisk (*) on this column means the part can be used as the substitute on the product and is supplied until the stock is exhausted.

Note: Some small parts will be supplied by units.

Example: If six (6) bolts are ordered and the minimum quantity per unit is five (5), two (2), units of the bolt will be delivered.

7) Product Revision Code

This Code indicates an important change which affects the service parts interchangeability.

3. ABBREVIATIONS

#	Number	FR.....	Front	RH	Right Hand
&.....	And	G	Gram	RPM ...	Revolutions Per Minute
(+).....	Plus	HEX.....	Hexagonal	RR	Rear
(-).....	Minus	ID=.....	Inside Diameter	STD.....	Standard
2ND.....	Second	IN.....	Inch	T.....	Teeth
3RD	Third	L=.....	Length	T=.....	Thickness
4TH.....	Fourth	LH.....	Left Hand	U/S.....	Under Size
A.....	Ampere	LWR	Lower	UPP	Upper
AR.....	As Required	MM.....	Millimeter	V.....	Volt
ASSY.....	Assembly	O/S.....	Over Size	W.....	Watt
CNT	Center	OD=.....	Outside Diameter		
COMP.....	Complete	REF.....	Reference		

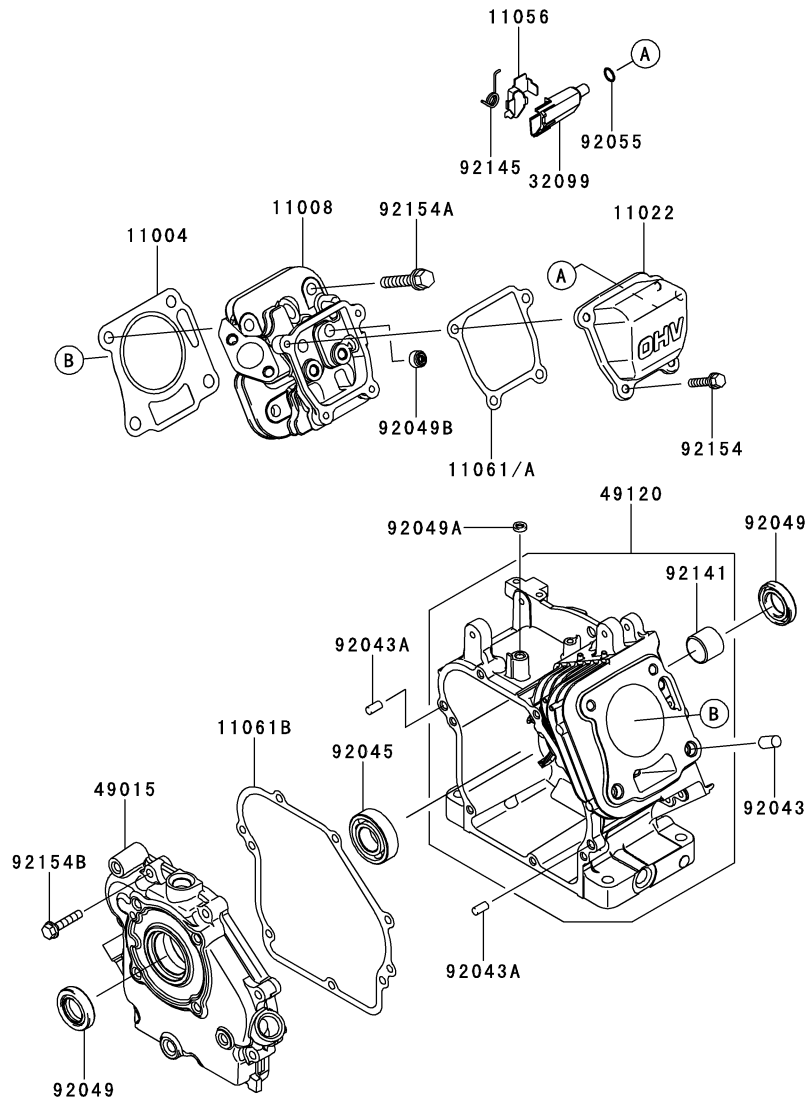
This catalog covers:

FJ100D- □ G81

This fig. covers:

01 CYLINDER/CRANKCASE

E0110-A777B



Ref. No.	Part No.	Description	Quantity
11004	11004-0716	GASKET-HEAD	1
11008	11008-2177	HEAD-COMP-CYLINDER	1
11022	11022-0018	CASE-ROCKER	1
11056	11056-2042	BRACKET	1
11061	11061-0860	GASKET,CASE-ROCKER	*
11061A	11061-0906	GASKET,CASE-ROCKER	1
11061B	11061-2232	GASKET	1
32099	32099-0728	CASE	1
49015	49015-6315	COVER-CRANKCASE	1
49120	49120-6195	CRANKCASE-COMP	1
92043	92043-2261	PIN,10X12	2
92043A	92043-2263	PIN,6X12	2
92045	92045-0072	BEARING-BALL,6004UR	1
92049	92049-2261	SEAL-OIL,ISD 20X35X8AE	2
92049A	92049-2273	SEAL-OIL,6X10X2.5	1
92049B	92049-2279	SEAL-OIL	1
92055	92055-0707	RING-O	1
92141	92141-2120	BEARING-PLANE	1
92145	92145-0928	SPRING	1
92154	92154-2003	BOLT,6X12	4
92154A	92154-2032	BOLT	4
92154B	92154-2052	BOLT	7

This catalog covers:

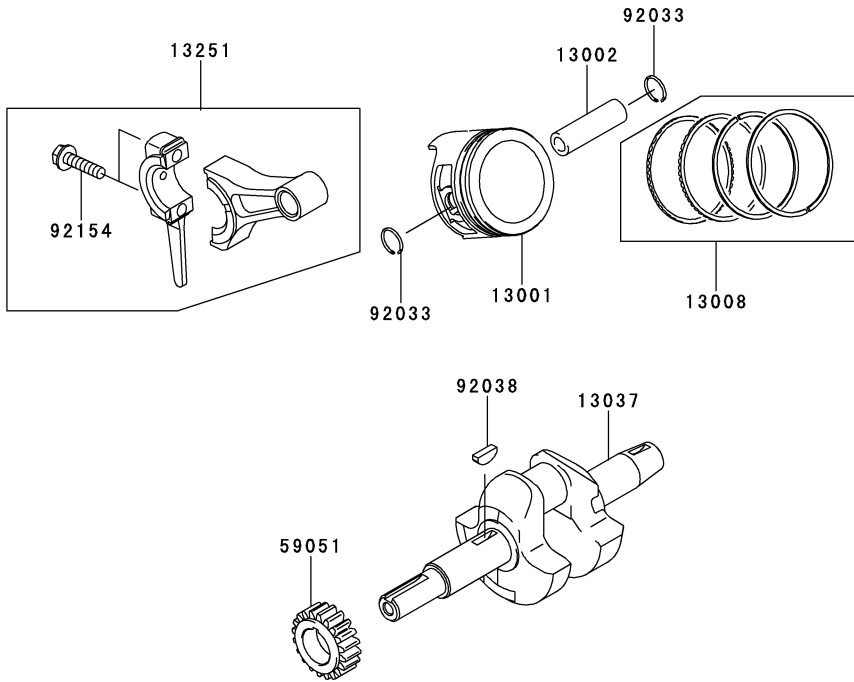
FJ100D- □ G81

This fig. covers:

02 PISTON/CRANKSHAFT

E0120-A467A

Ref. No.	Part No.	Description	Quantity
13001	13001-2195	PISTON-ENGINE	1
13002	13002-2104	PIN-PISTON	1
13008	13008-2063	RING-SET-PISTON	1
13037	13037-0739	CRANKSHAFT	1
13251	13251-2085	ROD-ASSY-CONNECTING	1
59051	59051-2385	GEAR-SPUR	1
92033	92033-2201	RING-SNAP	2
92038	92038-2108	KEY	1
92154	92154-2011	BOLT,6X25	2



This catalog covers:

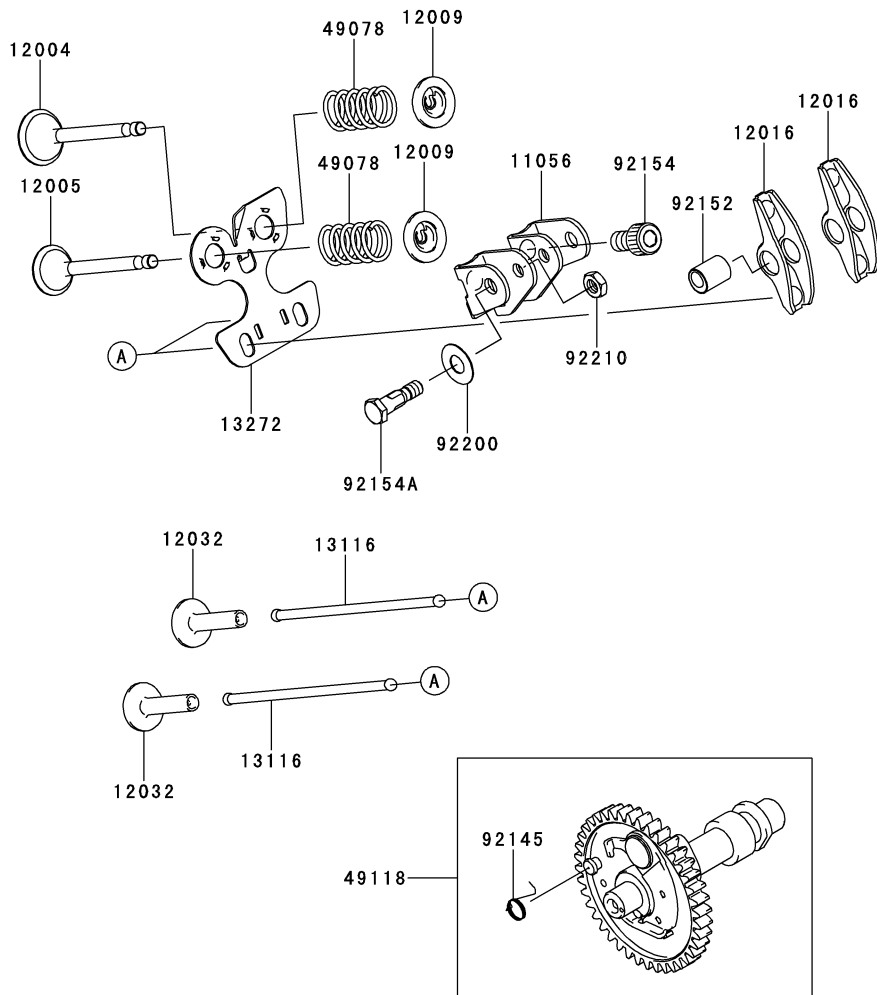
FJ100D- □ G81

03

This fig. covers:

VALVE/CAMSHAFT

E0130-A209A



Ref. No.	Part No.	Description	Quantity
11056	11056-1174	BRACKET	1
12004	12004-2121	VALVE-INTAKE,IN	1
12005	12005-2106	VALVE-EXHAUST,EX	1
12009	12009-2062	RETAINER-VALVE SPRING	2
12016	12016-2070	ARM-ROCKER	2
12032	12032-2074	TAPPET	2
13116	13116-2077	ROD-PUSH	2
13272	13272-2040	PLATE	1
49078	49078-2090	SPRING-ENGINE VALVE	2
49118	49118-2163	CAMSHAFT-COMP	1
92145	92145-2194	SPRING	1
92152	92152-2099	COLLAR	2
92154	92154-2034	BOLT,8X14	2
92154A	92154-2035	BOLT,6X24	2
92200	92200-2194	WASHER,8.1X18X0.5	2
92210	92210-2133	NUT,6MM	2

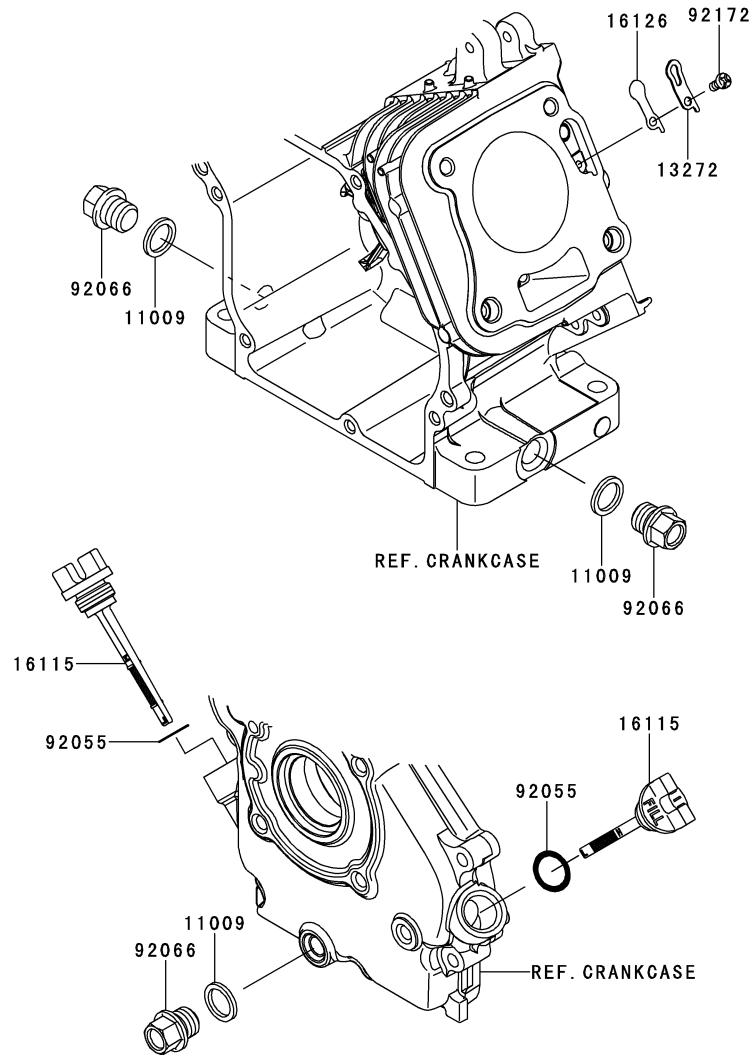
This catalog covers:

FJ100D- □ G81

This fig. covers:

04 LUBRICATION-EQUIPMENT

E0140-A538A



Ref. No.	Part No.	Description	K	Quantity
11009	11009-2175	GASKET,14.2X19X2	3	
13272	13272-2041	PLATE	1	
16115	16115-2130	CAP-OIL FILLER	2	
16126	16126-2249	VALVE	1	
92055	92055-2219	RING-O	2	
92066	92066-2253	PLUG,14X12	3	
92172	92172-2103	SCREW,4X8	1	

This catalog covers:

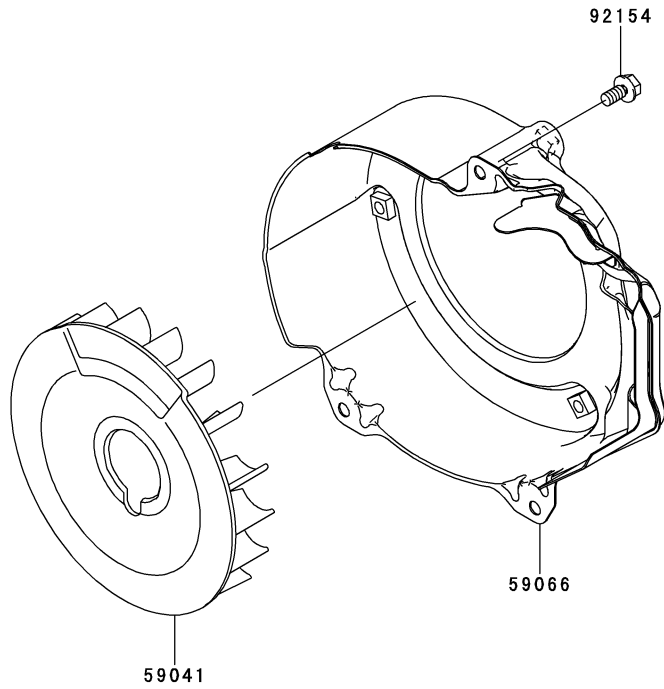
FJ100D- □ G81

This fig. covers:

05 COOLING-EQUIPMENT

E0150-B092A

Ref. No.	Part No.	Description	K	Quantity
59041	59041-2100	FAN	1	
59066	59066-2820	HOUSING-FAN	1	
92154	92154-2003	BOLT,6X12	3	



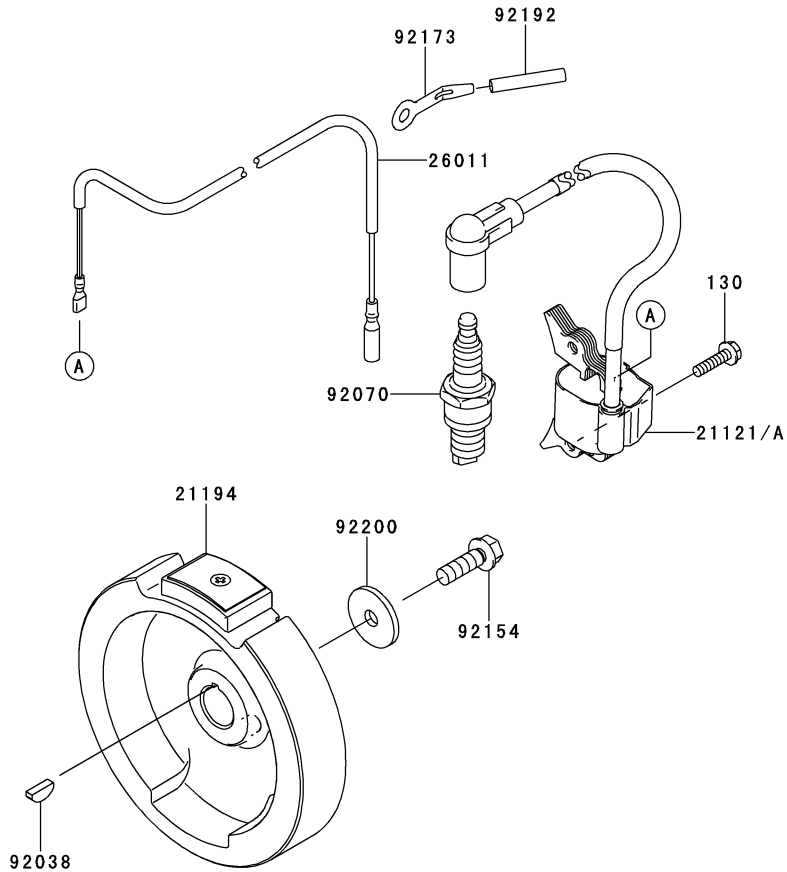
This catalog covers:

FJ100D- □ G81

This fig. covers:

06 ELECTRIC-EQUIPMENT

E0160-B676A



Ref. No.	Part No.	Description	K	Quantity
21121	21121-0712	COIL-IGNITION	1	
21121A	21121-2108	COIL-IGNITION	*	
21194	21194-2361	FLYWHEEL-COMP	1	
26011	26011-0731	WIRE-LEAD	1	
92038	92038-2108	KEY	1	
92070	92070-0703	PLUG-SPARK,BR6HS	1	
92154	92154-2039	BOLT,8X25	1	
92173	92173-0771	CLAMP	1	
92192	92192-0987	TUBE,5X6X35	1	
92200	92200-2142	WASHER	1	
130	130BA0520	BOLT-FLANGED,5X20	2	

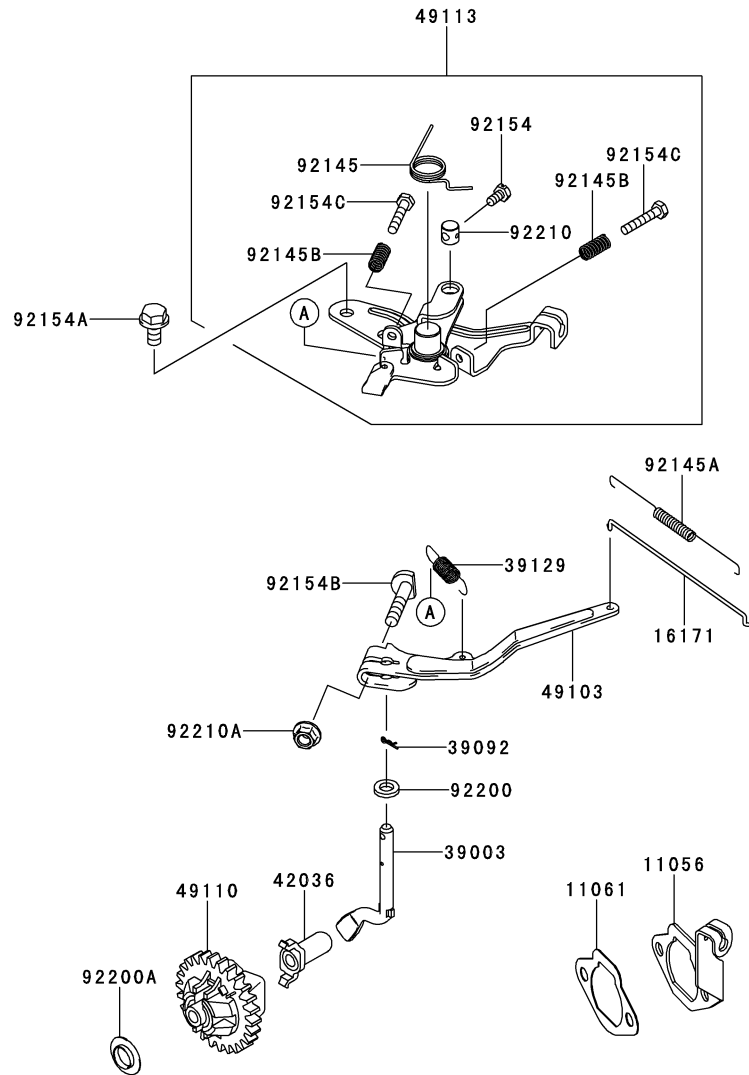
This catalog covers:

FJ100D- □ G81

This fig. covers:

07 CONTROL-EQUIPMENT

E0170-A792A



Ref. No.	Part No.	Description	Quantity
11056	11056-1030	BRACKET	1
11061	11061-2229	GASKET	1
16171	16171-2110	LINK	1
39003	39003-2097	ARM-PIVOT	1
39092	39092-2055	PIN-HAIR	1
39129	39129-2130	SPRING-GOVERNOR	1
42036	42036-2051	SLEEVE	1
49103	49103-2178	ARM-GOVERNOR	1
49110	49110-2103	GOVERNOR-ASSY	1
49113	49113-0714	PANEL-COMP-CONTROL	1
92145	92145-0847	SPRING	1
92145A	92145-2195	SPRING	1
92145B	92145-2204	SPRING	2
92154	92154-0764	BOLT,4X8	1
92154A	92154-2003	BOLT,6X12	2
92154B	92154-2018	BOLT,6X28	1
92154C	92154-2043	BOLT,4X22	2
92200	92200-2184	WASHER,6.5X11.5X2	1
92200A	92200-2196	WASHER,10.5X19X2	1
92210	92210-0730	NUT	1
92210A	92210-2121	NUT,M6	1

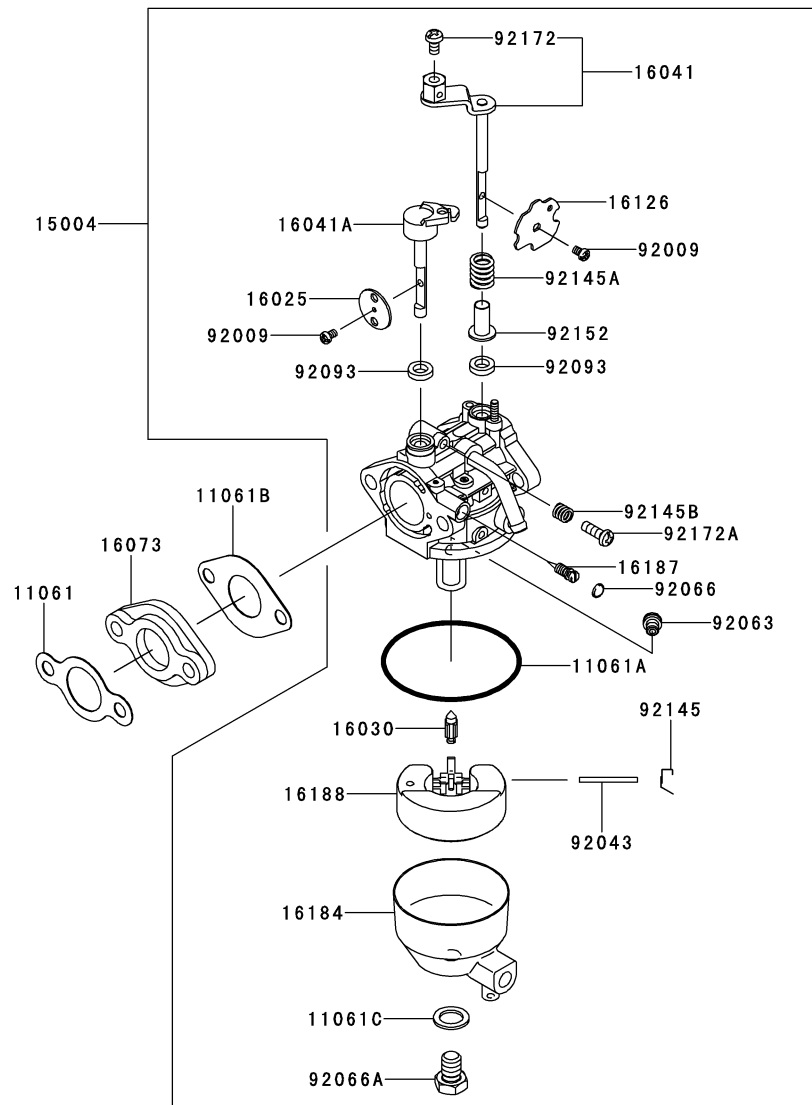
This catalog covers:

FJ100D- □ G81

This fig. covers:

08 CARBURETOR

E0180-A999A



Ref. No.	Part No.	Description	Quantity
11061	11061-2231	GASKET,HEAD-INSULATOR	1
11061A	11061-2238	GASKET	1
11061B	11061-2239	GASKET,CARB-INSULATOR	1
11061C	11061-7054	GASKET,CENTER POST	1
15004	15004-0721	CARBURETOR-ASSY	1
16025	16025-0555	VALVE-THROTTLE	1
16030	16030-7004	VALVE-FLOAT	1
16041	16041-0015	SHAFT-CARBURETOR	1
16041A	16041-2267	SHAFT-CARBURETOR	1
16073	16073-2243	INSULATOR	1
16126	16126-0707	VALVE	1
16184	16184-0004	CHAMBER-ASSY-FLOAT	1
16187	16187-7001	NEEDLE-JET	1
16188	16188-2001	FLOAT	1
92009	92009-2049	SCREW	2
92043	92043-2174	PIN	1
92063	92063-0026	JET-MAIN,#64	1
92066	92066-7009	PLUG,EXPANSION	1
92066A	92066-7020	PLUG	1
92093	92093-2135	SEAL	2
92145	92145-0890	SPRING	1
92145A	92145-0970	SPRING	1
92145B	92145-2202	SPRING	1
92152	92152-1743	COLLAR	1
92172	92172-0848	SCREW	1
92172A	92172-2132	SCREW	1

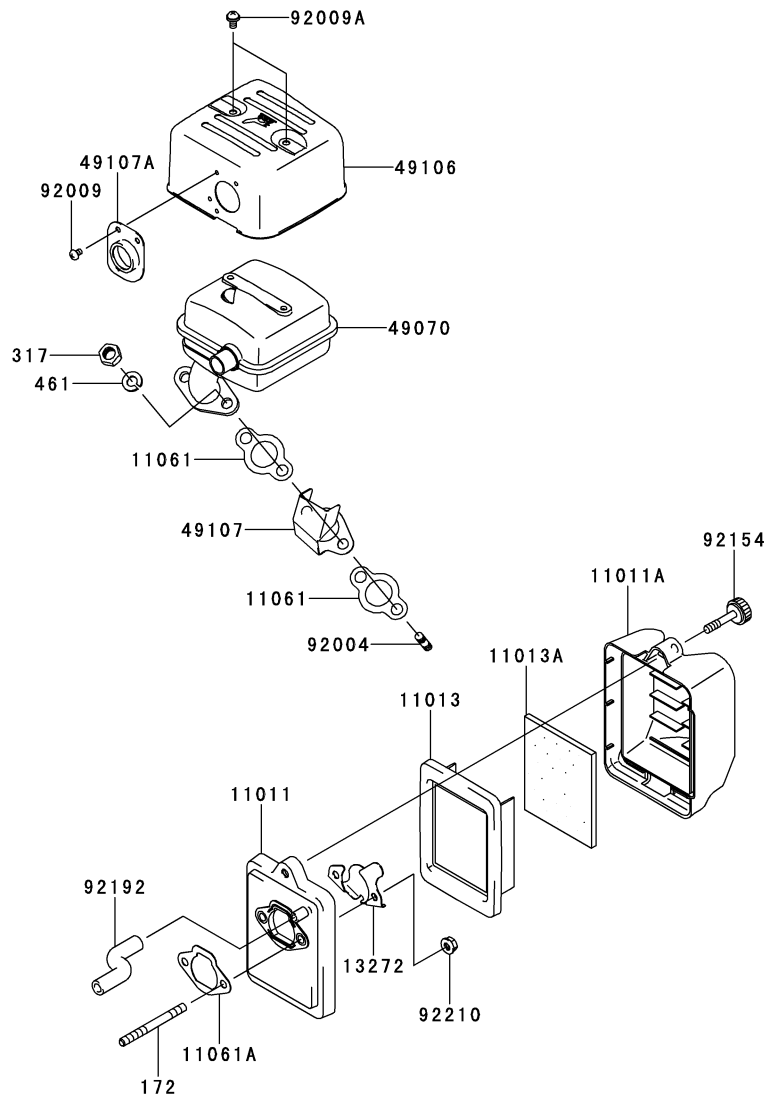
This catalog covers:

FJ100D- □ G81

This fig. covers:

09 AIR-FILTER/MUFFLER

E0190-B406A



Ref. No.	Part No.	Description	Quantity
11011	11011-2386	CASE-AIR FILTER,CASE	1
11011A	11011-2387	CASE-AIR FILTER,COVER	1
11013	11013-2240	ELEMENT-AIR FILTER,PAPER	1
11013A	11013-2241	ELEMENT-AIR FILTER	1
11061	11061-2102	GASKET,MUFFLER	2
11061A	11061-2229	GASKET	1
13272	13272-2039	PLATE	1
49070	49070-2798	MUFFLER-COMP	1
49106	49106-0708	COVER-MUFFLER	1
49107	49107-0719	COVER-EXHAUST PIPE	1
49107A	49107-0720	COVER-EXHAUST PIPE	1
92004	92004-2166	STUD,8X26	2
92009	92009-2106	SCREW	3
92009A	92009-2322	SCREW	2
92154	92154-2033	BOLT	1
92192	92192-0976	TUBE,7X12X72	1
92210	92210-2121	NUT,M6	2
172	172BA0675	BOLT-STUD,6X75	2
317	317R0800	NUT-HEX-SMALL,8MM	2
461	461DA0800	WASHER-SPRING,8MM	2

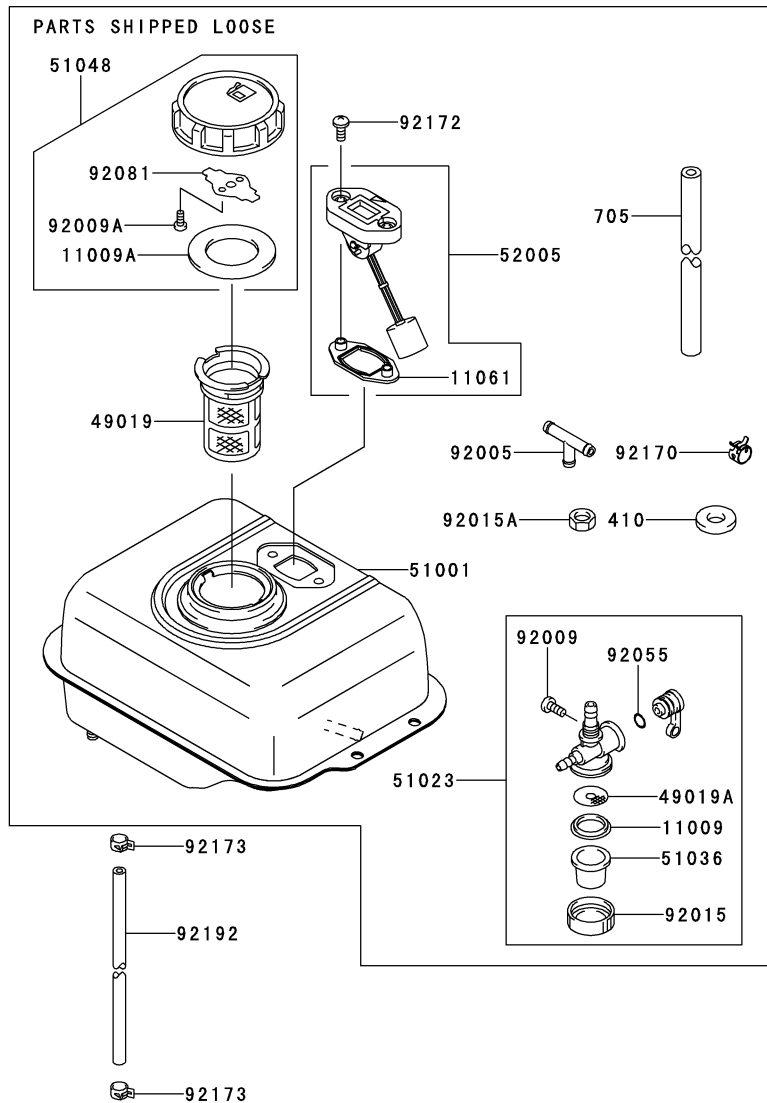
This catalog covers:

FJ100D- □ G81

This fig. covers:

10 FUEL-TANK/FUEL-VALVE

E0200-A870A



Ref. No.	Part No.	Description	Quantity
11009	11009-2021	GASKET	1
11009A	11009-2115	GASKET	1
11061	11061-2077	GASKET	1
49019	49019-2051	FILTER-FUEL	1
49019A	49019-2095	FILTER-FUEL	1
51001	51001-2322-9H	TANK-COMP-FUEL	1
51023	51023-2176	TAP-ASSY	1
51036	51036-2063	CUP,FUEL TAP	1
51048	51048-2055	CAP-ASSY-TANK	1
52005	52005-2139	GAUGE	1
92005	92005-1143	FITTING	1
92009	92009-2004	SCREW	1
92009A	92009-2021	SCREW	2
92015	92015-2007	NUT	1
92015A	92015-2317	NUT	1
92055	92055-2002	RING-O	1
92081	92081-2036	SPRING	1
92170	92170-2082	CLAMP	6
92172	92172-2064	SCREW,5X12	2
92173	92173-2004	CLAMP	2
92192	92192-2105	TUBE,4X8X300	1
410	410AA1000	WASHER-PLAIN-SMALL,10MM	1
705	705A061000	TUBE-BRAID	1

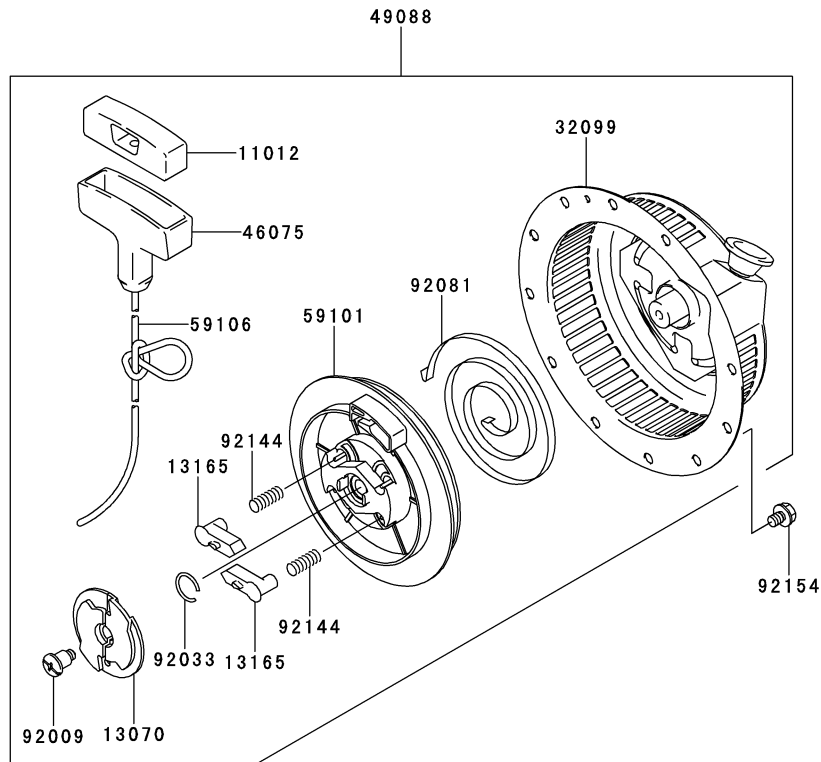
This catalog covers:

FJ100D- □ G81

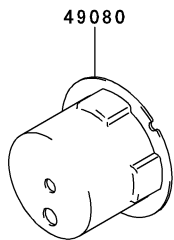
This fig. covers:

11 STARTER

E0210-A639A



Ref. No.	Part No.	Description	Quantity
11012	11012-2255	CAP, GRIP	1
13070	13070-2114	GUIDE	1
13165	13165-2082	PAWL, RECOIL STARTER	2
32099	32099-2405-9H	CASE	1
46075	46075-2091	GRIP, RECOIL STARTER	1
49080	49080-0709	PULLEY-STARTING	1
49088	49088-2550-9H	STARTER-RECOIL	1
59101	59101-2122	REEL	1
59106	59106-2177	ROPE, 4X1200+350	1
92009	92009-2311	SCREW	1
92033	92033-2160	RING-SNAP	1
92081	92081-2265	SPRING, RECOIL	1
92144	92144-2177	SPRING, RETURN	2
92154	92154-2044	BOLT, 6X8	3



This catalog covers:

FJ100D- □ G81

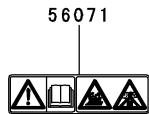
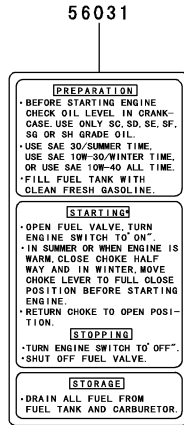
12

This fig. covers:

LABEL

F0290-B915A

Ref. No.	Part No.	Description	Quantity
56031	56031-2488	LABEL-MANUAL	1
56071	56071-2010	LABEL-WARNING	1
56080	56080-0787	LABEL-BRAND	1



This catalog covers:

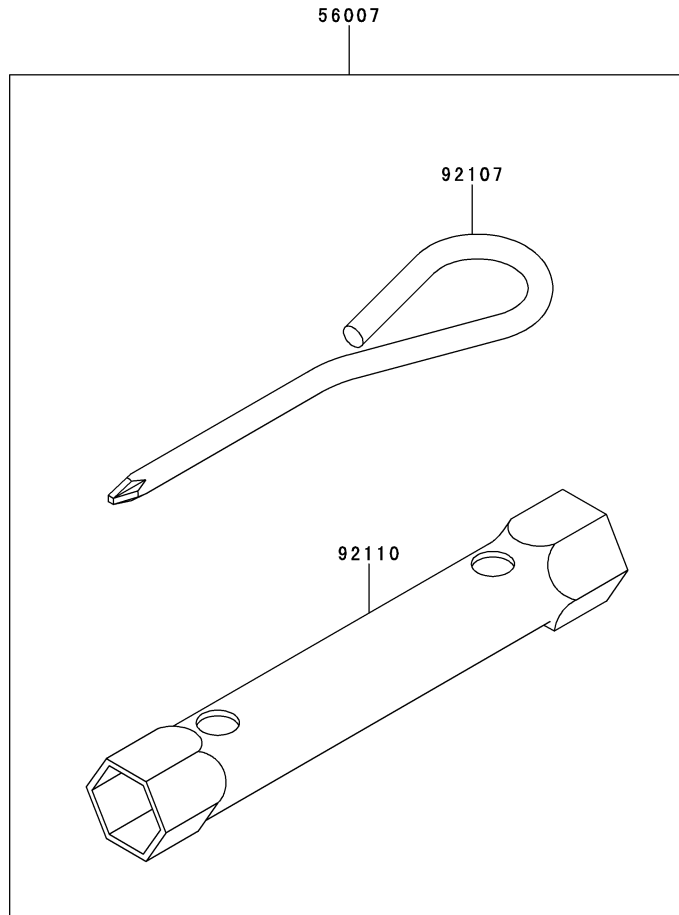
FJ100D- □ G81

This fig. covers:

13 TOOL

F0300-A001A

Ref. No.	Part No.	Description	K	Quantity
56007	56007-2051	TOOLKIT	1	
92107	92107-2057	TOOL-DRIVER	1	
92110	92110-2051	TOOL-WRENCH,19X21	1	



This catalog covers:

FJ100D- □ G81

This fig. covers:

PART NAME INDEX

AIR-FILTER/MUFFLER	09
CARBURETOR	08
CONTROL-EQUIPMENT	07
COOLING-EQUIPMENT	05
CYLINDER/CRANKCASE	01
ELECTRIC-EQUIPMENT	06
FUEL-TANK/FUEL-VALVE	10
LABEL	12
LUBRICATION-EQUIPMENT	04
PISTON/CRANKSHAFT	02
STARTER	11
TOOL	13
VALVE/CAMSHAFT	03

This catalog covers:

FJ100D- □ G81

This fig. covers:

NUMERICAL PARTS INDEX

Part No.	Fig No.	Part No.	Fig No.	Part No.	Fig No.	Part No.	Fig No.	Part No.	Fig No.
11004-0716	01	317R0800	09	92049-2279	01				
11008-2177	01	32099-0728	01	92055-0707	01				
11009-2021	10	32099-2405-9H	11	92055-2002	10				
11009-2115	10	39003-2097	07	92055-2219	04				
11009-2175	04	39092-2055	07	92063-0026	08				
11011-2386	09	39129-2130	07	92066-2253	04				
11011-2387	09	410AA1000	10	92066-7009	08				
11012-2255	11	42036-2051	07	92066-7020	08				
11013-2240	09	46075-2091	11	92070-0703	06				
11013-2241	09	461DA0800	09	92081-2036	10				
11022-0018	01	49015-6315	01	92081-2265	11				
11056-1030	07	49019-2051	10	92093-2135	08				
11056-1174	03	49019-2095	10	92107-2057	13				
11056-2042	01	49070-2798	09	92110-2051	13				
11061-0860	01	49078-2090	03	92141-2120	01				
11061-0906	01	49080-0709	11	92144-2177	11				
11061-2077	10	49088-2550-9H	11	92145-0847	07				
11061-2102	09	49103-2178	07	92145-0890	08				
11061-2229	07	49106-0708	09	92145-0928	01				
11061-2229	09	49107-0719	09	92145-0970	08				
11061-2231	08	49107-0720	09	92145-2194	03				
11061-2232	01	49110-2103	07	92145-2195	07				
11061-2238	08	49113-0714	07	92145-2202	08				
11061-2239	08	49118-2163	03	92145-2204	07				
11061-7054	08	49120-6195	01	92152-1743	08				
12004-2121	03	51001-2322-9H	10	92152-2099	03				
12005-2106	03	51023-2176	10	92154-0764	07				
12009-2062	03	51036-2063	10	92154-2003	01				
12016-2070	03	51048-2055	10	92154-2003	05				
12032-2074	03	52005-2139	10	92154-2003	07				
13001-2195	02	56007-2051	13	92154-2011	02				
13002-2104	02	56031-2488	12	92154-2018	07				
13008-2063	02	56071-2010	12	92154-2032	01				
13037-0739	02	56080-0787	12	92154-2033	09				
13070-2114	11	59041-2100	05	92154-2034	03				
130BA0520	06	59051-2385	02	92154-2035	03				
13116-2077	03	59066-2820	05	92154-2039	06				
13165-2082	11	59101-2122	11	92154-2043	07				
13251-2085	02	59106-2177	11	92154-2044	11				
13272-2039	09	705A061000	10	92154-2052	01				
13272-2040	03	92004-2166	09	92170-2082	10				
13272-2041	04	92005-1143	10	92172-0848	08				
15004-0721	08	92009-2004	10	92172-2064	10				
16025-0555	08	92009-2021	10	92172-2103	04				
16030-7004	08	92009-2049	08	92172-2132	08				
16041-0015	08	92009-2106	09	92173-0771	06				
16041-2267	08	92009-2311	11	92173-2004	10				
16073-2243	08	92009-2322	09	92192-0976	09				
16115-2130	04	92015-2007	10	92192-0987	06				
16126-0707	08	92015-2317	10	92192-2105	10				
16126-2249	04	92033-2160	11	92200-2142	06				
16171-2110	07	92033-2201	02	92200-2184	07				
16184-0004	08	92038-2108	02	92200-2194	03				
16187-7001	08	92038-2108	06	92200-2196	07				
16188-2001	08	92043-2174	08	92210-0730	07				
172BA0675	09	92043-2261	01	92210-2121	07				
21121-0712	06	92043-2263	01	92210-2121	09				
21121-2108	06	92045-0072	01	92210-2133	03				
21194-2361	06	92049-2261	01						
26011-0731	06	92049-2273	01						