

This catalog covers:
FS691V-□G80

This fig. covers:
TITLE

PARTS CATALOG

4-STROKE ENGINE

FS691V

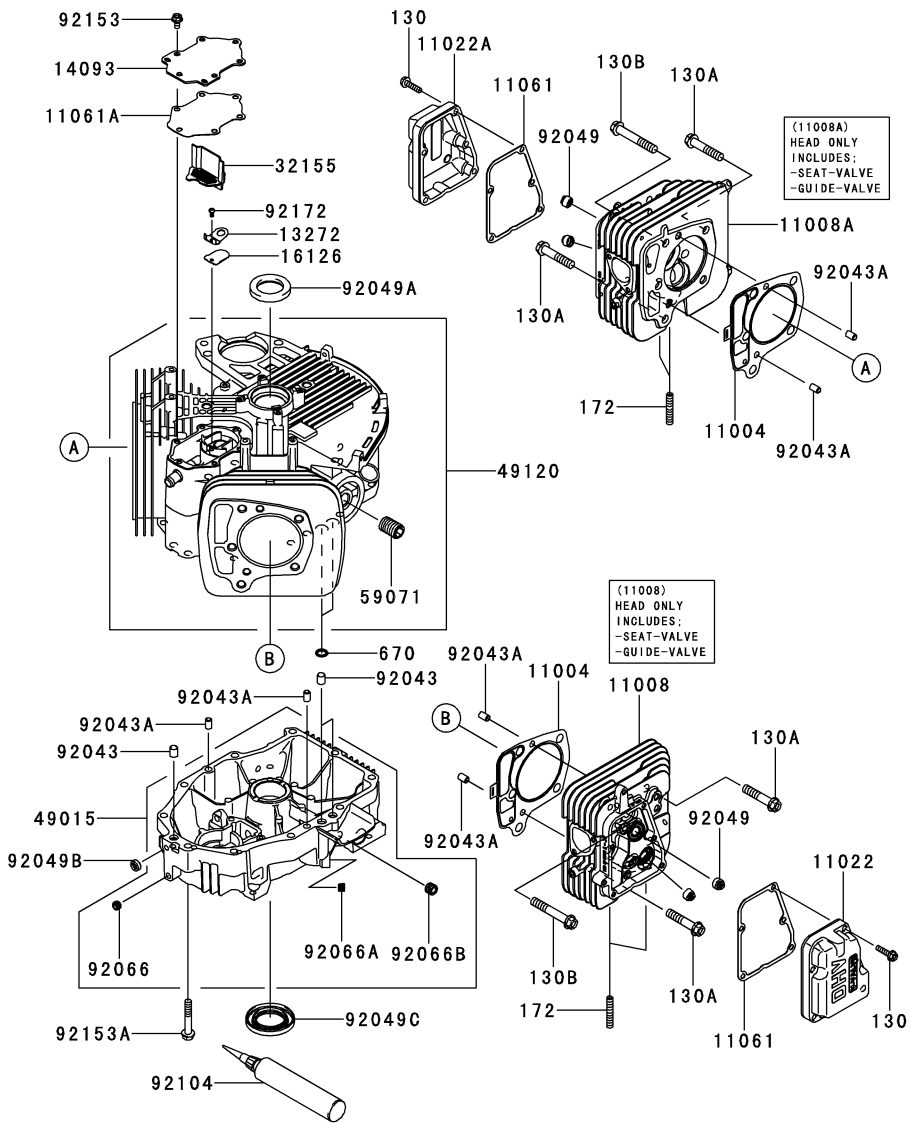
PRODUCT CODE	NOTE
FS691V-AG80	RM982F.983F
FS691V-BG80	

This catalog covers:
FS691V- □ G80

01 CYLINDER/CRANKCASE

This fig. covers:

E0110-A940A



Ref. No.	Part No.	Description	Quantity
11004	11004-7026	GASKET-HEAD	2
11008	11008-0845	HEAD-COMP-CYLINDER,#2	1
11008A	11008-0861	HEAD-COMP-CYLINDER,#1	1
11022	11022-0038	CASE-ROCKER,#2	1
11022A	11022-0710	CASE-ROCKER,#1	1
11061	11061-7083	GASKET,CASE-ROCKER	2
11061A	11061-7094	GASKET,BREATHER	1
13272	13272-1374	PLATE	1
14093	14093-0455	COVER,BREATHER	1
16126	16126-7020	VALVE,BREATHER	1
32155	32155-7003	PIPE,BREATHER	1
49015	49015-0023	COVER-CRANKCASE	1
49120	49120-0858	CRANKCASE-COMP	1
59071	59071-0733	JOINT	1
92043	92043-0858	PIN	3
92043A	92043-1263	PIN,6.2X8X14	6
92049	92049-7001	SEAL-OIL,RVC2 6X11X10.2	4
92049A	92049-7010	SEAL-OIL,SD 35X48X8 R HS	1
92049B	92049-7019	SEAL-OIL,SO 8X14X5 HS	1
92049C	92049-7028	SEAL-OIL,38X62X8MTCLV	1
92066	92066-0761	PLUG	1
92066A	92066-0762	PLUG	1
92066B	92066-2223	PLUG	1
92104	92104-0007	GASKET-LIQUID,TB1217H	AR
92153	92153-7043	BOLT,6X12	6
92153A	92153-7054	BOLT,8X50	10
92172	92172-0870	SCREW,4X8	1
130	130BA0625	BOLT-FLANGED,6X25	10
130A	130CA1050	BOLT-FLANGED,10X50	4
130B	130CA1065	BOLT-FLANGED,10X65	6
172	172BA0822	BOLT-STUD,8X22	4
670	670B2011	O RING,11MM	2

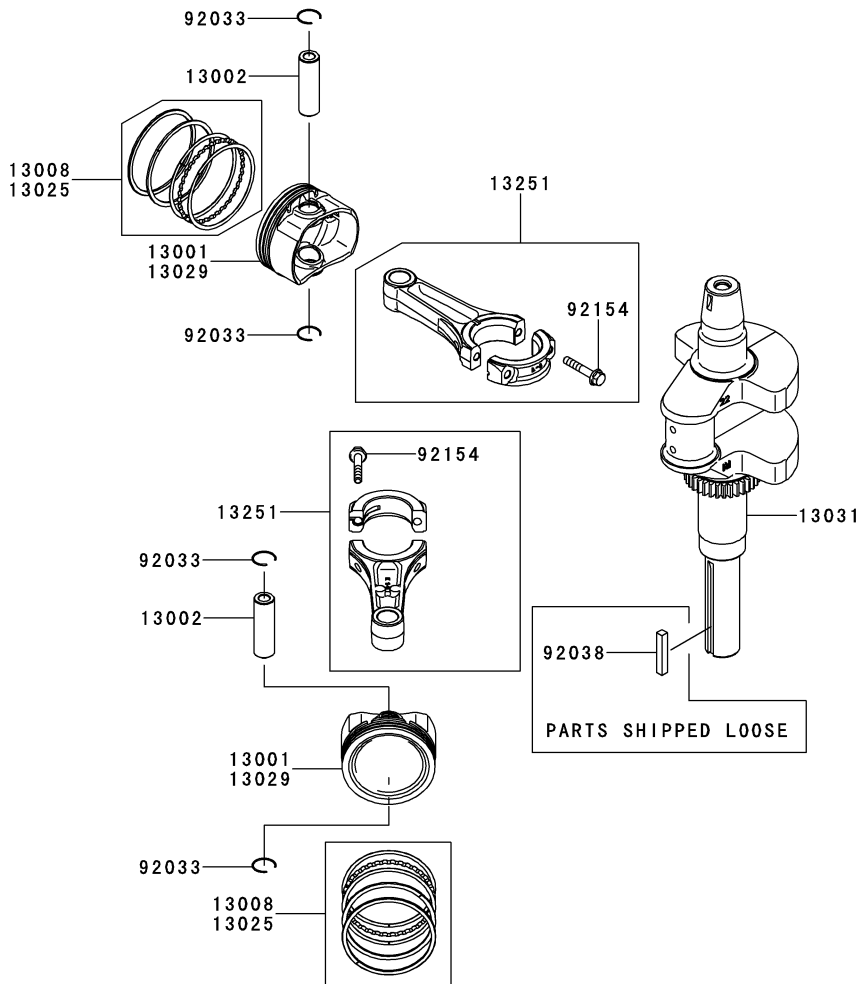
This catalog covers:

FS691V- □ G80

This fig. covers:

02 PISTON/CRANKSHAFT

E0120-A557B



Ref. No.	Part No.	Description	Quantity
13001	13001-7027	PISTON-ENGINE	2
13002	13002-0704	PIN-PISTON	2
13008	13008-7005	RING-SET-PISTON	2
13025	13025-7009	RING-SET-PISTON L,0.5	AR
13029	13029-7010	PISTON-ENGINE L,0.5	AR
13031	13031-0824	CRANKSHAFT-COMP	1
13251	13251-0719	ROD-ASSY-CONNECTING	2
92033	92033-0755	RING-SNAP	4
92038	92038-2101	KEY	1
92154	92154-2842	BOLT,6X35	4

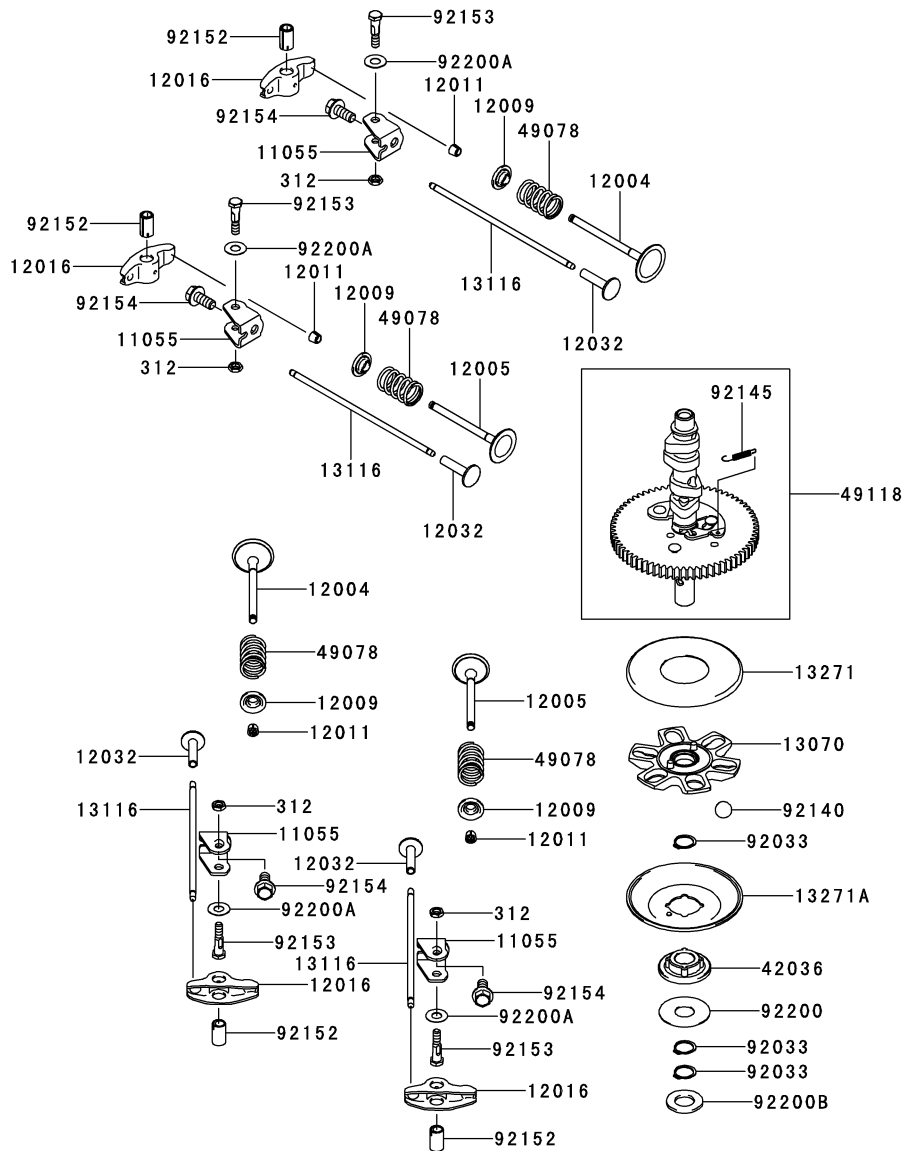
This catalog covers:

FS691V- □ G80

This fig. covers:

03 VALVE/CAMSHAFT

E0130-A248A



Ref. No.	Part No.	Description	Quantity
11055	11055-7009	BRACKET	4
12004	12004-0733	VALVE-INTAKE	2
12005	12005-0750	VALVE-EXHAUST	2
12009	12009-7001	RETAINER-VALVE SPRING	4
12011	12011-2056	COLLET	8
12016	12016-0040	ARM-ROCKER	4
12032	12032-7001	TAPPET	4
13070	13070-7017	GUIDE, GOVERNOR	1
13116	13116-0725	ROD-PUSH	4
13271	13271-7007	PLATE	1
13271A	13271-7021	PLATE, GOVERNOR	1
42036	42036-7021	SLEEVE	1
49078	49078-7002	SPRING-ENGINE VALVE, IN	4
49118	49118-7022	CAMSHAFT-COMP	1
92033	92033-0727	RING-SNAP	3
92140	92140-7005	BALL	6
92145	92145-1653	SPRING	1
92152	92152-1689	COLLAR	4
92153	92153-7100	BOLT, 6X29.5	4
92154	92154-1267	BOLT, 8X18.2	4
92200	92200-0945	WASHER, 16X42X0.91	1
92200A	92200-2151	WASHER, 8.1X18X0.5	4
92200B	92200-7048	WASHER, 16.3X30X2.28	1
312	312AA0600	NUT-HEX, 6MM	4

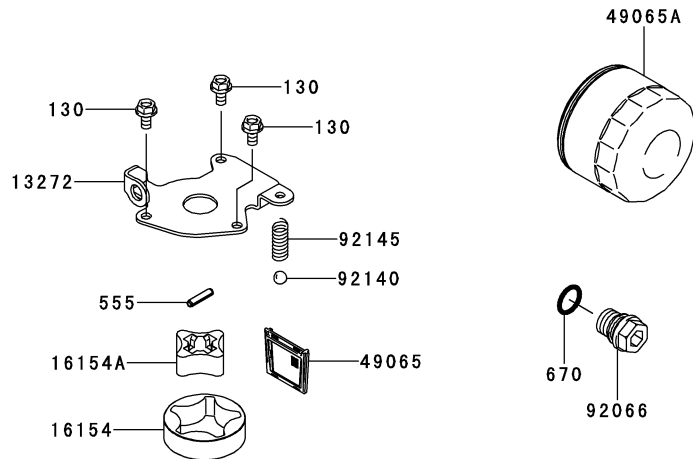
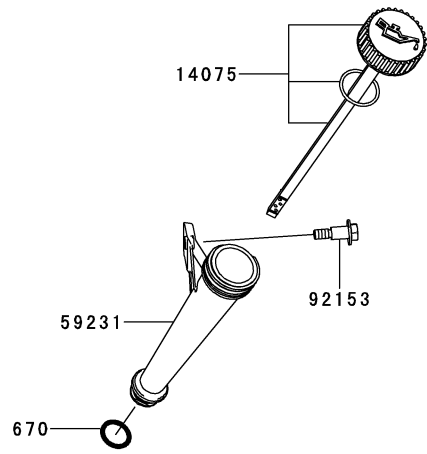
This catalog covers:

FS691V- □ G80

This fig. covers:

04 LUBRICATION-EQUIPMENT

E0140-A506P



Ref. No.	Part No.	Description	Quantity
13272	13272-7011	PLATE,ROTOR	1
14075	14075-0037	CAP-ASSY	1
16154	16154-7010	ROTOR-PUMP,OUTER	1
16154A	16154-7011	ROTOR-PUMP,INNER	1
49065	49065-7006	FILTER-OIL	1
49065A	49065-7007	FILTER-OIL	1
59231	59231-0712	FILLER	1
92066	92066-0774	PLUG	1
92140	92140-7003	BALL,STEEL,13/32	1
92145	92145-1658	SPRING	1
92153	92153-7008	BOLT	1
130	130BA0612	BOLT-FLANGED,6X12	3
555	555A0420	PIN-SPRING,4X20	1
670	670D2016	O RING,16MM	2

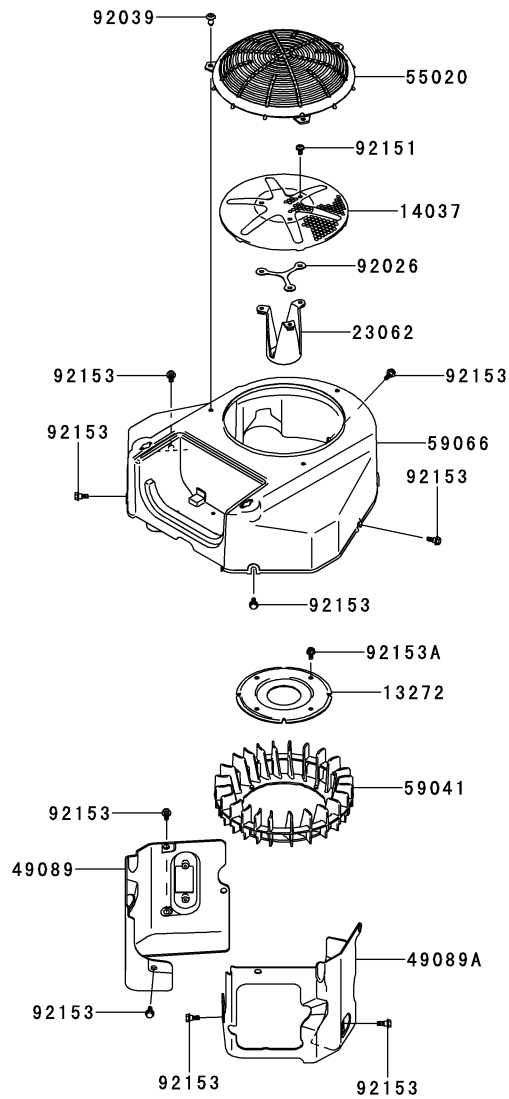
This catalog covers:

FS691V- □ G80

This fig. covers:

05 COOLING-EQUIPMENT

E0150-B347A



Ref. No.	Part No.	Description	Quantity
13272	13272-1487	PLATE,FAN	1
14037	14037-7008-9H	SCREEN	1
23062	23062-7024	BRACKET-COMP	1
49089	49089-7077	SHROUD-ENGINE	1
49089A	49089-7078	SHROUD-ENGINE	1
55020	55020-0900	GUARD	1
59041	59041-7014	FAN	1
59066	59066-0043	HOUSING-FAN	1
92026	92026-7007	SPACER	1
92039	92039-0751	RIVET,GUARD	3
92151	92151-7012	BOLT,6X12	3
92153	92153-7007	BOLT,FLANGED,6X16	9
92153A	92153-7043	BOLT,6X12	4

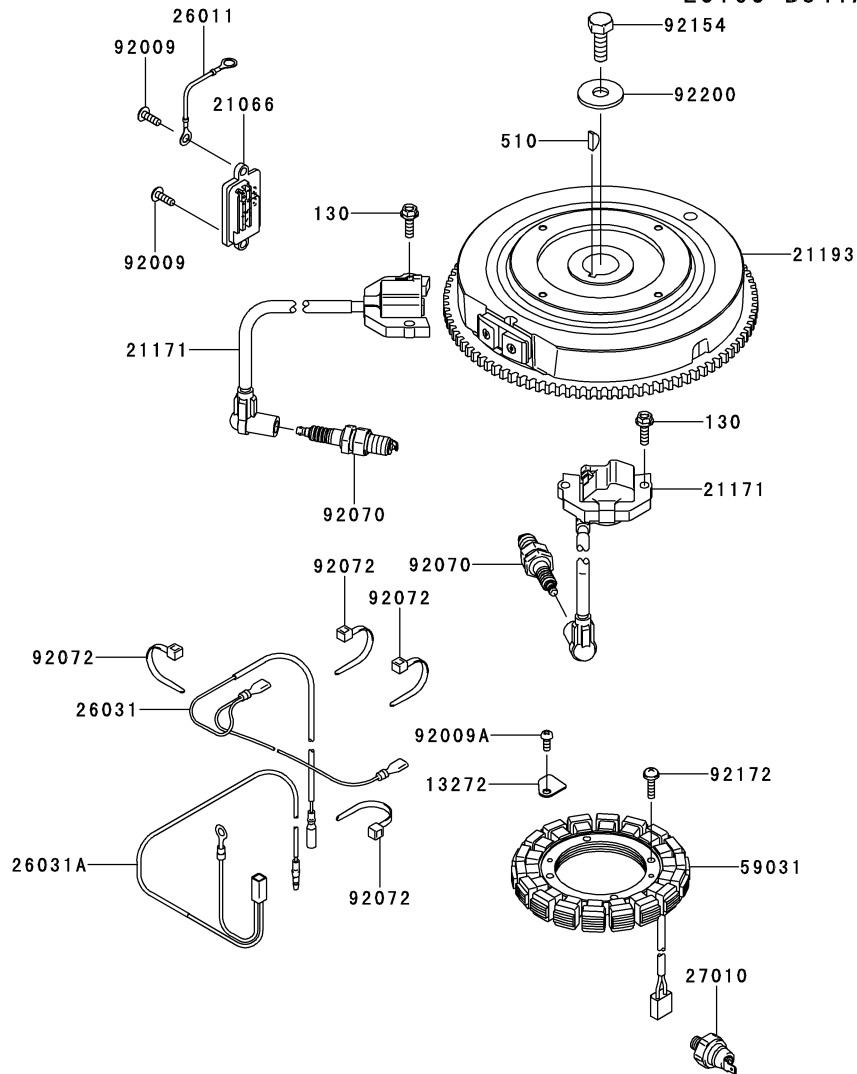
This catalog covers:

FS691V- □ G80

This fig. covers:

06 ELECTRIC-EQUIPMENT

E0160-B841A



Ref. No.	Part No.	Description	Quantity
13272	13272-7012	PLATE	1
21066	21066-7017	REGULATOR-VOLTAGE	1
21171	21171-0740	COIL-ASSY-IGNITION	2
21193	21193-0036	FLYWHEEL-ASSY	1
26011	26011-2234	WIRE-LEAD	1
26031	26031-7040	HARNESS	1
26031A	26031-7041	HARNESS	1
27010	27010-0818	SWITCH	1
59031	59031-7017	COIL-CHARGING	1
92009	92009-2303	SCREW	2
92009A	92009-2308	SCREW	1
92070	92070-7004	PLUG-SPARK,BPR4ES(NGK),SOLID	2
92072	92072-7003	BAND	4
92154	92154-7003	BOLT,12X30	1
92172	92172-7018	SCREW,5X20	4
92200	92200-7002	WASHER	1
130	130BA0620	BOLT-FLANGED,6X20	4
510	510A5100	KEY-WOODRUFF	1

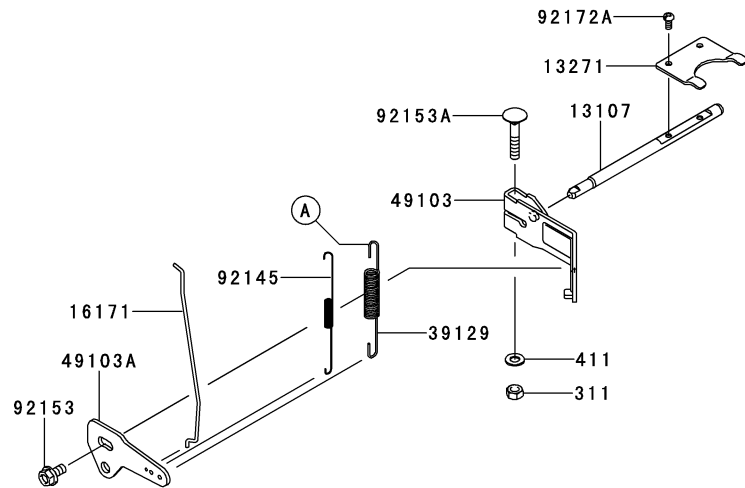
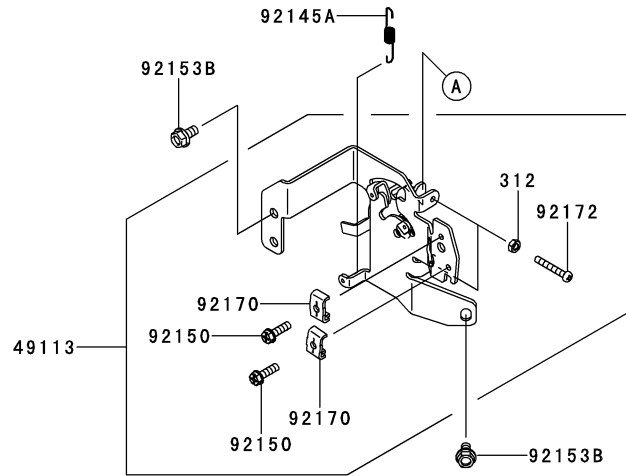
This catalog covers:

FS691V- □ G80

This fig. covers:

07 CONTROL-EQUIPMENT

E0170-A753B



Ref. No.	Part No.	Description	Quantity
13107	13107-7047	SHAFT,GOVERNOR	1
13271	13271-7038	PLATE	1
16171	16171-0033	LINK	1
39129	39129-7035	SPRING-GOVERNOR	1
49103	49103-7014	ARM-GOVERNOR	1
49103A	49103-7015	ARM-GOVERNOR	1
49113	49113-0727	PANEL-COMP-CONTROL	1
92145	92145-7057	SPRING	1
92145A	92145-7058	SPRING	1
92150	92150-2182	BOLT,5X18	2
92153	92153-0009	BOLT,6X12	1
92153A	92153-7033	BOLT,6X35	1
92153B	92153-7043	BOLT,6X12	2
92170	92170-7001	CLAMP	2
92172	92172-0792	SCREW,5X35	2
92172A	92172-0870	SCREW,4X8	2
311	311AA0600	NUT-HEX,6MM	1
312	312AA0500	NUT-HEX,5MM	2
411	411AA0600	WASHER-PLAIN,6MM	1

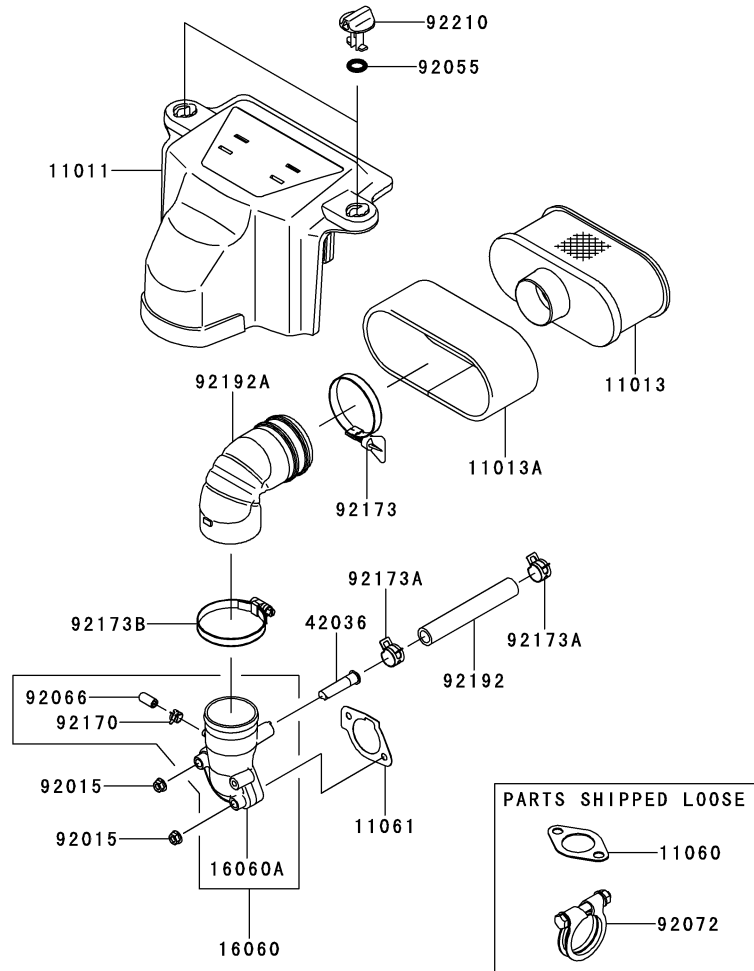
This catalog covers:

FS691V- □ G80

This fig. covers:

09 AIR-FILTER/MUFFLER

E0190-B688A



Ref. No.	Part No.	Description	Quantity
11011	11011-0786	CASE-AIR FILTER	1
11013	11013-0752	ELEMENT-AIR FILTER	1
11013A	11013-7046	ELEMENT-AIR FILTER	1
11060	11060-7016	GASKET,MUFFLER	2
11061	11061-7086	GASKET,CARBURETOR/PIPE-INTAKE	1
16060	16060-0048	PIPE-INTAKE	1
16060A	16060-7038	PIPE-INTAKE	1
42036	42036-7022	SLEEVE,BREATHER	1
92015	92015-1367	NUT,FLANGED,6MM	2
92055	92055-7025	RING-O	2
92066	92066-0095	PLUG	1
92072	92072-7013	BAND	1
92170	92170-2042	CLAMP	1
92173	92173-1001	CLAMP	1
92173A	92173-7003	CLAMP	2
92173B	92173-7010	CLAMP	1
92192	92192-7146	TUBE,12.6X18.6X118	1
92192A	92192-7165	TUBE	1
92210	92210-7038	NUT	2

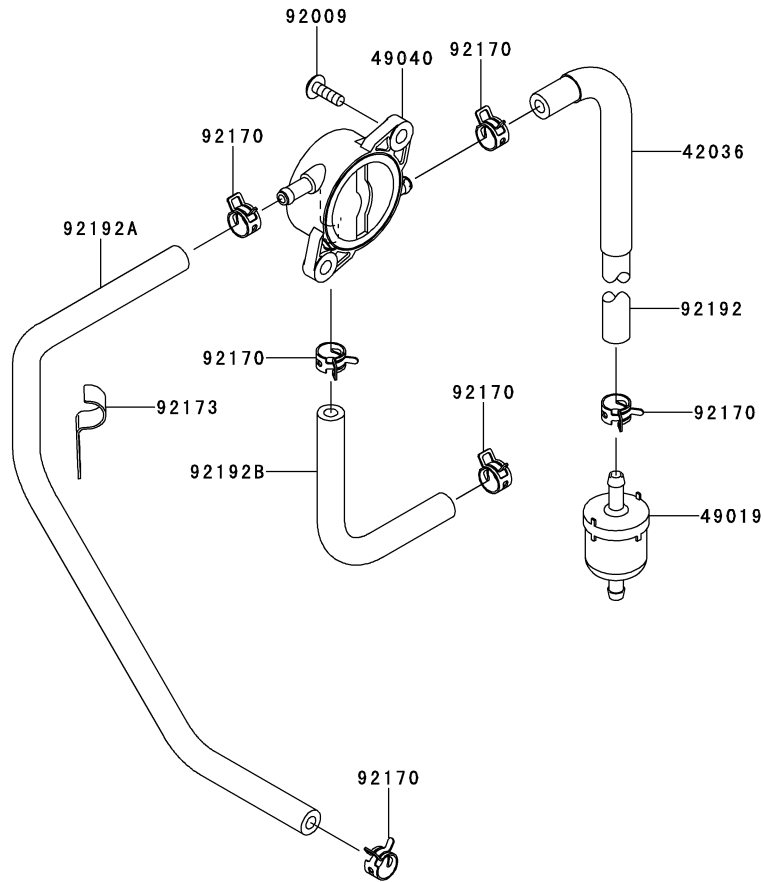
This catalog covers:

FS691V- □ G80

This fig. covers:

10 FUEL-TANK/FUEL-VALVE

E0200-A880D



Ref. No.	Part No.	Description	Quantity
42036	42036-7015	SLEEVE	1
49019	49019-0027	FILTER-FUEL	1
49040	49040-7008	PUMP-FUEL	1
92009	92009-2303	SCREW	2
92170	92170-2009	CLAMP	6
92173	92173-1000	CLAMP	1
92192	92192-1551	TUBE,6.35X12.7X185	1
92192A	92192-1555	TUBE,6.35X12.7X390	1
92192B	92192-7148	TUBE,6.4X12.7X150	1

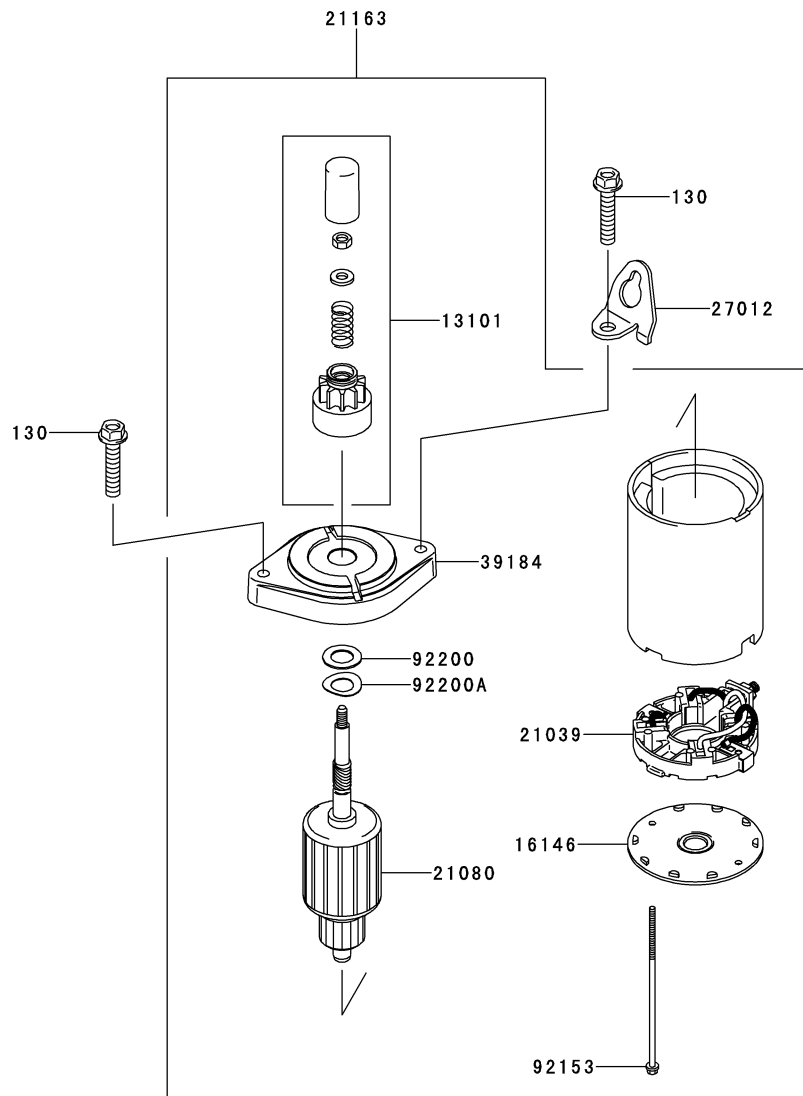
This catalog covers:

FS691V- □ G80

This fig. covers:

11 STARTER

E0210-A726A



Ref. No.	Part No.	Description	Quantity
13101	13101-0650	GEAR-ASSY	1
16146	16146-7013	COVER-ASSY	1
21039	21039-7002	BRUSH	1
21080	21080-0009	ARMATURE	1
21163	21163-0749	STARTER-ELECTRIC	1
27012	27012-7008	HOOK	1
39184	39184-0019	BRACKET-ASSY	1
92153	92153-7034	BOLT	2
92200	92200-7023	WASHER	1
92200A	92200-7024	WASHER	1
130	130BA0840	BOLT-FLANGED,8X40	2

This catalog covers:

FS691V- □ G80

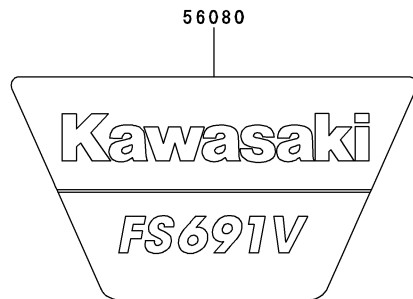
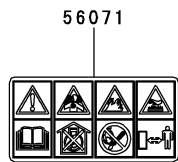
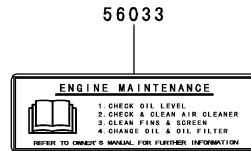
12

This fig. covers:

LABEL

F0290-B859A

Ref. No.	Part No.	Description	Quantity
56033	56033-7001	LABEL-MANUAL	1
56071	56071-0366	LABEL-WARNING	1
56080	56080-0746	LABEL-BRAND	1



This catalog covers:

FS691V- □ G80

This fig. covers:

PART NAME INDEX

AIR-FILTER/MUFFLER	09
CARBURETOR	08
CONTROL-EQUIPMENT	07
COOLING-EQUIPMENT	05
CYLINDER/CRANKCASE	01
ELECTRIC-EQUIPMENT	06
FUEL-TANK/FUEL-VALVE	10
LABEL	12
LUBRICATION-EQUIPMENT	04
PISTON/CRANKSHAFT	02
STARTER	11
VALVE/CAMSHAFT	03

This catalog covers:

FS691V- □ G80

This fig. covers:

NUMERICAL PARTS INDEX

Part No.	Fig No.	Part No.	Fig No.	Part No.	Fig No.	Part No.	Fig No.	Part No.	Fig No.
11004-7026	01	16060-0048	09	670B2011	01	92170-2009	10		
11008-0845	01	16060-7038	09	670D2016	04	92170-2042	09		
11008-0861	01	16073-7013	08	92004-0723	08	92170-7001	07		
11011-0786	09	16126-7020	01	92009-2083	08	92172-0792	07		
11013-0752	09	16146-7013	11	92009-2303	06	92172-0870	01		
11013-7046	09	16154-7010	04	92009-2303	10	92172-0870	07		
11022-0038	01	16154-7011	04	92009-2308	06	92172-7018	06		
11022-0710	01	16171-0033	07	92009-2349	08	92173-1000	10		
11055-7009	03	16186-7006	08	92009-2402	08	92173-1001	09		
11060-7016	09	172BA0822	01	92015-1367	09	92173-7003	09		
11061-7009	08	21039-7002	11	92026-7007	05	92173-7010	09		
11061-7010	08	21066-7017	06	92033-0727	03	92192-1551	10		
11061-7083	01	21080-0009	11	92033-0755	02	92192-1555	10		
11061-7086	09	21163-0749	11	92038-2101	02	92192-7146	09		
11061-7087	08	21171-0740	06	92039-0751	05	92192-7148	10		
11061-7088	08	21188-7002	08	92043-0858	01	92192-7165	09		
11061-7093	08	21193-0036	06	92043-1263	01	92200-0848	08		
11061-7094	01	23062-7024	05	92049-7001	01	92200-0945	03		
12004-0733	03	26011-2234	06	92049-7010	01	92200-2151	03		
12005-0750	03	26031-7040	06	92049-7019	01	92200-7002	06		
12009-7001	03	26031-7041	06	92049-7028	01	92200-7023	11		
12011-2056	03	27010-0818	06	92055-7025	09	92200-7024	11		
12016-0040	03	27012-7008	11	92063-7141	08	92200-7048	03		
12032-7001	03	311AA0600	07	92063-7142	08	92210-7038	09		
13001-7027	02	312AA0500	07	92063-7149	08				
13002-0704	02	312AA0600	03	92066-0095	09				
13008-7005	02	32155-7003	01	92066-0761	01				
13025-7009	02	39074-7001	08	92066-0762	01				
13029-7010	02	39129-7035	07	92066-0774	04				
13031-0824	02	39184-0019	11	92066-2204	08				
13070-7017	03	411AA0600	07	92066-2223	01				
130AA0630	08	42036-7015	10	92066-2244	08				
130BA0612	04	42036-7021	03	92070-7004	06				
130BA0620	06	42036-7022	09	92072-7003	06				
130BA0625	01	49015-0023	01	92072-7013	09				
130BA0840	11	49019-0027	10	92093-0593	08				
130CA1050	01	49040-7008	10	92104-0007	01				
130CA1065	01	49065-7006	04	92140-7003	04				
13101-0650	11	49065-7007	04	92140-7005	03				
13107-7018	08	49078-7002	03	92145-1579	08				
13107-7047	07	49089-7077	05	92145-1653	03				
13116-0725	03	49089-7078	05	92145-1658	04				
13251-0719	02	49103-7014	07	92145-7057	07				
13271-7007	03	49103-7015	07	92145-7058	07				
13271-7021	03	49113-0727	07	92150-2182	07				
13271-7038	07	49118-7022	03	92151-7012	05				
13272-1374	01	49120-0858	01	92152-1689	03				
13272-1487	05	49121-7018	08	92153-0009	07				
13272-7011	04	510A5100	06	92153-7007	05				
13272-7012	06	55020-0900	05	92153-7008	04				
14037-7008-9H	05	555A0420	04	92153-7033	07				
14075-0037	04	56033-7001	12	92153-7034	11				
14093-0455	01	56071-0366	12	92153-7043	01				
15004-0985	08	56080-0746	12	92153-7043	05				
16020-7003	08	59031-7017	06	92153-7043	07				
16025-7017	08	59041-7014	05	92153-7054	01				
16030-7003	08	59066-0043	05	92153-7100	03				
16031-7002	08	59071-0733	01	92154-1267	03				
16041-0007	08	59076-0009	08	92154-2842	02				
16041-7051	08	59231-0712	04	92154-7003	06				